

# Task Force on University of Wyoming Housing

November 22, 2019



UNIVERSITY OF WYOMING

## Task Force

### Recommendations to the Board of Trustees

- Recommend demolition of Wyoming Hall
- Recommend begin construction of an appropriate number of buildings in the northeast corner of campus (includes Wyoming Hall and the parking lot immediately south, but is not limited to this area)
- Recommend construction of a parking garage on the Ivinson lot (multi-story) and other swing space parking
- Evaluate former dorm buildings for renovation, structural elements and what the pros and cons are, especially a cost analysis of the renovation
- Recommend to trustees that they incorporate food service planning and design in the northeast corner of campus



UNIVERSITY OF WYOMING

## UW Board of Trustees

### July, 2019

- Board approves design consultant for the Student Housing project

### September, 2019

- Board authorizes the demolition of Wyoming Hall
- Board authorizes the construction of an appropriate number of buildings in the NE corner of campus to accommodate Phase 1 housing and dining facilities
- Board authorizes the construction of a multi-story parking garage on the Iverson parking lot site
- Board directs Administration to evaluate former dorm buildings for potential use as student housing
- Board directs Administration to proceed with evaluation of bond financing
- Board authorizes the renovation of Hill Hall for office swing space to accommodate the residents of Wyoming Hall
- Board directs Administration to prepare a 5-year timeline for housing-related projects



UNIVERSITY OF WYOMING

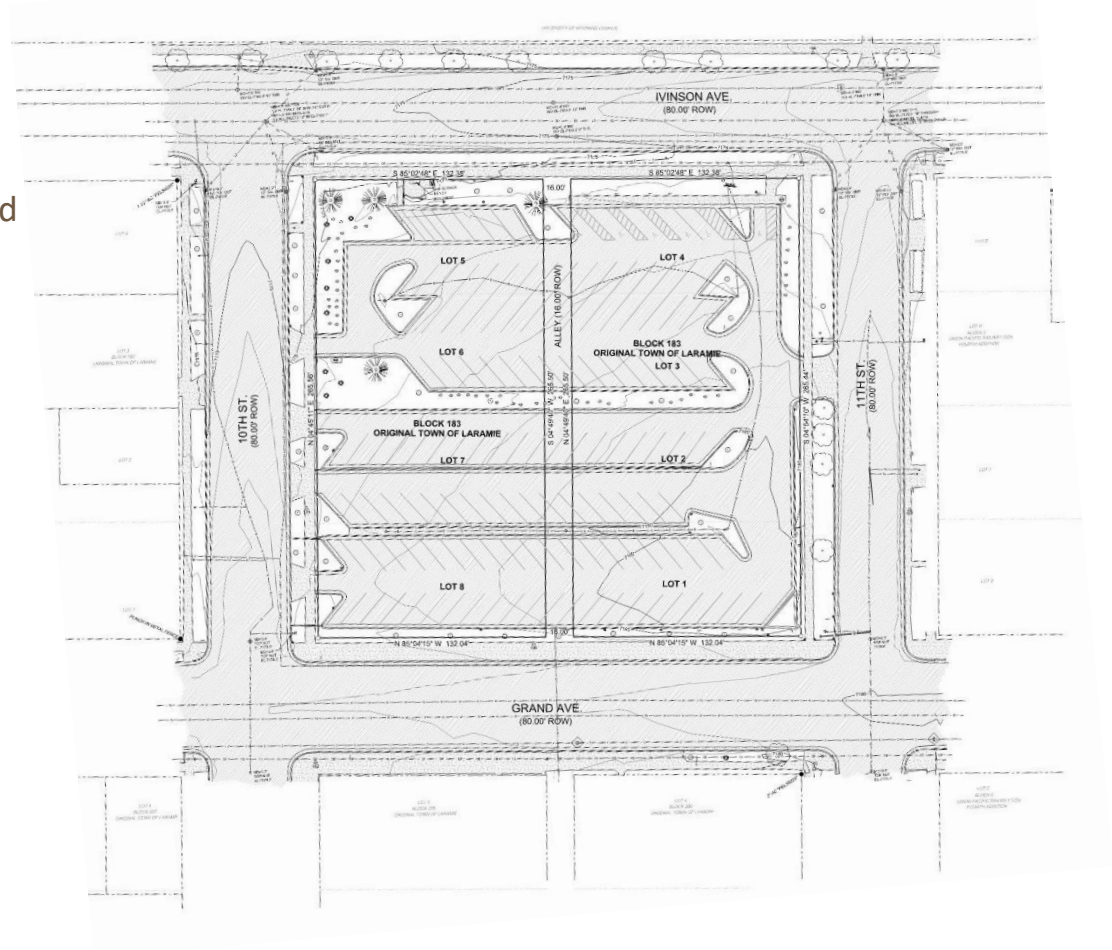
## Current Housing-Related Projects

- Ivinson Parking Garage
- Wyoming Hall
- Parking
- West Campus Satellite Energy Plant
- Fleet and Transit
- Student Housing and Dining Facilities



# Ivinson Parking Garage

- Survey complete
- Geotechnical report in progress
- Vacation of alley easement submitted
- Design team selection



UNIVERSITY OF WYOMING



## Wyoming Hall

- Industrial hygienist survey in progress
- Hill Hall renovation/ move
- Utility infrastructure relocation
- Deconstruction documents



UNIVERSITY OF WYOMING





## West Campus Satellite Energy Plant

- Construction activities underway
- Built-in capacity for housing and dining
- Utility infrastructure relocation coordination



UNIVERSITY OF WYOMING



## Fleet and Transit

- Currently operating out of the Service Building and Wyoming Hall
- Relocation to S. 15<sup>th</sup> St.
- Bus and fleet storage currently located on campus
- Maintenance facility relocation
- Provides additional ½ block parking lot on Bradley



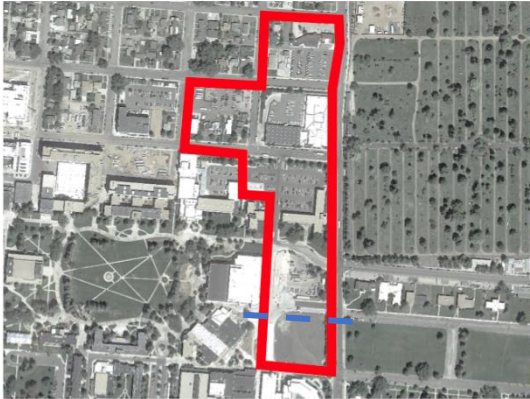
UNIVERSITY OF WYOMING

## Student Housing

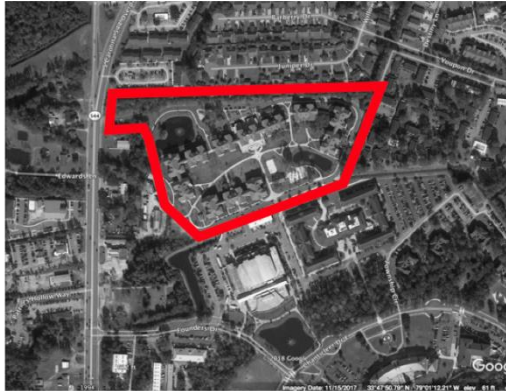
- Programming and conceptual design for Phase 1 underway
- Site survey in progress
- Utility routing being coordinated with the infrastructure relocation project
- Access
  - Service
  - Emergency vehicles
  - Food service access
  - Mail delivery
  - Lab School
  - Union
  - Half Acre







University of Wyoming  
2000 Students 14.5 acres – **138 beds/acre**



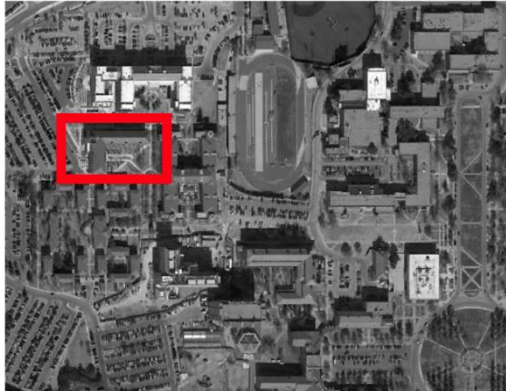
Coastal Carolina University  
1270 Students 19 acres – **66 beds/acre**



South 40 – Washington University in St. Louis  
3300 Students 28 acres – **117 beds/acre**



West Campus Village – Miami University  
720 Students 8 acres – **90 beds/acre**



Honors Hall – Texas Tech University  
313 Students 3 acres – **156 beds/acre**



East Halls – Penn State University  
4589 Students 24 acres – **188 beds/acre**



UNIVERSITY OF WYOMING





South 40 – Washington University in St. Louis  
3300 Students 28 acres - **117 beds/acre**

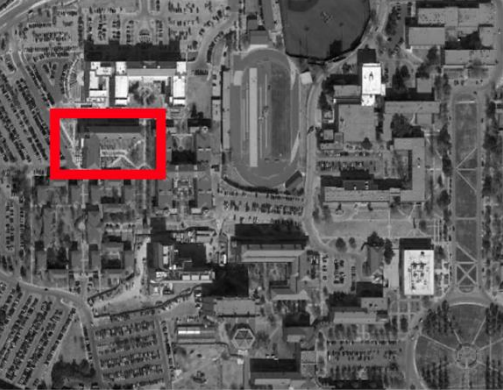


South 40 – Washington University  
3,300 Students - **117 beds/acre**



UNIVERSITY OF WYOMING





Honors Hall – Texas Tech University  
313 Students 3 acres – **156 beds/acre**



Honors Hall – Texas Tech  
313 Students - **156 beds/acre**



UNIVERSITY OF WYOMING





East Halls – Penn State University  
4589 Students 24 acres – **188 beds/acre**



East Halls – Penn State  
4,589 Students - **188 beds/acre**



UNIVERSITY OF WYOMING

## Site Plan Explorations – Scheme ‘1’



- 4 Stories
- 950 beds
- 837 seat dining facility



UNIVERSITY OF WYOMING



## Site Plan Explorations – Scheme '2'



- 4 and 5 stories
- 950 beds
- 837 seat dining facility



UNIVERSITY OF WYOMING



## Site Plan Explorations – Scheme '3'



- 5 stories
- 950 beds
- 837 seat dining facility



UNIVERSITY OF WYOMING



Scheme '1' - 4 Stories  
Residential: 3 Halls, 950 Beds Total  
Dining: 837 Seats



Scheme '2' - 4 and 5 Stories  
Residential: 2 Halls, 950 Beds Total  
Dining: 837 Seats



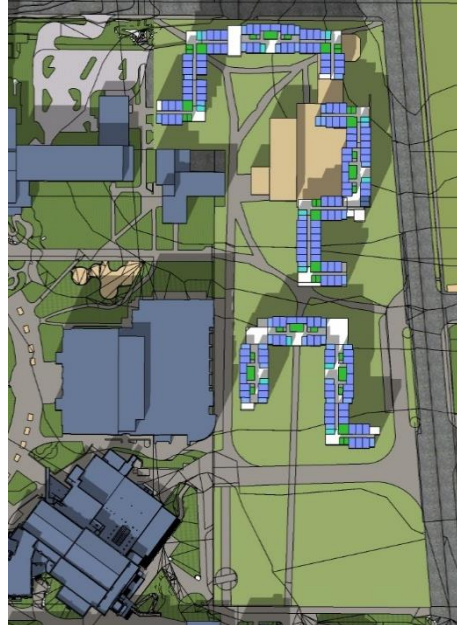
Scheme '3' - 5 Stories  
Residential: 2 Halls, 950 Beds Total  
Dining: 837 Seats



UNIVERSITY OF WYOMING

## Dining Facility

- 837 seat dining facility
- Stand-alone vs. integrated facility
- Loading and service connectivity
- Student vs. campus service



UNIVERSITY OF WYOMING

## Phase 2 Considerations

- Site(s)
- Proximity to dining facility
- Number of beds
- Proximity to Phase 1 housing
- West Campus Satellite Energy Plant



UNIVERSITY OF WYOMING