

STUDENT HOUSING

INTERIOR DESIGN PRESENTATION

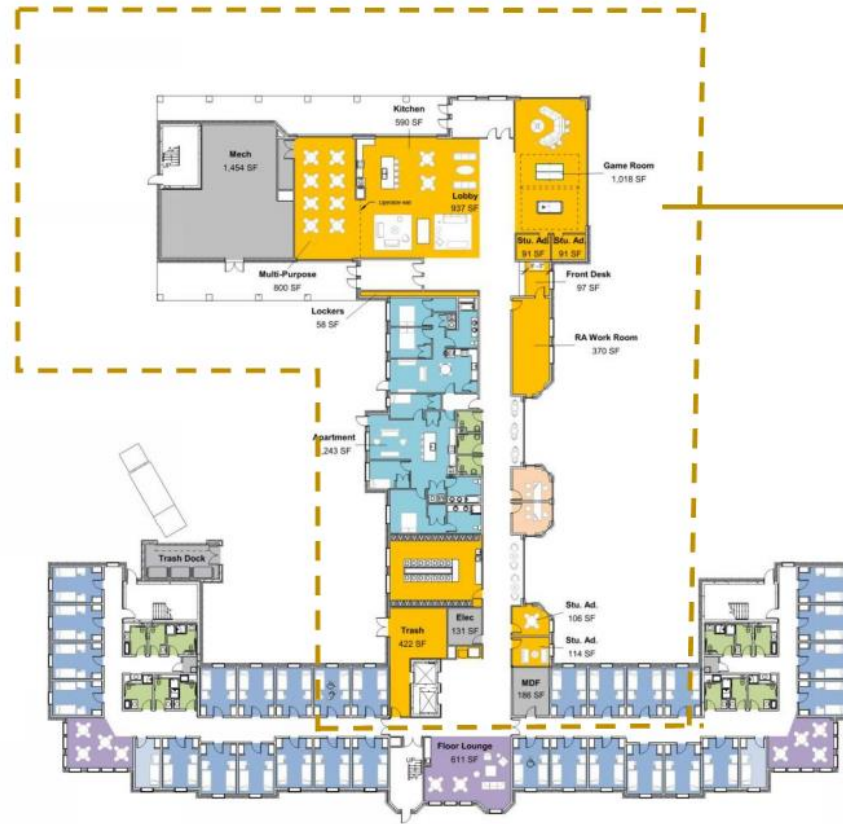
MARCH 9, 2021



Site Plan



South Hall - First Floor Plan



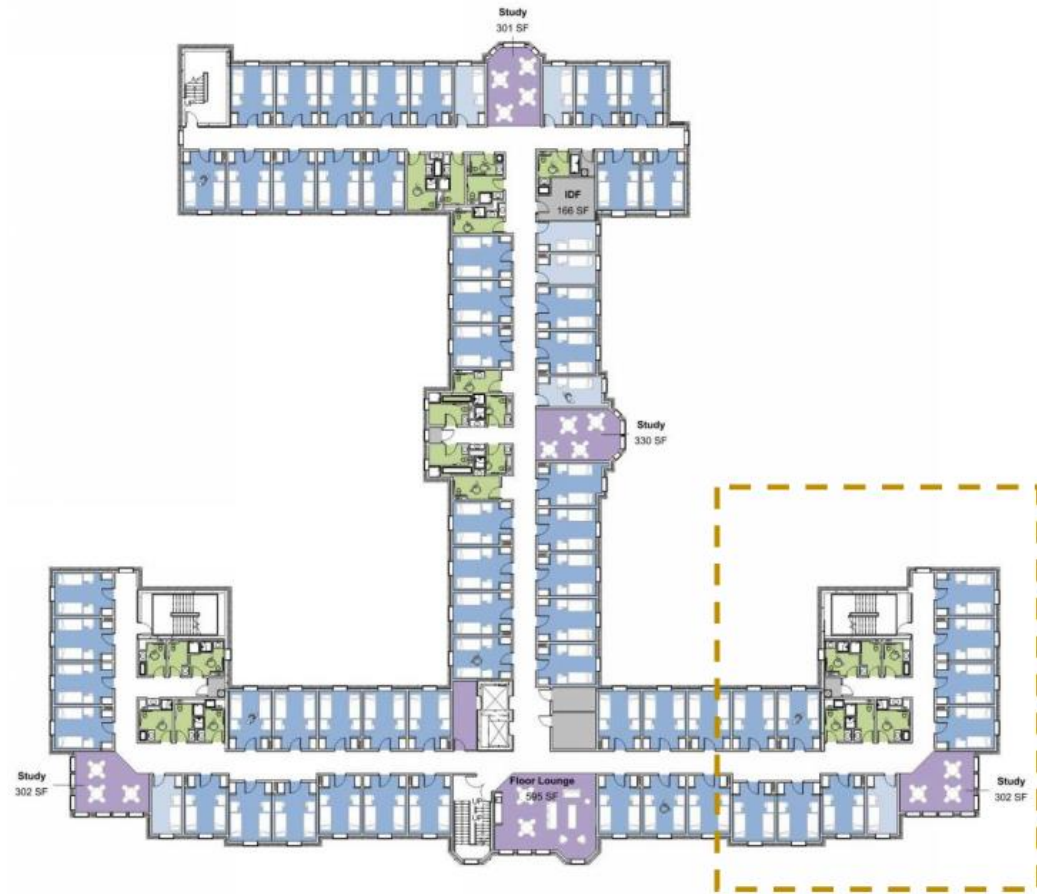
First Floor Plan



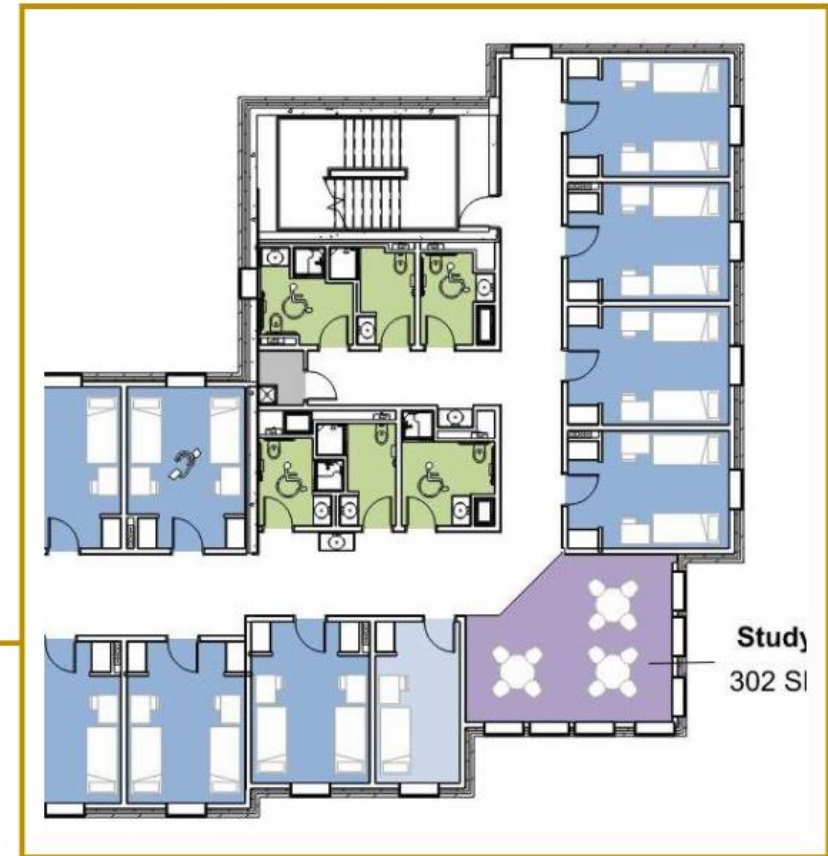
First Floor Plan
Enlarged Residential Amenities



South Hall - Upper Floor Plans



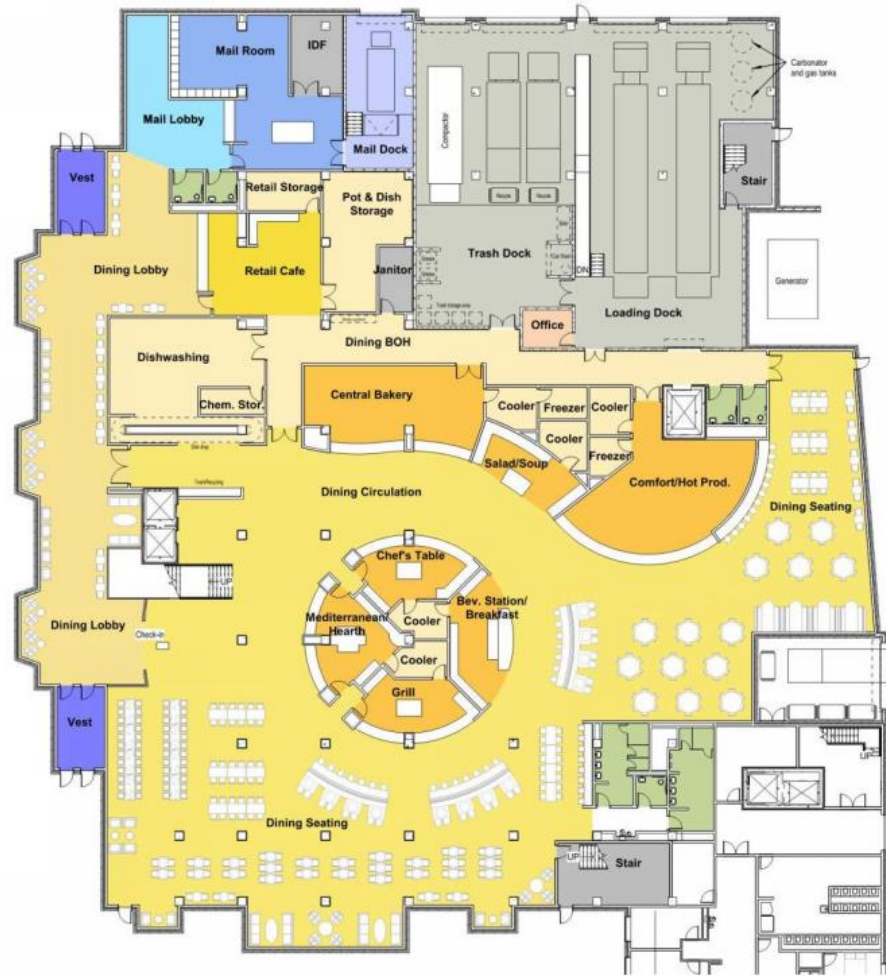
Second - Fifth Floor Plan



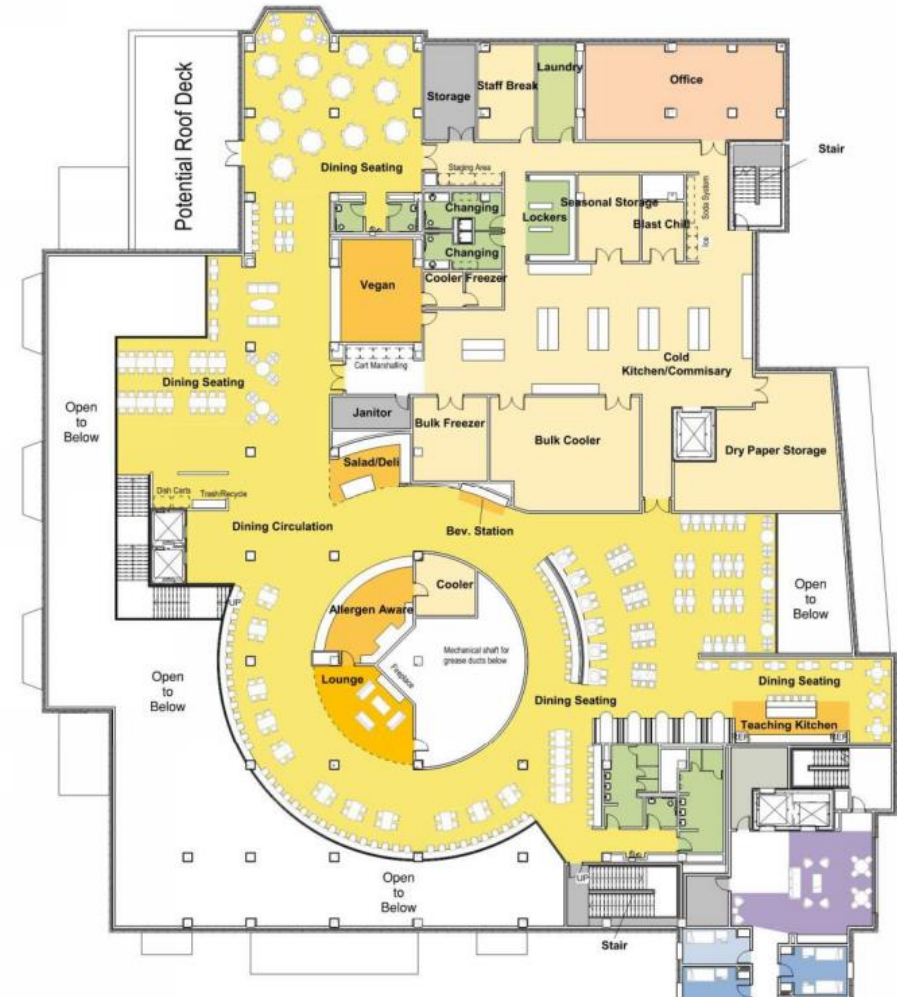
Second - Fifth Floor Plan
Enlarged Residential



North Hall – Dining Plans



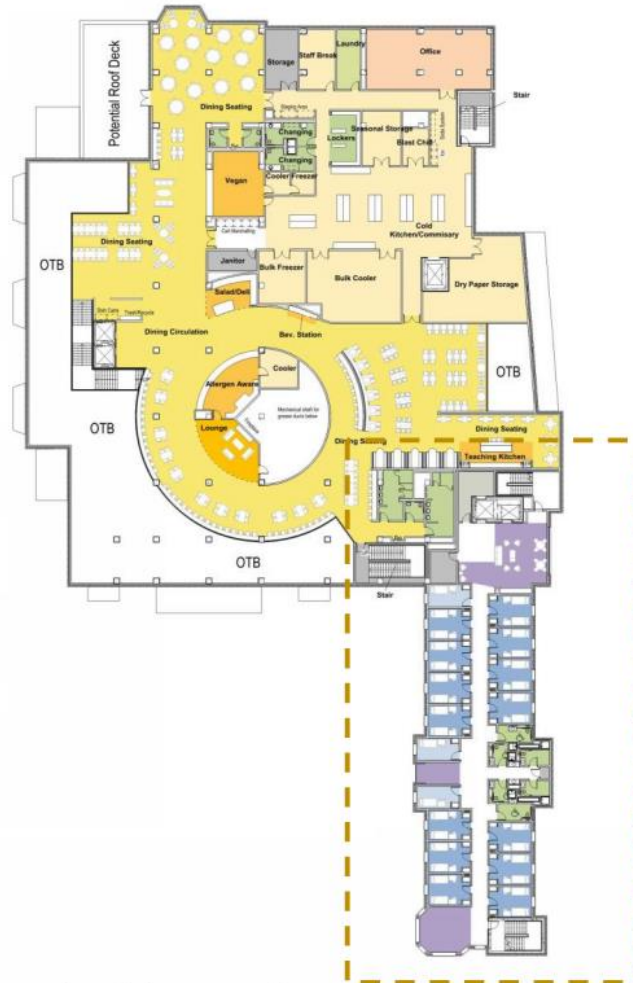
Enlarged First Floor of Dining



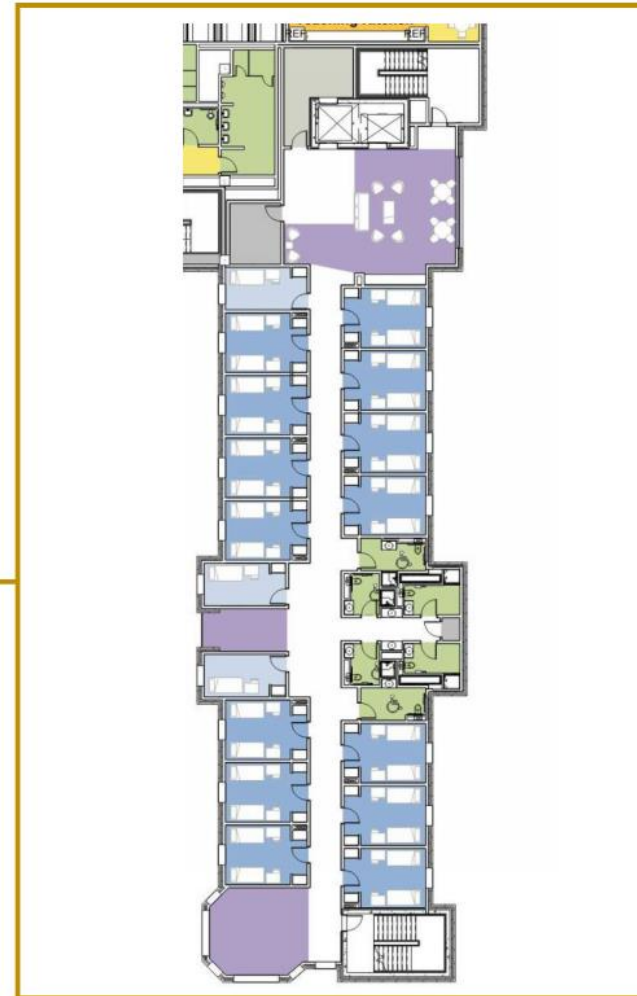
Enlarged Second Floor of Dining



North Hall - Second Floor Plan



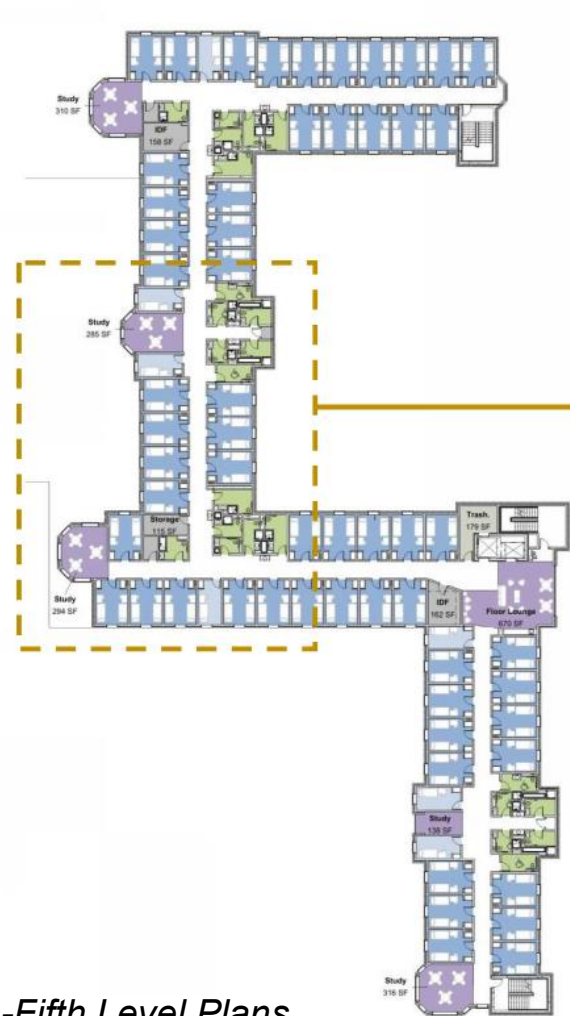
Second Building Level



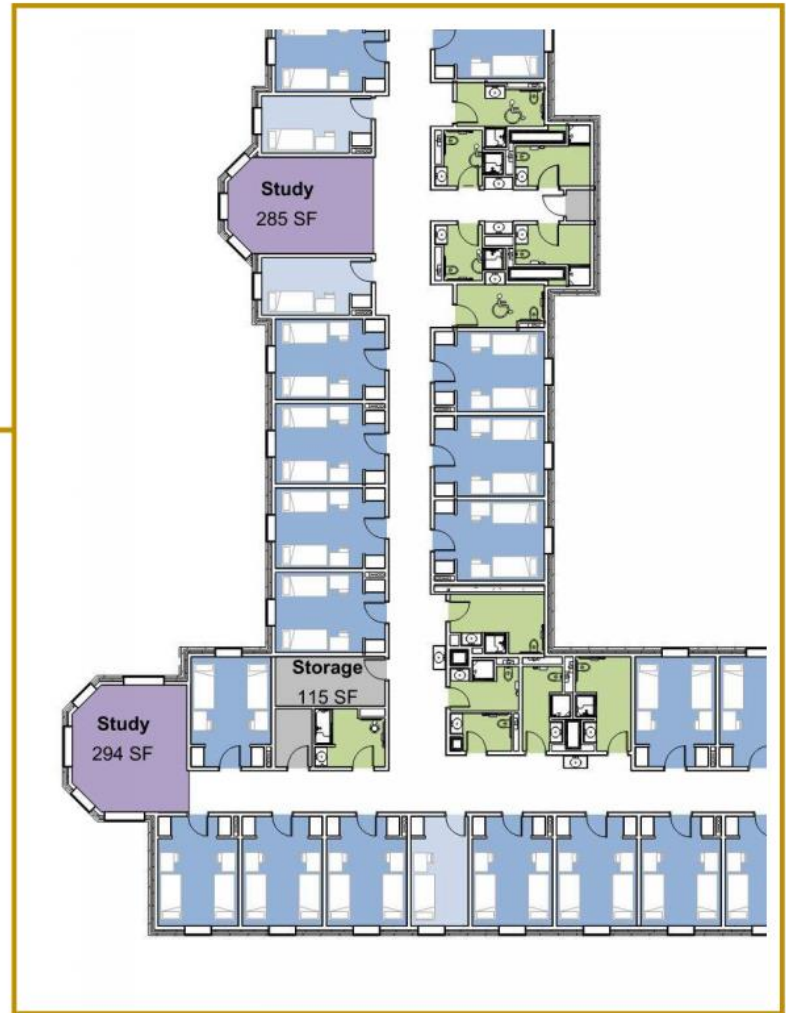
*Second Level Plan
Enlarged Residential*



North Hall – Upper Floor Plans



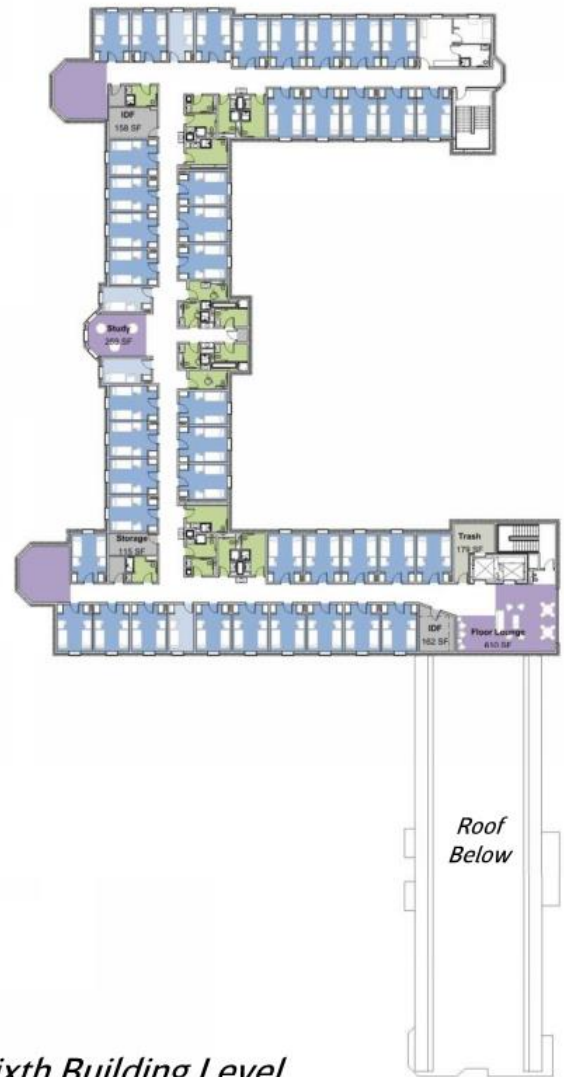
Fourth-Fifth Level Plans



Fourth-Fifth Level Plan
Enlarged Residential



North Hall – Sixth Floor Plan



Sixth Building Level



ALTERNATE ROOM TYPES



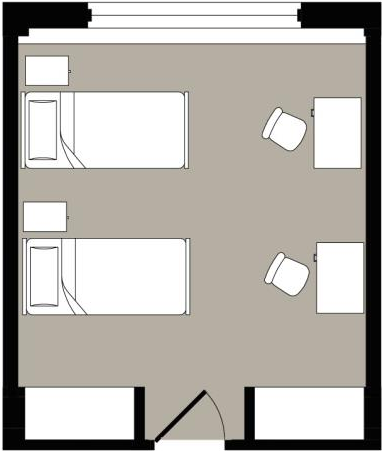
Current Room Configuration

Traditional single and double-occupancy rooms

Pods of 31 (30 students, 1 RA)

Shared, single-occupancy restrooms (6/pod)

Total Cost/ Bed: \$136,591



Traditional Double



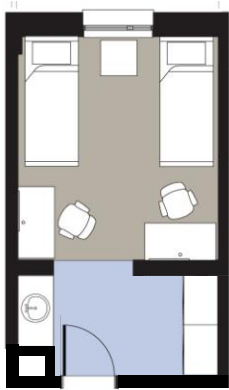
Single-Occupancy Restrooms

Room Types w/ Plumbing

Double with Sink

\$138,091/Bed

1.1% Higher than base unit



Single bedroom with single sink

4-Bed Semi-Suite

\$154,951/Bed

13.4% Higher than base unit



Double bedrooms with shared single bathroom

2-Bed Semi-Suite

\$160,891/Bed

17.8% Higher than base unit

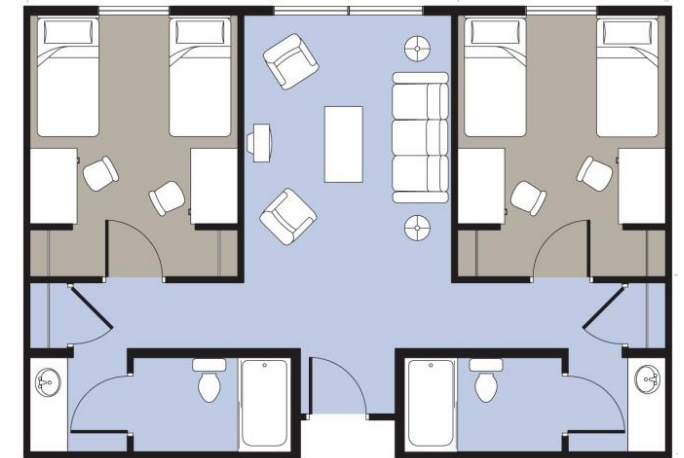


Single bedroom with shared single bathroom

Super-Suite

\$185,551/Bed

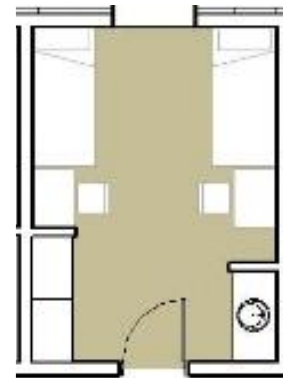
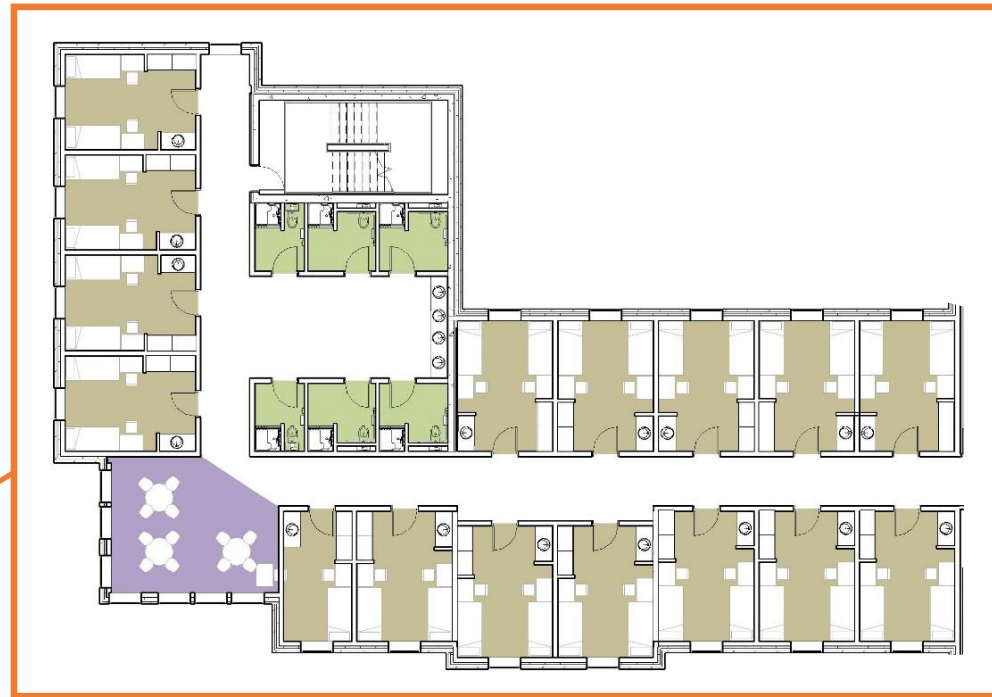
35.84% Higher than base unit



Single or double bedrooms with shared bathrooms and kitchenette and/or living room



Integrate Sinks in Room



Double with Sink

Scheme Mix

3% Singles w/ Sink

97% Doubles w/ Sink

Add Sink to Double Cost/Bed

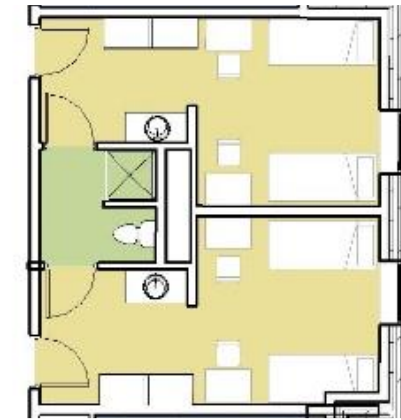
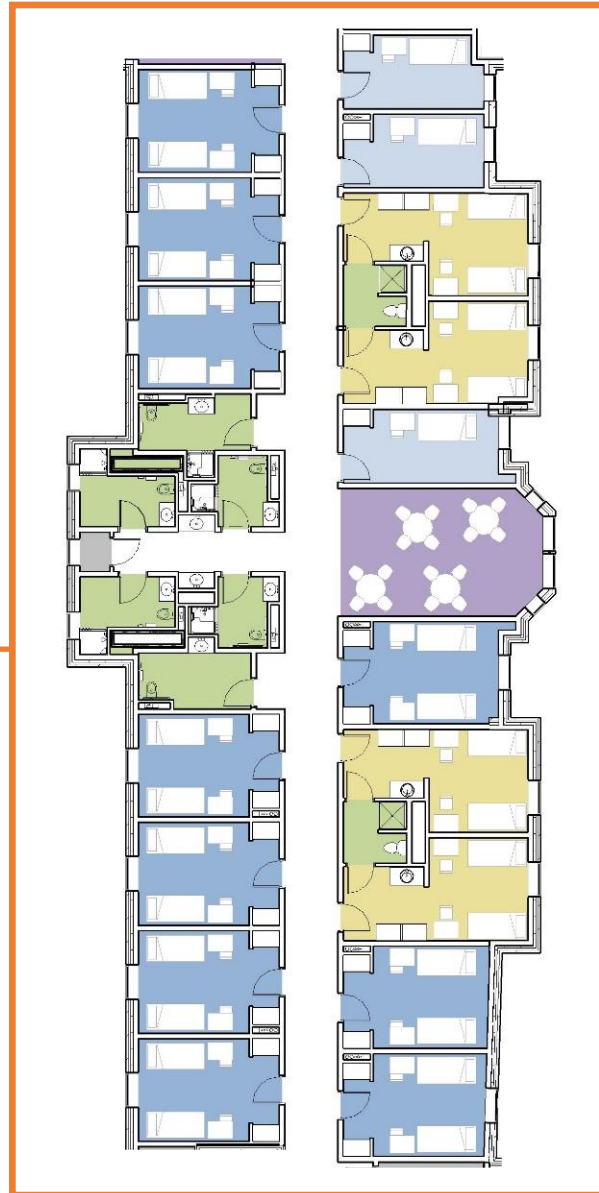
\$138,091/Bed

1.1% Higher than base unit

STUDENT HOUSING



Integrate 4-Bed Semi-Suite



4-Bed Semi-Suite

Scheme Mix

10% Singles

65% Doubles

25% 4-Bed Semi-Suite

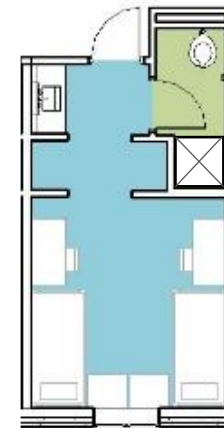
4-Bed Semi-Suite Cost/Bed

\$154,951/Bed

13.4% Higher than base unit type



Integrate 2-Bed Semi-Suite



2-Bed Semi-Suite

Scheme Mix

- 3% 1-Bed Semi-Suite
- 97% 2-Bed Semi-Suite

2-Bed Semi-Suite Cost/Bed

\$160,891/Bed

17.8% Higher than base unit type



Integrate 4-Bed Super Suite



4-Bed Super Suite



Scheme Mix

3% Singles

83% Doubles

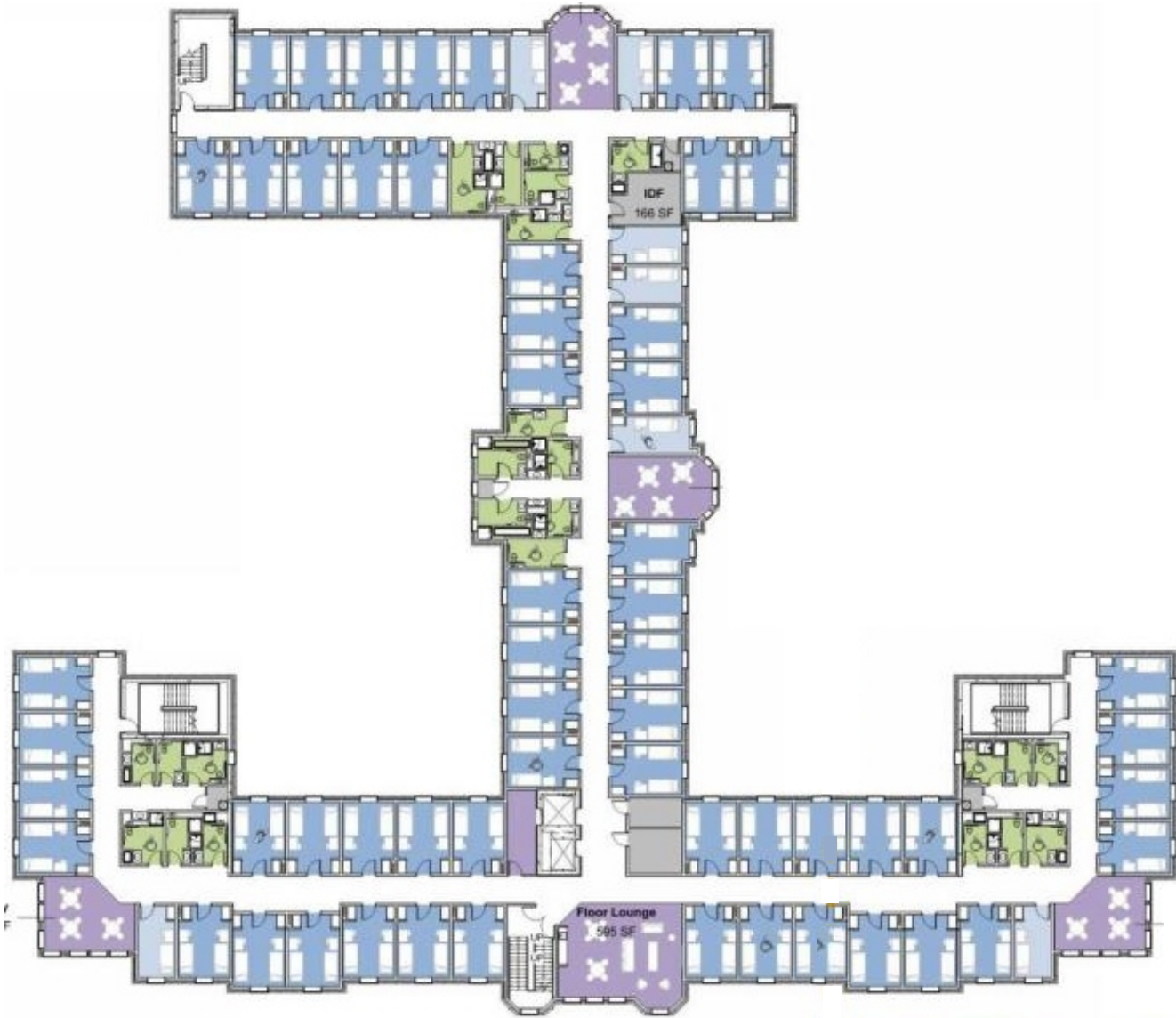
14% 4-Bed Semi-Suite

4-Bed Super Suite Cost/Bed

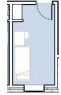
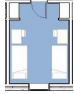




\$185,551

35.84% Higher than base unit



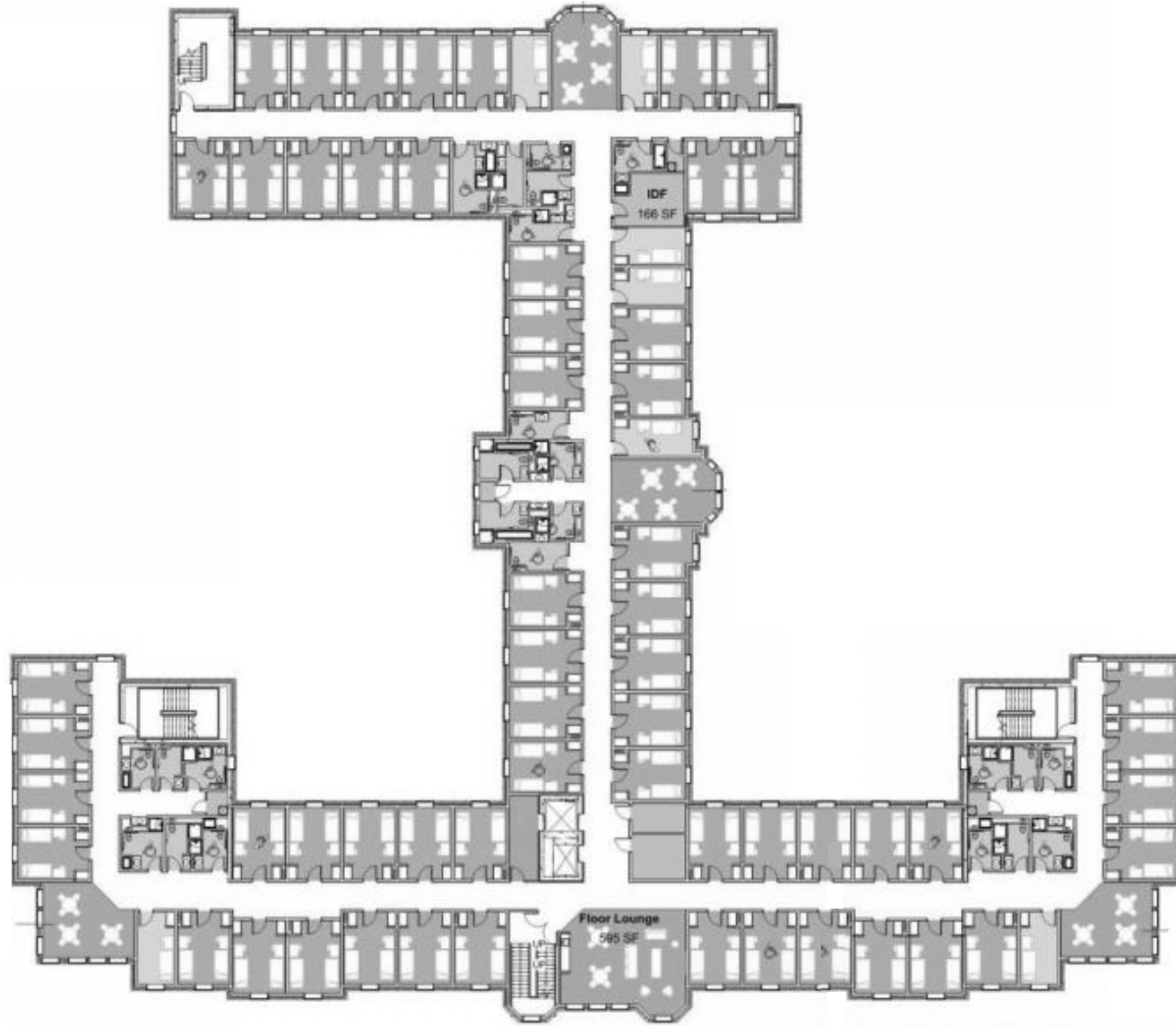


ROOM TYPE CONCEPT WORKSHEET

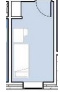
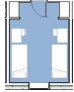




-  Traditional Single
-  Traditional Double
-  Double w/ Sink
-  2-Bed Semi-Suite
-  4-Bed Semi-Suite
-  4-Bed Super Suite

STUDENT HOUSING





ROOM TYPE CONCEPT WORKSHEET

-  Traditional Single
-  Traditional Double
-  Double w/ Sink
-  2-Bed Semi-Suite
-  4-Bed Semi-Suite
-  4-Bed Super Suite

STUDENT HOUSING

