

**GEORGE C. FRISON INSTITUTE  
OF ARCHAEOLOGY AND ANTHROPOLOGY – GFI  
UNIVERSITY OF WYOMING**



**MAY 2006**

**BULLETIN No. 15a**

Director: Marcel Kornfeld  
Associate Director and Editor: Mary Lou Larson  
Dept. 3431  
1000 East University  
Laramie, WY 82071

GFIF BOARD  
President – Susan Bupp  
Promotion Chair – P. Jaye Ripley  
Fundraising Chair – Terry Wilson  
Membership Chair – Rhoda Lewis  
Horary Chair- George C. Frison

Web: <http://uwacadweb.uwyo.edu/FRISONINSTITUTE/>

Dear Volunteer/Visitor,

This letter is to inform you about conditions, schedules and directions Barger Gulch, Ditch Creek, Bighorn Shelter, Shoshone Canyon, and Black Mountain field projects. For directions to campsites please contact the principal investigator or Lynda Payne (307) 766-6920. Work is broken down into approximately 10-day sessions with four-day breaks. The work dates for each ten-day session of the projects are:

**2006 Frison Institute Project Dates**

- Barger Gulch: (Surovell-Waguespack) 5/29-6/7, 6/12-6/21, 6/26-7/5, 7/10-7/19
- Ditch Creek: (Kelly) 5/29-6/7
- Bighorn Shelter: (Kelly) 6/27-7/6
- Shoshone Canyon: (Kelly) 7/10-7/14
- Bighorn Shelter Geoarchaeology: (Kelly) 7/16-7/26
- Black Mountain/Bighorn Shelter: (Kornfeld) 7/24-8/2, 8/7-8/16, 8/21-8/28

If you intend to spend an entire ten-day session at any of the projects, please arrive at camp on the day before work begins. Also, you may be asked to return to Laramie at the close of the project to help unload equipment.

Some sites are at relatively high altitudes (about 8,000 ft) and cold, near freezing temperatures are possible. In addition to being cold, it may also be wet, so cold and wet weather clothing is a must. That means a good sleeping bag, long underwear, warm parka, poncho, waterproof shoes, and a tent that will keep you and your equipment dry. Of course, it is just as likely that the weather will be warm/hot and dry, so plan for both and you'll be safe. Exposure to the elements at high altitudes also requires plenty of water, sunscreen, hats, etc. Hot weather may require salt pills and definitely water containers that can hold at least 2 quarts of water. Mosquitoes, gnats, and ants are frequent visitors so be sure to bring insect repellent. Small tents get old after a while, so if you can spring for a tent you can stand up in and put a cot in, it's a good idea, but keep in mind that it had to be able to stand up to extreme winds and storms. Think of your comfort while camping. After working all day, a little comfort will be desirable. Other odd items that are a good idea include: solar shower (we will try to provide a shower enclosure for privacy), flashlight, extra batteries, large 3-gallon water container, etc. Most camps are dry camps; we haul water in but conservation is a must. Contact Marcel Kornfeld at (307) 766-3548 or Lynda Payne at (307) 766-6920 for conditions specific to each camp and project.

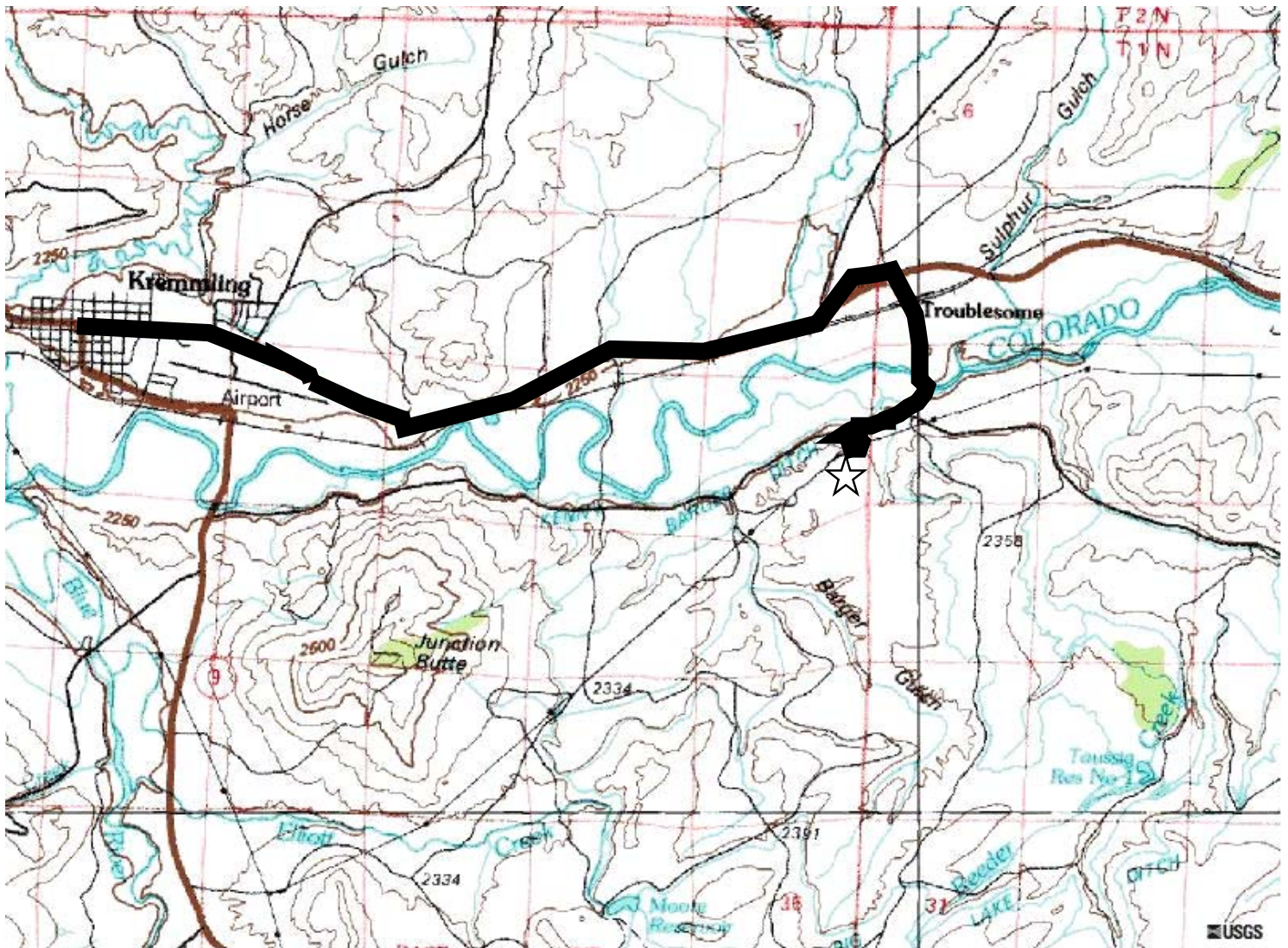
\* We will have a University vehicle in the field and you may have to drive it in an emergency situation. The University is self-insured and it is a good idea to put an "Un-owned Vehicle" coverage rider on your current car insurance. These are fairly inexpensive, but check with your insurance company. Otherwise in case of an accident you may be liable for up to \$100,000.

For directions to Ditch Creek, Bighorn Shelter, Shoshone Canyon or Bighorn Shelter Geoarchaeology please contact Dr. Robert L. Kelly (307) 766-3135 or [rlkelly@uwyo.edu](mailto:rlkelly@uwyo.edu).



## DIRECTIONS TO PROJECTS

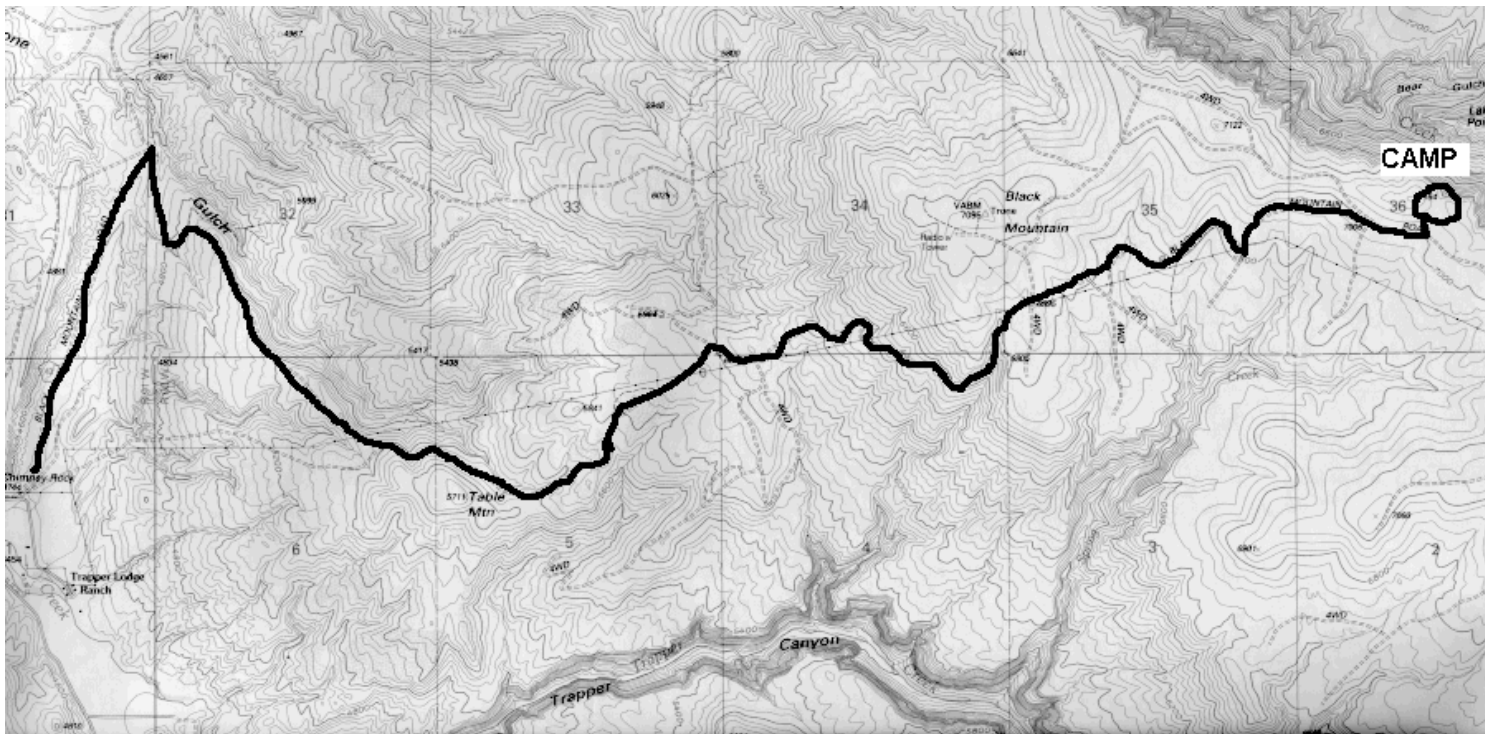
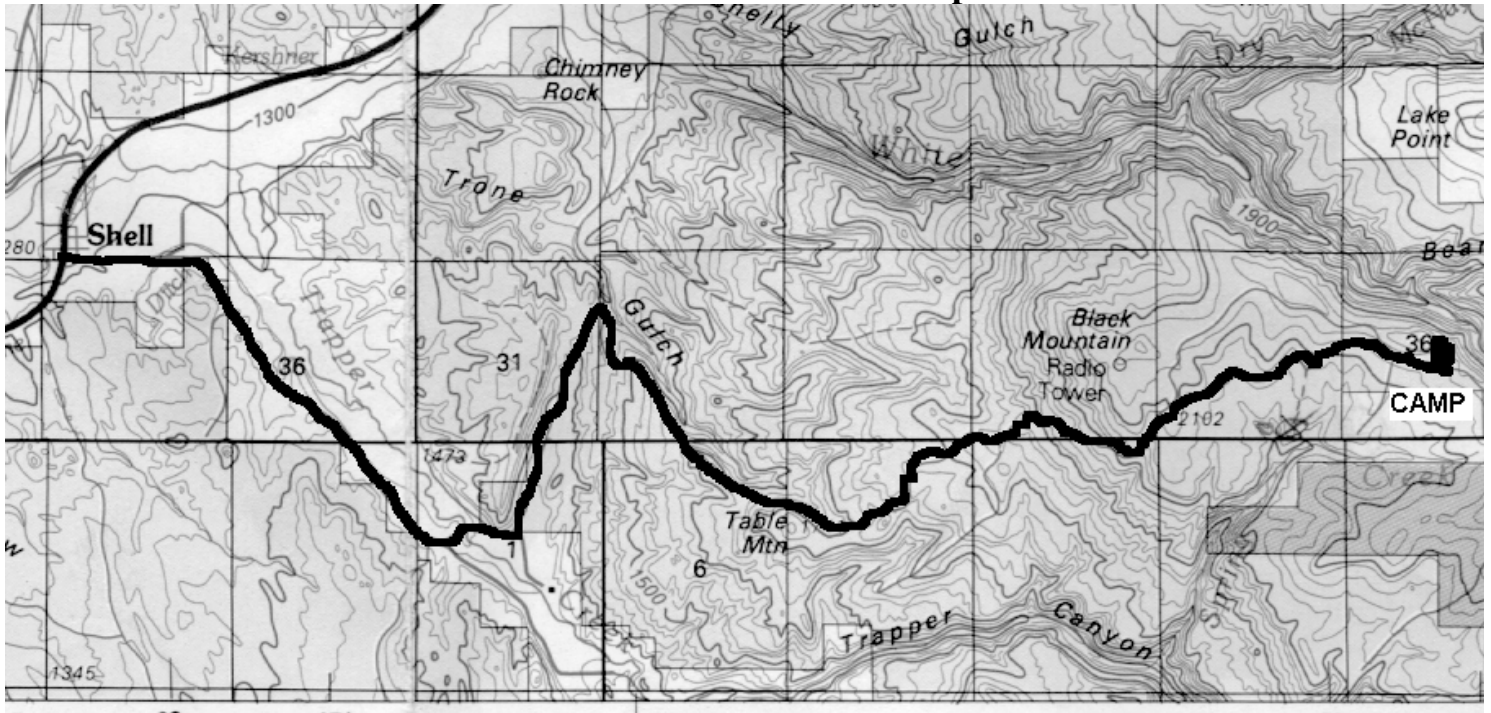
## Barger Gulch

**Directions to Barger Gulch Camp:**

From Kremmling, CO go east on Rt. 40 for 6 to 7 miles. Shortly after crossing Troublesome creek, you will rise up a small hill. Turn right on Grand County Rt. 39 at an intersection marked by 6 or 7 mailboxes. You will then drop onto the floodplain of the Colorado River and pass by the Palmer ranch house. Cross the railroad tracks and the Colorado River. At a second ranch house, the road forks. Turn right. Go approximately ¼ of a mile and turn left. You will rise up onto a high terrace above the Colorado River. We will be camping just beyond electrical substation.



### Black Mountain Field Camp



#### Directions to Black Mountain Field Camp:

Find Shell Wyoming on Wyoming highway map. From Shell (top map), follow the Trapper Creek road for about 3 mi. At the end of the pavement turn left across the creek and around chimney Rock. From this point on you will need a **4-wheel drive** (bottom map). Follow the Black Mountain Road for about 7 mi. The turn off from the Black Mountain Road will be flagged. The road is quite rough in places even for a 4-wheel drive and **following a guide vehicle is recommended.**