

The background is a light blue gradient with several realistic water droplets of various sizes scattered across the surface. The droplets have highlights and shadows, giving them a three-dimensional appearance.

# WORKING AT THE R&E CENTERS - 2017

# INTRODUCTION

- PROCEDURES ARE GOING TO VARY BY CENTER
- FIRST TIME YOU GO, STOP IN AT THE MAIN OFFICE

# ALL CENTERS

- SIGN IN AND OUT EVERY TIME YOU ARE AT A CENTER
  - SAFETY
  - IF YOU DO NOT SIGN OUT, WE WILL BE LOOKING FOR YOU

# WORKER PROTECTION STANDARDS

- LOCATE THE SAFETY AND PESTICIDE INFORMATION
- YOU MUST CHECK THIS BOARD EVERY DAY YOU ARE ON THE CENTER
- IF YOU ARE CONCERNED ABOUT A RESTRICTED ENTRY ON YOUR PLOT, CALL THE CENTER BEFORE YOU LEAVE LARAMIE
- IF A GRADUATE STUDENT, FACULTY MEMBER IS RESPONSIBLE TO TRAIN YOU ON WPS. IT IS YOUR RESPONSIBILITY TO FOLLOW THE RULES AND PROCEDURES
- IF YOU ARE APPLYING ANY CHEMICAL WITH AN AGRICULTURAL USE LABEL, YOU MUST TELL US AND GET IT INTO OUR RECORDS

# WPS TRAINING

- PESTICIDE APPLICATORS LICENSE
- FACULTY RESPONSIBLE FOR TRAINING STUDENTS
- NEED TO PROVIDE CENTER WITH DOCUMENTATION

# SAFETY

- PRIMARY CONCERN AT ALL CENTERS
- APPROPRIATE CLOTHES AND FOOTWEAR, HATS, SUNSCREEN, ETC.
- BRING PLENTY OF WATER, IF YOU FORGET, COME TO THE OFFICE
- BESIDES AGRICULTURAL PRACTICES THERE ARE CRITTERS LIKE RATTLESNAKES, BEES, SPIDERS, MOSQUITOS, ETC.

# EQUIPMENT

- MAKE ARRANGEMENTS IN ADVANCE IF YOU NEED TO BORROW
- MAKE SURE YOU KNOW HOW TO USE THE EQUIPMENT
- CONTACT THE FARM MANAGER

# SAREC AND PREC RESIDENCE HOUSES

- ROOMS OR A TRAILER YOU CAN RENT FOR A LOW COST COMPARED TO A HOTEL OR DRIVING BACK AND FORTH
- BEDROOMS, BATHROOMS, KITCHENS, TV, AND INTERNET
- MAKE YOUR RESERVATIONS IN ADVANCE IF POSSIBLE

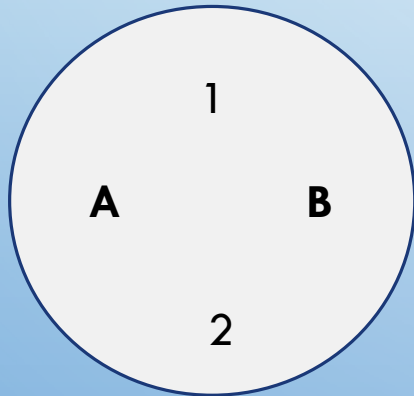


# SAREC LABS

- WET AND DRY LABS MAY BE AVAILABLE FOR YOUR USE
- MAKE ARRANGEMENTS WELL IN ADVANCE
- MAKE SURE YOU ARE TRAINED FOR WHAT YOU NEED TO DO
- LABS ARE **NOT** FOR LONG-TERM STORAGE OF SAMPLES
  - IF YOU NEED STORAGE, WORK WITH CENTER STAFF TO FIND AN APPROPRIATE PLACE
  - LABEL EVERYTHING WITH YOUR NAME, ADVISOR'S NAME, DATE, AND SPECIMEN ID

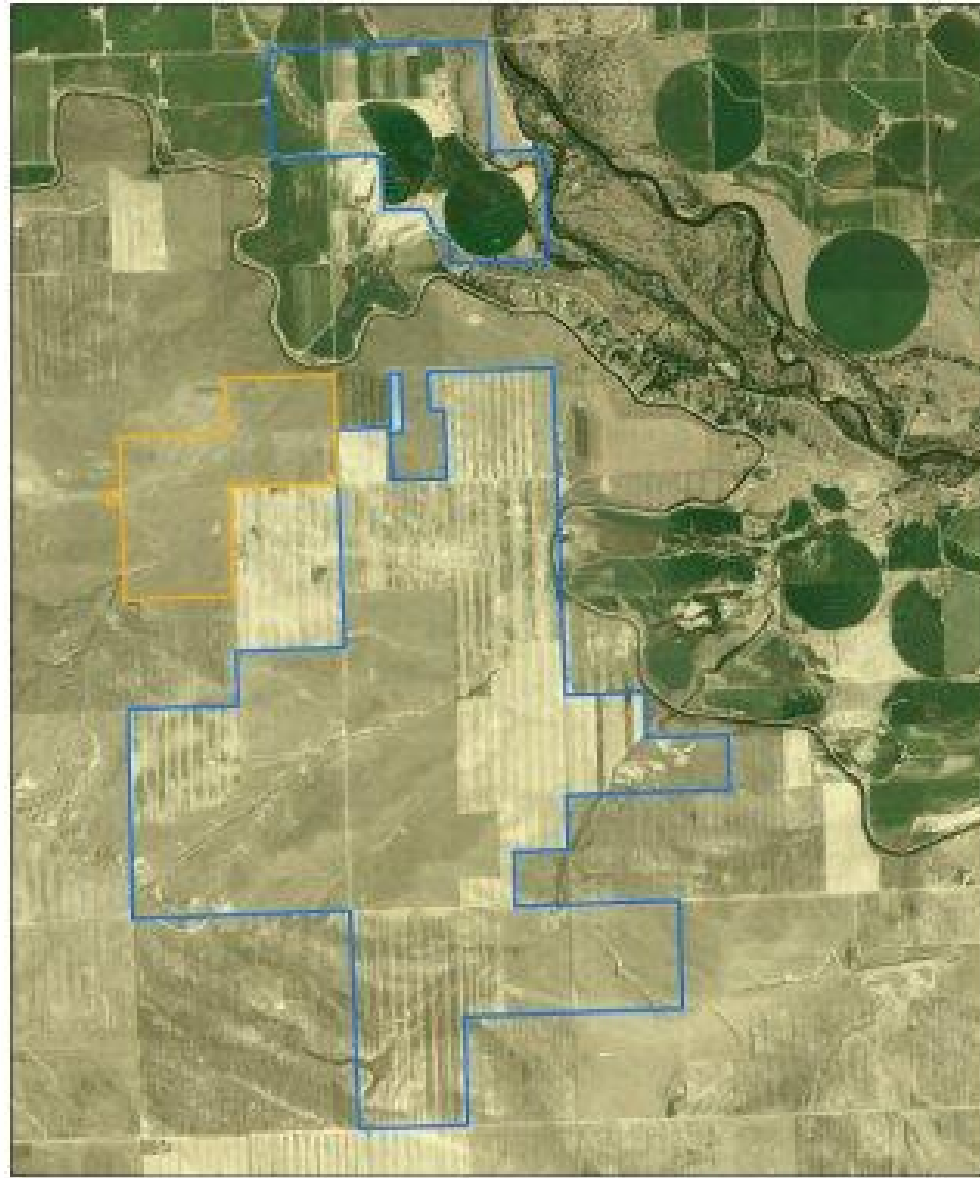
# SAREC PLOT LOCATIONS

- WE ARE DOING ALL WE CAN TO HELP YOU LOCATE YOUR PLOTS
- AT SAREC, UNDER THE LATERAL SPRINKLER, POSTS ARE AT ONE END IDENTIFYING THE GRID. IN ADDITION, IN THE CORNERS WILL BE A DISK MARKED WITH THE GRIDS



# PART OF SAREC

NOT SHOWN IS THE  
ROGERS RESEARCH  
SITE ON LARAMIE  
PEAK



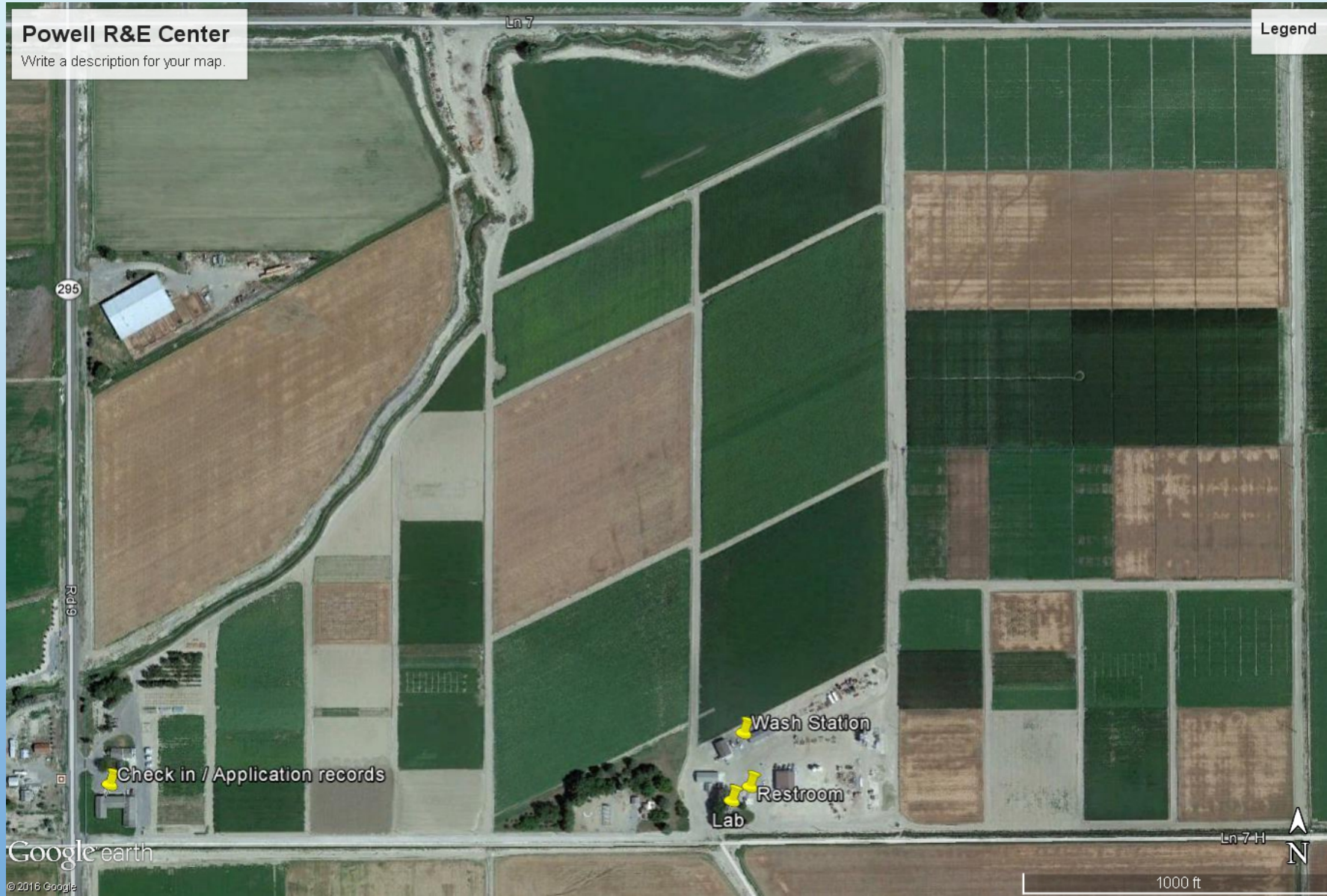
1 inch equals 1 mile



# PREC LABS AND ACTIVITIES

- MAKE ARRANGEMENTS WELL IN ADVANCE
- CHECK ON AVAILABLE LAB EQUIPMENT
- LABS NOT FOR LONG-TERM STORAGE
- WORK WITH FARM MANAGER

# POWELL R&E CENTER



# SHREC

- TWO LOCATIONS
- WORK WITH FARM MANAGER IF EQUIPMENT NEEDED
- LONGER-TERM HOUSING MAY BE AVAILABLE THROUGH SHERIDAN COLLEGE



- Drying ovens
- Wet and dry lab space
- Growth chamber space
- 5,000 ft<sup>2</sup> greenhouse
- Temporary sample storage
- Potential for cost-sharing summer interns/research assistants

# LREC

- MULTIPLE LOCATIONS
- GREENHOUSE IS ONLY AREA THAT WILL FALL UNDER WPS
- OTHER UNITS EITHER EXEMPT OR DO NOT USE CHEMICALS



# LARAMIE R&E CENTER

McGuire Ranch and other units

