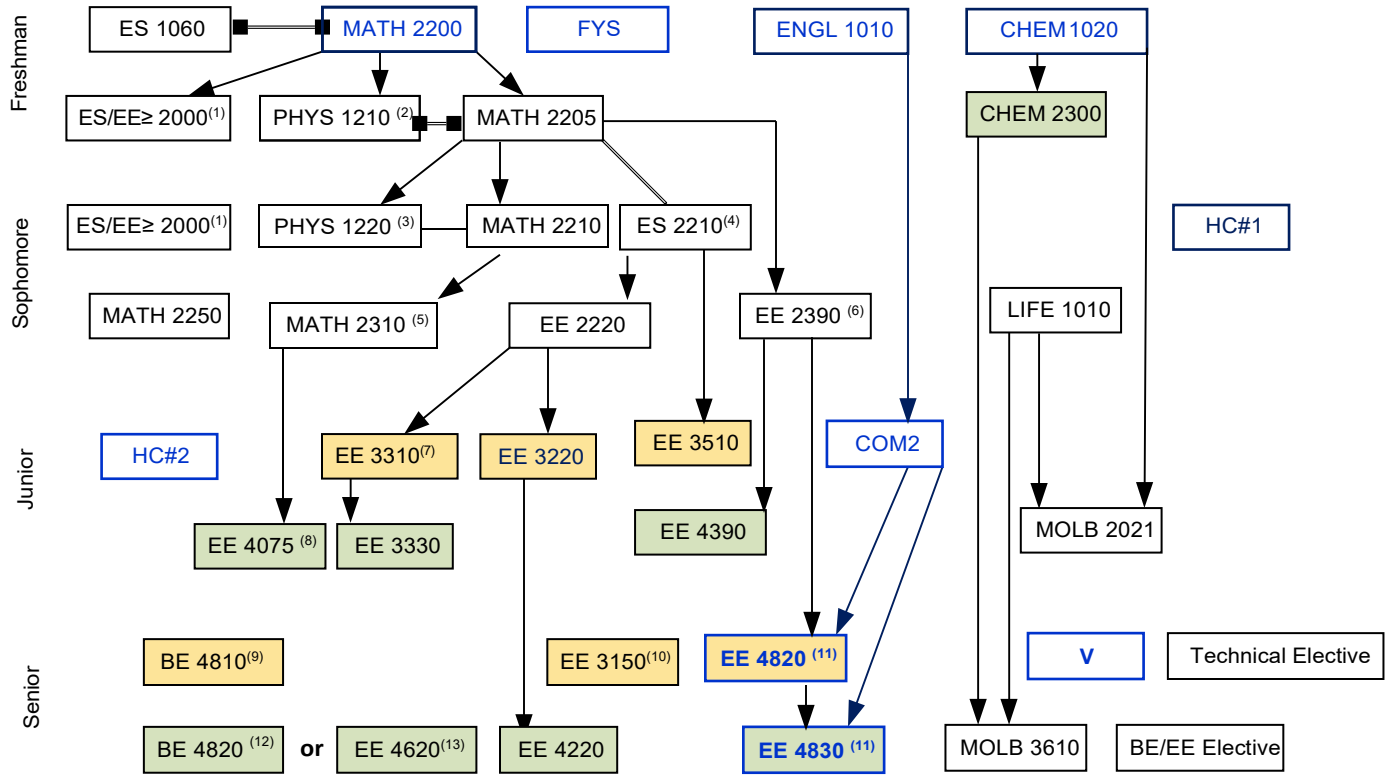


Electrical Engineering Flow Chart (AY20-21, AY21-22)

Bio-Engineering Option



→ Prerequisite "C" or better required for all EE prerequisite courses

--- Concurrent enrollment

Offered Spring Only

Offered Fall Only

USP Course

- (1) ES/EE ≥ 2000 elective: any ES, EE, BE course (≥ 2000 level), or COSC 3011 or COSC 3750.
- (2) Students receiving credit for PHYS 1210 cannot receive credit for PHYS 1050, 1110, or 1310. Prerequisites: a grade of C or higher in MATH 2200 and concurrent enrollment in MATH 2205.
- (3) PHYS 1220 Prerequisites: grades of C or higher in MATH 2200 and 2205, and concurrent enrollment in MATH 2210. PHYS 1220 should be taken before or concurrently with ES 2210.
- (4) ES 2210 Prerequisites: MATH 2205 or concurrent enrollment.
- (5) MATH 2310 Prerequisites: grade of C or better in MATH 2205 and MATH 2210.
- (6) EE 2390 Prerequisites: COSC 1010 or COSC 1030 or ES 1060, and MATH 2205.
- (7) EE 3310 Prerequisites: PHYS 1220 or PHYS 1320 and EE 2220 as a corequisite.
- (8) EE 4075 Prerequisites: MATH 2205 and (COSC 1010 or ES 1060) and (MATH 2250 or MATH 2310).
- (9) BE 4810 Prerequisites: ES 2210 or similar electric circuit course.
- (10) EE 3150 Prerequisites: ES 2210, MATH 2210, and PHYS 1220 or concurrent enrollment.
- (11) COM3 to satisfy this requirement with EE 4820/4830 the COM2 course must be taken before EE 4820 and EE 4820 and EE 4830 must be taken in sequence. Prerequisites: EE 2220, EE 2390, and EE 3310 or concurrent enrollment, plus 6 hours of 4000 level EE/BE classes, or concurrent enrollment.
- (12) BE 4820 Prerequisite: EE 3220 or consent of instructor
- (13) EE 4620 Prerequisite: EE 2220 or ME 3020

Students must have a minimum cumulative GPA of 2.0 in all Engineering courses for graduation. A grade of C (2.0) or higher is required for all prerequisite courses.

Students must complete a minimum of 42 hours of upper division coursework, 30 of which must from the University of Wyoming. Technical Elective: Any course marked as technical electives in the ECE Math/Science Elective List.