



**Laramie Research and Extension Center**

1174 Snowy Range Road, Laramie, WY 82070  
(307) 766-3665

November 19, 2018

TO: Ram Test Consignors

From: Whit Stewart, PhD., Extension Sheep Specialist, 307-766-5374, [whit.stewart@uwyo.edu](mailto:whit.stewart@uwyo.edu)

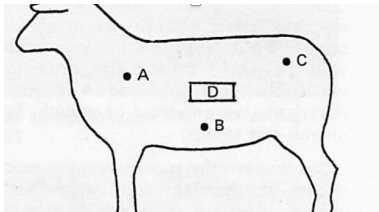
Kalli Koepke, LREC Assistant Manager/ Sheep Unit Manager, 719-314-6571, [kkoepke@uwyo.edu](mailto:kkoepke@uwyo.edu)

Ram Test Participant:

Rams were weighed this morning and have met our expectations for growth and performance at 1.0 lb. per day average daily gain. Those rams that participated in the pasture-based test and likely those that were delivered for the start of this test are exhibiting some compensatory growth which we anticipate will moderate some during the next 28 days.

A couple of reminders by way of Kalli, 1) we are still missing some initial data from consignors (check initial spreadsheet), 2) please get registrations completed for certification eligibility. To verify information or to double check ear tags please call **Kalli** directly **719-314-6571**.

As a side note we are trying to collect micron data on rams that have been on previous ram tests to determine the respective change in micron once rams go back to the ranch. In other words, we all know that both wool growth and micron increase on higher planes of nutrition and that fiber diameter (micron) produced on test environments is much greater than what will be produced at the ranch. Thus, if you have rams that have participated in ram test over the past five years that are still on the ranch we'd like you to take a side sample with the exact ram ID that can be correlated to the test ID. Ideally we would prefer that you save the whole fleece so that we can core it, but if this is not feasible please take the sample from the side (see D in image) as this will allow us to make valid comparisons. If you have any questions please don't hesitate to give me a call 307.766.5374



We hope you have a great Thanksgiving holiday close to friends and family.

Sincerely,

Whit Stewart  
Kalli Koepke

