



# Sculpture

## A Wyoming Invitational

An exhibition of outdoor public art on the campus of the University of Wyoming & in the City of Laramie

### Walking and Driving Tour Guide

#### August 2010

**S**culpture: A Wyoming Invitational was organized in 2008 in response to the University of Wyoming Art Museum's extended closure for renovations in the galleries, and to the increasing interest in public art for our campus and community.

Originally, seventeen sculptures by sixteen artists were on view on the campus of the University of Wyoming and across the City of Laramie. Also, by special invitation, the artists of Ark Regional Services created an outdoor work for their Creative Arts Center.

All of the sculptures for the exhibition are on loan; five of the original works are no longer on view. In 2009, one new work was added to the exhibition. Today, fourteen works remain on view.

For this brochure, permanent public art on campus and in Laramie have been identified and added, making this a comprehensive guide to public art in our community.

*Sculpture: A Wyoming Invitational* has been organized by the University of Wyoming Art Museum in cooperation with the University of Wyoming, various agencies in the City of Laramie, and the Albany County Public Library.

For more information, call 307-766-6622 or visit [www.uwyo.edu/artmuseum](http://www.uwyo.edu/artmuseum) or [www.uwartmuseum.blogspot.com](http://www.uwartmuseum.blogspot.com)



Dial (307) 200-0040 from your cell phone for the audio tour of *Sculpture: A Wyoming Invitational*. Look for the cell phone symbol next to sculptures and press the corresponding number, followed by the pound key.



**University of Wyoming Art Museum**  
2111 Willett Dr, Laramie, WY

Art Museum hours: Mon. through Sat., 10 a.m. - 5 p.m.  
Mon. until 9 p.m. in Feb. - Apr., Sept. - Nov.  
UW is closed Dec. 24 - the first week of January

# Sculpture

## A Wyoming Invitational

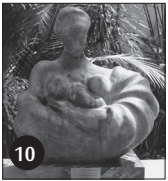
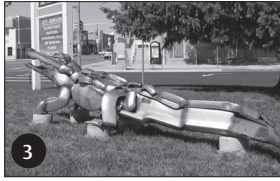
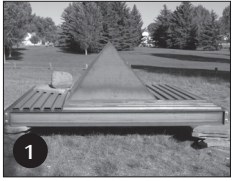
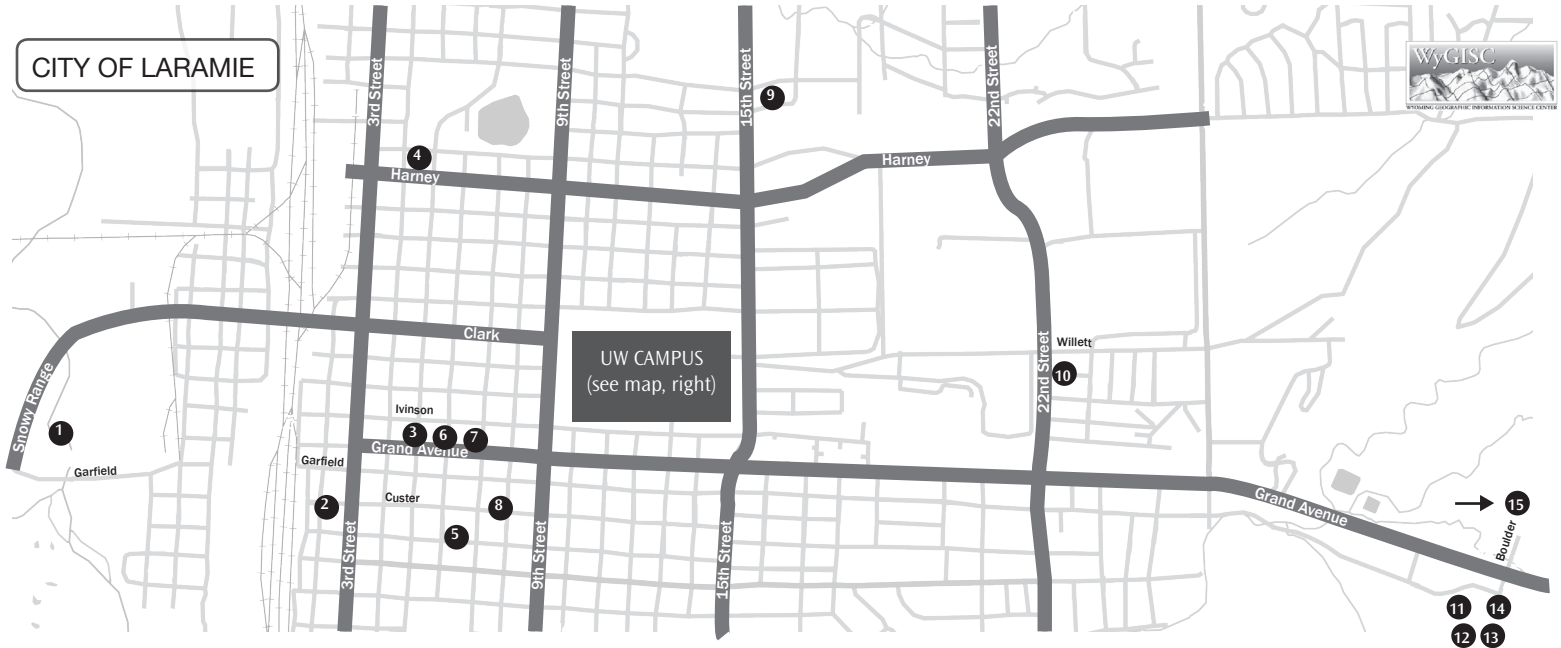
### The Artists in Sculpture: A Wyoming Invitational

Stan Dolega  
Linda Fleming

John Henry  
Jun Kaneko

John Kearney  
Charles Long  
Jesús Morales

Charles Parson  
Carl Reed  
Robert Russin



1. Stan Dolega (American, b. 1943), *Vedaauwoo Modernized*, 2008, steel, rock, 10 x 10 x 8 ft, lent by the artist; Optimist Park
2. \*John Baker (American), *The Franchise*, bronze; 307 South 2<sup>nd</sup> Street
3. John Kearney (American, b. 1921), *Alligator*, 1973, chrome plated steel, welded, 26-1/2 x 115 x 24 in, University of Wyoming Art Museum Collection, gift of Mr. Harris J. Klein, 1974.3; Fourth & Garfield
4. Artists of ARK, *Synergy: A Tribute to Alexander Calder*, 2008, steel and mixed media, size variable, made possible by a grant from the Wyoming Arts Council; 1174 N. Fourth
5. Robert Russin (American, 1914 – 2007), *First Steps*, ca. 1972, bronze, 5 x 6-1/2 x 3-1/2 ft, University of Wyoming Art Museum Collection, gift of Isadore Familian, 1991.23; Undine Park
6. \*Anonymous, *Eagle*, bronze, commissioned by Edward Iverson in 1922, dedicated 1924; Albany County Courthouse, 420 East Iverson Avenue
7. \*David Reif (American, b. 1941); Albany County Courthouse, 420 East Iverson Avenue (installation date to be announced)
8. \*Florence Ware (American, 1891 – 1971), four murals; Laramie Plains Civic Center (auditorium), 710 East Garfield Street
9. \*Blair Muhlestein (American), *Lickety Split*, bronze; Reynolds Crossing, 1267 North 15<sup>th</sup> Street
10. \*Robert I. Russin (American, 1914 – 2007), *Fulfillment*, bronze; Iverson Memorial Hospital, 255 N. 30<sup>th</sup> Street
11. John Henry (American, b. 1943), *River High*, 2008, painted steel, 55 ft tall, lent by the artist; Laramie Recreation Center, 920 Boulder Dr.
12. \*Robert I. Russin (American, 1914 – 2007), *Sea Spirits*, bronze; Recreation Center (lobby), 920 Boulder Dr.
13. \*Vince Valdez (American), *Catching the Spirit*, 2006, bronze; Laramie County Community College, 1125 Boulder Dr.
14. \*Don Berry (American), *Bison*, barbed wire; Mountain West Farm Bureau, 931 Boulder Dr.
15. \*Robert I. Russin (American, 1914 – 2007), *Abraham Lincoln Memorial Monument*, 1959, bronze; Welcome Center, exit 323, I-80
16. Linda Fleming (American, b. 1945), *Refugium*, 2007, laser cut steel, 105 x 228 x 108 in, lent by the artist; Classroom Building, 9th Street
17. \*Mosaics by James Boyle, Joseph Dederick, Richard Evans, and Victor Flack; Classroom Building (interior), 9th Street
18. \*Indoor art by local and student artists on the UW Campus
  - a. Old Main
  - b. College of Health Sciences
  - c. Coe Library
  - d. Wyoming Union
  - e. Fine Arts Building
  - f. Fraternity Row
19. Wanxin Zhang (Chinese, b. 1961), *Waiting*, 2007, glazed ceramic, 76 x 24 x 18 in, University of Wyoming Art Museum Collection, Patricia S. Guthrie Special Exhibits Endowment and the National Advisory Board of the UW Art Museum Purchase; Old Main (room 206)
20. \*Robert I. Russin (American, 1914 – 2007), *Ben Franklin*; south of the College of A&S

Ursula von Rydingsvard

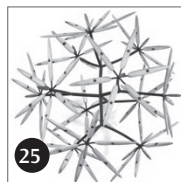
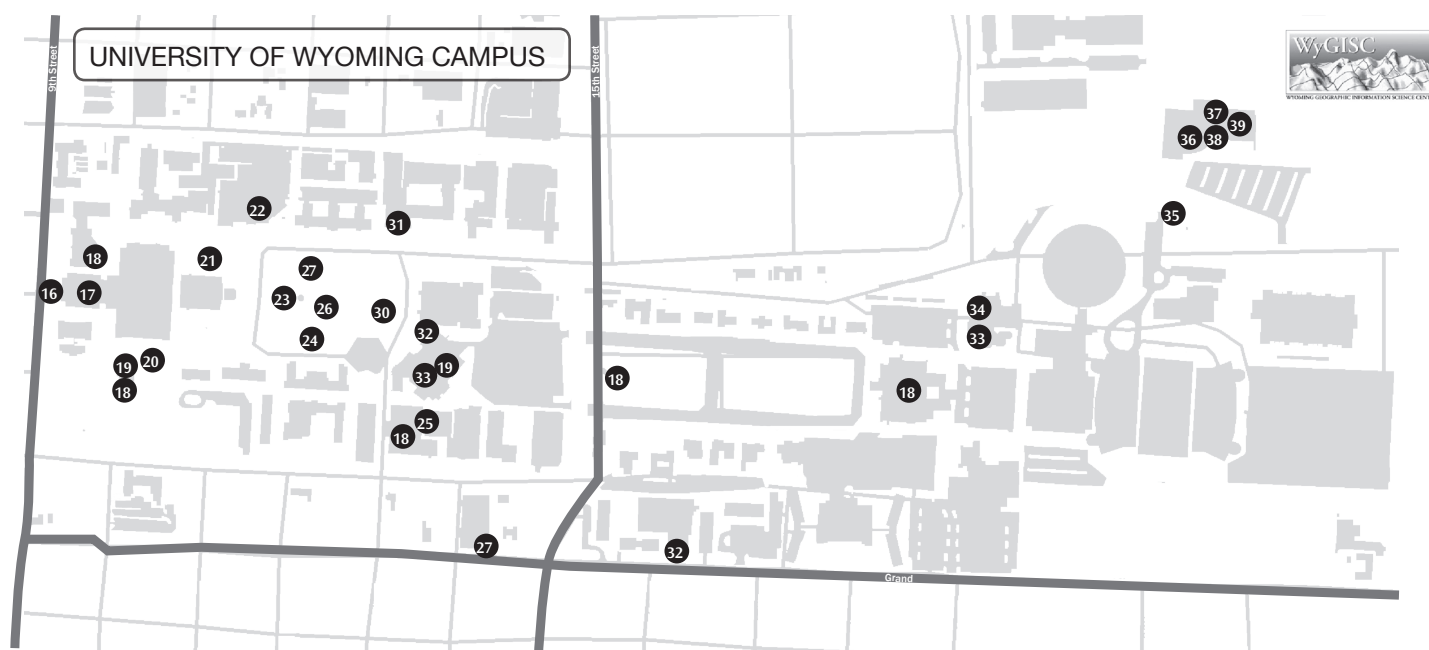
Wanxin Zhang

And by special invitation, the artists of

Ark Regional Services

# \*Art on permanent view in Laramie and at the University of Wyoming

Art inside university buildings may be seen during public hours.



21. Ashley Hope Carlisle (American, b. 1975); north of the College of A&S (installation date to be announced)
22. \*John Walley (American, b. 1910), mural; UW College of Engineering (interior)
23. Carl Reed (American, b. 1944), *Braced Ring with Outlyer*, 2008, stone, steel, dimensions variable, lent by the artist; Prexy's Pasture
24. Charles Parson (American, b. 1948), *Molto Allargando*, 65-ft long, steel, glass, plastic, earth, lent by the artist; Prexy's Pasture
25. \*James Surls (American, b. 1943), *Rolling Flower*, 2009, painted steel, bass wood, mahogany wood, 11 x 11 x 11 feet, commissioned and purchased by UW Libraries; UW Libraries commission; Coe Library (5th floor)
26. \*Robert I. Russin (American, 1914 – 2007), *University of Wyoming Family*, marble; Prexy's Pasture
27. \*D. Michael Thomas (American, b. 1954), *Talk About Your Cowboy*, 2008, bronze; Alumni House, Grand & 14th
28. Jesús Moroles (American, b. 1950), *Granite Windows*, 2008, found steel tank and granite, 7 ft tall x 8 ft

29. \*Edward Grigware (American, 1889 – 1960), *Knowledge is the Light of Destiny*, 1952, UW College of Education (lobby)
30. \*Dan Ostermiller (American, b. 1956), *Daydreamer*, 2001, bronze; Wyoming Union
31. \*Lynn Fausett (American, 1894 – 1977), *Western Welcome*, 1940, mural; Wyoming Union (ballroom)
32. \*Dave McGary (American, b. 1958), *Battle of Two Hearts*, 2006, painted bronze; Washakie Center
33. \*Jerry Palen (American), *Socrates*, bronze; College of Law (entrance)
34. \*Virginia Pitman (American), *Evolution of Law*, painting; UW College of Law (interior)
35. \*Peter Fillerup (American, b. 1953), *Fanning a Twister* ("Steamboat"), dedicated in 1990, bronze; Rochelle Athletics Center
36. Jesús Moroles (American, b. 1950), *Eclipse*, Vermont granite, 78-1/2 x 33-1/4 x 7-1/2 inches, 1990, University of Wyoming Art Museum Collection, gift of Harvey and Mireille Katz, in honor of Olga Mordo, 1998.8; UW Art Museum terrace

37. Ursula von Rydingsvard (Polish/Ukrainian, b. 1942), *Doolin Doolin*, 1995-1997, cedar and graphite, 83 x 212 x 77 in, private collection; UW Art Museum terrace
38. Jun Kaneko (Japanese, b. 1942), *Untitled Dango*, glazed ceramic, 75-1/2 x 59 x 29 inches, 2001, University of Wyoming Art Museum Collection, Purchased by Patricia R. Guthrie, the W. Sherman Burns Estate, and the University of Wyoming Art Museum Acquisition Funds, 2004.3; UW Art Museum rotunda
39. Charles Long (American, b. 1955), *Untitled*, papier maché, plaster, steel, acrylic, river sediment, 127 x 36 x 39 inches, 2008, University of Wyoming Art Museum Collection, Gift of Jeanne and Michael L. Klein, 2009.1; UW Art Museum rotunda



# University of Wyoming Art Museum

## Cell Phone Audio Tour

### *Sculpture: A Wyoming Invitational*

Dial **307-200-0040** from your cell phone.  
Look for this cell phone audio symbol next to works of art:



Press the corresponding number, followed by the pound key.

| Audio Tour Number                       |   | Location Number |
|---|---|-----------------|
| 1                                       | Audio Tour Instructions   |                 |
| 2                                       | General Museum Information  |                 |
| 3                                       | Introduction to <i>Sculpture: A Wyoming Invitational</i>          |                 |
| 4                                       | Stan Dolega, <i>Vedauwoo Modernized</i>                           | 1               |
| 5                                       | John Kearney, <i>Alligator</i>                                    | 3               |
| 6                                       | The Artists of Ark, <i>Synergy: A Tribute to Alexander Calder</i> | 4               |
| 7                                       | Robert Russin, <i>First Steps</i>                                 | 5               |
| 9                                       | Linda Fleming, <i>Refugium</i>                                    | 16              |
| 10                                      | Wanxin Zhang, <i>Waiting</i>                                      | 19              |
| 11                                      | Carl Reed, <i>Braced Ring with Outlyer</i>                        | 23              |
| 13                                      | Jesús Moroles, <i>Granite Windows</i>                             | 28              |
| 14                                      | Charles Parson, <i>Molto Allargando</i>                           | 24              |
| 15                                      | Ursula von Rydingsvard, <i>Doolin Doolin</i>                      | 37              |
| 16                                      | Jun Kaneko, <i>Untitled Dango</i>                                 | 38              |
| 17                                      | Jesús Moroles, <i>Eclipse</i>                                     | 36              |
| 18                                      | John Henry, <i>River High</i>                                     | 11              |
| 19                                      | Charles Long, <i>Untitled</i>                                     | 39              |
| <b>On permanent view at Coe Library</b> |   |                 |
| 25                                      | James Surls, <i>Rolling Flower</i>                                | 25              |

**We welcome your feedback!**

We encourage you to leave comments  
and suggestions. Press 0,  
followed by the pound key, to leave us  
your comments and suggestions.

Funding for this program is provided by the Wyoming Arts Council through the Wyoming State Legislature and the National Endowment for the Arts, which believes a great nation deserves great art.

## Special Thanks

Special thanks to Don Bath, Bath Ranch and Lefty Cole, Deerwood Ranch, for opening their ranches to Patrick Dougherty to collect saplings for *Shortcut*; Cheyenne Solid Waste Division for delivering red mulch for Steven Siegel's *It goes under*; and Lonn Mullins and Ben Hornok, Haselden Construction and Flint Polson, Coffey Engineering & Surveying for the concrete pad for John Henry's *River High*.

We are most appreciative for the support of this project from Tom Buchanan, UW president; Phill Harris, former UW vice president of administration; Myron Allen, UW vice president of academic affairs; Jim Scott, director, UW physical plant; Paul Harrison, director, and Mike Zook, manager, Laramie Parks & Recreation; Susan Simpson, director, Albany County Public Library, and Paul Heimer, director, Albany County Public Library Foundation. Special thanks to Rachael Sisneros and the amazing crew from UW's physical plant. We also thank Klaus Hansen, former mayor, and the City Council; Cara Griffin, former director, Laramie Main Street Program; Patricia Colberg and the Friends of Undine Park; Dan Furphy, chair, Laramie Beautification Committee; and Mary Arnold, director, Ark Creative Art Center for their enthusiastic support of this project. Congratulations to all the artists of Ark Regional Services who participated in *Synergy*!

We are most grateful for the financial support of this project and thank our anonymous sponsor and the National Advisory Board of the UW Art Museum for their commitment to this program. Thank you also Gary Negich, president, First Interstate Bank; Ken Grunkemeyer, president, American National Bank; FMC Corporation; Richard & Judith Agee; John & Mari Ann Martin; Fred Ockers and the Albany County Tourism Board; the Guthrie Family Foundation; the Elizabeth Firestone Graham Foundation; Rocky Mountain Power Foundation; Murdock Law Firm, P.C.; and Wyoming Public Radio for your support of this program. We are also happy to recognize the grants from the Wyoming Cultural Trust Fund and Wyoming Arts Council's Community Partnership Program and Grants to Organizations for making this project possible.

## Funding

*Sculpture: A Wyoming Invitational* was made possible through the generosity of an Anonymous Sponsor and the National Advisory Board of the UW Art Museum.

With additional funding from the UW President's Office, UW Academic Affairs Office, UW Physical Plant, Wyoming Cultural Trust Fund, FMC Corporation, Richard & Judith Agee, John & Mari Ann Martin, American National Bank, First Interstate Bank of Laramie and First Interstate Bancsystem Foundation, Elizabeth Firestone Graham Foundation, Guthrie Family Foundation, Rocky Mountain Power Foundation, Murdock Law Firm P.C., Albany County Tourism Board, Laramie Parks & Recreation, Laramie Economic Development Corporation and the Laramie Beautification Committee, Wyoming Public Radio, Albany County Library Foundation, and the Wyoming Arts Council through the Wyoming State Legislature and the National Endowment for the Arts, which believes a great nation deserves great art.



Wyoming Arts Council  
**ARTS. PARKS. HISTORY.**  
Approved in part by the Wyoming State Council on the Arts  
from the National Endowment for the Arts and the Wyoming State Legislature

