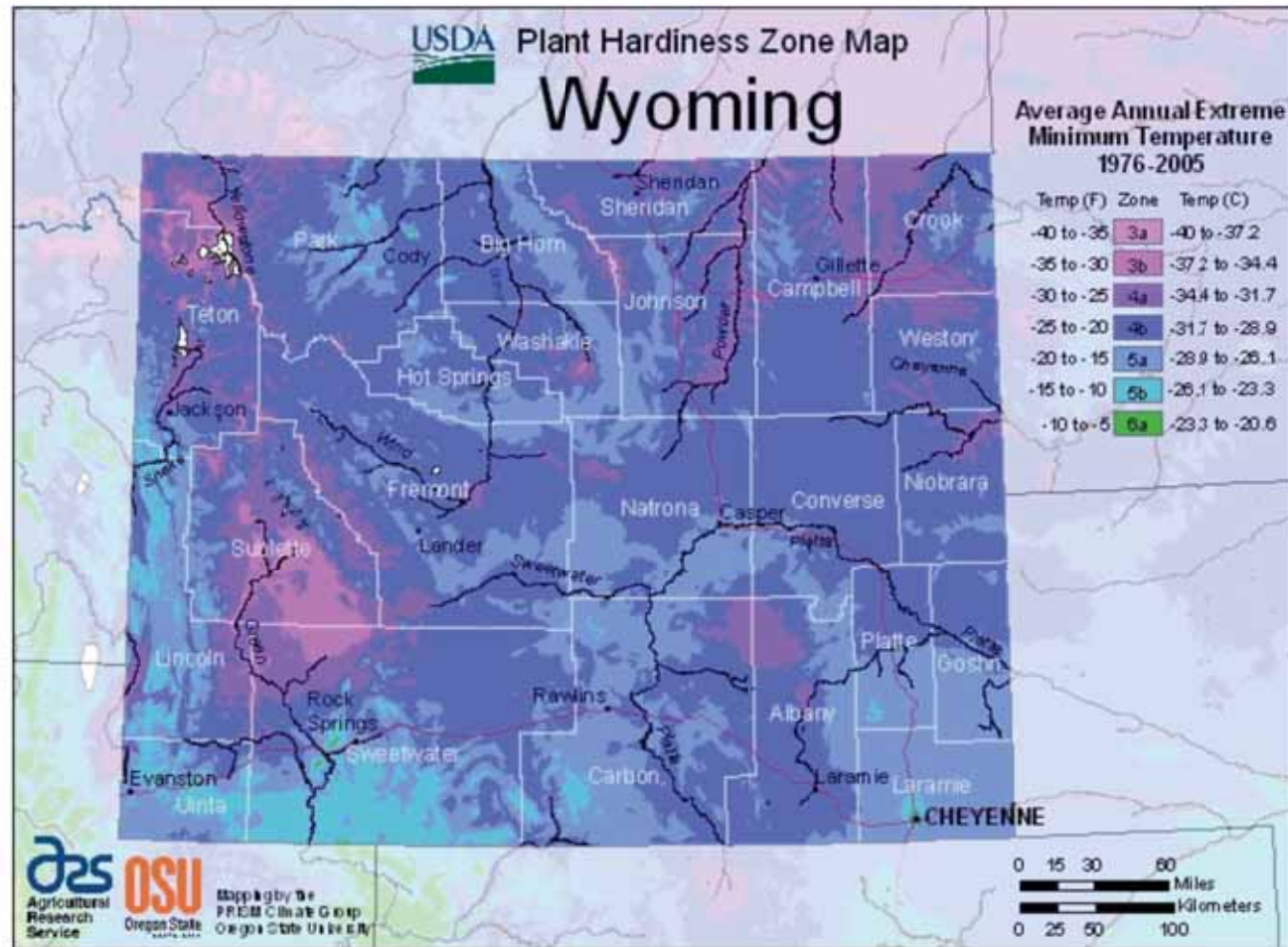


SEASON EXTENSION CONSIDERATIONS FOR ANNUAL VEGETABLE PRODUCTION



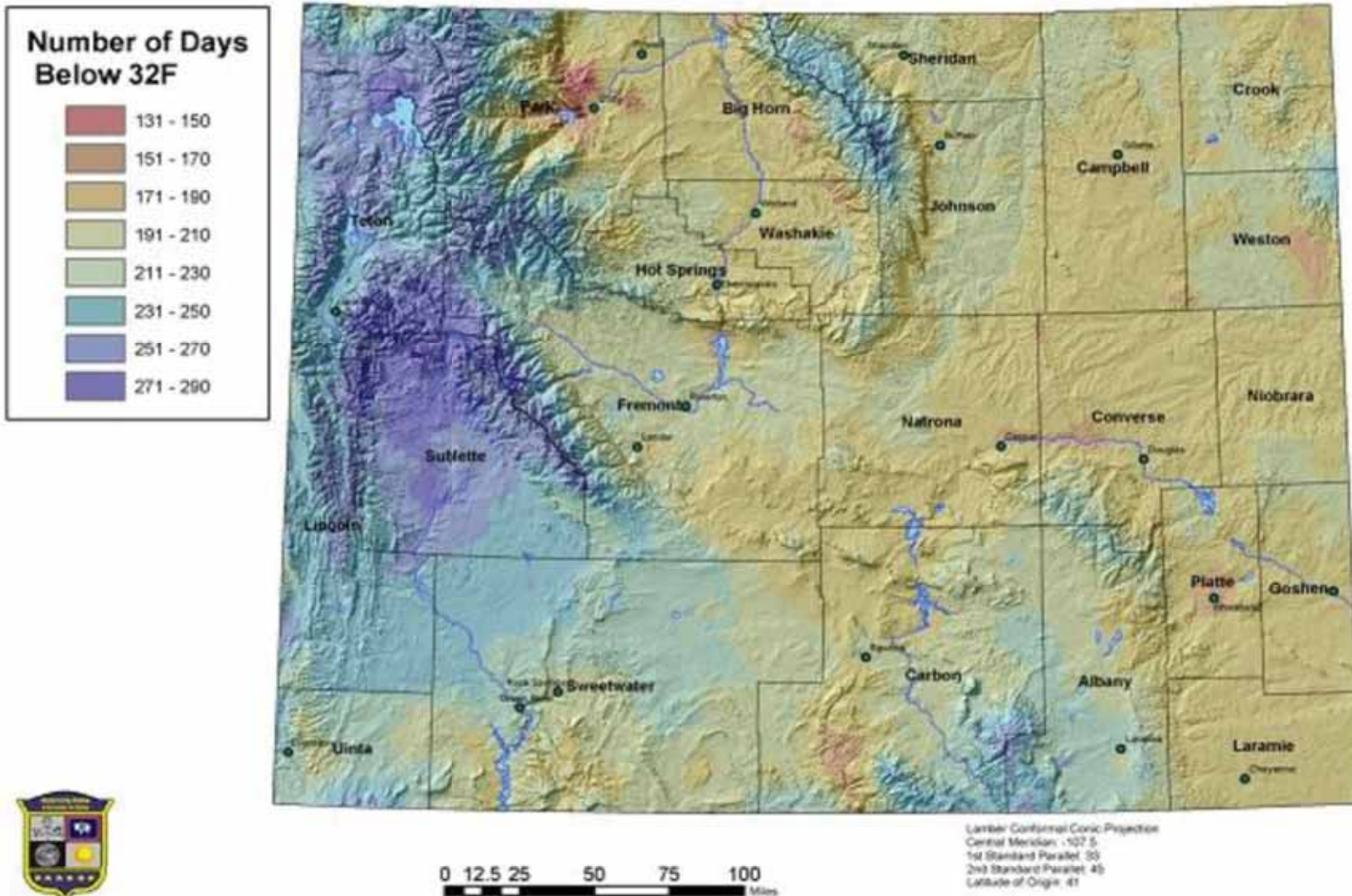
Brian Sebade
Agriculture and Horticulture
Extension Educator
Laramie, WY
307-721-2571
bsebade@uwyo.edu

LETS TALK ABOUT TEMPERATURE



Wyoming

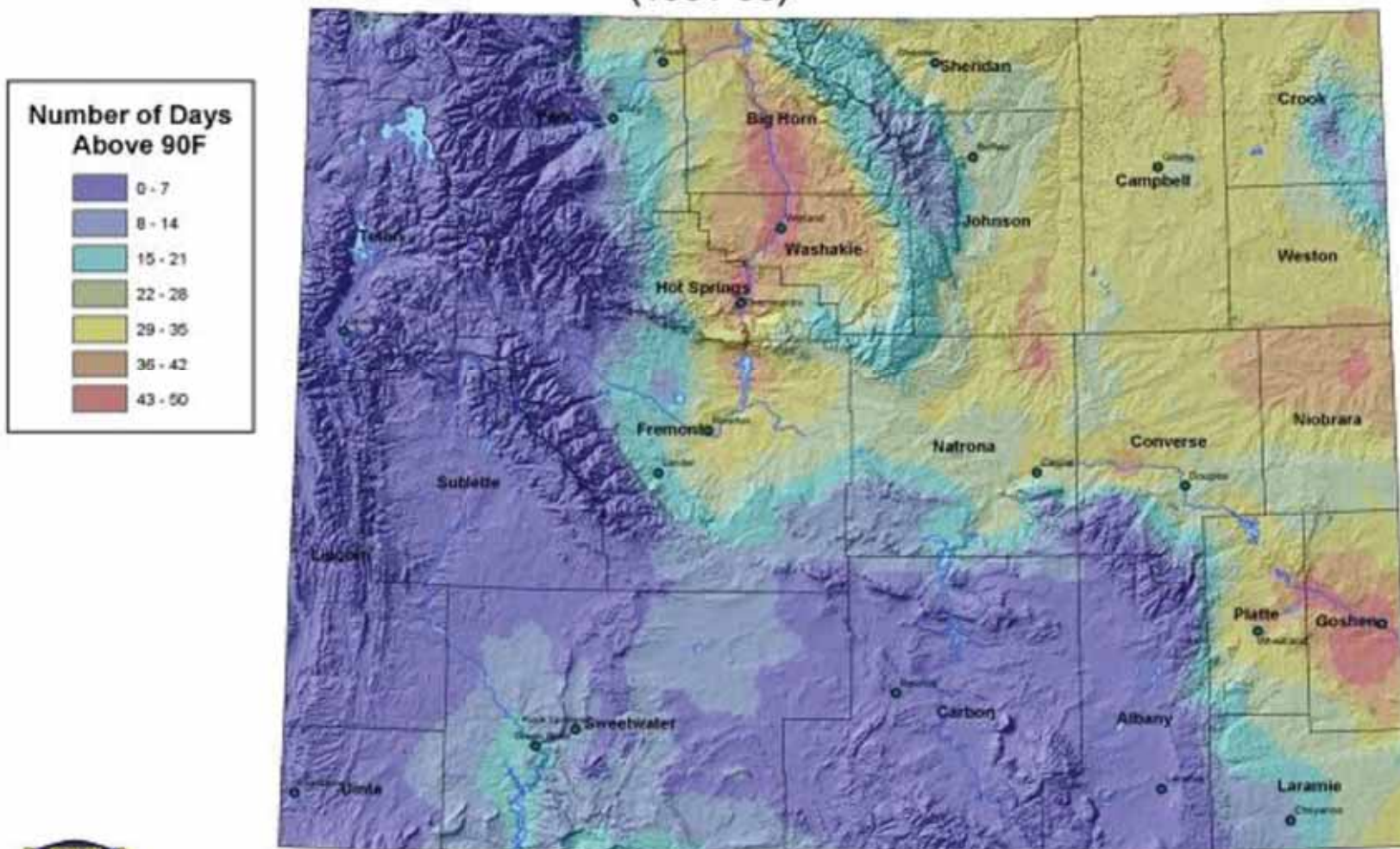
Annual Days with a Minimum Temperature at 32F and Below (1961-90)



Wyoming State Climate Office
<http://www.wyo.edu/wscs/wscs.html>

Data Source: Copyright © 2000-2003 The Climate Source, Inc. All Rights Reserved

Wyoming Annual Days with a Maximum Temperature Above 90F (1961-90)



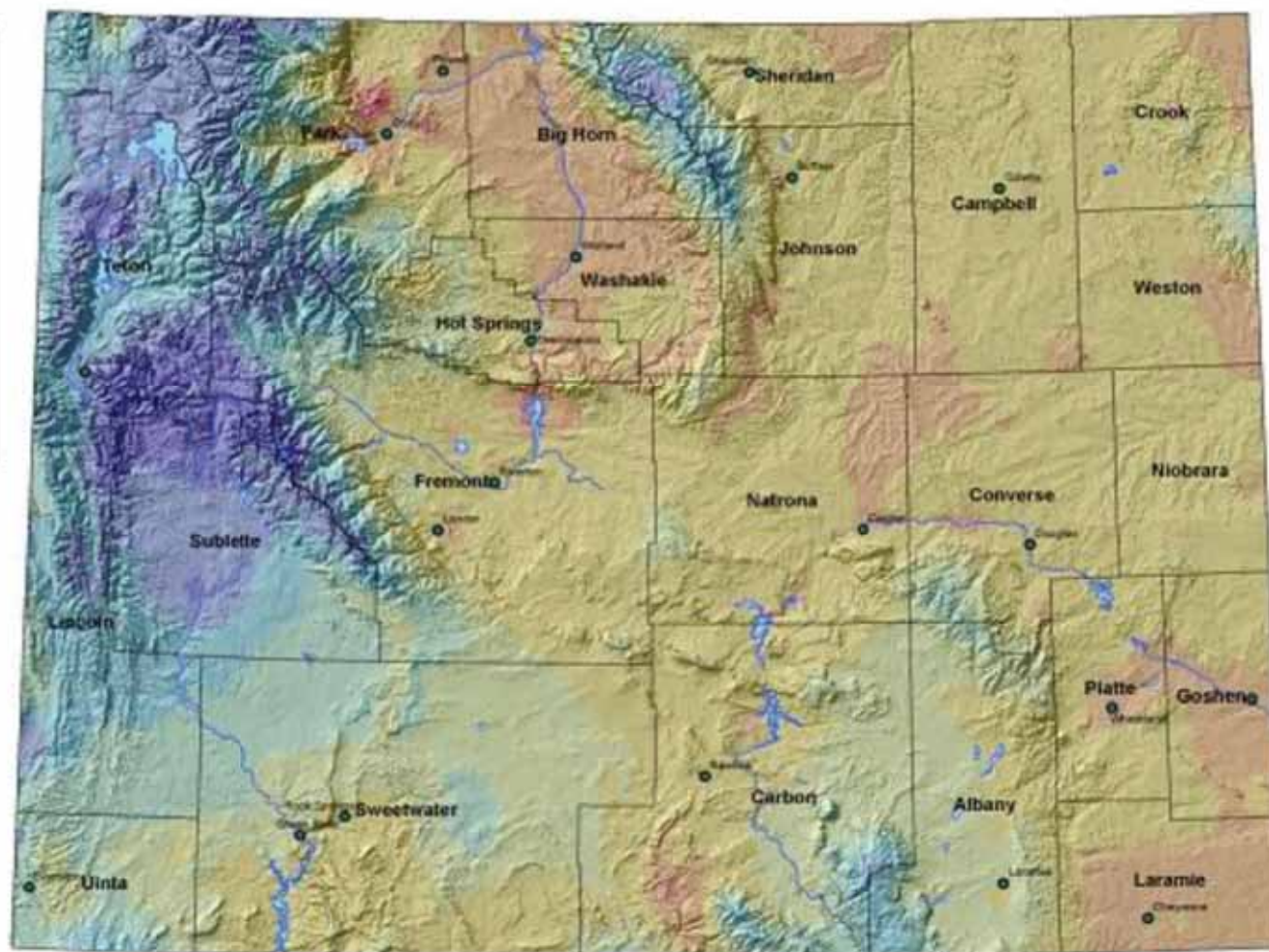
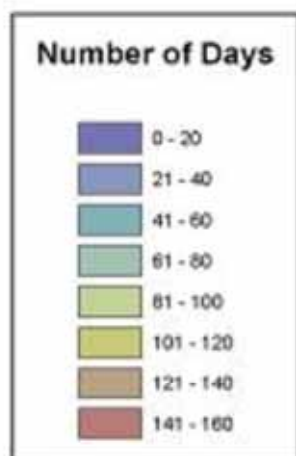
Wyoming State Climate Office
<http://www.wyo.gov/education/wyoschools.htm>

0 12.5 25 50 75 100 Miles

Lambert Conformal Conic Projection
 Central Meridian: -107.5
 1st Standard Parallel: 33
 2nd Standard Parallel: 45
 Latitude of Origin: 41

Data Source: Copyright © 2000-2003 The Climate Source, Inc. All Rights Reserved

Wyoming Average Number of Frost Free Days (Annual 1961-90)



Wyoming State Climate Office
<http://www.wyo.edu/wscs/wscs.html>

0 12.5 25 50 75 100 Miles

Lambert Conformal Conic Projection
 Central Meridian: -107.5
 1st Standard Parallel: 33
 2nd Standard Parallel: 45
 Latitude of Origin: 41

Data Source: Copyright © 2000-2003 The Climate Source, Inc. All Rights Reserved

- Planting a garden takes some thinking ahead
 - Direct seeding
 - Transplanting
 - Days to maturity



SPRING FREEZE HAZARD TABLE

This table shows the probability of the temperature dropping below 32 degrees or 28 degrees later in the spring than indicated.

Station	Below 32 Degrees			Below 28 Degrees		
	90%	50%	10%	90%	50%	10%
Afton	Jun 16	Jul 02	Jul 19	May 16	Jun 07	Jun 28
Albin	May 01	May 13	May 26	Apr 21	May 04	May 16
Alta 1NNW	Jun 04	Jun 25	Jul 15	May 04	May 28	Jun 21
Archer	May 08	May 26	Jun 12	Apr 27	May 08	May 19
Basin	Apr 25	May 13	May 31	Apr 18	May 01	May 14
Big Piney	Jun 15	Jul 06	Jul 27	May 23	Jun 15	Jul 08
Bondurant 3NW	Jul 20	Jul 27	Aug 02	Jun 30	Jul 14	Jul 28
Boysen Dam	Apr 22	May 08	May 24	Apr 05	Apr 24	May 13
Buffalo Bill Dam	Apr 19	May 12	Jun 04	Mar 28	Apr 23	May 20
Carpenter 3E	May 02	May 18	Jun 03	Apr 27	May 07	May 18
Casper AP	May 05	May 22	Jun 08	Apr 21	May 05	May 18
Cheyenne AP	Apr 27	May 12	May 26	Apr 18	May 01	May 14
Chugwater	May 11	May 28	Jun 15	Apr 26	May 11	May 26
Clearmont	May 06	May 31	Jun 24	May 01	May 13	May 26
Cody	May 01	May 17	Jun 01	Apr 17	May 02	May 17
Colony	Apr 27	May 11	May 25	Apr 15	Apr 30	May 15
Deaver	May 03	May 19	Jun 04	Apr 20	May 05	May 20
Dillinger	May 05	May 28	Jun 20	Apr 28	May 12	May 26
Diversion Dam	May 11	May 27	Jun 12	Apr 27	May 10	May 23
Dubois	Jun 04	Jun 24	Jul 14	May 09	Jun 01	Jun 24
Dull Center 1SE	Apr 28	May 21	Jun 13	Apr 24	May 04	May 15
Elk Mountain	May 19	Jun 04	Jun 20	May 01	May 18	Jun 05
Emblem	Apr 26	May 11	May 25	Apr 16	Apr 29	May 12
Evanston 1E	May 25	Jun 18	Jul 11	May 10	May 30	Jun 19
Farson 5N	Jun 06	Jun 25	Jul 14	May 19	June 05	Jun 22
Gillette 6SE	May 05	May 18	May 30	Apr 19	May 03	May 16
Glenrock 5ESE	Apr 27	May 11	May 26	Apr 17	Apr 29	May 12
Green River	May 16	Jun 04	Jun 23	May 05	May 24	Jun 11
Heart Mountain	May 05	May 21	Jun 07	Apr 24	May 09	May 23
Hulett	May 05	May 27	Jun 18	Apr 19	May 06	May 24
Jackson	Jun 24	Jul 10	Jul 26	May 27	Jun 19	Jul 11
Jeffrey City	May 20	Jun 06	Jun 23	May 06	May 23	Jun 08
Kaycee	May 02	May 21	Jun 09	Apr 25	May 07	May 18
Kemmerer 2N	Jun 05	Jun 24	Jul 13	May 11	Jun 05	Jul 01
Lagrange	May 03	May 21	Jun 07	Apr 24	May 06	May 18
Lander AP	Apr 30	May 19	Jun 06	Apr 21	May 04	May 17
Laramie FAA Airport	May 20	Jun 07	Jun 25	May 04	May 21	Jun 08

Courtesy: USDA NASS, Wyoming Ag Statistics Annual Bulletin 2013

FALL FREEZE HAZARD TABLE

This table shows the probability of the temperature dropping below 32 degrees or 28 degrees earlier in the fall than indicated.

Station	Below 32 Degrees			Below 28 Degrees		
	10%	50%	90%	10%	50%	90%
Afton	Aug 07	Aug 26	Sep 13	Aug 22	Sep 08	Sep 25
Albin	Sep 13	Sep 24	Oct 05	Sep 19	Oct 04	Oct 18
Alta INNW	Aug 16	Sep 05	Sep 25	Sep 01	Sep 16	Oct 02
Archer	Sep 12	Sep 21	Sep 30	Sep 16	Sep 28	Oct 10
Basin	Sep 09	Sep 20	Oct 02	Sep 18	Oct 02	Oct 16
Big Piney	Aug 02	Aug 14	Aug 26	Aug 09	Aug 28	Sep 16
Bondurant	Jul 29	Aug 05	Aug 12	Jul 30	Aug 11	Aug 25
Boysen Dam	Sep 19	Oct 05	Oct 20	Sep 28	Oct 16	Nov 02
Buffalo Bill Dam	Sep 18	Oct 05	Oct 22	Sep 24	Oct 13	Oct 31
Carpenter 3E	Sep 13	Sep 24	Oct 06	Sep 19	Oct 01	Oct 12
Casper AP	Sep 10	Sep 19	Sep 29	Sep 15	Sep 28	Oct 12
Cheyenne AP	Sep 14	Sep 26	Oct 08	Sep 19	Oct 06	Oct 22
Chugwater	Sep 05	Sep 18	Sep 30	Sep 12	Sep 24	Oct 05
Clearmont	Aug 27	Sep 12	Sep 27	Sep 10	Sep 21	Oct 03
Cody	Sep 10	Sep 21	Oct 03	Sep 17	Oct 02	Oct 17
Colony	Sep 15	Sep 28	Oct 11	Sep 21	Oct 09	Oct 27
Deaver	Sep 06	Sep 18	Sep 29	Sep 10	Sep 26	Oct 12
Dillinger	Sep 05	Sep 16	Sep 27	Sep 10	Sep 25	Oct 09
Diversion Dam	Sep 05	Sep 17	Sep 29	Sep 13	Sep 26	Oct 09
Dubois	Aug 11	Aug 30	Sep 17	Aug 27	Sep 12	Sep 27
Dull Center 1SE	Sep 08	Sep 20	Oct 01	Sep 16	Sep 29	Oct 11
Elk Mountain	Sep 03	Sep 13	Sep 23	Sep 11	Sep 22	Oct 03
Emblem	Sep 10	Sep 20	Oct 01	Sep 19	Oct 03	Oct 17
Evanston 1E	Aug 16	Sep 05	Sep 24	Sep 01	Sep 16	Oct 01
Farson 5N	Aug 10	Aug 28	Sep 15	Aug 22	Sep 06	Sep 20
Gillette 6SE	Sep 12	Sep 22	Oct 03	Sep 15	Oct 02	Oct 18
Glenrock SESE	Sep 09	Sep 20	Oct 01	Sep 17	Oct 01	Oct 15
Green River	Aug 15	Sep 04	Sep 25	Sep 06	Sep 18	Sep 29
Heart Mountain	Sep 04	Sep 16	Sep 29	Sep 11	Sep 25	Oct 10
Hulett	Sep 07	Sep 18	Sep 28	Sep 11	Sep 28	Oct 15
Jackson	Jul 31	Aug 16	Sep 01	Aug 14	Aug 30	Sep 16
Jeffrey City	Sep 01	Sep 12	Sep 23	Sep 08	Sep 19	Sep 30
Kaycee	Sep 08	Sep 18	Sep 29	Sep 14	Sep 29	Oct 14
Kemmerer 2N	Aug 11	Aug 30	Sep 18	Aug 25	Sep 11	Sep 28
Lagrange	Sep 09	Sep 20	Oct 01	Sep 15	Sep 28	Oct 11
Lander AP	Sep 13	Sep 24	Oct 05	Sep 18	Oct 03	Oct 18
Laramie Airport	Sep 01	Sep 14	Sep 27	Sep 07	Sep 19	Oct 01

SEEDS

Seed Depth	Days to Germination	Plant Spacing	Days to Maturity
1/2"	10-14	8-10"	50-60



- Cool Season Crops
 - Prefer air temperatures between 65-80°F
 - Some mature plants can often withstand short temperature exposures in the upper 20's
 - Start growing when soil temperatures are between 40-45°F
- Warm Season Crops
 - Prefer air temperatures between 70-85°F and soil temperatures between 60-65°F
 - Mature plants often do not recover from frost events
 - Optimum air temperature 80-90°F



STRUCTURES

- There are endless designs and possibilities out there
- Select a design that is going to work the best for you
- The structures pictured have design plans located on Barnyards and Backyards
- Plastic material potentially is the biggest decision due to price and longevity



COMING
ENSION





















20 Days Later







