

Remote Desktop Farm

Get access
anywhere!

Home
Library
Casper

...



Go to uwyo.edu/ceas



RISE TO NATIONAL PROMINENCE

The Engineering Initiative

Now is the time to be part of the University of Wyoming College of Engineering and Applied Science. After a significant investment from Wyoming state government in 2012, the Tier-1 Engineering Initiative was created to elevate the college to new heights of excellence in education, research and service. The initiative focuses on the following strategic goals:

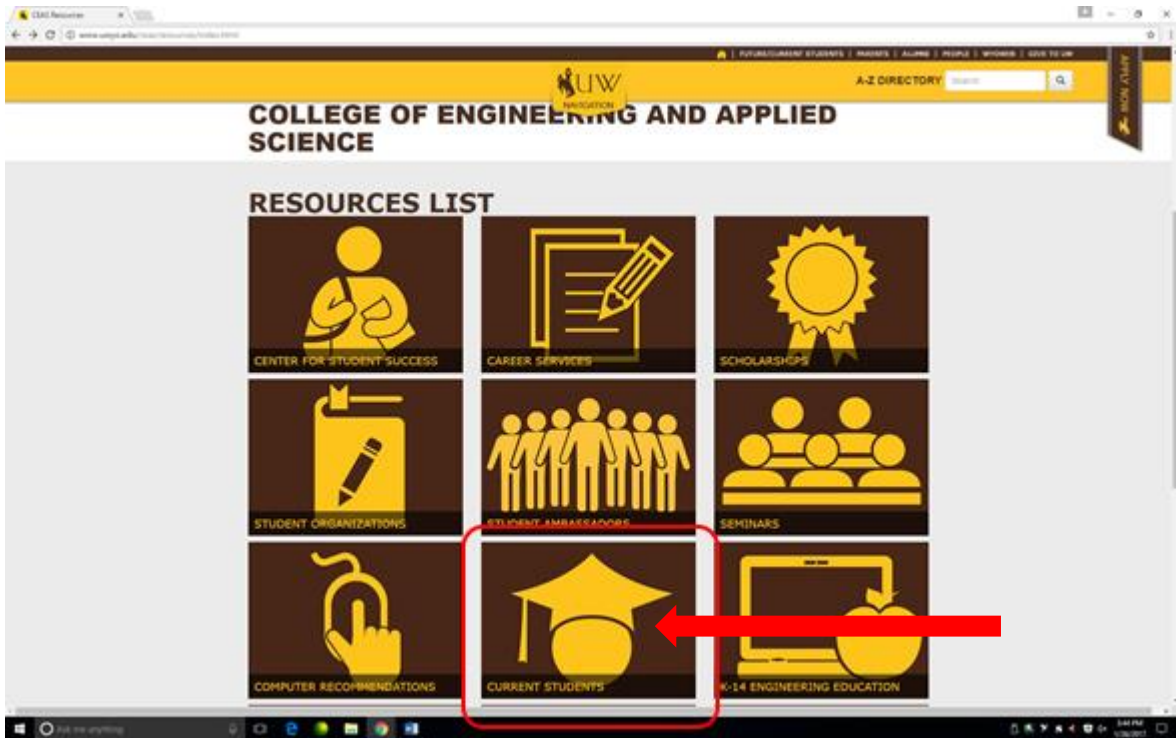
- Excellence in Undergraduate Education
- World-Class Research and Graduate Education
- Productive Economic Development
- K-14 STEM Education

Find out more [here](#).



Scroll down midway, and select
“Resources”

Select Current Students



Select Remote Desktops

CEAS HOME HOME

MENU

- THE ENGINEERING INITIATIVE
- ACADEMICS
- RESOURCES
 - CENTER FOR STUDENT SUCCESS
 - CAREER SERVICES
 - CEAS SCHOLARSHIPS
 - SEMINARS
 - STUDENT ORGANIZATIONS
 - COMPUTER RECOMMENDATIONS
- CURRENT STUDENTS

COLLEGE OF ENGINEERING AND APPLIED SCIENCE

What do you need to succeed?

Now that you're a UW student, get all the information you need to excel. The links below will keep you on the right track.

Explore our resources

The Essentials

- [WyoWeb](#)
- [Remote Desktops](#)
- [ESIG Help Files](#)
- [Webbed Classes](#)
- [Computer Resources](#)
- [University Remote Lab](#)
- [WyoCast Remote Learning](#)

Life at UW

- [4yr Undergraduate Degree](#)
- [Class Schedule](#)
- [Need Tutoring?](#)
- [FE Exam](#)
- [Engineering Fund For Enrichment](#)
- [Student Societies](#)
- [Seminar Announcements](#)

The Road Ahead

- [Center for Advising and Career Services, Knight Hall](#)
- [CEAS Career Services, Internships/Jobs](#)
- [Commencement Information](#)

COLLEGE OF ENGINEERING AND APPLIED SCIENCE

REMOTE DESKTOP LAB

Engineering Remote Lab

Note: Currently the log on for the University machines and ESIG labs can take up to 4 minutes. This problem is being worked on. After log on the system responds reasonably.

Students: Select [Student Connection to Remote Lab System](#)

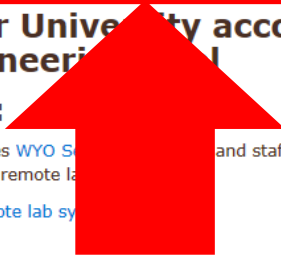
**Login with your University account
Select the Engineering Remote Lab**

Faculty and Staff:

This new remote system requires WYO S... and staff access. After you have the access setup then you will be able to use the remote lab system.

[Faculty/Staff connection to remote lab system](#)

Select the Engineering Pool



- MENU
- THE ENGINEERING INITIATIVE
- ACADEMICS
- RESOURCES
 - CENTER FOR STUDENT SUCCESS
 - CAREER SERVICES
 - CEAS SCHOLARSHIPS
 - SEMINARS
 - STUDENT ORGANIZATIONS
 - COMPUTER RECOMMENDATIONS
 - CURRENT STUDENTS
 - TUTORING



Welcome to the
University of Wyoming Student VPN Portal

Username
Password

Please sign in to begin your secure session.

Sign In

Welcome to the University of Wyoming Secure Portal, uwyo\breinick.

Web Bookmarks

- [Wyosecure Help Documentation](#)

Files

- [Classfiles](#)
- [Student Storage](#)

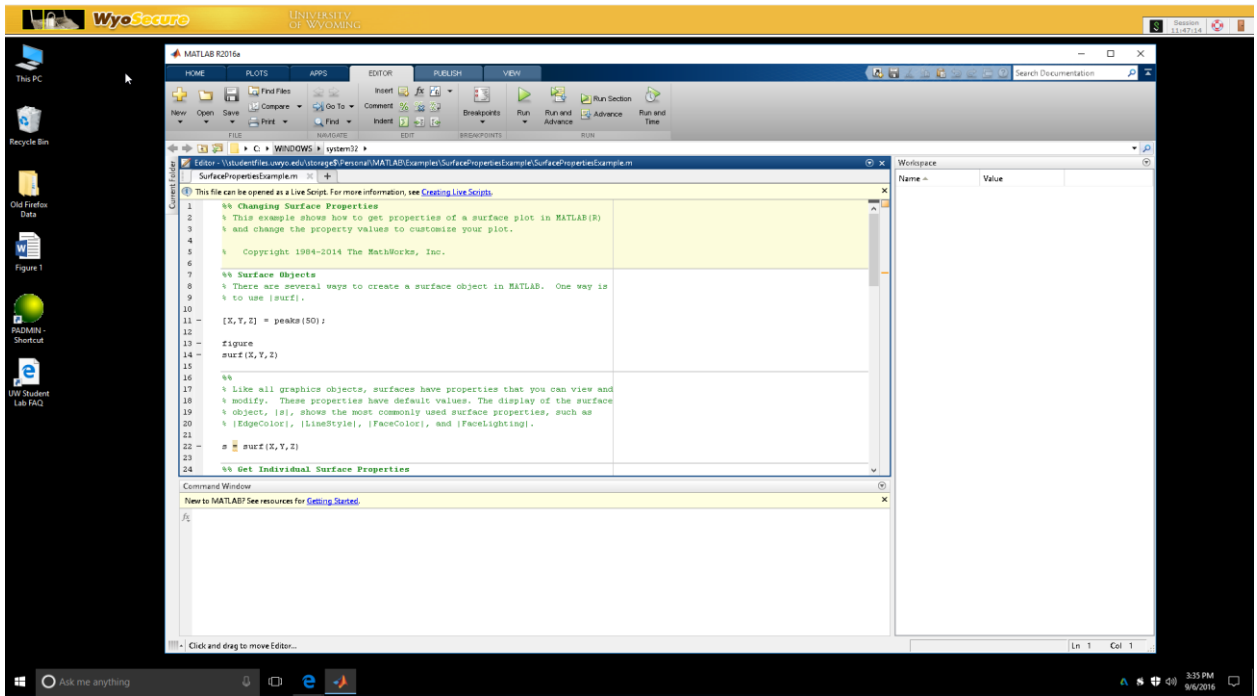
Client Application Sessions

- [Pulse Secure](#) [Start]

HTML5 Access Sessions

- [UWStudent Remote lab Pool A](#)
- [UWStudent Remote lab Pool B](#)
- [UWStudent Remote lab Pool Engineering](#)
- [Remote Linux Lab RDP](#)
- [Remote Linux Lab SSH](#)

The log on process may take up to three minutes



The key to making this remote log on work effectively is to have all your files on the University systems.

If you need to work on a local file, move it up to you University storage.

How to access your student storage remotely

Welcome to the University of Wyoming Secure Portal, uwyo\breinick.

Web Bookmarks

- Wyosecure Help Documentation

Files

- Classfiles
- Student Storage**

Client Application Sessions

- Pulse Secure Start

Copyright © 2001-2016 Pulse Secure, LLC. All rights reserved.

Windows Files > **Student Storage**

Delete... Download... **Upload Files...** New Folder...

Name	Type	Modified
<input type="checkbox"/> .gimp-2.8	Folder	Mon Nov 16 12:31:16 2015
<input type="checkbox"/> .idl	Folder	Mon Nov 30 17:09:48 2015
<input type="checkbox"/> .maplesoft	Folder	Thu Oct 15 15:56:27 2015
<input type="checkbox"/> Application Data	Folder	Tue Aug 30 13:27:20 2016
<input type="checkbox"/> bluei	Folder	Tue Oct 21 16:54:04 2014
<input type="checkbox"/> cars-buses-trucks-	Folder	Fri Nov 13 12:53:53 2015
<input type="checkbox"/> Desktop	Folder	Tue Sep 6 14:20:13 2016
<input type="checkbox"/> IDLWorkspace84	Folder	Mon Nov 30 17:20:54 2015
<input type="checkbox"/> New folder	Folder	Fri Nov 6 11:57:58 2015
<input type="checkbox"/> p2	Folder	Tue Aug 30 12:32:33 2016
<input type="checkbox"/> Personal	Folder	Tue Sep 6 14:20:14 2016



Windows Files >

Upload Files...

Use the Browse buttons below to select the files, then click Upload. You can opt to upload a zipped file and have it uncompressed in the target directory . Note that you cannot upload files larger than 500 MB.

Files to Upload

Upload to: \Student Storage

Files:

1.
Save As: Uncompress .zip
2.
Save As: Uncompress .zip
3.
Save As: Uncompress .zip
4.
Save As: Uncompress .zip
5.
Save As: Uncompress .zip

Upload Files?

For more information visit:

Wyo Secure VPN

<https://uwo.teamdynamix.com/TDClient/KB/?CategoryID=2054>