

# Remote Desktop Farm

Get access  
anywhere!

Home  
Library  
Casper  
...



Go to [uwyo.edu/ceas](http://uwyo.edu/ceas)

Scroll down midway, and select

“Student Resources”  
under Important Links

## IMPORTANT LINKS

THE ENGINEERING INITIATIVE

ACADEMICS

**STUDENT RESOURCES**

DEAN'S OFFICE

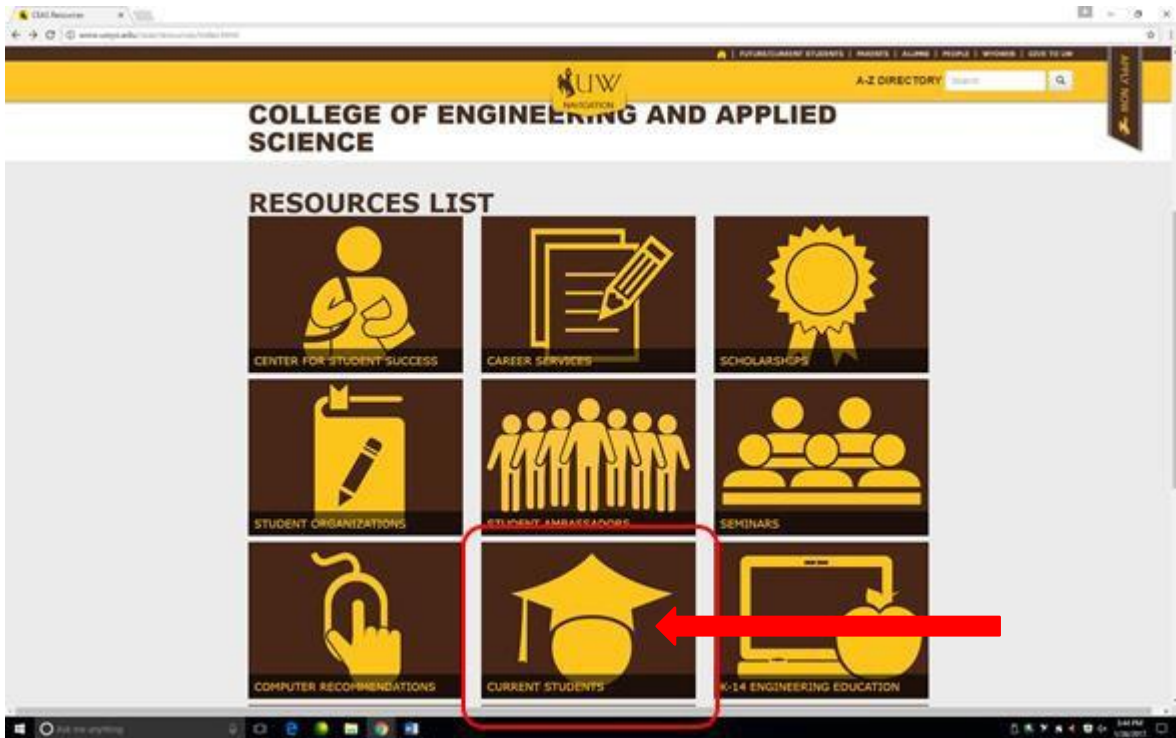
ALUMNI & FRIENDS

GIVE TO UW

NEWS



# Select Current Students



# Select Remote Desktops

CEAS HOME HOME

MENU

- THE ENGINEERING INITIATIVE
- ACADEMICS
- RESOURCES
  - CENTER FOR STUDENT SUCCESS
  - CAREER SERVICES
  - CEAS SCHOLARSHIPS
  - SEMINARS
  - STUDENT ORGANIZATIONS
  - COMPUTER RECOMMENDATIONS
  - CURRENT STUDENTS

## COLLEGE OF ENGINEERING AND APPLIED SCIENCE

### What do you need to succeed?

Now that you're a UW student, get all the information you need to excel. The links below will keep you on the right track.

### Explore our resources

#### The Essentials

- WyoWeb
- Remote Desktops
- ESIG Help Files
- Webbed Classes
- Computer Resources
- University Remote Lab
- WyoCast Remote Learning

#### Life at UW

- 4yr Undergraduate Degree
- Class Schedule
- Need Tutoring?
- FE Exam
- Engineering Fund For Enrichment
- Student Societies
- Seminar Announcements

#### The Road Ahead

- Center for Advising and Career Services, Knight Hall
- CEAS Career Services, Internships/Jobs
- Commencement Information

MENU

THE ENGINEERING INITIATIVE

ACADEMICS

RESOURCES

CENTER FOR STUDENT SUCCESS

SEMINARS

STUDENT ORGANIZATIONS

COMPUTER RECOMMENDATIONS

CURRENT STUDENTS

TECHNOLOGY POLICY

ENGINEERING REMOTE LAB

TUTORING

COMPUTER RESOURCES

# COLLEGE OF ENGINEERING AND APPLIED SCIENCE

## Engineering Remote Lab

Note: Initial log on will take time. After your connection is made, the system responds reasonably

### Students:

Select [Student Connection to Remote Lab System](#)

Login with your University account

Select the Engineering Pool



### Faculty and Staff:

This new remote system requires [WYO Secure](#) for faculty and staff access. After you have the access setup then you will be able to use the remote lab.

[Faculty/Staff connection to remote lab system](#)

Select the Engineering Pool

### Notes:

New [Help File](#) for the Remote Lab System

**Adobe Creative Suite** products have been removed from all remote lab nodes because of licensing changes implemented by the vendor.



## Welcome to the University of Wyoming Student VPN Portal

Username

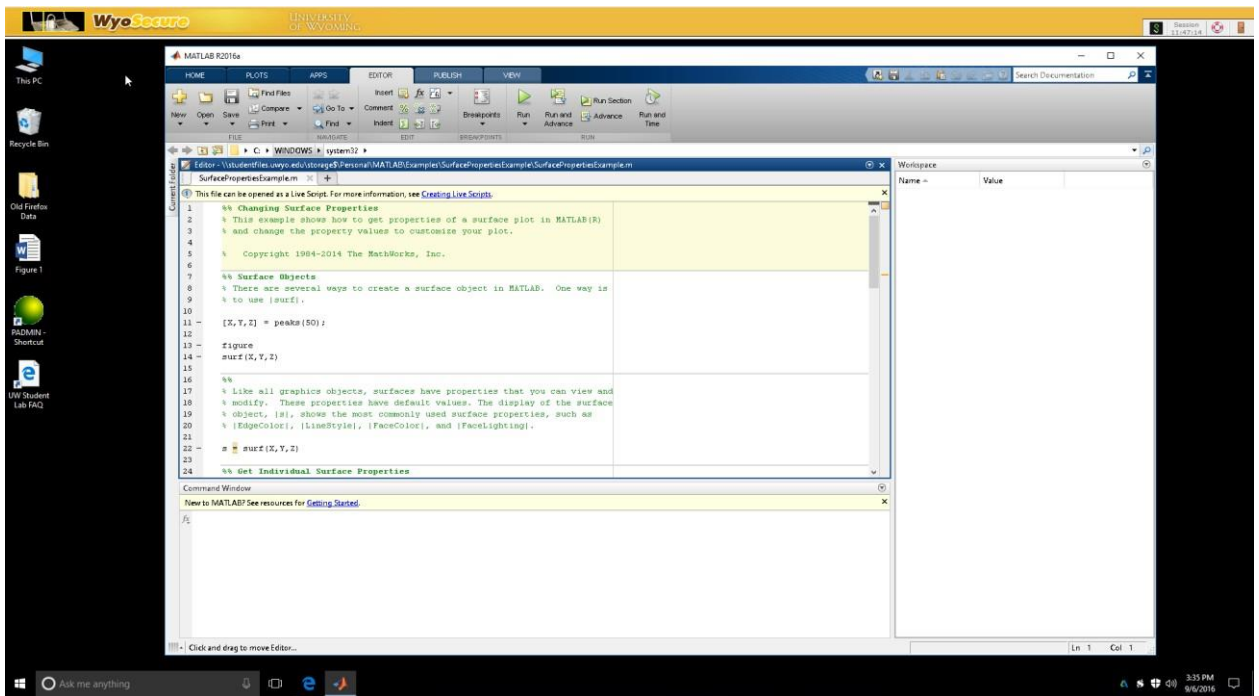
Please sign in to begin your secure session.

Password

Sign In

The screenshot shows the 'Welcome to the University of Wyoming Secure Portal, uwyo\breinick.' interface. On the left, there are three main sections: 'Web Bookmarks' with a link to 'Wyosecure Help Documentation'; 'Files' with links to 'Classfiles' and 'Student Storage'; and 'Client Application Sessions' with a 'Pulse Secure' icon and a 'Start' button. On the right, a 'HTML5 Access Sessions' dropdown menu is open, listing several options: 'UWStudent Remote lab Pool A', 'UWStudent Remote lab Pool B', 'UWStudent Remote lab Pool Engineering' (circled in red), 'Remote Linux Lab RDP', and 'Remote Linux Lab SSH'.

# The log on process may take up to three minutes



The key to making this remote log on work effectively is to have all your files on the University systems.

If you need to work on a local file, move it up to your University storage.

# How to access your student storage remotely

Welcome to the University of Wyoming Secure Portal, uwyo\breinick.

Web Bookmarks

- [Wyosecure Help Documentation](#)

Files

- [Classfiles](#)
- [Student Storage](#)**

Client Application Sessions

- [Pulse Secure](#) Start

Copyright © 2001-2016 Pulse Secure, LLC. All rights reserved.

Windows Files > **Student Storage\**

Delete... Download... **Upload Files...** New Folder...

Name	Type	Modified
<input type="checkbox"/> .gimp-2.8	Folder	Mon Nov 16 12:31:16 2015
<input type="checkbox"/> .idl	Folder	Mon Nov 30 17:09:48 2015
<input type="checkbox"/> .maplesoft	Folder	Thu Oct 15 15:56:27 2015
<input type="checkbox"/> Application Data	Folder	Tue Aug 30 13:27:20 2016
<input type="checkbox"/> bluei	Folder	Tue Oct 21 16:54:04 2014
<input type="checkbox"/> cars-buses-trucks-	Folder	Fri Nov 13 12:53:53 2015
<input type="checkbox"/> Desktop	Folder	Tue Sep 6 14:20:13 2016
<input type="checkbox"/> IDLWorkspace84	Folder	Mon Nov 30 17:20:54 2015
<input type="checkbox"/> New folder	Folder	Fri Nov 6 11:57:58 2015
<input type="checkbox"/> p2	Folder	Tue Aug 30 12:32:33 2016
<input type="checkbox"/> Personal	Folder	Tue Sep 6 14:20:14 2016



Windows Files >

## Upload Files...

Use the Browse buttons below to select the files, then click Upload. You can opt to upload a zipped file and have it uncompressed in the target directory. **Note that you cannot upload files larger than 500 MB.**

**Files to Upload**

**Upload to:** \Student Storage

**Files:**

1.    
Save As:   Uncompress .zip
2.    
Save As:   Uncompress .zip
3.    
Save As:   Uncompress .zip
4.    
Save As:   Uncompress .zip
5.    
Save As:   Uncompress .zip

**Upload Files?**

For more information visit:

Wyo Secure VPN

<https://uwyo.teamdynamix.com/TDClient/KB/?CategoryID=2054>