



Parameters

The parameters utility allows program defaults to be changed. Some parameters are locked and require the daily password. Please call the Communications and Technology office before attempting to change a parameter with a locked password. The following example uses the 100 MB zip drive parameter to demonstrate how to change an unlocked parameter. Unlocked parameters can be changed without the daily password.

1. Click **Go to > Utilities/Password Entry > Parameters**.
2. Select the **parameter** to be changed. See Figure 1. The parameter's settings display.

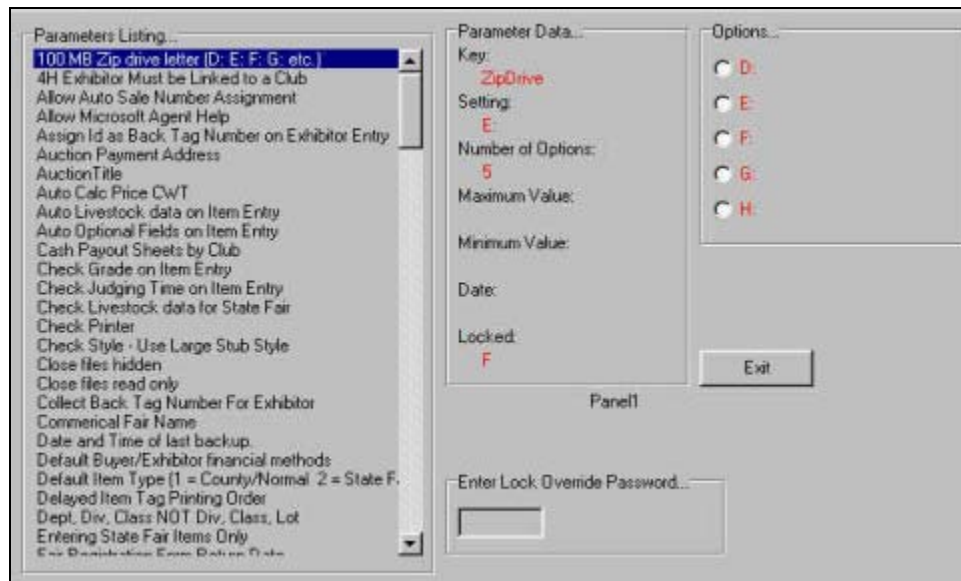


Figure 1. Parameters Listing

3. Select the **new setting** in the *Options* box.
4. Click **Exit**.