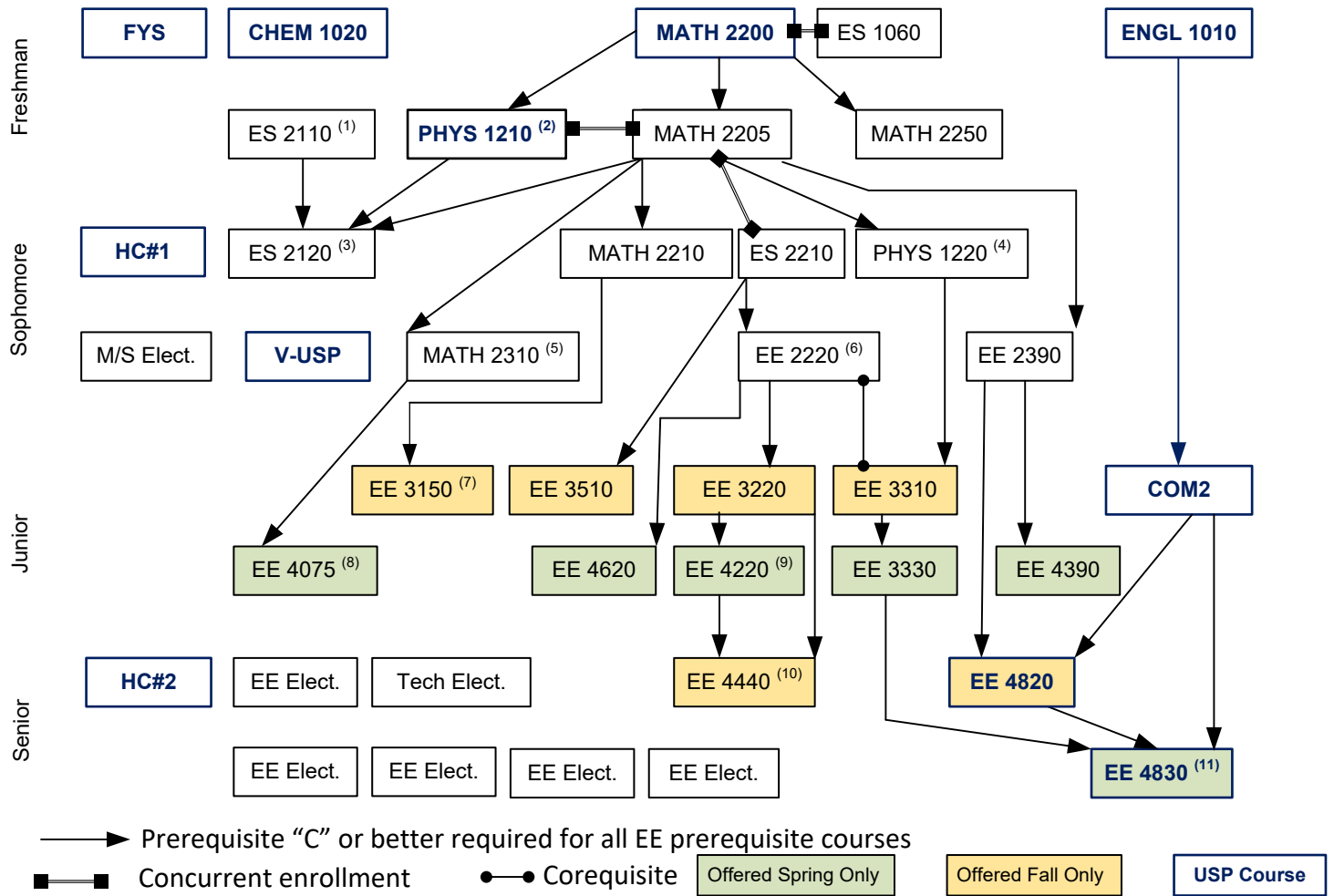


Electrical Engineering Flow Chart (2017-2018)



- (1) ES 2110 Prerequisites: MATH 2205 or concurrent enrollment. Can be substituted with any ES, EE, BE course (≥ 2000 level), or COSC 3011 or COSC 3750.
- (2) PHYS 1210: No credit can be earned in PHYS 1210 if taken after ES 2120.
- (3) ES 2120 can be substituted with any ES, EE, BE course (≥ 2000 level), or COSC 3011 or COSC 3750.
- (4) PHYS 1220 Prerequisites: grades of C or higher in MATH 2200 and 2205, and concurrent enrollment in MATH 2210. PHYS 1220 should be taken before or concurrently with ES 2210.
- (5) MATH 2310 Prerequisites: grade of C or better in MATH 2205 and MATH 2210
- (6) EE 2220 is a co-requisite for EE 3310 and prerequisite for EE 3330
- (7) EE 3150 Prerequisites: ES 2210, MATH 2210, and PHYS 1220.
- (8) EE 4075 Prerequisites: MATH 2205 and (COSC 1010 or ES 1060) and (MATH 2250 or MATH 2310) or consent of instructor.
- (9) EE 4220 Prerequisites: EE 3220 and MATH 2210
- (10) EE 4440 Prerequisites: EE 3220 and EE 4220
- (11) COM3 to satisfy this requirement with EE 4820/4830 the COM2 course must be taken before EE 4820 and EE 4820 and EE 4830 must be taken in sequence.

Students must have a minimum cumulative GPA of 2.0 in all Engineering courses for graduation. A grade of C (2.0) or higher is required for all prerequisite courses.

Students must complete a minimum of 42 hours of upper division coursework, 30 hours of which must be from the University of Wyoming.

Math/Science Elective: One course from the ECE Math/Science Elective List. ABET requires a minimum of 32 hours of a combination of college level mathematics and basic sciences (some with experimental experience) appropriate to the discipline. Basic sciences are defined as biological, chemical, and physical sciences.

EE Electives: A minimum of 19 hours of EE electives and Technical electives is required. A minimum of 16 credit hours of non-required EE courses offered by the ECE Department. Suggestions are as follows:

- Electronics: EE 4250, 4300, 4330, 4340, 4360, 4380, 4560, BE 4810, BE 4820
- Communication/Signal Processing: EE 4245, 4300, 4345, 4530, 4870
- Systems & Controls: EE 5210, 5400
- Power Engineering: EE 4510, 4540, 4550, 4560
- Digital/Computer: EE 4360, 4490, 4590, 4870, 4970, 4990

Technical Elective: Any course marked as technical electives in the ECE Math/Science Elective List.