



Check it Out

Spring Semester 2014

A newsletter for patrons of University Libraries

Wyoming's access to resources from the world's largest biomedical library

By Jim Honour,
Wyoming/Member Services Coordinator, National Network of Libraries of Medicine

You could say that the world's largest biomedical library is found in Wyoming, and is also a library within University of Wyoming Libraries. The U.S. National Library of Medicine (NLM) is located in Bethesda, Maryland, on the campus of the National Institutes of Health, but its resources are available worldwide.

The NLM library started in 1836 as the Library of the Office of the Surgeon General of the Army in Washington, DC and consisted of a meager collection of medical books on one shelf. One hundred seventy-eight years later the NLM now holds more than 17 million items in 150 languages and is one of the 27 institutes at the National Institutes of Health. The NLM partners with many of the institutes and other federal

continued on page 4



Jonna Cubin, a UW and WWAMI alumna working as an ER doctor in Casper, 2012.

The U.S. National Library of Medicine resources are available to physicians 24/7 online.



UNIVERSITY OF WYOMING

UNIVERSITY LIBRARIES



A Message from the Dean

We have had quite a fall semester and the turnover in administration could have

been a distraction but we have way too much work to sidetrack our focus from teaching students and assisting with research. Since the Board of Trustees meet in W.R. Coe Library, we were curious to see how interest in the UW Trustee meeting and press conference would increase foot traffic on November 14. A typical Thursday is about 3,800 and the same Thursday one year ago was just under 4,000. The gate count for that Trustee meeting was 4,162. The increase was somewhere in the 4-9% range. What is amazing is the number of individuals who daily use our main library. In this day of “everything is online”, Coe Library demonstrates that students require a variety of spaces for their research and that as a place, we are meeting the expectations of our students and faculty.

It is our goal to continually meet this expectation and thanks to President Tom Buchanan and Dr. Darryl and Mrs. Helga Bindschadler, we are installing new collaborative study areas to facilitate group work. UW Libraries Development Board is also setting aside funds so that we can increase these spaces. While these areas are not private rooms, students collaborate on projects and need spaces with large monitors and workspaces. Kaijsa Calkins has reported on this project and continues to work to improve the technology so that individuals using the equipment do not require any knowledge of technology.

We would like faculty to consider using these areas for informal teaching such as meeting with small student groups and office hours. We want to determine how we can create informal teaching spaces and spontaneous research conversations - such areas might be attractive for faculty. Contact Kaijsa Calkins if you have any ideas or would like to know more about the collaborative areas (kcalkins@uwyo.edu).

Students feel strong ownership of Coe Library and this has been our goal as we want to provide a variety of spaces to facilitate their work in addition to housing collections. We are pleased to announce that ASUW is providing funding for additional iPads to circulate and the Student IT Fee Committee is providing equipment for our group study rooms that lack technology. In addition, the Student IT Fee Committee would like to assist us with installing additional computers and a computer charging station. We are always seeking to improve the building but to have student funding and assistance is significant in assisting us in meeting our goals. Thank you to our fabulous students.

Your ideas and comments regarding our spaces are encouraged. While our facilities are primarily provided for students, we want to ensure that faculty and staff have spaces that assist them with their work. Coe Library is a teaching and research center and will strive to meet the expectations of our teaching mission. Please contact me regarding your concepts. I hope that you have a productive spring semester.

Maggie Farrell
Dean of Libraries



Learn &
Explore &
Grow.


Meet@CoeLibrary

Friends &
Art &
Books.

Together@CoeLibrary

Coe Library demonstrates that students require a variety of spaces for their research and that as a place, we are meeting the expectations of our students and faculty.

~ Maggie Farrell



Collaborate &
Study &
Succeed.

GroupStudyRooms@CoeLibrary

Click &
Browse &
Research.

Compute@CoeLibrary



Try &
Fail &
Learn.

Experiment@CoeLibrary

Wyoming's access to resources from the world's largest biomedical library

continued from page 1

organizations that aim to support the nation's health. The NLM's information and research services support clinical research, health care delivery, education, public health and consumers interested in having an active role in making their personal health decisions.

The vast array of the NLM's resources are free and available online 24/7, and are reliable, authoritative, unbiased and trustworthy. The NLM's research databases are valuable for clinicians and scientists, its consumer health resources are ideal for the public and it also has K-12 resources for students, parents and teachers.

UW Librarian Jim Honour coordinates Wyoming outreach for the National Library of Medicine and has an office in William Robertson Coe Library. He is available to personally answer your questions about the NLM and its resources. Most people aren't aware of the NLM's presence in Wyoming and are always amazed with the volume, richness and quality of free biomedical and health information available here at our fingertips!

You can visit the NLM's website at <http://nlm.nih.gov> to investigate their resources. You may also access 18 of their resources via mobile apps and sites online at <http://www.nlm.nih.gov/mobile/index.html>.

Jim Honour

UW Libraries
Wyoming/Member Services Coordinator
National Network of Libraries of Medicine
Mid-Continental Region

(800) 338-7657 (Option 1-2-8)

(307) 766-6537

jhonour@uwyo.edu

www-lib.uwyo.edu

<http://nmlm.gov.mcr>



University of Wyoming Libraries

about an hour ago 😊

Connect with us on Facebook.

www.facebook.com/Coelibrary

To view our posts in your news feed, under  Liked choose "Get Notifications" and "Add to Interest Lists."

NLM's Notable Resources: For Research:

PubMed

<http://www.ncbi.nlm.nih.gov/pubmed>

PubMed contains more than 23 million citations from biomedical literature, including several languages, with many links to free full text articles. One may find citations and abstracts in the fields of medicine, nursing, dentistry, veterinary medicine, health care systems, and preclinical sciences. The My NCBI feature allows the user to log-in and have the ability to save searches, records, and also receive automatic e-mail updates of searches. PubMed has links to its free collection of e-books on the NCBI Bookshelf at <http://www.ncbi.nlm.nih.gov/books/>. Users can easily learn how to optimize their search with the PubMed Quick Start Guide and many other tutorials. Conduct a simple keyword search in the search window or try the controlled vocabulary, for a focused search via MeSH.



PubMed Health

<http://www.ncbi.nlm.nih.gov/pubmedhealth>

PubMed Health concentrates on the treatment and prevention of diseases and conditions. Both clinicians and consumers can find useful information in this resource. The content primarily has reviews of clinical effectiveness research and provides summaries to help answer the question “What works?” The resource has an A to Z list for consumers and a Clinical Guide for health professionals to browse. PubMed Health relies on systematic reviews and clinical trials for evidence and all searches in PubMed Health run simultaneously in PubMed. This is worth a look.

TOXNET (Toxicology Data Network)

<http://toxnet.nlm.nih.gov>

TOXNET is a group of databases covering hazardous chemicals, drugs, diseases and the environment, toxicology and more and is included in the Environmental Health and Toxicology Portal at <http://sis.nlm.nih.gov/enviro.html>. Public health workers, scientists, researchers, and clinicians find this resource useful.



ClinicalTrials.gov

<http://clinicaltrials.gov>

A registry of publicly and privately supported clinical studies that currently lists 157,052 studies with locations in all 50 states and in 185 countries. It provides patients, their family members, health care professionals, researchers, and the public with easy access to information on publicly and privately supported clinical studies on a wide range of diseases and conditions. Searches can be done by conditions, sponsors, location, age group, study types, study results and recruitment.

continued on page 6

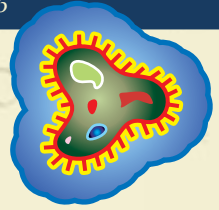
NLM's Notable Resources: For Consumer Health:

continued from page 6

MedlinePlus (M+)

<http://medlineplus.gov>

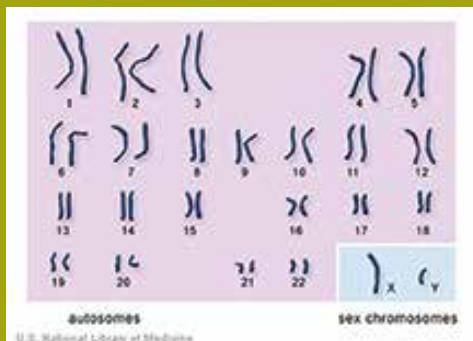
M+ is NLM's premier consumer health resource. This is what could be referred to as a databank since it has both content provided by the NLM and links to health information from dozens of health organizations. You can find information by using the search window or clicking through the web pages. M+ has information on more than 900 health topics, drugs/supplements, with videos, games, tutorials, patient education literature, a medical dictionary, medical encyclopedia, an "easy to read" setting, a setting to convert the text to Spanish and text available in more than 40 languages. It also groups common health topics by age and sex.



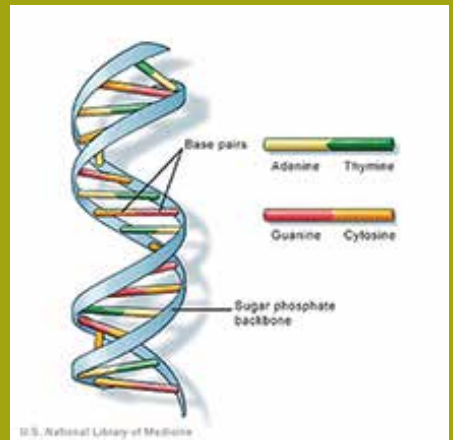
Genetics Home Reference (GHR)

<http://ghr.nlm.nih.gov>

GHR is the NLM's web site for information about genetic conditions and the related genes and chromosomes. Users may search by condition, genes or by specific chromosomes. Information on each condition includes a description, related genes, inheritance, and resources about diagnosis or management of the condition. GHR also has an excellent handbook on genetics and a glossary with commonly used words in the field. It contains many useful graphics.



Images from Genetics Home Reference database at <http://ghr.nlm.nih.gov>.



Household Products Database

<http://hpd.nlm.nih.gov>

The Household Products Database has information on more than 12,000 consumer brands and their health effects. Information includes chemical ingredients, acute and chronic effects, manufacturers of specific brands and their contact information. Users can use the "Quick Search" window or browse by category or with an alphabetical list by name, type, manufacturer and ingredient.

NLM's Notable Resources: K-12 Resources

ToxMystery

<http://toxmystery.nlm.nih.gov>



This is a fun interactive resource for elementary age children, their parents and teachers. The user is escorted by Toxie the Cat who helps them find and learn about hazardous chemicals around the house. The website provides three lesson plans for teachers with worksheets and activities. Toxie awards a printable personalized certificate upon successful completion of the interactive tour of the house. Content can be converted to Spanish.

Tox Town

<http://toxtown.nlm.nih.gov>

This is an interactive resource targeting children in grades 6-8. Users can learn about toxic substances found in everyday locations. Locations include neighborhoods in cities, towns, farms, U.S. border regions, ports and the U.S. southwest where there are potential environmental chemicals and hazards. The content may be converted to Spanish. Teachers will find Tox Town based curriculum units for the classroom, resources and enrichment activities.

K-12 Science and Health Education

<http://sis.nlm.nih.gov/outreach/k12.html>

K-12 Science and Health Education is a directory for teachers to resources that will supplement education programs. This is a great web page with links to resources in biology, general health, genetics, environmental health/chemistry and much more.



Images from NLM's online exhibition, *Forensic Views of the Body: Visible Proofs*.
LEFT to RIGHT: Bottle of Arsenic, Bottle of Laudanum, and the first medical treatise devoted solely to the subject of toxicology. www.nlm.nih.gov/visibleproofs

World Book Night

April 23, 2014

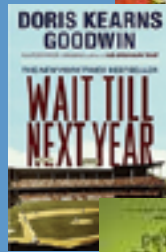
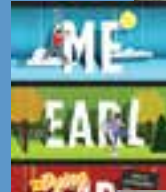
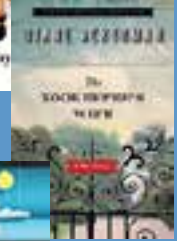
By Brenna K Philbrick
Chair, UW Libraries Employee Support Committee

World Book Night (WBN) is a free nation-wide giveaway event that strives to engender an interest in reading for the sake of reading. How does it work? Each year a panel of librarians and booksellers chooses a selection of books which represent works of fiction and non-fiction, prose and poetry, and young adult and adult materials in a variety of literary genres and languages. Once the titles have been selected, individuals and groups may apply to World Book Night to become book givers at a WBN event. (<http://www.us.worldbooknight.org/>).

2014 marks the first year that University of Wyoming Libraries will participate in World Book Night. Our goal is to reach out to members of the community, sixteen years and older, who consider themselves to be light or non readers in order to get them interested in reading for pleasure. We want these users to visit our libraries more often than just when they have to for work or school. And we're going to accomplish this by giving away wonderful, free books!

UW Libraries' World Book Night event will be hosted at Coe Library on April 23, 2014. Event details will be forthcoming on the libraries' social media pages and at libraries in the Laramie area. Please ask to speak with a member of the University Libraries' Employee Support Committee if you have any questions.

2014
*The Books



*A selection of the 2014 World Book Night giveaways. Actual books given away at Coe Library will vary and may not include those represented here. For more information visit www.us.worldbooknight.org/books/2014.



Research the world online through UW Libraries' databases



© University of British Columbia Library

Online database, *China, America and the Pacific*, explores the cultural and trading relationships that emerged between America, China and the Pacific region between the 18th and early 20th centuries. It includes manuscripts, rare printed sources, visual images, objects, and maps from international libraries and archives. The depth of the materials include:

- Ship's logs
- Rare newspapers and printed books
- Paintings, illustrations, photos
- Historic maps
- Ephemera, and more

To start, visit www-lib.uwoy.edu, click on *Articles*, and look for databases by title or subject.



© Nantucket Historical Association

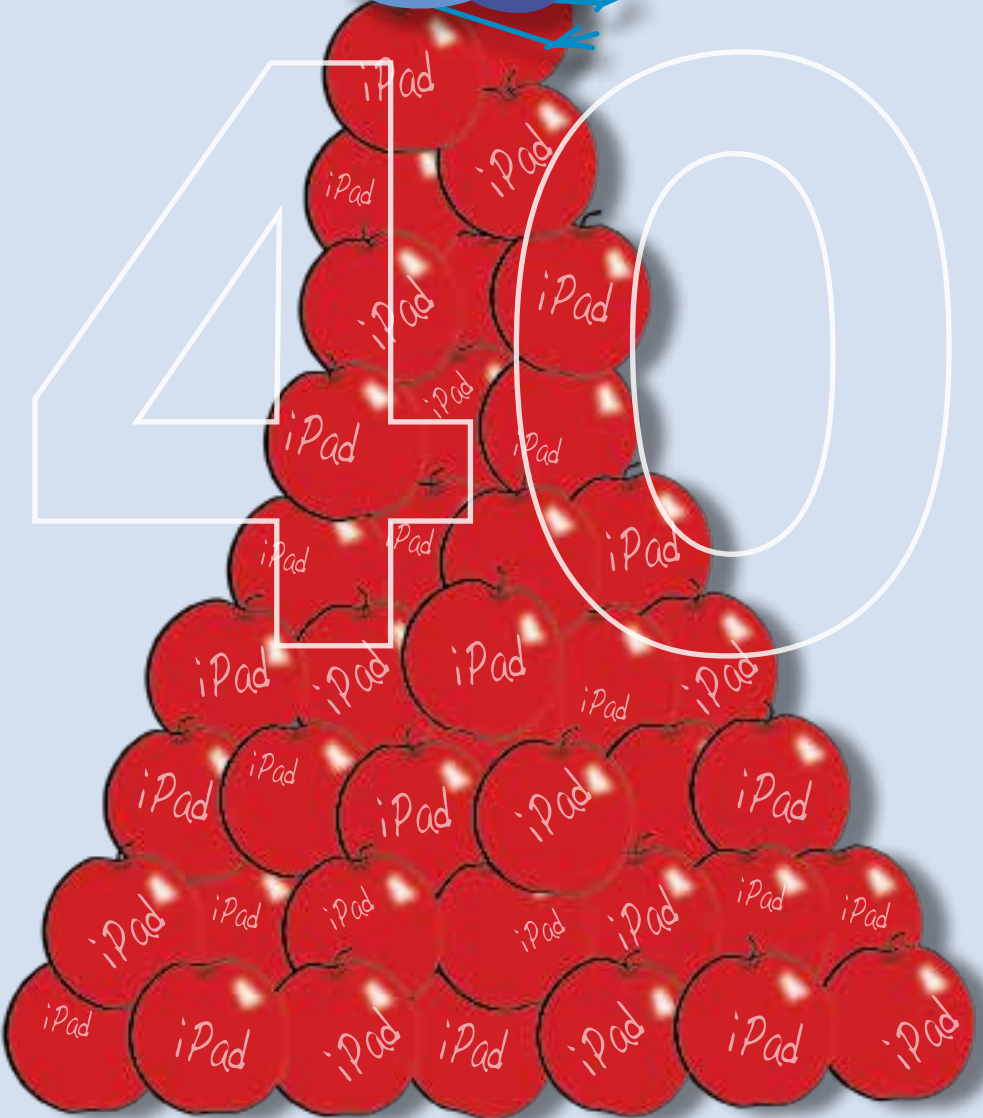
TOP: Photograph, "Cannery Gang" by Jue Frank, 1917.

ABOVE: Painting, "Barque Richard Parsons" by unidentified Chinese artist, 1889.

Reprinted with permission by Adam Matthew Digital 2013 ©



40



We have 40 Apple iPads available for loan at William Robertson Coe Library.



ABOVE: New iPad Airls stored in a charging station before checkout

ASUW partners with UW Libraries to purchase additional library iPads

ASUW awarded UW Libraries one-time-funds to purchase twenty iPad Airls, thus doubling the number of available iPads for checkout.

UW Libraries has been providing iPads for student checkout since 2011. The iPad checkout program began with a loaner pool of ten units, which was increased to twenty units in 2012. The loaner program was initiated based upon feedback from students gathered from focus groups and polling conducted by UW Libraries. We heard students wanted to learn about new technology such as eBooks, eBook readers, PDF annotation software, and mobile interfaces for academic use.

The libraries' iPads are equipped with WiFi and come preloaded with standard files and a wide range of applications for work and play. While users also may sync additional data and applications, all data is wiped and replaced with the standard preloaded files and apps when the iPad is returned to the library.

The loan period for iPads is seven days, which is generous by academic library standards and allows individuals to make good use of the equipment while still allowing for distributed access to the iPads. Units are available to UW faculty, staff and students for checkout at the Circulation Help Desk in W.R. Coe Library.



UNIVERSITY of WYOMING
University Libraries
Department 3334
1000 E. University Avenue
Laramie, Wyoming 82071



University of Wyoming
LIBRARIES
www-lib.uwyo.edu