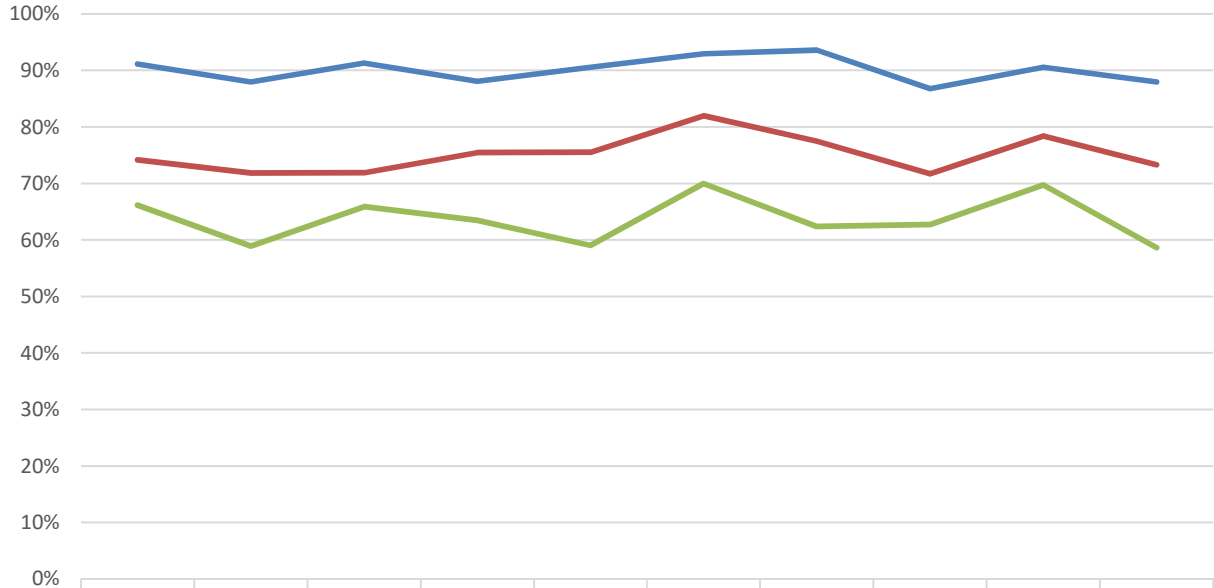


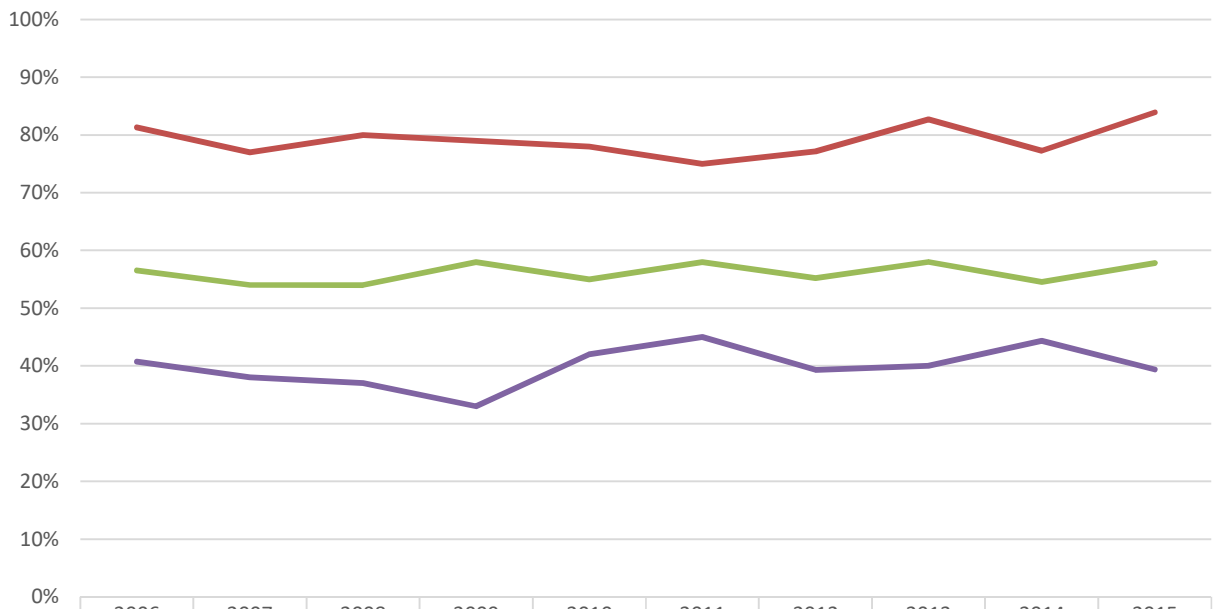
University of Wyoming First-Year, Full-time Students Hathaway Recipients

Fall-to-Fall Retention Rates of Students that Started
Fall 2011 - Fall 2020



	2011	2012	2013	2014	2015	2016	2017	2018	2019	2020
Honors	91%	88%	91%	88%	91%	93%	94%	87%	91%	88%
Performance	74%	72%	72%	75%	76%	82%	78%	72%	78%	73%
Opportunity	66%	59%	66%	63%	59%	70%	62%	63%	70%	59%

Six-Year Graduation Rates of Students that Started
Fall 2006 - Fall 2015



	2006	2007	2008	2009	2010	2011	2012	2013	2014	2015
Honors	81%	77%	80%	79%	78%	75%	77%	83%	77%	84%
Performance	57%	54%	54%	58%	55%	58%	55%	58%	55%	58%
Opportunity	41%	38%	37%	33%	42%	45%	39%	40%	44%	39%

**Hathaway Student Retention
Compared to Wyoming High School Graduates
First-Time, First-Year, Full-Time Students
Students Starting Fall 2011 through Fall 2020***

Students Starting in... Fall 2011	# of Students	% of Students	1st Year Cum GPA	Fall-to-Fall Retention
Honors	351	47%	3.26	91%
Performance	267	35%	2.57	74%
Opportunity	136	18%	2.17	66%
Total Hathaway Students	754		2.82	81%
<i>WY High School Graduates</i>	<i>812</i>		<i>2.76</i>	<i>77%</i>

Students Starting in... Fall 2012	# of Students	% of Students	1st Year Cum GPA	Fall-to-Fall Retention
Honors	341	47%	3.30	88%
Performance	270	37%	2.52	72%
Opportunity	112	15%	2.05	59%
Total Hathaway Students	723		2.82	77%
<i>WY High School Graduates</i>	<i>754</i>		<i>2.77</i>	<i>75%</i>

Students Starting in... Fall 2013	# of Students	% of Students	1st Year Cum GPA	Fall-to-Fall Retention
Honors	347	49%	3.38	91%
Performance	281	39%	2.55	72%
Opportunity	85	12%	2.41	66%
Total Hathaway Students	713		2.94	81%
<i>WY High School Graduates</i>	<i>755</i>		<i>2.90</i>	<i>78%</i>

Students Starting in... Fall 2014	# of Students	% of Students	1st Year Cum GPA	Fall-to-Fall Retention
Honors	369	48%	3.31	88%
Performance	277	36%	2.58	75%
Opportunity	115	15%	2.23	63%
Total Hathaway Students	761		2.90	80%
<i>WY High School Graduates</i>	<i>803</i>		<i>2.85</i>	<i>78%</i>

Students Starting in... Fall 2015	# of Students	% of Students	1st Year Cum GPA	Fall-to-Fall Retention
Honors	373	48%	3.35	91%
Performance	282	36%	2.66	76%
Opportunity	127	16%	2.17	59%
Total Hathaway Students	782		2.91	80%
<i>WY High School Graduates</i>	<i>831</i>		<i>2.89</i>	<i>78%</i>

Students Starting in... Fall 2016	# of Students	% of Students	1st Year Cum GPA	Fall-to-Fall Retention
Honors	323	45%	3.38	93%
Performance	281	39%	2.76	82%
Opportunity	115	16%	2.36	70%
Total Hathaway Students	719		2.97	85%
<i>WY High School Graduates</i>	<i>768</i>		<i>2.92</i>	<i>82%</i>

Students Starting in... Fall 2017	# of Students	% of Students	1st Year Cum GPA	Fall-to-Fall Retention
Honors	375	46%	3.38	94%
Performance	304	38%	2.76	78%
Opportunity	131	16%	2.23	63%
Total Hathaway Students	810		2.98	83%
<i>WY High School Graduates</i>	<i>857</i>		<i>2.93</i>	<i>81%</i>

Students Starting in... Fall 2018	# of Students	% of Students	1st Year Cum GPA	Fall-to-Fall Retention
Honors	386	49%	3.41	87%
Performance	297	38%	2.75	72%
Opportunity	102	13%	2.30	63%
Total Hathaway Students	785		3.03	78%
<i>WY High School Graduates</i>	<i>855</i>		<i>2.98</i>	<i>76%</i>

Students Starting in... Fall 2019	# of Students	% of Students	1st Year Cum GPA	Fall-to-Fall Retention
Honors	370	50%	3.47	91%
Performance	283	38%	2.89	78%
Opportunity	86	12%	2.58	70%
Total Hathaway Students	739		3.16	84%
<i>WY High School Graduates</i>	<i>788</i>		<i>3.09</i>	<i>82%</i>

Students Starting in... Fall 2020	# of Students	% of Students	1st Year Cum GPA	Fall-to-Fall Retention
Honors	442	48%	3.39	88%
Performance	341	37%	2.76	73%
Opportunity	133	15%	2.47	59%
Total Hathaway Students	916		3.04	78%
<i>WY High School Graduates</i>	<i>960</i>		<i>3.00</i>	<i>77%</i>

*Students starting in prior summer and continuing in fall are included.

18-Feb-2022

Note: GPAs calculated based on an average of GPA, not the calculation of hours and points.

OIA:SMK:CZ

**Hathaway Student Graduation
Compared to Wyoming High School Graduates
First-Time, First-Year, Full-Time Students
Starting Fall 2006 through Fall 2015***

Students Starting in... Fall 2006	# of Students	% of Students	1st Year Cumulative GPA	Fall-to-Fall Retention	Six-Year Grad Rate	Degree GPA
Honors	321	41%	3.31	93%	81%	3.48
Performance	306	39%	2.66	78%	57%	3.18
Opportunity	162	21%	2.21	64%	41%	2.99
Total Hathaway Students	789		2.83	81%	63%	3.26
<i>WY High School Graduates</i>	885		2.78	77%	59%	3.29

Students Starting in... Fall 2007	# of Students	% of Students	1st Year Cumulative GPA	Fall-to-Fall Retention	Six-Year Grad Rate	Degree GPA
Honors	342	43%	3.25	88%	77%	3.52
Performance	323	41%	2.51	74%	54%	3.14
Opportunity	125	16%	2.17	64%	38%	2.95
Total Hathaway Students	790		2.78	78%	61%	3.33
<i>WY High School Graduates</i>	836		2.74	76%	58%	3.32

Students Starting in... Fall 2008	# of Students	% of Students	1st Year Cumulative GPA	Fall-to-Fall Retention	Six-Year Grad Rate	Degree GPA
Honors	343	41%	3.28	88%	80%	3.54
Performance	334	40%	2.59	78%	54%	3.21
Opportunity	154	19%	2.13	60%	37%	3.03
Total Hathaway Students	831		2.79	79%	61%	3.37
<i>WY High School Graduates</i>	882		2.75	77%	59%	3.35

Students Starting in... Fall 2009	# of Students	% of Students	1st Year Cumulative GPA	Fall-to-Fall Retention	Six-Year Grad Rate	Degree GPA
Honors	319	41%	3.31	89%	79%	3.53
Performance	305	39%	2.62	77%	58%	3.25
Opportunity	154	20%	1.90	53%	33%	2.94
Total Hathaway Students	778		2.76	77%	62%	3.36
<i>WY High School Graduates</i>	829		2.73	74%	58%	3.35

Students Starting in... Fall 2010	# of Students	% of Students	1st Year Cumulative GPA	Fall-to-Fall Retention	Six-Year Grad Rate	Degree GPA
Honors	347	47%	3.26	88%	78%	3.50
Performance	265	36%	2.58	75%	55%	3.19
Opportunity	123	17%	2.07	56%	42%	3.06
Total Hathaway Students	735		2.82	78%	64%	3.35
<i>WY High School Graduates</i>	792		2.75	74%	59%	3.35

Students Starting in... Fall 2011	# of Students	% of Students	1st Year Cumulative GPA	Fall-to-Fall Retention	Six-Year Grad Rate	Degree GPA
Honors	351	47%	3.26	91%	75%	3.53
Performance	267	35%	2.57	74%	58%	3.20
Opportunity	136	18%	2.17	66%	45%	3.04
Total Hathaway Students	754		2.82	81%	64%	3.36
<i>WY High School Graduates</i>	812		2.76	77%	60%	3.35

Students Starting in... Fall 2012	# of Students	% of Students	1st Year Cumulative GPA	Fall-to-Fall Retention	Six-Year Grad Rate	Degree GPA
Honors	341	47%	3.30	88%	77%	3.54
Performance	270	37%	2.52	72%	55%	3.16
Opportunity	112	15%	2.05	59%	39%	3.00
Total Hathaway Students	723		2.82	77%	63%	3.37
<i>WY High School Graduates</i>	<i>754</i>		<i>2.77</i>	<i>75%</i>	<i>60%</i>	<i>3.36</i>

Students Starting in... Fall 2013	# of Students	% of Students	1st Year Cum GPA	Fall-to-Fall Retention	Six-Year Grad Rate	Degree GPA
Honors	347	49%	3.38	91%	83%	3.55
Performance	281	39%	2.55	72%	58%	3.21
Opportunity	85	12%	2.41	66%	40%	3.07
Total Hathaway Students	713		2.94	81%	68%	3.40
<i>WY High School Graduates</i>	<i>755</i>		<i>2.90</i>	<i>34%</i>	<i>65%</i>	<i>3.39</i>

Students Starting in... Fall 2014	# of Students	% of Students	1st Year Cum GPA	Fall-to-Fall Retention	Six-Year Grad Rate	Degree GPA
Honors	369	48%	3.31	88%	77%	3.52
Performance	277	36%	2.58	75%	55%	3.22
Opportunity	115	15%	2.23	63%	44%	3.09
Total Hathaway Students	761		2.90	80%	64%	3.39
<i>WY High School Graduates</i>	<i>803</i>		<i>2.85</i>	<i>78%</i>	<i>61%</i>	<i>3.37</i>

Students Starting in... Fall 2015	# of Students	% of Students	1st Year Cum GPA	Fall-to-Fall Retention	Six-Year Grad Rate	Degree GPA
Honors	373	48%	3.35	91%	84%	3.54
Performance	282	36%	2.66	76%	58%	3.23
Opportunity	127	16%	2.17	59%	39%	3.08
Total Hathaway Students	782		2.91	80%	67%	3.40
<i>WY High School Graduates</i>	<i>831</i>		<i>2.89</i>	<i>78%</i>	<i>64%</i>	<i>3.39</i>

Students Starting in... Fall 2016	# of Students	% of Students	1st Year Cum GPA	Fall-to-Fall Retention	Five-Year Grad Rate	Degree GPA
Honors	323	45%	3.38	93%	81%	3.57
Performance	281	39%	2.76	82%	57%	3.31
Opportunity	115	16%	2.36	70%	35%	3.20
Total Hathaway Students	719		2.97	85%	64%	3.45
<i>WY High School Graduates</i>	<i>768</i>		<i>2.92</i>	<i>82%</i>	<i>60%</i>	<i>3.44</i>

Students Starting in... Fall 2017	# of Students	% of Students	1st Year Cum GPA	Fall-to-Fall Retention	Four-Year Grad Rate	Degree GPA
Honors	375	46%	3.38	94%	65%	3.66
Performance	304	38%	2.76	78%	30%	3.43
Opportunity	131	16%	2.23	63%	17%	3.19
Total Hathaway Students	810		2.98	83%	44%	3.58
<i>WY High School Graduates</i>	<i>857</i>		<i>2.93</i>	<i>81%</i>	<i>41%</i>	<i>3.57</i>

*Students starting in prior summer and continuing in fall are included.

Note: GPAs calculated based on an average of GPA, not the calculation of hours and points.

17-Feb-2022

OIA:SMK:CZ