

# UW Student Satisfaction

Board of Trustees

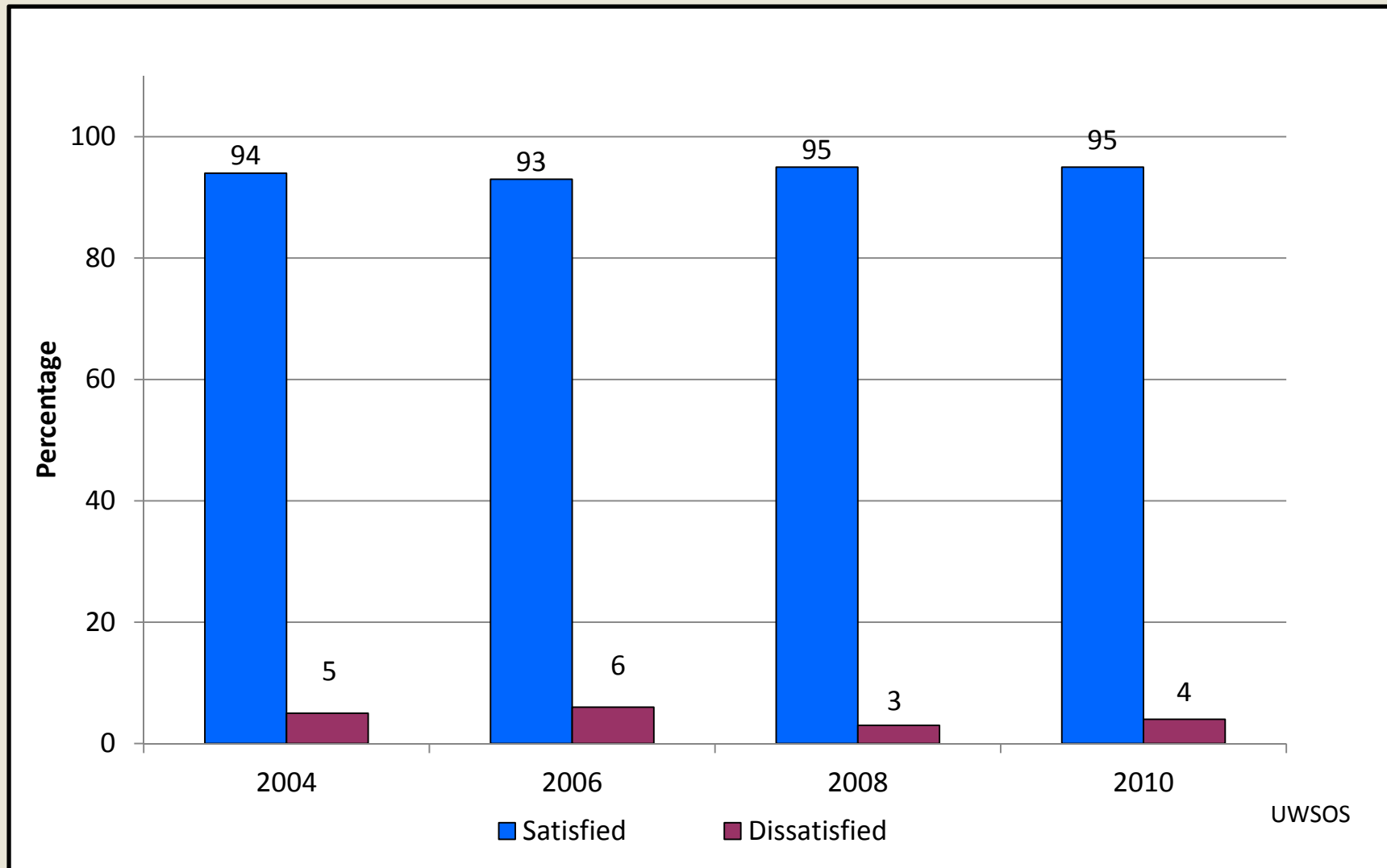
January 20, 2011

# University of Wyoming Student Satisfaction Survey

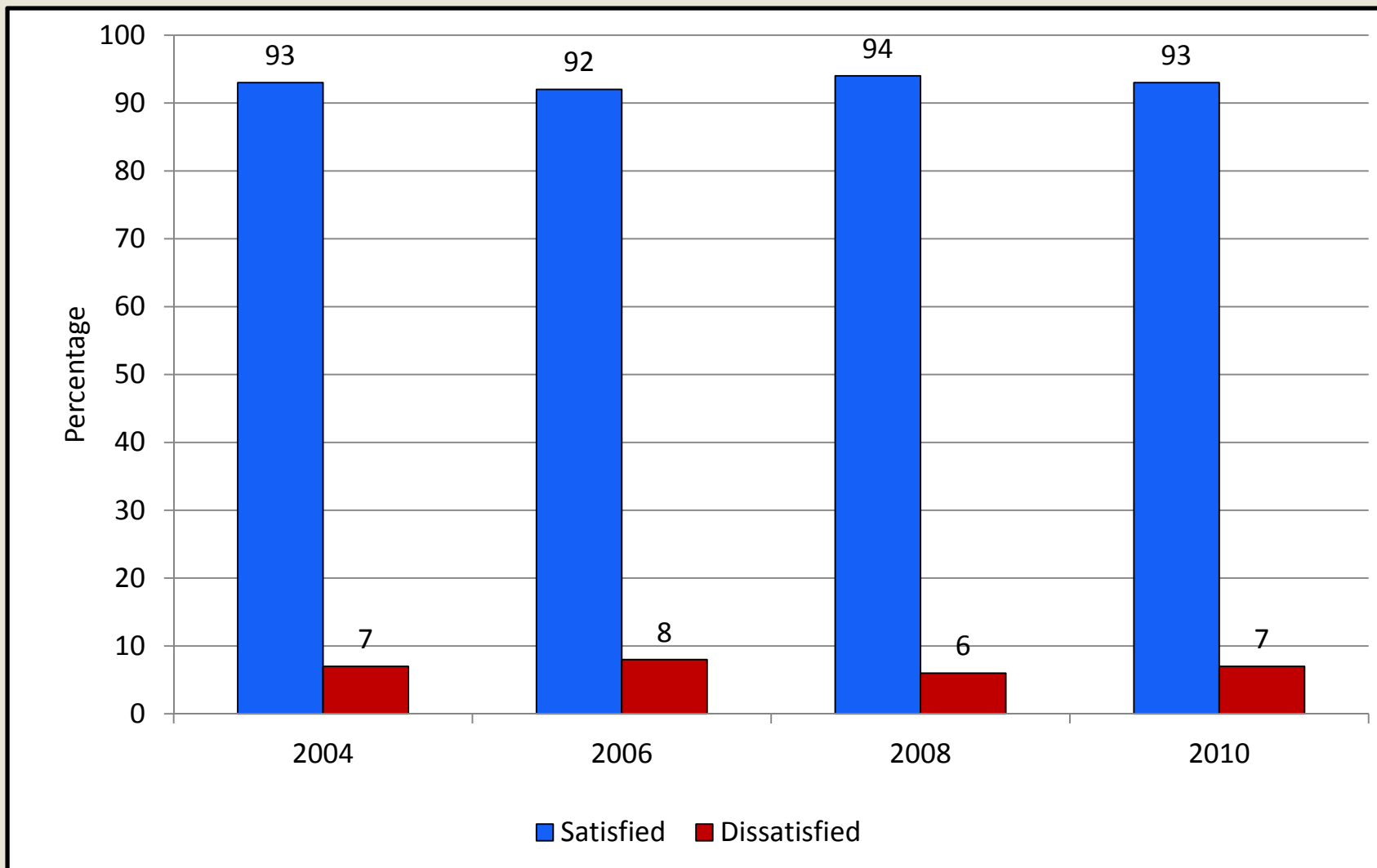
The University of Wyoming Student Satisfaction Surveys have been conducted every two years since 1994. The current survey was administered in March, 2010. A total of 1,500 students completed the surveys.

Complete results can be found on the College of Arts and Sciences web page at <http://www.uwyo.edu/as/UW-Student-Satisfaction-Report-1994-to-2010/index.html>

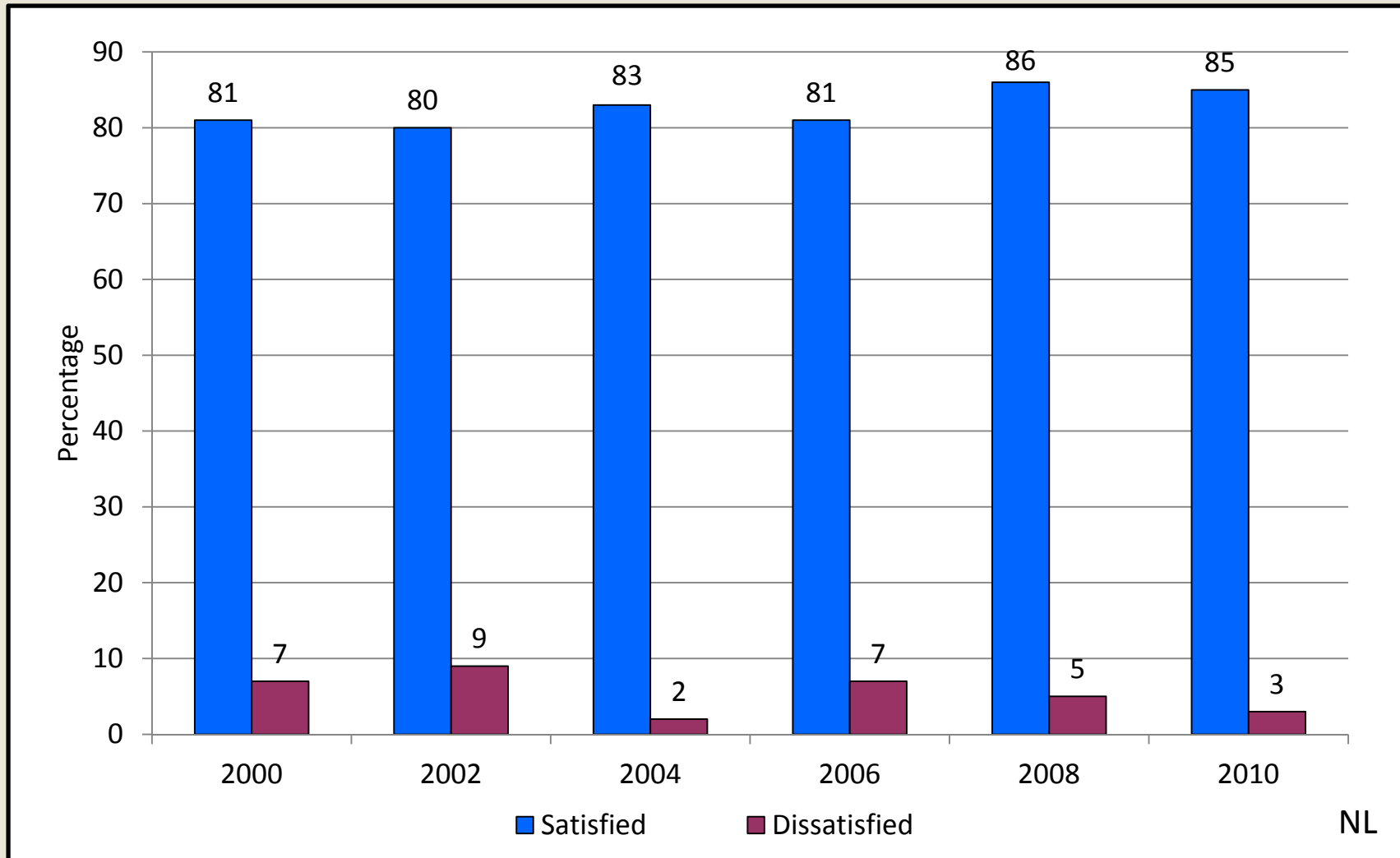
# Pleased with education at UW



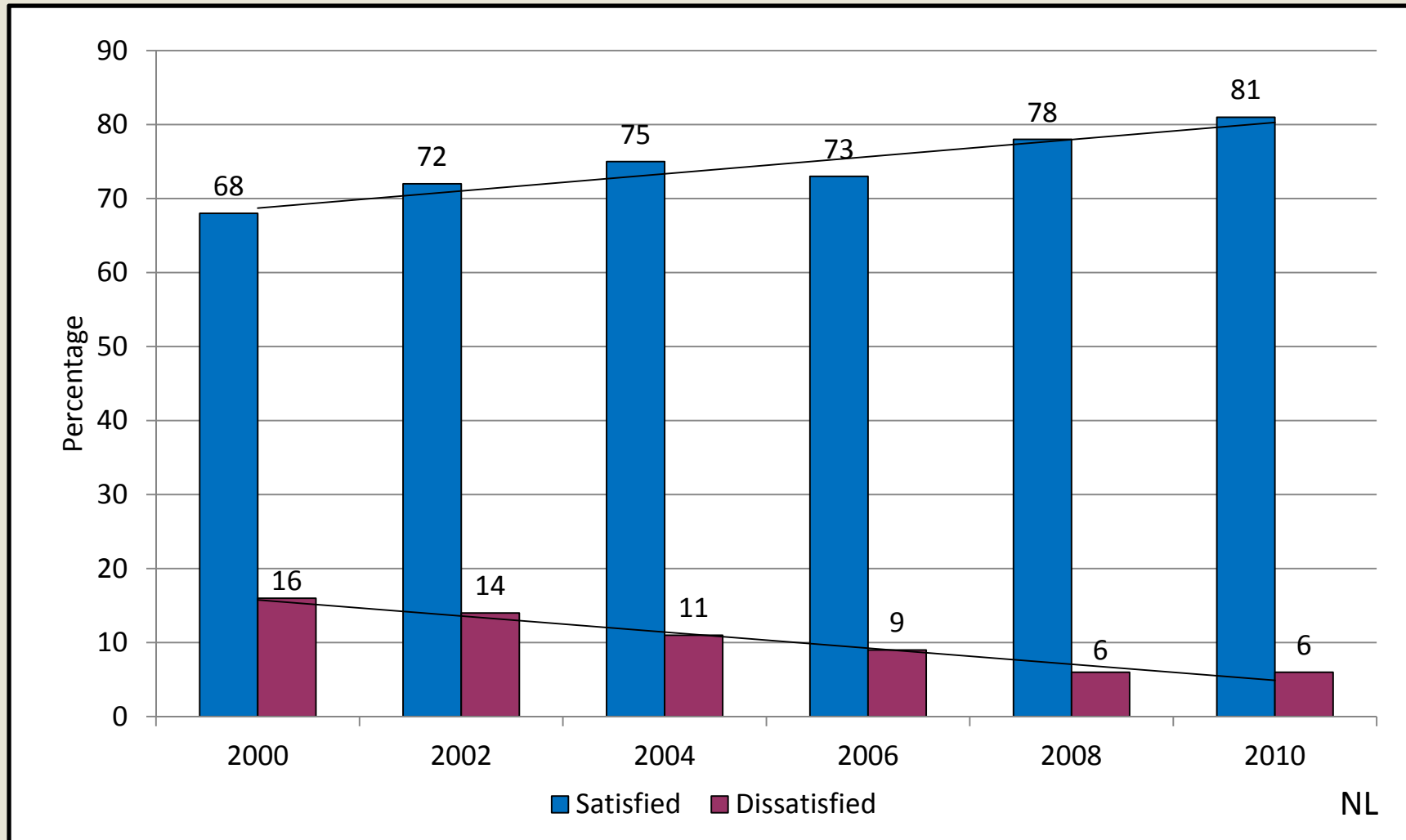
# Recommend UW to a friend or relative



# “I am able to experience intellectual growth here”



# “There is a commitment to academic excellence on this campus”



# Noel-Levitz ten most positive items

1. The campus is safe and secure for all students.	5.87*
2. This institution has a good reputation within the community.	5.77*
3. Nearly all of the faculty are knowledgeable in their field.	5.77*
4. Computer labs are adequate and accessible.	5.75*
5. I am able to experience intellectual growth here.	5.70*
6. Faculty are usually available after class and during office hours.	5.69*
7. Library resources and services are adequate.	5.68*
8. On the whole the campus is well-maintained.	5.67*
9. My academic advisor is approachable.	5.60*
10. Students are made to feel welcome on this campus.	5.58*

\*Significantly above the national average of public universities

# Noel-Levitz ten least positive items

1. The amount of student parking space on campus is adequate.	2.26**
2. Living conditions in the residence halls are comfortable.	4.57*
3. I seldom get the “run-around” when seeking information on this campus.	4.56*
4. Parking lots are well-lighted and secure.	4.69**
5. Financial aid counselors are helpful.	4.75
6. I am able to register for classes I need with few conflicts.	4.76**
7. Residence hall staff are concerned about me as an individual.	4.79
8. Student activities fees are put to good use.	4.83*
9. Channels for expressing student complaints are readily available.	4.84*
10. Campus demonstrates commitment to commuters.	4.85

\*Significantly above the national average of public universities

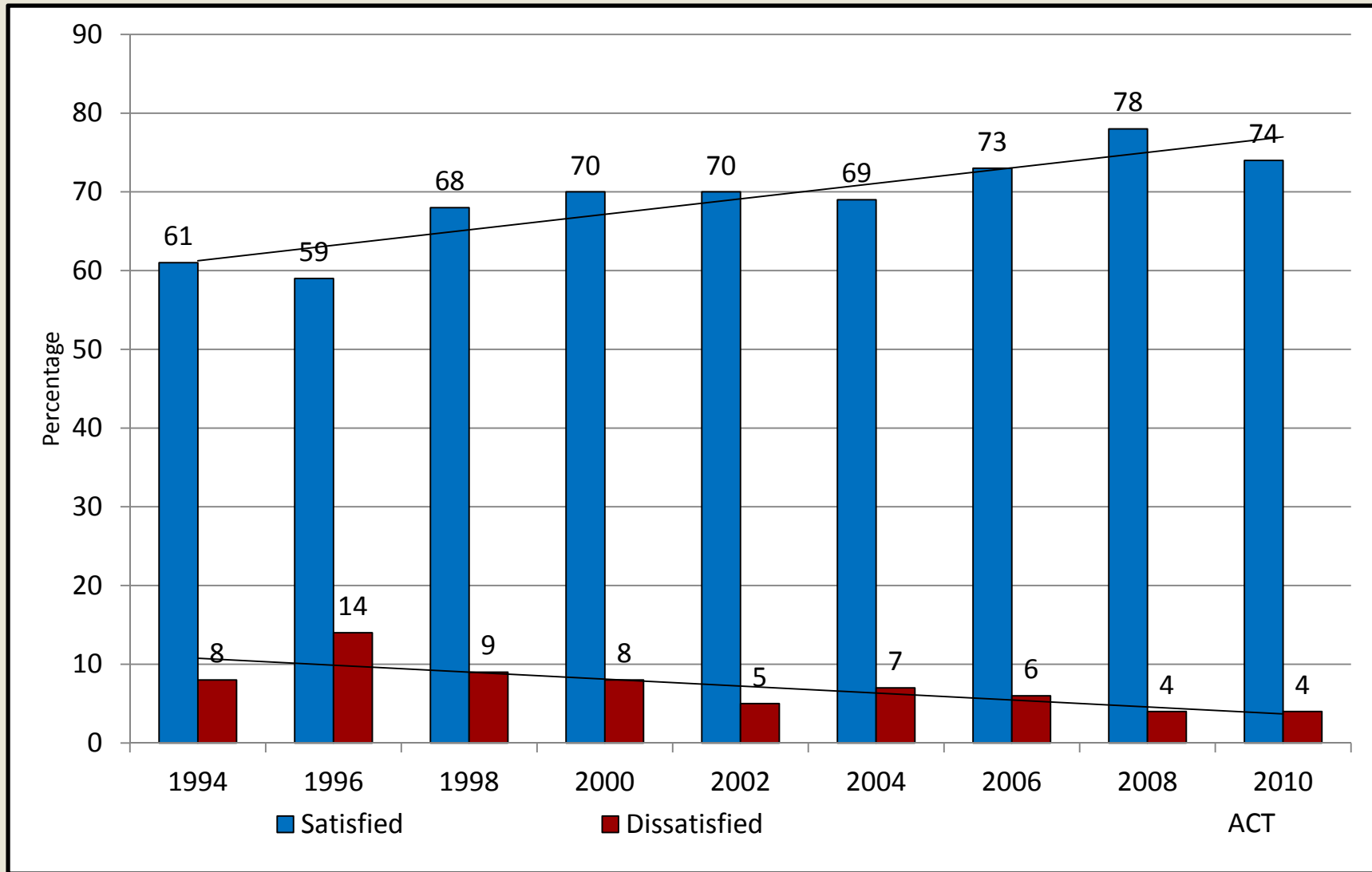
\*\*Significantly below the national average.



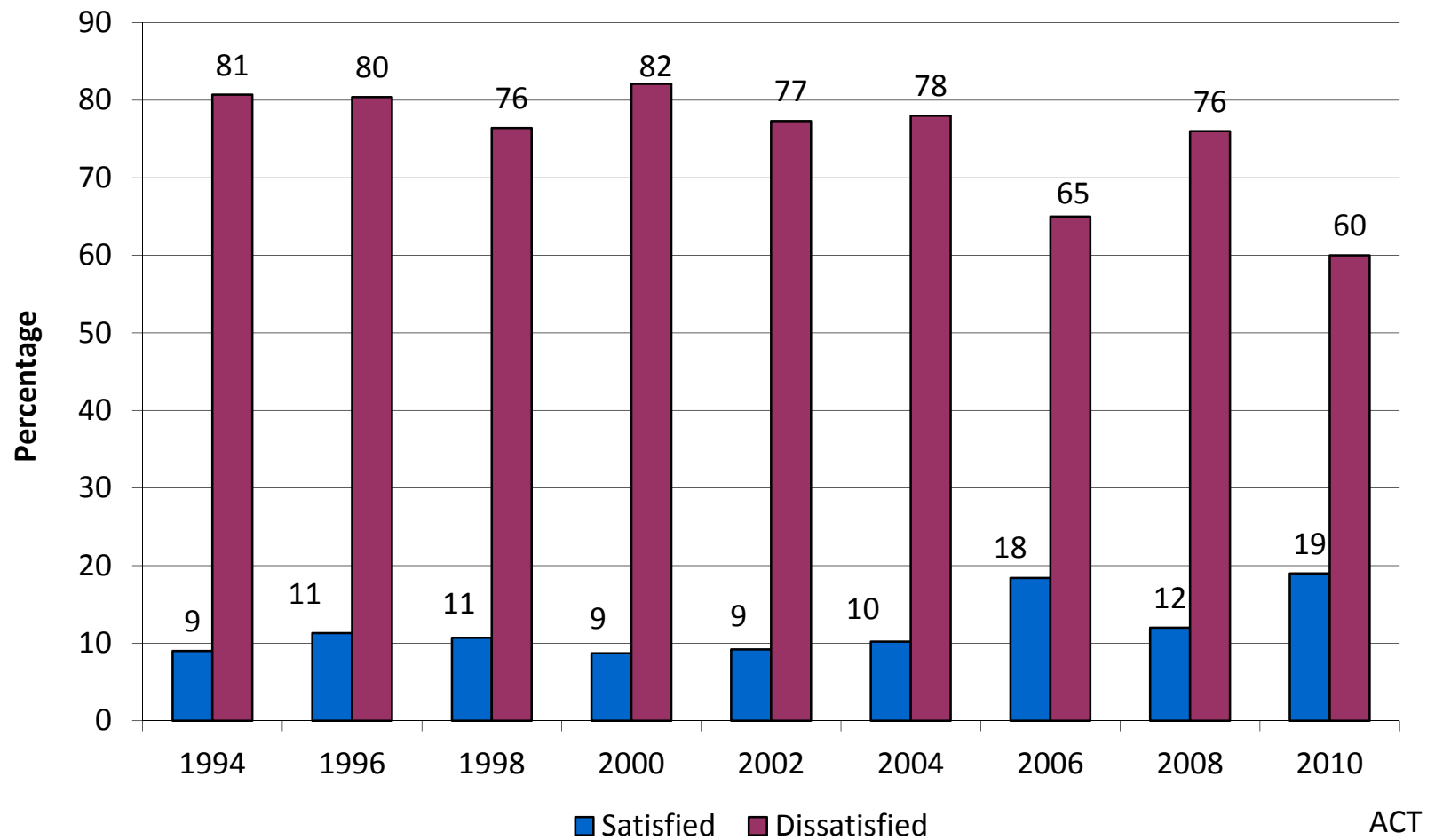
# Ten items most important to students

Ten items most important to UW students	Percent satisfied	Percent dissatisfied	Comparison to other public universities
1. The content of the courses within my major is valuable (NL-8).	81	9	No significant difference
2. The instruction in my major field is excellent (NL-16).	82	7	<b>UW significantly more positive than national sample</b>
3. My academic advisor is knowledgeable about requirements in my major (NL-33).	78	14	No significant difference
4. I am able to register for classes I need with few conflicts (NL-34).	63	27	<b>UW significantly less positive than national sample</b>
5. Nearly all of the faculty are knowledgeable in their field (NL-68).	85	4	<b>UW significantly more positive than national sample</b>
6. The campus is safe and secure for all students (NL-7).	86	3	<b>UW significantly more positive than national sample</b>
7. The quality of instruction I receive in most of my classes is excellent (NL-58).	81	8	<b>UW significantly more positive than national sample</b>
8. My academic advisor is approachable (NL-6).	80	12	<b>UW significantly more positive than national sample</b>
9. Tuition paid is a worthwhile investment (NL-66).	78	10	<b>UW significantly more positive than national sample</b>
10. Major requirements are clear and reasonable (NL-55).	78	11	No significant difference

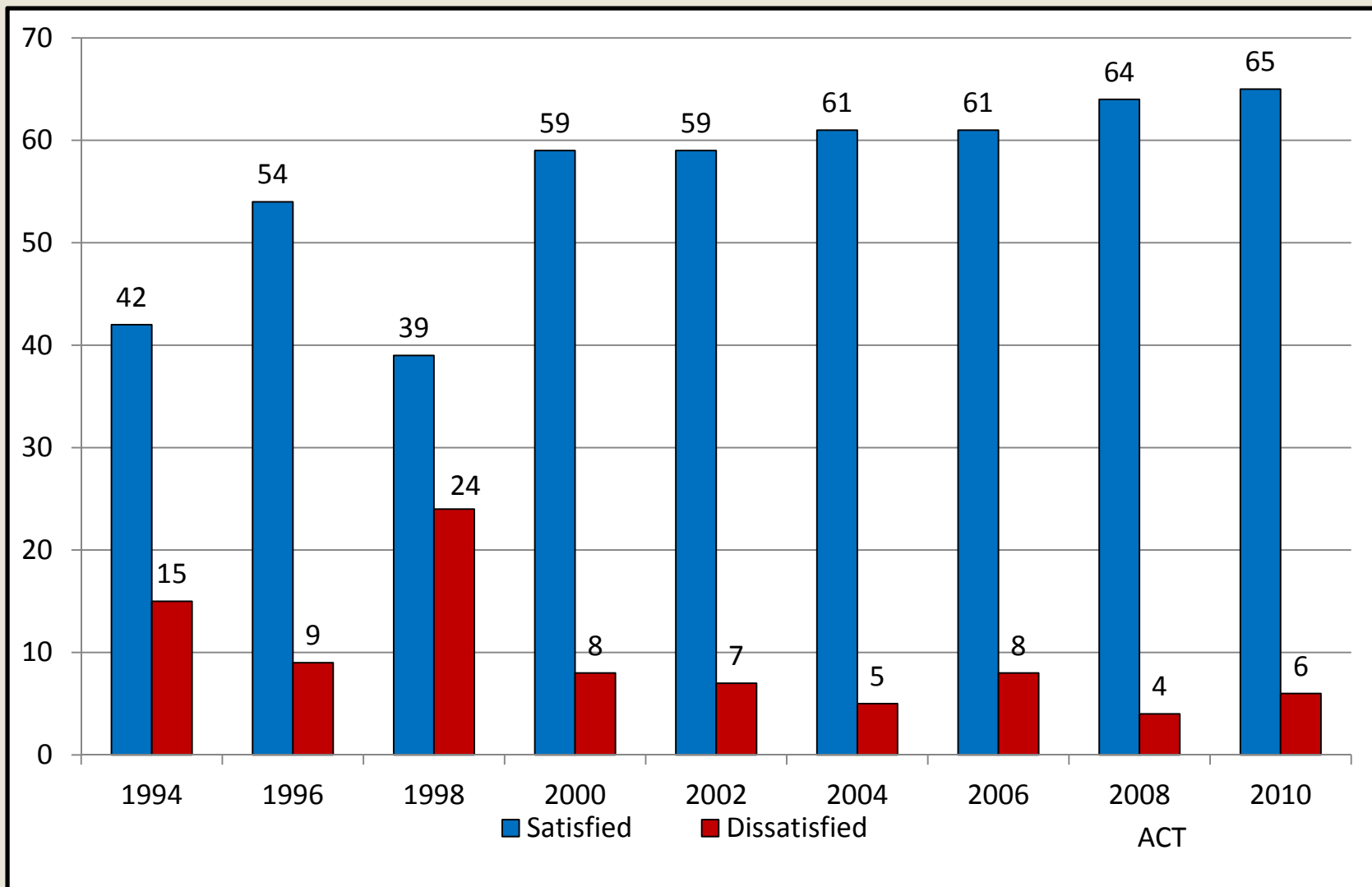
# Personal security/safety at UW



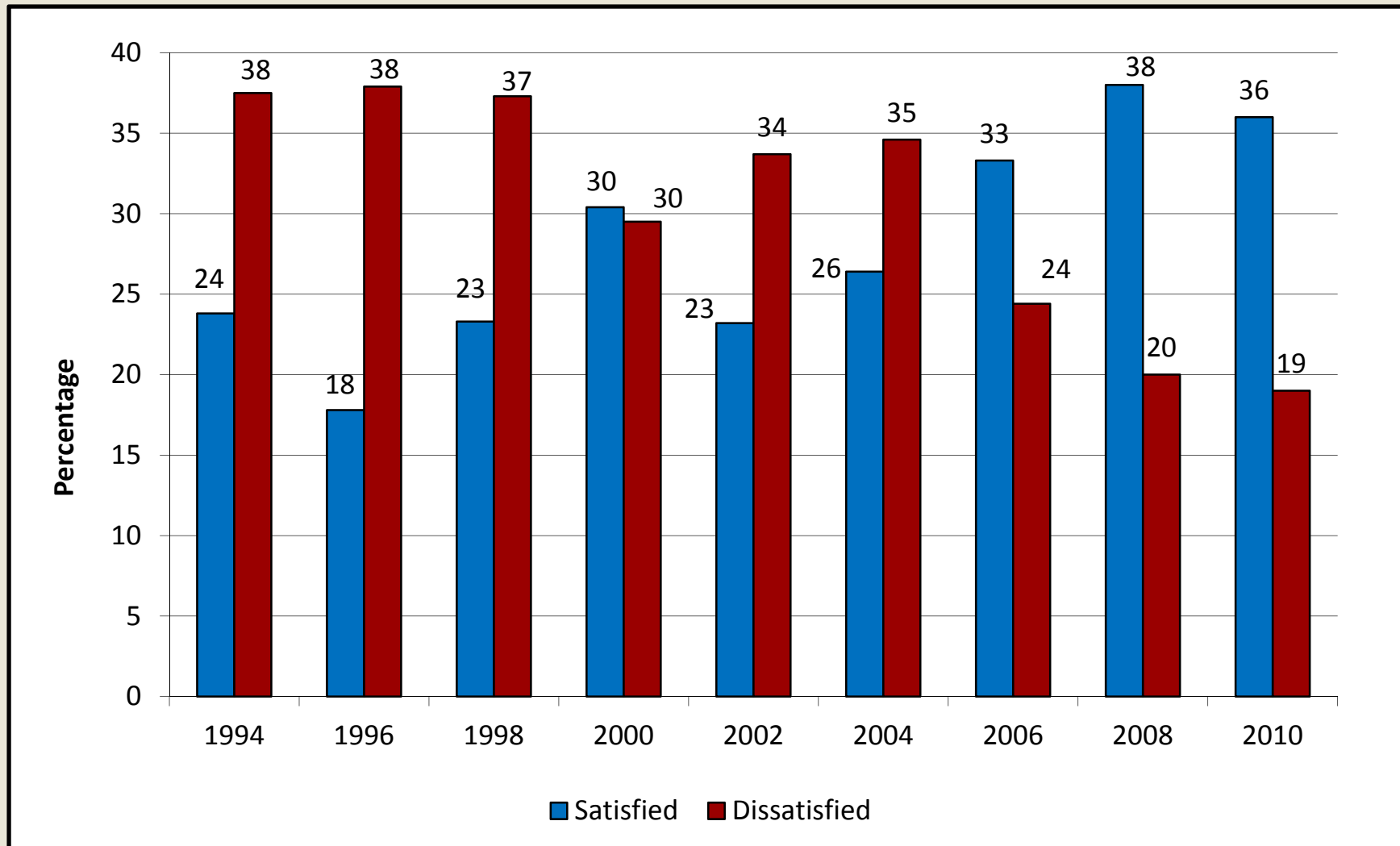
# Parking facilities and services



# Racial harmony at UW



# Satisfaction with how student fees are used

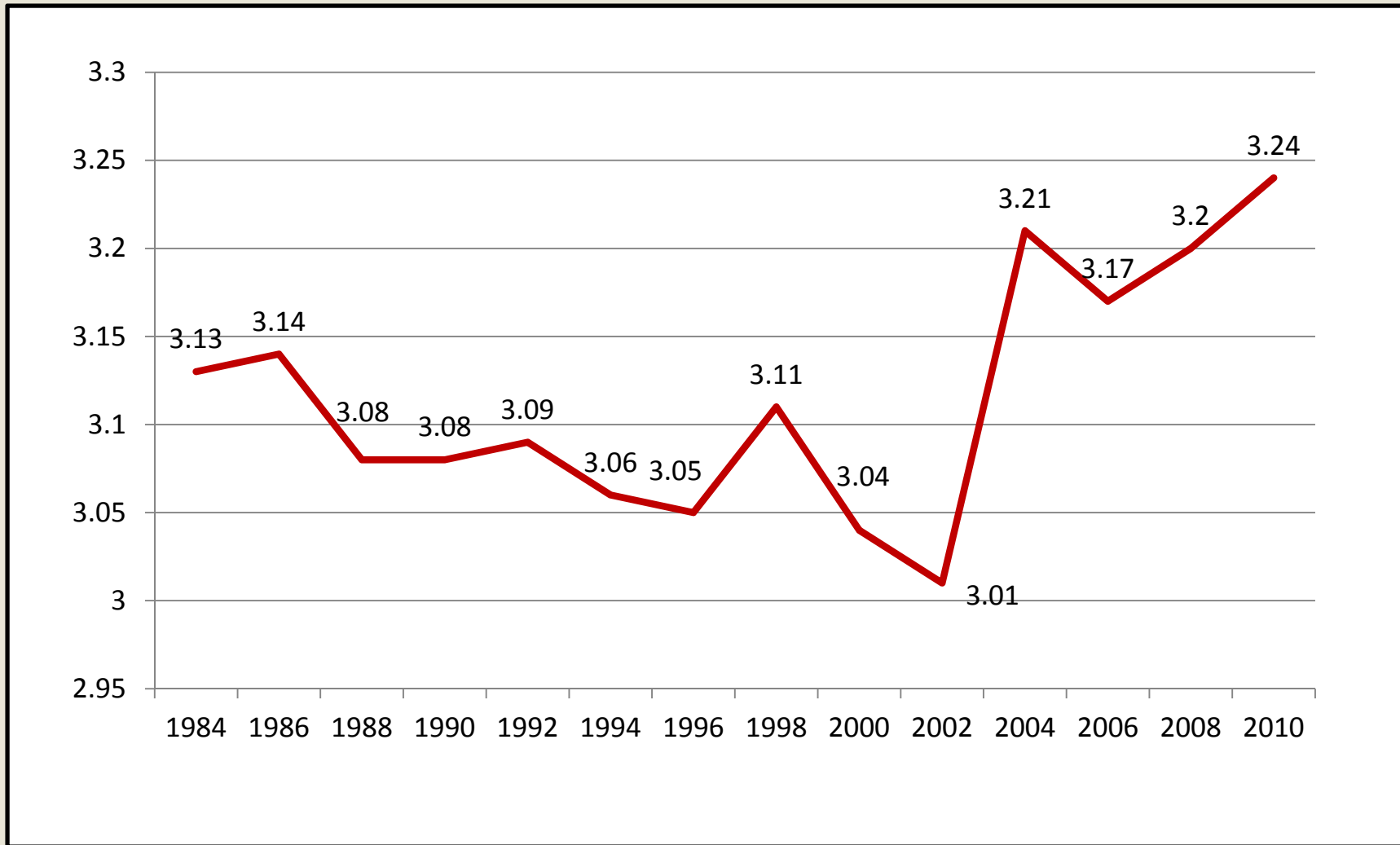


# Wyoming Statewide Election Survey 2010

Since 1972 the Wyoming Statewide Election Survey has been conducted in the month prior to the state's general election.

It has been administered by the Political Science Department and conducted by the University of Wyoming Survey Research Center. A total of 705 persons were interviewed.

# What grade would you give the UW?



# UW GPA by political party identification

