

A Biodiversity Institute at UW

Biodiversity: “the totality of genes, species, and ecosystems in a region or in the world.”



2011 President's Task Force on Biodiversity:

Carol Frost, coordinator

Ed Barbier, Economics & Finance

Greg Brown, Botany

Indy Burke, ENR

Roger Coupal, Agricultural & Applied Economics

Paul Flesher, Religious Studies

Jake Goheen, Zoology & Physiology

Kristina Hufford, Ecosystems Science & Management

Steve Jackson, Botany

Bill Lauenroth, Botany

Carlos Martinez del Rio, Zoology & Physiology

Deborah Paulson, Geography

From the task force report, July 2011:

The University of Wyoming's Biodiversity Initiative (WyBI) will promote **research, education, and outreach** concerning the study of biodiversity broadly construed.

This study includes both the **science** of biological diversity and the analysis of the **interplay between society and the biological variety of the natural world.**

For full report, see Academic Affairs website:

http://www.uwyo.edu/acadaffairs/_files/docs/biodiversity_initiative_tf_rep.pdf

Why does this idea make sense at UW?

Faculty expertise:

- Earth sciences
- Atmospheric science
- Hydrology
- Ecosystem science & modeling
- Wildlife biology & diseases
- Natural resource economics
- Rangeland & forest ecology
- Paleoecology
- Biogeochemistry
- Humanities, fine arts, & creative writing

UW's Institutional Assets:

- Haub School of Environment & Natural Resources
- Ruckelshaus Institute
- Program in Ecology
- Wyoming Reclamation & Restoration Center
- Wyoming Natural Diversity Database
- Stable Isotopes Laboratory
- Wyoming Geographic Information Science Center
- Rocky Mountain Herbarium
- Nucleic Acid Exploration Facility
- Berry Center for Biodiversity Conservation
- Entomology Museum
- UW-NPS Research Center (Jackson Hole)
- USFWS Cooperative Study Unit (Zoo-Phys)
- Partnership with NCAR

An unsurpassed
setting for the
study of
biodiversity



Provost's Task Force (December 2011)

Carlos Martinez Del Rio, Zoo-Phys, task force chair

Indy Burke, Director, ENR

Roger Coupal, Head, Ag & Applied Economics

Paul Flesher, Director, Religious Studies

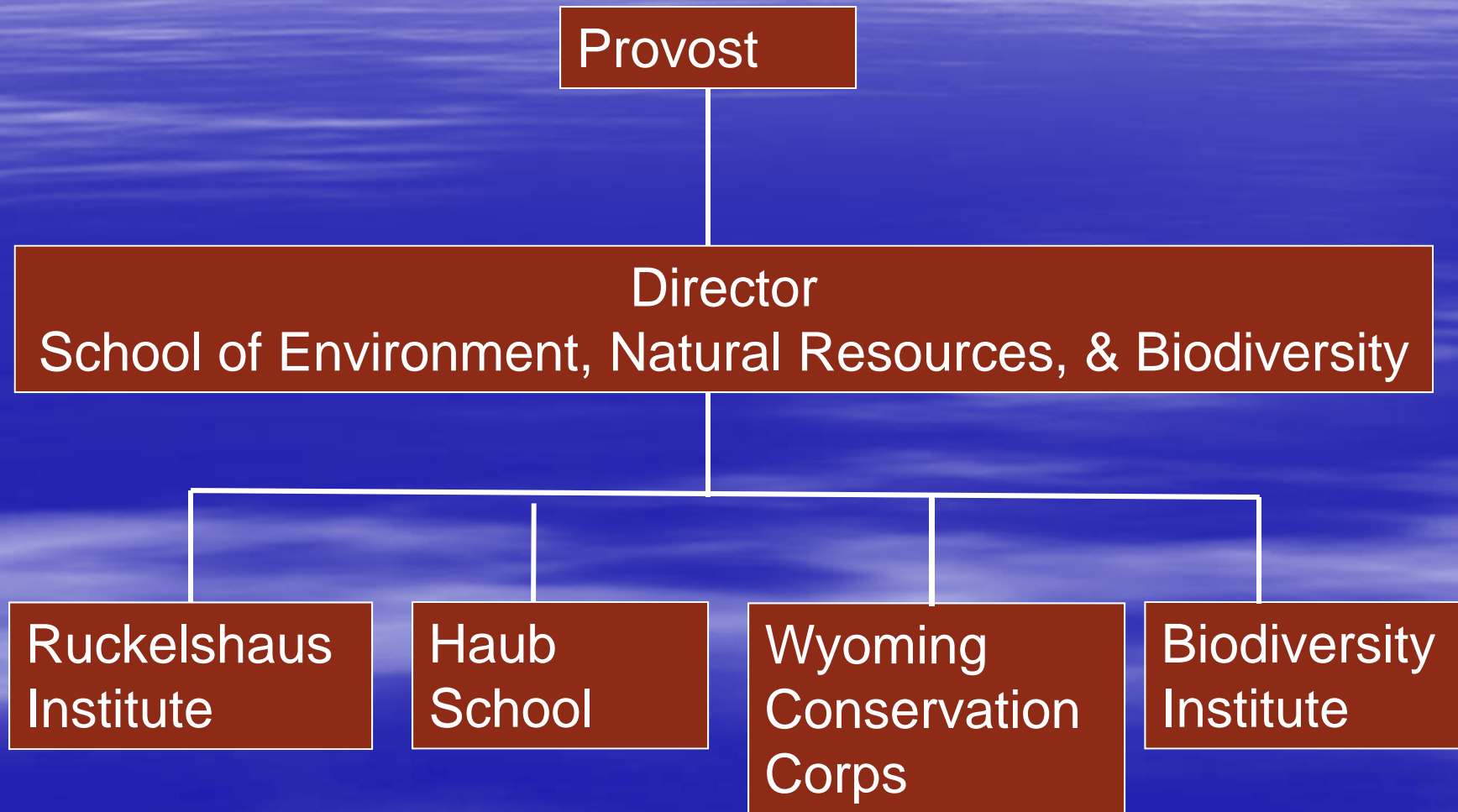
Frank Galey, Dean of Agriculture & Natural Resources

Oliver Walter, Dean of Arts & Sciences

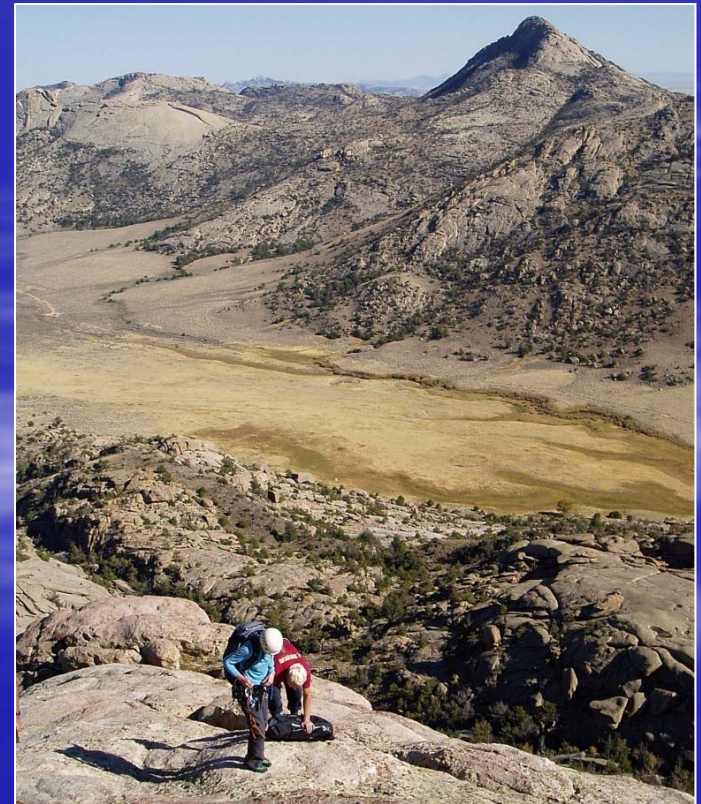
Recommend:

- Organizational structure & relationship to existing units
- Early-stage hiring strategy

Recommended structure:



- Locates the Biodiversity Institute in a home that's hospitable to interdisciplinary teaching and scholarship.
- May have a demonstration effect for other units with related missions: ENR is a good home.
- Takes a step toward greater symmetry with SER and the Outreach School.



Search for a director:

- International in scope
- Internationally recognized reputation in biology
- Earned doctorate
- Demonstrated excellence in research, teaching, and professional service commensurate the rank of Full Professor.

Search committee for institute director

Indy Burke

Wilma Varga,
Academic Affairs

Dave Williams, ES&M, chair
Ed Barbier, Economics & Finance
Gary Beauvais, WyNDD
Greg Brown, Botany
Teena Gabrielson, Political Science
Jake Goheen, Zoo-Phys
Pete Stahl, ES&M
Naomi Ward, Molecular Biology

Carol Frost, VP for Special Projects

QUESTIONS?

