

# High Bay and Engineering Building Projects Status

UW Board of Trustees Meeting  
7 May 2014



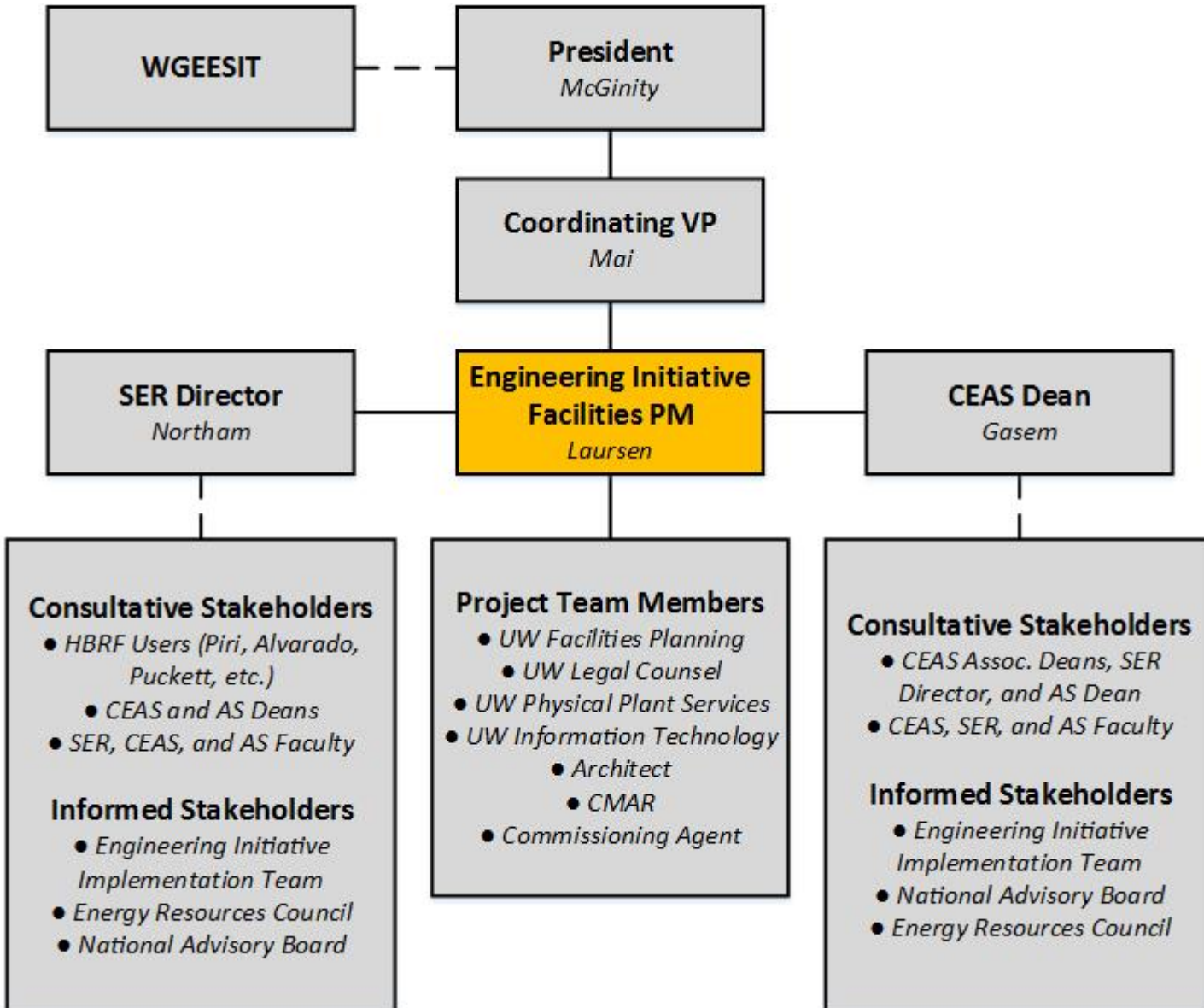
UNIVERSITY OF WYOMING

# Presentation Outline

- Key Project Structures
- High Bay Research Facility (HBRF) Status
- Engineering Building (EB) Status

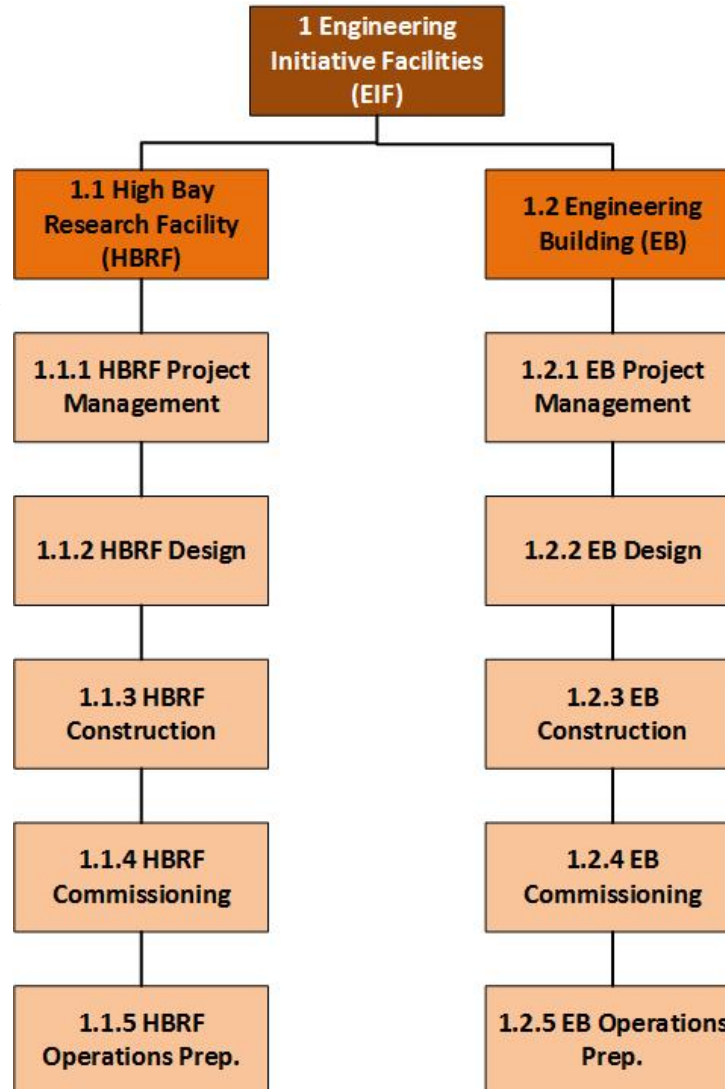


# Projects Delivery Model



# Engineering Initiative Facilities (EIF) Work Breakdown Structure (WBS)

*Unified project management processes implemented for both projects, with separate scope, schedule, and budget definition and management for each construction facility/building*



## **HBRF STATUS**

- Schematic design underway – planned completion early June 2014
- CMAR selection process initiated 4/15/14 – selection completion and presentation to BOT mid-June 2014
- Commissioning Agent (CA) selection process for HBRF and EB launched 4/29/14

## **EB STATUS**

- Integrated space and CEAS departmental space needs reviews underway – May 2014 completion
- Level I Planning completion and presentation to WGEESIT – end of June 2014

# HBRF Construction Project Budget

	Building Construction	Instrumentation
Private Sector	\$10.6M	\$4.4M
State Match	\$15.0M	--
<b>TOTAL:</b>	<b>\$25.6M</b>	<b>\$4.4M</b>

*Design, construction, and commissioning of HBRF core and shell to be completed within total budget of \$25.6M.*

*Laboratory fit-up costs (e.g., construction beyond core and shell, specialized equipment, etc.) to be met using additional funding.*

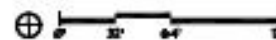


# SD Work Session 1 (5/6/14): Preferred Design Option



**'L' Quad**

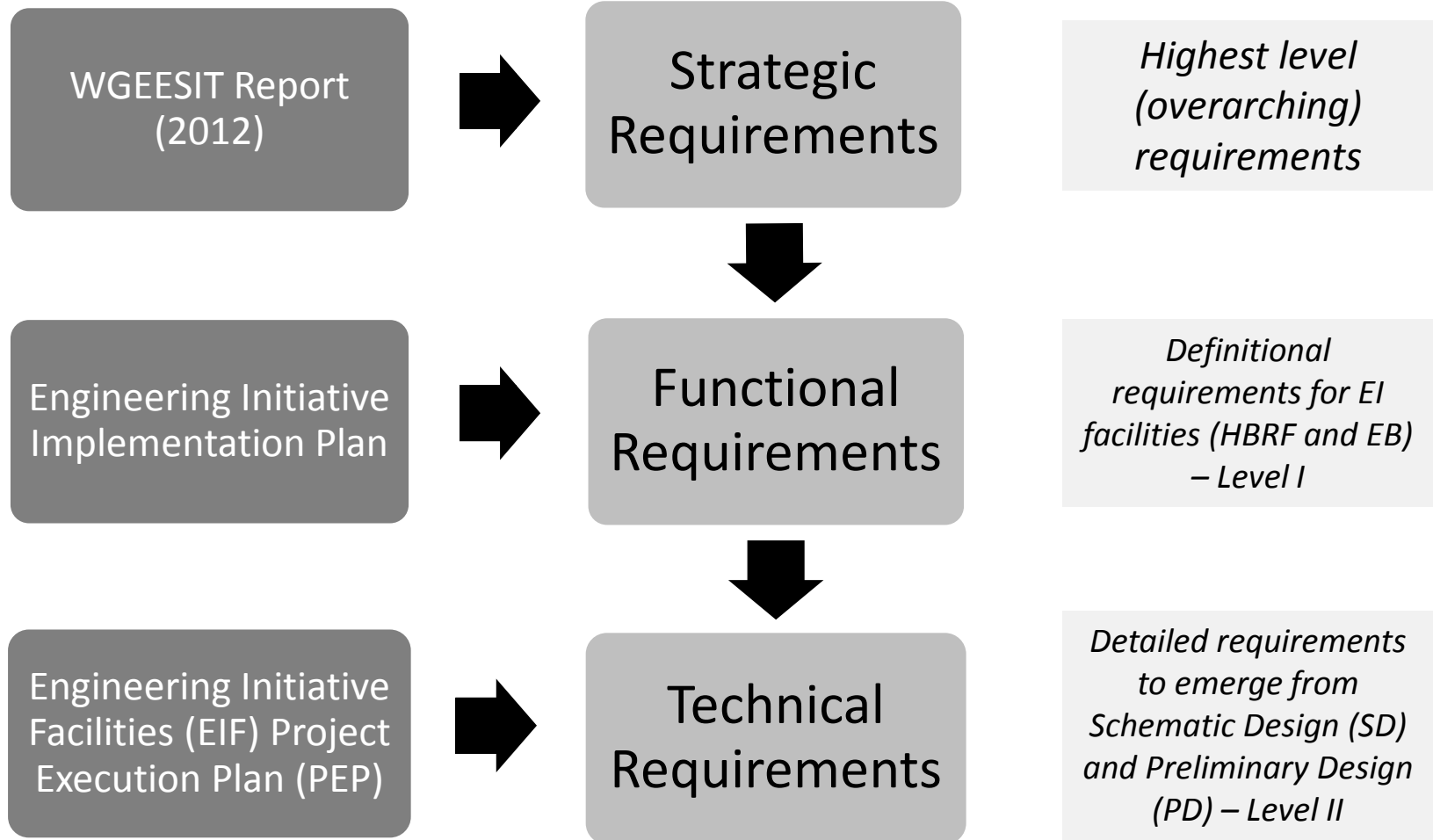
Area: 84,165 sq. ft.  
Perimeter: 1,162 ft.



1/32" = 1'-0"  
6 May 2014



# Requirements-based Project Model





# From Strategic EI Requirements to EB Functional Requirements

## Strategic Requirements

- Define areas of excellence
- Improve integration across colleges and facilities
- Enhance undergraduate curriculum
- Improve the number and quality of faculty and students
- Build world-class research capabilities that will have a significant impact on Wyoming and the nation and will enrich student mentoring
- Invest in cutting edge R&D equipment needed to support initiative programs
- Develop partnerships with the state, national agencies, and industry to actualize research findings and catalyze economic development in Wyoming
- Improve connections with alumni and other constituencies



## Functional Requirements

- Flexible/reprogrammable spaces
- Collaborative research areas
- Instructional laboratory spaces
- Core lecture halls
- Common student areas
- Collaborative work areas
- CEAS departmental offices

# Completion of EB Level I Planning

- Structured to ensure adherence to a total EB construction project budget of \$110M.
  - Budget includes design, construction, commissioning, and project administrative costs (geotechnical work, furnishings, etc.)
- Prioritization approach being used that focuses on:
  - Identification of required spaces and priority ranking of each
  - Cost estimation of prioritized spaces using collected space estimates (sq. ft.) and construction cost (\$/sq. ft.) data
- EB Level I Planning Summary to include final priority matrix and space needs targeted for delivery within \$110M project budget.
  - To be presented to WGEESIT during 23-24 June meeting

# EB Status and Two-Month Timeline

ID	Task Mode	WBS	Task Name	% Complete	Duration	Start	Finish	2014											
								4th Quarter				1st Quarter			2nd Quarter				
								Sep	Oct	Nov	Dec	Jan	Feb	Mar	Apr	May	Jun		
64		1.2.1	EB Project Management	0%	52 days	Mon 4/21/14	Tue 7/1/14												
65		1.2.1.1	Complete integrated facilities and CEAS departmental space reviews	0%	25 days	Mon 4/21/14	Fri 5/23/14												
66		1.2.1.2	Assemble EB scope definition documentation	0%	15 days	Mon 5/26/14	Fri 6/13/14												
67		1.2.1.3	Conduct EB Scope Requirements Workshop	0%	3 days	Mon 6/16/14	Wed 6/18/14												
68		1.2.1.4	Present EB Level I scope and planning summary to WGEESIT	0%	2 days	Mon 6/23/14	Tue 6/24/14												
69		1.2.1.5	Prepare and release EB Scope Requirements Workshop report	0%	8 days	Thu 6/19/14	Mon 6/30/14												
70		1.2.1.6	EB Level I completion/request to proceed to Level II memorandum to WGEESIT submitted	0%	0 days	Tue 7/1/14	Tue 7/1/14												
71		1.2.2	EB Design	0%	10 days	Thu 6/19/14	Wed 7/2/14												
72		1.2.2.1	Negotiate EB design team contract	0%	7 days	Thu 6/19/14	Fri 6/27/14												
73		1.2.2.2	EB Schematic Design (SD)	0%	0 days	Wed 7/2/14	Wed 7/2/14												
74		1.2.2.2.1	EB Schematic Design Kickoff Meeting conducted	0%	0 days	Wed 7/2/14	Wed 7/2/14												

**High-level schedule outlook (current proposed):**

**Design: Summer 2014 – Summer 2015**

**Construction: Summer/Fall 2015 – Fall 2017**

# Questions

