

**THE UNIVERSITY OF WYOMING
BOARD OF TRUSTEES' REPORT**

May 7-9, 2014

The final report can be found on the University of Wyoming Board of Trustees website at
<http://www.uwyo.edu/trustees/>

University of Wyoming Mission Statement (March 2009)

The University of Wyoming aspires to be one of the nation's finest public land-grant research universities. We serve as a statewide resource for accessible and affordable higher education of the highest quality; rigorous scholarship; technology transfer; economic and community development; and responsible stewardship of our cultural, historical, and natural resources.

In the exercise of our primary mission to promote learning, we seek to provide academic and co-curricular opportunities that will:

- Expose students to the frontiers of scholarship and creative activity and the complexities of an interdependent world;
- Ensure individual interactions among students, faculty, and staff;
- Nurture an environment that values and manifests diversity, free expression, academic freedom, personal integrity, and mutual respect; and
- Promote opportunities for personal growth, physical health, athletic competition, and leadership development for all members of the University community.

As Wyoming's only university, we are committed to outreach and service that extend our human talent and technological capacity to serve the people in our communities, our state, the nation, and the world.

The primary vehicles for identifying the specific actions and resource allocations needed to accomplish this complex mission are the University's strategic plans, revised periodically.

TRUSTEES OF THE UNIVERSITY OF WYOMING AGENDA
May 7-9, 2014

WORK SESSIONS

WGEESIT/CEAS Update, Gasem/Horner/McGinity.....	1
Status of Design/Construction, Mai/Laursen/Gern.....	1
• Engineering Building	
• High Bay	
• Enzi STEM	
Science Top Quartile Initiative, McGinity.....	2
Updates to FY 2014 Operating Budget Authority, Mai.....	2
FY 2015 Operating Budget, Mai	3
Supplemental Budget Request, Mai.....	3
Administration Topics, Mai	
• Naming of the Golf Practice Facility	4
• Name Change for UW Planetarium	5
• Architect and Engineer for Corbett Pool Addition	7
• Major Maintenance Update [no materials provided]	
• Construction Update [no materials provided]	
Trustee Award of Merit Committee Update, True.....	9
Safety/Security and Clery Report Update, Mai/Collins/Axelson/Samp.....	9
Establish Date for WWAMI Report, Massie/Steiner.....	10
Family Practice Medical Center Report, Steiner	10
Undue Hardship Policy Undue Hardship Criteria for Relief of Repayment from WWAMI, WYDENT, BRAND and Psychiatric Nurse Contracts, Miller/McGinity	11
Administration Searches Update, McGinity	13
Strategic Planning Progress, McGinity/Murdock.....	13
Community College Course Transfer Issues, McGinity.....	14
Legislative Initiatives and Assignments Update, Palmerlee.....	14

BUSINESS MEETING

Roll Call

Approval of Board of Trustees Meeting Minutes

March 27-28, 2014

Approval of Executive Session Meeting Minutes

March 27-28, 2014

Election of Officers

Committee Appointments

Reports

ASUW

Staff Senate

Faculty Senate

Public Testimony

[To be held from 10:30-11:00 a.m. on Thursday, May 8, 2014]

Committee of the Whole

REGULAR BUSINESS

Board Committee Reports 15

- A. Academics and Research (Murdock)
Trustee Lauer, Committee Chair
- B. Fiscal and Legal Affairs (Mai)
Trustee Davis, Committee Chair
- C. Student Affairs/Athletics/Administration/Information Technology (Axelson)
Trustee Palmerlee, Committee Chair
- D. Alumni Board – Lauer
- E. Foundation Board – Marsh/Bostrom
- F. Haub School Environment and Natural Resources Board –Davis
- G. Energy Resources Council (ERC) –Palmerlee
- H. Trustee Award of Merit Ad Hoc Committee – True [Time held should
the committee be prepared to provide a report. Time for report also
scheduled during regular work session.]

CONSENT AGENDA

- 1. Approval of Contracts and Grants, Gern 16
- 2. Personnel, Murdock 22
- 3. Approval of Access Easement to Wyoming Military Department for Field
Maintenance Shop, Mai 53
- 4. Approval of FY 2015 Fiscal Year Operating Budget, Mai..... 56
- 5. Updates to FY 2014 Operation Budget Authority, Mai..... 56
- 6. Approval of State Matching Funds, Blalock..... 57
- 7. Master List of Degrees, Murdock 65
- 8. ASUW Constitution Revisions, Axelson..... 75
- 9. Approval of Naming of the Golf Practice Facility, Blalock/Mai..... 77
- 10. Approval of Name Change for the UW Planetarium, Blalock/Mai..... 77
- 11. Approval of Architect and Engineer for Corbett Pool Addition, Mai 77
- 12. Appointments to the University of Wyoming Research Corporation Board of
Directors, Gern..... 78
- 13. Approval of the Medical Laboratory Sciences (MLSC) Program, Murdock 79
- 14. Approval of Site Selection for ASUW Memorial, Mai 81

New Business

Old Business

Date of Next Meeting – Board of Trustees Retreat — July 15-18, 2014; Casper, Wyoming

Adjournment

Information Only Items:

- 1. Progress Report/Change Orders, Mai 83
- 2. Development Report, Blalock..... 88

AGENDA ITEM TITLE: WGEEESIT/CEAS Update, Gasem/Horner/McGinity

CHECK THE APPROPRIATE BOX(ES):

- Work Session
- Education Session
- Information Item
- Other Specify:

BACKGROUND AND POLICY CONTEXT OF ISSUE:

President McGinity, Associate Provost Khaled Gasem, and Engineering Tier I Program Coordinator Richard Horner will give an update on WGEEESIT and CEAS to the Board of Trustees. Materials may be distributed at the meeting.

AGENDA ITEM TITLE: Status of Design/Construction, Mai/Laursen/Gern

- **Engineering Building**
- **High Bay**
- **Enzi STEM**

CHECK THE APPROPRIATE BOX(ES):

- Work Session
- Education Session
- Information Item
- Other Specify:

BACKGROUND AND POLICY CONTEXT OF ISSUE:

Vice President for Administration Bill Mai, Engineering Tier I Project Manager Krista Laursen, and Vice President for Research and Economic Development Bill Gern will provide an update on the status of design and construction of several buildings. Materials may be distributed at the meeting.

AGENDA ITEM TITLE: Science Top Quartile Initiative, McGinity

CHECK THE APPROPRIATE BOX(ES):

- Work Session
- Education Session
- Information Item
- Other Specify:

BACKGROUND AND POLICY CONTEXT OF ISSUE:

President Dick McGinity will lead a discussion regarding the Science Top Quartile Initiative. Materials may be distributed at the meeting.

AGENDA ITEM TITLE: Updates to FY 2014 Operating Budget Authority, Mai

CHECK THE APPROPRIATE BOX(ES):

- Work Session
- Education Session
- Information Item
- Other

BACKGROUND AND POLICY CONTEXT OF ISSUE:

Vice President for Administration Bill Mai will discuss this topic with the Board of Trustees. Materials will be provided at the meeting.

AGENDA ITEM TITLE: FY 2015 Operating Budget, Mai

CHECK THE APPROPRIATE BOX(ES):

- Work Session
- Education Session
- Information Item
- Other

BACKGROUND AND POLICY CONTEXT OF ISSUE:

Vice President for Administration Bill Mai will discuss this topic with the Board of Trustees. Materials will be provided at the meeting.

AGENDA ITEM TITLE: Supplemental Budget Request, Mai

CHECK THE APPROPRIATE BOX(ES):

- Work Session
- Education Session
- Information Item
- Other

BACKGROUND AND POLICY CONTEXT OF ISSUE:

Vice President for Administration Bill Mai will discuss this topic with the Board of Trustees. Materials will be provided at the meeting.

AGENDA ITEM TITLE: Administration Topics, Mai

- Naming of the Golf Practice Facility
- Name Change for UW Planetarium
- Architect and Engineer for Corbett Pool Addition
- Major Maintenance Update [no materials provided]
- Construction Update [no materials provided]

CHECK THE APPROPRIATE BOX(ES):

- Work Session
 Education Session
 Information Item
 Other Specify:

Naming of the Golf Practice Facility

BACKGROUND AND POLICY CONTEXT OF ISSUE:

The new Indoor Golf Practice Facility at Jacoby Golf Course is centered on a large multi-purpose practice space that includes four (4) hitting bays that can function as either indoor netted bays or driving range tees. Adjacent to the hitting bays is an indoor synthetic putting green surface. A single-bay golf simulator completes the practice/analysis components of the facility. Support facilities include a team room with locker storage, building technology and infrastructure, a multi-use counter for building control services, restrooms for both genders, and ball cleaning/dispensing equipment for the adjacent driving range tees.

The Indoor Golf Practice Facility is located on the Jacoby Golf Course, strategically sited adjacent to the existing chipping and putting greens and the existing driving range tees near the course's 10th tee box. The location of the new facility was chosen to allow the hitting bays to function as an extension of the existing driving range, while providing a favorable building orientation to shield the hitting bays from the prevailing fall, winter and spring winds.

The total projected cost for the 3,064 SF facility was \$1,200,000. The project was funded through private donations. Construction of the Golf Practice Facility is substantially complete.

In honor of gifts to the University from Donne and Sue Fisher for the Literacy Center and the Indoor Golf Practice Facility, the University of Wyoming and the University of Wyoming Foundation propose that the Indoor Golf Practice Facility be named the "University of Wyoming Ron R. Richardson Golf Performance Center".

Ron R. Richardson recently passed away and was a significant donor, supporter, and fan of University of Wyoming Athletics. In particular, Ron was a wonderful supporter of the golf team. Ron was also a great ambassador for the University of Wyoming and the Athletic Department.

PRIOR RELATED BOARD DISCUSSIONS/ACTIONS:

- July 2012 – The Board of Trustees approved the site for the Indoor Golf Practice Facility on the Jacoby Golf Course. The Board also discussed the appointment of Hein-Bond for architectural and engineering services, although the appointment did not appear on the July consent agenda.
- January 2013 - The Board of Trustees approved contracting with the first-ranked Architect firm, TDSi.
- July 2013 - The Board of Trustees accepted the construction bid from Spiegelberg Lumber and Building Company to permit the construction of the Indoor Golf Practice Facility.

WHY THIS ITEM IS BEFORE THE BOARD:

Authorization is required from the Board of Trustees to name a building.

ARGUMENTS IN SUPPORT:

Donne and Sue Fisher made a significant gift to the University for the Literacy Center and also made a gift toward the Indoor Golf Practice Facility. It is the wish of Donne Fisher that the Indoor Golf Practice Facility be named after Ron R. Richardson. The other donors to the Indoor Golf Practice Facility are also supportive of naming the facility after Ron R. Richardson.

ARGUMENTS AGAINST:

None.

ACTION REQUIRED AT THIS BOARD MEETING:

Approval of the naming of the Indoor Golf Practice Facility as the “University of Wyoming Ron R. Richardson Golf Performance Center”.

PRESIDENT’S RECOMMENDATION:

It is recommended that the Board of Trustees of the University of Wyoming authorize the naming of the Indoor Golf Practice Facility as the “University of Wyoming Ron R. Richardson Golf Performance Center”.

Name Change for the UW Planetarium

BACKGROUND AND POLICY CONTEXT OF ISSUE:

Constructed in 1969 and refurbished in 2000, the University of Wyoming Planetarium serves astronomy enthusiasts of all ages. Part of the Department of Physics and Astronomy, the planetarium is located at the basement level between the Biological and Physical Sciences Buildings and the Classroom Building. The planetarium receives approximately 3,000 visitors annually, including K-12 school groups that visit throughout the year. It serves as a teaching laboratory for introductory astronomy courses and, on Fridays, themed shows draw in members of the community.

An \$875,000 gift from the Windy Ridge Foundation will permit the modernization and transformation of the UW Planetarium through a comprehensive renovation of the existing space and extensive technological upgrades. The gift will advance the technology to a digital planetarium,

which includes more creative educational and entertainment possibilities. Full-dome shows provide 3-D immersive media experiences, and traditional star shows can be replaced with far more interactive presentations, similar to an IMAX theater. The gift will also support undergraduate and graduate students who staff the planetarium; maintenance of and future upgrades to equipment and technology; and will allow the planetarium to accommodate K-12 school groups at a reduced cost. The gift will be funded over five years.

The Windy Ridge Foundation was established by Harry C. Vaughan, a former professor of meteorology in the Iowa State University Department of Geological and Atmospheric Sciences. Upon retirement, Vaughan moved to Laramie because it is an academic community, and he befriended a number of faculty members in the Department of Atmospheric Science. He devoted his time to his love for astronomy, built a personal observatory in his backyard to make his own astronomical observations, and mentored UW students. His passion in life was to encourage children and young adults to discover the wonders of science and to pursue their education in the sciences.

In honor of the gift from the Windy Ridge Foundation, the University of Wyoming and the University of Wyoming Foundation propose that the UW Planetarium be renamed the University of Wyoming Harry C. Vaughan Planetarium.

PRIOR RELATED BOARD DISCUSSIONS/ACTIONS:

None.

WHY THIS ITEM IS BEFORE THE BOARD:

Authorization is required from the Board of Trustees to rename the UW Planetarium.

ARGUMENTS IN SUPPORT:

The Windy Ridge Foundation, founded by Harry C. Vaughan, has contributed \$875,000 to the UW Foundation for the modernization of the UW Planetarium.

ARGUMENTS AGAINST:

None.

ACTION REQUIRED AT THIS BOARD MEETING:

Approval of the naming of the UW Planetarium as the "University of Wyoming Harry C. Vaughan Planetarium".

PRESIDENT'S RECOMMENDATION:

It is recommended that the Board of Trustees of the University of Wyoming authorize the naming of the Planetarium.

Architect and Engineer for Corbett Pool Addition

BACKGROUND AND POLICY CONTEXT OF ISSUE:

The existing Corbett Pool facility, which was built in the mid-1970s, lacks several facets important to the success of the University's student-athletes. Throughout the Mountain West Conference and across the nation, 50-meter swimming and 5-meter diving are medians for competition aquatics facilities. The current pool's size is both too short for swim meets and practice and too shallow for diving over 3-meter springboard. Secondly, the water body is contiguous, which makes it impossible for dual practice or hosting of simultaneous events. In terms of supporting core competition and training activities, the pool's deck space is minimal, the pool is supported by outdated and utilitarian locker spaces, and the lack of amenities and enhancements limits the student-athlete's experience. During competitions, spectators and athletes are removed from each other by a glass partition, separating the spectators from the action and isolating the student-athletes from the energy of the crowd.

The new natatorium will feature an eight-lane 50-meter pool with movable bulkheads, a dive tower, and diving well. Seating will be located on an upper level. As envisioned in the Athletic Facilities Master Plan, the new aquatics facilities will be located outside the footprint of the existing natatorium so the existing pool can remain in use while most of the new construction is accomplished. Much of the program space will be located within the shell of the existing natatorium. The program space will include most of the home team space including locker rooms, team room, sports medicine, and video/film room. Mechanical space for the new pool will be located at grade within the footprint of the existing natatorium.

The total projected cost for the planned 36,000 SF addition and renovation of approximately 23,000 SF is \$21,000,000. The project would be funded through state appropriations.

The professional architect/engineering services were publicly advertised in March and April 2014 with qualification responses received by April 15, 2014. Eight statements-of-qualification were received from firms. Three respondents were scheduled for interviews on April 29, 2014. The recommended ranking of the firms by the Corbett Pool Addition planning team and the Facilities Planning office is as follows:

1. GSG Architecture, Casper, Wyoming
2. Dale Buckingham Architects, Sheridan, Wyoming
3. TSP Incorporated, Sheridan, Wyoming

PRIOR RELATED BOARD DISCUSSIONS/ACTIONS:

None.

WHY THIS ITEM IS BEFORE THE BOARD:

Authorization is required from the Board of Trustees to contract the architect/engineering services for the Corbett Pool Addition.

ARGUMENTS IN SUPPORT:

The Legislature has appropriated \$500,000 for Level II design of the Corbett Pool Addition.

ARGUMENTS AGAINST:

None.

ACTION REQUIRED AT THIS BOARD MEETING:

Authorization to contract with the first-ranked firm, GSG Architecture. If favorable negotiations cannot be completed with the first-ranked firm, negotiations will be opened with the second-ranked firm and third-ranked firm until a contractual agreement can be successfully completed.

PRESIDENT'S RECOMMENDATION:

It is recommended that the Board of Trustees of the University of Wyoming authorize the contracting with the recommended first-ranked architect/engineering firm, GSG Architecture.

AGENDA ITEM TITLE: Trustee Award of Merit Committee Update, True

CHECK THE APPROPRIATE BOX(ES):

- Work Session
- Education Session
- Information Item
- Other

Trustee Dave True, chair of the Trustee Award of Merit Committee, and his colleagues will provide an update to the Board regarding their committee work.

AGENDA ITEM TITLE: Safety/Security and Clery Report Update, Mai/Collins/Axelson/Samp

CHECK THE APPROPRIATE BOX(ES):

- Work Session
- Education Session
- Information Item
- Other Specify:

BACKGROUND AND POLICY CONTEXT OF ISSUE:

Vice President for Administration Bill Mai, Vice President for Student Affairs Sara Axelson, Associate Vice President for Administrative Operations Mark Collins, and Police Chief Mike Samp will provide the Board with an update regarding safety and security at UW and information from the recent Clery report.

AGENDA ITEM TITLE: Establish Date for WWAMI Report Update, Massie/Steiner

CHECK THE APPROPRIATE BOX(ES):

- Work Session
- Education Session
- Information Item
- Other

BACKGROUND AND POLICY CONTEXT OF ISSUE:

Director for Governmental Relations Mike Massie and Dean of Health Sciences Joe Steiner will discuss this topic with the Board of Trustees. Materials may be distributed at the meeting.

AGENDA ITEM TITLE: Family Practice Medical Center Report, Steiner

CHECK THE APPROPRIATE BOX(ES):

- Work Session
- Education Session
- Information Item
- Other

BACKGROUND AND POLICY CONTEXT OF ISSUE:

Dean of Health Sciences Joe Steiner will discuss this topic with the Board of Trustees. Materials may be distributed at the meeting.

AGENDA ITEM TITLE:

Undue Hardship Policy Undue Hardship Criteria for Relief of Repayment from WWAMI, WYDENT, BRAND and Psychiatric Nurse Contracts, Miller/McGinity

CHECK THE APPROPRIATE BOX(ES):

- Work Session
- Education Session
- Information Item
- Other Specify:

BACKGROUND AND POLICY CONTEXT OF ISSUE:

The WWAMI (medical program), WYDENT (dental program), BRAND (accelerated nursing program) and Psychiatric Nurse programs in Wyoming allow a student to be relieved of repayment for monies expended on their behalf by the University under each program if the student practices in Wyoming after completion of the program for a set period of time, which varies according to the program. In addition, Wyoming statutes also allow the Board, upon recommendation of the President, to relieve a student from repayment of those monies when the student can show repayment causes them an undue hardship. Each of the University of Wyoming contracts for these programs provide the same process for a student to apply for relief of repayment based on undue hardship, including review of the student's application initially by a designated University Review Committee and then followed by review of the application by the President. The contracts specifically indicate that the President shall then make a recommendation to the Board on whether to grant or deny the student's request based on "criteria established by the President." These criteria have not previously been formally adopted.

Attached are the criteria the President intends to adopt for relief of repayment due to undue hardship, which include a discussion of factors to be considered when a student requests partial relief of repayment based on part-time practice in Wyoming. These criteria have been developed in consultation with the College of Health Sciences.

PRIOR RELATED BOARD DISCUSSIONS/ACTIONS:

None as to adoption of the specific criteria by the President.

WHY THIS ITEM IS BEFORE THE BOARD:

This item is before the Board to advise them that the President intends to adopt these criteria for relief of repayment under WWAMI, WYDENT, BRAND and the Psychiatric Nurse programs based on a finding of "undue hardship." No action by the Board is required.

**Criteria and Factors Warranting Relief from Repayment of Loans under WWAMI, WYDENT,
BRAND, and Psychiatric Nurse Practitioner Contracts**
Adopted May 8, 2014

- 1) Contracts for students for WWAMI, WYDENT, BRAND and Psychiatric Nurse Practitioner education contain provisions indicating that the Board of Trustees, upon the President's recommendation, using criteria established by the President, may relieve a person from repayment of monies owed upon showing of undue hardship. The President establishes the following criteria in determining undue hardship, for the purpose of granting temporary or permanent relief from repayment:
 - a) Death
 - b) Total or partial permanent physical or mental disability or serious medical condition
 - c) Caring for member of immediate family with total or partial permanent physical or mental disability or serious medical condition
 - d) Substantial financial hardship, including but not limited to bankruptcy, judgments arising from litigation, or the likelihood UW would be unable to collect the owed monies as a matter of law over a reasonable period of time.
 - e) Unforeseen catastrophic events impeding ones' ability to continue to practice the health care profession (i.e. fire, flood, etc.)

- 2) Contracts also allow for full or partial cancellation of repayment as follows:
 - a) Part-time professional practice or equivalent pursuits
 - i) Note: WWAMI & WYDENT Contracts indicate Board may consider this for cancellation purposes; it is discretionary. However, past practice indicates that Board considers the following in order to consider granting partial cancellation under this section:
 - (1) Whether the person practices in Wyoming
 - (2) Whether the person will practice in their respective field at least 20 hours per week
 - (3) Whether part-time practice is due to factors like pregnancy, starting up a practice, health-related problems preventing the person from practicing, etc.
 - ii.) BRAND and Psychiatric Nurse contracts state that part-time professional practice or other professional pursuits shall be credited by the Board for cancellation purposes on a proportional basis.
 - iii.) Board also has option to extend time for contract repayment.
 - b) For WWAMI/WYDENT, the practitioner may return to full-time practice in Wyoming any time prior to the expiration of 48 calendar months beginning with the calendar month in which the first repayment was due to the University (WWAMI/WYDENT) and such subsequent service will count toward full or partial cancellation of repayment.

- 3) Situations not considered undue hardship or warranting relief from repayment:
 - a) inability to find full or part- time work in Wyoming
 - i) Contract provisions indicate there is no guarantee of work in Wyoming
 - b) Part-time practice under 20 hours per week or practice in a profession substantially different from that contemplated by the respective educational program (This provision applies to WWAMI, WYDENT contracts.)

AGENDA ITEM TITLE: Administrative Searches Update, McGinity

CHECK THE APPROPRIATE BOX(ES):

- Work Session
- Education Session
- Information Item
- Other Specify:

BACKGROUND AND POLICY CONTEXT OF ISSUE:

President Dick McGinity will update the Board on the progress being made in the various administrative searches.

AGENDA ITEM TITLE: Strategic Planning Progress, McGinity/Murdock

CHECK THE APPROPRIATE BOX(ES):

- Work Session
- Education Session
- Information Item
- Other Specify:

BACKGROUND AND POLICY CONTEXT OF ISSUE:

President Dick McGinity and Interim Vice President for Academic Affairs Maggi Murdock will lead the Board in a discussion regarding UW's strategic planning process and update them on the progress.

AGENDA ITEM TITLE: Community College Course Transfer Issues, McGinity

CHECK THE APPROPRIATE BOX(ES):

- Work Session
- Education Session
- Information Item
- Other Specify:

BACKGROUND AND POLICY CONTEXT OF ISSUE:

President Dick McGinity will lead the Board in a discussion regarding this topic.

AGENDA ITEM TITLE: Legislative Initiatives and Assignments Update, Palmerlee

CHECK THE APPROPRIATE BOX(ES):

- Work Session
- Education Session
- Information Item
- Other Specify:

BACKGROUND AND POLICY CONTEXT OF ISSUE:

Trustee Palmerlee will discuss the various legislative initiatives and assignments.

Committee of the Whole: REGULAR BUSINESS
Board of Trustees Committee Reports

CHECK THE APPROPRIATE BOX(ES):

- Work Session
- Education Session
- Information Item
- Other Specify: Committee of the Whole (Regular Business)

A. Academics and Research Committee (Murdock)

Trustee Lauer, Committee Chair

B. Fiscal and Legal Affairs Committee (Mai/Lowe)

Trustee Davis, Committee Chair

C. Student Affairs/Athletics/Administration/Information Technology Committee (Axelson)

Trustee Palmerlee, Committee Chair

D. Alumni Board

Trustee Lauer, Board Liaison

E. Foundation Board

Trustees Marsh and Bostrom, Board Liaisons

F. Haub School of Environment and Natural Resources Board

Trustee Davis, Board Liaison

G. Energy Resources Council (ERC)

Trustee Palmerlee, Board Liaison

H. Trustee Award of Merit Ad Hoc Committee

Trustee True (Time held should the committee be prepared to provide a report. Time for report also scheduled during regular work session.)

1. Committee of the Whole- CONSENT AGENDA
Approval of Contracts and Grants, Gern

CHECK THE APPROPRIATE BOX(ES):

- Work Session
- Education Session
- Information Item
- Other Specify: Committee of the Whole (Consent Agenda)

BACKGROUND AND POLICY CONTEXT OF ISSUE:

Sponsored Programs

The following sponsored programs are accepted subject to compliance with the University's policies on classified information and protection of human subjects. This report covers the period March 2014.

March 2014

Sponsor	Amount	Principal Investigator (PI)	Co-PI	Dept	Description
Battelle Memorial Institute	\$10,000	Miller, Quin		Geology/Geophysics	Basalt Mineral Kinetics
Colorado State University	\$33,000	Harnisch, Brian		Wyoming Survey & Analysis Center	Reducing Risk of Wildfires in Florida and California: Online Survey of Households to Measure Public Opinion
Earthwatch Institute - US/Intrntl	\$30,000	Goheen, Jacob		Zoology	Predator-prey Dynamics and Livestock Production in Human-occupied Savannas: Using Cattle to Conserve Wildlife
Jet Propulsion Laboratory	\$6,000	Myers, Adam D		Physics/Astronomy	SpIES: The Spitzer-IRAC Equatorial Survey
Laramie County	\$1,979	Gribb, William		Geography/Recreation	Laramie County Comprehensive Plan: Environmental Element Sustainability Metrics and Policy Options
Laramie, City of	\$600	Gribb, William		Geography/Recreation	Monolith Ranch Environmental Inventory and Land Use Examination
Maryland, University of	\$38,130	Mavriplis, Dimitri J		Mechanical Engineering	Vertical Lift Research Center of Excellence
Metro Wastewater Reclamation District	\$5,233	Rahel, Frank		Zoology	Lab determination of reproductive success of South Platte River fish species in relation to WQCD winter temperature standard
US Dept of Ag APHIS	\$27,854	Latchininsky, Alexandre		Ecosystem Science & Management	Wyoming Cooperative Agriculture Pest Survey

US Dept of Education	\$46,323	Carter, Joanna		Student Financial Aid	Student Educational Opportunity Grant 13-14
US Dept of Education	\$8,374	Carter, Joanna		Student Financial Aid	Pell Grant 13-14
US Dept of Energy	\$54,268	Deng, Min		Atmospheric Science	Evolution in Cloud Population Statistics of the MJO: from AMIE Field Observation to Global Cloud-Permitting Models
US Dept of Health and Human Services CMMS	\$35,100	Steiner, Joseph		Health Science Dean	Meaningful Use Funds To Improve Patient Care (Financial Reward for Converting to Electronic Health Records)
US Dept of Health and Human Services NIH	\$26,885	Wall, Daniel		Molecular Biology	Yr 3 Protein Exchange and Self Recognition in Myxobacteria Biofilms
US Dept of Health and Human Services NIH	\$28,256	Fay, David		Molecular Biology	Developmental Functions of Rb Family Proteins (Year 9)
US Dept of Health and Human Services NIH	\$209,760	Gomelsky, Mark		Molecular Biology	Bacteriophytochrome-based Optogenetic Tools for Mammalian Gene Regulation
US Dept of Interior BLM	\$4,411	Beck, Jeffrey		Ecosystem Science & Management	Identifying Disturbance Mechanisms Influencing Habitat Selection by Elk/Natural Gas Development Fields
US Dept of Interior USGS	\$8,453	Frick, Carl		Mechanical Engineering	Micro-Patterned Membrane Surfaces with Switchable Hydrophobicity Yr 2 of 2
US Dept of Interior USGS	\$16,895	Fan, Maohong		Chemical/Petroleum Engineering	The Use of Fe(VI) for the Improvement of Water Quality in Wyoming Yr 2 of 3
US Dept of Interior USGS	\$11,264	Cammack, Kristi		Animal Science	Ruman Microbial Changes Associated with High Sulfur Yr 1 of 2

US Dept of Interior USGS	\$13,560	Geerts, Bart		Atmospheric Science	Multi-frequency Radar and Precipitation Probe Analysis of the Impact of Glaciogenic Cloud Seeding on Snow Yr 3 of 3
US Dept of Interior USGS	\$27,163	Ewers, Brent		Botany	Decadal Scale Estimates of Forest Water Yield After Bark Beetle's Epidemics in Southern Wyoming Yr 3 of 3
US Nat'l Science Foundation	\$22,707	Leon, David		Atmospheric Science	Collaborative Proposal: Profiling of Winter Storms
US Nat'l Science Foundation	\$46,374	Bessaih, Hakima		Mathematics	Summer School at the UW: Stochastic Equations for Complex Systems: Theory and Applications
Utah State University	\$7,866	Geiger, Milton E		Cooperative Extension Services	Enhancing the Exploring Energy Efficiency and Alternatives (E3A) Curriculum
Various Sponsors	\$62,154	Kunkel, Paul		TransPark	Community Partner Match Contributions for ACTA Gem City Grand Pilot Bus Route
Various Sponsors	\$347	Kline, Jill		Wyoming Small Business Development Center	Vehicle Mileage Reimbursement
Various Sponsors	\$584	Kline, Jill		Wyoming Small Business Development Center	Vehicle Management
Various Sponsors	\$180	Clarke, Pamela		School of Nursing	Various Nursing Schools Program Development
Various Sponsors	\$338	Redder, Alan		Wyoming Natural Diversity Database	Database Management

Various Sponsors	\$1,055	Hamerlinck, Jeffrey		Wyoming Geographic Information Science Center	Spatial Data and Visualization Center
Wyoming Animal Damage Management Board	\$7,500	Mills, Kenneth W.		Veterinary Science	Rabies Surveillance 2011
Wyoming Coalition Against Domestic Violence and Sexual Assault	\$30,000	Selheim, Megan		VP-Student Affairs	Pilot Community Program: Community-Based Primary Sexual Violence Prevention Education
Wyoming Dept of Health	\$50,246	Cook, Tiffany		Wyoming Survey & Analysis Center	Evaluation of the State Public Health Actions to Prevent and Control Diabetes, Heart Disease, Obesity and Associated Risk Factors, and Promote School Health Grant
Wyoming Humanities Council	\$2,000	Garrison, Jean		International Studies	General Support for speaker series and graduate assistant
Wyoming State Parks and Cultural Resources	\$19,230	Peacock, Cheryl		Housing	2013 State Parks/Wyoming Conservation Corps projects
Wyoming Wild Sheep Foundation	\$9,450	Kauffman, Matthew		Zoology	Sublette Moose Project

TOTAL 3/2014	<u>\$903,540</u>
Total From 7/2013	\$7,704,125
Total From 8/2013	\$17,092,804
Total From 9/2013	\$6,727,785
Total From 10/2013	\$10,612,952
Total From 11/2013	\$3,510,742
Total From 12/2013	\$13,145,130
Total From 1/2014	\$3,052,336
Total From 2/2014	\$11,627,471
Total Year to Date	\$74,376,886

US Dept of Education	\$17,778,920	Carter, Joanna		Student Financial Aid	Direct Student Loan 12-13
US Dept of Education	\$41,629,607	Carter, Joanna		Student Financial Aid	Direct Student Loan 13-14

Total Institutional Awards	\$59,408,527
GRAND TOTAL	\$133,785,413

2. Committee of the Whole- CONSENT AGENDA

Personnel, Murdock

CHECK THE APPROPRIATE BOX(ES):

- Work Session
 Education Session
 Information Item
 Other Specify: Committee of the Whole (Consent Agenda)

A. Items for Action Recommended by the President

APPOINTMENTS

1. Faculty

It is recommended to the Trustees of the University of Wyoming that the following faculty appointments be approved as indicated.

College of Education

<u>Name</u>	<u>Rank</u>	<u>Salary</u>	<u>Appointment Begins</u>
-------------	-------------	---------------	---------------------------

Department of Professional Studies

Teman, Eric D.	Assistant Professor	\$60,432/AY	08/26/2014
-----------------------	---------------------	-------------	------------

Eric D. Teman received a B.S. (2004) in Business Administration, an M.S. (2006) in Applied Statistics and Research Methods, and a Ph.D. (2012) in Applied Statistics and Research Methods from the University of Northern Colorado. Dr. Teman also received a J.D. (2008) from the University of Denver. Dr. Teman has been a licensed Colorado attorney since 2008.

College of Health Sciences

<u>Name</u>	<u>Rank</u>	<u>Salary</u>	<u>Appointment Begins</u>
-------------	-------------	---------------	---------------------------

Division of Social Work

Baker, Amy B.	Instructor	\$60,000/AY	08/18/2014
----------------------	------------	-------------	------------

Amy Baker received a B.S.W. (2002) from Cairn University, a M.S.W. (2004) from the University of Pennsylvania, a Master of Philosophy, Social Welfare (2011), and a Ph.D. (expected 2014) in Social Welfare from CUNY Graduate Center at Hunter College. Dr. Baker has been a Director of Research and Development at SPARK Movement since 2012. The title of this tenure track position will convert to Assistant Professor upon receipt of an official transcript indicating completion of terminal degree.

Family Medicine Residency Program - Casper

Dunn, Mesha L.	Clinical Assistant Professor	\$90,000/FY	03/17/2014
-----------------------	------------------------------	-------------	------------

Mesha Dunn received a B.S. (2000) in Biology from Regis University, and a M.D. (2009) from the University of Sint Eustatius School of Medicine. Dr. Dunn has completed her residency at the University of Wyoming Family Medicine Residency Program in Casper.

WWAMI Medical Education Program

Doherty, Alison Clinical Assistant Professor \$80,892/AY 07/01/2014
Alison Doherty received a B.A. (2003) in Anthropology from the University of Wyoming, an M.A. (2007) in Biological Anthropology, and a Ph.D. (2013) in Cell and Molecular Biology from Kent State University. Dr. Doherty has been a Post-Doctoral Research Fellow at Colorado State University since 2013.

University Libraries

Name Rank Salary Appointment Begins

Collection Development

Macaulay, David Assistant Librarian \$48,000/FY 03/31/2014
David Macaulay received a B.A. (1986) in English Literature from the University of New Brunswick, and M.A. (1993) in Anthropology from McGill University, and an MLIS (2010) from McGill University School of Information Studies. Mr. Macaulay has been an Electronic Resources Librarian at Concordia University Libraries since 2011.

Tharp, Shannon Assistant Librarian \$47,004/FY 02/03/2014
Shannon Tharp received a B.A. (2005) in Journalism and English Writing from Drake University, an M.F.A. (2007) in Creative Writing and an M.L.I.S. (2013) from the University of Washington. Ms. Tharp has been an Archives Assistant at the University of Washington since 2010.

PROMOTIONS

1. Faculty

It is recommended to the Trustees of the University of Wyoming that the following faculty promotions be approved as indicated.

College of Agriculture and Natural Resources

Name New Rank
Department of Ecosystem Science and Management
Miller, Scott N. Professor

College of Arts & Sciences

Name New Rank
American Studies Program
Knobloch, Frieda E. Professor
Department of Anthropology
Ahern, James C. Professor
Department of Art
Hardy, Leah M. Professor

Department of Botany

Ewers, Brent E. Professor

Department of Criminal Justice

Freng, Adrienne Professor

Department of Geography

Gribb, William J. Professor

Department of Geology & Geophysics

Sims, Kenneth W. Professor

Department of History

Roberts, Philip J. Professor

Department of Physics & Astronomy

Brotherton, Michael S. Professor

Kobulnicky, Henry A. Professor

Department of Psychology

Gray, Matthew J. Professor

Gender and Women's Studies

Zare, Bonnie Sue Professor

College of Business

Name

New Rank

Department of Management and Marketing

Peterson, Christian Mark Professor

College of Education

Name

New Rank

Department of Secondary Education

Rush, Leslie S. Professor

College of Engineering and Applied Science

Name

New Rank

Department of Chemical & Petroleum Engineering

Fan, Maohong Professor

Department of Civil & Architectural Engineering

Urynowicz, Michael A. Professor

College of Health Sciences

<u>Name</u>	<u>New Rank</u>
<i>Family Medicine Residency Program - Casper</i>	
Radosevich, Thomas E.	Clinical Associate Professor
<i>School of Pharmacy</i>	
Nair, Sreejayan	Professor

College of Law

<u>Name</u>	<u>New Rank</u>
<i>Law Library</i>	
Person, Debora A.	Librarian

University Libraries

<u>Name</u>	<u>New Rank</u>
<i>Collection Development</i>	
Hert, Tamsen L.	Librarian

2. Academic Professionals

It is recommended to the Trustees of the University of Wyoming that the following promotions of academic professionals be approved as indicated.

College of Agriculture and Natural Resources

<u>Name</u>	<u>New Rank</u>
<i>Cooperative Extension Service</i>	
Edwards, Jeffrey M.	Associate Extension Educator

TENURE APPOINTMENTS WITH PROMOTION

It is recommended to the Trustees of the University of Wyoming that the following faculty be granted tenure with a promotion in rank.

College of Agriculture and Natural Resources

<u>Name</u>	<u>New Rank</u>
<i>Department of Agricultural and Applied Economics</i>	
Ritten, John P.	Associate Professor

John Ritten (Ph.D., Colorado State University) was appointed to the Agricultural and Applied Economics faculty in 2008. Originally located at the James C. Hageman Sustainable Agriculture Research and Extension Center in Lingle, WY, John transferred to campus in 2011 to take responsibility for the undergraduate Farm and Ranch Management Courses. He holds research, teaching, and extension responsibilities.

Department of Plant Sciences

Islam, Md Anowarul

Associate Professor

M. Anowarul Islam (Ph.D., University of Sydney, Australia) was appointed to the Plant Sciences faculty in 2008. Dr. Islam has received over \$479,000 in grant funding as principal investigator along with over \$1.5 million as co-principal investigator. He is a well-published researcher with 12 peer-reviewed publications in high impact journals, one refereed book chapter, 14 popular press articles, 7 refereed proceedings, and 76 extension publications since he arrived at the University of Wyoming. Dr. Islam teaches Forage Crop Science every year to both graduate and undergraduate students. He has supervised 6 graduate students since 2008 and served on 7 graduate committees. Dr. Islam's research and extension focus on improved forage production in the Mountain West region, including the development of new forage cultivars for local production systems and Wyoming Forage Field Days.

College of Arts & Sciences

Name

New Rank

Department of Anthropology

Murphy, Melissa S.

Associate Professor

Melissa Murphy (Ph.D., University of Pennsylvania, Philadelphia, PA) was appointed to the Anthropology faculty in 2008. Professor Murphy is a biological anthropologist/bioarchaeologist who teaches courses on food and nutrition cross-culturally and through time as well as on human osteology (the study of human skeletal materials) and forensic anthropology. An expert on the Incas and other groups of Peru, Dr. Murphy co-edited a book, *Enduring Conquests: Rethinking the Archaeology of Resistance to Spanish Colonialism in the Americas*. Other subjects in her publication record include diet, health, bone trauma and violence among peoples conquered by the Incas.

Department of Chemistry

Balaz, Milan

Associate Professor

Milan Balaz (Ph.D., University of Strasbourg, France) was appointed to the Chemistry faculty in 2008. Professor Balaz has received over \$214,000 in grant funding as principal investigator along with over \$7 million as co-principal investigator. He is a well-published researcher with 18 peer reviewed high impact publications since he arrived at the University of Wyoming. He teaches organic chemistry to both undergraduate and graduate students.

Lehmann, Teresa Erika

Associate Professor

Teresa Lehmann (Ph.D., University of Minnesota, Minneapolis, MN) was appointed to the Chemistry faculty in 2008. Professor Lehmann has received over \$1.13 million dollars at the University of Wyoming for her research which utilizes a major piece of equipment called an NMR, which is similar in many ways to the MRI used in medical diagnosis. Her publications often have medical implications. She teaches general chemistry to undergraduates and advanced courses in physical and quantum chemistry to graduate students.

Department of Geography

Minckley, Thomas A.

Associate Professor

Thomas Minckley (Ph.D., University of Oregon, Eugene, OR) was appointed to the Geography faculty in 2008. Professor Minckley has received over \$430,000 in grants during his time at the University of Wyoming. His areas of specialization include environmental change, biogeography and paleoecology in which he has extensively published often with research teams in a variety of fields. Dr. Minckley has taught courses for the life sciences program and for botany and geography at both undergraduate and graduate levels.

Department of Geology & Geophysics

Chen, Po

Associate Professor

Po Chen (Ph.D., University of Southern California, Los Angeles, CA) was appointed to the Geology and Geophysics faculty in 2008. Professor Po Chen serves as a participant in the School of Energy Resources in addition to his appointment in the Geology Department. He has 17 peer reviewed publications and nearly \$840,000 in grant funding during his time at the University of Wyoming. He teaches primarily at the graduate level on topics such as seismology, computers and the geosciences, and digital filtering.

Riebe, Clifford

Associate Professor

Clifford Riebe (Ph.D., University of California, Berkeley, CA) was appointed to the Geology & Geophysics faculty in 2008. A principle investigator who has received over \$1.5 million in grant funding, Professor Riebe publishes on earth surface processes such as erosion, weathering, and climate effects over time. He teaches a broad range of courses on geomorphology, physical geology, watersheds, and other geological topics relevant to Wyoming, nationally and internationally. Clifford Riebe (Ph.D., University of California, Berkeley, CA) was appointed to the Geology & Geophysics faculty in 2008. A principle investigator who has received over \$1.5 million in grant funding, Professor Riebe publishes on earth surface processes such as erosion, weathering, and climate effects over time. He teaches a broad range of courses on geomorphology, physical geology, watersheds, and other geological topics relevant to Wyoming, nationally and internationally.

Department of Mathematics

Williford, Jason S.

Associate Professor

Jason Williford (Ph.D., University of Delaware, Newark, DE) was appointed to the Mathematics faculty in 2009. Professor Williford teaches different levels of calculus, types of algebra, number and matrix theory, and combinatorics to all levels of math students. He also publishes in these areas in a variety of mathematical journals. He has been funded for organizing a special Rocky Mountain summer mathematics conference by the National Science Foundation.

Department of Music

Vanderborgh, Beth D.

Associate Professor

Beth Vanderborgh (Doctor of Musical Arts, University of Maryland, College Park, MD) was appointed to the Music faculty in 2008. Professor Vanderborgh teaches all levels of the cello, chamber music, baroque music and literature related to the string instruments. An accomplished performer, Professor Vanderborgh has participated in a number of recordings released by Albany records and by National Public Radio of Raleigh, NC. She has performed in concerts in various venues including Laramie, New York City, the Kennedy Center, the Smithsonian and France.

Department of Physics & Astronomy

Wang, Wenyong

Associate Professor

Wenyong Wang (Ph.D., Yale University, New Haven, CT) was appointed to the Physics and Astronomy faculty in 2008. Professor Wang has received \$7 million in grant funding since his arrival at the University of Wyoming. Among his research specialties are nanoparticles and nanostructures, a cutting edge area of twenty-first century science. He teaches in this area along with atomic and molecular physics, optical properties of solids, quantum mechanics, and physics relevant to the engineering sciences.

Department of Political Science

Garner, Andrew D.

Associate Professor

Andrew Garner (Ph.D., University of Mississippi, Oxford, MS) was appointed to the Political Science faculty in 2008. Professor Garner teaches courses at a variety of levels ranging from American and Wyoming government, a required course for all UW students, to public opinion, an advanced undergraduate and graduate class. Professor Garner has published refereed articles in journals focused on politics and policy, political behavior, and general social science.

Department of Psychology

Wilkowski, Benjamin M. Associate Professor

Benjamin Wilkowski (Ph.D., North Dakota State University, Fargo, ND) was appointed to the Psychology faculty in 2008. Professor Wilkowski has received nearly a half million dollars of grant funding and has published 19 refereed articles and book chapters during his time at the University of Wyoming. His subject matter includes the emotions of agreeableness, anger, revenge, interpersonal coldness, and aggression among others. He teaches research methods to undergraduate psychology majors as well as social psychology to beginning students as well as to masters and doctoral students.

Department of Sociology

Zajacova, Anna Associate Professor

Anna Zajacova (Ph.D., Princeton University, Princeton, NJ) was appointed to the Sociology faculty in 2009. Zajacova came to the University of Wyoming after completing a postdoctoral fellowship at the National Institute on Aging, NIH. As a social demographer in the area of health and illness, she has had a high level of grantsmanship as well as publication rate in her time at the university. She teaches undergraduate and graduate students in the areas of medical sociology, statistical methods and demography.

Department of Theatre & Dance

Jackson, Lawrence M. Associate Professor

Lawrence Jackson (Master of Fine Arts, Florida State University, Tallahassee, FL) was appointed to the Theatre & Dance Department faculty in 2008. Professor Jackson teaches different types of dance including jazz, modern, African, and African-American. He also is skilled in choreography, dance performance and partnering. His creative activities both at the University of Wyoming and elsewhere include both choreography and performance and many audiences have applauded his skills whether he or his students demonstrate them.

Gender and Women's Studies

Dewey, Susan C. Associate Professor

Susan Dewey (Ph.D., Syracuse University, Syracuse, NY) was appointed to the Gender and Women's Studies faculty in 2010. Dewey has a career total of seven books and many journal articles in her work which spans the globe. An expert on sex work and trafficking, her policy studies have broad implication for human rights and society. Her undergraduate courses range from research methods in the social sciences to women and the third world to gender and global change.

College of Education

Name

New Rank

Department of Educational Studies

Roxas, Kevin C. Associate Professor

Kevin Roxas (Ph.D., Michigan State University, 2008) was appointed to the Department of Educational Studies in the College of Education in 2008 as an Assistant Professor. During his employment at UW, he has developed and taught several teacher education and social foundations courses, provides local, regional, national, and international service to schools and local communities, and has published extensively in journals related to teacher education and teacher preparation. He has also formed productive working relationships with colleagues in schools, in other colleges of education, and in numerous professional organizations for teacher educators and teachers both nationally and internationally. His research focus is the contexts of reception for newcomer immigrant and refugee youth in public schools and in local communities.

Department of Professional Studies

Shepherd, Craig Associate Professor

Craig Shepherd (Ph.D., University of Georgia, 2008) was appointed to the Department of Professional Studies in 2008. His teaching, research, and service interests are related to technology use to facilitate learner-centered environments in formal and informal settings. He has developed and taught several courses for instructional

technology undergraduate, masters and doctoral students in these areas. He has also published numerous peer-reviewed research articles and book chapters and provided service in various local and national endeavors.

Department of Elementary & Early Childhood Education

Madrid, Samara Dawn Associate Professor

Samara Madrid (Ph.D. The Ohio State University 2007) was appointed to the Department of Elementary and Early Childhood Education in 2009. She teaches courses in early childhood education and conducts research examining the emotional lives of young children and teachers with a specific focus on gender and the school/peer culture. She has published numerous journal articles in leading international journals, book chapters, and has two co-edited books. She has a forthcoming edited book entitled, *Reframing the Emotional Worlds of Early Childhood Classrooms* that will be published by Routledge Press in 2014.

College of Engineering and Applied Science

Name

New Rank

Department of Chemical & Petroleum Engineering

Goual, Lamia Associate Professor

Lamia Goual (Ph.D., Imperial College) was first appointed in 2006 as a research scientist at EORI, and then in 2007 as an Assistant Professor in the Department of Chemical and Petroleum Engineering. Her expertise is in interfacial science and thermodynamics as applied to petroleum phase behavior and fouling, enhanced oil and gas recovery, sequestration of greenhouse gases, and remediation of contaminated aquifers.

Yin, Shunde Associate Professor

Shunde Yin (Ph.D., University of Waterloo) was appointed in 2008 as an Assistant Professor in the Department of Chemical and Petroleum Engineering. His expertise is computational geomechanics, with applications in subsurface energy extraction and carbon sequestration. He is the recipient of Don Stinson Outstanding Teacher Award in 2011, 2012 and 2013.

Department of Civil & Architectural Engineering

Brant, Jonathan A. Associate Professor

Jonathan Brant (Ph.D., University of Nevada, Reno) was appointed to the faculty of the Department of Civil and Architectural Engineering in 2008. Dr. Brant's research focuses on the development and implementation of new technologies and techniques for treating a range of source waters for beneficial uses. Example applications, using nanotechnology, include desalination, water reuse, drinking water, and oil and gas produced water management. Because of his focus on the optimization of membrane processes with regards to issues such as energy consumption, mitigation of membrane fouling, and concentrate or reject disposal, Dr. Brant was appointed as the Fetzner Faculty Fellow in 2013.

Department of Mechanical Engineering

Frick, Carl P. Associate Professor

Carl Frick (Ph.D., University of Colorado, Boulder) was appointed to the faculty of the Department of Mechanical Engineering in 2008. His expertise is in experimental materials science, with particular emphasis on shape-memory alloys. His past contributions and professional promise were recognized in 2013 with the National Science Foundation's CAREER Award, which is the most prestigious recognition given to young faculty members.

Sitaraman, Jayanarayanan Associate Professor

Jay Sitaraman (Ph.D., University of Maryland) was appointed to the faculty of the Department of Mechanical Engineering in 2009. His appointment is through the School of Energy Resources as an expert in aerodynamic modeling of wind turbines. Dr. Sitaraman is also a national expert in computational simulations of rotorcraft aerodynamics, which resulted in his bringing participation in one of three national Vertical Lift Centers of Excellence to UW.

College of Health Sciences

Name

New Rank

Division of Communication Disorders

Guiberson, Mark M.

Associate Professor

Mark M. Guiberson (Ph.D., Colorado State University) has been a member of the Division of Communication Disorders' faculty as an Assistant Professor since August 2011. He is in his third year at UW after serving a four year appointment as Assistant Professor at the University of Northern Colorado. Dr. Guiberson has published in highly respected journals to include 21 total peer-reviewed publications during his time in academics with 12 of those coming during his time at UW. He has received several internal research grants. He teaches both undergraduate and graduate students and has expanded his teaching to include the Wyoming Institute for Disabilities (WIND).

Division of Kinesiology and Health

Zhu, Qin

Associate Professor

Qin Zhu (Ph.D., Indiana University) joined the faculty in the Division of Kinesiology and Health in August 2008. Dr. Zhu has published his work in motor behavior as single or lead author in 9 highly respected peer-reviewed journals and one refereed book chapter. He has made 20 national or international presentations. He has received several internal grants and is pursuing external funding to support his research. He teaches motor learning and control to both undergraduate and graduate students.

School of Nursing

Purtzer, Mary Ann

Associate Professor

Mary Anne Purtzer (Ph.D., RN University of Wyoming) has been a member of the Fay W. Whitney School of Nursing faculty since August 2008. Prior to her joining UW, she held several positions with the Wyoming Department of Health. She has published her work in 5 highly respected peer-reviewed journals and she has received several internal grants to support her research. She was the recipient of the UW College of Health Sciences Inter-Professional Teaching and Research Award in 2013. She teaches undergraduate and graduate students.

Wyoming Institute for Disabilities

Jarman, Michelle

Associate Professor

Michelle Jarman (Ph.D., University of Illinois at Chicago) has been a member of the Wyoming Institute for Disabilities (WIND) faculty as an assistant professor since August 2007. She came to the University of Wyoming from the University of Illinois at Chicago where she was the Director of Academic Planning at the Urban Allied Health Academy. Dr. Jarman has published her work from UW in 8 highly respected peer-reviewed journal publications and 3 refereed book chapters and she has made 11 national presentations. She is co-editor of an upcoming special issue of Disability Studies Quarterly, an honor reserved for those considered top scholars in disabilities. She teaches courses disability studies primarily to undergraduate students.

College of Law

Name

New Rank

Kalen, Sam

Professor

Sam Kalen (JD, Washington University) joined the University of Wyoming College of Law faculty in 2009, as an assistant professor of law. Professor Kalen comes to UW after practicing in Washington, D.C. for over 20 years. He practiced at an energy, environment and natural resources law firm, and worked in the Solicitor's Office at the Department of the Interior. He also has held various teaching positions at the University of Baltimore, Florida State University, Washington & Lee University, and Penn State University. Immediately after law school, Professor Kalen began his career as a law clerk for Justice Warren D. Welliver of the Missouri Supreme Court. Professor Kalen

research focuses on the fields of energy, environment, public lands and natural resources, administrative law, and constitutional law. Professor Kalen also is active in the American Bar Association's Section on Environment, Energy, and Resources, having served as a Chair of two committees and Vice-Chair on several committees.

TENURE APPOINTMENTS

It is recommended to the Trustees of the University of Wyoming that the following faculty be granted tenure with no change in rank.

College of Engineering and Applied Science

Name

Rank

Department of Chemical & Petroleum Engineering

Holles, Joseph

Associate Professor

Joseph Holles (Ph.D., University of Virginia) was appointed in 2010 as an Associate Professor in the Department of Chemical and Petroleum Engineering. His expertise includes heterogeneous catalysis with broad applications in the energy sector. The goal of this work is extend nanoscale material design concepts from theoretical computational studies to real world catalytic materials. This includes catalyst synthesis, characterization, and reactivity studies in the laboratory together with additional characterization at national laboratory facilities. Applications of his work include upgrading natural gas to liquid fuels and converting agricultural waste to hydrogen or liquid fuels.

Department of Mechanical Engineering

Han, Chung-Souk

Associate Professor

Chung-Souk Han (Ph.D., University of Hannover) was appointed to the faculty of the Department of Mechanical Engineering in 2010 after five years of experience at North Dakota State University. His expertise is in the area of polymer mechanics, which he pursues through both modeling and experiments. Dr. Han's contributions were recognized by his winning the National Science Foundation's CAREER Award, which is the most prestigious recognition given to young faculty members.

TENURE-TRACK REAPPOINTMENTS

It is recommended to the Trustees of the University of Wyoming that the following tenure-track faculty be reappointed in probationary positions.

College of Agriculture and Natural Resources

Name

Rank

Review Year

Department of Agricultural and Applied Economics

Hansen, Kristiana M.

Assistant Professor

4

Department of Ecosystem Science and Management

Hufford, Kristina M.

Assistant Professor

4

Murphy, Melanie A.

Assistant Professor

4

Department of Family & Consumer Sciences

Wade, Christine E.

Assistant Professor

5

Department of Molecular Biology

Bowman, Grant R.	Assistant Professor	2
Gatlin, Jesse C.	Assistant Professor	4
Gigley, Jason P.	Assistant Professor	2
Levy, Daniel L	Assistant Professor	3

Department of Plant Sciences

Dhekney, Sadanand A.	Assistant Professor	2
Garcia y Garcia, Axel	Assistant Professor	5
Mealor, Brian	Assistant Professor	5
Norton, Urszula	Assistant Professor	5

Department of Veterinary Sciences

Adamovicz, Jeffrey J	Assistant Professor	3
Miller, Myrna M.	Assistant Professor	4
Schumaker, Brant A.	Assistant Professor	4

College of Arts & Sciences

<u>Name</u>	<u>Rank</u>	<u>Review Year</u>
<i>American Studies Program</i>		
Adelt, Ulrich	Assistant Professor	5
Soto, Lilia M.	Assistant Professor	4
<i>Department of Anthropology</i>		
Toohy, Jason Leigh	Assistant Professor	3
<i>Department of Art</i>		
Baumbach, Diana L.	Assistant Professor	5
Shadwell, Shelby K.	Assistant Professor	5
Sailor, Rachel	Assistant Professor	4
<i>Department of Chemistry</i>		
Leonard, Brian M.	Assistant Professor	4
Varga, Krisztina	Assistant Professor	3
<i>Department of Communication & Journalism</i>		
Landreville, Kristen D.	Assistant Professor	4
Li, Li	Assistant Professor	2

Department of English

Baskin, Jason	Assistant Professor	3
Fitch, Andrew J.	Assistant Professor	5
Forbes, Erin	Assistant Professor	4
Obert, Julia C	Assistant Professor	3
Pafunda, Danielle M.	Assistant Professor	4
Thompson, Jason C.	Assistant Professor	5

Department of Geography

Chen, Yi-Ling	Assistant Professor	5
Legleiter, Carl	Assistant Professor	5

Department of Geology & Geophysics

McElroy, Brandon J.	Assistant Professor	2
----------------------------	---------------------	---

Department of History

Helfgott, Isadora A.	Assistant Professor	5
Laegreid, Renee M	Associate Professor	5
Poblete, JoAnna U.	Assistant Professor	5

Department of Mathematics

Liu, Rongsong	Assistant Professor	5
----------------------	---------------------	---

Department of Mathematics

McAllister, Tyrrell B.	Assistant Professor	5
Niu, Zhuang	Assistant Professor	3

Department of Modern & Classical Languages

Alexandrova, Ekaterina	Assistant Professor	2
Checa-Garcia, Irene	Assistant Professor	2
Domenech, Concepcio (Conxita)	Assistant Professor	3
Steele, Rebecca E.	Assistant Professor	5

Department of Music

McGee, Blake A.	Assistant Professor	4
Meredith, Scott A	Assistant Professor	5
Wu, Chi-Chen	Assistant Professor	2

Department of Physics & Astronomy

Jang-Condell, Hannah	Assistant Professor	3
Myers, Adam D	Assistant Professor	3

Department of Political Science

Aiken, Nevin T.	Assistant Professor	4
Oxley, Douglas R	Assistant Professor	2

Department of Psychology

Clapp, Joshua D. Assistant Professor 2

Department of Sociology

Painter, Matthew A. Assistant Professor 4

Department of Theatre & Dance

Sorensen, Shaun D. Assistant Professor 3

Department of Zoology & Physiology

Carling, Matthew D. Assistant Professor 3

Cherrington, Brian D. Assistant Professor 3

Dillon, Michael E. Assistant Professor 5

Goheen, Jacob R. Assistant Professor 5

Prather, Jonathan Assistant Professor 5

Pratt, Kara G. Assistant Professor 3

Global and Area Studies Program

Henne, Adam P. Assistant Professor 5

Seitz, Thomas R. Assistant Professor 5

Watson, Marcus D. Assistant Professor 4

Religious Studies Program

DeNapoli, Antoinette E. Assistant Professor 4

Raddaoui, Ali H Associate Professor 5

College of Business

<u>Name</u>	<u>Rank</u>	<u>Review Year</u>
<i>Department of Accounting</i>		
Sims, James E	Assistant Professor	2
<i>Department of Economics & Finance</i>		
Beracha, Eli	Assistant Professor	5
Choi, Nicole Y.	Assistant Professor	5
Gilbert, Benjamin T.	Assistant Professor	2
Gogineni, Sridhar	Assistant Professor	2
Skiba, Alexandre	Assistant Professor	4
Skiba, Hilla Maaria	Assistant Professor	4
<i>Department of Management & Marketing</i>		
Arnette, Andrew N.	Assistant Professor	2
Brewer, Barry L.	Assistant Professor	3
Cooper, Joseph T.	Assistant Professor	5

College of Education

<u>Name</u>	<u>Rank</u>	<u>Review Year</u>
<i>Department of Educational Studies</i>		
Shim, Jenna M.	Assistant Professor	4
<i>Department of Professional Studies</i>		
Haines McKim, Courtney A	Assistant Professor	3
Holt, Kara L.	Assistant Professor	4
Hvidston, David J	Assistant Professor	3
<i>Department of Secondary Education</i>		
Burrows, Andrea C.	Assistant Professor	3
Haynes, James C.	Assistant Professor	3
<i>Dept. of Elementary & Early Childhood Education</i>		
Forrester, Jennifer H.	Assistant Professor	4
Han, Keonghee Tao	Assistant Professor	4
Houseal, Anne K	Assistant Professor	3
Mielke, Tammy L.	Assistant Professor	3
Robertson, Dana A	Assistant Professor	2

College of Engineering and Applied Science

<u>Name</u>	<u>Rank</u>	<u>Review Year</u>
<i>Department of Atmospheric Science</i>		
Murphy, Shane M	Assistant Professor	2
<i>Department of Chemical & Petroleum Engineering</i>		
Li, Dongmei (Katie)	Assistant Professor	3
Oakey, John S.	Assistant Professor	4
<i>Department of Civil & Architectural Engineering</i>		
Ng, Kam Weng	Assistant Professor	2
Ohara, Noriaki	Assistant Professor	2
Tan, Gang	Assistant Professor	4
Zhu, Jianting	Associate Professor	2
<i>Department of Computer Science</i>		
Banic (Ulinski), Amy C.	Assistant Professor	3
<i>Department of Electrical and Computer Engineering</i>		
Duan, Dongliang	Assistant Professor	2
<i>Department of Mechanical Engineering</i>		
Stoellinger, Michael K	Assistant Professor	2
Zheng, Yuan	Assistant Professor	5

College of Health Sciences

<u>Name</u>	<u>Rank</u>	<u>Review Year</u>
<i>Division of Communication Disorders</i>		
Petersen, Douglas B.	Assistant Professor	5
<i>Division of Kinesiology and Health</i>		
Dai, Boyi	Assistant Professor	2
Lux Gaudreault, Karen M.	Assistant Professor	3
Porter, Christine M.	Assistant Professor	4
Readdy, Ryan T.	Assistant Professor	4
<i>Division of Social Work</i>		
Mahapatra, Neely	Assistant Professor	4
Thompson-Ebanks, Valerie	Assistant Professor	2
<i>School of Nursing</i>		
Thomas, Jenifer Jo	Assistant Professor	4
<i>School of Pharmacy</i>		
Brown, Travis E.	Assistant Professor	2
Staubach, Lawrence B.	Assistant Professor	2
Thyagarajan, Baskaran	Assistant Professor	3

College of Law

<u>Name</u>	<u>Rank</u>	<u>Review Year</u>
Chestek, Kenneth D	Assistant Professor	2
Jackson, Darrell D	Assistant Professor	2

EXTENDED-TERM APPOINTMENTS WITH PROMOTION

1. Faculty

It is recommended to the Trustees of the University of Wyoming that five-year extended-term appointments with promotion in rank for the following faculty be approved as indicated.

University Libraries

<u>Name</u>	<u>New Rank</u>	<u>Extended Term Number</u>
Hutchens, Chad E.	Associate Librarian	1

Chad Hutchens (MLS, University of Texas at Austin) was appointed to the UW Libraries faculty in 2008 as an Electronic Resources Librarian. In 2013 he was appointed as the Head of the Digital Collections Office within the UW Libraries. He has been involved with the National Information Standards Organization (NISO) since 2010 and in 2013 he was invited to co-chair the NISO's KBART Working Group (KBART is an internationally recognized

metadata holdings format used by publishers worldwide). Over the past 4 years he has authored numerous articles and presented at national conferences highlighting the importance of standardized electronic holdings metadata on behalf of NISO and the University of Wyoming Libraries.

Coe Reference Department

Kvenild, Cassandra M. Associate Librarian 1

Cassandra Kvenild (MLIS, University of Washington) was appointed assistant librarian in 2008. She is co-editor of two books: *Embedded Librarians: Moving beyond one-shot instruction* and *The Embedded Librarians Cookbook*. In 2011, she received the Routledge Distance Learning Librarianship Award, a national award in recognition of service to distance learning. During her time at UW, Cass has authored multiple peer reviewed articles and delivered several invited talks. She chairs the editorial board of the journal *College & Research Libraries News*. Cass formerly served as the distance learning librarian for the Outreach School at UW, and she is currently head of the Learning Resource Center located in the College of Education.

2. Academic Professionals

It is recommended to the Trustees of the University of Wyoming that six-year extended-term appointments with promotion in rank for the following academic professionals be approved as indicated.

College of Agriculture and Natural Resources

<u>Name</u>	<u>New Rank</u>	<u>Extended Term Number</u>
-------------	-----------------	-----------------------------

Cooperative Extension Service

Malcolm, Alexander M. Senior Extension Educator 3

Alex Malcolm (M.S. Montana State University) started with UW Extension as Assistant University Extension Educator in 1998 with responsibility for agriculture, horticulture, and 4-H in Fremont County. He now provides leadership for the 4-H youth program in Fremont County and the county horticulture program. Malcolm manages a large 4-H program with over 550 youth and 180 adult volunteer leaders. Malcolm has presented over 400 educational programs in Fremont County and invited presentation across Wyoming. He participated in Wyoming LEAD in 2012. He served as principal investigator from 2006 – 2009 for the Federally Recognized Tribes Extension Program on the Wind River Indian Reservation with grant funds of over \$95,000 each year.

Mealor, Rachel D. Associate Extension Educator 1

Rachel Mealor (B.S. and M.S. University of Wyoming) assumed the position of Extension Range Specialist in the Department of Ecosystem Science and Management in 2008. Mealor provides statewide leadership for rangeland ecology education, working with the Sustainable Management of Rangeland Resources Initiative Team. She is the principal investigator of grants totaling \$47,085 and over \$178,797 as co-principal investigator. She has authored or co-authored nine Extension bulletins and nine refereed journal articles. She has been an invited presenter for 42 educational programs across Wyoming.

Willis, Kentz Assistant Extension Educator 1

Kentz Willis (M.S. University of Wyoming) joined UW Extension August 2008 as an area nutrition and food safety University Extension Educator based in Sheridan. Willis provides nutrition and food safety educational programs in Northeast Wyoming including Sheridan, Johnson, Campbell, Crook and Weston Counties. In the past year he reached over 800 adults and youth through his programs. He has received \$19,475 as principal investigator to create a Wyoming Specialty Crops and Local Food Guide to enhance relationships between local growers and consumers in Wyoming. Also as a team member, he received \$95,700 in funding from the USDA Risk Management Agency to train agriculturists in the Billings, Montana area. He is author of three peer reviewed publications. Willis is the immediate

past chair of the UW Extension Nutrition and Food Safety Initiative Team where he provided leadership for the team education program and training budget, and served as a member of the Extension State Coordinating Committee.

College of Arts & Sciences

<u>Name</u>	<u>New Rank</u>	<u>Extended Term Number</u>
-------------	-----------------	-----------------------------

Department of Art

Kikut, Patrick A.	Associate Lecturer	1
--------------------------	--------------------	---

Patrick Kikut (MFA, University of Montana) was appointed to the Art faculty in 2008. Kikut teaches many foundational courses in art such as color theory, and the painting sequence. His art has been exhibited in many venues especially in Wyoming and the West. He has exhibited and been in residence at Ucross, a prestigious foundation and center for visiting artists and writers. He recently received a grant from the UW Berry Center.

Department of Botany

Lyford, Mark E.	Senior Lecturer	2
------------------------	-----------------	---

Mark Lyford (Ph.D., University of Wyoming) was appointed to the Botany faculty in 2008. Lyford directs the Life Sciences Program, a biological sciences program which integrates biology curricula in the Colleges of Arts and Sciences, Health Sciences, and Agriculture and Natural Resources. Lyford teaches a variety of courses which encourage students to explore current issues in biology. He has presented at many conferences about science teaching and is known for his participation at many meetings with Wyoming community college and K-12 teachers.

Department of Geography

Hamerlinck, Jeffrey D.	Senior Research Scientist	4
-------------------------------	---------------------------	---

Jeff Hamerlinck (Ph.D., University of Colorado, Boulder) was appointed as an Associate Research Scientist for WYGISC in 1994 and to the Geography faculty in 1998. Hamerlinck teaches courses in geographic information sciences, map use and analysis, land use in Wyoming and the West, and other courses related to his field of expertise. He presented five papers at conferences in 2012-13 and published one refereed article. He has received grants related to Wyoming and the West and serves on state, regional, national, and university advisory boards and committees.

Department of Mathematics

Selden, Jeffrey Lee	Associate Lecturer	1
----------------------------	--------------------	---

Jeffrey Selden (Ph.D., University of Arizona) was appointed to the Mathematics faculty in 2009. Selden teaches courses in calculus, linear algebra, complex analysis, partial differential equations, differential geometry, the theory of probability, and many more. He received a college award for "extraordinary merit in teaching" in 2011. He has attended many national and international conferences in his research area as well as chairing the undergraduate committee in the Mathematics department.

Department of Modern and Classical Language

De Lozier, Laura	Senior Lecturer	2
-------------------------	-----------------	---

Laura DeLozier (Ph.D., University of Wisconsin-Madison) was appointed to the Modern and Classical Languages faculty in 2006. She teaches Greek, Latin, and courses in the Classics. She serves as Classics section coordinator as each different language in her department has a section organizer or coordinator. In addition to attending and presenting work at many seminars in her field, DeLozier serves on the college scholarship committee and on the steering committee of the UW Humanities Institute.

Department of Music

Sinift, Sherry L. Associate Lecturer 1

Sherry Sinift (MM, Indiana University) was appointed to the Music faculty in 2010. Sinift teaches the violin. For many years, she has served as the director of the string academy of Wyoming. For her recent professional development leave, she was a visiting assistant professor at the Sunderrman Conservatory of Gettysburg College. Her expertise also includes violin and viola pedagogy. She has performed in many venues including most recently with the Cheyenne Symphony Orchestra.

Department of Zoology & Physiology

Skinner, Margaret J. Senior Lecturer 2

Margaret Skinner (Ph.D., University of Witwatersrand Medical School) was appointed to the Zoology faculty in 2006. Currently Flannigan Skinner is the director of the Ellbogen Center for Teaching and Learning, a campus-wide resource for faculty and student which offers programs to enhance teaching and learning. This is a full-time administrative appointment. Prior to taking this position, Flannigan Skinner taught courses in human physiology and writing in biology. Before her recent development of presentations based in critical thinking and its assessment, she was a researcher in the area of sleep and sleep disorders.

College of Engineering and Applied Science

Name New Rank Extended Term Number

Department of Computer Science

Buckner, Kim Associate Lecturer 1

Kim Buckner (Ph.D., University of Tennessee) was appointed to the Department of Computer Science in 2008. Dr. Buckner has taught ten courses and developed one new course that has become a core course in the computer science curriculum. He serves as a member of the Association of Computing Machinery and the Special Interest Group on Computer Science Education.

College of Health Sciences

Name New Rank Extended Term Number

Division of Communication Disorders

Ross, Catherine L. Associate Lecturer 1

Catherine L. Ross, M.S., CCC-SLP (M.S., University of Wyoming) has served as an Assistant Lecturer of the Division of Communication Disorders faculty since August 2008. She supervises graduate students in clinical practicum and teaches two undergraduate courses, Clinical Methods and Clinical Observation. She has 18 years of experience as a speech-language pathologist in educational and medical settings. Catherine has 1 co-authored peer-reviewed publication, 1 co-authored book chapter, and 9 presentations to state, regional, and national associations. Catherine has contributed to regional and national associations as a convention planning chair and committee member. She has served as president and board member of the Wyoming Speech-Language-Hearing Association and was recently awarded Honors of the Association. Catherine has been very active in development activities at the unit and college level.

Division of Social Work

Dole-Izzo, Elizabeth S.

Associate Lecturer

1

Elizabeth Dole-Izzo (MSW, Colorado State University) was appointed to the Division of Social Work faculty in 2006 and appointed as Director of Field Education in 2010. Ms. Dole-Izzo has taken a leadership position in the academic and administrative functions of the Division, including implementation of a new competency-based curriculum and a complete restructuring of the field education program to meet evolving national accreditation standards. She has extensive practice experience as a medical social worker, as a case manager with the homeless, victims of domestic abuse and sexual assault, and as a leader in agencies and communities doing program and policy development. Since joining the UW faculty, she received the "Greatest Contribution to Social Work Practice Award" from the National Association of Social Workers-Wyoming, and has been recognized for her excellence in teaching and service. In addition to growing and managing a diverse field education program that meets the learning needs of social work students and the needs of social service agencies in Wyoming, she also teaches practice seminars in the undergraduate and graduate programs.

School of Nursing

Raska, Kimberly A

Associate Lecturer

1

Kimberly Raska, R.N. (M.S., FNP, University of Wyoming) joined the Fay W. Whitney School of Nursing as an Assistant Instructor in August 2011 after serving on the Nursing faculty at Laramie County Community College for eight years. In 2001 she was inducted into Sigma Theta Tau International. Kimberly supervises students in clinical practicum, including their senior capstone experiences. She teaches courses in developmental influences on health and nursing care of the young family. Kimberly is very active in professional and community services activities and is a member of a number of school and college committees.

College of Law

Name

New Rank

Extended Term Number

Playton, Dona

Senior Lecturer

1

Dona Playton (J.D., University of Wyoming) has been teaching at the College of Law since 1999. She developed the courses she teaches, including Domestic Violence Law, Children and the Law, and the Domestic Violence Legal Assistance Project, a legal trial clinic at the law school that opened in 2002 that allows third-year law students to represent low income victims of domestic violence, sexual assault and stalking throughout Wyoming. She has authored several publications including a domestic violence bench book used by Wyoming judges, a Women's Law Handbook published by the Wyoming Commission on Women's Issues, numerous articles and presentations on violence against women, child advocacy and family law issues. She has been appointed to numerous state boards and associations including the Access to Justice Commission, the Children's Justice Project, and the Children's Trust Fund. Ms. Playton is also nationally certified by the National Association of Counsel for Children and the Wyoming State Bar as a Child Welfare Law Specialist and also received a Certificate of Completion for Professional Mediation Training and Advanced Family Law Mediation.

EXTENDED-TERM APPOINTMENTS

1. Faculty

It is recommended to the Trustees of the University of Wyoming that five-year extended-term appointments with no promotion in rank for the following faculty be approved as indicated.

University Libraries

<u>Name</u>	<u>Rank</u>	<u>Extended Term Number</u>
Goldenstein, Cheryl E.	Associate Librarian	2
<i>Acquisitions</i>		
Barstow, Sandra M.	Librarian	5
<i>Coe Reference Department</i>		
Phillips, Lori J.	Associate Librarian	4
<i>Research & Instruction</i>		
Garcia, Jenny L.	Associate Librarian	2
Kruger, David D.	Associate Librarian	3

2. Academic Professionals

It is recommended to the Trustees of the University of Wyoming that six-year extended-term appointments with no promotion in rank for the following academic professionals be approved as indicated.

Academic Affairs

<u>Name</u>	<u>Rank</u>	<u>Extended Term Number</u>
<i>School of Environment & Natural Resources</i>		
Korfanta, Nicole	Associate Lecturer	2

College of Agriculture and Natural Resources

<u>Name</u>	<u>Rank</u>	<u>Extended Term Number</u>
<i>Cooperative Extension Service</i>		
Chapman, Kimberly	Assistant Extension Educator	1
Feuz, Bridger M.	Senior Extension Educator	2
Horn, Blaine E.	Senior Extension Educator	3
Sanchez, Dawn M.	Senior Extension Educator	3
Schamber, Robin A.	Associate Extension Educator	1

College of Arts & Sciences

<u>Name</u>	<u>Rank</u>	<u>Extended Term Number</u>
<i>Department of Chemistry</i>		
Goodson, Patricia A.	Senior Lecturer	3
<i>Department of Criminal Justice</i>		
Burnett, Cheryl C.	Senior Lecturer	3
<i>Department of Music</i>		
McKeage, Kathleen M.	Senior Lecturer	4

College of Engineering and Applied Science

<u>Name</u>	<u>Rank</u>	<u>Extended Term Number</u>
<i>Department of Atmospheric Science</i>		
Burkhart, Matthew D.	Research Scientist	3
<i>Department of Computer Science</i>		
Anderson, Allyson J.	Senior Lecturer	3

College of Health Sciences

<u>Name</u>	<u>Rank</u>	<u>Extended Term Number</u>
<i>School of Nursing</i>		
Miller, Holly E.	Senior Lecturer	3

EXTENDED-TERM-TRACK REAPPOINTMENTS

1. Faculty

It is recommended to the Trustees of the University of Wyoming that probationary, one-year reappointments for the following extended-term-track faculty be approved as indicated.

Academic Affairs

<u>Name</u>	<u>Rank</u>	<u>Review Year</u>
<i>American Heritage Center</i>		
Christopherson, Emily J	Assistant Archivist	2
Dreyer, Rachael	Assistant Archivist	3
Stow, Amanda M.	Assistant Archivist	2

University Libraries

<u>Name</u>	<u>Rank</u>	<u>Review Year</u>
Visnak, Kelly	Assistant Librarian	3
<i>Coe Reference Department</i>		
Proctor, Julia	Assistant Librarian	2

2. Academic Professionals

It is recommended to the Trustees of the University of Wyoming that probationary, one-year reappointments for the following extended-term-track academic professionals be approved as indicated.

Academic Affairs

<u>Name</u>	<u>Rank</u>	<u>Review Year</u>
<i>Art Museum</i>		
Crawford, Nicole M.	Assistant Lecturer	5
Miller, Rachel M.	Assistant Research Scientist	5

College of Agriculture and Natural Resources

<u>Name</u>	<u>Rank</u>	<u>Review Year</u>
<i>Agricultural Experiment Station</i>		
Zalesky, Douglas D	Assistant Research Scientist	3
<i>Cooperative Extension Service</i>		
Edwards, Jeffrey M.	Associate Extension Educator	5
Garrelts, Ashley	Assistant Extension Educator	5
Ibarra, Josefina	Assistant Extension Educator	5
Jacobsen, Jennifer L.	Assistant Extension Educator	5
Kuipers, Tara L.	Associate Extension Educator	5
Russell, Justina	Assistant Extension Educator	3
Saenz, Diane	Assistant Extension Educator	4
Sebade, Brian	Assistant Extension Educator	3
Smith, Mae	Assistant Extension Educator	3
Swanborn, Hannah	Assistant Extension Educator	2
<i>Department of Agricultural and Applied Economics</i>		
Lee, Brian P	Research Scientist	2

Department of Ecosystem Science and Management

Cook, Craig Assistant Research Scientist 3

Department of Family & Consumer Sciences

Bardsley, Melissa M. Assistant Extension Educator 3

Department of Plant Sciences

Hilgert, Christopher L Assistant Extension Educator 4

College of Arts and Sciences

Name Rank Review Year

American Studies Program

Graham, Andrea M Assistant Research Scientist 4

Department of Art

Jones, David L Assistant Research Scientist 3

Department of Botany

Wright, Brianna R Assistant Lecturer 4

Department of Criminal Justice

Stone, Shane T Assistant Lecturer 2

Department of English

Fisher, Richard R. Assistant Lecturer 4

Kirkmeyer, Jason S. Assistant Lecturer 4

Department of Geography

Albeke, Shannon E. Assistant Research Scientist 4

Department of Geology & Geophysics

Dewey, Janet C Assistant Research Scientist 3

Department of History

Logan, Barbara E. Assistant Lecturer 5

Department of Mathematics

Clements, Nathan P Assistant Lecturer 2

Department of Modern & Classical Languages

Heinz, Petra Assistant Lecturer 2

Lavanchy, Jennifer Diane Assistant Lecturer 4

Sohier, Benedicte Pia Assistant Lecturer 5

Department of Music

Williamson, Brad A. Assistant Lecturer 5

Department of Philosophy

Colter, Robert S. Assistant Lecturer 4

Department of Psychology

Clapp, Tara K Assistant Lecturer 2

Department of Statistics

Crawford, Scott D. Assistant Lecturer 2

Department of Theatre & Dance

Robertson Sorensen, Ginger K. Assistant Lecturer 2

Religious Studies Program

Fall, Tyler S. Assistant Lecturer 2

Keller, Mary L. Assistant Lecturer 4

College of Education

Name Rank Review Year

Department of Educational Studies

Burant, Theresa J. Assistant Lecturer 3

Department of Secondary Education

Thompson, Rodrick A. Assistant Lecturer 5

Dept. of Elementary & Early Childhood Education

Baldwin, Nikki A. Assistant Lecturer 5

College of Engineering and Applied Science

Name Rank Review Year

Department of Civil & Architectural Engineering

Gardzelewski, Jon A. Assistant Lecturer 4

College of Health Sciences

Name Rank Review Year

Division of Social Work

Cutts, Bethany A. Assistant Lecturer 3

School of Pharmacy

Bruch, David C Assistant Lecturer 2

Outreach School

Name

Rank

Review Year

Outreach Credit Programs

Boggs, Christine N.

Assistant Lecturer

5

GLOSSARY OF PERSONNEL TERMS

Academic Professional

Person other than faculty, engaged primarily in activities that extend and support the teaching, research, extension, and service missions of the University. There are four categories of academic professional: Extension Educators, Lecturers, Research Scientists, Post-Doctoral Associates. Individuals belonging to any of the first three categories can hold extended-term-track appointments under certain conditions.

Academic-Year (AY) Appointments

Appointments in which the regular period of employment includes the fall and spring semesters (nine months) of each year, with no accrual of vacation leave. Most faculty members and academic professionals hold AY appointments. AY employees typically receive their nine-month salaries and benefits spread out over the 12 months of each calendar year.

Adjunct Faculty

An adjunct appointment is the appointment of an individual to an academic unit that recognizes special discipline-related expertise but carries no financial obligation per se. Adjunct appointments can include qualified non-academic personnel or faculty with other academic affiliations. Adjunct appointments carry no rights to remuneration, tenure, or employment-related privileges and are normally for three years, with renewal possible.

Archives Faculty

This special faculty designation is reserved for archivists of the American Heritage Center. Archivists are responsible for acquiring original resource material to support academic research and teaching, organizing the material physically and intellectually, and teaching faculty, students and others to use these materials. There are three archivist ranks: Assistant Archivist, Associate Archivist, Archivist.

Assistant Professor

Indicates tenure-track appointments of individuals who hold the terminal degree in their discipline. This is the usual entry-level faculty rank.

Associate Professor

In addition to the qualifications of an Assistant Professor, Associate Professors have established a strong reputation in scholarship and teaching. Generally, faculty hired as Assistant Professors are promoted to the rank of Associate Professor at the time tenure is granted.

Clinical Faculty

Clinical faculty appointments allow experts in health-related fields to contribute to the training of UW students in allied disciplines. Clinical appointments are for at most one year at a time and carry no rights to tenure or extended terms. Clinical faculty members may be salaried members of the UW faculty, in which case their reappointment is subject to annual performance reviews. There are also adjunct clinical faculty appointments, which typically involve health-care professionals whose normal employment is outside the university. Adjunct clinical appointments carry no financial commitment from the University.

Emeritus Faculty

Tenured faculty who retire after long and distinguished service are eligible for emeritus status upon their retirement. The designation is honorary and carries no necessary commitment of space or remunerative employment. By analogy, extended-term academic professionals may be eligible for emeritus status upon retirement. (Emeritus=masculine, emerita=feminine, emeriti=plural)

Extended-Term Appointment

Academic professionals who have successfully completed probationary terms (usually six years) may receive six-year appointments called extended-term appointments. The term also applies to certain librarians and archivists who hold faculty status. These employees are eligible for extended-term appointments after five-year probationary periods. Extended terms for these employees are five years in length. Academic professionals, librarians, and archivists who are in the probationary period are on the extended-term-track.

Extension Educator

These academic professionals provide non-credit education to off-campus clientele through UW's Cooperative Extension Service. There are three ranks of Extension Educators: Assistant Extension Educator, Associate Extension Educator, Senior Extension Educator. All Extension Educators are in the College of Agriculture.

Faculty

Members of the permanent faculty include tenured or tenure-track Assistant Professors, Associate Professors, and Professors. Also included are tenure-track individuals who hold the rank of Instructor while completing their terminal degrees. Librarians and archivists also hold faculty status. They are eligible for extended terms instead of tenure.

Fiscal-Year (FY) Appointments

Appointments in which the regular period of employment is the entire calendar year, with accrual of annual vacation leave. Faculty members who hold administrative positions with summer responsibilities often have FY appointments for the duration of their administrative terms.

Full-Time Equivalent (FTE)

A measure of the time commitment expected of an employee or a set of employees. For example, two full-time employees or four half-time employees constitute 2.0 FTE.

Instructor

Tenure-track faculty member who does not yet hold the terminal degree in the appropriate field. UW requires verification of degrees in the form of official transcripts. UW does not grant tenure to faculty members who hold Instructor status at the time of the decision.

Leave of Absence Without Pay

Academic and administrative personnel may request leaves without pay for periods normally not in excess of one year, for purposes consistent with the professional enhancement of the employee and the advancement of the University's stature.

Lecturer

A category of academic professional involved largely in classroom instruction. Lecturers may be appointed to three ranks: Assistant Lecturer, Associate Lecturer, Senior Lecturer.

Library Faculty

This faculty designation applies to employees of the University Libraries. There are three ranks of library faculty: Assistant Librarian, Associate Librarian, Librarian.

Part-Time Employee

Any employee holding less than a full-time equivalent position (FTE less than 1.0).

Post-Doctoral Associate

Post-Docs are doctorally qualified academic professionals seeking greater professional development and research investigation, before obtaining permanent employment. Post-Doctoral appointments are temporary.

Probationary Faculty

This term refers to tenure-track faculty members who are working toward tenure and to academic professionals, library faculty, and archive faculty who are working toward extended-term contracts. The probationary term for academic professionals is generally six years, with yearly reviews and re-appointments. For librarians and archivists, it is five years. Faculty members who are on tenure-track appointments typically undergo the review for tenure in the sixth year of employment.

Professional Development Leave

Extended-term academic professionals who have completed six years of service at the University are eligible for professional development leave. The purpose of development leave is to enhance performance, to conduct special studies, or in some other way to enhance an individual's ability to contribute to the University. Development leaves can be granted with or without pay, are the prerogative of the academic unit in which the academic professional is located, and are generally similar to sabbatical leaves for faculty.

Professor

In addition to the qualification of an Associate Professor, "full" Professors have attained wide recognition in their professional fields for scholarship or other creative activity and have gained recognition for superior teaching and service.

Research Professor

Person with demonstrated superior capacity for research contributions, who is employed solely on external funds, and who holds a terminal degree. These appointments are made only at the Professor level and for not more than one year at a time. They are renewable.

Research Scientist

An academic professional whose primary responsibility is to conduct research. There are three ranks for Research Scientists: Assistant Research Scientist, Associate Research Scientist, Research Scientist.

Review Year

Year in which a reappointment review occurs for probationary employees. Normally, tenure-track faculty members undergo mandatory reappointment reviews in their first, second, and fourth years, with optional reviews in the third and fifth years. A review for the tenure decision occurs no later than the sixth year. An explanatory flow chart appears at the end of this glossary. In some cases employees start with credit toward a tenure or extended-term decision, based on their previous experience. In these cases the review year is the number of years of service at UW plus the number of years of credit.

Sabbatical Leave

Sabbatical leave may be granted to any tenured member of the faculty for the purposes of increasing professional competence and usefulness to the University. A minimum of six years service at the University must precede each period of sabbatical leave, although no right accrues automatically through lapse of time. Sabbatical leaves are normally granted for either a half year (full pay) or a full year (60% of salary). A faculty member who fails to return to the University after a sabbatical leave must repay the amount of compensation received from the University during the sabbatical. Faculty members may not use sabbatical leaves to pursue degrees.

Temporary Appointment

A short-term appointment without rights to tenure or extended term. Most temporary appointments are for one semester or one academic year.

Tenure-Track Appointment

Indicates a probationary faculty appointment prior to the award of tenure. Tenure-track positions generally require six years to tenure, but fewer years may be required based upon level of previous experience and accomplishments.

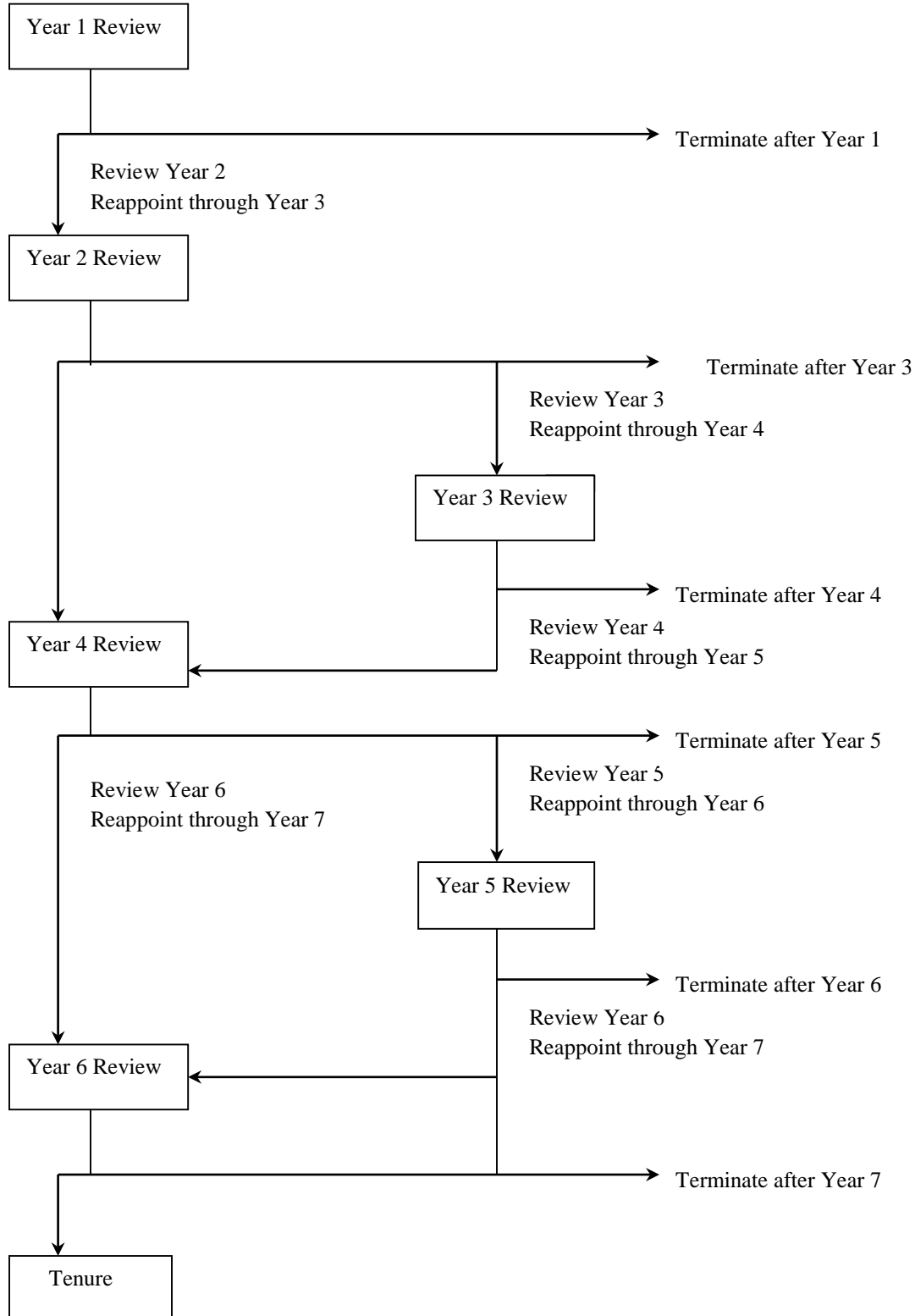
Terminal Degree

Typically the highest earned degree in a field of study. Examples include the Ph.D. (a variety of fields), the M.D. (medicine), the Ed.D. (education), M.F.A. (fine arts), M.Arch. (architecture), and J.D. (law).

Visiting Appointment

Indicates a non-permanent, non-tenure-track faculty appointment. Most visiting appointments are for one year.

FLOW CHART FOR FACULTY REAPPOINTMENTS



B. Items for Information

The changes in appointments and reappointments listed below are for the information of members of the Board of Trustees.

CHANGES IN APPOINTMENTS

1. Faculty

College of Engineering and Applied Science

<u>Name</u>	<u>Rank</u>	<u>Salary</u>	<u>Appointment Begins</u>
<i>Department of Chemical & Petroleum Engineering</i>			
Piri, Mohammed	Wyoming Excellence Chair in Petroleum Engineering	\$176,004/AY	04/01/2014

REAPPOINTMENTS

1. Faculty

College of Health Sciences

<u>Name</u>	<u>Rank</u>	<u>Appointment Period</u>
<i>Family Medicine Residency Program - Casper</i>		
Deiss, Zachory F.	Clinical Assistant Professor	07/01/2014
Karnes Oland, Sharon	Clinical Assistant Professor	07/01/2014
Kirsch Russell, Caroline	Clinical Assistant Professor	07/01/2014
Maurer, William Burl	Clinical Assistant Professor	07/01/2014
Miller, Michael	Clinical Assistant Professor	07/01/2014
Radosevich, Thomas E.	Clinical Associate Professor	07/01/2014
Sievers, Karlynn D.	Clinical Assistant Professor	07/01/2014
Works, Cynthia	Clinical Assistant Professor	07/01/2014
<i>Family Medicine Residency Program - Cheyenne</i>		
Broomfield, Kimberly R.	Clinical Assistant Professor	07/01/2014
Healey, John P.	Clinical Assistant Professor	07/01/2014
Oiler, Pamela Mary	Clinical Assistant Professor	07/01/2017
<i>School of Pharmacy</i>		
Biehle, Lauren R.	Clinical Assistant Professor	07/01/2014
Harshberger, Cara A.	Clinical Assistant Professor	07/01/2014
Hilaire, Michelle L.	Clinical Associate Professor	07/01/2014
Hornecker, Jaime Rose	Clinical Associate Professor	07/01/2014

Krueger, Janelle L.	Clinical Associate Professor	07/01/2014
Linn, Becky	Clinical Assistant Professor	07/01/2014
Petrie, Jennifer L.	Clinical Associate Professor	07/01/2014
Salveson Fox, Lanae L.	Clinical Assistant Professor	07/01/2014
Thompson, Angela M	Clinical Assistant Professor	07/01/2014
Vandiver, Jeremy W	Clinical Assistant Professor	07/01/2014
Woods, Tonja M.	Clinical Associate Professor	07/01/2014

3. Committee of the Whole- CONSENT AGENDA

Approval of Access Easement to Wyoming Military Department for Field Maintenance Shop, Mai

CHECK THE APPROPRIATE BOX(ES):

- Work Session
- Education Session
- Information Item
- Other Specify: Committee of the Whole (Consent Agenda)

BACKGROUND AND POLICY CONTEXT OF ISSUE:

The Wyoming Army National Guard has completed construction of Field Maintenance Shop (FMS) 2 near Laramie Regional Airport. The facility is located west of Laramie, south of State Highway 130 and east of Laramie Regional Airport. The University of Wyoming currently leases the land where FMS 2 is located to the Wyoming Military Department with the understanding both parties will benefit from a future exchange of the FMS 2 site land for the Laramie Armory property at 2901 Armory Road. The current lease for the site is for a term of thirty years ending September 30, 2037.

The National Guard used the existing private gravel road during construction of the FMS 2 facility. As part of the National Guard's FMS 2 project, a new access off of State Highway 130 for a new paved road was granted by the Wyoming Department of Transportation (WYDOT). As a condition of WYDOT granting the new access permit, the old access for the gravel road was required to be removed and reclaimed. The new paved private access road follows the sewer and water utility lines to the City's water tank facilities and the FMS 2 facility.

An access easement for the new road for legal access needs to be granted to the Wyoming Military Department. The access easement area measures 80 feet wide and 1,651.98 feet long (3.034 acres). The easement will provide the Wyoming Military Department non-exclusive use and maintenance of the roadway to access the National Guard's FMS 2 facility so long as the road remains in use and the lease remains in effect. A fee for the easement will not be charged to the Wyoming Military Department as a state agency and in recognition of the mutually beneficial partnership with the National Guard.

PRIOR RELATED BOARD DISCUSSIONS/ACTIONS:

March 2014 – Approval of Access and Utility Easements to the City of Laramie for West Laramie Water Tank

WHY THIS ITEM IS BEFORE THE BOARD:

It is the policy of the University of Wyoming that when a facility is no longer occupied, or upon request of the University administration, an evaluation of the subject facility or land shall be made to guide decisions regarding the retention or disposal of the facility and the land. The Vice President for Administration shall establish procedures, as appropriate, to determine necessary

analyses to be used in the evaluation. Any evaluation regarding retention or disposal of real property shall be presented to the Trustees of the University of Wyoming for consideration. UW Regulation 1-102, Attachment A: Policy for Retention or Disposal of Real Property. Approved by the Board of Trustees of the University of Wyoming July 25, 1998

Board approval is necessary for the University to grant the access easement across University land to the Wyoming Military Department.

ARGUMENTS IN SUPPORT:

- The proposed access easement follows the paved roadway (constructed as part of the FMS 2 project) with little to no impact to the University's use of its facilities.
- Co-location of the road and the utility lines (under and adjacent to the road) create a desirable corridor for access and services to the facilities in the area.
- The same non-exclusive access easement for use of the paved roadway was recently approved to be granted to the City of Laramie (March 2014).
- The lease states that necessary rights of way and easements will be granted to the Wyoming Military Department so long as they continue to lease the site.
- University and National Guard personnel worked collaboratively on access and utility locations.
- The partnership with the National Guard for the future exchange of lands provides both agencies with sufficient sites for much needed capital facilities.
- The easement continues the collaborative partnership between the Wyoming Military Department and UW.

ARGUMENTS AGAINST:

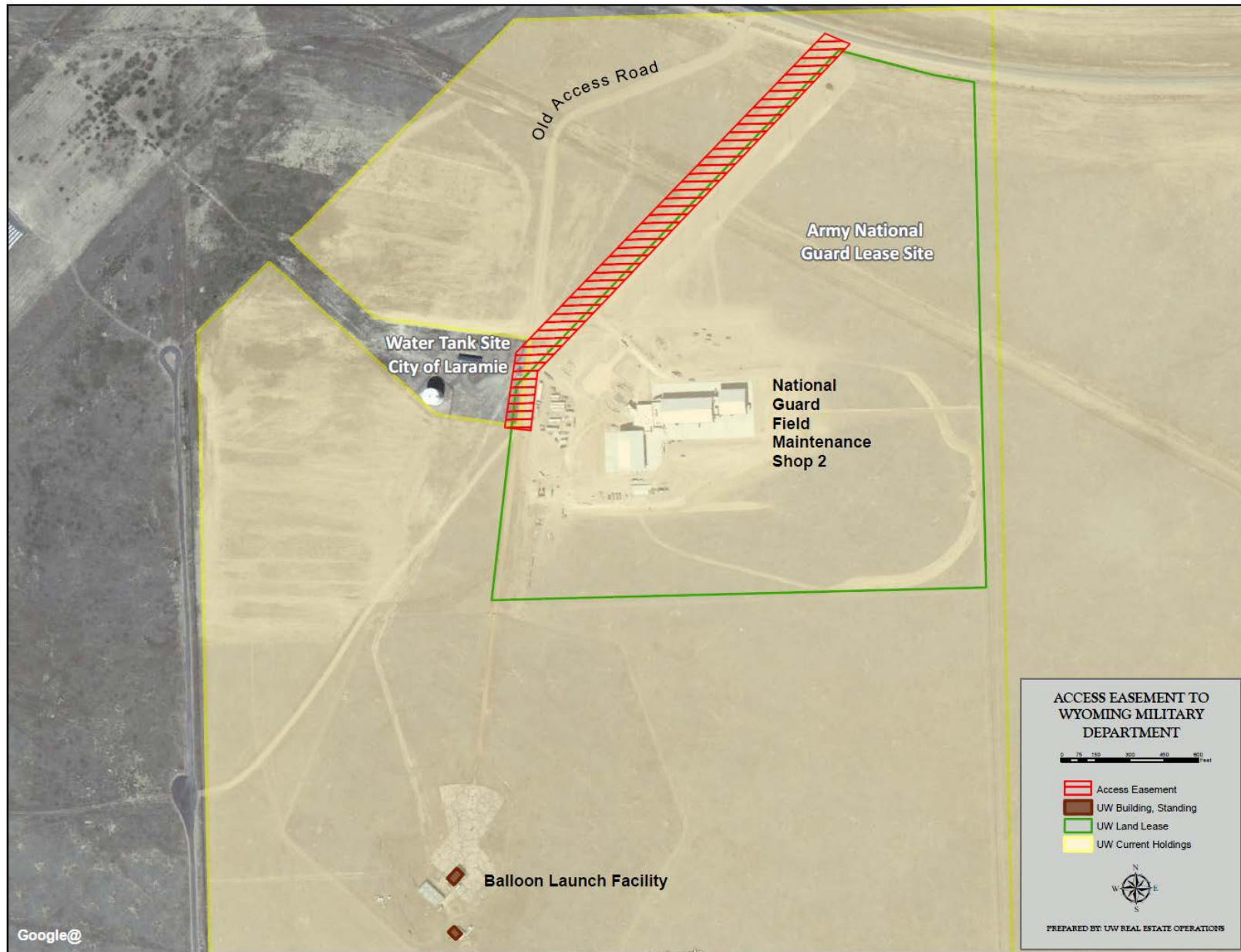
None.

ACTION REQUIRED AT THIS BOARD MEETING:

The Board's approval to grant the access easement to the Wyoming Military Department on University property for the National Guard FMS 2 and future facilities on the site.

PRESIDENT'S RECOMMENDATION:

It is recommended that the Board of Trustees of the University of Wyoming approve the access easement to the Wyoming Military Department.



4. Committee of the Whole- CONSENT AGENDA
Approval of FY 2015 Operating Budget, Mai

CHECK THE APPROPRIATE BOX(ES):

- Work Session
- Education Session
- Information Item
- Other Specify: Committee of the Whole (Consent Agenda)

BACKGROUND AND POLICY CONTEXT OF ISSUE:

Vice President for Administration Bill Mai will provide materials to the Board of Trustees at the meeting.

5. Committee of the Whole- CONSENT AGENDA
Updates to FY 2014 Operating Budget Authority, Mai

CHECK THE APPROPRIATE BOX(ES):

- Work Session
- Education Session
- Information Item
- Other Specify: Committee of the Whole (Consent Agenda)

BACKGROUND AND POLICY CONTEXT OF ISSUE:

Vice President for Administration Bill Mai will provide materials to the Board of Trustees at the meeting.

6. Committee of the Whole- CONSENT AGENDA
Approval of State Matching Funds, Blalock

CHECK THE APPROPRIATE BOX(ES):

- Work Session
 Education Session
 Information Item
 Other Specify: Committee of the Whole (Consent Agenda)

GIFTS PROPOSED FOR STATE MATCHING FUNDS
May 2014

Matching Funds for Disciplines Related to Wyoming's Economy (\$5.0MM) – 2014 Wyoming Session Laws, Chapter 26, Section 067 of Section 3, footnote 13

Adams, Donald; Salt Lake City, UT

Gift Amount: \$100,000.00
Match Amount Requested \$100,000.00
Fund Name: Don and Roberta Adams Engineering Scholarship
New/Existing: Existing
Purpose: Supplement permanent scholarship in the Department of Mechanical Engineering

Anderson, James & Jill; Morrison, CO

Gift Amount \$75,000.00
Match Amount Requested \$75,000.00
Fund Name: Earl F. and V. Marie Anderson Scholarship
New/Existing: Existing
Purpose: Supplemental funds to the scholarship in the Department of Geology and Geophysics

Anderson, Richard; Berkeley, CA

Gift Amount \$50,000.00
Match Amount Requested \$50,000.00
Fund Name: G.E. Coates Memorial Lectures in Inorganic Chemistry Fund
New/Existing: New
Purpose: Support a longstanding lecture series in the Department of Chemistry. Distributions will pay an honorarium, travel expenses and other expenses related to bringing guest lecturers to campus.

Baccari, Larry; Sheridan, WY

Gift Amount \$250,000.00
Match Amount Requested \$250,000.00
Fund Name: Larry and Lynn Baccari Fellowship in Civil Engineering
New/Existing: New
Purpose: Establish a Fellowship in the Department of Civil and Architectural Engineering

Anonymous; Laramie, WY

Gift Amount \$200,000.00
Match Amount Requested \$200,000.00
Fund Name: Excellence in Geology Fund
New/Existing: Existing
Purpose: Supplement an existing programmatic endowment in the Department of Geology and Geophysics that supports the following: travel and research awards to faculty or students, supplementing graduate assistantships, and other uses that further the department's mission in teaching, research, and service.

Bronston, Mark & Carolyn; Houston, TX

Gift Amount \$50,000.00
Match Amount Requested \$50,000.00
Fund Name: The Mark & Carolyn Bronston Geology Summer Field Camp Scholarship
New/Existing: New
Purpose: This fund will award scholarships to geology students enrolled in the Geology Summer Field Camp.

Buggenhagen, John; Littleton, CO

Gift Amount \$50,000.00
Match Amount Requested \$50,000.00
Fund Name: John Buggenhagen Graduate Student Endowment in Geology and Geophysics
New/Existing: New
Purpose: Support research and award scholarships to graduate students in the Department of Geology and Geophysics.

Burnett, Lowell; San Diego, CA

Gift Amount \$50,000.00
Match Amount Requested \$50,000.00
Fund Name: TBD
New/Existing: New
Purpose: Provide funding for graduate students in the Physics Department. Preference will go to those students studying "condensed matter".

Carollo, Al & Carolyn; Green River, WY

Gift Amount \$100,000.00
Match Amount Requested \$100,000.00
Fund Name: Al and Carolyn Carollo Dean's Excellence Fund in Nursing
New/Existing: New
Purpose: Support items including, but not limited to; technology and equipment updates, facility improvements, student support and faculty support at the Fay W. Whitney School of Nursing.

Fisk, Bob; Green Valley, AZ

Gift Amount \$50,000.00
Match Amount Requested \$50,000.00
Fund Name: The Robert and Romy Fisk Mathematics Colloquium
New/Existing: New
Purpose: Support a lecture series in the Department of Mathematics. Distributions will pay an honorarium, travel expenses and other expenses related to bringing guest lecturers to campus.

Harris, Scott & Martha; Alexandria, VA

Gift Amount \$60,000.00
Match Amount Requested \$60,000.00
Fund Name: TBD
New/Existing: New
Purpose: Support for College of Agriculture and Natural Resources students and Center for Global Studies students who are conducting international research concerning sustainable development and natural resources with a focus on agricultural policy and governance, environmental and natural resources, applied economics, and rural and community development research topics.

Johnson, Blane & Jill; Wray, CO

Gift Amount \$50,000.00
Match Amount Requested \$50,000.00
Fund Name: Weston Johnson "Never Flinch" Memorial Scholarship
New/Existing: New
Purpose: This scholarship will be given to students within the College of Business with a preference to students from Sheridan High School who have participated in high school athletics, and have demonstrated financial need. The scholarship is named in honor of Weston Johnson, former U.W. football player who passed away in 2013.

Kemmerer, Jay; Jackson, WY

Gift Amount \$500,000.00
Match Amount Requested \$500,000.00
Fund Name: John L. Kemmerer, Jr. Scholarship Fund
New/Existing: Existing
Purpose: Supplement the Kemmerer Family Foundation's existing scholarship that supports undergraduate students from two Wyoming communities and will provide funding for graduate students at the Haub School of Environment and Natural Resources.

Kercher, Conrad & Lydia; Laramie, WY

Gift Amount \$50,000.00
Match Amount Requested \$50,000.00
Fund Name: Kercher Family Scholarship in Medical Studies
New/Existing: New
Purpose: Funds will provide scholarships to students enrolled in the Clinical Laboratory Sciences (CLS) B.S. degree program and pre-medicine students.

Miller, Stephen & Bonnie; Laramie, WY

Gift Amount \$50,000.00
Match Amount Requested \$50,000.00
Fund Name: Agricultural Experiment Station Researcher Award
New/Existing: Existing
Purpose: Supplement current endowment that provides awards to faculty members appointed in the College of Agriculture and Natural Resources who have outstanding research achievements.

Nice, David; Spring, TX

Gift Amount \$50,000.00
Match Amount Requested \$50,000.00
Fund Name: The Endowment for Graduate Students in Paleontology and/or Stratigraphy
New/Existing: New
Purpose: Provide scholarships to graduate students researching paleontology, stratigraphy, and/or sedimentology.

Shlemon, Roy; Newport Beach, CA

Gift Amount \$250,000.00
Match Amount Requested \$250,000.00
Fund Name: The Roy J. Shlemon Center for Quaternary Studies in Geology
New/Existing: Existing

Purpose: Supports the activities of the Roy J. Shlemon Center for Quaternary Studies within the department of Geology and Geophysics. This center focuses on the geological, fossil and archeological record of the Quaternary Period.

Remaining Matching Funds from 2011 Supplemental Budget Session - Endowment or Academic Facilities – Original Appropriation of \$3.5 Million

Anonymous; Laramie, WY

Gift Amount \$200,000.00
Match Amount Requested \$200,000.00
Fund Name: Margaret Boyd Scholarship Fund and the Department of Family & Consumer Sciences Endowment Fund
New/Existing: Existing
Purpose: Supplement two existing endowments for the benefit of the Department of Family and Consumer Sciences within the College of Agriculture and Natural Resources

Corkery, John and Dara; Gillette, WY

Gift Amount \$50,000.00
Match Amount Requested \$50,000.00
Fund Name: The John and Dara Corkery Endowment for Synergy
New/Existing: New
Purpose: Scholarships to students who have successfully completed the Synergy program which is a one-year program which helps students who have been admitted outside of UW's admission parameters. Distributions from the fund will also fund a writing lab and other activities related to the Synergy program.

Garrison, Jean; Laramie, WY

Gift Amount \$50,000.00
Match Amount Requested \$50,000.00
Fund Name: The Center for Global Studies Excellence Endowment
New/Existing: New
Purpose: The Center for Global Studies will support a range of activities including, graduate student research, internship support, international fieldwork, faculty research support, activities/expenses related to the World to Wyoming Outreach program and guest speakers.

Gasdek, Barry; Laramie, WY

Gift Amount \$50,000.00
Match Amount Requested \$50,000.00
Fund Name: TBD
New/Existing: New
Purpose: Establish three endowed scholarships for students participating in football, for students enrolled in the College of Engineering and Applied Science and for students enrolled in the College of Agriculture and Natural Resources.

Hornbeck, John; Sheridan, WY

Gift Amount \$100,000.00
Match Amount Requested \$100,000.00
Fund Name: Hornbeck Family Excellence Fund in Athletics
New/Existing: New
Purpose: Fund expenses associated with creating excellence in athletics including but not limited to program expenses, scholarships, facilities, travel, operational expenses and other opportunities that advance the mission of the department.

Hulett, Mary & Arlowe; Laramie, WY

Gift Amount \$31,500.00
Match Amount Requested \$31,500.00
Fund Name: Arlowe and Mary Hulett Family Scholarship in Athletics
New/Existing: Existing
Purpose: Fund is awarded to student-athletes at the University of Wyoming from the state of Wyoming, North Dakota, Montana, or South Dakota and who participate in either basketball or football.

Levig, Anne Siren; Sun City West, AZ

Gift Amount \$50,000.00
Match Amount Requested \$50,000.00
Fund Name: Thomas B. & Anne Siren Levig Arts & Sciences Honors Scholarship
New/Existing: New
Purpose: Provide scholarships to students enrolled in the Honors program who are pursuing degrees within the College of Arts & Sciences.

May, Woodrow & Glyda; Wheatland, WY

Gift Amount \$300,000.00
Match Amount Requested \$300,000.00
Fund Name: Woodrow and Glyda May Scholarship for the College of Agriculture and Natural Resources
New/Existing: New

Purpose: Establish a new scholarship with preference given to students from Platte County, Wyoming/Wyoming residents.

McKinley, John & Kathleen; Cheyenne, WY

Gift Amount \$100,000.00
Match Amount Requested \$100,000.00
Fund Name: McKinley Family Scholarship for Graduate Students
New/Existing: New
Purpose: Create a new scholarship to support students from any graduate program at the University of Wyoming. Preference will be for in-state students.

Milner, Lee & Sue; Torrington, WY

Gift Amount \$60,000.00
Match Amount Requested \$60,000.00
Fund Name: TBD
New/Existing: New
Purpose: Create a new programmatic endowment for UW Libraries focusing on literacy and outreach initiatives.

Muir, Dixie; Westmont, IL

Gift Amount \$50,000.00
Match Amount Requested \$50,000.00
Fund Name: Robert and Gertrude Muir Scholarship
New/Existing: Existing
Purpose: Endow a scholarship in the College of Business that was previously funded as a non-endowed scholarship. This scholarship is in memory of Dixie's parents Robert and Gertrude Muir from Buffalo, Wyoming.

Peters, Oliver & Betsy; Laramie, WY

Gift Amount \$25,000.00
Match Amount Requested \$25,000.00
Fund Name: The International Studies Endowment
New/Existing: Existing
Purpose: Supports student travel, graduate student research opportunities, faculty research and conference travel. This endowment was created by Oliver and Betsy Peters in 2008 and qualified for state matching funds at that time.

Samuelson, Maurene & Smith, Michael; Evanston, WY

Gift Amount \$50,000.00
Match Amount Requested \$50,000.00
Fund Name: University of Wyoming Alumni Association "Tuff" Samuelson Scholarship
New/Existing: New
Purpose: Provide a University of Wyoming Alumni Association administered scholarship to students who are residents of Uinta County, Wyoming.

Siren, Vince; Jenks, OK

Gift Amount \$55,000.00
Match Amount Requested \$55,000.00
Fund Name: TBD
New/Existing: New/Existing
Purpose: Establish a new scholarship in energy accounting and provide additional funding to nine (9) existing endowed scholarships which the donor has supported in the past - College of Business (6) and the College of Arts and Sciences (3).

Windy Ridge Foundation; Laramie, WY

Gift Amount \$350,000.00
Match Amount Requested \$350,000.00
Fund Name: Harry C. Vaughan University of Wyoming Planetarium Excellence Fund
New/Existing: New
Purpose: Support graduate students in the Department of Physics and Astronomy and to support the UW Planetarium and the ongoing technology and equipment needs of the facility.

7. Committee of the Whole- CONSENT AGENDA

Master List of Degrees, Murdock

CHECK THE APPROPRIATE BOX(ES):

- Work Session
- Education Session
- Information Item
- Other Specify: Committee of the Whole (Consent Agenda)

BACKGROUND AND POLICY CONTEXT OF ISSUE:

In March 1983, the Board adopted the process of annually approving a composite list of all degrees and majors offered by the University of Wyoming. The Registrar maintains this list and the Office of Academic Affairs presents it to the Board for confirmation. Each degree and major program has been approved in a previous decision by the Board.

The 2014 List contains three changes compared to the list confirmed by the Board in May 2013. The first of these changes include the Master of Science in Architectural Engineering that was approved by the Board in March 2014. Another change is with the Bachelor of Science focused on Clinical Laboratory that is on the agenda to be approved by the Board during the May 2015 meeting. Finally the list of certificates now includes the Graduate Certificate in Online Play Therapy. As a reminder, in contrast to degrees, which normally require several years of study and some breadth in coursework, a certificate acknowledges that a student has undertaken special coursework and activities—often as part of a degree program—that develop specialized knowledge, skills, or expertise.

ACTION REQUIRED AT THIS BOARD MEETING:

The Board is asked to approve the updated Master List of Degrees and Majors – 2014.

PRESIDENT'S RECOMMENDATION:

The President recommends approval.

UNIVERSITY OF WYOMING
MASTER LIST OF DEGREES AND MAJORS

as authorized by the Trustees

MAY 2014

Prepared by the Office of the Registrar

By way of explanation, the degree title is listed in ***bold italics*** (for example, ***Bachelor of Arts, Bachelor of Science in Chemical Engineering***). The list of majors for a specific degree in a specific college is listed below the degree title. Information in *italics* and parentheses () following a major is explanatory data, and not part of the official major name. Majors with brackets { } require the insertion of a secondary program of study.

COLLEGE OF AGRICULTURE & NATURAL RESOURCES

Bachelor of Applied Science #

Organizational Leadership

Bachelor of Science #

Agricultural Business

Agricultural Communications

Agroecology

Animal and Veterinary Science

Molecular Biology

Rangeland Ecology and Watershed Management

Bachelor of Science in Family and Consumer Sciences

Master of Arts #

Molecular Biology

Master of Science #

Agricultural and Applied Economics

Agronomy

Animal and Veterinary Science

Entomology

Family and Consumer Sciences

Food Science and Human Nutrition (*interdisciplinary*)

Molecular Biology *

Rangeland Ecology and Watershed Management

Soil Science

Doctor of Philosophy #

Agronomy

Animal and Veterinary Science

Entomology

Molecular Biology

Rangeland Ecology and Watershed Management

Soil Science

* = This major counted under previously listed degree in this college (College of Agriculture & Natural Resources)

= This listing not counted as a separate major

COLLEGE OF ARTS & SCIENCES

Bachelor of Arts #

American Indian Studies
American Studies
Anthropology
Art
Chemistry
Communication
Criminal Justice
English
French
Geography
Geology and Earth Sciences
German
History
Humanities/Fine Arts
International Studies
Journalism
Mathematics
Mathematics/Science
Music
Philosophy
Physics
Political Science
Psychology
Religious Studies
Russian
Self-Designed Major
Social Science
Sociology
Spanish
Statistics
Theatre and Dance
Women's Studies

Bachelor of Fine Arts #

Art *
Theatre and Dance *

Bachelor of Music #

Music Education
Music Performance

* = This major counted under previously listed degree in this college (College of Arts and Sciences)
= This listing not counted as a separate major

COLLEGE OF ARTS & SCIENCES (cont.)

Bachelor of Science #

Astronomy/Astrophysics
Biology *
Botany *
Chemistry *
Chemistry (ACS approved) #
Communication *
Environmental Geology/Geohydrology
Geography *
Geology
Journalism *
Mathematics *
Mathematics/Science *
Physics
Physics Plus {affiliated concentration} #
Physiology
Political Science *
Self-Designed Major *
Social Science *
Sociology *
Statistics *
Wildlife and Fisheries Biology and Management (*professional*)
Zoology

Master of Arts #

American Studies (*interdisciplinary*)
Anthropology
Communication
English
French
Geography
German
History
International Studies (*interdisciplinary*)
Mathematics
Philosophy
Political Science
Psychology
Sociology
Spanish

* = This major counted under previously listed degree in this college (College of Arts and Sciences)

= This listing not counted as a separate major

COLLEGE OF ARTS & SCIENCES (cont.)

Master of Arts in Teaching #

History *

Mathematics *

Master of Fine Arts in Creative Writing

Master of Music

Master of Music Education

Master of Planning (Community and Regional)

Master of Public Administration

Master of Science #

Botany

Chemistry

Geology

Geophysics

Mathematics *

Natural Science (*interdisciplinary*)

Physics

Psychology *

Statistics

Zoology and Physiology

Master of Science in Teaching #

Chemistry *

Geography *

Mathematics *

Natural Science (*interdisciplinary*) *

Physics *

Doctor of Philosophy #

Anthropology

Botany

Chemistry

Geology

Geophysics

Mathematics

Physics

Psychology

Statistics

Zoology and Physiology

* = This major counted under previously listed degree in this college (College of Arts and Sciences)

= This listing not counted as a separate major

COLLEGE OF BUSINESS

Bachelor of Science #

Accounting
Business Administration
Business Economics
Economics#
Finance
Management
Marketing

Master of Business Administration

Master of Science #

Accounting
Economics
Economics and Finance
Finance

Doctor of Philosophy #

Economics
Management and Marketing

= This listing not counted as a separate major

COLLEGE OF EDUCATION

Bachelor of Arts #

Elementary Education
Elementary and Special Education
Secondary Education
Special Education

Bachelor of Science #

Technical Education (*only available through UW/CC Center*)
Trades and Industrial Education
Agricultural Education

Master of Arts #

Education

Master of Science #

Counseling
Education *
Natural Science (*interdisciplinary*) *

Education Specialist

Doctor of Education

Doctor of Philosophy #

Counselor Education and Supervision
Curriculum and Instruction
Education #

* = This major counted under previously listed degree in this college (College of Education)

= This listing not counted as separate major

COLLEGE OF ENGINEERING AND APPLIED SCIENCE

Bachelor of Science in Architectural Engineering

Bachelor of Science in Chemical Engineering

Bachelor of Science in Chemical Engineering (petroleum engineering option) #

Bachelor of Science in Civil Engineering

Bachelor of Science in Computer Engineering

Bachelor of Science in Computer Science

Bachelor of Science in Computer Science (business option) #

Bachelor of Science in Electrical Engineering

Bachelor of Science in Electrical Engineering (Francis M. Long bioengineering option) #

Bachelor of Science in Electrical Engineering (computer engineering option) #

Bachelor of Science in Energy Systems Engineering

Bachelor of Science in Mechanical Engineering

Bachelor of Science in Petroleum Engineering

Master of Science #

Architectural Engineering

Atmospheric Science

Chemical Engineering

Civil Engineering

Computer Science

Computer Science Professional #

Electrical Engineering

Environmental Engineering

Mechanical Engineering

Petroleum Engineering

Doctor of Philosophy #

Atmospheric Science

Chemical Engineering

Civil Engineering

Computer Science

Electrical Engineering

Mechanical Engineering

Petroleum Engineering

= This listing not counted as a separate major

COLLEGE OF HEALTH SCIENCES

Bachelor of Science #

Kinesiology and Health Promotion
Physical Education Teaching
Speech, Language and Hearing Sciences
Clinical Laboratory

Bachelor of Science in Dental Hygiene

Bachelor of Science in Nursing

Bachelor of Social Work

Master of Science #

Nursing
Kinesiology and Health
Speech-Language Pathology

Master of Social Work

Doctor of Nursing Practice

Doctor of Pharmacy

= This listing not counted as a separate major

COLLEGE OF LAW

Juris Doctor

SCHOOL OF ENVIRONMENT & NATURAL RESOURCES

Bachelor of Science #

Environment and Natural Resources/{affiliated major}

CROSS-COLLEGE INTERDISCIPLINARY UNDERGRADUATE DEGREES

Bachelor of Science #

Earth Systems Science with a concentration in {affiliated major}
Energy Resource Management and Development
Microbiology

= This listing not counted as a separate major

CROSS-COLLEGE INTERDISCIPLINARY GRADUATE DEGREES

Juris Doctor/Master of Arts in Environment and Natural Resources #

Juris Doctor/Master of Public Administration #

= This listing not counted as a separate major

ACADEMIC AFFAIRS

Master of Arts #

Geography/Water Resources #
Interdisciplinary Studies

Master of Science #

Agricultural Economics/Water Resources #
Biomedical Sciences
Botany/Water Resources #
Civil Engineering/Water Resources #
Economics/Water Resources #
Geology/Water Resources #
Interdisciplinary Studies *
Neuroscience
Rangeland Ecology and Watershed Management/Water Resources #
Soil Science/Water Resources #
Zoology and Physiology/Water Resources #

Master of {affiliated degree}/Environment and Natural Resources #

Doctor of Philosophy #

Biomedical Sciences
Ecology
Hydrologic Science
Molecular and Cellular Life Sciences
Neuroscience

* = This major counted under previously-listed degree in this unit (Academic Affairs)

= This listing not counted as a separate major

**Aggregate list of certificates offered at UW
May 2014**

Graduate certificates

American Studies
Health and Medical Social Work
Rural Clinical Mental Health Social Work
Early Childhood Mental Health
English as a Second Language
K-12 Special Education
Literacy
Music Performance
Nurse Educator
Online Instruction
Online Play Therapy
Program in College Teaching
Reclamation and Restoration Ecology
School District Superintendent
School Principalship
School Social Work
Teachers of American Indian Children
Teaching Elementary School
Teaching Middle School Math
Teaching Middle School Science
Teaching Secondary Content

Undergraduate certificates

Early Childhood Program Director
Geographic Information Science & Technology
Land Surveying

8. Committee of the Whole- CONSENT AGENDA
ASUW Constitution Revisions, Axelson

CHECK THE APPROPRIATE BOX(ES):

- Work Session
- Education Session
- Information Item
- Other Specify: Committee of the Whole (Consent Agenda)

BACKGROUND AND POLICY CONTEXT OF ISSUE:

One substantive change to the Constitution of the Associated Students of the University of Wyoming (ASUW) has been recommended.

One of ASUW's three branches is the Judicial Branch. The Judicial Branch is tasked with the duties of interpreting the ASUW working documents, as well as serving as ASUW's appellate body. Due to their unique role, it is important that the Judicial Council remains unbiased in decisions that are before the ASUW Senate. The proposed change to Article VII (ASUW Judicial Council), Section 1, subsection F clarifies the language in the ASUW Constitution. The language currently reads, "Members of the Judicial Council may not be publicly involved in any decision before the ASUW Senate."

Per ASUW Senate Bill #2425, the language has been amended to read, "Members of the Judicial Council may not appear before the ASUW Senate, participate publicly in any debate or decisions pending approval of the ASUW Senate, or have excessive interactions with ASUW Senators on any business before the ASUW Senate, unless such debate, decision, or business has the potential to directly impact the workings or responsibilities of the Judicial Council or its Justices."

This change will be before the student body in a form of a referendum during the ASUW General Election on April 14-16, 2014.

WHY THIS ITEM IS BEFORE THE BOARD:

Article VIII (Students), Section F of the Trustee Regulations provides that, "No revisions of, or amendment to, such constitution shall become effective until they have been submitted to and approved by the Trustees." A nearly identical provision is found in Article X, Section 3 of the ASUW Constitution.

ARGUMENTS IN SUPPORT:

The ASUW Senate has approved these changes. If ratified by the student body, these changes will clear up the current vague wording.

ARGUMENTS AGAINST:

None

ACTION REQUIRED AT THIS MEETING:

Formal approval of the proposed changes is requested by ASUW.

PRESIDENT'S RECOMMENDATION:

The President recommends approval.

9. Committee of the Whole- CONSENT AGENDA
Approval of Naming of the Golf Practice Facility, Blalock/Mai

CHECK THE APPROPRIATE BOX(ES):

- Work Session
- Education Session
- Information Item
- Other Specify: Committee of the Whole (Consent Agenda)

10. Committee of the Whole- CONSENT AGENDA
Approval of Name Change for UW Planetarium, Blalock/Mai

CHECK THE APPROPRIATE BOX(ES):

- Work Session
- Education Session
- Information Item
- Other Specify: Committee of the Whole (Consent Agenda)

11. Committee of the Whole- CONSENT AGENDA
Approval of Architect and Engineer for Corbett Pool Addition, Mai

CHECK THE APPROPRIATE BOX(ES):

- Work Session
- Education Session
- Information Item
- Other Specify: Committee of the Whole (Consent Agenda)

12. Committee of the Whole- CONSENT AGENDA

Appointments to the University of Wyoming Research Corporation Board of Directors, Gern

CHECK THE APPROPRIATE BOX(ES):

- Work Session
- Education Session
- Information Item
- Other Specify: Committee of the Whole (Consent Agenda)

BACKGROUND AND POLICY CONTEXT OF ISSUE:

The University of Wyoming Research Corporation Board of Directors are appointed by the UW Board of Trustees annually to serve a one year term. Board members may serve multiple, one year terms of appointment. This appointment period ends in June 2015.

We recommend that the following individuals be appointed to the UWRC Board of directors.

- Dr. William A. Gern, Chairperson
- Dr. Myron Allen
- Mr. Ronald Benson
- Mr. Ronald Collins
- Mr. Brent Erickson
- Mr. Rob Hurless
- Mr. Richard Willson

13. Committee of the Whole- CONSENT AGENDA

Approval of the Medical Laboratory Sciences (MLSC) Program, Murdock

CHECK THE APPROPRIATE BOX(ES):

- Work Session
- Education Session
- Information Item
- Other Specify: Committee of the Whole (Consent Agenda)

BACKGROUND AND POLICY CONTEXT OF ISSUE:

In 2011, the Casper Area Economic Development Alliance (CAEDA), in conjunction with Casper College, requested that the University of Wyoming consider a number of additional UW degree programs to be offered through the University of Wyoming-Casper. CAEDA board members agreed that they would encourage appropriate legislative support for programs that UW proposed offering at UW-Casper. Following discussions between UW and Casper College administrators, as well as faculty involved in some of the academic programs, the University proposed the Medical Laboratory Sciences program be part of the University's legislative budget request for the 2014 Legislative Session. The University requested, and was successful in receiving, a FY2015 and FY2016 biennium allocation of \$726,000 to support the implementation of the MLSC program as part of the UW College of Health Sciences offerings through UW-Casper.

PRIOR RELATED BOARD DISCUSSIONS/ACTIONS:

The Board of Trustees approved UW's 2014 legislative requests, including the request for support of the MLSC program.

WHY THIS ITEM IS BEFORE THE BOARD:

The Board of Trustees must approve all new University of Wyoming degree programs.

ARGUMENTS IN SUPPORT:

- Pursuant to the Board of Trustees' approval of the University's 2014 legislative budget requests, the 2014 Wyoming Legislature allocated \$726,000 for the implementation of the Medical Laboratory Sciences degree to be offered by the UW College of Health Sciences through the UW-Casper programs.
- The market for Medical Laboratory Sciences graduates continues to grow, both in Wyoming and the region: jobs are available for graduates at good salaries. MLSC graduates are an essential part of the healthcare system.
- This education is not available to Wyoming students through other avenues such as WICHE.
- The University MLSC program is designed to build on the Casper College two-year program for medical laboratory technicians, thus providing a pipeline for students into the UW MLSC program.
- The University has applied for specialized accreditation, a requirement for offering the program.

ARGUMENTS AGAINST:

None.

ACTION REQUIRED AT THIS BOARD MEETING

The Board's approval of the Medical Laboratory Sciences degree program.

PRESIDENT'S RECOMMENDATION:

It is recommended that the Board of Trustees of the University of Wyoming approve the Medical Laboratory Sciences degree program.

14. Committee of the Whole- CONSENT AGENDA
Approval of Site Selection for ASUW Memorial, Mai

CHECK THE APPROPRIATE BOX(ES):

- Work Session
 Education Session
 Information Item
 Other Specify: Committee of the Whole (Consent Agenda)

BACKGROUND AND POLICY CONTEXT OF ISSUE:

In 2012, the Associated Students of the University of Wyoming (ASUW) celebrated its 100th anniversary. Since that time, ASUW has considered several projects on campus that would commemorate this anniversary. Projects considered were an upgrade to the Science Plaza between the Physical and Biological Sciences Buildings, and the replacement of the Nuclear Family sculpture on Prexy's Pasture with a Steamboat sculpture. After substantial review and deliberations, ASUW decided to create a memorial to University of Wyoming students who pass on while matriculating at the University, and to provide equal recognition for all such students.

The proposed location for the ASUW Memorial Plaza is at the east end of Prexy's Pasture, east of a row of existing Spruce trees and west of the plaza in front of Half Acre Gym. The ASUW Memorial Plaza would consist of "ornamental improvements" including low sandstone walls with inspirational inscriptions, Vedauwoo boulders, flagstone paving, alpine rock garden plantings, and bench seating—similar to the nearby Sullivan and Simpson Plazas, at the northeast and southeast corners, respectively, of Prexy's Pasture.

The ASUW Memorial planning team and Facilities Planning Office considered several sites for the plaza. The criteria for site selection included:

- High visibility;
- A location near the most active student locations on the campus, such as the Half Acre Gym and the Wyoming Union; and
- Compliance with the UW Long Range Development Plan (LRDP).

Chapter 223 of the Session Laws of Wyoming, 1971 states:

"Section 1. In order to preserve the natural and open beauty of that portion of the University of Wyoming campus commonly known and referred to as "Prexy's Pasture", it is hereby declared that no structures, other than ornamental improvements, or buildings of any kind or type shall be located or constructed upon said portion of the campus..."

The proposed ASUW Memorial Plaza would consist of ornamental improvements only and not involve any structures or buildings.

The following recommendations of the LRDP were considered:

- “Maximize aesthetic interest and attractiveness of Prexy’s Pasture...”
- “Increase opportunities for formal and informal meetings and gatherings in and adjacent to Prexy’s Pasture”.
- “Improve connectivity to and through Prexy’s Pasture”.

The total projected construction cost for the plaza is \$235,000. The project will be funded through ASUW funds.

PRIOR RELATED BOARD DISCUSSIONS/ACTIONS:

March 2014 presentation to Board of Trustees by ASUW President.

WHY THIS ITEM IS BEFORE THE BOARD:

Authorization is required from the Board of Trustees to site the ASUW memorial Plaza on Prexy’s Pasture.

ARGUMENTS IN SUPPORT:

The proposed location of the ASUW Memorial Plaza is appropriate and is in compliance with the recommendations of the University’s Long Range Development Plan (LRDP).

ARGUMENTS AGAINST:

None.

ACTION REQUIRED AT THIS BOARD MEETING:

Authorization to locate the ASUW Memorial Plaza at the east end of Prexy’s Pasture, west of the Half Acre Gym plaza.

PRESIDENT’S RECOMMENDATION:

It is recommended that the Board of Trustees of the University of Wyoming approve the site location for the ASUW Memorial Plaza at the east end of Prexy’s Pasture, west of the Half Acre Gym plaza.

1. INFORMATION ONLY ITEM
Progress Report/Change Orders, Mai

CHECK THE APPROPRIATE BOX(ES):

- Work Session
- Education Session
- Information Item
- Other Specify:

Capital Construction
Progress Report as of April 15, 2014

The following is an accounting of the progress and activity of construction and design since the last Trustees meeting. Also reported are approved change orders.

PROJECTS IN CONSTRUCTION

1. Energy Innovation Center

Construction Manager at Risk	G E Johnson Construction Company
	Jackson, WY
Guaranteed Maximum Price	\$18,926,514
Contract Substantial Completion Date	June 4, 2012
Extended	June 7, 2013

(In Thousands)	Total	Admin	Constr	Design	Tech	FF&E	Misc	Cntngcy
Budget	25,400	686	19,348	1,855	1,070	1,007	507	927
Expended	28,851	686	22,799	1,855	1,070	1,007	507	927
Obligated	118	0	105	13	0	0	0	0
Other Funding	3,569	0	3,556	13	0	0	0	0
Un-obligated	0	0	0	0	0	0	0	0

Remarks Contractor has completed warranty work. Drilling Simulation equipment has been installed.

2. White Hall Renovation

Contractor Sampson Construction Company, Inc.
 Cheyenne, WY
 Bid Price \$10,355,500
 Contract Substantial Completion Date Various phases – final phase August 7, 2015

(In Thousands)	Total	Admin	Constr	Design	FF&E	Misc	Cntngcy
Budget	13,935	789	11,185	553	440	311	657
Expended	12,855	473	11,051	553	390	311	77
Obligated	570	0	489	0	0	0	81
Other Funding	355	0	355	0	0	0	0
Un-obligated	865	316	0	0	50	0	499

Remarks Phase I is in warranty. McIntire window replacement and apartment remodel is scheduled to begin May 12th.

3. Half Acre Gymnasium Addition and Renovation

Contractor Groathouse Construction, Inc.
 Laramie, WY
 Guaranteed Maximum Price \$19,800,000
 Contract Substantial Completion Date January 15, 2015

(In Thousands)	Total	Admin	Constr	Design	Tech	FF&E	Misc	Cntngcy
Budget	26,919	912	19,800	2,922	974	974	637	700
Expended	9,516	549	7,594	1,291	0	67	15	0
Obligated	14,393	0	12,206	1,429	0	28	30	700
Un-obligated	3,010	363	0	202	974	879	592	0

Remarks New construction continues on the Phase 1 eastern addition. The general structural and supporting components of the addition are in place. Interior construction is progressing with building systems rough-in, masonry, wall and ceiling systems framing and fireproofing all underway. Exterior building enclosure work is in process, including exterior framing, envelope thermal and moisture protection systems, stone and brick masonry, openings and roofing.

4. Buchanan Center for the Performing Arts

Contractor Sampson Construction Company, Inc.
 Cheyenne, WY
 Guaranteed Maximum Price \$25,700,000
 Contract Substantial Completion Date October 31, 2014

(In Thousands)	Total	Admin	Constr	Design	Tech	FF&E	Misc	Cntngcy
Budget	35,000	960	25,778	3,545	1,208	2,450	500	559
Expended	11,702	680	8,227	2,791	0	4	0	0
Obligated	21,816	138	18,799	426	500	894	500	559
Other Funding	1,248	0	1,248	0	0	0	0	0
Un-obligated	2,730	142	0	328	708	1,552	0	0

Remarks Footing excavation, rebar placement and pouring continue, along with foundation walls. Steel erection is ongoing on the south side and middle area of addition. Exterior framing and sheathing installation are continuing on the north. Concrete slabs on grade and on metal decking are ongoing on the north side of the building.

5. Outreach, Research and Extension Center at Sheridan (ORECS)

Contractor Fletcher Construction Company
 Sheridan, WY
 Bid Price \$1,581,000
 Contract Substantial Completion Date August 13, 2013

(In Thousands)	Total	Admin	Constr	Design	Tech	FF&E	Watt Bldg	Cntngcy
Budget	5,600	95	1,818	211	75	80	3,201	120
Expended	5,607	35	1,968	209	30	56	3,201	108
Obligated	18	0	0	2	16	0	0	0
Addtl Funds	150	0	150	0	0	0	0	0
Un-obligated	125	60	0	0	29	24	0	12

Remarks Contractor is completing several additional items requested by users. Remodel work in Watt building and greenhouse are in warranty.

6. Arena Auditorium Renovation, Phase I

Contractor	Haselden Wyoming Constructors Casper, WY
Guaranteed Maximum Price	\$7,099,599
Contract Substantial Completion Date	September 29, 2014

(In Thousands)	Total	Admin	Constr	Design	Tech	FF&E	Misc	Cntngcy
Budget	12,850	415	10,292	1,065	250	427	40	361
Expended	954	165	0	789	0	0	0	0
Obligated	9,886	1	9,574	276	0	0	0	35
Un-obligated	2,010	249	718	0	250	427	40	326

Remarks Construction began on March 12th. Construction currently consists of demolition and installation of new foundation components. The bids for video production equipment is due April 15th. Advertisement for bids for furniture, fixtures and equipment will be done over the next month.

CHANGE ORDERS

1. Energy Innovation Center

Item 1 Install Haskris Chiller and provide connections	Add:	16,432
Item 2 Add DMC-DVI card to accommodate Mech Dyne	Add:	25,076
Item 3 Add functionality in Auditorium	Add:	6,181
Item 4 Provide Securitron electric strike on door	Add:	4,453
Total Change Order No 56	Add:	52,142

Statement of Contract Amount

Original Contract	\$18,926,514
Change Orders 1 – 56	<u>+ 5,808,617</u>
Adjusted Contract	\$24,735,131
Additional 368 days	

2. White Hall Renovation

Statement of Contract Amount

Original Contract	\$10,355,500
Change Order 1-19	<u>+ 1,226,681</u>
Adjusted Contract	\$11,582,181

3. Half Acre Gymnasium Addition and Renovation

<u>Statement of Contract Amount</u>	
Original Contract	\$19,800,000
Change Orders 3	<u>1,729,582</u>
Adjusted Contract	\$21,529,582

4. Buchanan Center for the Performing Arts

Item 1 Additional vapor barrier and gypsum board in roof areas	Add:	65,630
Item 2 Correct error made in change order #5	Deduct:	111,722
Item 3 Additional sound doors	Add:	55,588
Item 4 Acoustic wall panels not in GMP	Add:	786,368
Item 5 Additions to overhead/fire doors	<u>Add:</u>	<u>121,078</u>
Total Change Order No 7	Add:	916,942

Item 1 Skylight wall modifications	Add:	3,742
Item 2 Interior finishes modifications	Deduct:	6,197
Item 3 Coordination study	Add:	
2,629		
Item 4 Design modifications for code	Add:	7,466
Item 5 Additional domestic and fire valves	<u>Add:</u>	<u>5,961</u>
Total Change Order No 8	Add:	13,601

<u>Statement of Contract Amount</u>	
Original Contract	\$25,700,000
Change Orders 1-8	<u>3,735,398</u>
Adjusted Contract	\$29,435,398

5. Outreach, Research and Extension Center at Sheridan (ORECS)

<u>Statement of Contract Amount</u>	
Original Contract	\$1,581,000
Change Orders 1-7	<u>519,639</u>
Adjusted Contract	\$2,100,639

6. Arena Auditorium Renovation Phase I

<u>Statement of Contract Amount</u>	
Original Contract	\$7,099,599
Change Orders	<u>0</u>
Adjusted Contract	\$7,099,599

2. INFORMATION ONLY ITEM
Development Report, Blalock

CHECK THE APPROPRIATE BOX(ES):

- Work Session
- Education Session
- Information Item
- Other Specify:

BACKGROUND AND POLICY CONTEXT OF ISSUE:

The UW Foundation has agreed to report on donor giving to the University of Wyoming Board of Trustees.

WHY THIS ITEM IS BEFORE THE BOARD:

This report is before the board to advise them of the most current giving totals.

COMMENTS:

There are two spreadsheets within the Monthly Giving Report. The first includes all gifts, while the second focuses on annual fund gifts. Both tables are broken down by the unit receiving the gifts.

University of Wyoming, Foundation
FY 2014 Monthly Giving Report through March
All Gifts

FUND	Current Month Gifts Received		FY 2014 to date							STATE MATCHING	FY 2013 Commitments YTD	
	DONORS	GIFTS	Cash & Cash equivalent			New Commitments YTD					DONORS	GIFTS
			DONORS	OUTRIGHT	GIK	PLEDGE PMTS	NEW PLEDGES	PLANNED GIFTS	TOTAL			
AGRIC	62	\$83,660	878	\$812,197	\$1	(\$202,000)	\$30,000	\$1,284,875	\$1,925,073	\$0	822	\$1,313,696
AHC	16	\$492,743	276	\$83,061	\$544,628	(\$5,000)	\$0	\$0	\$622,689	\$0	331	\$306,600
ALUMNI	409	\$24,115	3188	\$221,402	\$0	(\$400)	\$0	\$0	\$221,002	\$0	2975	\$175,402
A & S	110	\$290,463	1857	\$1,408,778	\$248	(\$94,419)	\$462,650	\$936,000	\$2,713,257	\$0	1931	\$2,985,382
ATHLETICS	1196	\$698,194	5180	\$4,873,092	\$569,835	(\$1,537,478)	\$7,151,000	\$200,000	\$11,256,449	\$7,117,000	5385	\$4,578,445
BUSINESS	53	\$9,066	781	\$518,071	\$0	(\$222,400)	\$75,000	\$0	\$370,671	\$0	778	\$332,491
EDUCATION	36	\$24,970	669	\$371,143	\$0	(\$65,000)	\$0	\$0	\$306,143	\$0	584	\$1,365,505
ENERGY	2	\$400	38	\$2,716,764	\$0	(\$2,703,333)	\$2,000,000	\$0	\$2,013,430	\$2,000,000	46	\$5,767,967
ENGINEERING	61	\$46,652	1090	\$591,543	\$0	(\$113,666)	\$30,000	\$4,020,000	\$4,527,877	\$25,000	1070	\$1,569,410
IENR	4	\$1,493	111	\$616,658	\$0	\$0	\$0	\$0	\$616,658	\$0	67	\$373,455
HEALTH SCI	40	\$26,570	573	\$492,496	\$0	(\$255,000)	\$5,000	\$0	\$242,496	\$0	789	\$473,791
LAW	65	\$44,265	295	\$212,299	\$0	(\$72,500)	\$61,000	\$0	\$200,799	\$0	466	\$1,042,403
LIBRARY	11	\$570	170	\$44,170	\$0	\$0	\$0	\$0	\$44,170	\$0	180	\$182,300
OUTREACH	1502	\$84,553	6357	\$760,834	\$0	(\$10,955)	\$0	\$0	\$749,878	\$0	6802	\$737,157
STU AFFRS	33	\$53,265	629	\$205,091	\$0	(\$50,000)	\$250,000	\$0	\$405,091	\$0	568	\$96,025
UW ART MUS	4	\$1,700	606	\$192,921	\$69,647	(\$30,000)	\$0	\$0	\$232,568	\$0	633	\$3,165,656
UNIV. FUND	28	\$6,353	523	\$72,904	\$0	\$0	\$0	\$0	\$72,904	\$0	656	\$84,302
OTHER GIFTS NOT YET BOOKED	125	\$137,978	471	\$4,438,003	\$0	(\$2,590,119)	\$1,281,830	\$1,550,000	\$4,679,713	\$0	675	\$22,876,944
TOTAL	3,580	\$2,027,010	19,335	\$18,631,426	\$1,184,360	(\$7,952,272)	\$11,346,480	\$7,990,875	\$31,200,869	\$9,142,000	20,264	\$47,426,933
Funds Not Deposited at Foundation					-\$3,167,906							
Foundation Cash In					\$15,463,520							
TOTAL YTD GOAL \$40,000,000								Total Count of All Planned Gifts		18		
**Total Donors does reflect Column totals. Donors may give to more than one unit/division.												

**University of Wyoming, Foundation
FY 2014 Monthly Giving Report through March
Annual Gifts**

FUND	FY 2014 GOALS	Current Month		FY 2014 to date		FY 2013 to same date		FY 2014 AF % of Goal
		DONORS	AMOUNT	DONORS	TOTAL	DONORS	TOTAL	
AGRIC	\$ 100,000	28	\$1,963	677	\$90,271	592	\$86,221	90.27%
AHC	\$ 47,000	9	\$1,740	252	\$46,007	303	\$46,898	97.89%
ALUMNI	\$ 10,000	409	\$24,115	2985	\$194,467	2792	\$149,307	1944.67%
A & S	\$ 407,000	78	\$10,620	1577	\$361,080	1666	\$321,446	88.72%
ATHLETICS	\$ 2,800,000	1095	\$301,458	4812	\$1,929,225	5141	\$1,767,810	68.90%
BUSINESS	\$ 150,000	39	\$7,104	631	\$117,629	633	\$103,266	78.42%
EDUCATION	\$ 71,000	34	\$4,970	565	\$51,582	547	\$50,083	72.65%
ENERGY	\$ 5,000	2	\$400	28	\$8,754	33	\$13,967	175.08%
ENGINEERING	\$ 300,000	46	\$9,045	951	\$196,454	928	\$214,045	65.48%
IENR	\$ 58,000	3	\$90	96	\$43,055	50	\$17,455	74.23%
HEALTH SCI	\$ 131,000	31	\$2,680	506	\$73,545	580	\$80,699	56.14%
LAW	\$ 73,000	60	\$9,040	228	\$46,210	283	\$76,135	63.30%
LIBRARY	\$ 31,000	8	\$420	155	\$27,543	154	\$30,980	88.85%
OUTREACH	\$ 900,000	1502	\$84,553	6348	\$725,279	6783	\$688,492	80.59%
STU AFFRS	\$ 35,000	30	\$2,920	344	\$53,545	541	\$30,455	152.99%
UW ART MUS	\$ 49,000	3	\$1,600	146	\$21,878	217	\$36,513	44.65%
UNIV. FUND	\$ 93,000	28	\$6,353	523	\$72,904	656	\$84,302	78.39%
OTHER GIFTS NOT YET BOOKED	\$ 40,000	13	\$1,583	208	\$35,468	235	\$61,673	88.67%
TOTAL	\$5,300,000	3,300	\$470,653	17,768	\$4,094,895	18,761	\$3,859,747	77.26%

****Total Dnrs do not reflect Column totals. Donors may give to more than one unit/division.**