

An aerial photograph of the University of Wyoming campus, showing a large green lawn with a star-shaped path pattern, surrounded by various university buildings and trees. The image is divided into a grid of six rectangular sections by thin orange lines.

# University of Wyoming Campus Master Plan

## Board of Trustees Update May 16, 2019



# Team

## CORE TEAM



**Caitlyn Clauson**  
Principal-in-Charge  
Campus Planner



**Philip Perlin**  
Project Manager /  
Planner



**Paul Schlapobersky**  
Lead Urban Designer /  
Architect



**Ian Scherling**  
Lead Landscape  
Architect



**Steve Lacker**  
Lead Student Life and  
Housing Specialist

**Andy McClurg**  
Transportation  
Planner



**Chris Sgarzi**  
Athletics & Recreation  
Specialist / Principal

## SUB-CONSULTANTS

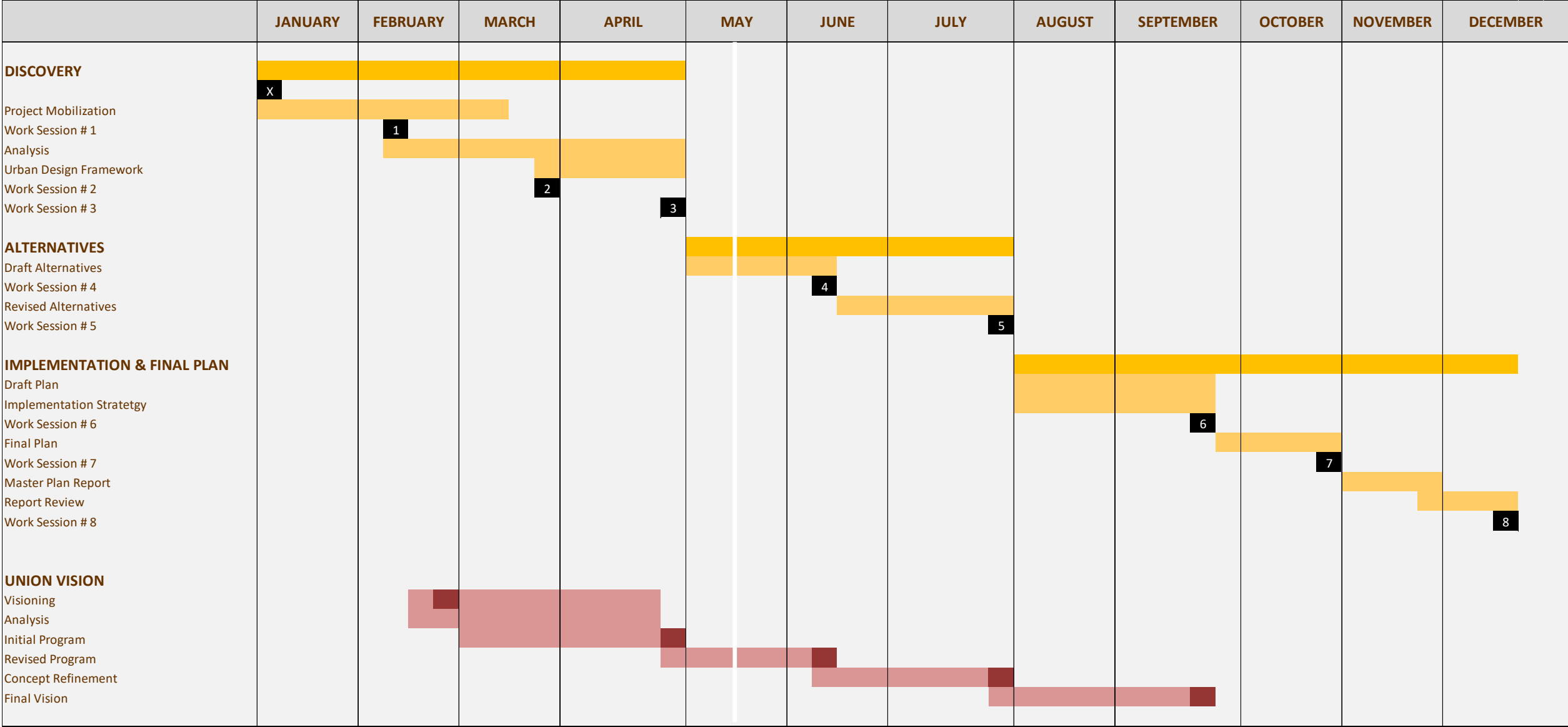
**GLHN**  
Utilities &  
Infrastructure

**Coffey Engineering**  
Civil Engineering &  
Stormwater Management

**Envision Strategies**  
Dining Services

**Heritage Strategies**  
Campus Aesthetics &  
Historic Resources

# Schedule



# Engagement Strategy

## Working Group

### Task Forces

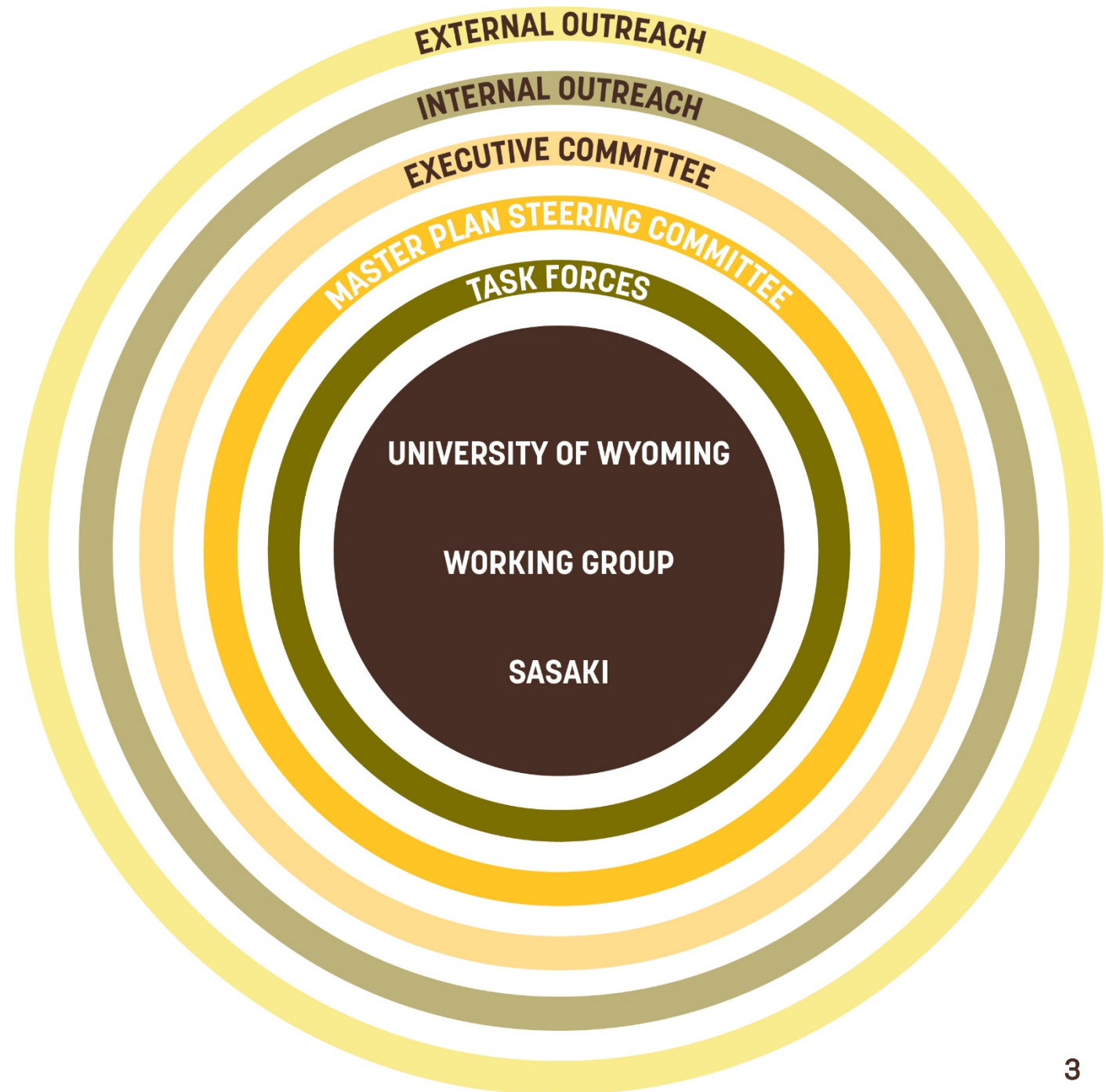
- Campus Design
- Mobility
- Infrastructure, Facilities & Land Management
- Intercollegiate Athletics, Health, and Wellness
- Learning Environments
- Scholarship & Research
- Student Life

## Master Plan Steering Committee

## Executive Committee

## Internal Outreach


## External Outreach





# Outreach to Date

- Task Force Meetings
- Stakeholder Interviews
- Student Sessions
- Engagement Session
- Campus Tours
- Accessibility Tour
- Master Plan Website
- MyCampus Survey
- Collaboration Survey




**University of Wyoming**  
**Campus Master Plan**

Working Together to Plan for the Future of UW

University of Wyoming has commenced a master plan process that will assist the University in physically translating its academic mission and strategic vision through a data-driven, collaborative approach. The University has engaged Sasaki to facilitate the process.

**Upcoming Events**  
May 2nd & 3rd, 2019  
Work Session #3  
Community Engagement Session, 2-3PM, Union East Ballroom  
June, 2019







# Statewide Outreach Itinerary

Five-day statewide immersion tour

Visits in Sheridan and Rock Springs

Drive from Sheridan to Rock Springs to experience the Wyoming landscape

Met with UW alumni, prospective students, and community members

Campus outreach in Laramie



# Topical Investigations

01

Planning  
Foundation

02

Campus Design

03

Mobility

04

Learning  
Environments

05

Scholarship &  
Research

06

Intercollegiate  
Athletics, Health,  
& Wellness

07

Student Life

08

Infrastructure,  
Facilities, & Land  
Management

09

Development  
Framework

# Key Analysis Findings

## Learning Environments and Scholarship

- Need to reinvest in existing academic facilities, notably the historic building stock surrounding Prexy's Pasture
- Overall, there is sufficient instructional capacity to support current enrollments and moderate growth
- Desire for collaborative research space to support goals around interdisciplinary research
- Instructional activity east of 15<sup>th</sup> Street creates logistical challenges

## Landscape and Open Space

- Habitability and comfort in all seasons (landscape needs to work with the climate; windy and cold)
- Core campus has a richness of open spaces
- Landscape has played a critical role in reinforcing campus identity: Prexy's Pasture, State Park / Hollows, Fraternity Mall, Boulderscape

## Mobility

- Perceived lack of proximate and available parking, which is most acute near the historic core
- Pedestrian movement is concentrated west of 15<sup>th</sup> Street, while the area east of 15<sup>th</sup> is more reliant upon vehicular or shuttle access
- Campus shuttle is essential to campus mobility, and is well-regarded
- Strong bike culture on campus
- Accessibility challenges are associated with climate conditions and historic buildings



# Key Analysis Findings

## Campus Structure

- Clear definition and clarity of campus organization west of 15<sup>th</sup>, which dissipates east of 15<sup>th</sup>
- Strong sense of history west of 15<sup>th</sup> Street with newer buildings east of 15<sup>th</sup> Street
- Two distinct campus zones with opportunities for enhanced connections between the two zones
- Connections to nearby University facilities (Hansen Arena and State Veterinary Complex)

## Student Life and Housing

- Need to integrate socializing, dining, living, and studying in a more seamless, intentional, and intuitive way
- Opportunity to better locate and showcase student life functions
- Widespread acknowledgement of the need to improve / replace student housing
- Redevelopment of student housing provides an opportunity to transform the student experience
- Replacement housing will focus on the first year experience, with some focus on the second year experience

## Athletics and Recreation

- Clear definition of space needs; opportunity to improve the spectator experience and revenue generation
- Unique collaborative partnership between athletics and recreation
- Reinforce the connection between the athletics and recreation precinct to the core campus

# Guiding Principles

Advance Strategic Plan Initiatives

Celebrate Wyoming Culture and Identity

Provide Space to Support the Academic and Research Enterprise

Create a Vibrant Campus Life Experience to Support Student Success

Continue to Support a Competitive Athletics Program

Reinforce a Cohesive Campus through Improved Connections, Campus Design, and an Enhanced Public Realm

Create a Strong Sense of Identity in Each Campus Zone

Enhance Connections with the Laramie Community





# Preliminary Ideas to be Tested

- Transition Lewis Street from a campus edge to part of the campus fabric
- Work in tandem with the Legislative Housing Task Force to realize the residential vision articulated in House Bill 293
  - Determine appropriate capacity, building heights, and overall density
  - Develop framework for integrating housing with the broader campus structure (open space, mobility)
  - Formulate plans relating to a parking structure
- Reposition the Union to integrate with the future residential vision for the campus, and to support student life
- Explore opportunities to enhance historic buildings to better contribute to the life of the campus
- Explore options to improve east-west movement (transit corridor, pedestrian promenade)
- Extend the language of the boulderscape east of 15<sup>th</sup> to create a common visual identity
- Test options to minimize 15<sup>th</sup> Street as a campus barrier
- Further define and celebrate Fraternity-Sorority Mall as an open space amenity
- Identify development strategies to address athletics and recreation needs
- Test feasibility of accommodating a rodeo arena on campus
- Improve connections to outdoor recreational amenities
- Create a ceremonial front door to campus