

THE UNIVERSITY OF WYOMING
BOARD OF TRUSTEES' REPORT
May 5-7, 2010

**The Final Report can be found on the University of Wyoming Board of Trustees website at
<http://uwadmweb.uwyo.edu/trustees>**

University of Wyoming Mission Statement (March 2009)

The University of Wyoming aspires to be one of the nation's finest public land-grant research universities. We serve as a statewide resource for accessible and affordable higher education of the highest quality; rigorous scholarship; technology transfer; economic and community development; and responsible stewardship of our cultural, historical, and natural resources.

In the exercise of our primary mission to promote learning, we seek to provide academic and co-curricular opportunities that will:

- Expose students to the frontiers of scholarship and creative activity and the complexities of an interdependent world;
- Ensure individual interactions among students, faculty, and staff;
- Nurture an environment that values and manifests diversity, free expression, academic freedom, personal integrity, and mutual respect; and
- Promote opportunities for personal growth, physical health, athletic competition, and leadership development for all members of the University community.

As Wyoming's only university, we are committed to outreach and service that extend our human talent and technological capacity to serve the people in our communities, our state, the nation, and the world.

The primary vehicles for identifying the specific actions and resource allocations needed to accomplish this complex mission are the University's strategic plans, revised periodically.

TRUSTEES OF THE UNIVERSITY OF WYOMING AGENDA
May 5-7, 2010

WORK SESSIONS

Construction Contracts, Vinzant.....	1
a. GMP for Visual Arts	
b. SAREC Design Build Contract	
c. GMP for Tennis Facility	
Planned Giving, Blalock.....	5
SER Faculty, Allen.....	5
Update on Future Capital Projects, Vinzant.....	6
FY 2011 Budget, Vinzant.....	6
Governor’s Task Force Update, Murdock/Aylward.....	7
Marketing Presentation, Richards.....	8
Ethics Statement, Frost/Lang.....	9
Bond Issue Approval, Vinzant.....	10

BUSINESS MEETING

Roll Call

Approval of Board of Trustees Meeting Minutes
March 4-6, 2010

Approval of Executive Session Meeting Minutes
March 4-6, 2010

Election of Officers
Committee Appointments

Reports
ASUW
Staff Senate
Faculty Senate

Public Testimony

Committee of the Whole

REGULAR BUSINESS

1. Board Committee Reports
 - A. Academics and Research (Allen) – Trustee Palmerlee, Committee Chair 13
 - B. Fiscal and Legal Affairs (Vinzant) – Trustee Haynes, Committee Chair..... 13
 - C. Student Affairs/Athletics/Administration/Information Technology (Axelson)
Trustee Rochelle, Committee Chair 13

CONSENT AGENDA

1. Approval of Contracts and Grants, Gern 14
2. Personnel, Allen 24
3. Bond Issue Approval, Vinzant 49
4. Approval of Construction Contracts, Vinzant 49
 a. GMP for Visual Arts
 b. SAREC Design Build Contract
 c. GMP for Tennis Facility
5. Master List of Degrees, Allen 50
6. Proposed Resolution Recognizing Strategic International Universities, Allen 59
7. ASUW Financial Literacy Endowment Waiver, Axelson 62
8. Proposed Ph.D. Program in Water Resources, Allen 64
9. NCAR Mobilization Expenses, Vinzant 69

New Business

Date of Next Meeting – July 16-18, 2010; Hulett, Wyoming

Adjournment

Information Only Items (see tab):

1. Quarterly Report on Investments, Lowe 71
2. Progress Report/Change Orders, Vinzant 72
3. State Matching Funds for Endowments, Buchanan 76
4. Development Report, Blalock 78

AGENDA ITEM TITLE: Construction Contracts, Vinzant

- a. GMP for Visual Arts**
- b. SAREC Design Build Contract**
- c. GMP for Tennis Facility**

CHECK THE APPROPRIATE BOX(ES):

- Work Session
 Education Session
 Information Item
 Other Specify: Committee of the Whole (Consent Agenda)

a. GMP for Visual Arts

BACKGROUND AND POLICY CONTEXT OF ISSUE:

The 2009 Legislature appropriated funding for the completion of the design and the construction documents for the Fine Arts Facility first phase, Visual Arts Facility. The 2010 Legislature approved the issuance of a \$33 million bond for the remainder of the total project budget for the Visual Arts Facility. The Construction Manager-at-Risk (CMAR), GE Johnson Construction, is completing a final guaranteed-maximum-price to initiate the construction for the facility. The CMAR intends to bid the structural steel and the long lead mechanical items prior to actual on-site construction to protect the price in the market since those material prices are increasing.

As authorized by the Board of Trustees, the Facilities Planning Office, the Visual Arts planning team, the architect and the CMAR have proceeded with the Level III construction documents to permit the on-site construction to begin in July 2010. The architect will provide the necessary early bid packages to permit bidding of the subcontracts related to the structural steel and mechanical items.

The guaranteed maximum price (GMP) will be available prior to the May 2010 Board of Trustees meeting. The anticipated construction budget for the GMP is \$26.9 million. The project scope is being contained within that budget. The preliminary GMP issued in January by the CMAR was within that construction budget. The recent experience with capital project bidding has been favorable.

PRIOR RELATED BOARD DISCUSSIONS/ACTIONS:

- November 19-21, 2008: Trustee approval of the Visual Arts site
- January 24 -26, 2009: Trustee approval of the Visual Arts design team
- July 16, 2009: Trustee approval of capital request for Visual Arts
- August 2009: Trustee approval of Construction Manager-at-Risk

WHY THIS ITEM IS BEFORE THE BOARD:

This item is presented to secure approval of the GMP by the Board of Trustees to initiate the construction phase of the Visual Arts Facility.

ARGUMENTS IN SUPPORT:

The funding has been approved and will be available upon BOT approval of the bond issue (which is scheduled to take place at the May 2010 BOT meeting) to start immediately with construction phase and subcontractor bidding.

ARGUMENTS AGAINST:

None

ACTION REQUIRED AT THIS BOARD MEETING:

Approval of the GMP by the University of Wyoming Board of Trustees to proceed with the construction of the Visual Arts Facility.

PRESIDENT'S RECOMMENDATION:

The President recommends that the Board of Trustees of the University of Wyoming approve the GMP to permit the construction of the Visual Arts Facility.

b. SAREC Design Build Contract

BACKGROUND AND POLICY CONTEXT OF ISSUE:

The SAREC Machine Shed will be located on the Sustainable Agriculture Research and Extension Center (SAREC) which is located 2 miles west of Lingle. The project is funded by the College of Agriculture.

The projected budget for the construction of the Machine Shed is approximately \$184,000. The project proposals include the design and construction of a 60'x120' pre-engineered metal building.

Eight responses from Design Builders were received to the request-for-proposals (RFP) for the machine shed. The project was advertised on the Facilities Planning web site and in Wyoming newspapers. The proposal summaries were then opened and read publicly.

The proposals have been evaluated by the Facilities Planning Office and the director of SAREC. The team considered several attributes including experience with the project scope, construction schedule and process, proposal and references.

The recommendations of the team for three firms in priority order are:

1. Hi Plains Construction, Torrington, WY, with a base proposal of \$152,000 for design and construction of the shed and 98 calendar days for construction completion.
2. Norb Olind Construction, Wheatland, WY, with a base proposal of \$174,900 for design and construction of the shed and 47 calendar days for construction completion.
3. Majors Equipment, Riverton, WY, with a base proposal of \$173,419 for design and construction of the shed and 107 calendar days for construction completion.

Hi Plains Construction successfully completed a previous Design-Build project on the SAREC site.

It is the recommendation of the Facilities Planning Office that Hi Plains Construction, Torrington, WY, be awarded the Design-Build contract for the SAREC Machine Shed. If negotiations are not successful with the first ranked firm then negotiations will be terminated with the first ranked firm and opened with the second ranked firm.

PRIOR RELATED BOARD DISCUSSIONS/ACTIONS:

- September 2001: Trustees introduced to SAREC
- July 2002: Trustees approve property purchase
- September 2003: Trustee approval of Gillespie Property Purchase
- January 2005: Trustee approval of Design-Build Agreement for Office/Laboratory, Animal Handling and Shop Buildings
- May 2007: Trustee approval of Architect for Congregate Residence and Lab Addition
- May 2008: Trustee approval of construction contractor for Congregate Residence and Lab Addition
- March 2010: Trustee approval of Machine Shed Site

WHY THIS ITEM IS BEFORE THE BOARD:

This request is for the Board of Trustees to approve the Design-Builder and the guaranteed maximum price for the placement of a permanent machine shed structure on the approved site.

ARGUMENTS IN SUPPORT:

The funding is available through the College of Agriculture and Natural Resources. The design and construction will commence immediately with the Board of Trustees' approval.

ARGUMENTS AGAINST:

None

ACTION REQUIRED AT THIS BOARD MEETING:

Approval by the University of Wyoming Board of Trustees of the Machine Shed Design-Builder, Hi Plains Construction of Torrington, WY, and the guaranteed maximum price of \$152,000 for the design and construction of the SAREC Machine Shed.

PRESIDENT'S RECOMMENDATION:

The President recommends that the Board of Trustees of the University of Wyoming approve Hi Plains Construction of Torrington, WY and the guaranteed maximum price of \$152,000 for the design and construction of the SAREC Machine Shed.

c. GMP for Tennis Facility

BACKGROUND AND POLICY CONTEXT OF ISSUE:

The Indoor Tennis facility addition will be located adjacent to the existing indoor court building located north of Willett Drive near the UW Baseball Stadium. The facility will take the place of the outdoor tennis courts immediately north of the existing indoor facility.

As directed by the Board of Trustees, the Facilities Planning Office and the Indoor Tennis planning team have proceeded with the Level II and III planning and design. Malone Belton Abel Architects of Sheridan, Wyoming, have provided the design and construction documents to date to achieve the information necessary for Sampson Construction, Construction Manager-at-Risk, to provide a guaranteed maximum price. Both the architect and construction manager-at-risk have been working diligently to achieve the guaranteed maximum price with the goal of completing the project for a February 2011 tennis competition.

The guaranteed maximum price (GMP) will be available prior to the May 2010 Board of Trustees meeting. The anticipated construction budget for the GMP is \$2.75 million. The project scope will include two new courts (in addition to the two existing ones) with room for addition of two more courts within the facility if additional funds become available. Support facilities such as locker rooms, restrooms and storage will be provided initially with the ability to expand within the facility in the future as well.

PRIOR RELATED BOARD DISCUSSIONS/ACTIONS:

- November 2001: Trustees approval of Level I planning
- March 2010: Completion of Level I and proceeding to Levels II and III

WHY THIS ITEM IS BEFORE THE BOARD:

This item is for approval of the GMP by the Board of Trustees to initiate the construction phase of the Indoor Tennis Court Addition.

ARGUMENTS IN SUPPORT:

The funding is available to start immediately with construction.

ARGUMENTS AGAINST:

None

ACTION REQUIRED AT THIS BOARD MEETING:

Approval of the GMP by the University of Wyoming Board of Trustees to proceed with the construction of the Indoor Tennis Facility.

PRESIDENT'S RECOMMENDATION:

The President recommends that the Board of Trustees of the University of Wyoming approve the GMP to permit the construction of the Indoor Tennis Court facility.

AGENDA ITEM TITLE: Planned Giving, Blalock

CHECK THE APPROPRIATE BOX(ES):

- Work Session
- Education Session
- Information Item
- Other Specify:

Vice President for Institutional Advancement Ben Blalock will provide an update to the Board of Trustees. Materials may be distributed at the meeting.

AGENDA ITEM TITLE: SER Faculty, Allen

CHECK THE APPROPRIATE BOX(ES):

- Work Session
- Education Session
- Information Item
- Other Specify:

Provost and Vice President for Academic Affairs Myron Allen will introduce faculty from the School of Energy Resources.

AGENDA ITEM TITLE: Update on Future Capital Projects, Vinzant

CHECK THE APPROPRIATE BOX(ES):

- Work Session
- Education Session
- Information Item
- Other Specify:

Vice President for Administration Douglas Vinzant will provide an update to the Board of Trustees. Materials will be distributed at the meeting.

AGENDA ITEM TITLE: FY 2011 Budget, Vinzant

CHECK THE APPROPRIATE BOX(ES):

- Work Session
- Education Session
- Information Item
- Other Specify:

Vice President for Administration Douglas Vinzant will present materials on the FY 2011 Operating Budget to the Board.

AGENDA ITEM TITLE: Governor's Task Force Update, Murdock/Aylward

CHECK THE APPROPRIATE BOX(ES):

- Work Session
- Education Session
- Information Item
- Other Specify:

In November of 2008, Wyoming Governor Freudenthal formed a task force to examine distance education, video conferencing, and other IP-based communications in Wyoming. UW Vice President for Information Technology Robert Aylward and Associate Provost/Dean of the Outreach School Maggi Murdock were named as co-chairs of this Task Force. In 2009, the Task Force hired consultants to examine the current state of distance education and video conferencing in Wyoming and make recommendations concerning how the state should proceed into the future to ensure that distance education and video conferencing served as strategic assets for the state. The consultants submitted their final reports to the Task Force in the fall of 2009.

In December of 2009, the Task Force made its recommendations to Governor Freudenthal. These recommendations included (1) the creation of a Wyoming Distance Learning Center to support and enhance distance learning at all levels and of all types and (2) the creation of a Video Conference Enterprise to integrate the state's many video conference systems. The 2010 Wyoming Legislature approved biennial appropriations for both recommendations: \$2.5M for the Distance Learning Center and \$1.5M for the Video Conference Enterprise. Both legislative allocations were directed to the University of Wyoming, though they are not part of the University's block grant.

At the present time, the Task Force has hired a coordinator for the Video Conference Enterprise. This coordinator has begun the process of talking to all those involved in video conferencing in Wyoming, including the UW Division of Information Technology and the UW Outreach School, in order to develop and implement a plan for video conference system integration. In addition, the Task Force has initiated a search for a director for the Wyoming Distance Learning Center and nominations for the Distance Learning Council are being accepted. The Governor has directed that the Wyoming Distance Learning Center be located at UW. President Buchanan has designated Beta House as the physical location of the Distance Learning Center's administrative operation at UW. With the hiring of a director for the Center, the work of the Center can begin, based on the work of a statewide group convened in December to envision, discuss, and articulate the possibilities for the Center.

AGENDA ITEM TITLE: Marketing Presentation, Richards

CHECK THE APPROPRIATE BOX(ES):

- Work Session
 Education Session
 Information Item
 Other Specify:

BACKGROUND AND POLICY CONTEXT OF ISSUE:

In March 2008 the Institutional Marketing Department, at the request of President Buchanan, formed the Institutional Marketing Committee. The committee initiated an internal analysis to determine the university's past and present institutional marketing condition. Three main issues came to the forefront: the need to develop an institutional brand, the need to develop a new website and implement a new Content Management System (CMS), and the need to centralize resources and policies.

Over the past year, the Marketing Department, assisted by the Institutional Marketing Committee, has completed a variety of projects including:

- Internal Marketing Analysis
- Streamlined institutional design (Brand Standards Manual and design templates)
- Marketing training workshops
- Website Needs Assessment
- Regional Brand Perception Study
- Tier 1 & 2 Marketing Planning (worksheets)
- Implementation of a Project Management System
- Selection of a Content Management System (CMS)
- Brand Mapping/Discussions
- Brand Development

With the recent completion of the institutional brand, the Board will be introduced to the University's institutional brand platform and architecture. Additionally, updates on the institutional marketing plan and new UW website will be provided.

PRIOR RELATED BOARD DISCUSSIONS/ACTIONS:

The Institutional Marketing Department provided a marketing update in 2009.

WHY THIS ITEM IS BEFORE THE BOARD:

Provide a general update prior to the launch of the new brand, marketing plan and website.

AGENDA ITEM TITLE: Ethics Statement, Frost/Lang

CHECK THE APPROPRIATE BOX(ES):

- Work Session
 Education Session
 Information Item
 Other Specify:

BACKGROUND AND POLICY CONTEXT OF ISSUE:

Federal Acquisition Regulation FAR 52.203-13 requires that all entities that accept federal contracts with a value in excess of \$5,000,000 establish a written code of business ethics and conduct.

The University of Wyoming has been awarded an increasing number of multi-million dollar federal research contracts. In order to comply with federal regulation the Office of Research and Economic Development has drafted the attached Code of Ethical Conduct. This text, which was modeled on the codes adopted by other U.S. universities, has been reviewed by UW's Legal Office, and by deans and interested faculty. Appended to the code is a list of current UW regulations and policies that govern standards of ethical conduct in specific areas including academic honesty, confidentiality and privacy, conflict of interest and conflict of commitment, human resources, financial, operational and administrative transactions, and compliance with applicable laws and regulations.

PRIOR RELATED BOARD DISCUSSIONS/ACTIONS:

The Academics and Research Subcommittee discussed this document at its November and March meetings.

WHY THIS ITEM IS BEFORE THE BOARD:

The UW Code of Ethical Conduct introduces no new regulation but includes the Trustees as being committed to ethical conduct.

ARGUMENTS IN SUPPORT:

Board approval in support of the University of Wyoming Code of Ethical Conduct signals to the UW community a shared commitment to professional standards of integrity and ethical conduct.

ARGUMENTS AGAINST:

None

ACTION REQUIRED AT THIS BOARD MEETING:

Recommend review and approval of the Code of Ethical Conduct.

PRESIDENT'S RECOMMENDATION:

The President recommends approval by the Board of Trustees.

AGENDA ITEM TITLE: Bond Issue Approval, Vinzant

CHECK THE APPROPRIATE BOX(ES):

- Work Session
 Education Session
 Information Item
 Other Specify:

BACKGROUND AND POLICY CONTEXT OF ISSUE:

As authorized by the Board of Trustees, the University's 2011-2012 biennium budget request included an item seeking authority to issue \$33 million in revenue bonds for construction of a new Visual Arts Facility, using federal mineral royalty funds for payment of the debt, and \$6 million in revenue bonds for renovation of Downey Hall, using auxiliary service revenue generated by Residence Life and Dining Service. The legislature approved these requests in March 2010.

Additionally, a portion of the proceeds of the current issue, Series 2010A Bonds, will be used to advance refund a portion of the Trustees' Facilities Improvement Revenue Bonds Series 2001, currently outstanding in the amount of \$6,425,000. Current interest rates are better than those of the 2001 bond series, providing the University with an opportunity to reduce the interest costs for this bond series.

A brief description of each of the capital projects supported by this bond issue follows.

Visual Arts Project. The \$33,000,000 Visual Arts Project encompasses construction of a Visual Arts Facility. The Visual Arts Facility will be located on University owned property east of the American Heritage Center building on the east end of campus. The new facility will provide space for expanding existing Art programs and space for new Art programs. Art departments that will be housed in the new facility include: ceramics, drawing, painting, printmaking, graphic design, art history and sculpture. The new facility will allow Art programs to relocate from the existing Fine Arts building and the old student housing complex north of the Fine Arts Building. Construction is expected to begin mid-summer 2010 and be completed in 18 months.

Residence Hall Renovation. Downey Hall, an 8-story, 203 room facility, will be renovated beginning in the summer of 2010. Continuing planned improvements in the University's residence halls, this is the third residence hall to undergo renovations. The resident student population will be accommodated within the remaining halls during the construction period.

The estimated renovation of \$6 million will provide improved life, safety and infrastructure support to each student room while improving the accessibility of the facility. The renovations will include fire suppression and fire alarm systems. Doors to each room will be widened to accommodate the mobility impaired, with new security hardware for individual safety. The electrical power distribution will provide individual circuits to each room rather than the present four rooms per circuit. Completely accessible rooms with a centrally accessible bathroom will

be provided on alternate floors to accommodate persons with disabilities. Lighting will be improved throughout the structures providing multilevel lighting in each room and higher levels in the corridors. The residence hall will have a student lounge on every floor rather than on alternating floors. It is expected that the renovations will be complete in the Fall of 2011.

With this item, the Board is asked to approve the issuance of up to \$44.9 million in revenue bonds, referred to as The Trustees of the University of Wyoming Facilities Improvement and Refunding Revenue Bonds Series 2010. [*Note: \$39 million is included for Visual Arts and Downey Hall, and approximately \$6 million is included in the bond issue for the Series 2001 refunding.*] The debt is structured to consist of tax-exempt revenue bonds, Build America Bonds (BAB), and Recovery Zone Economic Development Bonds (RZEDB). The BABs and RZEDBs are financing opportunities available as a result of the American Recovery and Reinvestment Act (ARRA) and provide a direct subsidy paid by the U.S. Treasury. The University will utilize these subsidy bonds in combination with tax-exempt bonds to the extent it makes economic sense. The precise mix of bonds is under development and will be presented to the Board at the May 2010 meeting.

The following bond documents will be presented to the Trustees for review and approval: 1) the bond resolution (which includes language declaring the University a Recovery Zone, a necessary step to utilize the RZEDB financing); 2) the Preliminary Official Statement (POS); 3) the bond purchase agreement; and 4) the paying agent and registrar agreement.

Representatives from the University's bond counsel, Kutak Rock (Denver, Colorado) and investment banking firm, George K. Baum & Company (Cheyenne and Denver), will be present to respond to any questions regarding the bond issue, bond documents, and process for pricing and marketing the bonds.

PRIOR RELATED BOARD DISCUSSIONS/ACTIONS:

- July 2009: Trustees approved 2011-2012 capital construction budget request including \$39 million of bonding authority for Visual Arts and Downey Hall.
- March 2010: The Board was informed that the 2010 legislature authorized the capital construction budget request and briefed on the mix of bonds to be utilized in the upcoming bond issue.

WHY THIS ITEM IS BEFORE THE BOARD:

The Board's approval to issue bonds is required by state law (University Securities Law W.S. 21-17-402 through 21-17-450) and Board policy. Following adjournment of the Business Meeting of the Board, officers of the Board will be asked to sign legally required bond documents.

ARGUMENTS IN SUPPORT:

The Board authorized the University to seek legislative approval to issue debt for the Visual Arts facility and renovation of Downey Hall in the biennial budget request in August 2009.

The Governor supported the University's request in his FY 2011-2012 biennial budget recommendations to the Legislature, and legislative approval has been provided for the bond issue.

On April 12, 2010, the Governor issued an executive order transferring \$18 million in RZEB authority from Lincoln County to the University of Wyoming.

The Board has directed University officials to identify and bring forward opportunities for refunding when borrowing rates are favorable and interest savings are material.

Construction documents (including a Guaranteed Maximum Price) for the Visual Arts Facility are under development, and construction is scheduled to begin in July 2010.

ARGUMENTS AGAINST:

None

ACTION REQUIRED AT THIS BOARD MEETING:

Board approval of the 2010 bond series in the amount of up to \$44.9 million in revenue bonds, \$39 million as authorized by the 2010 legislature and approximately \$6 million for refunding of the 2001 bond series. In addition, as required by law officers of the Board will sign the appropriate bond documents immediately following adjournment of the Board meeting.

PRESIDENT'S RECOMMENDATION:

The President recommends approval of the proposed 2010 bond series as described in the item above.

1. Committee of the Whole: REGULAR BUSINESS
Board of Trustees Committee Reports

CHECK THE APPROPRIATE BOX(ES):

- Work Session
 Education Session
 Information Item
 Other Specify: Committee of the Whole (Regular Business)

A. Academics and Research Committee (Allen)

Trustee Palmerlee, Committee Chair

B. Fiscal and Legal Affairs Committee (Vinzant)

Trustee Haynes, Committee Chair

C. Student Affairs/Athletics/Administration/Information Technology Committee (Axelson)

Trustee Rochelle, Committee Chair

1. Committee of the Whole- CONSENT AGENDA
Approval of Contracts and Grants, Gern

CHECK THE APPROPRIATE BOX(ES):

- Work Session
- Education Session
- Information Item
- Other Specify: Committee of the Whole (Consent Agenda)

Sponsored Programs

The following sponsored programs are accepted subject to compliance with the University's policies on classified information and protection of human subjects. This report covers the period February 2010 through March 2010.

February 2010

Sponsor	Amount	Principal Investigator (PI)	Co-PI	Dept	Description
Corp for Public Broadcasting	\$25,600	Dempsey, Kathy		Wyoming Public Radio	Stabilizaiton Grant
Design Workshop	\$6,900	Lieske, Scott Nobles		WY Geographic Info Sci Ctr	Casper Comprehensive Plan
FMC Corp	\$50,000	Fan, Maohong	Argyle, Morris Dee & Towler, Brian Francis	Chemical/Petroleum Engr	Remediation Methods for Se and As Leaching from Fly Ash Containing Trona FGD Residue
Fremont County	\$3,000	Scott, Walt D		Psychology	Fremont CO School Dist 38 Dropout Prevention
General Electric	\$40,000	Ackerman, John F		Chemical/Petroleum Engr	Refractory coatings for SIC Fiber & high temperature CMC's
Mellon Foundation	\$29,000	Hartman, Ronald	Schmidt, Lawrence O.	Botany	Imaging Type Specimens of Vascular Plants and Critical Literature at the Rocky Mountain Herbarium
Neptune Research	\$1,900	Perry, Marvin		Civil Engineering	Creep Testing of Fiberglass FRP
Northern CO, Univ of	\$284,190	Mayes, Robert	Shader, Bryan L.	Sci & Mth Teach Ctr	Mathematics Teacher Leadership Center
Project Orianne	\$5,000	Keinath, Douglas		WY Natural Diversity Database	Midget Faded Rattlesnake
Spanish Consulate	\$4,000	Mellizo, Carlos C.		Modern/Classical Lang	Utilitarianism in Spain and Other Cultural Trends
TD Williamson	\$1,900	Walrath, David	Perry III, Marvin C.	Mechanical Engineering	Creep Rupture Tests
US Dept Ed	\$197,160	Gruen, David		Student Financial Aid	Pell Grant 09-10
US Dept Ed	\$584	Gruen, David		Student Financial Aid	Academic Competitive Grant (ACG) 09-10
US Dept Ed	\$44,764	Gruen, David		Student Financial Aid	National Science & Mathematics Access to Retain Talent (SMART) 09-10
US Dept Energy	\$115,000	Roddick, Dean		Chemistry	Highly Oxidizing Excited States

Sponsor	Amount	Principal Investigator (PI)	Co-PI	Dept	Description
US Dept Health & Human Services NIH	\$27,667	Woodbury, Charles		Zoology	Nociceptor Maturation & Response to Injury
US Dept Health & Human Services NIH	\$24,830	Flynn, Francis		Zoology	Neuropeptides and vasopressin
US Dept Health & Human Services NIH	\$7,500	Hubbell, Colleen		WWAMI	WY Outreach Partnership
US Dept Interior BLM	\$5,000	Oakleaf, James R.		WY Geographic Info Sci Ctr	Sage Grouse Lek Survey On-line Database and Application
US Dept Interior BLM	\$25,000	Beck, Jeffrey L		Renewable Resources	Greater Sage-Grouse Habitat Comparison
US Dept Interior USGS	\$150,000	Cornish, Todd & Kauffman, Matthew	Edmunds, David R.	Veterinary Science & Zoology	Population Level Impacts of Chronic Wasting Disease in Wyoming Mule Deer
US Dept Interior USGS	\$2,851	Keinath, Douglas	Griscom, Hannah Rose & Hubert, Wayne A.	WY Natural Diversity Database	Songbird Inventory
Various Sponsors	\$12,681	Wolverton, Diane		WY Sm Bus Dev Ctr	Procurement Technical Assistance Center Program (GRO-Biz PTAC)
Various Sponsors	\$525	Kleinhesselink, Katie		Wyoming Union	Match to WY Connecting Campus and Community 09-10
Various Sponsors	\$2,322	Root-Elledge, Sandra Lee		Wyoming Inst for Disabilities	Fee Book Income
Various Sponsors	\$880	Wolverton, Diane	Holler, Leonard Allen	WY Sm Bus Dev Ctr	Procurement Technical Assistance Program GRO-Biz
Various Sponsors	\$4,234	Wolverton, Diane	Kline, Jill K.	WY Sm Bus Dev Ctr	Small Business Development Centers
Various Sponsors	\$478	Parker, Sylvia D.		Sci & Mth Teach Ctr	SMTC Support
Various Sponsors	\$8,500	MacLean, William		Wyoming Inst for Disabilities	University Affiliated Core Training
Various Sponsors	\$303	Root-Elledge, Sandra Lee		Wyoming Inst for Disabilities	University Affiliated Core Technical Assistance

Sponsor	Amount	Principal Investigator (PI)	Co-PI	Dept	Description
Various Sponsors	\$1,776	Redder, Alan		WY Natural Diversity Database	Database Management
Various Sponsors	\$1,400	McDonald, David		Zoology	Microsatellite DNA Analysis of Black Bears
WY Community Fndtn	\$2,770	Macnee, Carol L		School of Nursing	Workforce Project of Wyoming
WY Dept Environmtl Quality	\$3,301,032	Scott, James L. & Blomfelt, Eric		Physical Plant & Risk Management	Utilities
WY Dept Transportation	\$34,715	Kunkel, Paul		Fleet Operations	Planning Funds
WY Game & Fish	\$80,000	Kauffman, Matthew		Zoology	Elk-wolf habitat relations
WY Game & Fish	\$3,300	McDonald, David		Zoology	Pocket gopher genetics
WY Victim Services	\$3,897	Wambeam, Rodney A.		WY Survey & Analysis Ctr	Web-based Training
WY Workforce	\$10,000	Butler, Steven	Furgeson, Thomas Alan & Anatchkova, Bistra B.	WY Survey & Analysis Ctr	WINDS III Phase 2

Sponsored Programs

TOTAL 2/2010 \$4,520,659

Total From 7/2009 \$15,553,079

Total From 8/2009 \$15,391,538

Total From 9/2009 \$11,151,814

Total From 10/2009 \$7,377,988

Total From 11/2009 \$3,080,837

Total From 12/2009 \$5,214,882

Total From 1/2010 \$21,587,332

7/2009-2/2010 **\$83,878,129**

INSTITUTIONAL AWARDS WYOMING DEPARTMENT OF ENVIRONMENTAL QUALITY FISCAL YEAR 2010

William A. Gern/Robert Ballard; VP's Research Office - Great Plains Gasification.	WYDEQ49812	\$	35,000,000
Mark A. Northam; Schl of Energy Resources - Advancement of Energy Resources.	WYDEQ49811	\$	8,710,283
Mark A. Northam; Schl of Energy Resources - Clean Coal Technology Fund.	WYDEQ49813	\$	2,521,730
	TOTAL Inst 2/2010	\$	<u><u>46,232,013</u></u>

GRAND TOTAL **\$130,110,142**

March 2010

Sponsor	Amount	Principal Investigator (PI)	Co-PI	Dept	Description
Battelle	\$7,500	Bell, David A.		Chemical/Petroleum Engr	Gasification Process Modeling
CO St Univ	\$6,944	Jarvis, Donald		Molecular Biology	Development of a novel subunit vaccine targeting multiple alphaviruses
Coastal Restoration & Enhancmt through Sci & Tech	\$39,857	Barbier, Edward Burr		Economics/Finance	Quantifying Ecocystem Services in Coastal Louisiana
IA St Univ	\$46,596	Kobulnicky, Henry A.		Physics/Astronomy	Intermediate-Mass Star Formation
ID Nat'l Laboratory	\$20,000	Foulke, Thomas K.		Ag Economics	Coal Gasification and products feasibility
MT St Univ	\$25,000	Wambeam, Rodney A.		WY Survey & Analysis Ctr	Mispercept/Peer Alcohol Norms
National Geographic	\$19,950	Jackson, Stephen		Botany	Florida burning
Optimum Quality Grains	\$10,494	Chen, Po		Geology/Geophysics	Unified Adjoint Method
Power Resources	\$71,500	Taylor, David T.	Foulke, Thomas K. & Coupal, Roger H.	Ag Economics	Economic Impact Analysis for Cameco Resources
Rocky Mtn Elk Fndtn	\$10,000	Kauffman, Matthew		Zoology	Absaroka Elk Ecology Project
Rocky Mtn Elk Fndtn	\$10,000	Kauffman, Matthew		Zoology	Habitat use, interchange of elk from feedgrounds in brucellosis endemic area - Yr. 2
Small Business Admin	\$16,665	Wolverton, Diane	Kline, Jill K.	WY Sm Bus Dev Ctr	Small Business Development Centers
Supercritical Fluids	\$2,500	Radosz, Maciej		Chemical/Petroleum Engr	Supercritical Fluids Thermodynamic Data for Polmer Systems
Swedish Nuclear Fuel & Waste Mgmt	\$164,700	Humphrey, Neil		Geology/Geophysics	Greenland Analog Project SKB
TX, Univ of	\$17,982	Boyles, Stephen		Civil Engineering	Safety Implications of Active Traffic Strategies
United Way	\$56,000	Fleak, Tabitha Rae		Cooperative Ext Serv	Rock Springs 4-H Afterschool Program
US Dept Ag APHIS	\$22,488	Collier, Timothy		Renewable Resources	WY Weeds/Gypsy Moth Survey
US Dept Ag CSRE	\$116,000	Russell, Justina		Cooperative Ext Serv	Federally Recognized Tribes Extension Program

Sponsor	Amount	Principal Investigator (PI)	Co-PI	Dept	Description
US Dept Ag FS	\$120,000	Ben-David, Merav	Flaherty, Elizabeth A.	Zoology	Small mammal responses to Tongass young-growth thinning
US Dept Ag NIFA	\$19,172	Stobart, Robert		Animal Science	Obj Measures of Wool Fibers
US Dept Ag NIFA	\$149,946	Zhu, Meijun	Gomelsky, Mark	Animal Science	C-di-GMP Signaling in E. coli O157:H7 Biofilm Formation and Colonization of the Gastrointestinal Tract of Beef Cattle
US Dept Ed	\$277,623	Root-Elledge, Sandra Lee		Wyoming Inst for Disabilities	Assistive Technology Resources (WATR)
US Dept Ed	\$108,168	Gruen, David		Student Financial Aid	Pell Grant 09-10
US Dept Ed	\$11,948	Gruen, David		Student Financial Aid	National Science & Mathematics Access to Retain Talent (SMART) 09-10
US Dept Ed	\$3,500	Gruen, David		Student Financial Aid	Teacher Educ Assistance for College & Higher Ed (TEACH) 09-10
US Dept Ed	\$11,495	Gruen, David		Student Financial Aid	Pell Grant Administrative Allowance
US Dept Interior BLM	\$23,000	Bump, Benjamin	Peacock, Cheryl K.	Inst of Envrnmtl & Nat Resources	WY Pinedale Field Office Warren Bridge Trail
US Dept Interior USGS	\$85,926	Hall, Robert		Zoology	Colorado River food web
US Nat'l Aero & Space Admin	\$68,170	Howell, Robert R.		Geology/Geophysics	Volcanic Processes on Io
US Nat'l Sci Fndtn	\$140,000	Skinner, Donal		Zoology	Prolactin Regulation by the Pars Tuberalis
US Nat'l Sci Fndtn	\$42,164	Rodi, Alfred	Wang, Zhien	Atmospheric Science	King Air Natl Facility
UT St Univ	\$35,217	McInroy, John E.		Electrical Engineering	Quality Space Imagery for Leo/Geo Operations
Various Sponsors	\$5,750	Wambeam, Rodney A.		WY Survey & Analysis Ctr	Conduct the Community Level Prevention Framework Evaluation 2010
Various Sponsors	\$500	Lovvorn, James		Zoology	Lovvorn Research Fund
Various Sponsors	\$880	Wolverton, Diane		WY Sm Bus Dev Ctr	Procurement Technical Assistance Center Program (GRO-Biz PTAC)

Sponsor	Amount	Principal Investigator (PI)	Co-PI	Dept	Description
Various Sponsors	\$525	Kleinhesselink, Katie		Wyoming Union	Match to WY Connecting Campus and Community 09-10
Various Sponsors	\$520	Root-Elledge, Sandra Lee		Wyoming Inst for Disabilities	Fee Book Income
Various Sponsors	\$3,698	Wambeam, Rodney A.		WY Survey & Analysis Ctr	Conduct the Community Level Prevention Framework Evaluation
Various Sponsors	\$113	Redder, Alan		WY Natural Diversity Database	Database Management
Wamsutter, Town of	\$25,000	Clarke, Pamela	Hathaway, Brent A. & Clark, Suzanne & Kobulnicky, Carol J. & Hunt, David M. & Krueger, Kem P.	School of Nursing	Wamsutter Comm Health Assmnt
Western St Arts Federation	\$50,000	Moldenhauer, Susan		Art Museum	Neltje- Visual Arts Touring 2009
WY Animal Damage Mgmt Board	\$20,000	Mills, Kenneth W.		Veterinary Science	Rabies Surveillance/Sampling
WY Arts Council	\$6,168	Kirkaldie, Katherine	Selting, Leigh W. & Wilson, Margaret Ann & Knight, Marsha Fay	Theatre/Dance	Grants to Organizations: Multiple Projects
WY Arts Council	\$334	Baumbach, Diana L		Art Department	Gallery 211 - Arts Partnerships in Downtown Laramie
WY Assoc of Consvrtn Distrcs	\$63,280	Oakleaf, James R.		WY Geographic Info Sci Ctr	SuiteWater
WY Commission for Nat'l & Community Srvc	\$5,000	Drever, Anita Isabel		WY Survey & Analysis Ctr	Learn/Serve WY Prog Eval 2010
WY Community Fndtn	\$2,439	Macnee, Carol L		School of Nursing	Workforce Project of Wyoming
WY Dept Ag	\$20,000	Edwards, Jeffrey		Cooperative Ext Serv	High Tunnel Construct Wksp

Sponsor	Amount	Principal Investigator (PI)	Co-PI	Dept	Description
WY Dept Ag	\$17,103	Islam, Md	Krall, James M.	Plant Sciences	Fenugreek Assessment
WY Dept Ag	\$3,401	Mesbah, Abdelouhab		Plant Sciences	High Tunnel Project
WY Dept Ag	\$143,883	Latchininsky, Alexandre	Franc, Gary D.	Renewable Resources	Wyoming CAPS Program Infrastructure
WY Dept Commerce	\$13,636	Gruen, David		Student Financial Aid	WY Community Col Com State Student Incentive Program LEAP
WY Dept Ed	\$17,357	Wardlaw, Mary		Family/Consumer Sci	Youth Nutrition Education
WY Dept Ed	\$228,499	Kansky, Robert J		Sci & Mth Teach Ctr	A Comprehensive Approach to Improving Mathematics Achievement in Carbon County (CCMI)
WY Dept Ed	\$242,018	Mayes, Robert	Myers, James D. & Lyford, Mark E.	Sci & Mth Teach Ctr	Quantitative Reasoning in Science, Technology, Engineering, and Mathematics Project (QR STEM)
WY Dept Ed	\$40,500	Drever, Anita Isabel		WY Survey & Analysis Ctr	21st CCLC 2010
WY Dept Employment	\$23,655	Dorssom, Michael D	Ferguson, Thomas Alan	WY Survey & Analysis Ctr	Cognitive Interviews on Wyoming Department of Employment New Questionnaire
WY Dept Environmtl Quality	\$316,902	Piri, Mohammad		Chemical/Petroleum Engr	Clean Coal Technology Fund
WY Humanities Council	\$2,000	Graham, Andrea M		American Studies	The Art of the Hunt
WY Humanities Council	\$2,000	Munoz, Eddie		Administration of Justice	Opening Day Baseball Project
WY Livestock Board	\$31,900	Mills, Kenneth W.	Montgomery, Donald Lee	Veterinary Science	FPA equipment for continued performance of Brucellosis serology
WY Offc Homeland Security	\$2,997	Gray, Stephen		Civil Engineering	Hazard Mitigation Update
WY Offc Homeland Security	\$33,000	Ferguson, Thomas Alan	Baird, Grayson & Anatchkova, Bistra B.	WY Survey & Analysis Ctr	Public Knowledge and Perception of Wyoming Hazards and Hazards Mitigation

2. Committee of the Whole- CONSENT AGENDA

Personnel, Allen

CHECK THE APPROPRIATE BOX(ES):

- Work Session
 Education Session
 Information Item
 Other Specify: Committee of the Whole (Consent Agenda)

A. Items for Action Recommended by the President

APPOINTMENTS

1. Administrators

It is recommended to the Trustees of the University of Wyoming that the following administrator appointments be approved as indicated.

Research Office

<u>Name</u>	<u>Rank</u>	<u>Salary</u>	<u>Appointment Period</u>
-------------	-------------	---------------	---------------------------

Enhanced Oil Recovery Institute

Mohrbacher, J. David	Director	\$190,008/FY	03/29/2010 to 06/30/2010
-----------------------------	----------	--------------	--------------------------

David Mohrbacher received a B.S. (1976) and an M.S. (1981) in Chemical Engineering from the University of Kansas. Mr. Mohrbacher has been the principal program manager for URS located in Denver, Colorado, since 1997.

2. Faculty

It is recommended to the Trustees of the University of Wyoming that the following faculty appointments be approved as indicated.

College of Agriculture and Natural Resources

<u>Name</u>	<u>Rank</u>	<u>Salary</u>	<u>Appointment Period</u>
-------------	-------------	---------------	---------------------------

Department of Renewable Resources

Hufford, Kristina M.	Assistant Professor	\$85,008/FY	03/29/2010 to 06/30/2010
-----------------------------	---------------------	-------------	--------------------------

Kristina Hufford received a B.A. (1993) in Environmental Sciences from the University of California, Berkeley, and a Ph.D. (2001) in Botany from the University of Georgia, Athens. Dr. Hufford has been a research scientist at the University of Western Australia and Kings Park and Botanic Garden since 2007.

College of Education

<u>Name</u>	<u>Rank</u>	<u>Salary</u>	<u>Appointment Period</u>
-------------	-------------	---------------	---------------------------

Department of Professional Studies

Range, Bret G.	Assistant Professor	\$58,800/AY	08/17/2010 to 06/30/2011
-----------------------	---------------------	-------------	--------------------------

Bret Range received a B.S. (1996) and an M.S. (1999) in Education from Missouri State University, and a Ph.D. (2009) in Educational Leadership from the University of Arkansas. Dr. Range has been principal of McBride Elementary School since 2003.

Scherz, Susan D.	Assistant Professor	\$57,000/AY	08/17/2010 to 06/30/2011
-------------------------	---------------------	-------------	--------------------------

Susan Scherz received a B.A. (1973) in English from Capital University, an M.A. (1994) in Education Administration and an Ed.D. (2004) in Education Leadership from Northern Arizona University. Dr. Scherz has been an Assistant Professor at Idaho State University.

College of Health Sciences

<u>Name</u>	<u>Rank</u>	<u>Salary</u>	<u>Appointment Period</u>
-------------	-------------	---------------	---------------------------

Division of Social Work

Kim, Wook-Jin	Instructor	\$52,008/AY	08/17/2010 to 06/30/2011
----------------------	------------	-------------	--------------------------

Wook-Jin Kim received a B.S. (2002) in Sociology from Korea University, an M.S. (2004) and a Ph.D. (expected in 2010) in Social Service Administration from the University of Chicago. Dr. Kim has been a teaching assistant and adjunct faculty at the University of Chicago, School of Social Service Administration, since 2007. The title of this tenure-track position will convert to Assistant Professor upon receipt of documentation of degree completion.

3. Academic Professionals

It is recommended to the Trustees of the University of Wyoming that the following extended-term-track academic professional appointments be approved as indicated.

College of Health Sciences

<u>Name</u>	<u>Rank</u>	<u>Salary</u>	<u>Appointment Period</u>
-------------	-------------	---------------	---------------------------

Division of Social Work

Dole-Izzo, Elizabeth S.	Assistant Lecturer	\$50,004/FY	02/12/2010 to 06/30/2010
--------------------------------	--------------------	-------------	--------------------------

Elizabeth Dole-Izzo received a B.S. (1996) in Human Development and Family Studies and an M.S. (2002) in Social work from Colorado State University. Ms. Dole-Izzo has been an extended-term lecturer at the University of Wyoming since 2006.

CHANGES IN APPOINTMENTS

1. Administrators

It is recommended to the Trustees of the University of Wyoming that the changes in appointments for the following full-time administrators be approved as indicated.

College of Engineering and Applied Science

<u>Name</u>	<u>Rank</u>	<u>Salary</u>	<u>Appointment Period</u>
Barrett, Steven F.	Associate Dean	\$104,796/AY	07/01/2010 to 06/30/2015

Professor Barrett will serve a five-year term. He is a tenured Associate Professor in the Department of Electrical and Computer Engineering.

PROMOTIONS

1. Faculty

It is recommended to the Trustees of the University of Wyoming that the following faculty promotions be approved as indicated.

College of Agriculture and Natural Resources

<u>Name</u>	<u>New Rank</u>
<i>Department of Family & Consumer Sciences</i>	
Meyer, Sonya Sue	Professor
<i>Department of Molecular Biology</i>	
Fay, David S.	Professor
Sylvester, Anne W.	Professor

College of Arts & Sciences

<u>Name</u>	<u>New Rank</u>
<i>Department of Physics & Astronomy</i>	
Dale, Daniel A.	Professor
<i>Department of Political Science</i>	
Garrison, Jean A.	Professor
Pickett, Brent L.	Professor
<i>Department of Zoology & Physiology</i>	
Ben-David, Merav	Professor
Hall, Robert O. Jr.	Professor

College of Business

<u>Name</u>	<u>New Rank</u>
<i>Department of Accounting</i>	
Fleischman, Gary M.	Professor

College of Engineering and Applied Science

<u>Name</u>	<u>New Rank</u>
<i>Department of Electrical and Computer Engineering</i>	
Muknahallipatna, Suresh	Professor

College of Health Sciences

<u>Name</u>	<u>New Rank</u>
<i>Family Medicine Residency Program - Cheyenne</i>	
Trelease-Bell, Amy L.	Clinical Associate Professor
<i>School of Pharmacy</i>	
Hilaire, Michelle L.	Clinical Associate Professor
Petrie, Jennifer L.	Clinical Associate Professor

PROMOTIONS

2. Academic Professionals

It is recommended to the Trustees of the University of Wyoming that the following promotions of academic professionals be approved as indicated.

College of Law

<u>Name</u>	<u>New Rank</u>
Burke, N. Denise	Senior Lecturer

TENURE APPOINTMENTS WITH PROMOTION

It is recommended to the Trustees of the University of Wyoming that the following faculty be granted tenure with a promotion in rank.

College of Agriculture and Natural Resources

Name

New Rank

Department of Agricultural and Applied Economics

Bastian, Christopher Todd

Associate Professor

Professor Bastian received his Ph.D. in Agricultural and Resource Economics from Colorado State University (2004). Before receiving his Ph.D. and becoming a faculty member at UW in the fall of 2005, he served as the Agricultural Marketing Specialist from 1993 to 2005. His current teaching responsibilities include agribusiness management, agricultural commodities and futures markets, and advanced agricultural marketing. His scholarly activities focus on natural resource-based business economics issues. During his time as faculty member he has received national and regional awards for his past extension activities, received over \$1 million dollars in grants, and published numerous refereed and non-technical articles or publications.

Department of Molecular Biology

Liberles, David A.

Associate Professor

Professor Liberles (Ph.D. California Institute of Technology, Pasadena, CA.,1997) was appointed as Assistant Professor in the Department of Molecular Biology in 2005 following 6 years as a research group leader in Scandinavia. He teaches in bioinformatics and computational biology. He is also involved with the bioinformatics core funded by INBRE, as co-director of the bioinformatics effort and running a summer undergraduate research program in bioinformatics. He has also been involved in establishing bioinformatics education at Sheridan College. He is chair of the Molecular Biology graduate program. He also serves on the editorial board of four journals, including serving as Editor-in-Chief of Trends in Evolutionary Biology. He has published numerous articles in the peer-reviewed scientific literature, has edited two books, and has given numerous invited lectures regionally, nationally, and internationally. He currently receives funding from NSF.

Department of Renewable Resources

Paige, Virginia B.

Associate Professor

Professor Paige (Ph.D., University of Arizona, 2000) was appointed to the Department of Renewable Resources in 2004. She developed and directs the water resources extension program, provides training and extension services in the fields of water quality and quantity, and information services to researchers, State and Federal agencies and state clientele. Her research is focused on the measurement and modeling of hydrologic and erosion processes on rangeland watersheds.

College of Arts & Sciences

Name

New Rank

Department of Art

Carlisle, Ashley H.

Associate Professor

Professor Carlisle (MFA, University of Georgia, 2002) was appointed to the Art faculty in 2003. An eminent sculptor, Professor Carlisle teaches undergraduate students all levels of this artistic form from introductory to advanced classes. During her time at UW, her work has been seen at 30 juried or invitational exhibits at international, national and regional venues, the hallmark of creative activities. Professor Carlisle received the Arts and Sciences "Extraordinary Merit in Teaching" award in 2008.

Department of Botany

Buerkle, Christian A.

Associate Professor

Professor Buerkle (Ph.D., University of Indiana , 1997) was appointed to the Botany faculty in 2004. Professor Buerkle is an expert in the evolutionary genetics of plants. He is directing several Ph.D. students in the interdisciplinary Program in Ecology (PiE) as well as teaching for the integrative cross-college life sciences program. During his time at UW, he has produced 10 refereed articles and brought in nearly \$700,000 in extramural funding.

Tinker, Daniel B.

Associate Professor

Professor Tinker (Ph.D., University of Wyoming, Laramie, 1999) was appointed to the Botany Department in 2005. Much of Professor Tinker's ecological research is directly related to Wyoming. He has contributed to 17 refereed articles and book chapters and participated in collaborative research that has led to the funding of nearly \$1.2 million in grants. Professor Tinker teaches for the interdisciplinary program in Environment and Natural Resources (ENR) as well as courses in forest ecology.

Department of Criminal Justice

Heck, Cary E.

Associate Professor

Professor Heck (Ph.D., Washington State University, Pullman, 1998) was appointed to the Criminal Justice faculty in 2004. Professor Heck teaches a variety of undergraduate courses on juvenile delinquency, policing, gangs, and drugs as related to the criminal justice system. He has published 11 refereed articles or government reports since his arrival at UW and has received over \$363,000 in extramural funding. He serves on the Wyoming Governor's Board on Substance Abuse and Violent Crime.

Department of English

Russell, Christopher C.

Associate Professor

Professor Russell (Ph.D., University of Oregon, Eugene, 2001) was appointed to the English and American Indian Studies faculties in 2004. Professor Russell teaches a variety of courses on American Indian literature, film, humor, and the environment. A collaborative and interdisciplinary teacher and writer, Professor Russell's coauthored book, *An Introduction to Critical Race Theory in Education*, is published by Routledge. He also has seven refereed articles on subjects ranging from civil rights, drug courts, educational practices, treaties with American Indian nations, and the Tlingit culture, a native group of the Northwest Coast.

Watson, Wilton Brad

Associate Professor

Professor Watson (MFA, University of Alabama, Tuscaloosa, 1985) was appointed to the English Department in 2005. Professor Watson served as visiting writer in residence at several institutions as well as Director of Creative Writing at Harvard University before coming to UW. He has written 13 short stories since coming here, including one published in *The New Yorker* that is to receive the 2010 O Henry/Pen Prize. He also has recently published a book of short stories, *Aliens in the Prime of their Lives*, with W. W. Norton & Co. Professor Watson teaches fiction writing courses from the sophomore through the graduate levels.

Department of Geography

Prager, Steven D.

Associate Professor

Professor Prager (Ph.D., Simon Fraser University, Burnaby, BC, Canada, 2002) was appointed to the Geography faculty in 2004. An expert in geographic information systems (GIS) and spatial modeling, Professor Prager has published nine refereed articles and has received over \$1 million in extramural funding. The latter value includes a recent Department of Defense grant. Professor Prager teaches a variety of GIS and spatial modeling applications. He also is interested in the relationship among teaching, research, and the assessment of student learning.

Department of Mathematics

Lyng, Gregory D.

Associate Professor

Professor Lyng (Ph.D., Indiana University, Bloomington, 2002) was appointed to the Mathematics Department in 2005. Professor Lyng received a five year CAREER grant from the National Science Foundation, one of the most prestigious awards given to a junior faculty member. He has published four refereed articles since coming to UW and his grantsmanship totals nearly \$640,000 including the NSF award. Professor Lyng crosses the bridge between theoretical and applied mathematics, teaching courses in mathematical analysis, complex variables, calculus and methods of applied mathematics.

Department of Music

Sheridan-Rabideau, Mark G.

Associate Professor

Professor Sheridan-Rabideau (D.M.A., University of Illinois, Urbana, 1998) was appointed to the Music faculty in 2007. Professor Sheridan-Rabideau teaches courses including jazz improvisation, techniques, and ensemble, and tuba and trombone at various levels. In addition to thirty music clinics, adjudications, and workshops in which he has participated during the last three years, he has published two refereed articles. Professor Sheridan-Rabideau also is involved in how creativity can be taught in the modern world and was a major organizer in the UW multiyear multidisciplinary symposium, "ReVisioning the (W)hole."

Department of Psychology

Deacon, Brett J.

Associate Professor

Professor Deacon (Ph.D., Northern Illinois University, 2002) was appointed to the Psychology faculty in 2004. After a post doctoral year at the Mayo Clinic, Professor Deacon began his work in the clinical psychology area at UW. He teaches classes that range from "abnormal psychology" for undergraduates to psychotherapy for graduate students who are training in this area. During his time at UW, Professor Deacon has published 36 collaborative refereed articles on subjects such as anxiety disorders, social phobias, depression and other conditions.

Hartung, Cynthia M.

Associate Professor

Professor Hartung (Ph.D., University of Kentucky, Lexington, 1998) was appointed to the Psychology faculty in 2007. Coming to UW only three years ago after several research fellowships, Professor Hartung joined the clinical area in the Psychology Department and teaches upper division and graduate-level classes in behavioral disorders and clinical assessment. She has published nine refereed articles and book chapters during her time at UW on subjects such as ADHD and other challenges related to children.

Department of Zoology & Physiology

Sun, Qian-Quan

Associate Professor

Professor Sun (Ph.D., St. Andrews University, St. Andrews, UK, 1998) was appointed to the Zoology & Physiology Department in 2004. With nearly \$1.9 million in extramural funding and thirteen refereed articles, Professor Sun has an impressive research record in neuroscience. Several of his grants are from the National Institutes of Health (NIH). He teaches advanced undergraduate and graduate courses in physiology and neuroscience. In addition, he has taught for the cross-college life sciences program in cell biology.

Religious Studies Program

Newell, Quincy D.

Associate Professor

Professor Newell (Ph.D., University of North Carolina, Chapel Hill, 2004) was appointed to the Religious Studies Program faculty in 2004. Professor Newell has published a book, *California Indians and Hispanic Colonists on the San Francisco Peninsula 1776-1821*, with the University of New Mexico Press as well as several other articles during her time at UW. She is an expert on American religions and teaches all levels of undergraduate courses including ones on the religious experience in the American West.

College of Business

Name

New Rank

Department of Economics & Finance

Finnoff, David C.

Associate Professor

Professor Finnoff (Ph.D., University of Wyoming, 2001) was appointed to the Department of Economics and Finance faculty in August 2004. He teaches courses in microeconomic theory, dynamic optimization, general equilibrium and welfare economics, mathematical methods for economists, history of economic thought and environmental and resource economics. His research includes studies of applied microeconomic theory including: management of renewable resources, endogenous risk, coupled human and natural systems, invasive species, native pests, endemic human diseases, emerging infectious diseases, regulation, optimal control theory, real options, and computable general equilibrium. He was named a Top Prof for 2009-2010 by the Cap and Gown Chapter of Mortar Board and has received the College of Business Outstanding Junior Research Award (2007-2008 and 2005-2006) and the Tom and Judy Crocker Prize in Economics and Finance in 2007.

Van't Veld, Klaas T.

Associate Professor

Professor van 't Veld (Ph.D., University of California, Berkely, 1997) was appointed to the Department of Economics and Finance faculty in August 2004. He teaches courses in microeconomics, natural resource economics, and managerial economics. His research includes studies of environmental and natural resource economics, energy economics, and law and economics. Klaas received the Crocker Young Scholar Award in 2006 and 2009.

Department of Management & Marketing

Sprague, Robert D.

Associate Professor

Professor Sprague (J.D., University of Denver College of Law, 1985) was appointed to the Department of Management and Marketing faculty in August 2004. He teaches courses in: commercial law, business organization, and entrepreneurial/small business law. His research includes privacy law, cyberlaw and corporate governance. He received the Governor Geringer Award for Promising Young Scholars for 2007-2010 and the College of Business Outstanding Junior Research Award for 2009-2010 and 2007-2008.

College of Education

Name

New Rank

Department of Educational Studies

Jaime, Angela M.

Associate Professor

Professor Jaime joined the College of Education as an Assistant Professor in the department of Educational studies in fall 2004. Angela is an enrolled member of the Pit River and Valley Maidu tribes of northern California. Angela earned her B.A. at California State University, Sacramento in Ethnic Studies with a concentration in American Indian Studies, her M.A. at San Francisco State University in the College of Ethnic Studies with an American Indian studies focus, and her Ph.D. from Purdue University in Curriculum Studies. Angela specializes in American Indian education, the study of Native women and their experiences in higher education, multicultural education, social justice and Women's Studies.

College of Health Sciences

Name

New Rank

Division of Kinesiology and Health

Wallhead, Tristan

Associate Professor

Professor Wallhead (Ph.D., The Ohio State University, 2004) was appointed to the Division of Kinesiology and Health as an Assistant Professor in 2004. He was educated and received his other degrees from institutions of higher learning in the United Kingdom. His research interests are in the teaching of physical education to elementary and high school students and promoting healthy lifestyles in these age groups.

Division of Social Work

Kempson, Diane A.

Associate Professor

Professor Kempson (Ph.D., University of South Carolina, 1998) was appointed to the Division of Social Work as an Assistant Professor in 2004. She previously held a faculty appointment in the Department of Nursing at Idaho State University and had a distinguished career in clinical social work. Her current research is in the area of grief counseling. She teaches undergraduate and graduate courses in Social Work, participates on graduate committees and has taught in nursing courses.

TENURE-TRACK REAPPOINTMENTS

It is recommended to the Trustees of the University of Wyoming that the following tenure-track faculty be reappointed in probationary positions.

College of Agriculture and Natural Resources

<u>Name</u>	<u>Rank</u>	<u>Review Year</u>
<i>Department of Agricultural and Applied Economics</i>		
Andersen, Matthew A.	Assistant Professor	3
Ehmke, Mariah	Assistant Professor	4
Peck, Dannele E.	Assistant Professor	4
Rashford, Benjamin S.	Assistant Professor	4
Ritten, John P.	Assistant Professor	2
<i>Department of Animal Science</i>		
Alexander, Brenda M.	Assistant Professor	4
Cammack, Kristi	Assistant Professor	3
Lake, Scott L.	Assistant Professor	3
Zhu, Meijun	Assistant Professor	2
<i>Department of Family & Consumer Sciences</i>		
Larson-Meyer, Dawnine	Assistant Professor	5
Morgan, Kari M.	Assistant Professor	5
Wade, Christine E.	Assistant Professor	2
<i>Department of Molecular Biology</i>		
Wall, Daniel M.	Assistant Professor	3
Ward, Naomi	Assistant Professor	3
<i>Department of Plant Sciences</i>		
Islam, Md Anowarul	Assistant Professor	2
Kniss, Andrew R.	Assistant Professor	3
<i>Department of Renewable Resources</i>		
Beck, Jeffrey L.	Assistant Professor	3

Kelleners, Thijs	Assistant Professor	4
Norton, Jay B.	Assistant Professor	4
<i>Department of Veterinary Sciences</i>		
Fox, Jonathan H.	Associate Professor	4
Yao, Chaoqun	Assistant Professor	2

College of Arts & Sciences

<u>Name</u>	<u>Rank</u>	<u>Review Year</u>
<i>Department of Anthropology</i>		
Murphy, Melissa S.	Assistant Professor	2
<i>Department of Art</i>		
Russell, Douglas J.	Assistant Professor	5
Venn, Jennifer E.	Assistant Professor	3
<i>Department of Botany</i>		
Minckley, Thomas A.	Assistant Professor	2
Ogle, Kiona	Assistant Professor	4
<i>Department of Chemistry</i>		
Balaz, Milan	Assistant Professor	2
Dutta, Debashis	Assistant Professor	4
Lehmann, Teresa Erika	Assistant Professor	2
Mehn, Mark P.	Assistant Professor	4
Zhou, Jing	Assistant Professor	3
<i>Department of Communication & Journalism</i>		
Gilchrist, Eileen	Assistant Professor	3
<i>Department of Criminal Justice</i>		
Culhane, Scott E.	Assistant Professor	5
Wodahl, Eric J.	Assistant Professor	3
<i>Department of English</i>		
Quackenbush, Nicole	Assistant Professor	2
Thompson, Jason C.	Assistant Professor	2
<i>Department of Geography</i>		
Shinker, Jacqueline J.	Assistant Professor	5
<i>Department of Geology & Geophysics</i>		
Chen, Po	Assistant Professor	2
Kaszuba, John P.	Associate Professor	4
Riebe, Clifford S.	Assistant Professor	2
Zhang, Ye	Assistant Professor	3

Department of History

Means, Jeffrey D.	Assistant Professor	3
Messenger, David A.	Assistant Professor	5

Department of Mathematics

Chamberlin, Michelle T.	Assistant Professor	4
Ginting, Victor E.	Assistant Professor	3
Lee, Long	Assistant Professor	5

Department of Modern & Classical Languages

Hind, Emily A.	Assistant Professor	5
Picherit, Herve G.	Assistant Professor	2

Department of Music

Guzzo, Anne M.	Assistant Professor	5
Lamartine, Nicole C.	Assistant Professor	3
Souza Santos, Rubia C.	Assistant Professor	3
Vanderborgh, Beth D.	Assistant Professor	2

Department of Physics & Astronomy

Wang, Wenyong	Assistant Professor	2
----------------------	---------------------	---

Department of Political Science

Barghothi, Akram J.	Assistant Professor	2
Gabrielson, Teena	Assistant Professor	4
Garner, Andrew D.	Assistant Professor	2

Department of Psychology

McKibbin, Christine L.	Assistant Professor	3
Penningroth, Suzanna L.	Assistant Professor	3
Wilkowski, Benjamin M.	Assistant Professor	2

Department of Statistics

Barber, Jarrett J.	Assistant Professor	4
---------------------------	---------------------	---

Department of Theatre & Dance

Aragon, Cecilia J.	Assistant Professor	5
Deckert, Jennifer L.	Assistant Professor	3
Jackson, Lawrence M.	Assistant Professor	2
Kearns, Casey J.	Assistant Professor	5
Mendelson, Adam	Assistant Professor	2
O'Hagan, John J.	Assistant Professor	2

College of Business

<u>Name</u>	<u>Rank</u>	<u>Review Year</u>
<i>Department of Accounting</i>		
Stephenson, Teresa M.	Assistant Professor	5
<i>Department of Economics & Finance</i>		
Janus, Thorsten M.	Assistant Professor	4
Skiba, Alexandre	Assistant Professor	2
Skiba, Hilla Maaria	Assistant Professor	2
Sokolyk, Tatyana	Assistant Professor	2
Strong, Aaron	Assistant Professor	2
<i>Department of Management & Marketing</i>		
Kebelis, Matthew F.	Assistant Professor	4
Oneto, Stephanie A.	Assistant Professor	3
Press, Melea D.	Assistant Professor	2

College of Education

<u>Name</u>	<u>Rank</u>	<u>Review Year</u>
<i>Department of Educational Studies</i>		
Janak III, Edward A.	Assistant Professor	4
Roxas, Kevin C.	Assistant Professor	2
<i>Department of Professional Studies</i>		
Bolliger, Doris C.	Assistant Professor	4
Duncan, Heather E.	Assistant Professor	5
Shepherd, Craig	Assistant Professor	2
Stock, Mark	Assistant Professor	3
Warren, Jane A.	Assistant Professor	3
<i>Department of Secondary Education</i>		
Medina-Jerez, William J.	Assistant Professor	4
<i>Department of Elementary & Early Childhood Education</i>		
Johnson, Tricia G.	Assistant Professor	4
Nganga, Lydiah W.	Assistant Professor	5

College of Engineering and Applied Science

<u>Name</u>	<u>Rank</u>	<u>Review Year</u>
<i>Department of Chemical & Petroleum Engineering</i>		
Adidharma, Hertanto	Assistant Professor	5
Alvarado, Vladimir	Assistant Professor	4
Fan, Maohong	Associate Professor	4
Goual, Lamia	Assistant Professor	3
Johnson, Patrick A.	Assistant Professor	4
Yin, Shunde	Assistant Professor	2
<i>Department of Civil & Architectural Engineering</i>		
Brant, Jonathan A.	Assistant Professor	2
Megri, Ahmed C.	Associate Professor	4
Park, Gi-Hyeon	Assistant Professor	2
<i>Department of Computer Science</i>		
Wang, Liqiang	Assistant Professor	4
<i>Department of Electrical and Computer Engineering</i>		
Stefanovic, Margareta	Assistant Professor	5
<i>Department of Mechanical Engineering</i>		
Frick, Carl P.	Assistant Professor	2
Jun, Sukky	Assistant Professor	4

College of Health Sciences

<u>Name</u>	<u>Rank</u>	<u>Review Year</u>
<i>Division of Communication Disorders</i>		
Allen, Melissa M.	Assistant Professor	3
Steeve, Roger W.	Assistant Professor	5
<i>Division of Kinesiology and Health</i>		
Bundle, Matthew W.	Assistant Professor	4
Zhu, Qin	Assistant Professor	2
<i>Division of Social Work</i>		
Larsen, Kelli M.	Assistant Professor	2
McKinney, Kathleen	Assistant Professor	2
<i>School of Nursing</i>		
Purtzer, Mary Ann	Assistant Professor	2
<i>School of Pharmacy</i>		
Clark, Suzanne	Assistant Professor	3

College of Law

<u>Name</u>	<u>Rank</u>	<u>Review Year</u>
Duff, Michael C.	Associate Professor	4

EXTENDED-TERM APPOINTMENTS WITH PROMOTION

1. Faculty

It is recommended to the Trustees of the University of Wyoming that five-year extended-term appointments with promotion in rank for the following faculty be approved as indicated.

College of Law

<u>Name</u>	<u>New Rank</u>	<u>Extended Term Number</u>
<i>Law Library</i>		
Plumb, Tawnya K.	Associate Librarian	1

University Libraries

<u>Name</u>	<u>New Rank</u>	<u>Extended Term Number</u>
McCarthy, Deborah A.	Associate Librarian	1

2. Academic Professionals

It is recommended to the Trustees of the University of Wyoming that six-year extended-term appointments with promotion in rank for the following academic professionals be approved as indicated.

College of Agriculture and Natural Resources

<u>Name</u>	<u>New Rank</u>	<u>Extended Term Number</u>
<i>Department of Agricultural and Applied Economics</i>		
Foulke, Thomas K.	Senior Research Scientist	2
<i>Department of Renewable Resources</i>		
Sharma, Shikha	Associate Research Scientist	1

College of Arts & Sciences

<u>Name</u>	<u>New Rank</u>	<u>Extended Term Number</u>
<i>Department of Communication & Journalism</i>		
Bingham, Beau B.	Associate Lecturer	1
Roberts, Rebecca L.	Senior Lecturer	2

Department of English

Heaney, April M.	Associate Lecturer	1
Van Baalen-Wood, Margaret	Associate Lecturer	1

Department of Zoology & Physiology

Krist, Amy C.	Associate Research Scientist	1
Skinner, Margaret J.	Associate Lecturer	1

Science & Math Teaching Center

Parker, Sylvia D.	Senior Lecturer	2
--------------------------	-----------------	---

College of Education

<u>Name</u>	<u>New Rank</u>	<u>Extended Term Number</u>
<i>Department of Elementary & Early Childhood Education</i>		
Wiig, Diana L.	Associate Lecturer	1

EXTENDED-TERM APPOINTMENTS

1. Faculty

It is recommended to the Trustees of the University of Wyoming that five-year extended-term appointments with no promotion in rank for the following faculty be approved as indicated.

Academic Affairs

<u>Name</u>	<u>Rank</u>	<u>Extended Term Number</u>
<i>American Heritage Center</i>		
Ewig, Richard G.	Associate Archivist	4
Kilander, Ginny L.	Associate Archivist	2

College of Law

<u>Name</u>	<u>Rank</u>	<u>Extended Term Number</u>
<i>Law Library</i>		
Person, Debora A.	Associate Librarian	2

University Libraries

<u>Name</u>	<u>Rank</u>	<u>Extended Term Number</u>
<i>Cataloging Department</i>		
Hanscom, Martha J.	Associate Librarian	6
<i>Coe Reference Department</i>		
Mayer, Jennifer	Associate Librarian	2
<i>Collection Development</i>		
Leath, Janis L.	Associate Librarian	4

2. Academic Professionals

It is recommended to the Trustees of the University of Wyoming that six-year extended-term appointments with no promotion in rank for the following academic professionals be approved as indicated.

College of Agriculture and Natural Resources

<u>Name</u>	<u>Rank</u>	<u>Extended Term Number</u>
<i>Cooperative Extension Service</i>		
Jensen, Tamra R.	Senior Extension Educator	4
Lewis, Phyllis B.	Senior Extension Educator	3
Martin, Mary M.	Senior Extension Educator	3
Mount, Dallas E.	Senior Extension Educator	2
Pasley, Christine A.	Senior Extension Educator	4
<i>Department of Agricultural and Applied Economics</i>		
Hewlett, John P.	Senior Extension Educator	3
<i>Department of Animal Science</i>		
Austin, Kathleen J.	Senior Research Scientist	4
Van Kirk, Edward A.	Senior Research Scientist	4

College of Arts & Sciences

<u>Name</u>	<u>Rank</u>	<u>Extended Term Number</u>
<i>Department of English</i>		
Richardson, Bruce A.	Senior Lecturer	4
<i>Department of Mathematics</i>		
Weber, William S. Jr.	Associate Lecturer	2

College of Health Sciences

<u>Name</u>	<u>Rank</u>	<u>Extended Term Number</u>
<i>Division of Communication Disorders</i>		
Garcia, Teresa J.	Associate Lecturer	2

EXTENDED-TERM-TRACK REAPPOINTMENTS

1. Faculty

It is recommended to the Trustees of the University of Wyoming that probationary, one-year reappointments for the following extended-term-track faculty be approved as indicated.

Academic Affairs

<u>Name</u>	<u>Rank</u>	<u>Review Year</u>
<i>American Heritage Center</i>		
Francis, Matthew R.	Assistant Archivist	2
Uglean Jackson, Laura	Assistant Archivist	2

University Libraries

<u>Name</u>	<u>Rank</u>	<u>Review Year</u>
Hutchens, Chad E.	Assistant Librarian	2
Morse McGill, Tierney	Assistant Librarian	4
<i>Coe Reference Department</i>		
Calkins, Kaijsa J.	Assistant Librarian	4
Kvenild, Cassandra M.	Assistant Librarian	2

2. Academic Professionals

It is recommended to the Trustees of the University of Wyoming that probationary, one-year reappointments for the following extended-term-track academic professionals be approved as indicated.

Academic Affairs

<u>Name</u>	<u>Rank</u>	<u>Review Year</u>
<i>Art Museum</i>		
Bredehoft, Wendy E.	Associate Research Scientist	4
<i>School of Environment & Natural Resources</i>		
Lovato, Jill	Assistant Research Scientist	5

College of Agriculture and Natural Resources

<u>Name</u>	<u>Rank</u>	<u>Review Year</u>
<i>Cooperative Extension Service</i>		
Chapman, Kimberly	Assistant Extension Educator	2
Chichester, Kellie	Assistant Extension Educator	4
Daniels, Juliet M.	Assistant Extension Educator	3
<i>Cooperative Extension Service</i>		
Ehmke, Cole C.	Assistant Extension Educator	5
Frost, Sandra M.	Assistant Extension Educator	3
Mealor, Rachel D.	Assistant Extension Educator	2
Reaman, Kimberly K.	Associate Extension Educator	4
Schamber, Robin A.	Assistant Extension Educator	2
Smith, Dallen R.	Assistant Extension Educator	3
Strom, Calvin F.	Assistant Extension Educator	4
Willis, Kentz	Assistant Extension Educator	2
<i>Department of Animal Science</i>		
Uthlaut, Adam B.	Assistant Research Scientist	2
<i>Department of Molecular Biology</i>		
Watson, Rachel M.	Assistant Lecturer	4

College of Arts & Sciences

<u>Name</u>	<u>Rank</u>	<u>Review Year</u>
<i>Department of Art</i>		
Kikut, Patrick A.	Assistant Lecturer	2
<i>Department of Botany</i>		
McClean, Terry M.	Assistant Research Scientist	4
Sivanpillai, Ramesh	Associate Research Scientist	3
<i>Department of Chemistry</i>		
Beckett, Carla D.	Assistant Lecturer	4
<i>Department of Communication & Journalism</i>		
Stewart, Justin D.	Assistant Lecturer	4
<i>Department of English</i>		
Bergstraesser, Paul	Assistant Lecturer	3
<i>Department of Mathematics</i>		
Anton, David W.	Assistant Lecturer	4

Department of Modern & Classical Languages

Person, Mark W. Assistant Lecturer 4

Department of Music

Turpen, Jennifer L. Assistant Lecturer 4

Department of Physics & Astronomy

Michalak, Rudiger T. Assistant Lecturer 5

Department of Theatre & Dance

Newell, Patrick H. Assistant Lecturer 5

Department of Zoology & Physiology

Chalfoun, Anna Lisa D. Assistant Research Scientist 2

Religious Studies Program

Ward, Seth Assistant Lecturer 5

WyGISC

Oakleaf, James R. Assistant Research Scientist 5

College of Education

<u>Name</u>	<u>Rank</u>	<u>Review Year</u>
-------------	-------------	--------------------

Department of Professional Studies

Aagard, Steven D.	Associate Lecturer	5
--------------------------	--------------------	---

Department of Elementary & Early Childhood Education

Miller, Kimberly Dawn	Assistant Lecturer	3
------------------------------	--------------------	---

Spiker, Amy B.	Assistant Lecturer	3
-----------------------	--------------------	---

College of Engineering and Applied Science

<u>Name</u>	<u>Rank</u>	<u>Review Year</u>
-------------	-------------	--------------------

Dean's Office

Johnson, Lindy M.	Assistant Lecturer	2
--------------------------	--------------------	---

Kobbe, Ryan G.	Assistant Lecturer	2
-----------------------	--------------------	---

Department of Civil & Architectural Engineering

Gray, Stephen T.	Associate Research Scientist	4
-------------------------	------------------------------	---

Department of Computer Science

Buckner, Kim	Assistant Lecturer	2
---------------------	--------------------	---

Department of Electrical and Computer Engineering

Anderson, Jeffrey R.	Assistant Lecturer	4
-----------------------------	--------------------	---

College of Health Sciences

<u>Name</u>	<u>Rank</u>	<u>Review Year</u>
<i>Division of Communication Disorders</i>		
Ross, Catherine L.	Assistant Lecturer	2
<i>Division of Kinesiology and Health</i>		
Smith, Marci L.	Associate Lecturer	4
<i>School of Nursing</i>		
Murphy-Parker, Dana	Assistant Lecturer	3
<i>School of Pharmacy</i>		
Hunter, Melissa L.	Assistant Research Scientist	3

GLOSSARY OF PERSONNEL TERMS

Academic Professional

Person other than faculty, engaged primarily in activities that extend and support the teaching, research, extension, and service missions of the University. There are four categories of academic professional: Extension Educators, Lecturers, Research Scientists, Post-Doctoral Associates. Individuals belonging to any of the first three categories can hold extended-term-track appointments under certain conditions.

Academic-Year (AY) Appointments

Appointments in which the regular period of employment includes the fall and spring semesters (nine months) of each year, with no accrual of vacation leave. Most faculty members and academic professionals hold AY appointments. AY employees typically receive their nine-month salaries and benefits spread out over the 12 months of each calendar year.

Adjunct Faculty

An adjunct appointment is the appointment of an individual to an academic unit that recognizes special discipline-related expertise but carries no financial obligation per se. Adjunct appointments can include qualified non-academic personnel or faculty with other academic affiliations. Adjunct appointments carry no rights to remuneration, tenure, or employment-related privileges and are normally for three years, with renewal possible.

Archives Faculty

This special faculty designation is reserved for archivists of the American Heritage Center. Archivists are responsible for acquiring original resource material to support academic research and teaching, organizing the material physically and intellectually, and teaching faculty, students and others to use these materials. There are three archivist ranks: Assistant Archivist, Associate Archivist, Archivist.

Assistant Professor

Indicates tenure-track appointments of individuals who hold the terminal degree in their discipline. This is the usual entry-level faculty rank.

Associate Professor

In addition to the qualifications of an Assistant Professor, Associate Professors have established a strong reputation in scholarship and teaching. Generally, faculty hired as Assistant Professors are promoted to the rank of Associate Professor at the time tenure is granted.

Clinical Faculty

Clinical faculty appointments allow experts in health-related fields to contribute to the training of UW students in allied disciplines. Clinical appointments are for at most one year at a time and carry no rights to tenure or extended terms. Clinical faculty members may be salaried members of the UW faculty, in which case their reappointment is subject to annual performance reviews. There are also adjunct clinical faculty appointments, which typically involve health-care professionals whose normal employment is outside the university. Adjunct clinical appointments carry no financial commitment from the University.

Emeritus Faculty

Tenured faculty who retire after long and distinguished service are eligible for emeritus status upon their retirement. The designation is honorary and carries no necessary commitment of space or remunerative employment. By analogy, extended-term academic professionals may be eligible for emeritus status upon retirement. (Emeritus=masculine, emerita=feminine, emeriti=plural.)

Extended-Term Appointment

Academic professionals who have successfully completed probationary terms (usually six years) may receive six-year appointments called extended-term appointments. The term also applies to certain librarians and archivists who hold faculty status. These employees are eligible for extended-term appointments after five-year probationary periods. Extended terms for these employees are five years in length. Academic professionals, librarians, and archivists who are in the probationary period are on the extended-term-track.

Extension Educator

These academic professionals provide non-credit education to off-campus clientele through UW's Cooperative Extension Service. There are three ranks of Extension Educators: Assistant Extension Educator, Associate Extension Educator, Senior Extension Educator. All Extension Educators are in the College of Agriculture.

Faculty

Members of the permanent faculty include tenured or tenure-track Assistant Professors, Associate Professors, and Professors. Also included are tenure-track individuals who hold the rank of Instructor while completing their terminal degrees. Librarians and archivists also hold faculty status. They are eligible for extended terms instead of tenure.

Fiscal-Year (FY) Appointments.

Appointments in which the regular period of employment is the entire calendar year, with accrual of annual vacation leave. Faculty members who hold administrative positions with summer responsibilities often have FY appointments for the duration of their administrative terms.

Full-Time Equivalent (FTE)

A measure of the time commitment expected of an employee or a set of employees. For example, two full-time employees or four half-time employees constitute 2.0 FTE.

Instructor

Tenure-track faculty member who does not yet hold the terminal degree in the appropriate field. UW requires verification of degrees in the form of official transcripts. UW does not grant tenure to faculty members who hold Instructor status at the time of the decision.

Leave of Absence Without Pay

Academic and administrative personnel may request leaves without pay for periods normally not in excess of one year, for purposes consistent with the professional enhancement of the employee and the advancement of the University's stature.

Lecturer

A category of academic professional involved largely in classroom instruction. Lecturers may be appointed to three ranks: Assistant Lecturer, Associate Lecturer, Senior Lecturer.

Library Faculty

This faculty designation applies to employees of the University Libraries. There are three ranks of library faculty: Assistant Librarian, Associate Librarian, Librarian.

Part-Time Employee

Any employee holding less than a full-time equivalent position (FTE less than 1.0).

Post-Doctoral Associate

Post-Docs are doctorally qualified academic professionals seeking greater professional development and research investigation, before obtaining permanent employment. Post-Doctoral appointments are temporary.

Probationary Faculty

This term refers to tenure-track faculty members who are working toward tenure and to academic professionals, library faculty, and archive faculty who are working toward extended-term contracts. The probationary term for academic professionals is generally six years, with yearly reviews and re-appointments. For librarians and archivists, it is five years. Faculty members who are on tenure-track appointments typically undergo the review for tenure in the sixth year of employment.

Professional Development Leave

Extended-term academic professionals who have completed six years of service at the University are eligible for professional development leave. The purpose of development leave is to enhance performance, to conduct special studies, or in some other way to enhance an individual's ability to contribute to the University. Development leaves can be granted with or without pay, are the prerogative of the academic unit in which the academic professional is located, and are generally similar to sabbatical leaves for faculty.

Professor

In addition to the qualification of an Associate Professor, "full" Professors have attained wide recognition in their professional fields for scholarship or other creative activity and have gained recognition for superior teaching and service.

Research Professor

Person with demonstrated superior capacity for research contributions, who is employed solely on external funds, and who holds a terminal degree. These appointments are made only at the Professor level and for not more than one year at a time. They are renewable.

Research Scientist

An academic professional whose primary responsibility is to conduct research. There are three ranks for Research Scientists: Assistant Research Scientist, Associate Research Scientist, Research Scientist.

Review Year

Year in which a reappointment review occurs for probationary employees. Normally, tenure-track faculty members undergo mandatory reappointment reviews in their first, second, and fourth years, with optional reviews in the third and fifth years. A review for the tenure decision occurs no later than the sixth year. An explanatory flow chart appears at the end of this glossary. In some cases employees start with credit toward a tenure or extended-term decision, based on their previous experience. In these cases the review year is the number of years of service at UW plus the number of years of credit.

Sabbatical Leave

Sabbatical leave may be granted to any tenured member of the faculty for the purposes of increasing professional competence and usefulness to the University. A minimum of six years service at the University must precede each period of sabbatical leave, although no right accrues automatically through lapse of time. Sabbatical leaves are normally granted for either a half year (full pay) or a full year (60% of salary). A faculty member who fails to return to the University after a sabbatical leave must repay the amount of compensation received from the University during the sabbatical. Faculty members may not use sabbatical leaves to pursue degrees.

Temporary Appointment

A short-term appointment without rights to tenure or extended term. Most temporary appointments are for one semester or one academic year.

Tenure-Track Appointment

Indicates a probationary faculty appointment prior to the award of tenure. Tenure-track positions generally require six years to tenure, but fewer years may be required based upon level of previous experience and accomplishments.

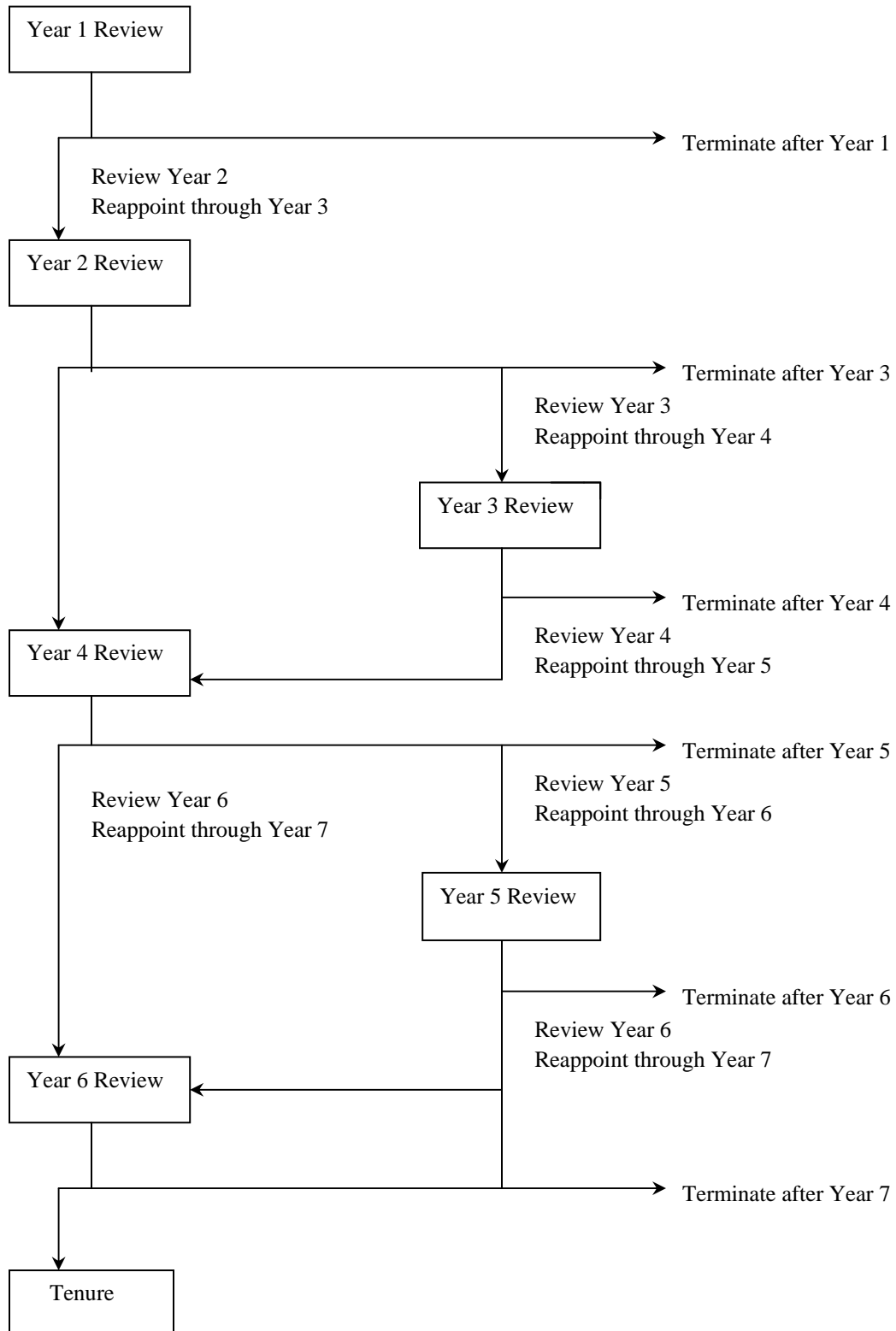
Terminal Degree

Typically the highest earned degree in a field of study. Examples include the Ph.D. (a variety of fields), the M.D. (medicine), the Ed.D. (education), M.F.A. (fine arts), M.Arch. (architecture), and J.D. (law).

Visiting Appointment

Indicates a non-permanent, non-tenure-track faculty appointment. Most visiting appointments are for one year.

FLOW CHART FOR FACULTY REAPPOINTMENTS



B. Items for Information

The changes in appointments and reappointments listed below are for the information of members of the Board of Trustees.

REAPPOINTMENTS

1. Faculty

College of Health Sciences

<u>Name</u>	<u>Rank</u>	<u>Appointment Period</u>
<i>Family Medicine Residency Program - Casper</i>		
Radosevich, Thomas E.	Clinical Assistant Professor	07/01/2010 to 06/30/2011
Robitaille, Beth C.	Clinical Associate Professor	07/01/2010 to 06/30/2011
Trent, Stephan N.	Clinical Associate Professor	07/01/2010 to 06/30/2011
Veauthier, Brian M.	Clinical Assistant Professor	07/01/2010 to 06/30/2011
<i>Family Medicine Residency Program - Cheyenne</i>		
Brandes, Lisa K.	Clinical Assistant Professor	07/01/2010 to 06/30/2011
Broomfield, James F.	Clinical Associate Professor	07/01/2010 to 06/30/2011
Healey, John P.	Clinical Assistant Professor	07/01/2010 to 06/30/2011
Malm, Ronald L.	Clinical Associate Professor	07/01/2010 to 06/30/2011
Monger, Robert	Clinical Assistant Professor	07/01/2010 to 06/30/2011
Schmitz, G. Douglas	Clinical Assistant Professor	07/01/2010 to 06/30/2011
<i>School of Nursing</i>		
Steiner, Susan H.	Clinical Associate Professor	07/01/2010 to 06/30/2011
<i>School of Pharmacy</i>		
Buckley, Whitney A.	Clinical Assistant Professor	07/01/2010 to 06/30/2011
Hazlewood, Kathleen A.	Clinical Assistant Professor	07/01/2010 to 06/30/2011
Hornecker, Jaime Rose	Clinical Assistant Professor	07/01/2010 to 06/30/2011
Krueger, Janelle L.	Clinical Assistant Professor	07/01/2010 to 06/30/2011
Onysko, Mary K.	Clinical Assistant Professor	07/01/2010 to 06/30/2011
Stump, Amy L.	Clinical Assistant Professor	07/01/2010 to 06/30/2011
Weiland, Christy M.	Clinical Assistant Professor	07/01/2010 to 06/30/2011
Woods, Tonja M.	Clinical Associate Professor	07/01/2010 to 06/30/2011
<i>WWAMI Medical Education Program</i>		
Dreiling, Frederick J.	Clinical Assistant Professor	07/01/2010 to 06/30/2011
Swiatek, Donald	Clinical Professor	07/01/2010 to 06/30/2011

3. Committee of the Whole- CONSENT AGENDA

Bond Issue Approval, Vinzant

CHECK THE APPROPRIATE BOX(ES):

- Work Session
- Education Session
- Information Item
- Other Specify: Committee of the Whole (Consent Agenda)

4. Committee of the Whole- CONSENT AGENDA

Approval of Construction Contracts, Vinzant

- a. GMP for Visual Arts**
- b. SAREC Design Build Contract**
- c. GMP for Tennis Facility**

CHECK THE APPROPRIATE BOX(ES):

- Work Session
- Education Session
- Information Item
- Other Specify: Committee of the Whole (Consent Agenda)

5. Committee of the Whole- CONSENT AGENDA

Master List of Degrees, Allen

CHECK THE APPROPRIATE BOX(ES):

- Work Session
 Education Session
 Information Item
 Other Specify: Committee of the Whole (Consent Agenda)

BACKGROUND AND POLICY CONTEXT OF ISSUE:

In March 1983, the Board adopted the process of annually approving a composite list of all degrees and majors offered by the University of Wyoming. Because of the diversity of academic programs at UW, it was deemed prudent and helpful to have a single list, maintained by the Registrar. While the Board may make changes at any time, the list is annually updated in May and presented to the Board for confirmation.

The 2010 List contains six changes approved by the Board after confirmation of the 2009 List. Additionally, one new change is requested. At the request of the Colleges of Agriculture & Natural Resources, Arts & Sciences, Engineering & Applied Science, and Law, the Board is asked to approve the addition of a program in Hydrologic Science under the inter-college, interdisciplinary Doctor of Philosophy degree.

PRIOR RELATED ACTIONS OF THE BOARD

- The Board, on November 20, 2009, at the request of the College of Agriculture, approved changing the name of the college to College of Agriculture and Natural Resources.
- On November 20, 2009, at the request of the College of Business, the Board created a program offering in Management and Marketing under the Doctor of Philosophy degree.
- On January 22, 2010, at the request of the College of Arts and Sciences, the Board established a major in American Indian Studies under the Bachelor of Arts degree.
- On January 22, 2010, at the request of the College of Arts and Sciences, the Board established a major in Religious Studies under the Bachelor of Arts degree.
- On January 22, 2010, at the request of the College of Health Sciences, the Board discontinued the major in Health Sciences under the Bachelor of Science degree.
- On March 5, 2010, at the request Colleges of Health Sciences, Agriculture & Natural Resources, and Engineering & Applied Science, the Board approved creation of an interdisciplinary program offering in Biomedical Science under the Doctor of Philosophy degree.

ACTION REQUIRED AT THIS BOARD MEETING:

The Board is asked to approve the updated Master List of Degrees and Majors – 2010.

PRESIDENT'S RECOMMENDATION:

The President recommends approval.

UNIVERSITY OF WYOMING
MASTER LIST OF DEGREES AND MAJORS

as authorized by the Trustees

MAY 2010

Prepared by the Office of the Registrar

By way of explanation, the degree title is listed in *bold italics* (for example, *Bachelor of Arts, Bachelor of Science in Chemical Engineering*). The list of majors for a specific degree in a specific college is listed below the degree title. Information in *italics* and parentheses () following a major is explanatory data, and not part of the official major name. Majors with brackets { } require the insertion of a secondary program of study.

COLLEGE OF AGRICULTURE & NATURAL RESOURCES

Bachelor of Applied Science #

Organizational Leadership

Bachelor of Science #

Agricultural Business

Agricultural Communications

Agroecology

Animal and Veterinary Science

Molecular Biology

Rangeland Ecology and Watershed Management

Bachelor of Science in Family and Consumer Sciences

Master of Science #

Agricultural Economics

Agronomy

Animal and Veterinary Science

Entomology

Family and Consumer Sciences

Food Science and Human Nutrition (*interdisciplinary*)

Molecular Biology

Rangeland Ecology and Watershed Management

Soil Science

Doctor of Philosophy #

Agronomy

Animal and Veterinary Science

Entomology

Molecular Biology

Rangeland Ecology and Watershed Management

Soil Science

= This listing not counted as a separate major

COLLEGE OF ARTS & SCIENCES

Bachelor of Arts #

American Indian Studies
American Studies
Anthropology
Art
Biology
Botany
Chemistry
Communication
Criminal Justice
English
French
Geography
Geology and Earth Sciences
German
History
Humanities/Fine Arts
International Studies
Journalism
Mathematics
Mathematics/Science
Music
Philosophy
Physics
Political Science
Psychology
Religious Studies
Russian
Self-Designed Major
Social Science
Sociology
Spanish
Statistics
Theatre and Dance
Women's Studies

Bachelor of Fine Arts #

Art *
Theatre and Dance *

Bachelor of Music #

Music Education
Music Performance

* = This major counted under previously listed degree in this college (College of Arts and Sciences)

= This listing not counted as a separate major

COLLEGE OF ARTS & SCIENCES (cont.)

Bachelor of Science #

Astronomy/Astrophysics
Biology *
Botany *
Chemistry *
Chemistry (ACS approved) #
Communication *
Environmental Geology/Geohydrology
Geography *
Geology
Journalism *
Mathematics *
Mathematics/Science *
Physics
Physics Plus {affiliated concentration} #
Physiology
Political Science *
Self-Designed Major *
Social Science *
Sociology *
Statistics *
Theatre and Dance *
Wildlife and Fisheries Biology and Management (*professional*)
Zoology

Master of Arts #

American Studies (*interdisciplinary*)
Anthropology
Communication
English
French
Geography
German
History
International Studies (*interdisciplinary*)
Mathematics
Philosophy
Political Science
Psychology
Sociology
Spanish

* = This major counted under previously listed degree in this college (College of Arts and Sciences)

= This listing not counted as a separate major

COLLEGE OF ARTS & SCIENCES (cont.)

Master of Arts in Teaching #

History *

Mathematics *

Master of Fine Arts in Creative Writing

Master of Music

Master of Music Education

Master of Planning (Community and Regional)

Master of Public Administration

Master of Science #

Botany

Chemistry

Geology

Geophysics

Mathematics *

Natural Science (*interdisciplinary*)

Physics

Psychology *

Statistics

Zoology and Physiology

Master of Science in Teaching #

Chemistry *

Geography *

Mathematics *

Natural Science (*interdisciplinary*) *

Physics *

Doctor of Philosophy #

Anthropology

Botany

Chemistry

Geology

Geophysics

Mathematics

Physics

Psychology

Statistics

Zoology and Physiology

* = This major counted under previously listed degree in this college (College of Arts and Sciences)

= This listing not counted as a separate major

COLLEGE OF BUSINESS

Bachelor of Science #

Accounting
Business Administration
Business Economics
Economics#
Finance
Management
Marketing

Master of Business Administration

Master of Science #

Accounting
Economics
Economics and Finance
Finance

Doctor of Philosophy #

Economics
Management and Marketing

= This listing not counted as a separate major

COLLEGE OF EDUCATION

Bachelor of Arts #

Elementary Education
Elementary and Special Education
Secondary Education
Special Education

Bachelor of Science #

Technical Education (*only available through UW/CC Center*)
Trades and Industrial Education
Agricultural Education

Master of Arts #

Education

Master of Science #

Counseling
Education *
Natural Science (*interdisciplinary*) *

Education Specialist

Doctor of Education

Doctor of Philosophy #

Counselor Education and Supervision
Education #

* = This major counted under previously listed degree in this college (College of Education)

= This listing not counted as separate major

COLLEGE OF ENGINEERING AND APPLIED SCIENCE

Bachelor of Science in Architectural Engineering

Bachelor of Science in Chemical Engineering

Bachelor of Science in Chemical Engineering (petroleum engineering option) #

Bachelor of Science in Civil Engineering

Bachelor of Science in Computer Engineering

Bachelor of Science in Computer Science

Bachelor of Science in Computer Science (business option) #

Bachelor of Science in Electrical Engineering

Bachelor of Science in Electrical Engineering (Francis M. Long bioengineering option) #

Bachelor of Science in Electrical Engineering (computer engineering option) #

Bachelor of Science in Energy Systems Engineering

Bachelor of Science in Mechanical Engineering

Bachelor of Science in Petroleum Engineering

Master of Science #

Atmospheric Science

Chemical Engineering

Civil Engineering

Computer Science

Computer Science Professional #

Electrical Engineering

Environmental Engineering

Mechanical Engineering

Petroleum Engineering

Doctor of Philosophy #

Atmospheric Science

Chemical Engineering

Civil Engineering

Computer Science

Electrical Engineering

Mechanical Engineering

Petroleum Engineering

= This listing not counted as a separate major

COLLEGE OF HEALTH SCIENCES

Bachelor of Science #

Kinesiology and Health Promotion
Physical Education Teaching
Speech, Language and Hearing Sciences

Bachelor of Science in Dental Hygiene

Bachelor of Science in Nursing

Bachelor of Social Work

Master of Science #

Nursing
Kinesiology and Health
Speech-Language Pathology

Master of Social Work

Doctor of Pharmacy

= This listing not counted as a separate major

COLLEGE OF LAW

Juris Doctor

SCHOOL OF ENVIRONMENT & NATURAL RESOURCES

Bachelor of Science #

Environment and Natural Resources/{affiliated major}

CROSS-COLLEGE INTERDISCIPLINARY UNDERGRADUATE DEGREES

Bachelor of Science #

Earth Systems Science with a concentration in {affiliated major}
Energy Resource Science
Microbiology

= This listing not counted as a separate major

CROSS-COLLEGE INTERDISCIPLINARY GRADUATE DEGREES

Juris Doctor/Master of Arts in Environment and Natural Resources #

Juris Doctor/Master of Public Administration #

= This listing not counted as a separate major

ACADEMIC AFFAIRS

Master of Arts #

Education/Curriculum and Instruction/Early Childhood Development #
Geography/Water Resources #
Interdisciplinary Studies
Psychology/Early Childhood Development #

Master of Science #

Agricultural Economics/Water Resources #
Botany/Water Resources #
Civil Engineering/Water Resources #
Economics/Water Resources #
Family and Consumer Sciences/Early Childhood Development #
Geology/Water Resources #
Interdisciplinary Studies *
Kinesiology and Health/Early Childhood Development #
Neuroscience
Nursing/Early Childhood Development #
Psychology/Early Childhood Development #
Rangeland Ecology and Watershed Management/Water Resources #
Reproductive Biology
Soil Science/Water Resources #
Speech-Language Pathology/Early Childhood Development #
Zoology and Physiology/Water Resources #

Master of {affiliated degree}/Environment and Natural Resources #

Doctor of Philosophy #

Biomedical Sciences
Ecology
Hydrologic Science
Molecular and Cellular Life Sciences
Neuroscience
Reproductive Biology

* = This major counted under previously-listed degree in this unit (Academic Affairs)

= This listing not counted as a separate major

6. Committee of the Whole- CONSENT AGENDA

Proposed Resolution Recognizing Strategic International Universities, Allen

CHECK THE APPROPRIATE BOX(ES):

- Work Session
 Education Session
 Information Item
 Other Specify: Committee of the Whole (Consent Agenda)

BACKGROUND AND POLICY CONTEXT OF ISSUE:

Consistent with University Plan 3, Action Item 29, the International Programs Office and International Education Steering Committee propose to establish a dynamic group of international partner universities that are recognized as Strategic International Universities. UW works with over 70 universities worldwide in various partnerships including student exchange and research collaborations. The designation of Strategic International University will be given to a subset of this group. It will designate that UW and the partner university have, across multiple colleges or units, active exchanges of undergraduate and graduate students, articulated coursework or degree programs, dual degrees, scholarly collaboration, and/or internships and service learning opportunities. Strategic International University partners will also be chosen because their scholarly strengths either complement UW Areas of Distinction, or offer UW students, faculty and staff areas of cooperation where strong demand exists, but current capacity is limited. This is a first step in implementing Action Item 29.

PRIOR RELATED BOARD DISCUSSIONS/ACTIONS:

None

WHY THIS ITEM IS BEFORE THE BOARD:

The Board of Trustees has authority to issue resolutions of recognition.

ARGUMENTS IN SUPPORT:

The attached resolution includes UW's initial list of strategic international universities. In each case, the partners' academic strengths either strongly complement UW's, or offer areas of study and collaboration that UW has robust demand for but does not have the current capacity to offer.

UW's continued warm relations with 60+ other partner institutions are in no way precluded by this list or proposed resolution. Many relationships are extremely strong but limited primarily to one college or unit. The idea is to recognize cross-college, cross-unit cooperation on enhancing internationalization as a goal at UW. It is also useful in identifying strategic regions where we currently have limited partnerships but wish to expand, and in thinking about first-tier institutions that we may have partnerships with that are currently narrow, or that we aspire to have partnerships with in the future.

This list is dynamic, and additional international partner universities may be added annually.

No budget changes are required. Further information about international partnerships can be found at <http://www.uwyo.edu/intprograms>.

ARGUMENTS AGAINST:

None

ACTION REQUIRED AT THIS BOARD MEETING:

The Academics and Research Subcommittee of the UW Board of Trustees has proposed that the Board vote on this resolution at the current meeting.

Resolution Recognizing UW Strategic International Partnerships

Resolved: By the University of Wyoming Board of Trustees

WHEREAS, the University of Wyoming Trustees are committed to cultivating an environment that attracts international scholars and students, enhances students' international awareness through the curriculum, and expands opportunities for students to study abroad;

WHEREAS, recognizing that international education provides critical skills and experiences that achieve these goals;

WHEREAS, recognizing the value of all UW international bilateral relationships, and that successful partnerships are an essential component for sustainable internationalization

WHEREAS, believing that international cooperation allows UW to engage with partners that have complementary academic strengths, and thus enhance the capacity and effectiveness of UW's programs;

WHEREAS, recognizing that particularly close international education partnerships for UW are characterized by active exchanges of students, scholarly collaboration, articulated coursework, dual degrees, collaborative internships, and opportunities for service learning, and are especially successful when focused on UW Areas of Distinction.

WHEREAS, acknowledging the extraordinary dedication of UW's international education partners in creating and sustaining long-term, broad, and deep partnerships; and the dedication and tenacity required to nurture successful international education partnerships that benefit UW students, faculty, and staff;

NOW, THEREFORE, BE IT RESOLVED BY THE UNIVERSITY OF WYOMING BOARD OF TRUSTEES: That we do hereby recognize as Strategic International University Partners for the Academic Year 2010-11, these following institutions, acknowledging with gratitude the extraordinary efforts put forth by these partners, and their exemplary enthusiasm and support for continued collaboration with UW.

- **University of Sunshine Coast – Commonwealth of Australia**
- **Ecolé Supérieure d'Agriculture – Republic of France**
- **Pforzheim University – Federal Republic of Germany**
- **Universidad del Valle de Guatemala – Republic of Guatemala**
- **Shanghai Normal University – People's Republic of China**
- **Shanghai University – People's Republic of China**
- **Saratov State University – Russian Federation**
- **Saratov Agrarian University – Russian Federation**
- **Saratov Socioeconomic University – Russian Federation**

7. Committee of the Whole- CONSENT AGENDA
ASUW Financial Literacy Endowment Waiver, Axelson

CHECK THE APPROPRIATE BOX(ES):

- Work Session
 Education Session
 Information Item
 Other Specify: Committee of the Whole (Consent Agenda)

BACKGROUND AND POLICY CONTEXT OF ISSUE:

Recognizing that University of Wyoming students have a need for greater awareness and education in the area of common personal financial transactions, the ASUW Student Senate adopted Senate Resolution #2248 to establish an endowment in support of financial literacy programming. The legislation creating the endowment in recognition of former ASUW Business Manager A. Lorraine Lupton, was signed by President Kelsey Day on April 21, 2009.

A quasi endowment was established with \$25,000 in unused funds from ASUW's 2008-09 budget for the RSO Funding Board and SafeRide programs for that year. A state match of \$25,000 was received, resulting in a permanent endowment of \$50,000.

Section II. C. 2. of the University of Wyoming Investment Policy states, "Unrestricted gifts (Fund 1600) and funds restricted for purposes other than scholarships (Fund 4400) may be used to create a quasi-endowment. No state appropriations, tuition & fees...may be used for this purpose." Now recognizing this provision, ASUW is retroactively seeking a waiver of the prohibition on using its collected student fees to establish this endowment.

The current Investment Policy does not allow student fees to be used to create an endowment. The Trustees, in March 2010, approved a similar waiver request from ASUW to use excess student fees, drawn from the ASUW Reserve, to create the ASUW Service Exchange Endowment. In preparing that request, the specific provision relating to student fees was identified. The Trustees are being asked to authorize an exception to the Investment Policy allowing the use of student fees to create this quasi-endowment.

WHY THIS ITEM IS BEFORE THE BOARD:

Exceptions to the University of Wyoming Investment Policy must be approved by the Board of Trustees.

ARGUMENTS IN SUPPORT:

This request was generated by student leaders as a means of providing additional services to students and providing a long-term source of revenue in support of financial literacy educational programming.

ARGUMENTS AGAINST:

None

ACTION REQUIRED AT THIS BOARD MEETING:

Approval is sought, via the Consent Agenda, for the request by ASUW for a waiver to the Investment Policy prohibition against using student fees to create an endowment.

PRESIDENT'S RECOMMENDATION:

The President recommends authorizing the exception.

8. Committee of the Whole- CONSENT AGENDA

Proposed Ph.D. Program in Water Resources, Allen

CHECK THE APPROPRIATE BOX(ES):

- Work Session
 Education Session
 Information Item
 Other Specify: Committee of the Whole (Consent Agenda)

BACKGROUND AND POLICY CONTEXT OF ISSUE:

An interdisciplinary group of faculty has developed a proposal for a Ph.D. program in Water Resource Science and Engineering. The proposed title of the degree is Doctor of Philosophy in Hydrologic Science. This proposal responds to Action Item 47 of University Plan 3, the text of which is as follows:

Action Item 47 Interdisciplinary graduate program in water resources. We encourage efforts currently underway to develop an interdisciplinary, cross-college Ph.D. program focusing on water resources. The proposal should include the following elements:

1. **Foundation:** Summarize each contributing department's water-related faculty expertise, level of research, faculty involvement in doctoral education, and curriculum. Also summarize the departments' commitments to sustain stable, well focused cores of faculty expertise in the area. Identify the opportunities for participating faculty members and graduate students to address water-related issues through UW's Office of Water Programs as well as through grants and contracts from federal funding agencies.
2. **Cost:** Summarize the extent to which the new doctoral program will require resources—including faculty positions, institution-supported graduate assistantships, new or renovated space, new support budgets, new library resources, and new technical facilities—that the participating departments and colleges cannot currently supply.
3. **Curriculum:** Summarize the curriculum required for the proposed program, including (a) the unifying core curriculum that will be required of all participating students, (b) any new courses not currently offered, and (c) the degree to which these new courses will replace existing courses.
4. **Interdisciplinarity:** Identify the scientific and engineering expertise in water resources to be contributed, at a minimum, by the Colleges of Engineering and Applied Science, Arts and Sciences, and Agriculture. We welcome contributions from other colleges as well.

To support this degree proposal, the Deans of Engineering and Applied Science, Agriculture, and Arts and Sciences will develop a brief prospectus identifying the stable faculty strength and scholarly focus areas that each college intends to maintain in water

resources. The feasibility and timing of such a degree program will hinge in part on the availability of funding for the critical elements of the proposal.

In response, faculty experts and administrators from the Colleges of Agriculture and Natural Resources, Arts and Sciences, Engineering and Applied Science, and Law have developed a detailed proposal that contains a description of the academic elements of the program, a discussion of the resources in place to support it, a plan for its organization and administration, and an implementation schedule. The detailed proposal is viewable at the following URL:

http://www.uwyo.edu/acadaffairs/plans/degree/UW-WRESE_PhD_Proposal.pdf

Here are the main points:

1. **Foundation.** The program will focus on the hydrologic science aspects of water-resource processes and management. The intellectual foundation for this focus resides in the contributing academic departments and programs, which include but are not necessarily limited to Atmospheric Science, Botany, Chemical Engineering, Civil and Architectural Engineering, Geography, Geology and Geophysics, Haub School & Ruckelshaus Institute of Environment and Natural Resources, Mathematics, Mechanical Engineering, Renewable Resources, School of Energy Resources, Statistics, Zoology, and the Program in Ecology.
2. **Cost.** Pooled faculty resources from the contributing departments are sufficient to deliver the required coursework and to supply the appropriate faculty mentors for graduate students. Sufficient resources, in the form of state-funded graduate assistantships currently assigned to the contributing departments, are in place to allow for the recruitment of graduate students into the program. In most cases, students recruited into the program will be able expect to move onto research assistantships funded through external contracts and grants secured by faculty members affiliated with the program.
3. **Curriculum.** The proposed Water Resources Environmental Science and Engineering (WRESE) Program will be configured to deliver a stimulating mix of courses in four different focus areas as shown in Figure 1: Groundwater Hydrogeology, Watershed Hydrology, Sediment Transport and fluvial Processes, Geomorphology, and Water Quality/Biogeochemistry. Figure 1 indicates that the four focus areas will be set within the broad context of human, social, legal, and economic contexts. Accordingly, faculty members with expertise in these broader aspects are encouraged to participate in the Program.

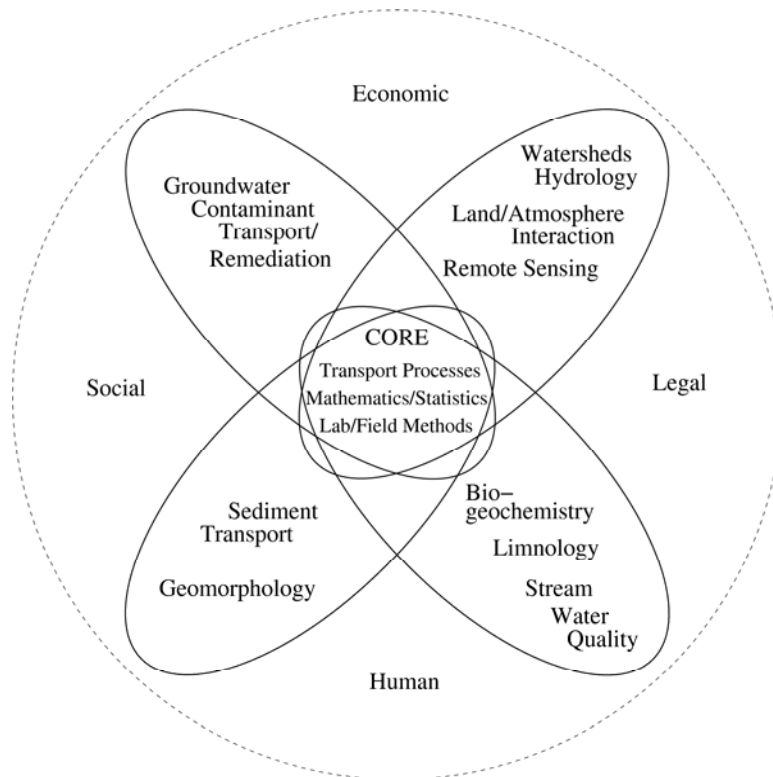


Figure 1: Disciplinary links in water resources and hydrology.

This curriculum articulates with UW's existing Masters Program in Water Resources, a vehicle by which M.S. candidates in a variety of departments can augment their discipline-specific curriculum with additional coursework related to water resources.

The following is an outline of the proposed curricular requirements:

Core Competencies (required of all students):

1. Advanced mathematics or statistics. Example courses include: Differential Equations (Math 2310), or one or more courses from the mathematics/statistics categories listed in Appendix 3, with the approval of the WRESE program graduate committee.
2. CE 5435 Environmental Transport Processes (3 cr.)
3. Field and Laboratory Measurements in Hydrosiences (New Course, 2 cr.)

Required Participation by all WRESE Students:

1. WRESE Weekly Seminar Series (New Course, 1 cr.)

Courses will be selected by each student's Ph.D. advisory committee with the following four focus areas, as appropriate for the student's interests and educational goals:

1. Groundwater Hydrogeology and Contaminant Transport/Remediation
2. Watershed Physical Hydrology and Remote Sensing
3. Erosion, Sediment Transport, and Geomorphology
4. Surface Water Quality and Biogeochemistry

4. Interdisciplinarity. Wyoming is the archetypal headwater state, with numerous factors, spanning numerous disciplines, affecting runoff assessment, groundwater recharge, water quality, ecological considerations, water use and consumption, and linkages with other natural resources. These concerns prompt a real need for education and research at the Ph.D. level but not confined to one academic department. Though several UW departments have reasonably productive M.S. programs dealing with water-related topics, these programs do not by themselves have the necessary interconnectedness to deliver Ph.D.-level expertise in hydrology as a field of inquiry.

The following is a list of initial faculty affiliates:

David M. Bagley, Professor, Civil & Architectural Engineering
Jonathan A. Brant, Assistant Professor, Civil & Architectural Engineering
Patricia J. S. Colberg, Professor, Civil & Architectural Engineering
Carrick M. Eggleston, Professor, Geology and Geophysics
Robert Ettema, Professor, Civil & Architectural Engineering
Brent E. Ewers, Associate Professor, Botany
Carol Frost, Professor, Geology and Geophysics
Frederico Furtado, Professor, Mathematics
Axcel Garcia-y-Garcia, Assistant Professor, Plant Sciences
Victor Ginting, Assistant Professor, Mathematics
Robert O. Hall, Jr., Associate Professor, Zoology and Physiology
Jeff Hamerlinck, Research Scientist, Geography and WYGISC
Kristiana Hansen, Assistant Professor, Department of Agricultural and Applied Economic
Neil Humphrey, Professor, Geology & Geophysics
Mohan R. Junna, Professor, Civil & Architectural Engineering
Thijs J. Kelleners, Assistant Professor, Renewable Resources
Carl J. Legleiter, Assistant Professor, Geography
Scott N. Miller, Associate Professor, Renewable Resources
Jay B. Norton, Assistant Professor, Renewable Resources
Fred L. Ogden, Professor, Civil & Architectural Engineering
Ginger Paige, Assistant Professor, Renewable Resources
Gi-Hyeon Park, Assistant Professor, Civil & Architectural Engineering
Katta J. Reddy, Professor, Renewable Resources
Cliff Riebe, Assistant Professor, Geology & Geophysics
Bryan N. Shuman, Assistant Professor, Geology and Geophysics
Jacqueline Shinker, Assistant Professor, Geography
Thomas L. Thurow, Professor, Renewable Resources
Michael A. Urynowicz, Associate Professor, Civil & Architectural Engineering
George F. Vance, Professor, Renewable Resources
David G. Williams, Professor, Renewable Resources
Ye Zhang, Assistant Professor, Geology and Geophysics

PRIOR RELATED BOARD DISCUSSIONS/ACTIONS:

The Academics and Research Subcommittee of the UW Board of Trustees discussed this proposal at its March meeting and unanimously supported it.

WHY THIS ITEM IS BEFORE THE BOARD:

The Board of Trustees has authority over the adoption of UW's degree programs and majors.

ARGUMENTS IN SUPPORT:

UW faculty housed in a number of academic departments offer coursework, advise and mentor graduate students and conduct research that falls under the umbrella of hydrology. This new doctoral major will formally provide these faculty and students a degree program in the field, which in turn will help promote the cross-departmental and cross-college teaching and research needed to bolster UW's stature in the field.

Water resources and hydrology are well established fields internationally. The scientific and engineering literature in these areas rests on contributions from several branches of engineering, soil science, geology, geophysics, mathematics, statistics, meteorology, and climatology. Of more recent vintage are contributions from the life sciences, ranging from microbiology to ecology.

ARGUMENTS AGAINST:

Any degree program requires a commitment of time, expertise, and resources from the faculty.

ACTION REQUIRED AT THIS BOARD MEETING:

The proposal appears on the consent agenda for approval by the Board.

PRESIDENT'S RECOMMENDATION:

President Buchanan recommends approval.

9. Committee of the Whole- CONSENT AGENDA
NCAR Mobilization Expenses, Vinzant

CHECK THE APPROPRIATE BOX(ES):

- Work Session
 Education Session
 Information Item
 Other Specify: Committee of the Whole (Consent Agenda)

BACKGROUND AND POLICY CONTEXT OF ISSUE:

If final approval is provided by the National Science Board for the NCAR/Wyoming Supercomputing Center (NWSC) in the first week of May 2010, the selected General Contractor for the NWSC project, Saunders Construction, will prepare for mobilization. If Saunders can mobilize to the selected property soon, instead of waiting until final NSF documentation is signed and contracts are in place, several hundred thousand dollars in overall construction costs are likely to be saved.

In order to avoid these excess construction costs, UW and UCAR would like to pay, in equal shares, the up-front mobilization costs, amounting to \$170,775 for each party. This action would ensure that this project moves forward in a timely fashion, avoiding unnecessary construction delays and saving on the total project cost.

UW proposes to pay for these up-front costs through available financial resources, as UW has on two previous occasions for architectural and engineering (A&E) costs in 2008 and again in 2009.

The legislation providing for the State of Wyoming's commitment to the NWSC included up to \$4.25 million of the original \$20 million appropriation which could be used for A&E purposes. UW has been advised that total A&E costs will come in more than \$200,000 less than the \$4.25 million. As a result, UW will seek a 2011 supplemental budget amendment to allow a portion of excess A&E funds to be used to repay UW for its share of the up-front mobilization expenses, in the amount of \$170,775. The total commitment by Wyoming will not be increased. This scenario simply allows the project to move forward expeditiously and sets in motion a request to the Legislature for reimbursement from previously appropriated funds.

PRIOR RELATED BOARD DISCUSSIONS/ACTIONS:

- November 2008: BOT approval of A&E expenses in support of NCAR
- May 2009: BOT approval of A&E expenses in support of NCAR
- August 2009: Approval of the operating budget including NCAR continuation
- September 2009: Presentation on the status of the NCAR project

WHY THIS ITEM IS BEFORE THE BOARD:

Board authorization is required to allow the University to commit University funds for the mobilization expenses in support of the NWSC project.

ARGUMENTS IN SUPPORT:

By authorizing the University to support the mobilization expenses, the Board will enable the University to keep the project moving forward in a timely manner as well as avoiding unnecessary costs.

ARGUMENTS AGAINST:

None.

ACTION REQUIRED AT THIS BOARD MEETING:

Approval by the University of Wyoming Board of Trustees to proceed with expenditures of \$170,775 in support of the NCAR project.

PRESIDENT'S RECOMMENDATION:

The President recommends that the Board of Trustees of the University of Wyoming approve the proposed expenditure of University funds in support of NWSC mobilization expenses as described in this item.

1. INFORMATION ONLY ITEM

Quarterly Report on Investments (Quarter ending 3/31/2010), Lowe

CHECK THE APPROPRIATE BOX(ES):

- Work Session
 Education Session
 Information Item
 Other Specify:

**UNIVERSITY OF WYOMING
FIXED INCOME INVESTMENTS - COST BASIS
SUMMARY FOR THE PERIOD
1/1/10 - 3/31/10**

	University Managed	
	Prior Quarter 12/31/2009	Current Quarter 3/31/2010
Current Unrestricted, Auxiliary & Other Funds	77,796,971	96,211,327
Current - GE Trust Account	20,043,329	20,043,329
Excellence in Higher Education	4,749,325	4,790,828
Other Restricted Funds	2,081,024	2,012,110
Unrestricted Gifts and Grants	9,214,774	9,316,631
Contract and Grants	27,915,158	30,544,750
Student Loans	6,146,286	6,623,642
Bond Series 2005 Construction Funds	753,141	362,999
Plant Funds	27,824,554	25,380,475
Agency Funds	112,944	111,158
APHEC	3,743,736	3,233,628
Total Pooled Investments	180,381,242	198,630,877
Average Return - Pooled Investments	0.43%	0.31%
Merrill Lynch FlexiCash Program – Bank of New York Custodian (US Agency Securities investments pool with daily access)	25,700,000	42,900,000
Certificate of Deposit	2,400,000	2,400,000
Gov't Sponsored Enterprises Discount Notes	152,281,242	153,330,887
Total Investments	180,381,242	198,630,887

Investments are changed every Monday for increases or decreases in available cash, regardless of the amount. Investments are changed on any day on which the increase or decrease is a minimum of \$10,000.

2. INFORMATION ONLY ITEM

Progress Report/Change Orders, Vinzant

CHECK THE APPROPRIATE BOX(ES):

- Work Session
- Education Session
- Information Item
- Other Specify:

**Capital Construction
 Progress Report as of April 9, 2010**

The following gives an accounting of the progress and activity of construction and design since the last Trustees meeting. Also reported are approved change orders.

PROJECTS IN CONSTRUCTION

1. Information Library and Learning Center (ILLC)

Construction Manager at Risk	FCI Constructors, Inc.
	Longmont, CO
Guaranteed Maximum Price	\$38,075,000
Contract Substantial Completion Date	August 31, 2009
Substantial Completion Issued	November 6, 2009

(In Thousands)	Total	Admin	Constr	Design	FF&E	Misc	Cntngcy
Budget	50,030	1,346	38,075	2,700	4,430	1,788	1,691
Expended	46,676	1,139	36,955	2,641	4,430	1,248	263
Obligated	673	44	0	24	0	0	605
Other Funding	500	0	500	0	0	0	0
Un-obligated	3,181	163	1,620	35	0	540	823

Remarks Office furniture and end panels scheduled to be installed in May. Project is in warranty period.

2. Information Technology Facility

Construction Manager at Risk	Haselden Construction/Pope Construction
	Centennial, CO/Mills, WY
Guaranteed Maximum Price	\$25,931,436
Contract Substantial Completion Date	December 5, 2008
Extended	December 18, 2008
Substantial Completion Issued	August 24, 2009

(In Thousands)	Total	Admin	Constr	Design	Tech	FF&E	Misc	Cntngcy
Budget	34,941	1,084	26,000	2,347	1,333	2,172	791	1,214
Expended	32,844	557	26,000	2,347	1,103	1,407	222	1,208
Obligated	167	81	0	0	47	33	0	6
Un-obligated	1,930	446	0	0	183	732	569	0

Remarks Some additional modifications to the mechanical systems will need to be constructed during an opportune time in 2010 when it can be scheduled during warmer weather. Building commissioning is ongoing through the season changes

3. College of Business

Construction Manager at Risk	Adolfson & Peterson Construction Aurora, CO
Guaranteed Maximum Price	\$44,188,467
Contract Substantial Completion Date	April 27, 2010 except for Landscaping
Extended	May 13, 2010 June 15, 2010 for the Landscaping

(In Thousands)	Total	Admin	Constr	Design	Tech	FF&E	Misc	Cntngcy
Budget	57,619	1,538	44,017	3,679	2,746	2,974	794	1,871
Expended	47,688	738	42,332	3,343	0	171	380	724
Obligated	7,476	140	1,685	168	2,558	1,922	0	1,003
Un-obligated	2,455	660	0	168	188	881	414	144

Remarks Furniture is being installed in the renovated portion. Final cleaning and inspection is underway in the addition. Commissioning and balancing of the mechanical system is underway in the renovation. Landscaping is in progress. Building is scheduled to be substantially complete in mid May.

4. College of Law – Moot Court

Construction Manager at Risk	Drahota Commercial, LLC Fort Collins, CO
Guaranteed Maximum Price	\$3,693,215
Contract Substantial Completion Date	May 1, 2009
Substantial Completion Issued	June 30, 2009

(In Thousands)	Total	Admin	Constr	Design	FF&E	Misc	Cntngcy
Budget	4,945	135	3,710	468	189	90	353
Expended	4,894	118	3,710	434	189	90	353
Obligated	64	17	13	34	0	0	0
Un-obligated	(13)	0	(13)	0	0	0	0

Remarks All work is complete with the exception of some modifications to the Audio Visual equipment. The work is in progress. Building commissioning is ongoing through the season changes during the first year for both the new construction and retro-commissioning for the existing building. Additional funds will be added for expanded landscaping.

5. Berry Biodiversity and Conservation Center

Construction Manager at Risk	Haselden Construction Centennial, CO
Guaranteed Maximum Price	\$14,453,560
Contract Substantial Completion Date	September 6, 2010
Extended	October 19, 2010

(In Thousands)	Total	Admin	Constr	Design	Tech	FF&E	Misc	Cntngcy
Budget	20,000	595	14,467	1,447	250	2,144	435	662
Expended	3,524	252	2,054	1,218	0	0	0	0
Obligated	13,106	104	12,413	229	0	0	0	360
Un-obligated	3,370	239	0	0	250	2,144	435	302

Remarks All bids are complete and within the GMP. The building is on schedule for dry-in by the end of June and occupancy in December, 2010.

CHANGE ORDERS

1. Information Library and Learning Center (ILLC)

Statement of Contract Amount

Original Contract	\$38,075,000.00
Change Order 1-15	- <u>912,720.00</u>
Adjusted Contract	\$37,162,280.00
	Add 152 calendar days

2. Information Technology Facility

Statement of Contract Amount

Original Contract	\$25,938,496.00
Change Order 1-3	+ <u>1,323,674.62</u>
Adjusted Contract	\$27,262,170.62

3. College of Business

Item 1	Revise details for sprinkler coordination in the atrium	Add:	15,429.00
Item 2	Add window lights to doors in the link structure	Add:	1,786.00
Item 3	Remove sprinklers from atrium and add at interior window	Add:	2,535.00
Item 4	Add wood trim to two door frames	Add:	817.00

Item 5 Revise the art lights in the boardroom	Add:	1,084.00
Item 6 Add data drops for wireless equipment	Add:	2,222.00
Item 7 Add lightning protection	Add:	2,488.00
Item 8 Expand two storage rooms at stairs seven and eight	Add:	9,389.00
	<u>Total Change Order No. 21</u>	Add: \$35,750.00

Item 1 Revise the counter tops in Room 301 from wood to stone	Add:	2,007.00
Item 2 Revise the roof drainage of the penthouse structure	Add:	32,640.00
Item 3 Add water shut off valves to all toilet rooms	Add:	4,572.00
Item 4 Add bollards for card readers at two entry doors	Add:	1,889.00
	<u>Total Change Order No. 22</u>	Add: \$41,108.00

Item 1 Revise the infrastructure for AV Equipment	Add:	1,897.00
Item 2 Provide rough-in for seven additional room schedule tablet devises	Add:	3,948.00
Item 3 Add a VAV Box and related work in the multi-media room	Add:	8,259.00
	<u>Total Change Order No. 23</u>	Add: \$14,104.00

Statement of Contract Amount

Original Contract	\$44,188,467.00
Change Order 1-23	+ 832,339.00
Adjusted Contract	\$45,020,806.00

4. College of Law – Moot Court

Statement of Contract Amount

Original Contract	\$3,693,215.00
Change Order 1-5	+ 577,935.17
Adjusted Contract	\$4,271,150.17

5. Berry Biodiversity and Conservation Center

Item 1 Installation of perimeter drain	Add:	7,872.00
Item 2 Embed plates at columns	Add:	5,505.00
Item 3 Foundation damproofing at Lecture	Add:	662.00
Item 4 Fill at WRI foundations	Add:	1,812.00
Item 5 Sidewalk, signage and lights for pedestrian safety	Add:	5,695.00
Item 6 Removal of exposed stack at Power Plant	Add:	4,071.00
	<u>Total Change Order No. 3</u>	Add: \$25,617.00

Statement of Contract Amount

Original Contract	\$14,569,939.00
Change Order 1-3	+ 220,556.00
Adjusted Contract	\$14,790,495.00

Add 43 calendar days

3. INFORMATION ONLY ITEM

State Matching Funds for Endowments, Buchanan

CHECK THE APPROPRIATE BOX(ES):

- Work Session
 Education Session
 Information Item
 Other Specify:

STATE MATCHING FUNDS FOR ATHLETICS

ANONYMOUS DONOR

This is to inform you regarding approval for Wyoming Legislative Matching Funds for a \$25,000.00 gift from an ANONYMOUS DONOR designated for the War Memorial Stadium Enhancements fund. This donor has prior state matches to various allocations totaling \$600,000.00.

This ANONYMOUS DONOR is a friend of the University of Wyoming.

Archuleta, George and Dianna

This is to inform you regarding approval for Wyoming Legislative Matching Funds for a \$125,000.00 pledge from Mr. and Mrs. Archuleta designated for the Athletics Campaign Unrestricted fund. Mr. and Mrs. Archuleta have a prior \$500,000.00 state matched pledge to the same allocation.

Mr. and Mrs. Archuleta are friends of the University of Wyoming.

Brown, Maurice and Bonnie

This is to inform you regarding approval for Wyoming Legislative Matching Funds for a \$25,000.00 gift from Mr. and Mrs. Brown designated for the War Memorial Stadium Enhancements fund.

Mr. Brown attended the University of Wyoming but did not graduate, and Mrs. Brown is a friend of the University of Wyoming.

Ritchie, Cody and Patsy

This is to inform you regarding approval for Wyoming Legislative Matching Funds for a \$50,000.00 pledge from Mr. and Mrs. Ritchie designated for the War Memorial Stadium Enhancements fund. Mr. and Mrs. Ritchie have a prior \$25,000.00 state matched pledge to the Athletics Campaign Unrestricted fund.

Mr. Ritchie graduated from the University of Wyoming in 1987 with a Bachelor of Science in Business Management, and Mrs. Ritchie is a friend of the University of Wyoming.

Scarlett, William R. and Victoria

This is to inform you regarding approval for Wyoming Legislative Matching Funds for a \$25,000.00 pledge from Mr. and Mrs. Scarlett designated for the Athletics Campaign Unrestricted fund.

Mr. Scarlett graduated from the University of Wyoming in 1992 with a Bachelor of Science in Business Management, and Mrs. Scarlett is a friend of the University of Wyoming.

Silber, Scot and Nancy

This is to inform you regarding approval for Wyoming Legislative Matching Funds for a \$30,000.00 pledge from Mr. and Mrs. Silber designated for the Athletics Campaign Unrestricted fund.

Mr. Silber graduated from the University of Wyoming in 1982 with a Bachelor of Science in Pharmacy, and Mrs. Silber is a friend of the University of Wyoming.

STATE MATCHING FUNDS FOR ACADEMIC FACILITIES

Peabody Energy Corporation

This is to inform you regarding approval for Wyoming Legislative Matching Funds for a pledge of \$2,000,000.00 from Peabody Energy Corporation for the School of Energy Clean Coal Technology Center.

Peabody Energy Corporation is an entity.

STATE MATCHING FUNDS FOR ENDOWMENTS

Friends and Family of Samuel Knight

This is to inform you regarding approval for Wyoming Legislative Matching Funds for gifts and pledges of \$79,337.72 from friends and family of Samuel Knight for the University of Wyoming Geological Museum Samuel H. Knight Memorial Endowment.

This group of friends and family of Samuel Knight are both alumni and friends of the University of Wyoming.

4. INFORMATION ONLY ITEM

Development Report, Blalock

CHECK THE APPROPRIATE BOX(ES):

- Work Session
- Education Session
- Information Item
- Other Specify:

BACKGROUND AND POLICY CONTEXT OF ISSUE:

The UW Foundation has agreed to report on donor giving to the UW Board of Trustees.

WHY THIS ITEM IS BEFORE THE BOARD:

This report is before the Board to advise them of the most current giving totals.

COMMENTS:

There are two spreadsheets within the FY2010 Monthly Giving Report through March 31, 2010. The first includes all gifts, while the second focuses on annual fund gifts. Both tables are broken down by the unit receiving the gifts.

University of Wyoming, Foundation
FY 2010 Monthly Giving Report through January 31, 2010
All Gifts

FUND	Current Month		FY 2010 to date						FY 2009 Commitments		
	DONORS	FACE VALUE	Cash & Cash equivalent			New Commitments YTD			STATE MATCHING	DONORS	FACE VALUE
			DONORS	OUTRIGHT	GIK	PLEDGE PMTS	NEW PLEDGES	TOTAL			
AGRIC	67	\$3,457	755	\$490,746	\$175	(\$108,000)	\$0	\$382,921	\$112,500	822	\$520,156
AHC	17	\$8,925	241	\$58,640	\$8,495	(\$11,000)	\$10,000	\$66,135	\$0	338	\$158,344
ALUMNI	0	\$0	1	\$4,000	\$0	\$0	\$0	\$4,000	\$0	0	\$0
A & S	199	\$93,869	1951	\$1,038,475	\$408	(\$380,784)	\$140,000	\$798,099	\$256,467	2227	\$4,093,630
ATHLETICS	1390	\$897,649	5330	\$3,611,120	\$428,870	(\$1,728,286)	\$462,500	\$2,774,204	\$784,098	5265	\$4,372,825
BUSINESS	115	\$1,026,684	897	\$2,027,203	\$0	(\$1,571,000)	\$20,000	\$481,203	\$79,015	836	\$2,212,454
EDUCATION	108	\$80,711	666	\$735,583	\$0	(\$670,000)	\$0	\$65,583	\$11,500	731	\$968,187
ENERGY	5	\$325	19	\$566,835	\$2	(\$465,000)	\$3,100,000	\$3,201,837	\$3,200,000	6	\$1,550,252
ENGINEERING	159	\$182,481	1292	\$749,761	\$0	(\$381,677)	\$120,000	\$488,085	\$25,129	1249	\$1,192,713
IENR	10	\$11,864	98	\$85,230	\$0	\$0	\$0	\$85,230	\$0	113	\$91,373
HEALTH SCI	135	\$12,820	756	\$334,837	\$446	(\$45,000)	\$0	\$290,283	\$13,740	773	\$1,884,780
LAW	21	\$14,601	278	\$207,384	\$0	(\$125,986)	\$7,000	\$88,398	\$10,000	286	\$601,289
LIBRARY	35	\$2,473	228	\$73,189	\$0	(\$40,500)	\$0	\$37,689	\$2,000	241	\$94,792
OUTREACH	1072	\$57,627	6691	\$580,557	\$0	(\$8,400)	\$6,000	\$578,157	\$21,054	6863	\$706,653
STU AFFRS	33	\$2,008	665	\$42,153	\$3,024	(\$7,003)	\$0	\$38,174	\$0	380	\$36,566
UW ART MUS	6	\$255	638	\$234,757	\$152,452	(\$52,250)	\$150,000	\$484,959	\$160,000	641	\$460,571
UNIV. FUND	127	\$8,672	913	\$100,124	\$0	\$0	\$0	\$100,124	\$0	924	\$120,148
OTHER	30	\$109,963	337	\$6,554,929	\$0	(\$1,243,808)	\$50,000	\$5,459,892	\$98,495	245	\$2,776,297
GIFTS NOT YET BOOKED											
TOTAL	3,338	\$2,514,384	18,414	17,495,521	593,874	(\$6,838,694)	\$4,065,500	\$15,424,972	\$4,773,997	18,427	\$21,841,028
TOTAL YTD GOAL \$30,000,000											
<i>**Total donors do not reflect column totals. Donors may give to more than one unit/division.</i>											

University of Wyoming, Foundation
FY 2010 Monthly Giving Report through March 31, 2010
Annual Gifts

FUND	FY 2010 GOALS*	Current Month		FY 2010 to date		FY 2009 to same date		FY 2010 AF % of Goal
		DONORS	AMOUNT	DONORS	TOTAL	DONORS	TOTAL	
AGRIC	\$ 110,000	67	\$3,257	626	\$72,695	681	\$101,272	66.09%
AHC	\$ 70,000	12	\$425	223	\$33,646	324	\$39,414	48.07%
ALUMNI	\$ -	0	\$0	0	\$0	0	\$0	N/A
A & S	\$ 475,000	172	\$14,861	1707	\$274,617	1913	\$297,591	57.81%
ATHLETICS	\$ 2,165,000	1334	\$285,794	5057	\$1,507,698	4799	\$1,405,889	69.64%
BUSINESS	\$ 250,000	90	\$22,651	794	\$137,481	736	\$122,347	54.99%
EDUCATION	\$ 75,000	107	\$5,711	628	\$45,078	563	\$38,696	60.10%
ENERGY	\$ -	5	\$325	15	\$1,835	2	\$250	N/A
ENGINEERING	\$ 300,000	127	\$19,565	1165	\$209,991	1144	\$305,118	70.00%
IENR	\$ 65,000	9	\$364	89	\$48,230	102	\$36,123	74.20%
HEALTH SCI	\$ 140,000	133	\$11,310	699	\$93,846	490	\$66,073	67.03%
LAW	\$ 75,000	10	\$401	205	\$30,223	210	\$34,390	40.30%
LIBRARY	\$ 35,000	32	\$2,373	206	\$22,430	226	\$40,183	64.08%
OUTREACH	\$ 775,000	1069	\$51,597	6681	\$538,551	6830	\$569,644	69.49%
STU AFFRS	\$ 35,000	26	\$1,145	610	\$26,855	359	\$21,058	76.73%
UW ART MUS	\$ 55,000	6	\$255	180	\$32,142	200	\$29,101	58.44%
UNIV. FUND	\$ 175,000	127	\$8,672	910	\$100,074	924	\$120,148	57.18%
OTHER	\$ -	22	\$2,463	204	\$29,393	175	\$38,569	N/A
GIFTS NOT YET BOOKED								
TOTAL	\$4,800,000	3,200	\$431,168	18,414	\$3,204,783	18,427	\$3,265,864	66.77%

****Total Donors do not reflect Column totals. Donors may give to more than one unit/division.**