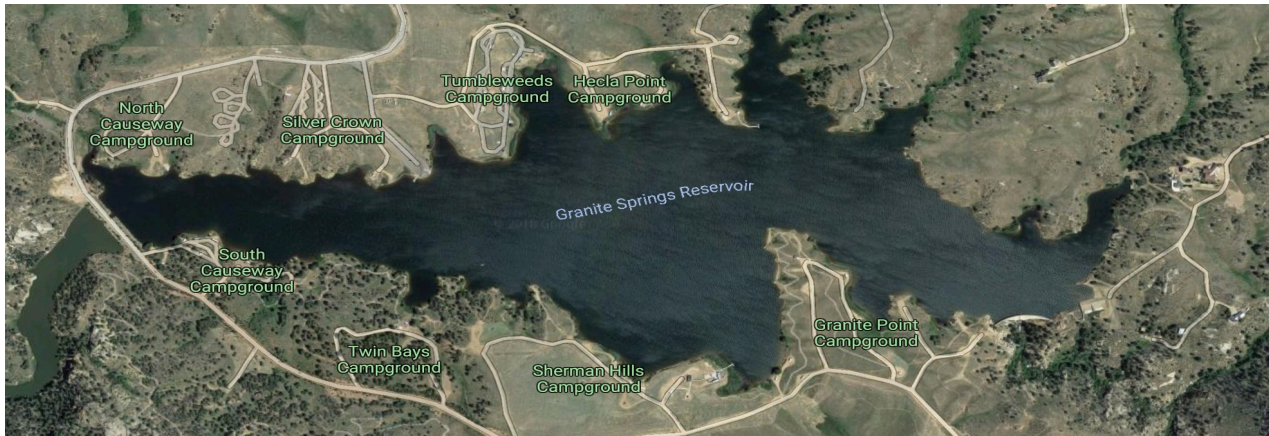


# Wyoming High Plains Roundup

**Sept. 13th - 14th 2019 at Curt Gowdy State Park**



## @ Camp Russell Campground Shelter

Located 24 Miles West of Cheyenne off State Route 210 (Happy Jack Rd.) between Laramie and Cheyenne

If coming from the South on I-25, take Exit 10D, Missile Drive/Happy Jack Rd. Exit

Sponsored by **University of Wyoming Amateur Radio Club & Shy-Wy ARC** of Cheyenne

## **Agenda**

### **FRIDAY**

5:00 PM

- **Registration - \$5 Fee per person includes 1 ticket for door prizes and 1 ticket for main drawing.**
- Additional tickets for main drawing \$1 each or 6 for \$5.

**Friday evening: at the Camp Russell shelter**

- Cookout, Bring your own
- Campfire if allowed by any fire restrictions

## **SATURDAY**

**Free coffee!**

**8:00 am: Registration Continues**

**Tailgate swapping - Ham Radio & Related Gear**

- Bring your own table

**NO LARGE COLLECTIONS OF COMPUTER GEAR!**

**Noon: Burgers, Dogs, and a Chili Cookoff, please bring side dishes and deserts if you wish.**

**Early Afternoon: Business meeting** following the Saturday meal

- Volunteers accepted to sponsor the 2020 High Plains Roundup.

- **Prize Drawings**
- Grand Prize: Pending
- Second Prize: Pending
- Third Prize: Pending
- Forth Prize: Pending
- And many other HAM Radio related prizes

**Dinner - On your own**

- Campfire (if permitted)

## **SUNDAY**

**Free Coffee!**

**Early Morning:**

- **Breakfast** with friends
- **Cleanup Shelter**

**Please follow all State Park Rules and keep a cleancamp.**

**Curt Gowdy State Park fees apply to all visitors.**

**Camping:** The 3 camping spot at the Camp Russell Groupsite have been reserved by another party, but Reserved and Space Available sites are available just adjacent (very close to) to Group site in Camp Russell. First Come, First Served. Check availability at <http://wyoparks.state.wy.us/>



Happy Jack Campground

Fee Booth

### Camp Russell Curt Gowdy State Park

- Campsites**
- O** First Come First Served
- R** Reservable
- H** (Camp)ground Host
- II** ADA Accessible
- m** Playground
- ||||** Picnic Table
- W** Picnic Sites
- SI** Boat Ramp
- IIII** Restroom
- Trails
- Roads**
- Asphalt
- Authorized use only
- =** Gravel
- S** Sand
- ==** Two Track
- (Camp)grounds
- Reservoir
- Site Boundary

HJ61

J64

Camp Russell  
(t,m)

Group Site

Silver Crown Campground

SC48

SC49

SC50

SC51

SC52

SC54

SC56

Feet  
0 50 100 200

BOAT RAMP RD

