

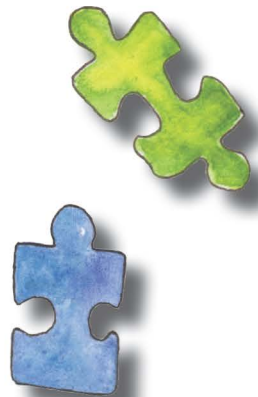
Wyoming Family Mentorship Program Autism Spectrum Disorders

About Us

The **Wyoming Family Mentorship Program** is made possible by the Wyoming Institute for Disabilities (WIND) at the University of Wyoming and the JFK Partners at the University of Colorado School of Medicine, a leader in pediatric and neurodevelopmental disabilities. WIND and JFK Partners are members of the national network of University Centers for Excellence in Developmental Disabilities and work to assist individuals with developmental disabilities, their families, and professionals through education, training, and early intervention programs.

WIND envisions a Wyoming where all people can participate in everyday community life as they choose. For more information about WIND, please visit www.uwyo.edu/wind.

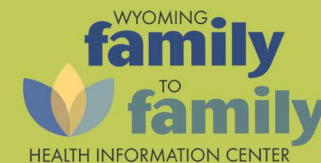
**You Don't
Have To
Go It Alone**



Scan QR Code to
visit our website



Wyoming Institute for Disabilities
UW College of Health Sciences
Dept. 4298, 1000 E. University Ave.
Laramie, Wyoming 82071
(307) 766-2761



Welcome

The Wyoming Family Mentorship program was designed to ensure that families navigating the autism spectrum have the support, resources, and community they need to thrive. We pair newly diagnosed families with families who've been navigating the spectrum for some time—trained mentors who know the joys and challenges of raising a child with autism. We believe that having a community of supporting parents is a critical part of services for families with children on the autism spectrum.

Mentors Matched to Your Needs

We take into consideration several factors when matching you with a mentor: the age and gender of your children, geographic location, and similarity of diagnoses. Our priority is to match you with someone who can best support you and offer resources tailored to your unique family and needs.



What to Expect

- Interested families will need to fill out an application.
- Once applications are received by WIND, families will be contacted to complete an intake interview.
- Based on information from the intake interview, families will then be matched with mentors.
- Families and mentors will work with a trained facilitator to create an action plan for their child.
- Mentors will provide resources and support to families.
- Mentors will follow-up with families as needed.

“ Having another mom to talk to who had been there was huge for me. She helped me take those first steps after my son was diagnosed, find supports and services, and it was really nice to know I was not alone. ”



Real Families, Real Solutions

Autism impacts the whole family. Our mentors are sensitive to the demands on you, your children, and your family. We work to help you find supports and services that are right for you. These include:

- Finding and discussing interventions.
- Locating resources in your community.
- Supporting you at school meetings and doctors' appointments.
- Giving you a safe space to talk.



To be matched with a mentor, please contact:

Wyoming Family to Family
WyoF2F@uwyo.edu
(307) 766-2761

