

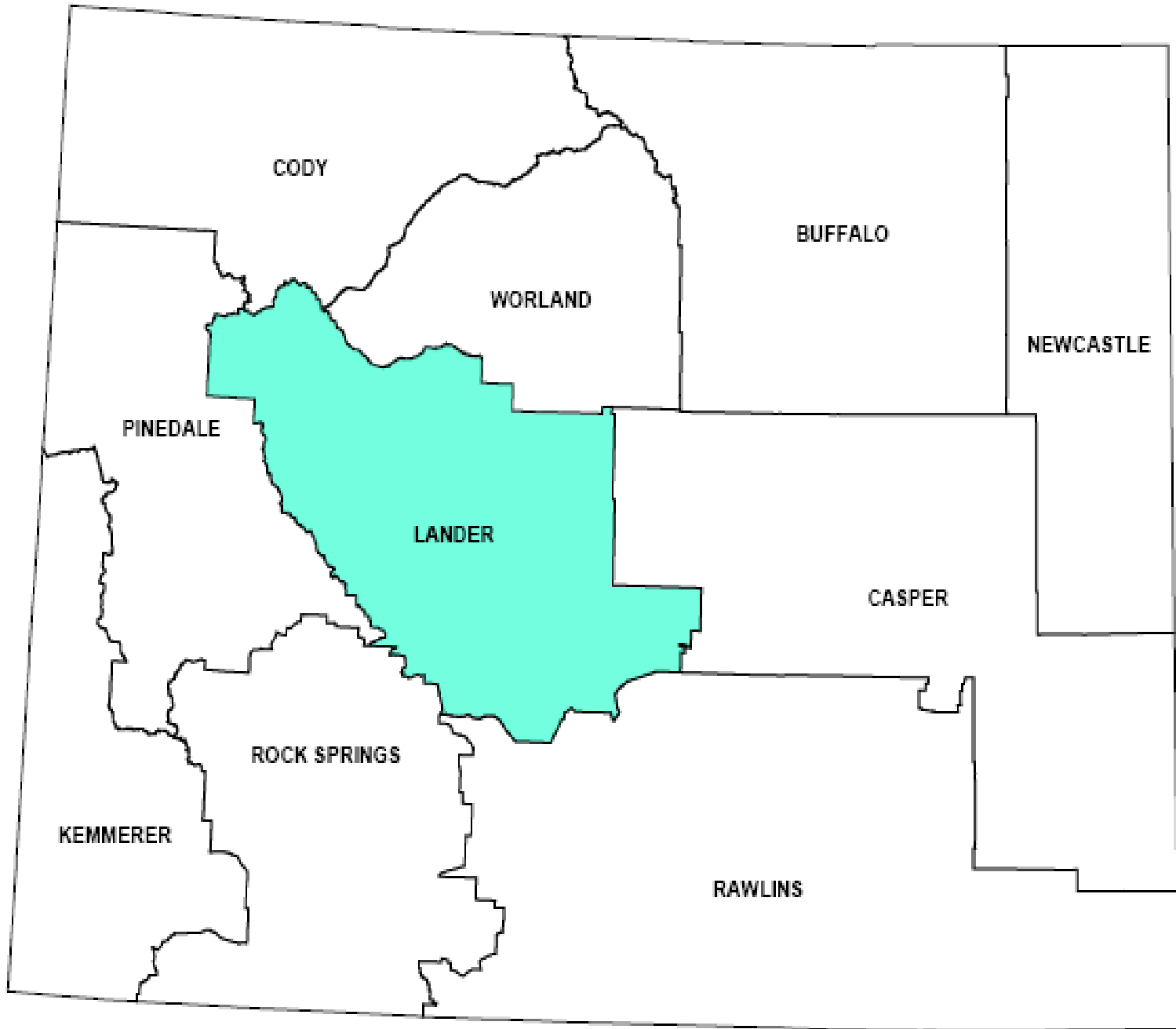
Mineral Extraction Wind River Basin

Barton Stam

UWCES NW Area SMRR



- 
- A photograph of a vast, rolling landscape covered in green vegetation, likely a prairie or grassland. The horizon is flat and distant, with a sky filled with white and grey clouds. The overall scene is bright and natural.
- **Mineral Rights**
 - **Leasable minerals**
 - **Locatable minerals**
 - **Salable Minerals**



CODY

BUFFALO

NEWCASTLE

WORLAND

PINEDALE

LANDER

CASPER

ROCK SPRINGS

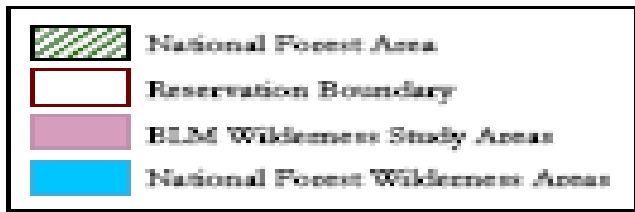
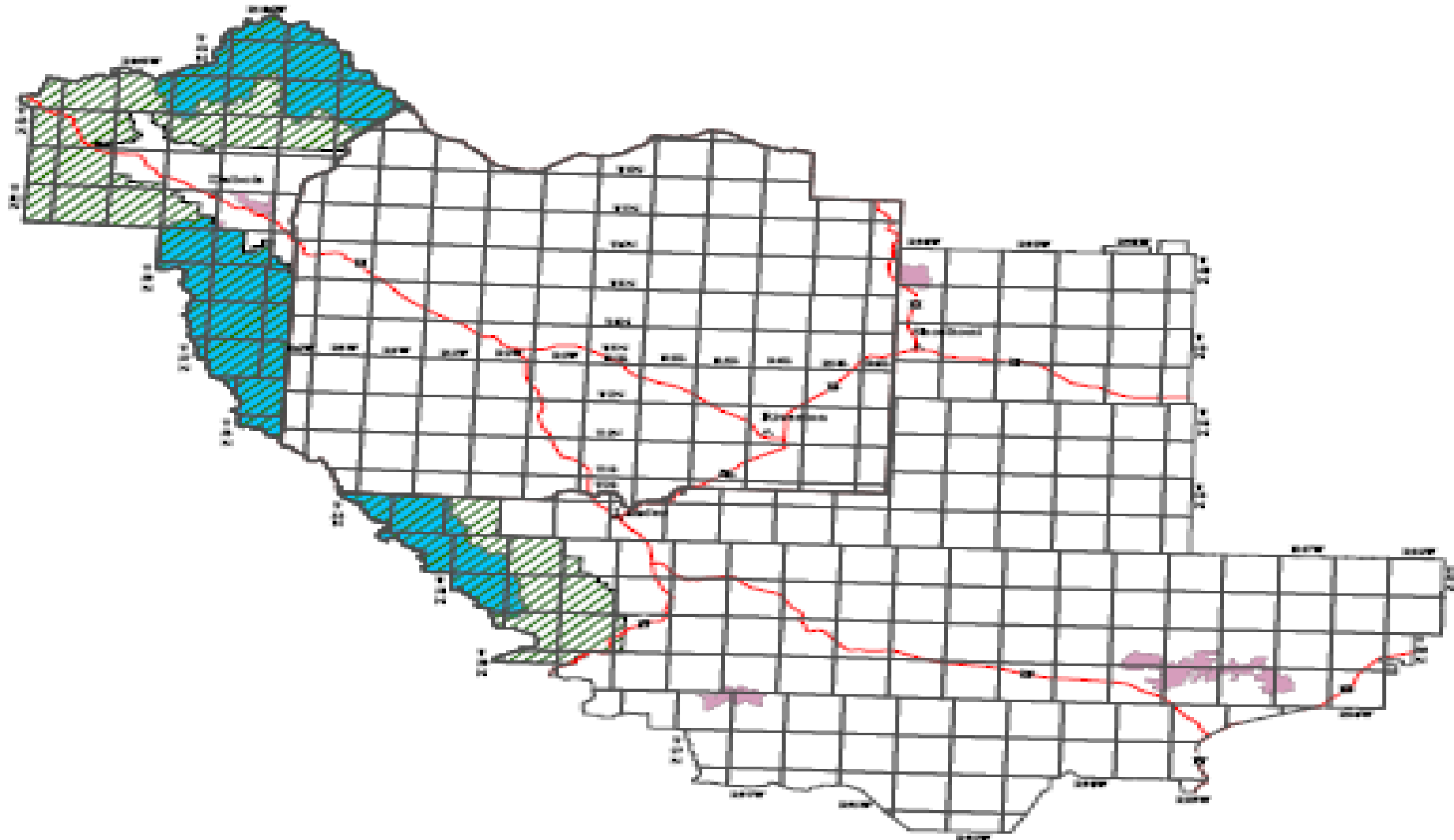
KEMMERER

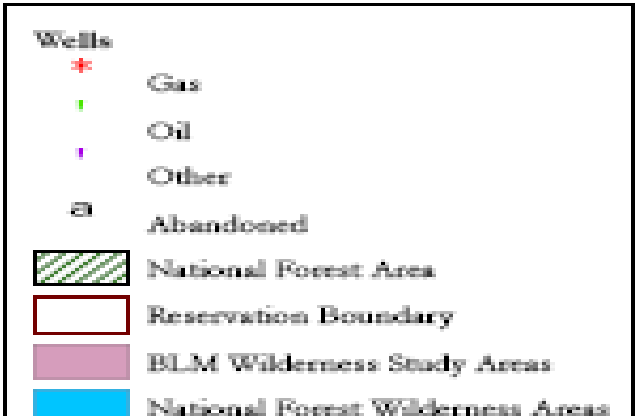
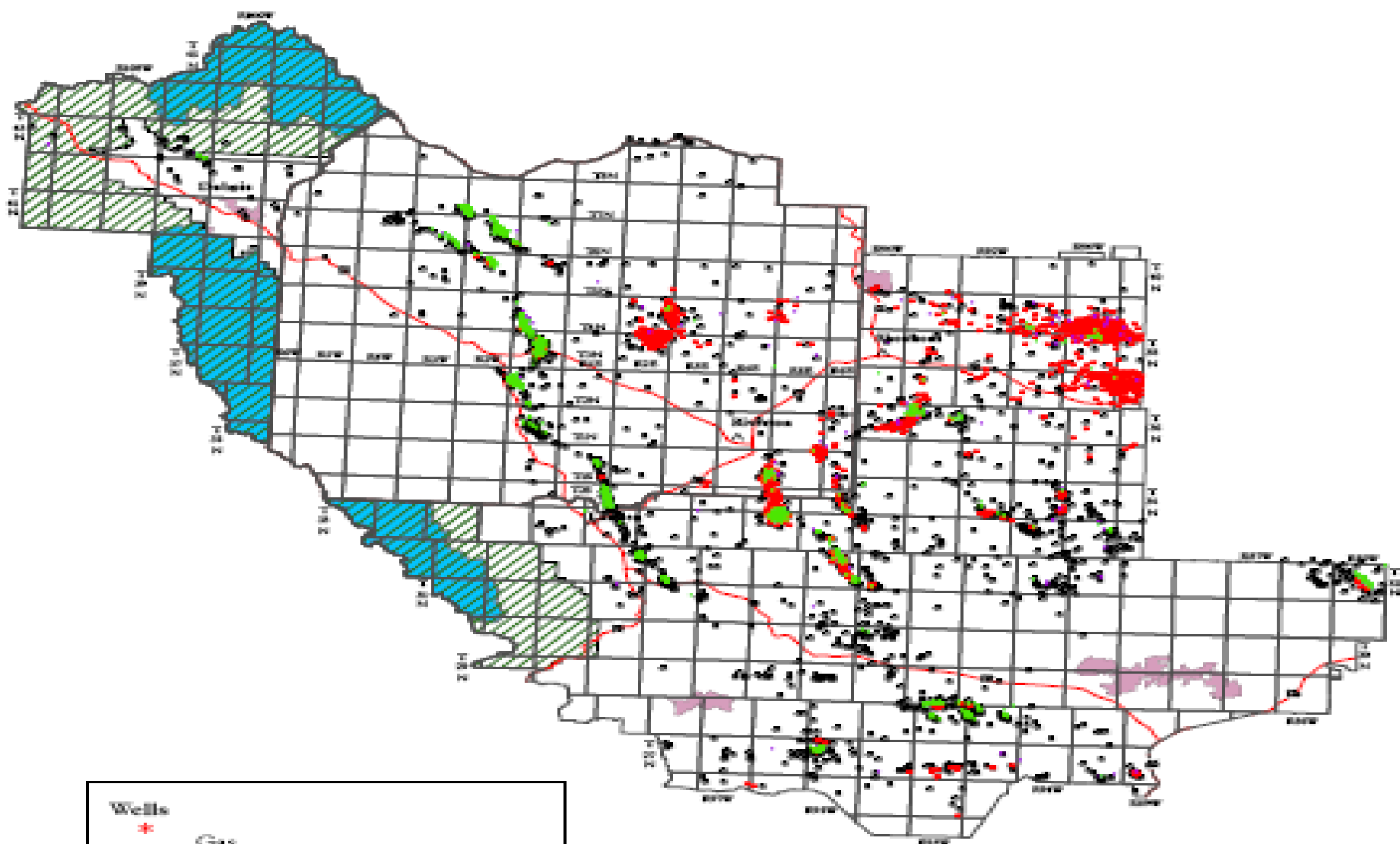
RAWLINS



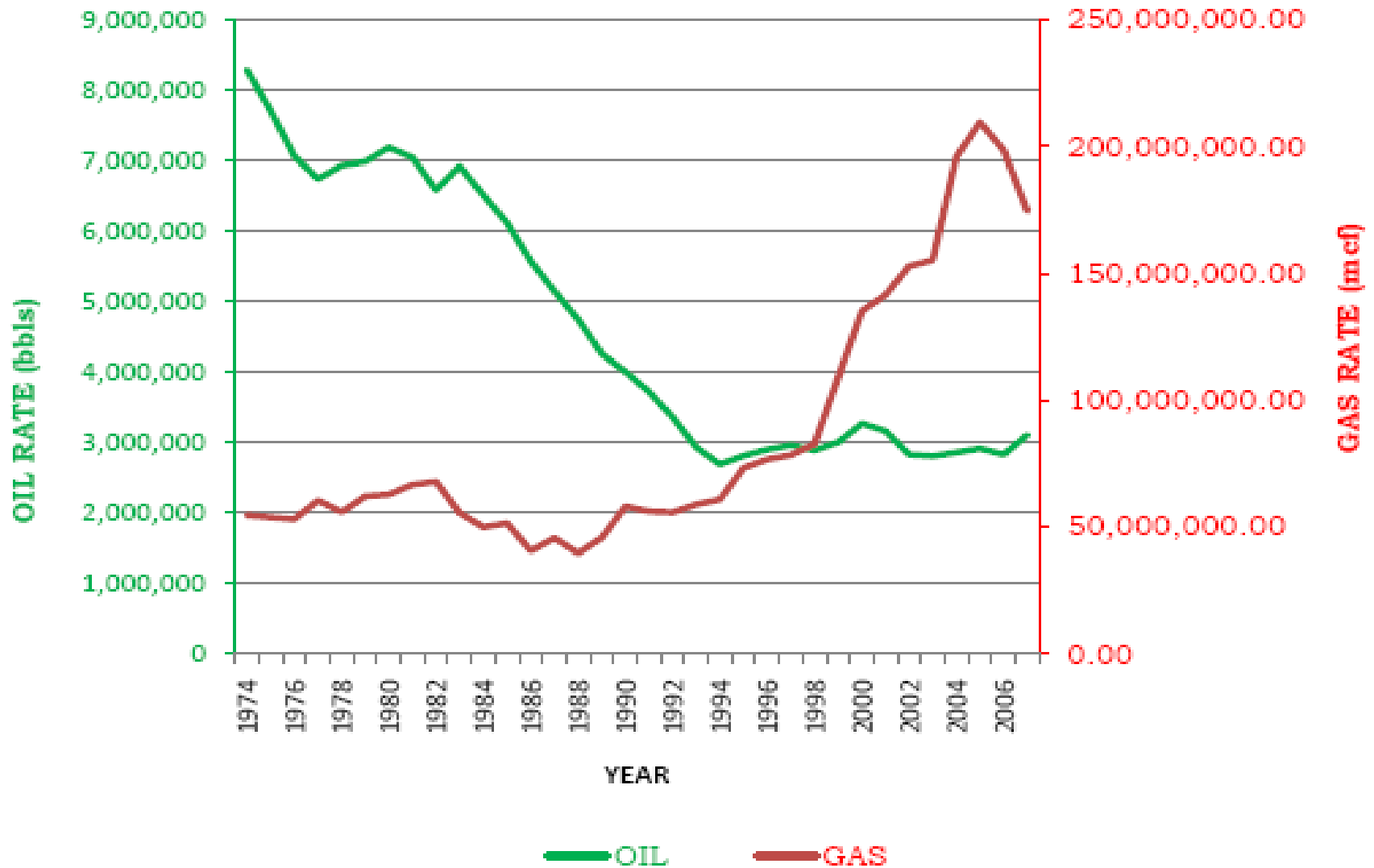
1:3,000,000







ANNUAL OIL AND GAS PRODUCTION



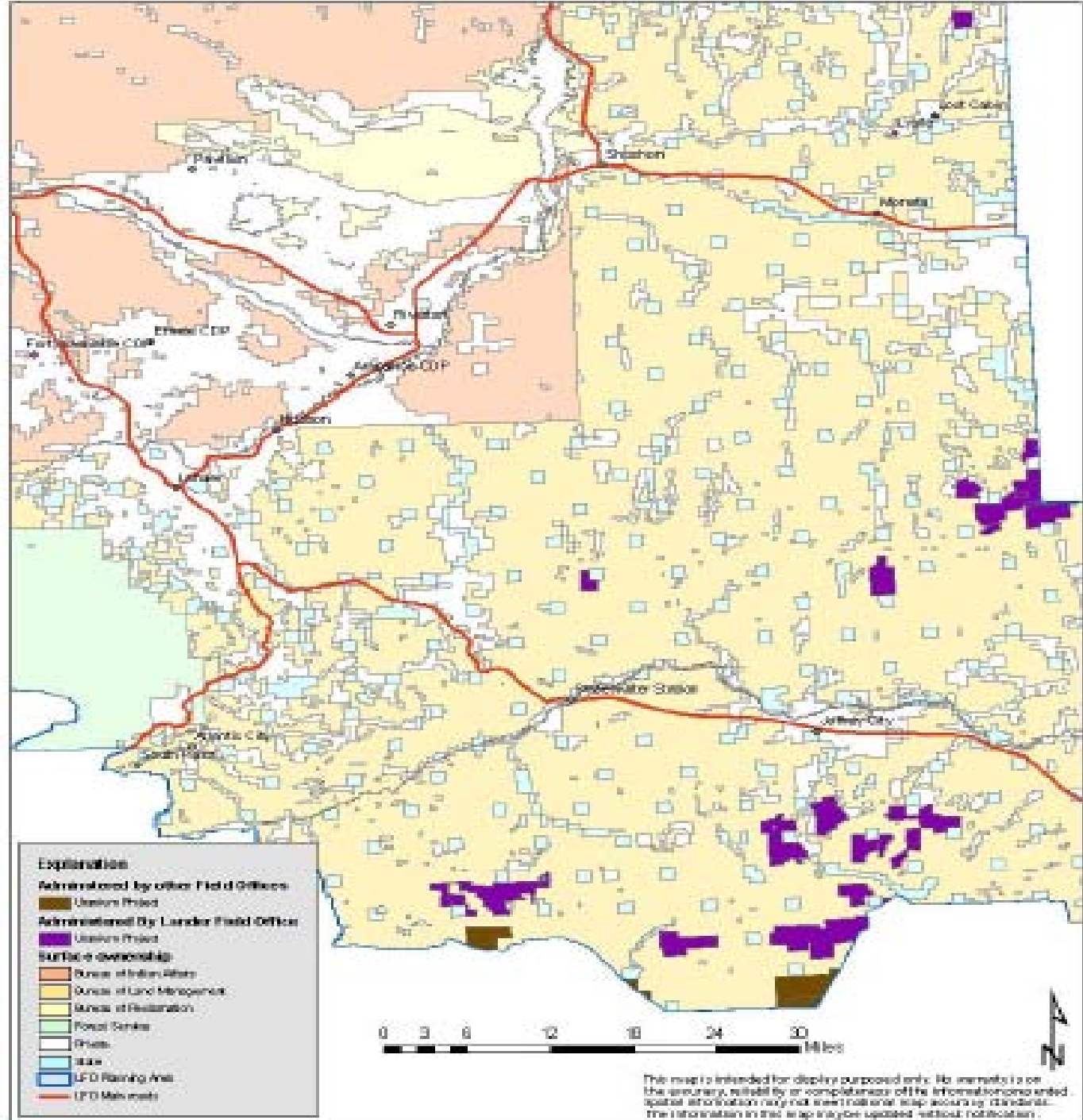
bbls = barrels

mcf = thousand cubic feet

Table 11.

Lander Planning Area surface disturbance associated with wells projected for the base line development scenario for the 2008-2027 period and for existing active wells.

Disturbance Associated With All New Drilled Wells and Existing Active Wells (Short-Term Disturbance)								
Wells			Acres of Surface Disturbance					
Type	Total	BLM Managed	Flow Lines¹	Access Roads	Well Pad	Total	BLM Managed	
New Wells	Non-coalbed Exploratory	338	244	2	7	3.5	4,219	3,050
	Non-coalbed Development	2,153	1,557	0.5	2	3.5	12,921	9,342
	Coalbed gas	861	518	0.5	2	3	4,736	2,849
	Deep	75	48	2	7	7	1,200	773
	Wells/Disturbance	3,427	2,367				23,075	16,014
Existing wells	Non-coalbed Exploratory	293	113	0	7	2	2,638	1,018
	Non-coalbed Development	1,870	722	0	2	2	7,480	2,887
	Coalbed gas	28	5	0	2	1.5	98	18
	Deep	73	47	0	7	3	730	470
	Wells/Disturbance	2,264	887				10,945	4,393
Total Wells/Disturbance		5,691	3,254				34,021	20,407



Explanation

Administered by other Field Offices

- Utahns Project

Administered by Lander Field Office

- Utahns Project

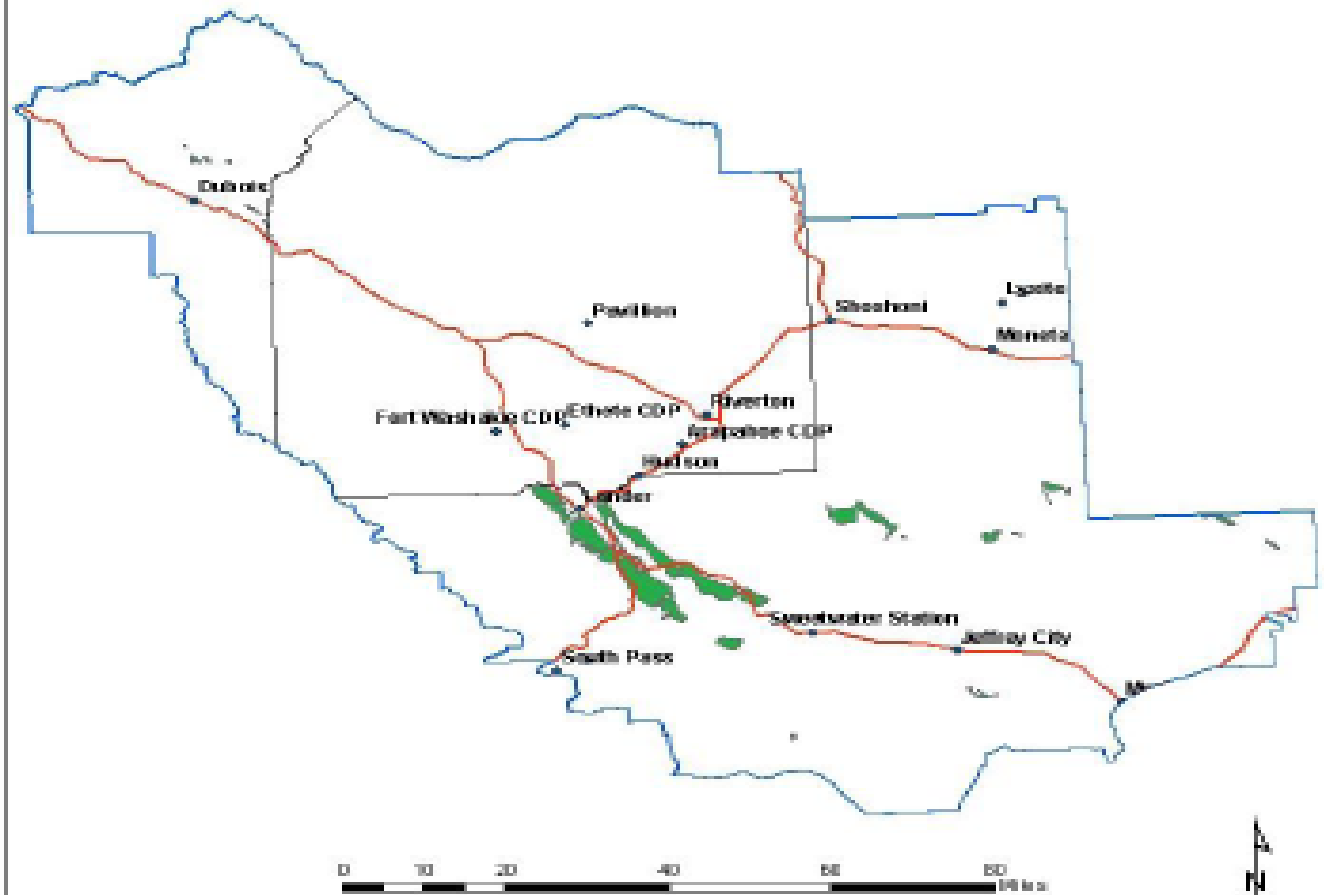
Land ownership

- Bureau of Indian Affairs
- Bureau of Land Management
- Bureau of Reclamation
- Forest Service
- Private
- State
- LFD Planning Area
- LFD Main roads



This map is intended for display purposes only. No warranty is on the accuracy, reliability or completeness of the information or any other spatial information may not meet national map accuracy standards. The information in this map may be updated without notification.

Bentonite Occurrence

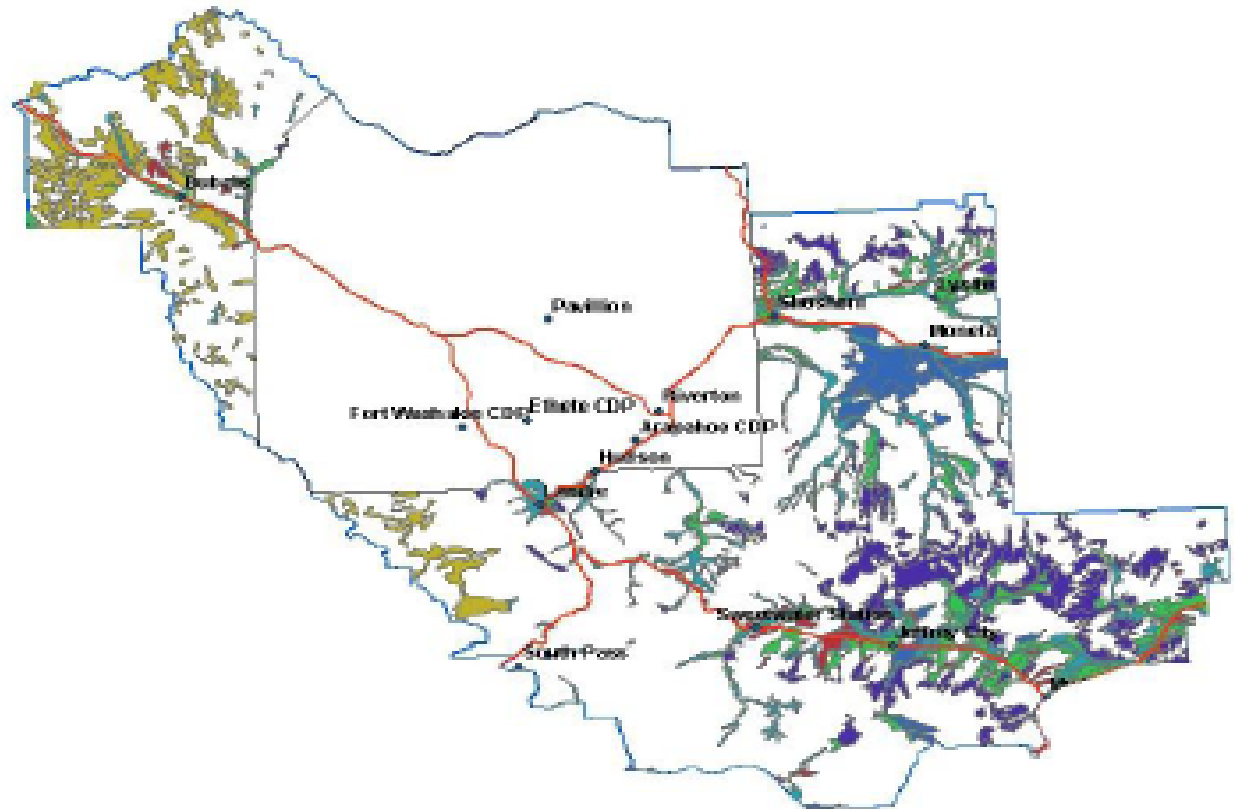


Explanation

-  Planning area
-  Main highways
- USBR Bentonite KMDAs**
-  Bentonite formations undifferentiated

This map is intended for display purposes only. No warranty is made on the accuracy, reliability or completeness of the information displayed. Spatial information may not meet national map accuracy standards. The information in this map may be updated with no notice.

Mineral Material Occurrence Aggregates (Sand, gravel)



Explanation

- Planning area
- Main Highway

Surficial geologic deposits

Description

- alluvium
- sand deposits
- silt deposits
- gravel deposits
- terrace deposits



This map is intended for display purposes only. No warranty is made as to the accuracy, reliability or completeness of the information displayed. Spatial information may not meet national map accuracy standards. The information in this map may be updated with notification.

- 328 Arapahoe
- Thermopolis, Wy.
82443
- 864-3421
- brstam@uwyo.edu

