

Sage-grouse Habitat Conservation Efforts in Wyoming: The Sage-grouse Executive Order

Scott Gamo
Habitat Protection Program
Wyoming Game and Fish Department



- ❑ Development of the SGEO
- ❑ Implementing the SGEO
- ❑ SGEO Conservation Measures



Sage-grouse, so what's the big deal?



Sage-grouse, so what?

1. A declining species


Sage-grouse, so what?

1. A declining species
2. As a sagebrush obligate may reflect habitat condition

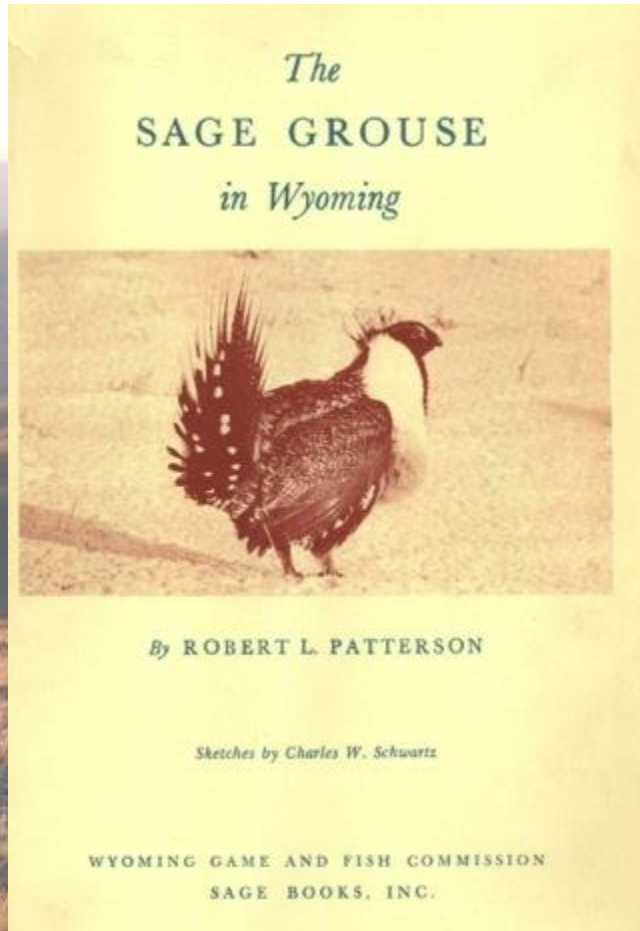
Sage-grouse, so what?

1. A declining species
2. As a sagebrush obligate may reflect habitat condition
3. May serve as an umbrella species

Sage-grouse, so what?

1. A declining species
2. As a sagebrush obligate may reflect habitat condition
3. May serve as an umbrella species
4. Potential for listing 

Historical perspective...



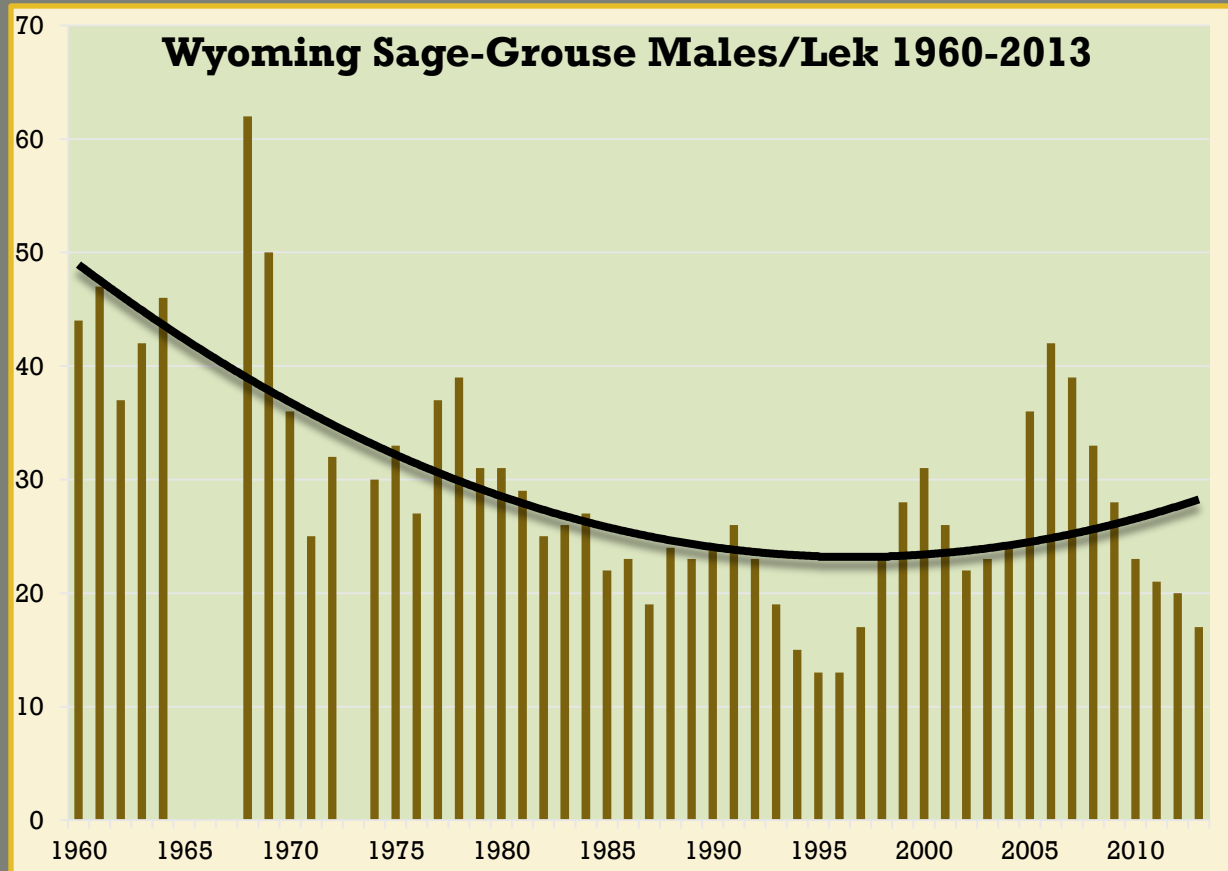
***The Sage Grouse in Wyoming*, Robert L. Patterson (1952) called for the preservation and maintenance of extensive and contiguous areas of native vegetation in order to conserve sage-grouse.**

Fast forward...

1990's:

- **natural gas development intensifies**
- **concern for sage-grouse amplifies**
- **impacts research initiated**
- **petitions to list filed**

DECLINING SAGE-GROUSE POPULATIONS



Timeline...

- **2005: USFWS “not warranted” decision**
- **2007: USFWS was sued**
- **2010: USFWS “warranted but precluded”**
- **Next decision review is due 2015**

State of Wyoming's strategy

- 2007: Governor's Sage-Grouse Implementation Team
- 2008: 2010: Governor Fruedenthal's Sage-grouse Executive Order – conserve habitat and populations
- 2011: Governor Mead's Executive Order - conserve habitat and populations



- The USFWS listing decision document supports Wyoming's Core Area Policy as a potentially effective regulatory mechanism if it is implemented as planned

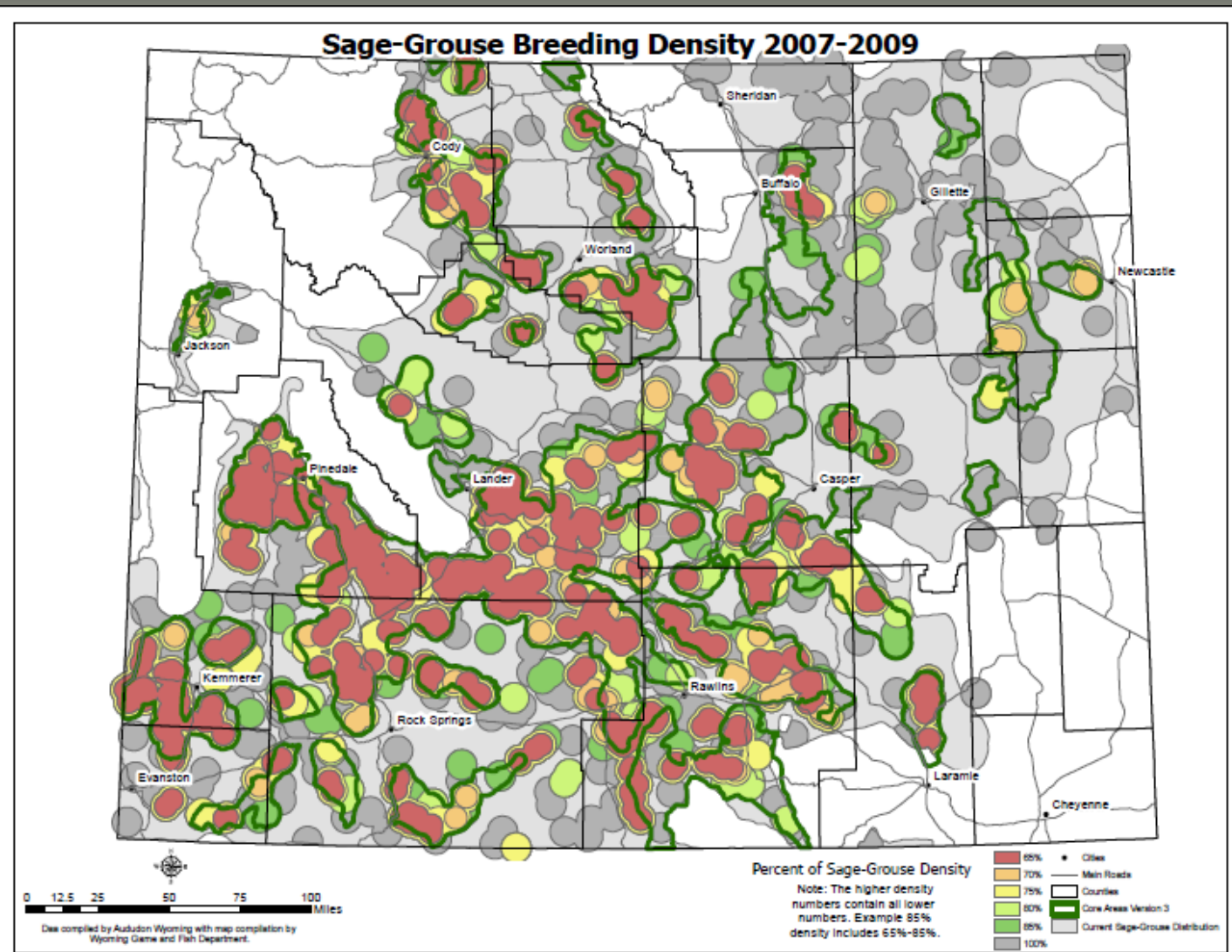


Summary of Actions

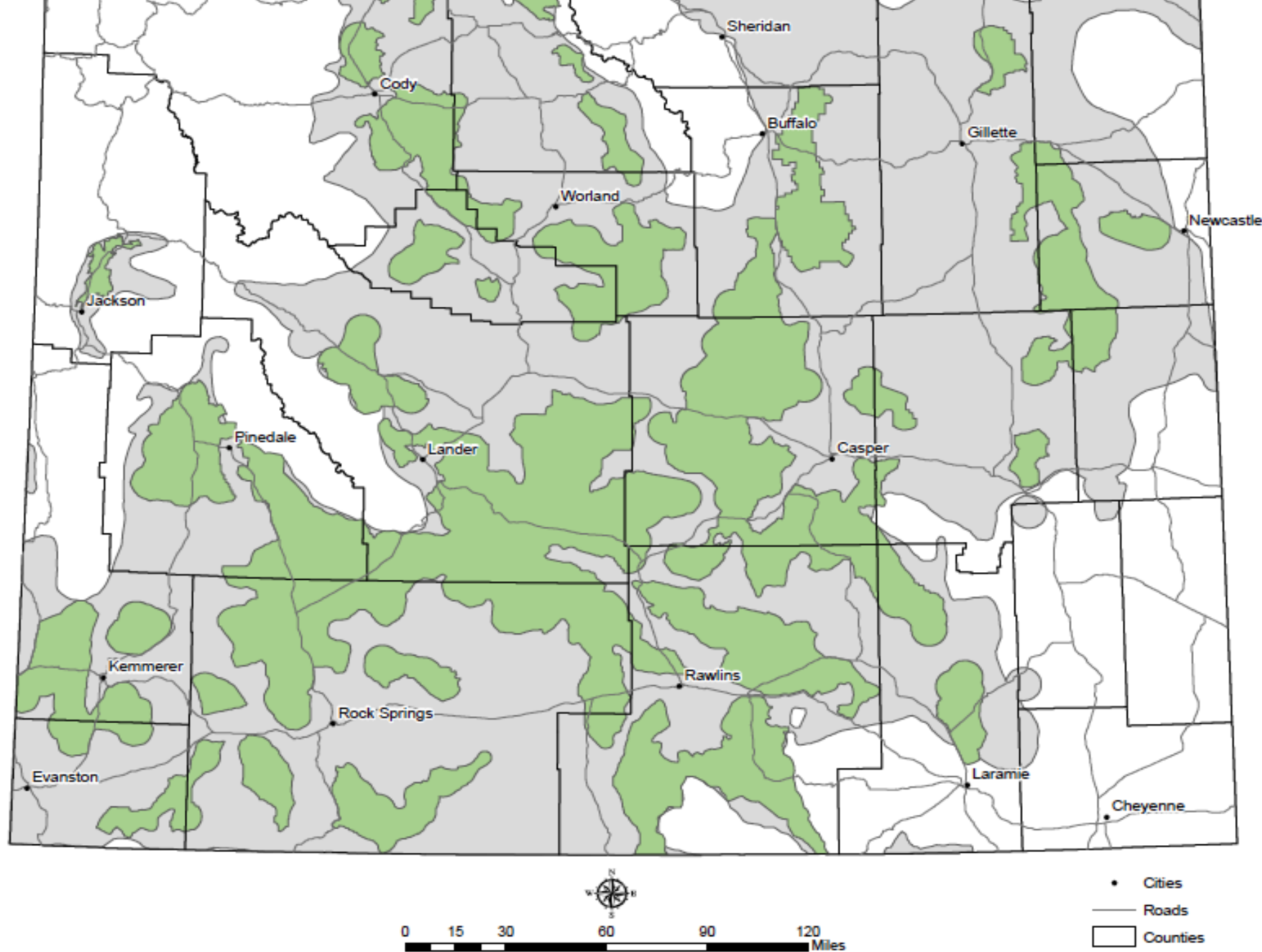
- 2010: USFWS decision document supports WY core policy
- 2010: WY BLM Sage-Grouse Instruction Memorandum – consistent with core
- 2010: Core Area revision
- 2011: Governor Mead's Executive Order
- 2012: BLM Instruction Memorandum
- 2014: BLM RMP 9 and USFS sustainability

Development of Core Area



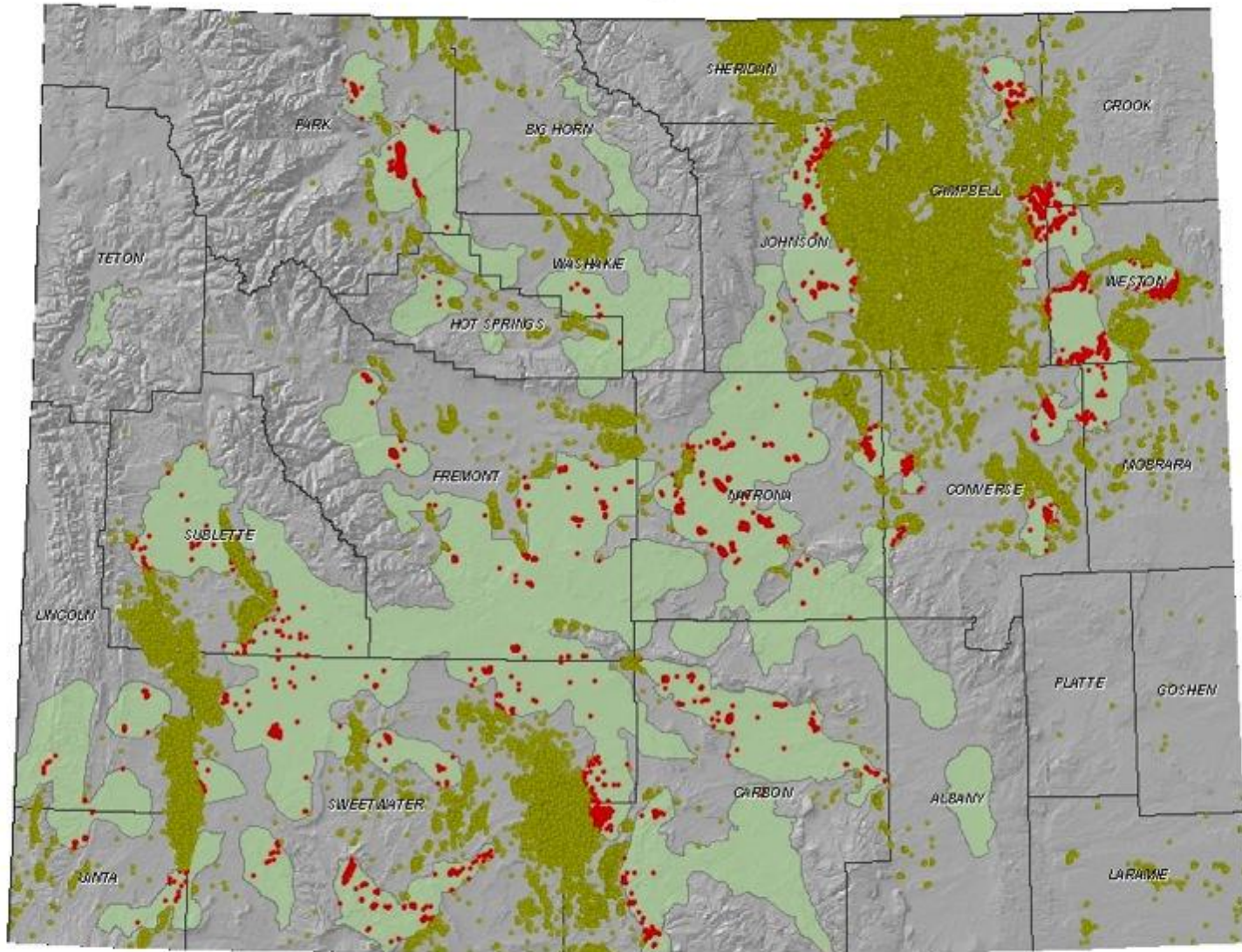


Core Area V.3 captures 82% of males on leks and associated nesting habitat on <25% of the surface area of the state.



Core Areas shown were updated from the version two core areas. The version three core areas were updated under the direction of the Governor by the Sage-Grouse Local Working Groups and the

Oil and Gas Wells and Sage-Grouse Core Areas



Nyssa Whitford
Sage-Grouse GIS Analyst
Lander Regional Office
07.08.10



- Counties
- Core Areas Version 3
- Producing Oil and Gas Wells Outside Core 01.11.10
- Producing Oil and Gas Wells Within Core 01.11.10

Governor's Order 2011-05

- 1. Management by state agencies should focus on the maintenance and enhancement of Greater Sage-Grouse habitats, populations, and connectivity areas.....
- 3. New development or land uses within Core...should be authorized or conducted only when it can be demonstrated that the activity will not cause declines to Greater Sage-Grouse populations.

Governor's Order 2011-05

- 1. Management by state agencies should focus on the **maintenance and enhancement of Greater Sage-Grouse habitats**, populations, and connectivity areas.....
- 3. New development or land uses within Core...should be authorized or conducted only when it can be demonstrated that the activity will not cause declines to Greater Sage-Grouse populations.

SGIT Research Recommendations



- Understand the impact of wind energy on sage-grouse.
- Document the effectiveness of different sagebrush habitat treatments.
- Identify and understand habitat uses by sage-grouse.
- Better understand connectivity.
- Better define the effects of other forms of development on sage-grouse.

SGIT Research Recommendations



- Understand the impact of wind energy on sage-grouse.
- Document the effectiveness of different sagebrush habitat treatments.
- Identify and understand habitat uses by sage-grouse.
- Better understand connectivity.
- Better define the effects of other forms of development on sage-grouse.

Sage-grouse Conservation Measures: Core Area Policy



Sage-grouse Conservation Measures

❖ Stipulations



Sage-grouse Conservation Measures

- ❖ Stipulations
- ❖ DDCT (density disturbance calculation tool)



Sage-grouse Conservation Measures

- ❖ Stipulations
- ❖ DDCT (density disturbance calculation tool)
- ❖ Restoration

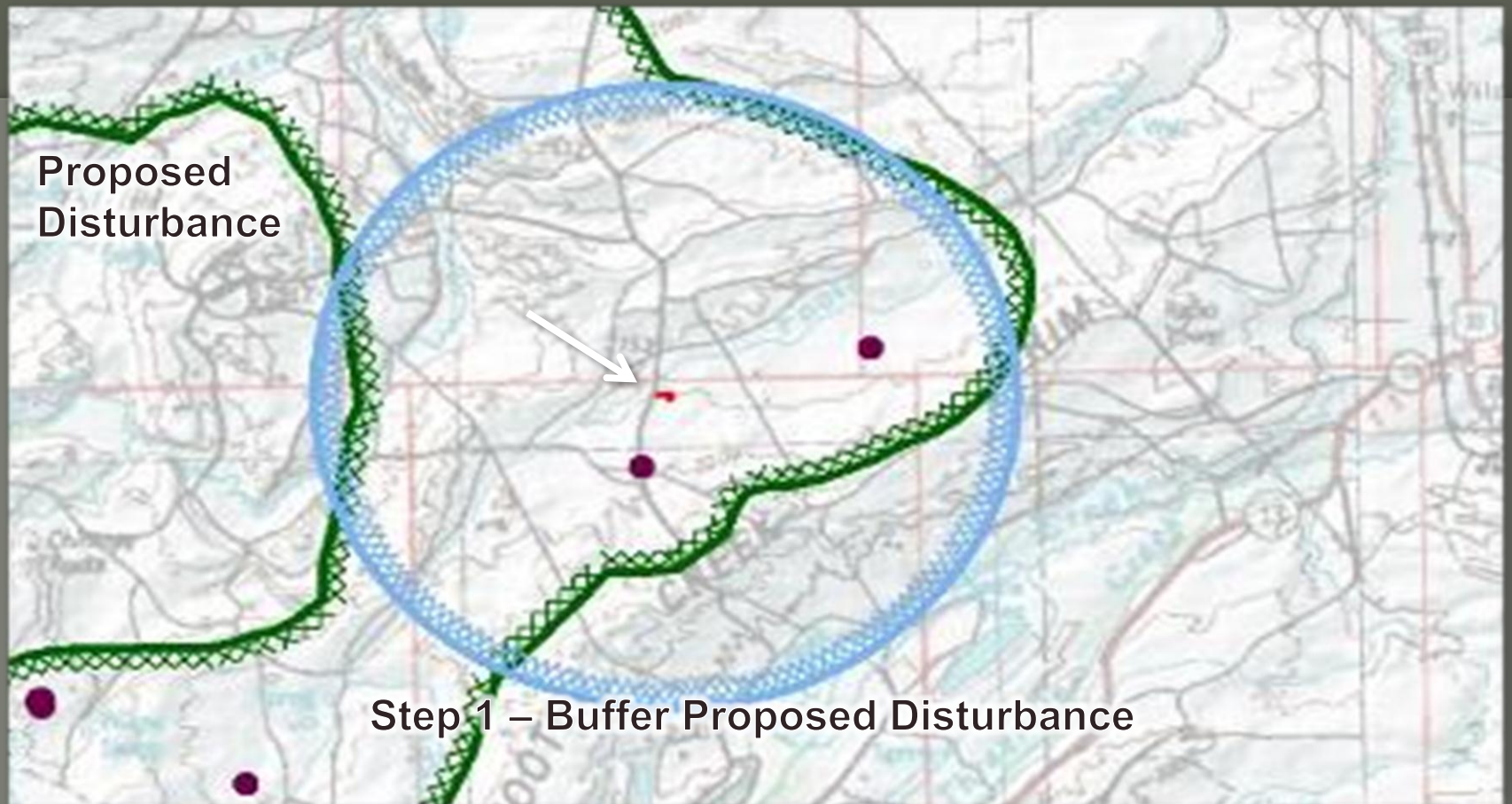


Core Area Stipulations

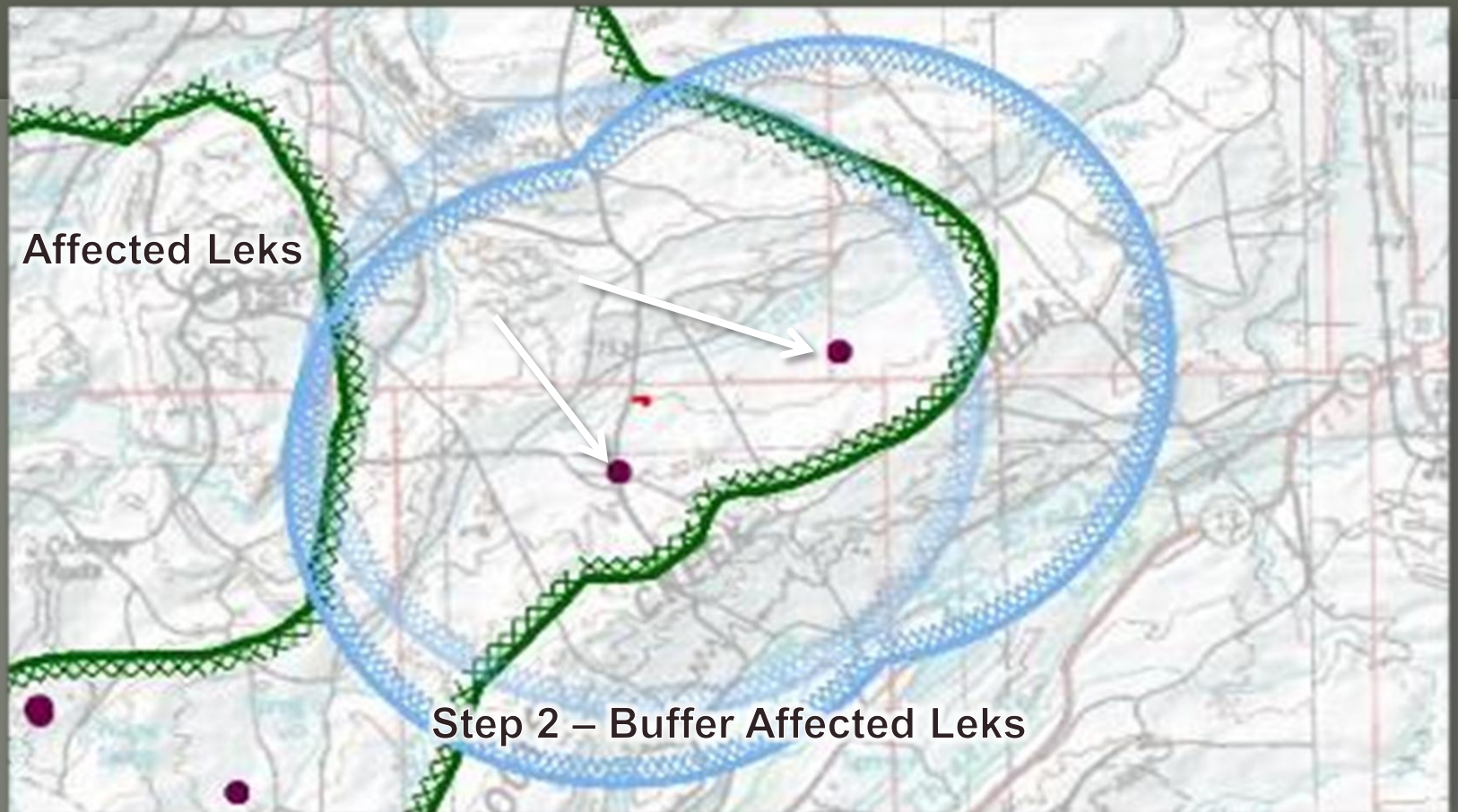
- 0.6 mile of leks “No Surface Occupancy” (NSO)
- Seasonal restriction, March 15 – June 30
- 1 well pad per 640 acres – an average across DDCT analysis area
- No more than 5% total surface disturbance per 640 – same as above



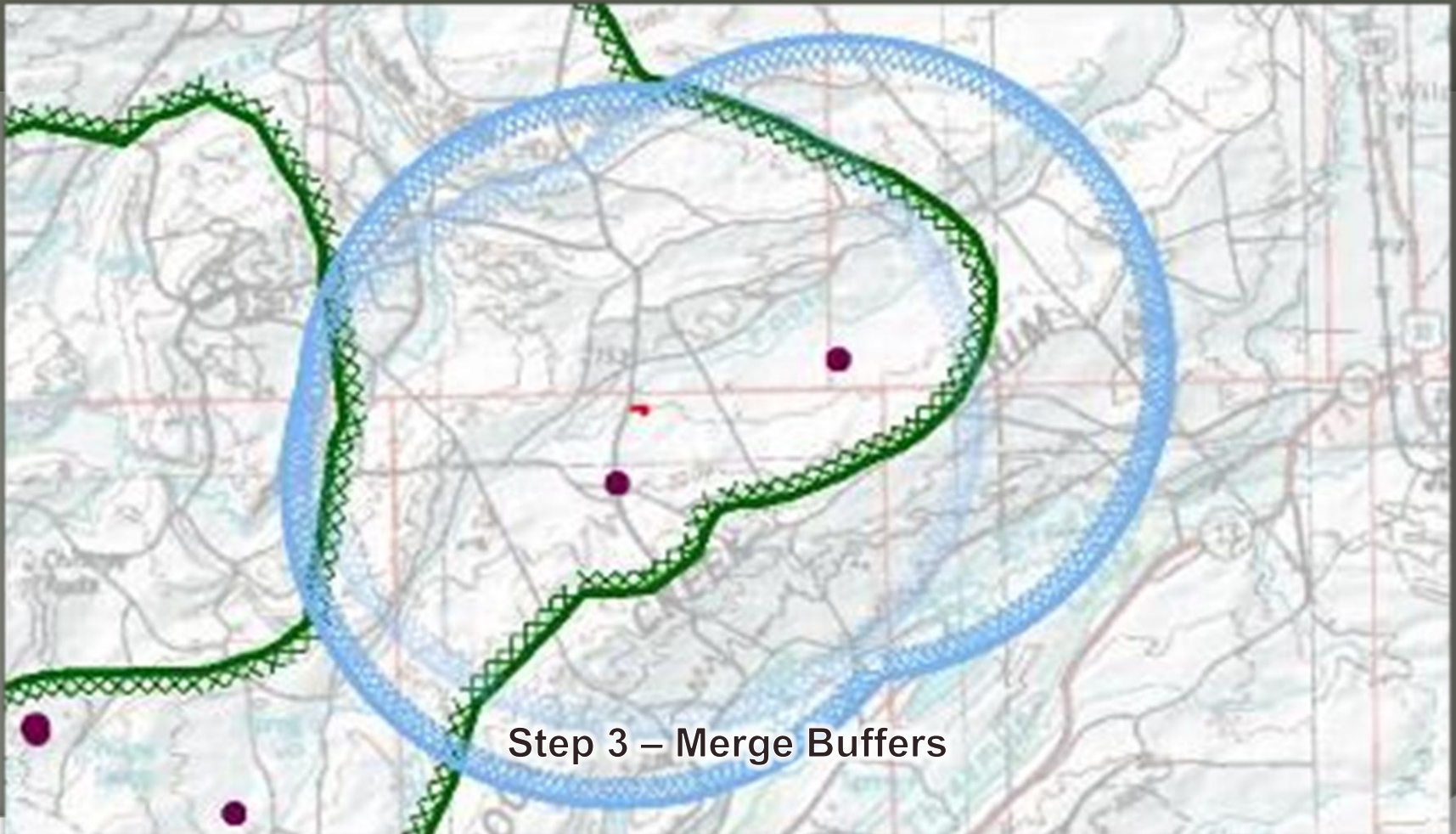
DDCT



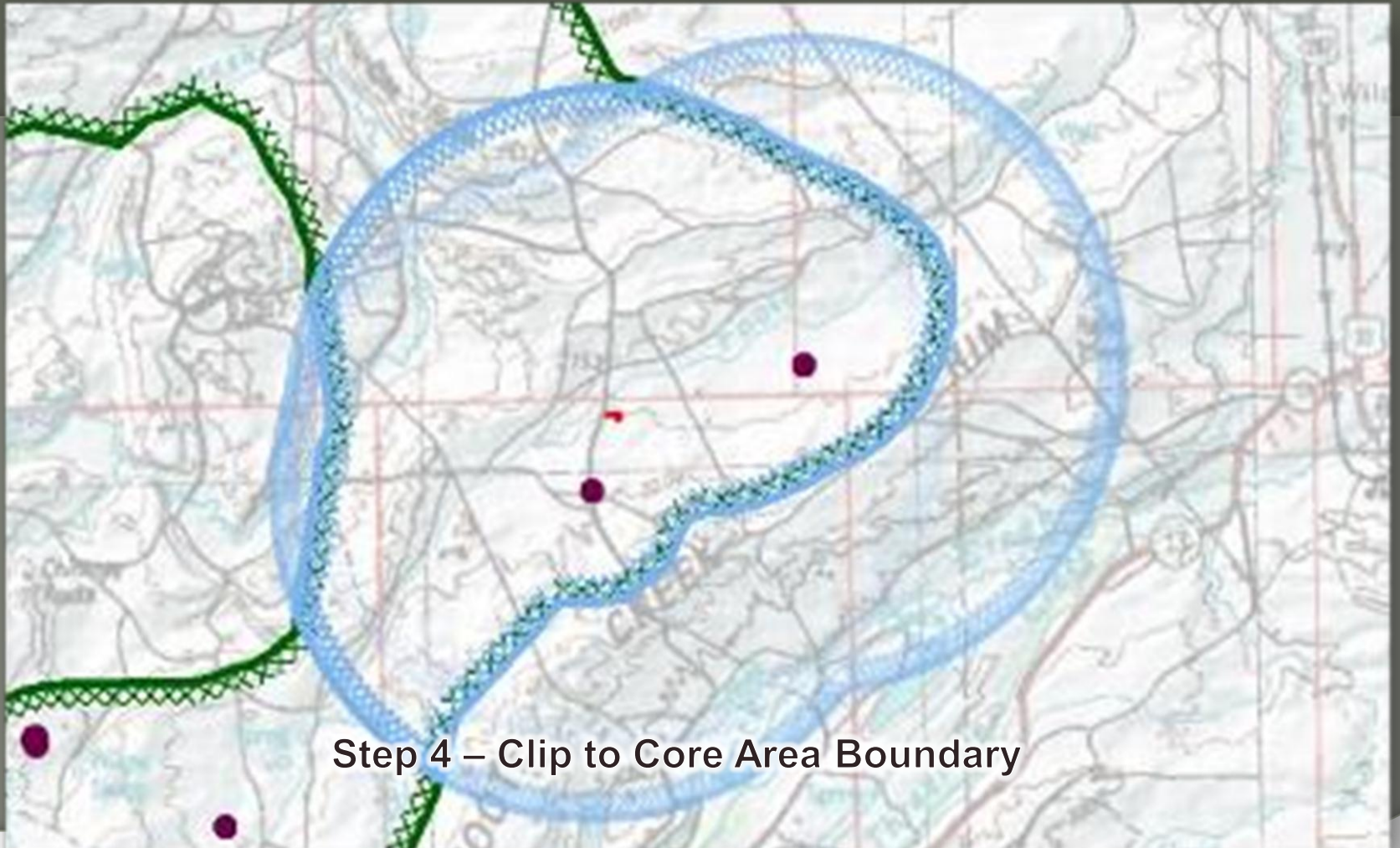
DDCT



DDCT



DDCT



Step 4 - Clip to Core Area Boundary

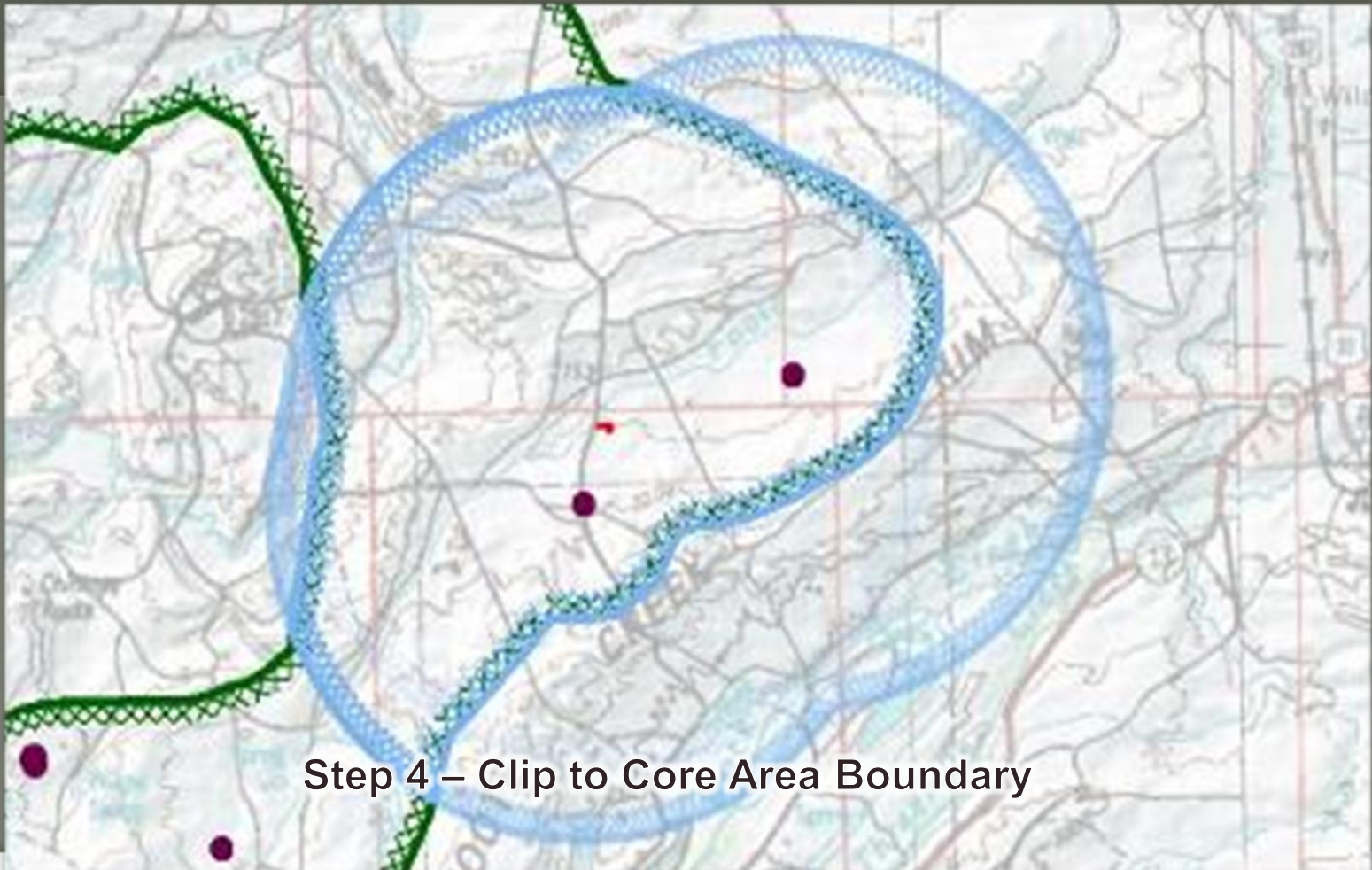
Restoration- SGE0 Priorities



On-Site



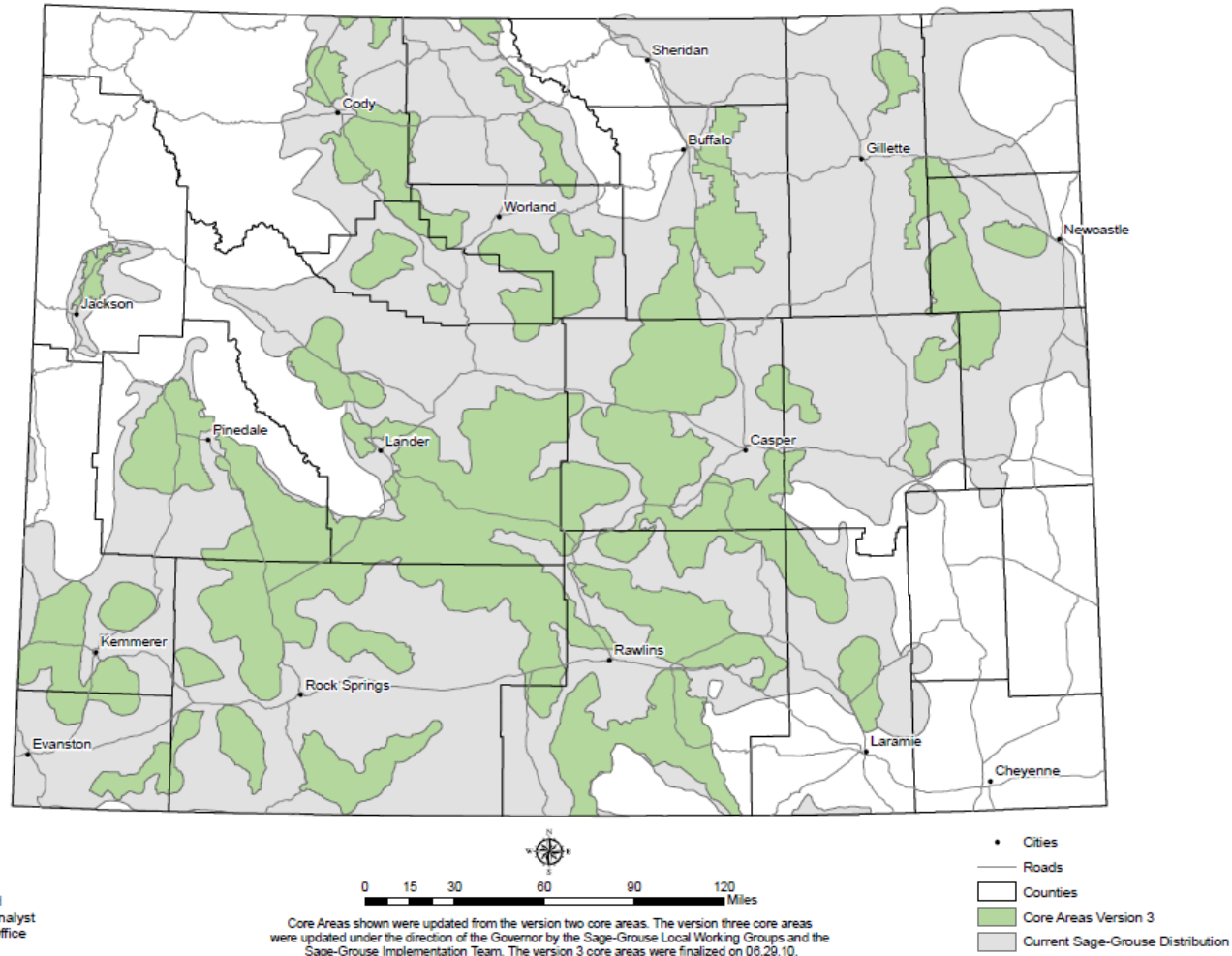
Within DDCT Area



Step 4 – Clip to Core Area Boundary

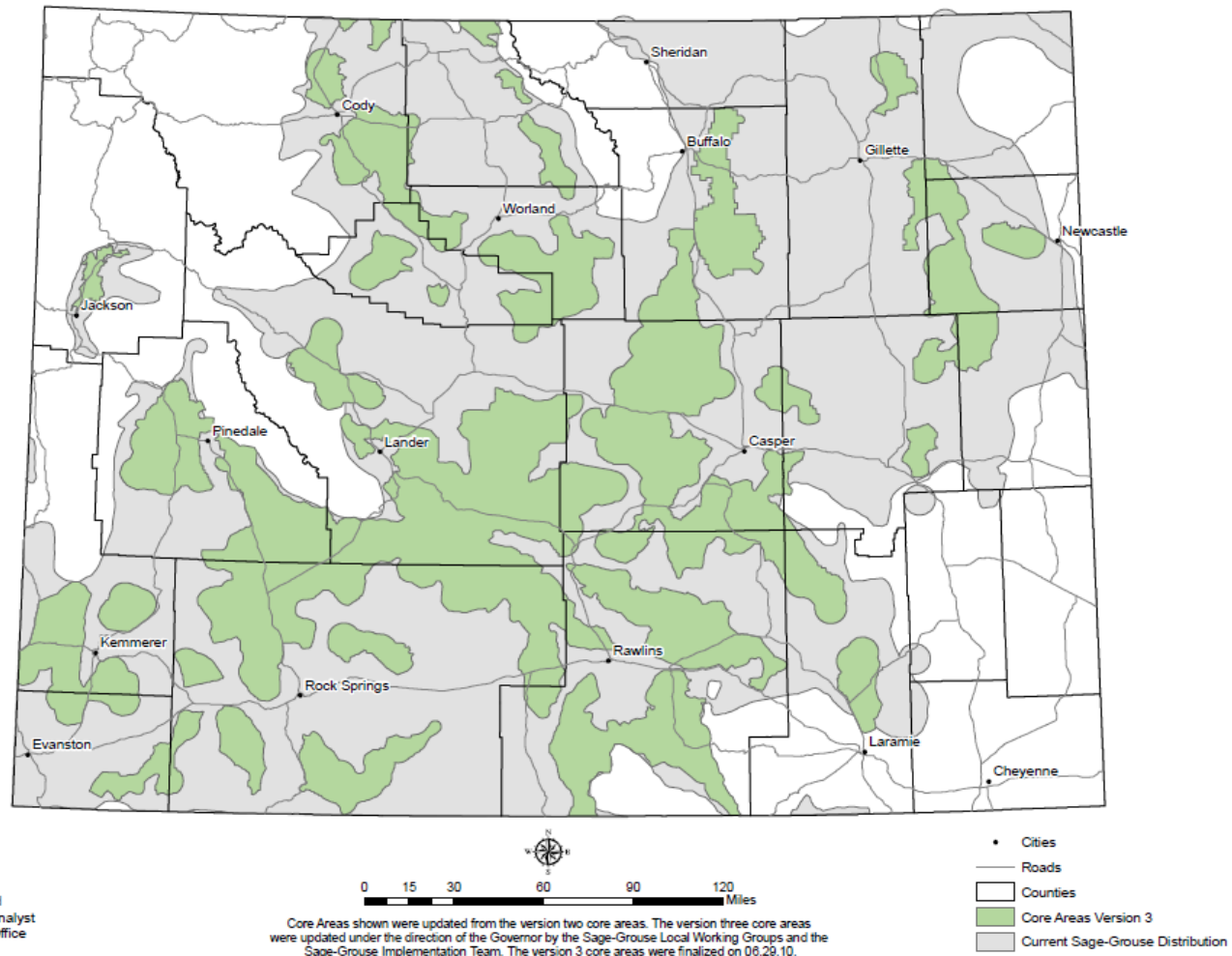
Within affected Core Area

Sage-Grouse Core Management Areas Version 3



Adjacent to Core Area

Sage-Grouse Core Management Areas Version 3



Summary

- Conservation of sage-grouse- *it's a big deal*
- Apply stipulations; seasonal timing and distance
- Determine 1/640 and 5% rules; SGEO compliance
- Restoration activity to meet SGEO

Questions?

