

Potholes

Numerical Rating	Verbal Rating	Description
9	Very Good/ Excellent	No or negligible potholes or other isolated depressions in the roadway that cause a rough ride.
8	Good	Some small potholes and surface roughness, most less than 1" deep and less than 1' in diameter; Minor impact on ride quality; Negligible impact on safety or vehicle speeds.
7		
6	Fair	Considerable potholes; Up to 3" deep though most less than 2" deep; Generally less than 2' in diameter; Significant impact on ride quality and vehicle speeds; Moderate safety risk, both as drivers dodge potholes and as they cause the driver to momentarily lose control of the vehicle; Much of the driver's focus may be on avoiding potholes.
5		
4	Poor	Many potholes, some up to 4" deep and 3' in diameter; Major impact on ride quality and vehicle speeds; Safety risks are reduced as drivers are forced to greatly reduce speed to avoid the potholes, though the occasional imprudent driver may endanger other vehicles as they dodge potholes; Avoiding potholes is a constant driver task.
3		
2	Very Poor	Potholes up to 8" deep and over 4' in diameter; Passenger cars must avoid the worst potholes or risk becoming high-centered; Ride quality and vehicle speeds drastically reduced.
1	Failed	Impassable to most passenger cars; Jeep trail.

2 Very Poor



Potholes



3 Poor



3 Poor

Potholes



4 Poor



4 Poor

Potholes

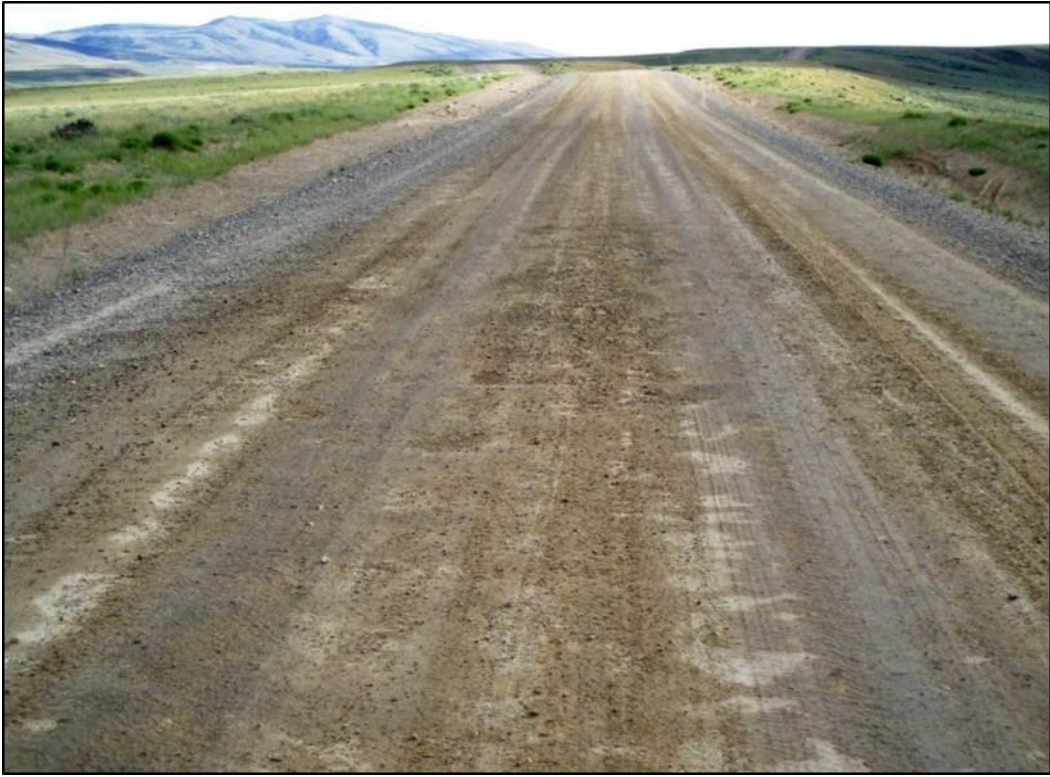


4 Poor



4 Poor

Potholes



5 Fair



5 Fair

Potholes



5 Fair



5 Fair

Potholes



6 Fair



6 Fair

Potholes



6 Fair

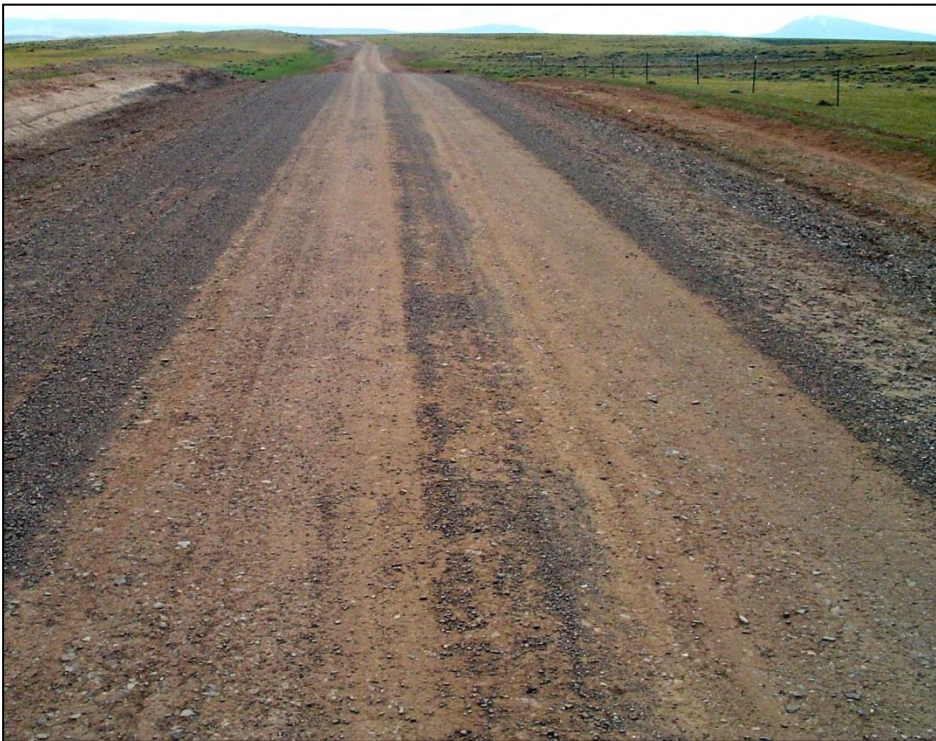


7 Good

Potholes



7 Good



8 Good

Potholes



8 Good



8 Good