



# Undergraduate RESEARCH OPPORTUNITIES & SCHOLARSHIPS



# WYOMING NASA SPACE GRANT CONSORTIUM



Wyoming NASA Space Grant Consortium (WSGC) awards fellowships to undergraduate students attending the University of Wyoming and Wyoming community colleges. Women and students from underrepresented groups are encouraged to apply.

## UNDERGRADUATE RESEARCH FELLOWSHIPS (\$5,000):

Applications for these grants are typically due early in the spring semester around February. The objective of these grants is to provide students with a positive and rewarding research experience. Research projects can be conducted in the academic year, summer, or both. Funding is used towards hourly wages at \$10.00 per hour while performing research. To apply, go to the Wyoming NASA Space Grant Consortium website for the eligibility requirements and full application details.

## NASA CENTER STUDENT SUMMER INTERNSHIPS (\$6,500):

NASA internships provide students with the chance to get hands-on experience and work with scientists, aeronautics, space science, and engineering personnel at NASA centers. The application deadlines are usually in the spring semester for 10 week summer internships. Visit the Wyoming NASA Space Grant Consortium website for the eligibility requirements and full application details.

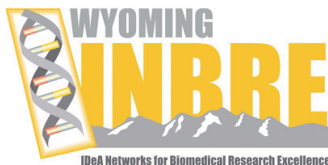
## TRAVEL GRANTS (\$250):

NASA also offers travel grants for students looking for financial support to travel to scientific conferences within the United States. Applications are accepted throughout the year and are typically for \$250 of support.

**WEBSITE:** <http://wyomingspacegrant.uwyo.edu/>



## WYOMING IDEA NETWORKS FOR BIOMEDICAL RESEARCH EXCELLENCE (INBRE)



The Idea Network for Biomedical Research Excellence (INBRE) program is funded by the National Institute of Health (NIH). Every Spring, Summer and Fall semesters, the Wyoming INBRE program puts out a Request For Applications (RFA) for an INBRE undergraduate fellowship to UW undergraduate students who are rising sophomores, juniors, and seniors wishing to engage in biomedical research. Each semester, the INBRE program offers up to 10 Undergraduate fellowships. Fall and spring fellowships are \$800 (80 hours at \$10/hour expected), and summer fellowships are \$4,500 (all hours must be completed during the award period). INBRE undergraduate fellowship applicants must all submit *research proposals that deal exclusively with biomedically related questions and experimental research that seek to improve human health*. Students receiving fellowships are expected to conduct the proposed independent study project, write a research paper describing the project and results, and present results of their work at Wyoming Undergraduate Research Day and attend INBRE sponsored events and conferences.

Visit the INBRE website for application deadlines, details, and eligibility requirements.

**WEBSITE:** <http://www.uwyo.edu/wyominginbre/fellowships-programs/>

---

## WYOMING MCNAIR SCHOLARS PROGRAM



The UW McNair Scholars Program, initiated by the U.S. Congress, is funded by the U.S. Department of Education. The Ronald E. McNair Post-Baccalaureate Achievement Program is part of the Federal TRIO Programs.



The McNair Scholars Program helps prepare undergraduate students from groups traditionally underrepresented in graduate education for success in doctoral degree programs. These include students who are first generation and from limited-income families and students who belong to ethnic minority groups underrepresented in graduate education.

UW's McNair Scholars Program encourages undergraduate students to pursue graduate studies by providing opportunities to define goals, engage in guided research, and develop the skills and student/faculty mentor relationships critical to success at the doctoral level. Twelve to sixteen new McNair Scholars are selected each year to participate in both academic year and summer activities.

Visit the University of Wyoming McNair Scholars website for information on how to apply ([www.uwyo.edu/seo/mcnair-scholars-program](http://www.uwyo.edu/seo/mcnair-scholars-program)). If you are currently engaged in a paid or unpaid undergraduate research project, you may also participate in the McNair Scholar Program at the same time. Scholarships usually include a summer research stipend and travel funding for graduate school interviews and to attend conferences in your academic area.

**WEBSITE:** <http://www.uwyo.edu/seo/mcnair-scholars-program>

---

## COLLEGE OF ARTS AND SCIENCES SCHOLARSHIPS

If you are a student within the College of Arts and Sciences, there are numerous scholarships you may be eligible to apply for! Visit the University of Wyoming College of Arts and Sciences website and scroll down to click on scholarships and grants. There you will find general scholarships, study abroad scholarships, and summer independent-study opportunities. Each scholarship or grant has their own information on how to apply, eligibility, and the scholarship amount. There are many opportunities listed on these sites and we highly encourage you to check them out and apply.

**WEBSITE:** <http://www.uwyo.edu/as/scholarships-grants/index.html>



## WYOMING RESEARCH SCHOLARS PROGRAM



The Wyoming Research Scholars Program is a part of the university-wide University of Wyoming Science Initiative program that pairs undergraduate students with faculty mentors to participate in cutting-edge research starting as early as their freshman year. The majority of practicing scientists, as well as corporate and civic leaders, credit an early research opportunity in college as having a profound effect on affirming their career path and on their personal growth. Research internships demonstrably build confidence and competence in young scholars at a formative stage in their training.

The funding awarded to Research Scholars is intended to be used for student salary pay (\$10.00 per hour), research support, such as laboratory supplies, and funding to travel to meetings and conferences.

The Wyoming Research Scholars Program has open application periods in the spring and early summer. Generally, students completing their freshman, sophomore, or junior years of study at the University of Wyoming will be able to apply in the spring for the following year. Incoming transfer students will also be able to apply in the spring, and incoming freshman students will be able to apply in the early summer.

**WEBSITE:** <http://www.uwyo.edu/wrsp/>

---

## THE HAUB SCHOOL SCHOLARSHIPS AND GRANTS

Through generous donations from supporters of the Ruckelshaus Institute and the Haub School of Environment and Natural Resources, there are several scholarships for Haub School and other students on campus interested in environmental and natural resources issues.



The Erivan Haub Scholarship supports students who participate in the annual Yellowstone Field Course (YFC). Each year, one or two upper-division undergraduate students are admitted to the YFC to spend 30 days in Yellowstone National Park exploring the ecological, cultural, and geological dimensions of the region. Applications are typically due in February.

The Haub Student Research and Creative Activities Grant is offered three times each year and is available to undergraduate and graduate students to support student research or creative activities related to the environment or natural resources. The applications are typically due in **November, February, and May** annually.

The Vern Bressler Scholarship supports education and research at the University of Wyoming in the area of fisheries biology and management. Check online for application details.

The Haub School also offers various external scholarships as well! Be sure to check out all these opportunities on the Haub School website under academic programs.

**WEBSITE:** <http://www.uwyo.edu/haub/academics/scholarships/>

---

## SCHOOL OF ENERGY RESOURCES



School of  
Energy Resources

Scholarships for the School of Energy Resources are available to new, first-time students declared in the Energy Resource Management and Development program. There are numerous scholarships on the University of Wyoming School of Energy Resources website.

The Nielson Energy Scholarships are designed to promote recruitment and retention of highly talented students planning a career in the Energy sector. These awards are possible through a generous donation by the Nielson family of Cody, Wyoming to the School of Energy Resources. Students must be declared in the Energy Resource Management and Development program.



The Nielson Excellence Fellowship in Energy Studies provides funding to encourage and assist students considering or beginning an energy-related research project.

**WEBSITE:** <http://www.uwyo.edu/ser/academic-programs/scholarships/>

---

## RECOGNIZED STUDENT ORGANIZATIONS (RSO)



Getting involved in a recognized student organization can open doors to meet more students and faculty and get involved in research and other science related activities on campus. There are many organizations that are dedicated to STEM fields such as the pre-medical club, pre-veterinarian club, pre-dental club, American chemical society of student affiliates, and much more! Go to the University of Wyoming RSO website to find all the organizations on campus and sign-up.

**WEBSITE:** <http://www.uwyo.edu/union/cac/rso/>

---

## WOMEN IN MATH, SCIENCE AND ENGINEERING (WIMSE)



The WiMSE program is a great way to meet other STEM students on campus. Each semester, through lunch seminars and the WiMSE RSO, WiMSE provides a forum for UW women in STEM to come together, share experiences, and grow both personally and professionally. WiMSE's mission is to provide support and resources for women in the UW STEM community including: professional development seminars, networking, a support system, career exploration, female role models, information



about funding opportunities, and more. Check out everything they have to offer on the WiMSE Facebook page: <https://www.facebook.com/uwyowimse2017/>.

**WEBSITE:** <https://www.facebook.com/uwyowimse2017/>

---

## COLORADO-WYOMING LOUIS STOKES ALLIANCE FOR MINORITY PARTICIPATION (CO-WY-AMP)



The CO-WY-AMP Grant is sponsored by the National Science Foundation (NSF) in hopes of including more minority students in STEM fields. This grant is a consortium of sixteen institutions of higher learning, two Native American tribes in Colorado (Southern Ute and Ute Mountain Ute), and two tribes in Wyoming (Northern Arapahoe and Eastern Shoshone). Their mission is to increase the number of historically and currently underrepresented minority (African American, Hispanic, Native American, Pacific Islander and Alaskan Native) students earning bachelor's degrees in STEM fields.

This grant allows student who qualify, to get paid hourly to work in a STEM research laboratory on campus. They will help pair you with a faculty mentor conducting research in your field of interest who needs your help and they are sure to only pair students with researches that have a history of quality mentorship and value your personal growth and learning. This opportunity allows students the necessary experience and opportunity to make their applications for graduate and professional schools more competitive. Also, if you are already working in a laboratory, you can still apply and get paid! For more information and to see if you qualify, email the grant coordinator Paige Dingess ([pdingess@uwo.edu](mailto:pdingess@uwo.edu)).





# NATIONAL OPPORTUNITIES

## NSF REU PROGRAM (RESEARCH EXPERIENCE FOR UNDERGRADUATES)

### Applications due:

- Mid February
- Consist of letters of recommendation, personal essay, resume, and transcripts

### Link to search for REUs:

- [https://www.nsf.gov/crssprgm/reu/reu\\_search.jsp](https://www.nsf.gov/crssprgm/reu/reu_search.jsp)

### Typical Pay:

- Travel, housing covered
- Stipend for food
- Additional stipend between \$4000-\$6000
- Usual length: 10 weeks of summer

What institutions look for in candidates: someone with a 4.0 GPA, from a small college, no research experience, professing an unquenchable desire to attend grad school, with stellar letters of recommendation

## NASA INTERNSHIPS AND FELLOWSHIP

NASA Internships are complete awards to support educational opportunities that provide unique NASA-related research and operational experience for students. These opportunities serve students by integrating interns with career NASA professionals emphasizing mentor-directed, degree-related tasks, while contributing to the operation of a NASA Center or Mission.

### Summer Internship Applications due:

- March 1

### Link for application and information:

- <https://intern.nasa.gov/>

### Typical Pay:

- Travel, housing covered
- Stipend for food
- Additional stipend between \$4000-\$6000
- Usual length: 10 weeks of summer



## NIH STUDENT PROGRAMS (NATIONAL INSTITUTES OF HEALTH)

- <https://www.training.nih.gov/programs>
- <http://grants.nih.gov/training/extramural.htm>
- <http://www.cc.nih.gov/training/>
- <http://grants.nih.gov/training/nrsa.htm>

---

## ADDITIONAL ADVICE

### 1.) CONTACT YOUR ADVISOR.

Occasionally, advisors are aware of certain laboratories on campus that are open and in need of undergraduate students to help out with research.

### 2.) TALK WITH YOUR CURRENT OR FAVORITE PROFESSORS ON CAMPUS.

Just talking with one of your professors can open doors into research in their particular laboratory or open the door for them to give you advice about certain research laboratories on campus that are looking for undergraduates to help out.

### 3.) EMAIL YOUR DEPARTMENT OR THE DEPARTMENT YOU ARE INTERESTED IN RESEARCHING.

See if any faculty are in need of undergraduate researchers.

### 4.) TALK TO THE TAs FOR YOUR COURSES.

Most of the time, it is the graduate students who are looking for research aid with their projects and would be happy to have an interested undergraduate help them out. Don't be afraid to ask your TAs if there are opportunities in their laboratories or others on campus.

### 5.) GENERALLY, BEGIN BY ASKING FOR VOLUNTEER POSITIONS IN THESE RESEARCH LABORATORIES.

Then, as you get acquainted with the research going on, you can apply for one of the other grants listed in this booklet! Additionally, working in a research lab one-on-one with a faculty member provides the opportunity for great letters of recommendation for any next steps you might be considering such as job opportunities, graduate school, medical school, or other professional schools.



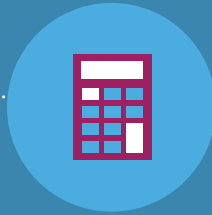
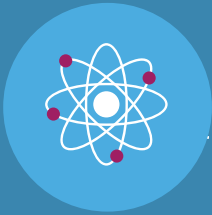
## 6.) CHECK OUT THE UW WEBSITE AND DEPARTMENT WEBSITES.

The University of Wyoming is a major research university. Each department lists the faculty members in their department and most faculty members have a webpage for their research group. You can check out what types of research different faculty members are doing and contact professors based on your interests to talk more about potential opportunities to get involved.

## 7.) GET INVOLVED.

There are many ways to get involved while in college – direct research experience in labs, through RSOs, through groups like WiMSE. Each of these opportunities helps you gain knowledge, skills, networking, and is something that can be put on a resume! It's never too early or too late to get involved!





*Undergraduate*  
**RESEARCH  
OPPORTUNITIES &  
SCHOLARSHIPS**