

2024 -2025

# STATEWIDE COMMUNITY ENGAGEMENT REPORT



Office of Community Engagement

Dear friends, colleagues, and partners,

As Wyoming's only public four-year, land-grant university, the University of Wyoming carries a clear responsibility: to serve the people, communities, and industries of our state. Community engagement is how we fulfill that mission.

Across all 23 counties and the Wind River Reservation, UW faculty, staff, students, and partners collaborate to advance solutions grounded in local knowledge. From rural and frontier communities to our tribal nations, our work reflects a shared commitment to Wyoming's strength and future.

This year, UW expanded its statewide impact in meaningful ways:

- **Students** enhanced their learning through service, internships, community-based research, and volunteerism that prepare them to lead in Wyoming's workforce.
- **Faculty and staff** advanced engaged scholarship addressing critical priorities, including rural health, energy, agriculture, education pathways, and economic diversification.
- **Extension and outreach** ensured research-based resources remain accessible and responsive in every county.

As a land-grant institution, we are committed to engagement that is coordinated, strategic, and accountable — measured not only by participation, but by outcomes. The Office of Community Engagement strengthens this work by aligning efforts across campus to amplify statewide impact.

Engagement at UW means listening first, building trust, and co-creating solutions that honor local expertise. It ensures the University remains a present, responsive partner to the people of Wyoming.

This report highlights our progress and partnerships — and reaffirms a simple promise: the University of Wyoming belongs to this state, and our work must advance opportunity, resilience, and prosperity for all Wyoming communities.

Together, we are not simply serving Wyoming. We are building its future.

In partnership,



A handwritten signature in black ink that reads "Erin Olsen".

Dr. Erin Olsen, Director  
Office of Community Engagement

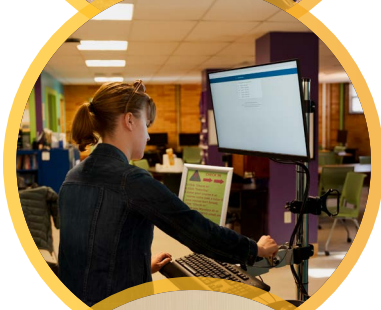


# THE UW OFFICE OF COMMUNITY ENGAGEMENT MISSION

Advance the University of Wyoming's land-grant mission of community engagement within the state of Wyoming. We further this mission in the following ways:



**COLLABORATION:**  
Facilitate collaborative efforts between UW and Wyoming stakeholders to address complex community challenges through shared resources and knowledge.



**DATA COLLECTION:**  
Serve as a hub for data collection and communications about institutional statewide community engagement efforts.



**ASSESSMENT:**  
Expand institutional capacity to assess needs, impact, and strategic direction of institutional-community partnerships.



**LEADERSHIP:**  
Identify and recommend institutional resources, policies, and processes that support community-engaged research, education, and service.

## ABOUT THIS REPORT



Since establishment in 1886, the University of Wyoming has pursued its land-grant responsibility to engage with and serve the state.

Every year, UW and statewide communities work together to address complex challenges and create new opportunities to improve life in Wyoming. The university is involved in projects and partnerships in every county and the Wind River Reservation.

This report serves to highlight and celebrate examples of the wide range of connections between UW and Wyoming communities in the past year.



# COMMUNITY ENGAGED FACULTY INSTITUTE

In spring 2024, eleven faculty members from the University of Wyoming (UW) completed the second annual Community Engaged Faculty Institute (CEFI) program. The institute provides faculty with professional development to integrate community engagement and service learning into curriculum.

Rachel Watson, Director of the Learning Actively Mentoring Program (LAMP), served as lead designer and facilitator of the program experience this year. “Across eight immersive sessions, faculty fellows developed curriculum in which student outcomes determined the high-impact service-learning, problem-based, experiential and transformative pedagogies that faculty adopted. Simultaneously, the fellows became a community and realized that they are not alone in their pursuit of teaching strategies that truly enable students to immerse in authentic learning landscapes.” said Watson.

The 2024-25 CEFI cohort was comprised of faculty from a wide range of disciplines and units:

- Michelle Blakely, School of Pharmacy, College of Health Sciences
- Christine Boggs, Ellbogen Center for Teaching and Learning
- Karagh Brummond, Science Initiative, and Honors College
- Conxita Domènech, Modern and Classical Languages, College of Arts and Sciences
- Grete Gansauer, Haub School of Environment and Natural Resources
- Thomas Grant, Honors College
- Paddington Hodza, Wyoming Geographic Information Science Center (WyGIS), School of Computing
- Katelyn Kotlarek, Division of Communication Disorders, College of Health Sciences
- Alison Mercier, School of Teacher Education, College of Education
- Diksha Shukla, Electrical Engineering and Computer Science, College of Engineering and Physical Sciences
- Anne Stevens, Psychology, College of Arts and Sciences

CEFI was developed to support strategic institutional goals of pursuing excellence in teaching, student success, and community engagement. This year, the institute was administered by the Office of Community Engagement, with support from the Office of Academic Affairs; Science Initiative Learning Actively Mentoring Program (LAMP); Service, Leadership, and Community Engagement (SLCE); Ellbogen Center for Teaching and Learning (ECTL); and the Wallop Civic Engagement Program and Stewart Family Enrichment Fund within the School of Politics, Public Affairs & International Studies (SPPAIS).

“I highly recommend the CEFI to anyone curious about bridging classroom learning and real-world applications, developing effective solutions for complex community issues.”

— Paddington Hodza

“The CEFI experience was not only timely for my AY25-26 course prep but also provided fantastic resources and a support network to ensure this offering will be successful. I would highly recommend this institute to anyone thinking about integrating service learning into their course or degree program.”

—Katelyn Kotlarek





# COLLEGE AND SCHOOL HIGHLIGHTS

As Wyoming's land-grant and flagship institution of higher education, UW is committed to meaningful engagement and outreach with communities across the state. UW's academic colleges and schools collectively extend the university's impact through education, scholarship, innovation, and service – strengthening connections between UW and statewide communities. The following highlights – select examples from each college or school – demonstrate the many ways UW's academic units partner with and serve the people of Wyoming.



# COLLEGE OF AGRICULTURE, LIFE SCIENCES, AND NATURAL RESOURCES



## INSTITUTE FOR MANAGING INVASIVE ANNUAL GRASSES IN WYOMING (IMAGINE)

Invasive annual grasses (IAGs) are among the greatest threats to rangelands of Wyoming and the West. IAGs displace native vegetation, reduce grazing productivity, increase wildfire risk, and degrade wildlife habitat. IMAGINE uses coproduced science, outreach, and education programs to develop, implement, evaluate, and adjust statewide and regional strategies for mitigating impacts of IAGs in rangelands. The institute is widely collaborative – working in cooperation with state, federal, and local partners – with a focus on empowering informed decision making by landowners and managers. IMAGINE efforts to expand statewide capacity for long-term, landscape-scale management of western rangelands strengthen Wyoming’s communities and agricultural economy.

In 2024, IMAGINE engaged with 2,500 individuals across 17 Wyoming counties; produced 46 Extension events, 14 scientific presentations, six publications; and hosted a virtual workshop drawing 522 participants from 20 states and Canada.

## GROWING INTERNSHIP PROGRAM

The GrowinG Internship program offers UW students hands-on experience in production agriculture through 10-week summer placements on family farms and ranches in Wyoming. Funding from a USDA grant has covered intern stipends while hosts provide housing. Since 2022, 38 interns have completed internships, including 10 in 2025. Interns have been placed across 12 counties – Albany, Big Horn, Campbell, Converse, Fremont, Goshen, Laramie, Sheridan, Sublette, Sweetwater, Teton, and Washakie – strengthening connections between UW and local agricultural producers.

GrowinG Internship Program website includes an intern blog (“Intern-Tales”), videos, and other dynamic content — [https://growing-wy.org/post/intern\\_tales/](https://growing-wy.org/post/intern_tales/)

## RURAL NUTRITION AND WELLNESS

Integrating research, teaching, and community engagement to improve rural lives is at the heart of the Family and Consumer Science Department. Dr. Grace Shearrer’s approach exemplifies this connection with nutrition and wellness. Collaborative work with UW Extension and the

Wyoming Department of Agriculture has increased accessibility of mental health and stress counseling for the state's agricultural workforce. Additionally, Dr. Shearrer's lab supports local early childhood health through a partnership with Laramie's Head Start program. UW students conduct height and weight assessments for Head Start preschool children to ensure children are growing-up healthy, while providing real-world training for UW students. Community-connected research of digital health tools with Central Wyoming College also provides a pathway for community college students to gain experience in research and increase confidence enrolling at UW. Dr. Shearrer's coordination with community organizations, Wyoming community colleges, and other campus units helps strengthen research and service aligned with the university's land-grant mission.

The College of Agriculture, Life Sciences, and Natural Resources also advances UW's land-grant mission of outreach, education, and applied research to serve Wyoming through a statewide network of county Extension offices and research and extension centers. Following are highlights from UW Extension and the Wyoming Agricultural Experiment Station centers.



### UW EXTENSION

Established in 1914, UW Extension (UWE) serves all 23 counties and the Wind River Reservation, delivering research-based educational programs that support Wyoming residents of all ages. Local Extension educators who live and work across the state help build community capacity through programming in agriculture, youth and family development, business, health, and leadership.

In 2024-25, **UW Extension delivered 4,811 educational programs, with 11,457 instructional hours and 126,952 total educational contacts.**

Additionally, more than 13,000 youth participated in 4-H programs, developing leadership, science, agriculture, and citizenship skills through hands-on activities.

## GEODOME WORKSHOPS FOR GROWING SEASON EXTENSION

In response to Wyoming’s harsh climate and short growing season, UWE delivered eight geodesic dome workshops in 2024 in five counties -- Albany, Fremont, Laramie, Park, and Platte – and the Wind River Reservation. Through the workshops, 83 participants were trained in dome construction and utilization to expand agricultural productivity. The initiative strengthens local food security, expands crop diversity, and supports sustainable, economically viable agriculture statewide.

## WYOMING WALKS

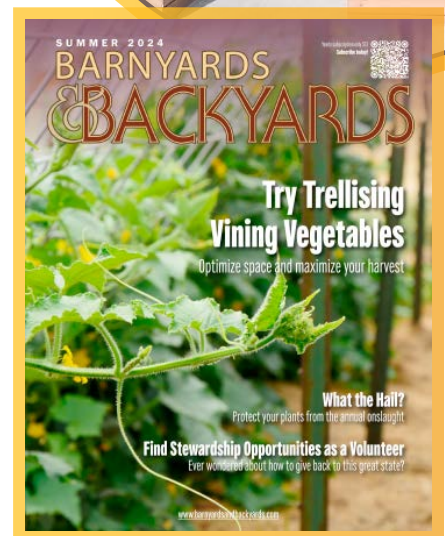
In response to high rates of inactivity Wyoming adults reported in the 2022–2024 Community Health Needs Assessment, UWE started the Wyoming Walks program to promote health, learning, and community connection. In the past year, the program engaged 1,145 participants across seven counties, covering 175 miles in 29 walks. Each walk offers an opportunity to explore unique features of community, including landmarks, cultural spots, businesses, and scenic areas. Expert volunteers helped incorporate lectures, discussions, and hands-on activities. Participant feedback reflected program success in improving physical activity, learning, and mental well-being.

## BARNYARDS AND BACKYARDS

As Wyoming experiences continued conversion of large agricultural lands into small acreage parcels, many new rural landowners seek practical guidance on land stewardship. Since its launch in 2005, Barnyards & Backyards has addressed this need through expert-written, accessible articles on topics ranging from soil health to animal husbandry. In 2024, 10,053 copies featuring 38 articles were distributed, with contributions from 26 authors across 10 agencies. Approaching its 20-year anniversary, the magazine remains a trusted statewide resource for relevant and practical information about small acreage management.

## SOUTHEAST WYOMING BEEF SYMPOSIUM

Beef production remains central to Wyoming’s agricultural economy, supporting jobs, local businesses, open spaces, ecosystem services, and food production. To advance profitable and sustainable operations, UW Extension convened the 2024 Southeast Wyoming Beef Symposium, providing beef producers with research-based insights on emerging industry challenges and opportunities. The event drew 117 participants from three states, with attendees collectively managing nearly 25,000 head of cattle. Supported by 15 sponsors, the symposium strengthened industry collaboration, informed decision-making, and the long-term resilience of Wyoming’s beef sector.



# THE WYOMING AGRICULTURAL EXPERIMENT STATION (WAES)

The Wyoming Agricultural Experiment Station (WAES) is the research unit of UW's College of Agriculture, Life Sciences and Natural Resources. WAES conducts fundamental and applied research related to agricultural production, natural resource stewardship, economic development and community well-being. Founded in 1891, WAES remains committed to addressing the current and future needs of the state, region, nation and world through rigorous scientific investigation.

In addition to supporting research on campus, WAES operates research and extension centers in Laramie, Lingle, Powell and Sheridan that serve as hubs for locally tailored research, extension demonstrations, and outreach. These centers facilitate field days, producer outreach, extension bulletins, and on-farm research that directly affect agricultural practices statewide. Here are a few examples from each center around the state:



## LARAMIE RESEARCH AND EXTENSION CENTER: HIGH-ELEVATION LIVESTOCK AND CROP SYSTEMS, EXTENSION EDUCATION

- Livestock and ruminant nutrition studies, including high-altitude pulmonary hypertension research.
- Forage production and pasture ecology research examining grazing impacts on soil carbon and biodiversity.
- Precision agriculture applications, including early drone and sensor trials to improve efficiency.
- Controlled environment agriculture (greenhouse) projects testing planting and harvesting methodologies for lettuce and other crops (e.g., cut-and-sow methods in greenhouse trials).

## **JAMES C. HAGEMAN SUSTAINABLE AGRICULTURE RESEARCH AND EXTENSION CENTER (LINGLE): INTEGRATED SYSTEM RESEARCH PROMOTING ECOLOGICAL AND ECONOMIC SUSTAINABILITY**

- Field day showcased projects that included carbon markets research, pulmonary hypertension in cattle, resilient forage systems, and wildfire and invasive grass studies.
- Breeding and agronomic trials such as dry bean breeding and forages adapted to Wyoming conditions.
- Use of drones to predict sugar beet yields and demonstrations of precision equipment including ground-penetrating radar for irrigation planning.
- Partnerships with Eastern Wyoming College for precision agriculture education and technology integration including remote sensing and variable-rate practices.

## **POWELL RESEARCH AND EXTENSION CENTER: IRRIGATED AGRICULTURE AND REGION-SPECIFIC CROP SYSTEMS**

- Annual field day research featured row crops, drought impact studies, and herbicide response trials on key grain and forage crops. This event featured graduate-student presentations and producer discussions connecting research results with local production challenges.
- Ongoing evaluation of variety performance, irrigation effects, and agronomic weed control strategies.
- Sheridan Research and Extension Center – dryland and irrigated trials, forage and horticulture research.
- Field tours highlighted invasive grass management, wildfire recovery, and pest control strategies relevant to northern Wyoming production agriculture.
- Research on alfalfa weevil management, orchard grass performance, and spring barley, soybeans, and winter peas tailored to local climate conditions.
- Precision agriculture demonstrations and technology adoption aimed at local growers and ranchers.



# COLLEGE OF ARTS AND SCIENCES



## CAMPUS CONNECTIONS SERVICE-LEARNING MENTORING PROGRAM

Campus Connections is a service-learning course offered through the Department of Psychology in which UW students mentor local youth (ages 11-18) who are at risk for behavioral and emotional difficulties. UW student mentors offer support for youth to develop friendships, build academic and life skills, and engage in pro-social activities. Clinical psychology graduate students provide integrated therapy services for youth and families if needed. The program, which began in August 2024, is offered every fall and spring semester. Program partners include the Wyoming Department of Family Services, Albany County Court Supervised Treatment Programs, Albany County School District #1, and UW Student Success and Graduation Hub.

## STATEWIDE “CHALLENGES TO DEMOCRACY” LECTURE SERIES

A “Challenges to Democracy” lecture series was hosted by the Malcom Wallop Civic Engagement Program and the School of Politics, Public Affairs, and International Studies in Fall 2024 across Wyoming, including events in Albany, Laramie, Natrona, Park, and Sheridan counties. Featuring UW faculty, international scholars, and Wyoming community members who are experts on civic engagement, the series explored threats to democracy and potential solutions to restore civility in the U.S. and globally. The free public events included lectures and discussions on polarization, voting, civic engagement and global democratic crises as well as hosted discussions in high schools in these counties.

## UW HIGH SCHOOL ART INTENSIVE

For more than two decades, the Department of Visual Arts has offered annual hands-on art intensives for Wyoming high school students. In 2024, more than 200 students representing 20 Wyoming high schools participated in two days of workshops on the UW Laramie campus. Workshops encompassed a broad range of visual arts disciplines and techniques – including drawing, painting, printmaking, ceramics, art history, photography, metalsmithing, and sculpture – were led by 18 visual arts faculty. The intensive was supported by more than 40 UW student assistants, who gained applied experience contributing to their professional development.

In 2024-25, 12 youth, 23 UW undergraduate mentors, and seven clinical psychology graduate students participated in the pilot year of the Campus Connections program.

# COLLEGE OF BUSINESS



## UW CENTER FOR BLOCKCHAIN AND DIGITAL INNOVATION (CBDI)

The CBDI is an interdisciplinary center established as a collaborative initiative between the College of Business; College of Engineering and Physical Sciences; College of Agriculture, Life Sciences and Natural Resources; College of Law; and the School of Energy Resources, and in partnership with state community colleges. Through research initiatives, industry partnerships, and outreach and educational programs, CBDI is advancing the role of digital innovation across Wyoming and beyond, preparing the next generation of leaders in blockchain and emerging technologies.

## UW LEADERSHIP ACADEMY (UWLA)

The UWLA is an immersive co-curricular program developed in partnership with Leadership Wyoming to prepare high-achieving UW students for economic and civic leadership. Launched in fall 2024, the first class of 20 undergraduates from eight academic colleges participated in hands-on leadership development experiences. Through sessions held in Laramie, Sheridan, Casper, and Lander, students explored key Wyoming industries including energy, manufacturing, and tourism; engaged with local civic and business leaders; and gained insight into the state's economic challenges and opportunities.

## “VOICES OF BUSINESS” STATEWIDE LISTENING TOUR

The College of Business partnered with the Wyoming Business Alliance “Voices of Business” statewide listening tour starting in spring 2025. College economists delivered county-specific economic forecasts, providing localized insights into challenges and opportunities Wyoming businesses face. Additionally, UW economists heard from business leaders, innovators, and partners across the state about policy, programmatic, and resource needs to support a successful economic future. Between March and May 2025, the tour visited nine counties – Laramie, Albany, Goshen, Platte, Sheridan, Johnson, Sublette, Lincoln, and Teton – with plans to reach all 23 counties by year's end.

In 2024-25, the Wyoming High School Blockchain Education Initiative – a partnership with the Wyoming Department of Education – trained 20 high school teachers on blockchain educational modules and facilitated adoption of blockchain curriculum materials into Career and Technical Education (CTE) pathways.

# COLLEGE OF EDUCATION



## BUILDING WYOMING'S EDUCATOR PIPELINE

The College of Education plays a central role in building Wyoming's educator workforce through comprehensive, statewide partnerships and sustained pre-service experiences. Each year, the College places 200-250 student teachers and more than 200 practicum students across Wyoming and outside states. The placements serve all 48 Wyoming school districts, directly supporting school capacity across the state.

Pre-service candidates begin practicum experiences in their freshman through junior years, culminating in a full semester of student teaching that prepares them for Wyoming classrooms. Nearly half of Wyoming's teachers, principals, and superintendents are College of Education graduates, reflecting a pipeline that forms the foundation of the state's educator preparation strategy.

## WYOMING RURAL TEACHER CORPS (WYRTC)

Wyoming aims to be a leader in training highly qualified educators who specialize in delivering research-based education in highly rural communities. The Wyoming Rural Teacher Corps (WyRTC) prepares pre-service teachers to thrive in rural schools through place-based coursework, rural immersion experiences, mentorship, and community engagement. The program supports high-need rural communities by addressing teacher shortages while helping Corps members build practical skills, cultural understanding, and professional confidence. Through service projects such as STEM and literacy events, participants have served more than 450 K-8 students. Since 2023, WyRTC has achieved a 100% placement rate, with nearly 90% seeking rural placements for their first teaching role and 87% of alumni accepting positions in Wyoming districts.

## CAREER & TECHNICAL EDUCATION (CTE) TEACHER PIPELINE

The Career & Technical Education (CTE) Initiative, supported by the Trustees Education Initiative (TEI), is dedicated to increasing the number of qualified CTE teachers to meet workforce demands and expand career opportunities across Wyoming. Rebuilt from producing 1-2 graduates annually to more than 30 currently in preparation, the pipeline now includes a Bachelor of Applied Science (BAS) in CTE, bridge courses for high school students, clear transfer processes for Wyoming community college students, and revised Professional Teaching Standards Board (PTSB) licensure pathways. The initiative is supported by partnerships with 26 school districts, all Wyoming community colleges and WyoTech, as well as government and industry associations. To date, the program has achieved a 100% graduate placement rate, underscoring the critical role of CTE teacher preparation in advancing the state's economic, educational, and workforce goals.

# COLLEGE OF ENGINEERING AND PHYSICAL SCIENCES



## UW GEOLOGICAL MUSEUM

The Geological Museum is a cornerstone of education, research, and community engagement at UW. Home to over 60,000 fossil specimens, including iconic Wyoming discoveries, the museum brought Earth's history to life for 16,650 visitors in 2024-25 through exhibits, guided tours, and hands-on learning experiences. Outreach events such as Wyoming Rocks and the Fossil Fish Festival, along with participation in the Wyoming State Museum's Dino Day, engage additional participants, connecting Wyoming families, K-12 and college students, and community members with earth science in fun, accessible ways. Extending its reach beyond the gallery, the museum also provides free online access to 3D models of fossils, rocks, and minerals, supporting education and discovery worldwide.

## MOBILE MAKERSPACES – EMPOWERING CREATORS, MAKERS, AND INNOVATORS ACROSS WYOMING

The Wyrkshop Mobile Makerspaces—an extension of the Innovation Wyrkshop—are a fleet of 19 fully equipped mobile labs serving communities across Wyoming. Offered at no cost, these makerspaces can remain in rural and remote areas for up to six months, expanding access to high-quality Science, Technology, Engineering, Art, and Math (STEAM) education. Each unit is packed with engaging tools that teach coding, woodshop skills, CAD modeling, and 3D printing. The mobile labs are available for free to K-12 schools, homeschooling groups, community colleges, and small business. Over the past year, the fleet visited 34 communities and engaged approximately 11,200 students through hands-on STEM days, K-12 school visits, and homeschooling programs.

## WYOMING STATE SCIENCE FAIR

The Wyoming State Science Fair (WSSF), housed in the Department of Physics and Astronomy, provides a statewide forum for 6th–12th grade students advancing from regional fairs to conduct and present original science, technology, engineering, and mathematics (STEM) research. Held annually in early March, the two-and-a-half-day event engages 100-400 students from approximately 40 schools each year. The Fair relies on about 150 volunteer judges who hold PhDs or have significant science research experience, with 85–90% from UW and representing every academic unit. Students compete for awards from local and national partners. Top high school competitor(s) advance to the Regeneron International Science and Engineering Fair, competing for nearly \$9 million in prizes and scholarships. In collaboration with local schools, community colleges, other UW units, state and federal partners, industry, and private donors, the WSSF strengthens Wyoming's pipeline of future STEM leaders.

# COLLEGE OF HEALTH SCIENCES



## TELEHEALTH SPECIAL INTEREST GROUP – COMMUNITY HEALTH & CHRONIC DISEASE PREVENTION

The Community Health and Chronic Disease Prevention Special Interest Group works to expand access to telehealth services across Wyoming. By identifying and addressing gaps in care, the group focuses on strengthening service delivery in rural and frontier communities. Efforts emphasize preventative care strategies designed to reduce avoidable emergency medical utilization and improve long-term health outcomes.

## EQUALITY STATE RESEARCH NETWORK (ESRN)

The Equality State Research Network (ESRN) is a statewide collaborative dedicated to advancing community-based research that improves the health of Wyoming residents. ESRN integrates community engagement, quality improvement, and scientific inquiry to address pressing health needs. Partners include primary care practices, child development centers, school-based providers, specialty care organizations, and other community professionals. The University of Wyoming provides the infrastructure, coordination, and research guidance necessary to develop responsive initiatives tailored to the unique needs of rural and frontier communities.

## ECHO INTEGRATIVE CARE: PRIMARY CARE AND MENTAL HEALTH

The Integrative Care ECHO Network is an online professional learning community that strengthens knowledge and implementation of integrated primary and mental health care throughout Wyoming. The network promotes collaboration, shared expertise, and practical application in communities statewide.

## HEALTHY POKES AFTERSCHOOL PROGRAM

Developed by Kelly Simonton in collaboration with partners outside UW, the Healthy Pokes Afterschool Program provides positive physical activity experiences for elementary students, emphasizing personal growth and social skill development. The program operates in schools across Laramie, Albany, Natrona, and Sheridan counties through partnerships with nonprofits and physical education teachers.

## UW ECHO FOR FAMILIES – REGIONAL SITE LEADERS

ECHO for Families is a supportive learning and advocacy community serving families of children with developmental disabilities, autism, and other special healthcare needs. Through professional guidance and peer connection, families share successes, discuss evidence-based solutions, and access mentorship opportunities across Wyoming and beyond. Counties served (2024–2025): Big Horn, Campbell, Carbon, Converse, Fremont, Hot Springs, Johnson, Laramie, Lincoln, Natrona, Park, Sheridan, Sublette, Sweetwater, Teton, and Uinta Counties.

# COLLEGE OF LAW



## LEGAL CLINICS

The College of Law provides free legal representation to individuals of limited means through five clinics: the Civil Legal Services Clinic, Defender Aid Clinic, Family & Child Legal Advocacy Clinic, Estate Planning and Probate Clinic, and the Business Planning Practicum.

In 2024–2025, clinics represented clients in the following counties: Albany, Big Horn, Campbell, Carbon, Converse, Crook, Fremont, Goshen, Laramie, Natrona, Niobrara, Park, Platte, Sheridan, Sublette, Sweetwater, Uinta, and Washakie.

## EXTERNSHIPS AND PRACTICUMS

The College partners with legal employers to provide meaningful legal work experiences for students while meeting community needs. Students earn academic credit and receive faculty supervision. During the year, students completed placements in Alaska, Colorado, Louisiana, Nebraska, Utah, Virginia, Wisconsin, and across Wyoming counties.

## GEORGE W. HOPPER LAW LIBRARY OUTREACH

The Hopper Law Library ensures access to legal research resources for all Wyoming residents. Staff collaborate with public librarians statewide to strengthen awareness of local legal resources. Online research guides and video tutorials support independent research, and reference librarian services are available in person and by phone to Wyomingites statewide.

## “WHO ATE THE CUPCAKE?” MOCK TRIAL

The College of Law welcomed second-grade students from Indian Paintbrush Elementary for a hands-on mock trial experience. Students served as judges, jurors, attorneys, bailiffs, and witnesses, gaining an engaging introduction to the justice system and civic responsibility.

## In 2024- 2025 clinics represented clients in:

Albany, Big Horn, Campbell, Carbon, Converse, Crook, Fremont, Goshen, Laramie, Natrona, Niobrara, Park, Platte, Sheridan, Sublette, Sweetwater, Uinta, and Washakie.

# HAUB SCHOOL OF ENVIRONMENT AND NATURAL RESOURCES



## BIODIVERSITY INSTITUTE OUTREACH

The Biodiversity Institute delivered dozens of “K through gray” educational programs statewide, providing hundreds of Wyoming residents with opportunities to engage directly with the state’s wild and working lands.

## WYOMING NATURALIST PROGRAM

The Wyoming Naturalist Program cultivates a statewide network of volunteers committed to conservation education and service. Participants receive training in biodiversity, ecology, management, and interpretation, preparing them to serve as community leaders in natural resource stewardship.



## WYOMING RESOURCE POLICY FORUM AT UCROSS

The annual Wyoming Resource Policy Forum convenes leaders from government, industry, and academia to discuss emerging opportunities and strategic positioning for the state. Topics included rare earth development, natural capital accounting, satellite-enabled water markets, and AI infrastructure.



## WYOMING CONSERVATION CORPS

The Wyoming Conservation Corps provides hands-on education and service opportunities, completing hundreds of miles of trail work and stream stabilization, along with forest fuel reduction and invasive species mitigation projects statewide.



# HONORS COLLEGE



## HONORS PAID INTERNSHIPS

Honors sponsors paid internships across Wyoming, allowing students to apply academic knowledge in professional settings. In 2024–2025, 40 internships were supported with partners including the state legislature, Governor’s Office, UW Art Museum, Laramie Downtown Clinic, Equality State Policy Center, Laramie Main Street, Wyoming Arts Alliance, and others. Employers benefit from highly motivated interns contributing meaningful value.



## HIGH SCHOOL INSTITUTE

The High School Institute is a three-week residential summer program serving 65–80 rising juniors from across Wyoming. Students engage in rigorous science and humanities coursework, extracurricular activities, and community building. The program remains highly affordable for families, with scholarships available to ensure access for students regardless of financial need.

## CO-CURRICULAR CIVIC AND ENGAGED LEARNING (SOAR BADGES)

Honors students complete competency-based SOAR Badges at first-year and advanced levels. Experiences include research, internships, leadership, entrepreneurship, cross-cultural learning, and community service. The First-Year Badge includes a community service requirement, while the Advanced Badge builds continued engagement. The program prepares students to meet complex future challenges through experiential learning.

IN 2024-2025:

**40**  
**internships**

were supported by  
the Honors College  
across the state.

# SCHOOL OF COMPUTING



## WYOMING COMPUTING SYMPOSIUM

A statewide gathering uniting students, faculty, researchers, industry, and public partners around “Computing for Wyoming.” Through talks, panels, and hands-on sessions, participants explore real-world applications across industries, building connections, sharing ideas, and advancing collaborative solutions that position computing as a driver of innovation across Wyoming communities.

## S.U.R.E. (SCHOOL OF COMPUTING UNDERGRADUATE RESEARCH EXPERIENCE)

SURE connects Wyoming students with paid, mentored research across disciplines and computing domains. Through hands-on projects, students collaborate with faculty and partners, gaining real-world experience, building skills, and contributing to impactful work—expanding pathways into research, graduate study, and high-demand careers across the state and beyond.

## SPARC (STUDENTS PRACTICING APPLIED, REAL-WORLD COMPUTING)

SPARC brings hands-on computing to Wyoming communities, equipping educators and middle school learners with tools, curriculum, and support. Through robotics and coding experiences, students explore real-world problem solving early—expanding access, building confidence, and inspiring the next generation of innovators across rural and underserved areas statewide.

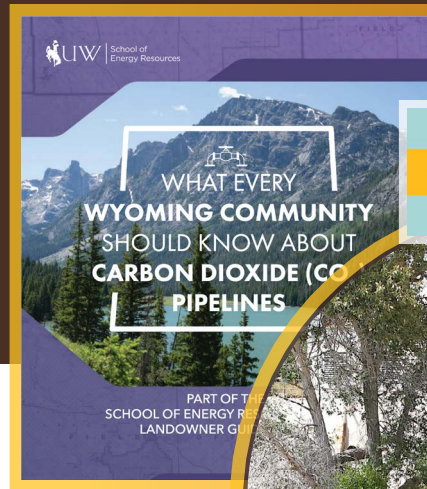
## FREMONT COUNTY FARM & RANCH DAYS

School of Computing faculty partnered with UW Extension to engage Wyoming’s ranching community in climate-informed decision making. Through hands-on demonstrations of WYAdapt, participants explored data-driven planning for agriculture, fostering dialogue, local insight, and stronger connections between computing tools and real-world challenges across Wyoming landscapes.

## WYOMING OPEN SCIENCE DATA SUMMIT

The School of Computing co-hosted the Wyoming Open Science Data Summit, convening 100+ participants from 26 organizations statewide. In partnership with Advanced Research Computing Center and UW Libraries, the event advanced collaboration, data stewardship, and workforce development—strengthening Wyoming’s capacity for open, data-driven research, innovation, and community engagement across sectors.

# SCHOOL OF ENERGY RESOURCES



*Photo credit Mike Koshmrl/WyoFile*

## ENERGY FRONTIER: THE WYOMING LANDSCAPE PODCAST

The School of Energy Resources launched “Energy Frontier: The Wyoming Landscape,” a podcast series featuring academic researchers, industry professionals, students, and policymakers. With over 50 episodes, the podcast explores Wyoming’s historic and emerging energy landscape, examines industry trends, and promotes informed discussion about technology, policy, careers, and innovation.

## TRIBAL ENERGY SUMMIT

The inaugural Tribal Energy Summit convened leaders from energy-producing tribal nations and tribal energy companies. The summit created space for dialogue about challenges and opportunities in rural energy development and strengthened relationships between UW and tribal partners.

## COMMUNITY LANDOWNER GUIDE SERIES

Developed by the JOULE research group, this guide series addresses frequently asked questions about carbon dioxide capture, transportation, and storage. The guides provide accessible, relevant information to help landowners and communities make informed decisions about CO<sub>2</sub> infrastructure and policy considerations.

## ENERGY ENGAGEMENT, LEADERSHIP, AND CAREERS (ELC) PROGRAM

The ELC Program advances community engagement, workforce development, and leadership training in energy-producing and energy-adjacent districts. The program integrates local knowledge, industry collaboration, social science capacity building, and innovative education to prepare the next generation of energy leaders.

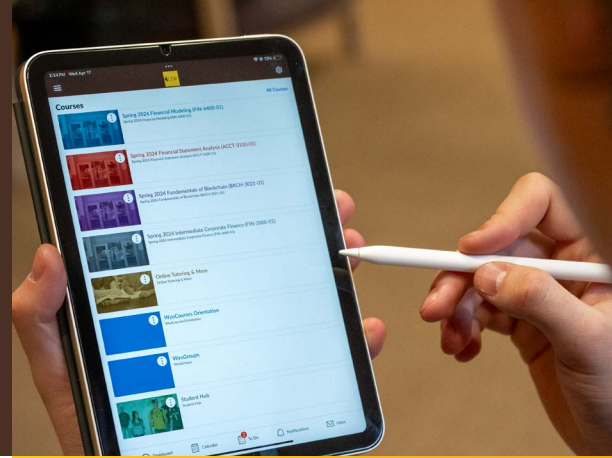
## CONSOLIDATED REVIEW OF ENERGY IN WYOMING (CREW) REPORT

The CREW report provides quarterly data and analysis on Wyoming’s energy sector, including oil, gas, coal, uranium, wind, soda ash, and electricity generation. The report highlights employment trends, economic indicators, and state tax revenues to support informed decision-making.



# FEATURED STATEWIDE ENGAGEMENT





## ART MUSEUM

### ANN SIMPSON ARTMOBILE

The Ann Simpson Artmobile is the University of Wyoming Art Museum's mobile outreach program, bringing art experiences directly to communities across Wyoming. Through tailored programs for schools, libraries, and community centers, the Artmobile provides access to art for all ages, reaching 3,670 participants in 2024–25 and serving 19 counties and the Wind River Reservation since inception.

### PREK-12 PROGRAMS

The UWAM provides extensive outreach and inreach programs for youth from Pre-K through 12th grades. Weekly and monthly offerings integrate guided gallery exploration, sensory and studio-based artmaking, and caregiver engagement for early learners, alongside K–12 field trips, homeschool sessions, and summer camps. These cross-curricular, skill-building, and age-specific creative experiences reached over two thousand Wyoming students in 2024-25.

### PUBLIC ENGAGEMENT INITIATIVES

The UWAM offers a robust slate of public programs year-round that foster community connection through arts learning and cultural events. Key initiatives include public artist and visiting scholar presentations, community workshops, exhibition openings and receptions, the annual Student Juried Exhibition, seasonal celebrations, and other special events, all drawing strong and consistent attendance.

## UW LIBRARIES

### AI SUMMIT

In partnership with the Wyoming State Archives and Wyoming State Library, UW Libraries hosted the 2025 AI Summit for more than 60 library and archive professionals. The summit explored AI's impact on information work and featured keynote speaker Dr. Daniel A. Reed.

### OVERDRIVE/LIBBY EBOOK COLLECTIONS

UW Libraries licenses eBook collections for statewide access, collaborating with the Wyoming State Library to distribute titles through county and community college libraries.

### RESEARCH DATABASES

UW Libraries subscribes to 85 databases from nine vendors, investing approximately \$872,496 annually to ensure statewide access. Wyoming residents may log in using county, community college, or WYLD library cards.

# NATIVE AMERICAN EDUCATION, RESEARCH, AND CULTURAL CENTER (NAERCC)



The Native American Education, Research & Cultural Center (NAERCC) at the University of Wyoming is committed to building community, offering support and addressing the unique needs of UW’s Indigenous students.

## NATIVE AMERICAN SUMMER INSTITUTE (NASI)

The Native American Summer Institute continued to provide a residential, pre-college experience for Native American high school students (current 9th–12th grade), especially from the Wind River Reservation, surrounding communities, and Laramie. Participants experienced college life — living in residence halls, participating in academic workshops, cultural activities, and community building — designed to strengthen leadership and promote higher-education aspirations. The program expanded in reach and applications, reflecting NAERCC’s ongoing partnerships with Native communities across the region.

## NATIVE AMERICAN HERITAGE MONTH & CULTURAL ENGAGEMENT

In November 2024, NAERCC, alongside the Native American and Indigenous Studies program and the High Plains American Indian Research Institute (HPAIRI), co-sponsored a monthlong Native American Heritage Month celebration. Events included knowledge lunches, craft and cultural workshops, guest speakers, and community gatherings celebrating Indigenous cultures and identities.

A separate “Tipi Talks” series in November 2025 featured workshops, Native dance, panel discussions, and storytelling held on campus (Prexy’s Pasture), enhancing visibility and dialogue around Indigenous voices.

## STUDENT RECOGNITION & AWARDS

In Spring 2025, Native American Student graduation was held to highlight and celebrate graduating students. The Native American Scholarship and Awards Ceremony was also hosted to honor the academic achievements, leadership, and community contributions of Native American UW students. This event also recognized donors supporting Native student success.

## SUPPORT, COMMUNITY & ACADEMIC INTEGRATION

NAERCC continued its core role as a community and support hub for Native and Indigenous students, offering academic support, cultural enrichment activities, peer mentoring, leadership development, and other campus programs.

# RESEARCH AND ECONOMIC DEVELOPMENT DIVISION (REDD)

As a newly ranked Carnegie R1 institution, UW ranks among the nation's top research universities. The Research and Economic Development Division (REDD) includes more than 25 research centers, institutes, facilities, and service units and providing critical leadership on UW innovation, research and service, enriching student experiences and fueling statewide economic growth.



## SCIENCE INSTITUTE

The Science Institute catalyzes convergence of physical, social, and biological sciences, engineering, humanities, and computing to address Wyoming's needs through transformative research, engagement, and experiential learning.



## THE SCIENCE INITIATIVE ROADSHOW

The Science Initiative Roadshow aims to build curiosity and empower discovery of the natural world through STEM outreach. Their mission is to ignite a passion for STEM, foster lifelong learning and innovation, and inspire interest through hands-on learning for all Wyoming learners. Each year, teams travel statewide to deliver customized, interactive science experiences for K-12 schools, senior centers, and community groups. STEM days, events, and carnivals are also held that invite students and community members to interact with science through themed stations, demonstrations, and experiments.

## WYOMING NATURAL DIVERSITY DATABASE (WYNDD)

The Wyoming Natural Diversity Database (WYNDD) is a service and research unit of the University of Wyoming that maintains a comprehensive database on the distribution and ecology of rare plants, rare animals, and important plant communities in Wyoming.

## HIGH PLAINS AMERICAN INDIAN RESEARCH INSTITUTE (HPAIRI)

HPAIRI is an entity that tribes and scholars can access and utilize both tribally driven projects and UW-conducted research that pertains to Native American people, their lands, and resources. HPAIRI staff is located both on campus and on the Wind River Indian Reservation. HPAIRI has continued to play a critical role in many institutional grants to UW.



## UW INSTITUTE AT THE AMK RANCH

The University of Wyoming Institute at the AMK Ranch is a cooperative effort between the University of Wyoming and the National Park Service. Headquartered on the University of Wyoming campus in Laramie, the UW Institute at AMK Ranch promotes multidisciplinary research in the Yellowstone-Teton area of Rocky Mountains. The Institute operates a field research station at AMK Ranch in Grand Teton National Park, which is open from mid-May through mid- October.

## WYOMING SMALL BUSINESS DEVELOPMENT CENTER (SBDC)

The SBDC Network advances UW's economic development mission by providing entrepreneurs with no-cost advising and educational programs statewide. In 2024–25, it served 1,297 clients, provided 4,655 advising hours, and helped secure \$8.5M in capital. It hosted 44 trainings (593 attendees) and 119 outreach events. Additional specialized service areas within the SBDC supported government contracting, market research, and federal innovation funding, helping hundreds of businesses compete, grow, and secure new opportunities.

## MANUFACTURING WORKS

Manufacturing Works, Wyoming's Manufacturing Extension Partnership center at the University of Wyoming, strengthens the state's manufacturing sector through technical assistance, consulting, and workforce training. The program supports process improvement, supply chain optimization, cybersecurity, quality management, and Industry 4.0 adoption. In partnership with community colleges, the UW College of Business, and economic development organizations, it delivers statewide training in Lean practices, SolidWorks, asset management, and cybersecurity. In 2024-25, Manufacturing Works engaged 165 clients, completed 68 projects, generated \$73.6M in sales, realized \$5.9M in cost savings, and supported \$50.3M in new investments.

## OFFICE OF INDUSTRY AND STRATEGIC PARTNERSHIPS (OISP)

The Office of Industry and Strategic Partnerships connects industry to UW to create meaningful partnerships. These partnerships are opportunities for industry and strategic partners to create mutually beneficial relationships through research, education, and outreach. Student engagement and outreach focus areas are connecting companies with UW students through hands-on opportunities, like internships, career fairs, and outreach.

# JAY KEMMERER WORTH INSTITUTE

The mission of Jay Kemmerer WORTH Institute is to expand, and diversify Wyoming’s economy by supporting the outdoor recreation, tourism, and hospitality industries. This mission is achieved through research, workforce development, and statewide engagement.



## STATEWIDE REACH

Delivered programming to people in all 23 Wyoming counties, engaged over 60 communities, and hosted two major events: the 2025 Wyoming Outdoor Recreation Summit and the Wyoming Search and Rescue Conference.

## WORKFORCE INNOVATION

More than 100 students benefitted from WORTH’s workforce program, including hospitality trainings, career fairs, and funded scholarships. The new Haub School Virtual Career Center and the Western Hospitality Certificate program expanded professional development access statewide.

## OUTDOOR GUIDE CERTIFICATION PROGRAM

The WORTH Institute continued to offer its online, competency-based Outdoor Guide Certification Course, training 31 students globally in 2024–2025 through six courses. Hosted on the WyoLearn platform, this program equips guides with essential skills and knowledge to succeed in the outdoor industry.

## HOSPITALITY AND TOURISM FAIR

In February 2025, the WORTH Institute hosted its most successful Hospitality and Tourism Fair to date. The event welcomed 20 employers—including Xanterra, Brush Creek Ranch, Hilton Garden Inn, and the Grand Teton Lodge Company—and over 100 students, fostering meaningful employment and internship connections.

## INTERNSHIP SUPPORT AND SCHOLARSHIPS

In 2024–2025, the WORTH Institute supported 11 students through the WORTH Institute Internship Scholarship and the Pulte Gateway to Hospitality Student Transformation Fund. These awards, ranging from \$500 to \$17,000, empowered students to pursue high-impact internships across Wyoming with organizations such as: Friends of the Bridger-Teton, Visit Laramie, Sinks Canyon State Park, Hilton Garden Inn, Wilderness Adventures, Cowboy Saloon, Wyoming Business Council, and Glendo State Park. Visit [haubcareers.uwyo.edu/channels/outdoor-recreation-tourismmanagement/](https://haubcareers.uwyo.edu/channels/outdoor-recreation-tourismmanagement/) to watch the student stories series.

# UW CASPER

The University of Wyoming at Casper (UW Casper) is an essential part of the institution, with the campus providing accessible, high-quality education, particularly for non-traditional, transfer, and working students in central Wyoming. Located on the Casper College campus, it offers specialized bachelor's and master's degrees, small class sizes, and tailored support for student veterans.

## HEROES SKEET SHOOT

A charity clay target shooting event in Casper, that raises money to support local veteran-related programs. The University of Wyoming at Casper worked with veteran-support focused local organizations to organize this event. The Casper Skeet Club hosted the event to raise support for the UW Casper Heroes Scholarship and the Veteran Support Fund.

## LEADING THROUGH TRAUMA-INFORMED CARE

An informative lunch training on how to lead through traumatic events. This was a collaboration between the UW Casper ORG Leadership and Social Work faculty and the Wyoming Nonprofit Network. Held on October 24, 2024, this was open to the public, but mainly targeted individuals who work with traumatic situations including the YMCA, WBI, TRIO, Social workers, and more.

## LEADERSHIP FOR TOMORROW: STARTING NOW" PODCAST

Starting in 2025, UW Casper produces a podcast featuring discussions with inspiring leaders from across Wyoming, sharing experiences, insights, and strategies for leadership and success. This podcast focuses on how to empower individuals to make a difference in their community.

# STUDENT ENGAGEMENT & VOLUNTEERING

The University of Wyoming (UW) continues to strengthen its commitment to community engagement by cultivating meaningful student involvement beyond the classroom. Through structured volunteer programs, student organizations, leadership initiatives, and community engagement opportunities, UW empowers students to serve Wyoming communities while developing leadership, teamwork, and professional competencies.

With more than 250 recognized student organizations, UW fosters a strong culture of service embedded across academic, professional, and social groups. Many organizations integrate philanthropy, outreach, and community partnerships into their annual programming.

Student engagement efforts are coordinated primarily through the University of Wyoming Center for Student Involvement (CSIL) & Leadership and its Service, Leadership & Community Engagement (SLCE) office, which serves as the central hub for community involvement for students.





## THE SERVICE, LEADERSHIP & COMMUNITY ENGAGEMENT OFFICE

The SLCE Office provides many opportunities for students to engage in meaningful service across Laramie and beyond. Some key student volunteer and engagement activities to highlight are the following:

### VOLUNTEERHUB

A central platform where students can find, respond to, and track volunteer opportunities with local nonprofit organizations and community partners (especially around Laramie). Students can also log their service hours and build a record of volunteer activity.

### SERVICE SATURDAYS

Service Saturday is an opportunity for all members of the University of Wyoming community to give back. Events are hosted once monthly during the school year with different service events each month.

### THE BIG EVENT

A signature one-day service program allowing students to give back directly to the Laramie community through hands-on activities and local partnerships.

### VOLUNTEER FAIRS

SLCE organizes Volunteer Fairs each semester (e.g., fall and spring), where local nonprofits and community organizations tabling on campus showcase ways students can get involved.

### IMPACT SNAPSHOT (FROM 2024-2025)

UW's SLCE Office programming demonstrates measurable community impact:

- 840+ participants (students, faculty, staff, and community members)
- Approximately 2,000 volunteer hours contributed
- Estimated economic impact value of \$70,000 in volunteer service
- Partnerships with numerous local nonprofits and community organizations

These numbers reflect both direct community benefit and the development of graduates prepared to contribute meaningfully to Wyoming.

# STUDENT EDUCATIONAL OPPORTUNITY

SEO offers both campus-based and statewide outreach programs aimed at promoting college access and success for more Wyoming students and families. They offer academic tutoring, mentorship programs and financial aid guidance to limited-income families, first-generation college students, and students with disabilities. These SEO services are available at the University of Wyoming, on the Wind River Indian Reservation and statewide, serving 7th-12th grade students and UW undergraduates.



## TRIO STUDENT SUCCESS SERVICES (SSS)

Provides holistic academic and personal support for UW undergraduates who are first-generation, limited income, or have documented disabilities. Supports student persistence, academic performance, and timely degree completion through advising, tutoring, and coaching.

## MCNAIR SCHOLARS PROGRAM

The McNair Scholars Program is an undergraduate research program and graduate school preparation program for college sophomores, juniors, and seniors. We provide services that promote successful entry to graduate school and increase the likelihood that participants will complete a Ph.D. program.

## GEAR UP WYOMING

GEAR UP Wyoming is designed to expand postsecondary education pathways for Wyoming students. Our state is home to driven, innovative individuals, and they are eager to help more students access the educational resources they deserve. Focused on supporting low-income families, GEAR UP Wyoming provides vital resources to ensure success in higher education. Each year, GEAR UP Wyoming serves a minimum of 2,000 students and their families, helping them overcome educational barriers and prepare for a successful future. They're committed to making college a reality for more Wyoming students, including providing college campus summer experiences.

## EDUCATIONAL OPPORTUNITY CENTERS (EOC)

A federally funded TRIO program offering free college admissions advising for adults, veterans, military families, and high school students. Services include college search support, financial aid guidance, FAFSA assistance, scholarship exploration, and admissions application support. Regional EOC coordinators serve communities across the state, expanding SEO's direct outreach.

# 2024-2025 UNIVERSITY OF WYOMING ENGAGEMENT COUNCIL

The University of Wyoming Engagement Council brings together representatives from every college, school, and key institutional initiative to coordinate, strengthen, and elevate community engagement efforts across the state. The Council advances strategic alignment between UW’s land-grant mission and its responsibility to serve Wyoming, ensuring that engagement is integrated, mission-driven, and responsive to statewide priorities.

Unit Representation	Name	Title(s) or Role(s)
<b>COLLEGES/SCHOOLS</b>	Agriculture, Life Sciences & Natural Resources	Matt Helie Associate Director, UW Extension
	Arts and Sciences	Jean Garrison Director, Malcolm Wallop Civic Engagement Program   Professor of International Studies/Political Science
	Business	Nicole Choi Associate Professor of Finance
	Education	Colby Gull Director, Trustees Education Initiative & WY School-University Partnership
	Engineering and Physical Sciences	Cindy Jones Assistant Dean for Student Success   Director of K-14 STEM Education Outreach Office
	Haub School of Environment and Natural Resources	Temple Stoellinger Associate Dean, Haub School   Wyoming Excellence Chair   Dual Appointment in the College of Law
	Health Sciences	Rachel Watson Director, Science Initiative Learning Actively Mentoring Program (LAMP)   Senior Academic Professional, Division of Kinesiology and Health/Microbiology Program
	Law	Kipp Coddington Director, Energy, Environment & Natural Resources Clinic   Director of Externships   Professor of Practice
	School of Computing	Raya Hegeman-Davis Director of Engagement
	School of Energy Resources	Christine Reed Director of Outreach
<b>OTHER PARTNER UNITS</b>	Academic Affairs	Nevin Aiken Special Assistant to the Provost for Experiential Education   Associate Professor of Political Science and International Relations, SPPAIS
	Innovation Wyrkshop	Emily Leinen Makerspace Manager, College of Engineering and Applied Sciences
	Jay Kemmerer WORTH Institute	Hailey Sorg WORTH Extension Educator, WORTH/UW Extension
	Native American Education, Research, and Cultural Center (NAERCC)	Reinette Redbird Tendore Director
	Office of Community Engagement	Erin Olsen Director   Co-chair, Engagement Council
	Office of Community Engagement	Chicory Bechtel Associate Director   Co-chair, Engagement Council
	Research Development Office and WY EPSCoR/IDeA	Shawna McBride Senior Director
	Science Initiative	Erin Klauk Co-Director, SI Roadshow and Community Engagement   Assistant Lecturer, Department of Geology and Geophysics
	Science Kitchen and WY NASA Space Grant Consortium	Megan Candelaria Director, Science Kitchen and Co-Director of WY NASA Space Grant Consortium
	Student Affairs	Shelby Kennedy Service-Learning Coordinator, Service, Leadership, and Community Engagement (SLCE)
	Student Educational Opportunity	Michael Wade Associate Director
	UW at Casper	Brent Pickett Dean
	UW Foundation	Angela ver Ploeg Senior Director of Corporate Engagement, Office of Industry and Strategic Partnerships
UW Libraries	Jessica Rardin Assistant Librarian, Libraries Education & Research Services	



UW

Office of Community  
Engagement

---

Bureau of Mines • 1000 E. University Ave., Laramie, WY 82071  
(307) 766-4129 • [engage@uwyo.edu](mailto:engage@uwyo.edu) • [uwyo.edu/engagement](http://uwyo.edu/engagement)