



STATE TRUST LAND

AN EMERGING ISSUE FORUM

APRIL 22-23, 2025

MARIAN H. ROCHELLE GATEWAY CENTER
LARAMIE, WYOMING

Convened by the Ruckelshaus Institute at the University of Wyoming's Haub
School of Environment and Natural Resources in partnership with
the Wyoming Office of State Lands and Investments



Table of Contents

Overview	1
About Us	2
Our Sponsors	3
Agenda	4
Speaker bios	8

The Emerging Issue Forum is a chance to get ahead of an emerging natural resource issue in Wyoming. This year, the focus is state trust land management. Held annually, the forum brings together stakeholders and decision-makers to jumpstart collaboration, providing space for the cross-pollination of ideas and solutions.

The history of state trust land is inextricable from the very foundations of our democracy, but is often overlooked or misunderstood. From the mid 1700s to the late 1950s, state trust lands were granted to states upon admission to the union as a way to encourage public education, which America's founders viewed as integral to a thriving republic. Today, there are approximately 46 million acres of state trust land across 23 states. 85 percent of them lie in the Intermountain West—Arizona, Colorado, Idaho, Montana, New Mexico, Oregon, Utah, Washington, and Wyoming.

Trust lands are managed to make money for schools and other public institutions, generally by selling leases for oil and gas development, mining, grazing, and logging, and through land sales. Taking the average of 2019 to 2023, Wyoming's 3.5 million surface acres and 3.9 subsurface acres produce around \$163 million in revenue annually, the vast majority of which comes from mineral leases and royalties, particularly oil and gas development. In addition to revenue generation, in 1992 the Wyoming Board of Land Commissioners granted the public the privilege of using trust lands that they could access without trespassing on other lands, though off-road vehicle use, camping, open fires, and use of cultivated cropland are prohibited.

As markets evolve and public interest in the management of Wyoming's state trust lands grows, this is an opportunity to create shared understanding about the history and role of state trust lands, while exploring the potential of new and emerging uses to integrate with existing uses and provide additional revenue streams to support Wyoming's public institutions.

Goals

1. Increase awareness and understanding of the unique role of state trust lands to provide benefit to public institutions, primarily K-12 schools.
2. Discuss challenges that limit the Office of State Lands and Investments' ability to effectively manage natural resources and funds for current and future generations or take advantage of new and emerging opportunities.
3. Identify strategies and paths forward that help state trust lands meet their constitutional obligation to generate revenue for the beneficiaries while also supporting the broader needs of Wyoming citizens.

About Us



Ruckelshaus Institute

The Ruckelshaus Institute:

Inspired by William D. Ruckelshaus's legacy of collaboration, the Ruckelshaus Institute supports community-driven approaches to environmental challenges by advancing collaborative decision-making, convening discussions around emergent policy and management questions, and communicating insights and practical approaches to critical natural resource issues.

Learn more at uwyo.edu/ruckelshaus



Office of State Land and Investments:

OSLI is responsible for carrying out the policy decisions of the State Board of Land Commissioners and the State Loan and Investment Board, and has a fiduciary duty to the State's trust beneficiaries. The agency's mission is to effectively manage natural resources and funds for current and future generations.

To stay informed about OSLI events, subscribe to their GovDelivery notifications at lands.wyo.gov/subscribe.

Thanks to our steering committee members

- Eric Barlow, Senator, Wyoming State Legislature
- Travis Brammer, Director of Conservation, Property and Environment Research Center
- Angi Bruce, Director, Wyoming Game and Fish Department
- Jason Crowder, Former Deputy Director, Office of State Lands and Investments
- Marguerite Herman, Board Member, Advocates for School Trust Lands
- Jim Magagna, Executive Vice President, Wyoming Stock Growers Association
- Jeremiah Rieman, Executive Director, Wyoming County Commissioners Association



Thanks to our sponsors

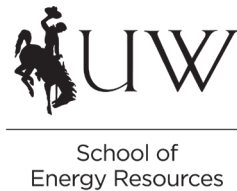


Property and Environment Research Center:

PERC is dedicated to advancing conservation through markets, incentives, property rights, and partnerships.



Gina Guy
Center for
Land and
Water



UW School
of Energy
Resources



Jay
Kemmerer
WORTH
Institute



Wyoming County
Commissioners
Association



Wyoming
Stock Growers
Association

Thanks to our planning team

- Birch Malotky, Emerging Issues Initiative Coordinator, Ruckelshaus Institute
- Melanie Armstrong, Director, Ruckelshaus Institute
- Paisley Blair, Graduate Research Assistant, Haub School of Environment and Natural Resources
- Callie Berman, Research Scientist, Ruckelshaus Institute
- Anastasia Brady, Special Events Coordinator, Haub School of Environment and Natural Resources
- Temple Stoellinger, Associate Dean, Haub School of Environment and Natural Resources

Day 1 Agenda: April 22

Marian H. Rochelle Gateway Center | 222 S 22nd St, Laramie, WY 82070

8:30-9:30am: Breakfast and Registration

9:30-9:45am: Welcome

- John Koprowski, Dean, Haub School of Environment and Natural Resources
 - Stacia Berry, Director, Office of State Lands and Investments
-

9:45-11:00: Presentation

For the Beneficiaries: Illuminating the history and role of state trust lands, understanding current use and management, and looking to future challenges and opportunities.

- Jason Crowder, Former Deputy Director, Office of State Lands and Investments
-

11-11:15am: Break

11:15-12pm: Lightning talks

Money Matters: A brief foray into the investment side of state trust land.

- Trust principles and fiduciary responsibility, Bridget Hill, Wyoming Attorney General
 - Turning land into sustainable revenue streams, Curtis E. Meier, Jr., Wyoming State Treasurer
 - Funding education and other public institutions, Brian Farmer, Executive Director, Wyoming School Boards Association
-

12-1pm: Lunch

1-2pm: Panel + Q&A.

Managing in the Mix: Successes and challenges navigating the interface between trust parcels and the lands and communities around them.

- Moderator: Melanie Armstrong, Ruckelshaus Institute Director
- Sarah Brown Mathews, Executive Director, Pilot Hill Inc.
- Len Carlman, Teton County Commissioner
- Bill Novotny, Johnson County Commissioner
- Carter Napier, Casper City Manager



2-3pm: Facilitated dialogue + small group discussions

Engaging the Public, Meaningfully: A conversation about achieving more sustainable, less contentious land-use decisions.

- Moderator: Callie Berman, Research Scientist, Ruckelshaus Institute
- Erica Jensen, Land Management Supervisor, Trust Land Management Division, Office of State Lands and Investments
- Ben Bump, Assistant Director, Field Services Division, Office of State Lands and Investments
- Melissa DeFratis, Communications and Policy Analyst, Office of State Lands and Investments

3-3:15pm: Break

3:15-4:15pm: Panel + Q&A

Beyond our Borders: State trust land management and innovation in other western states

- Moderator: Temple Stoellinger, Associate Dean, Haub School
- Robyn Sahid, Commissioner, Arizona State Land Department
- Mindy Gottsegen, Conservation Services Manager, Colorado State Land Board
- Jim Elbin, Trust Lands Division Administrator, Idaho Department of Lands
- Ryan Weiss, Deputy Trust Lands Administrator, Montana Department of Natural Resources and Conservation

4:15-4:45pm: Presentation + Q&A

\$100 million: An update on Kelly Parcel revenue and the proposed purchase of land in the Powder River Basin

- Cody Booth, Assistant Director, Trust Land Management Division, Office of State Lands and Investments

4:45-6:00pm: Reception and poster session

Enjoy appetizers and a cash bar as you peruse capstone projects about state trust land from the Haub School's graduate and undergraduate students

Optional: Dinner at Altitude Chophouse & Brewery

320 S 2nd St, Laramie, WY 82070. Back room (seats 70) reserved under "State Trust Land Forum."

Starting at 6:00pm and continuing through the evening, connect with other forum attendees and keep the conversation going with a buy-your-own dinner at Altitude Chophouse & Brewery in downtown Laramie.

Day 2 Agenda: April 23

Marian H. Rochelle Gateway Center | 222 S 22nd St, Laramie, WY 82070

8-9am: Breakfast

9-10:30am: Concurrent workshop sessions. These sessions will be driven by small-group discussions, so please come prepared to participate.

New and Emerging Uses: What are the barriers and opportunities, how could it work, what benefits could it provide to the beneficiaries and others?

- Salon A: **Renewable energy development**
 - Kickoff presentation: Bryan Leonard, SER Chair and Associate Professor, Haub School and School of Energy Resources
 - Kickoff presentation: Justin Loyka, Wyoming Energy Program Director, The Nature Conservancy
 - Salon B/C: **Recreation and public access**
 - Kickoff presentation: Temple Stoellinger, Associate Dean, Haub School
 - Salon D/E: **Residential and commercial development**
 - Kickoff presentation: Arne Jorgensen, Mayor, Jackson
-

10:30-11am: Break

11-12:30pm: Concurrent workshop sessions. These sessions will be driven by small-group discussions, so please come prepared to participate.

New and Emerging Uses: What are the barriers and opportunities, how could it work, what benefits could it provide to the beneficiaries and others?

- Salon A: **Carbon capture and sequestration**
 - Kickoff presentation: Tara Righetti, Occidental Chair in Energy and Environmental Policy, School of Energy Resources, Haub School, and College of Law
 - Kickoff presentation: Erin Middleton, President, Carbon Solutions
- Salon B/C: **Conservation**
 - Kickoff presentation: Shawn Regan, Vice President of Research, Property and Environment Research Center



12:30-1:30pm: Lunch

1:30-2:30: Concurrent workshop sessions. These sessions will be driven by small-group discussions, so please come prepared to participate.

Where the morning is primarily focused on “defining the problem,” or better understanding the situation, this afternoon session will be focused on designing solutions in working groups formed around specific challenges raised during the morning discussion.

Bringing it Together: Integrating emerging and existing uses through partnerships and policy

- Salon A: **Renewable energy and carbon capture and sequestration**
 - Salon B/C: **Recreation and conservation**
 - Salon D/E: **Residential and commercial development**
-

2:30-3:30: Salon B/C: Panel + Q&A.

Takeaways: Bringing knowledge and partnerships from the forum into your work

- Moderator: Birch Malotky, Emerging Issues Initiative Coordinator, Ruckelshaus Institute
- Stacia Berry, Director, Office of State Lands and Investments
- Jim Magagna, Executive Vice President, Wyoming Stock Growers Association
- Eric Barlow, Senator, Wyoming State Legislature
- Travis Brammer, Director of Conservation, Property and Environment Research Center
- Marguerite Herman, Board Member, Advocates for School Trust Lands

Speaker bios

Melanie Armstrong

Melanie Armstrong is the Director of the Ruckelshaus Institute and an Associate Professor in the Haub School of Natural Resources at the University of Wyoming. In these roles she aims to integrate scholarship and collaborative practice to enable creative, scientific, and community-driven responses to land management challenges. She researches how social systems are built around shifting ideologies of nature and is the author of *Germ Wars: The Politics of Nature and America's Landscape of Fear* and co-author of *Environmental Realism: Challenging Solutions*. Her 15-year career with the National Park Service also provided a laboratory for exploring complex natural resources issues in the landscapes of the American West.

Eric Barlow

Eric Barlow grew up on his family's ranch in Campbell County. Eric and his wife, Kelly, continue to operate the ranch raising cattle, sheep and yak. Eric practiced food animal veterinary medicine for twenty years and served on the Wyoming Livestock Board. In 2012, he was elected to the Wyoming House of Representatives and served five terms. Currently serving in the Wyoming Senate, Eric is Chairman of the Senate Labor, Health and Social Services Committee.

Callie Berman

Callie Berman is the Postdoctoral Research Associate with the Private Lands Stewardship Program (PLS) in the Ruckelshaus Institute. Callie's research with the PLS analyzes the human dimensions of conservation and land use across the North American Central Grasslands. Her work looks to identify conservation strategies across private lands in the biome while considering diverse stakeholder interests, pressures from energy and residential development, and land use changes.

Stacia Berry

Stacia Berry is a fourth generation Wyomingite with deep roots in agriculture. Prior to her appointment as Director of the Office of State Lands and Investments, Stacia practiced law at Koch Law P.C. No stranger to public service, Stacia served as Deputy Director of the Wyoming Department of Agriculture from 2015 to 2022. Stacia's focus in her legal practice is water, natural resources, and private property law. Given this experience, Stacia has a passion for public policy development, the legislative process, and government relations.

Cody Booth

Cody joined the Office of State Lands and Investments in 2015 as the Natural Resources Specialist in the Lander Field Office. Since then, Cody has held the Surface Leasing Supervisor position and



now serves the agency as the Assistant Director. Cody graduated from the University of Wyoming, where he majored in Rangeland Ecology and Watershed Management with minors in Restoration and Reclamation and Soil Science.

Travis Brammer

Travis Brammer joined PERC as its first-ever Director of Conservation, overseeing PERC's Conservation Innovation Lab and all field projects. Raised as a seventh-generation family cattle rancher in Colorado with professional expertise in western conservation issues, Travis is passionate about the intersection of conservation and agriculture. He began his career at the Wyoming Stock Growers Land Trust rising to become the group's Interim Conservation Director. He later graduated with honors from the University of Wyoming College of Law and most recently served as a Conservation Fellow at the Ruckelshaus Institute and MacMillan Private Lands Stewardship Program.

Ben Bump

Ben Bump is the Assistant Director - Field Services in the Office of State Lands and Investments, and has also served as Mineral Leasing Supervisor and Natural Resources Specialist during his fifteen years at OSLI. Ben is a graduate of the University of Wyoming's College of Agriculture and Haub School of Environment and Natural Resources.

Len Carlman

Teton County Commissioner Len Carlman got his first orientation to state lands in Wyoming in about 1983 through a meticulous report published the year before by the Jackson Hole Alliance for Responsible Planning, where he was a fresh-out-of-college intern for that non-profit entity. 42 years later, with a UW law degree in 1995 and kids now grown and fledged, he is still a student of Wyoming's state lands. Creating legally sound and financially favorable strategies for the use of state lands in Teton County is included in the 2025-26 set of Teton County Commissioners' Strategic Initiatives.

Jason Crowder

Jason Crowder is the former deputy director of the Office of State Lands and Investments, where he worked in various positions for 18 years.

Melissa DeFratis

Melissa DeFratis has worked for the State of Wyoming for 14 years. She spent 5 years in Governor Mead's Office before becoming the Legislative Liaison at the Wyoming Department of Transportation, where she helped strengthen the agency's relationship with state government. In 2024, she joined the Office of State Lands and Investments as the Communications and Policy Analyst, a newly established position in the agency.

Jim Elbin

Jim is an accomplished natural resources leader with over twenty-five years of experience, including eighteen in supervisory roles. As the Trust Lands Division Administrator, he oversees the budget, policy, and procedural development for Idaho's endowment lands through leading the Timber Management, Technical Services, and Real Estate Bureaus for the Department of lands. His experience and includes silviculture, timber sale set up, inventory management, lease development, and contract administration, ensuring the responsible stewardship of Idaho's natural resources. He is a big proponent of incorporating technology and has driven the acquisition and development of LiDAR and increasing the use of ESRI based tools for strategic and tactical planning.

Brian Farmer

Brian Farmer, Executive Director of the Wyoming School Boards Association (WSBA) since January 2014, brings a strong commitment to Wyoming education. His prior experience includes service on the WSBA board of directors and as a locally elected school board member in Cheyenne. Farmer's professional background encompasses law and policy, with roles at the University of Wyoming, the Wyoming Legislature, and the State of Wyoming. He's a University of Wyoming guy through and through, with four degrees from there, and his wife and two of his kids are also UW alumni, sharing 10 degrees from UW between them.

Mindy Gottsegen

Mindy Gottsegen is the Conservation Services Manager for the Colorado State Land Board, where she has worked for 17 years. She develops and implements a range of stewardship plans and programs that promote responsible stewardship of natural values and protection of species and ecosystems on the agency's 2.7 million acres of state trust land.

Mindy also manages the agency's Ecosystem Services program that restores degraded wetlands, streams, and wildlife habitat through regulatory commercial mitigation and species conservation banks. She also developed the Colorado State Land Board's biological carbon program to accomplish stewardship goals and generate new sources of revenue through the voluntary carbon market for trust beneficiaries and agricultural lessees. These projects include nature-based carbon sequestration reforestation projects on state trust lands burned in wildfires, and regenerative grazing practices that sequester rangeland soil carbon. All revenue generated from the agency's share of these projects go to the agency's trust beneficiaries, primarily the public schoolchildren of Colorado. Mindy has a BS in Environmental Management and a Master's degree in City and Regional Planning, both from Rutgers University.

Marguerite Herman

Marguerite Herman is a board member of Advocates for School Trust Lands, which works to inform policymakers and beneficiaries about trust lands and to advocate for best practices to manage the



land and funds for public schoolchildren. Marguerite has a professional background in journalism and education, served two terms on the Laramie County School District 1 Board of Trustees and lobbies for the League of Women Voters in the Wyoming Legislature. She has lived in Cheyenne for 45 years.

Bridget Hill

Bridget Hill is the Attorney General for the State of Wyoming. Early in her legal career, Bridget was as an assistant attorney general where she represented various state agencies including the Office of State Lands and Investments, and the Board of Land Commissioners. In October of 2013, Bridget was appointed the Director of the Office of State Lands and Investments by Governor Matthew H. Mead. Bridget was serving as the Director when she was appointed Attorney General by newly elected Governor Mark Gordon in 2019.

Erica Jensen

Erica Jensen was raised on a dairy farm in the Pacific Northwest before moving to Wyoming 20 years ago to raise her family. She has been with the State of Wyoming for 8 years and became the Surface Leasing Supervisor at the Office of State Lands and Investments in 2023. Erica graduated from BYU-Idaho with a bachelor's degree in Accounting and Business Administration.

Arne Jorgensen

Arne was recently elected Mayor of Jackson Wyoming after serving on the Town Council for the past six years. An architect and native of Jackson, he was able to return to Wyoming in 1989 and has since practiced architecture with Bruce Hawtin, Architect and later, Hawtin Jorgensen Architects. Deeply committed to our communities, Arne is an emeritus and founding board member of the Jackson Hole Community Housing Trust and is an emeritus and past board member of the Wyoming Community Foundation. During his personal time, he and his family are taking every opportunity to engage with our fantastic public lands.

John Koprowski

John L. Koprowski is dean and a Wyoming Excellence Chair in the Haub School of Environment and Natural Resources at the University of Wyoming after serving as Professor and then Director of the School of Natural Resources and the Environment at the University of Arizona for over 20 years. Dean Koprowski brings a passion for interdisciplinary work through community-based conservation approaches in the United States and more than 30 countries. He is the author of more than 250 scientific papers and 6 books and has received numerous national and international awards for his work on wildlife management and conservation. Most importantly John believes that collaboration and partnership are force multipliers that empower people to make a difference.

Bryan Leonard

Bryan Leonard is the SER associate professor in the Haub School of Environmental and Natural Resources and the School of Energy Resources at the University of Wyoming. His research focuses on the design of institutions to resolve collective action problems associated with natural resource and environmental management. Much of this research can be parsed into three cross-cutting themes: i) tradeoffs between economic efficiency and other goals (such as equity) when assigning property rights; ii) the relationship between property rights and collective action problems; and iii) the modern challenges and historical foundations of public resource management in the American West.

Justin Loyka

Justin Loyka is a professional civil engineer who graduated from Virginia Tech with a degree in mining engineering in 2009. He then moved to Gillette to work as a mining engineer with Peabody Energy, before moving to Lander in 2012. There he worked as a civil and environmental engineer on road, utility, land use planning, and water development projects. Since 2021, as The Nature Conservancy's WY Energy Program Director, he has worked with partners across the state to implement solutions that develop Wyoming's economy while protecting its natural resources and supporting local communities.

Jim Magagna

Jim Magagna has served as Executive Vice President of the Wyoming Stock Growers Association since 1998. Prior to assuming this position, he served as Director of the Wyoming Office of State Lands and Investments and Office of Federal Land Policy. Magagna is a native of Rock Springs, WY, and a lifelong sheep rancher in southwestern Wyoming. Among other offices, he has served as President of the American Sheep Industry Association and President of the National Public Lands Council.

Birch Malotky

Birch Malotky is the Emerging Issues Initiative Coordinator at the University of Wyoming's Ruckelshaus Institute, a division of the Haub School of Environment and Natural Resources. In addition to coordinating activities and stakeholder engagement around emerging natural resource issues in the state of Wyoming, she also writes, edits, produces, and publishes a range of science communication materials for the Haub School, including Western Confluence magazine.

Sarah Brown Mathews

Sarah Brown Mathews has served as the Executive Director for the Pilot Hill Recreation & Wildlife Habitat Management Area since the non-profit was established in 2019. Sarah has a Master's Degree in Natural Science and Education from UW, and over 40 years of non-profit management with various organizations including natural history museums, land trust, and human services organizations. She is a member of the Laramie Parks, Trees and Recreation Advisory Board, and serves as Chair of the Albany County Tourism Board. A Laramie native, Sarah enjoys spending time skiing, hiking and stacking firewood along-side



her sons at a family cabin in the Snowy Range. She is passionate about contributing to quality of life for Wyoming's citizens, and stewarding open space landscapes so that all can experience the treasures of Wyoming's wild places.

Curt Meier

The Honorable Curtis E. Meier, Jr. was sworn in as the 31st Treasurer of the State of Wyoming on January 7th, 2019. Prior to his election, Treasurer Meier served in the Wyoming State Senate for 24 years.

Throughout his career as an elected official, Treasurer Meier has established himself as a champion of the Wyoming and U.S. Constitution, a strong advocate for the rule of law, and a gatekeeper for taxpayer dollars. In addition to his public service, Curt is also a successful businessman, operating a farm and ranch in his hometown of La Grange, and formerly owned and operated an irrigation business. Curt has been recognized by numerous organizations for the work he has done for the citizens of Wyoming, including the distinguished Patrick Henry Award from the Wyoming National Guard Association for his "outstanding and exceptional service to the armed forces." A graduate of the University of Wyoming, Curt holds a Bachelor's Degree in Animal Science. His wife, Charlene, a dedicated elementary school teacher retired after 45 years in Goshen County, after the end of the 2019 school year.

Erin Middleton

Erin Middleton is President of Carbon Solutions, a small research, software, and consulting company that provides support for carbon capture and storage (CCS) projects across the United States, with two CCS projects currently underway in Wyoming. While Wyoming has excellent potential for permanently storing carbon dioxide underground, how and if state lands can be utilized for CCS will influence both how much carbon dioxide can be stored and where transportation networks will be located. As projects continue to develop, understanding how Wyoming and its residents prioritize CCS on state lands will be important for those investing in CCS.

Carter Napier

J. Carter Napier became the City of Casper's City Manager in June 2017. He received a Master of Public Administration from the Romney Institute of Public Management of the Marriott School of Management at Brigham Young University. Carter's first job in local government came in 1997 with the City of Longview, WA as an intern to the City Manager. Following that experience, Carter began his service in Casper, WY in 1998 as an analyst and then became an Assistant to the City Manager. Carter has continued his service in the public sector throughout Wyoming as well as been involved in several programs and boards.

Bill Novotny

Commissioner Bill Novotny is a fourth generation Johnson County native. He was elected to the Commission in 2014 and has served as the Chairman since 2016. Bill holds a BA in International Relations from Michigan State University and a MA in National Security Strategic Studies from the United States Naval War College. Bill worked for U.S. Senator Mike Enzi from 2003-2007. A public affairs and

political consultant, Bill has worked for Wyoming Congresswoman Liz Cheney, Governors Matt Mead and Mark Gordon, Superintendent Jillian Balow among others as well as a community banker and petroleum land manager. He presently serves as Vice President of the Wyoming County Commissioners Association and is a graduate of the 2021 County Leadership Institute.

Luther Propst

First elected as a County Commissioner in 2018 in Teton County, Wyoming, Luther Propst has worked to balance smart growth in rural and mountain communities around the North American West for more than 35 years. In 1991, Luther established the Sonoran Institute and served as executive director until 2012, where he advanced effective community-based, collaborative, and innovative solutions for land and water management, working across private, state trust, and public lands, with special focus on the economic and social implications of land use decisions. Before founding the Sonoran Institute, Luther worked for World Wildlife Fund in Washington D.C., and practiced law with Robinson & Cole, where he represented local governments, landowners, and organizations nationwide in land-use matters. Luther received his law degree, masters in regional planning, and undergraduate degree from the University of North Carolina at Chapel Hill.

Shawn Regan

Shawn Regan is the vice president of research at the Property and Environment Research Center (PERC). He holds an M.S. in Applied Economics from Montana State University. His research has been published in journals such as Science, Natural Resources Journal, Utah Law Review, and Conservation Science & Practice, and his writing has appeared in popular outlets such as the New York Times, Wall Street Journal, Outside Magazine, Los Angeles Times, High Country News, National Review, Reason, Grist, and more.

Tara Righetti

Tara Righetti is the Occidental Chair in Energy and Environmental Policy at the School of Energy Resources and the Haub School of Environment and Natural Resources and a Professor in the College of Law. She is the co-director of the Nuclear Energy Research Center. Professor Righetti has served as a member of the U.S. Technical Advisory Group to ISO TC-265- Carbon Dioxide Capture, Transportation, and Geologic Storage since July of 2022. She previously directed the Professional Land Management concentration from January 2016 to August 2020. Prior to joining the University of Wyoming in the fall of 2014, she served in legal and executive roles in a privately owned upstream oil and gas company. Professor Righetti's research focuses on subsurface property law and administrative regulation of energy development and industrial decarbonization technologies including nuclear energy and carbon capture and storage.

Robyn Sahid

Robyn Sahid was appointed by Governor Katie Hobbs to serve as the 22nd Commissioner of the Arizona State Land Department (ASLD). She is an experienced economic developer with nearly 20 years of



service in the public sector, a majority spent with the City of Phoenix Aviation and Economic Development Departments. Most recently, Robyn served as the Chief Economic Development & Land Use Officer for Mayor Sam Liccardo in San Jose, CA.

Robyn serves as the State Cartographer and serves as the Co-Chair of the Governor's Military Affairs Commission. Additionally, she serves as a member of the State Parks Board, the Oil and Gas Conservation Commission, the Arizona State Board on Geographic and Historic Names and the Governor's Water Augmentation Council. She holds a Bachelor's Degree in Political Science from UCLA and a Master's Degree in International Relations from the University of San Diego. Robyn lives in North Scottsdale with her husband, daughter and a very needy Miniature Australian Shephard named Brew.

Temple Stoellinger

Temple Stoellinger is an associate professor and Wyoming Excellence Chair at the University of Wyoming with a dual appointment in the Haub School of Environment and Natural Resources and the College of Law. Her scholarship integrates thinking from the fields of law, economics, policy, and more to explore relevant and timely approaches for decision-making around wildlife, land, energy, and other valued natural resources. Before joining the University of Wyoming, Professor Stoellinger served as a natural resource advisor to Wyoming Governor Dave Freudenthal, worked as legal counsel for Shell International B.V., and served as natural resource counsel for the Wyoming County Commissioners Association. She currently serves as an elected Trustee to the Foundation for Natural Resources and Energy (FNREL), is a member of the ABA SEER NR&E Editorial Board, and is a co-chair of the ABA SEER Biodiversity Committee. She is also a Senior Fellow with the Property Environmental Research Center, and an Adjunct Faculty member with the School of Energy Resources.

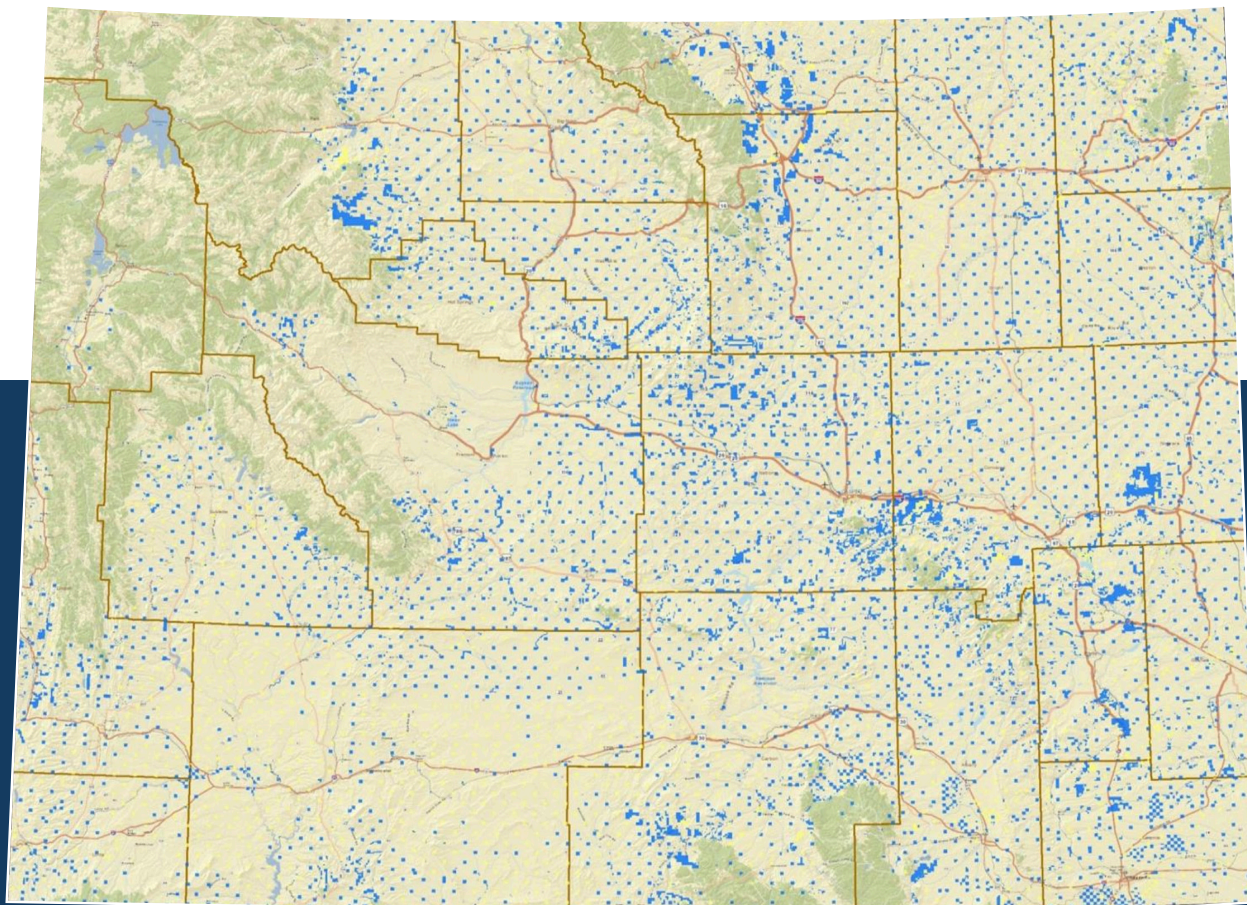
Ryan Weiss

Ryan is a deputy administrator at Montana's Department of Natural Resources & Conservation, where he manages state trust lands to benefit public schools and state institutions for current and future generations. He began his land and water resources career in consulting, working on post-fire watershed, floodplain and stormwater management, after earning graduate degrees in planning and water resources at the University of New Mexico. He has also served the State of Montana as a land agent, science program supervisor and bureau chief. Ryan is driven by the trust lands mission and a passion for exploring Montana's mountains and rivers.



STATE TRUST LAND

AN EMERGING ISSUE FORUM



Your feedback matters.

Please take our short, post-event survey so we can keep improving future forums: <https://forms.office.com/r/bHTh8TXLi8>

RUCKELSHAUS INSTITUTE
HAUB SCHOOL OF ENVIRONMENT AND NATURAL RESOURCES | UNIVERSITY OF WYOMING
(307) 766-5080 | ruckelshaus@uwyo.edu | uwyo.edu/ruckelshaus