



# Pilot Hill Case Study

## Isaac Bartlett and Bree Clausen

### University of Wyoming



## Background

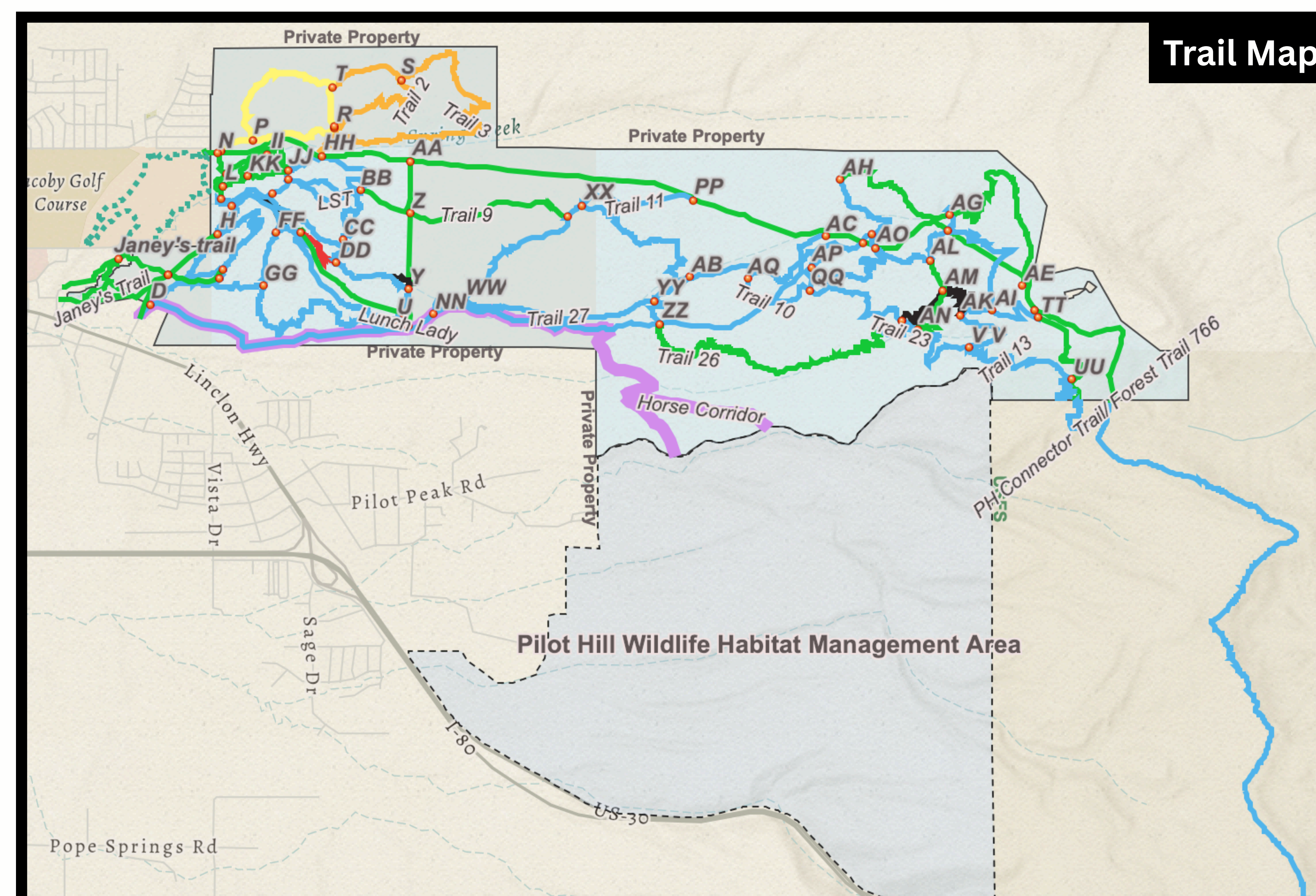
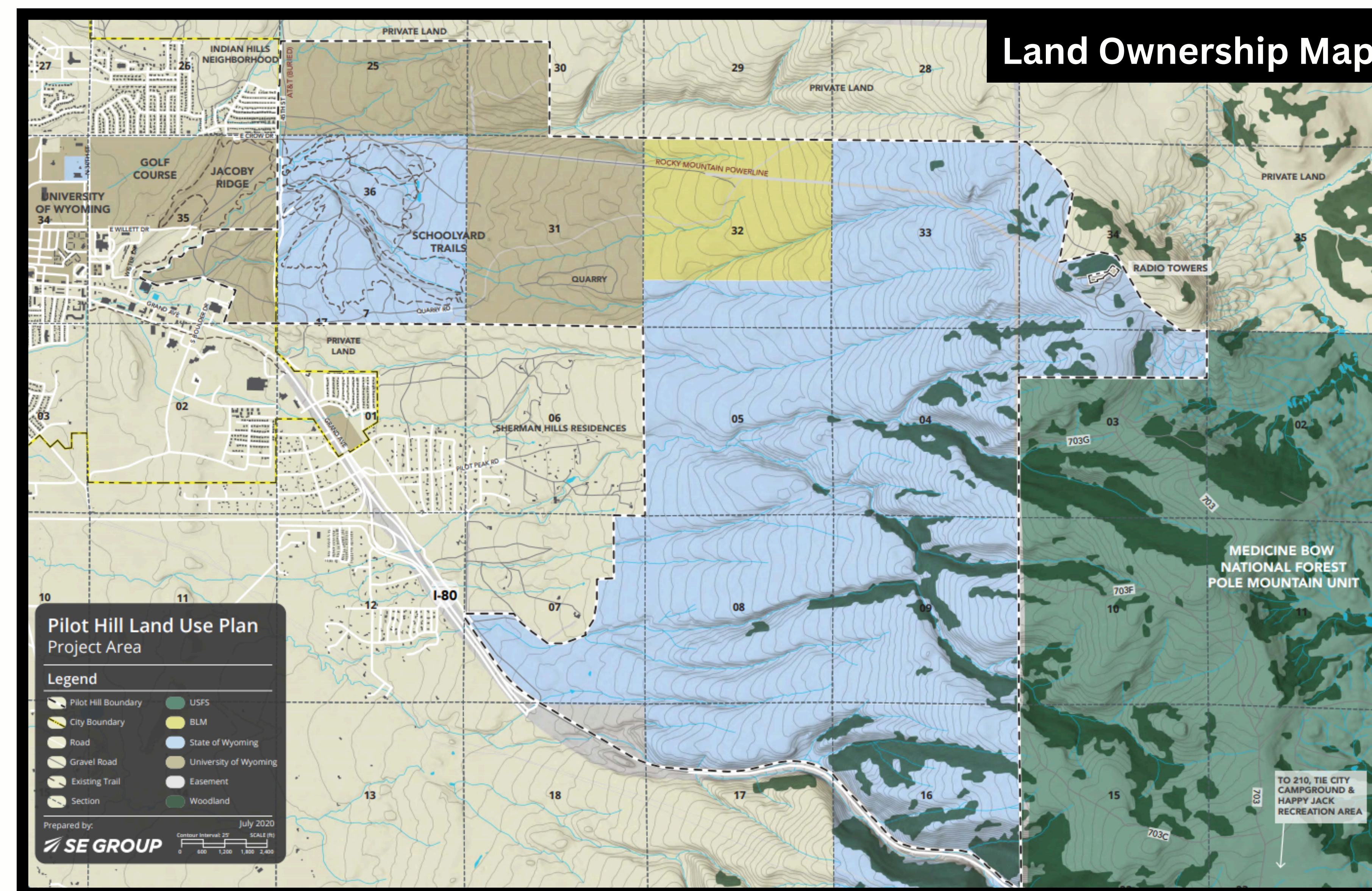
Pilot Hill is a unique recreation area. It was born out of community collaboration and action. It is one of the first State Trust land recreation leases in Wyoming and has created many benefits for the people of Laramie. It continues to inspire communities around Wyoming to utilize State Trust land for recreation purposes. It is still a work in progress and will hopefully someday allow southeast Wyoming to become a hotspot for recreation.

## Thesis Statement

Community involvement in recreation areas is becoming increasingly prevalent. There was not a framework for the establishment of Pilot Hill. We interviewed several stakeholders to thoroughly understand the process in order to point other communities in the same direction.

## Statistics

- \$1.2 million value added to economy
- Supports at least 150 local jobs
- 150,000 visits annually
- 45,000 non-local visits annually
- \$15 million land worth
- \$42,000 + 2.38% lease per year
- 3,076 Acres of wildlife habitat
- 4,010 Acres of recreation
- 82% community vote of approval



**“ALL THE TRAILS LEAD TO LARAMIE”**

## Methods

The Pilot Hill Project is ever changing. In order to obtain the most up to date information available we interviewed local professionals as our main form of research. Interviews gave great nuance that cannot be found in writing.

## Takeaways

Although the project is unique, we believe it is generally repeatable. There are several characteristics that made the parcel a prime candidate for a recreation lease:

- Proximity to Laramie
- Position above the aquifer
- Lack of extractable minerals
- Engaged Community
- Collaboration Between State, University, and Private landowners

Pilot Hill has benefited the local community in several ways:

- Improved quality of life
- Increased local businesses traffic
- Increased land value

## Acknowledgements

**Richard Vercoe**  
University of Wyoming  
**Dewey Gallegos**  
Owner, Pedalhouse  
**Birch Malotky**  
Ruckelshaus Institute  
**Ian Hall**  
Local Mountainbiker

**Sarah Brown Matthews**  
Director, Pilot Hill Inc  
**Evan O'Toole**  
Former BikeNet President  
**Elise D'Alessandro**  
UW Outdoor Program  
*Pilot Hill Project Website*