

VOL. 24 ISSUE 1 • May 2025

CONTRACTS CHRONICLES

Official Newsletter of the University of
Wyoming Housing & Dining Contracts Department



WELCOME

You are receiving this email because you have successfully completed the 2025-2026 UW Housing & Dining Services contract. We are so excited to be a part of your college experience, and look forward to helping you succeed during your journey at UW.

The UW residence hall contract establishes a housing and dining contract for the entire academic year. No additional contract is required for the spring semester, as the completed contract is valid and binding for both fall and spring semesters. The [Housing & Dining Services Contract](#) is agreed to on completion of the online contract. First year students are required to live on-campus, per the [Board of Trustees New Student Live-In Policy](#). Convenient campus location, exceptional dining facilities, and a supportive live-in staff are all reasons many students elect to return year after year to the halls.



UW

Housing

IN THIS ISSUE:

Your look at UW
Housing & Dining
PAGE 01 - 02

Where will I live
in the Residence
Halls?
PAGE 03

Which Hall is best
for me?
PAGE 03

Room Allocation
Overview
PAGE 04

Contracts Timeline
PAGE 04

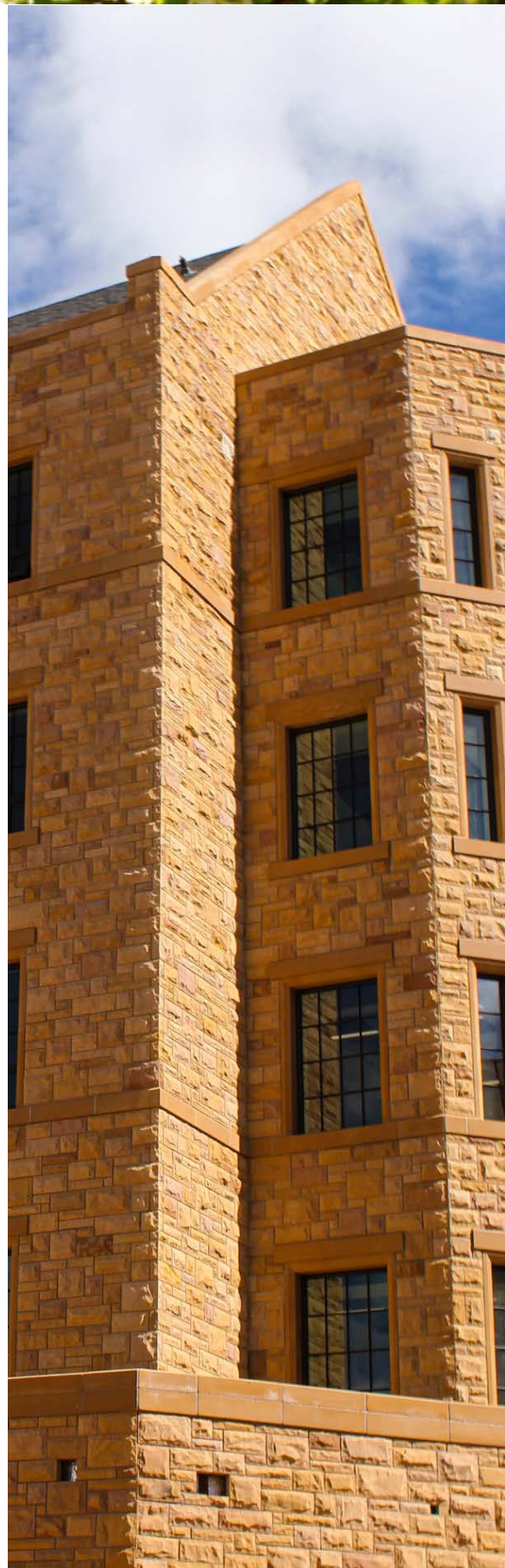


RESIDENCE LIFE

Our live-in staff is second to none! Each community has its own full-time live-in Residence Coordinator (RC). The RC oversees the building Resident Assistant (RA) staff. RAs are student leaders within the residence halls and are responsible for the development of a community atmosphere to help residents gain a sense of pride and ownership in their living environment. RAs are a live-in resource for any questions or concerns that residents may have during their living experience. Don't hesitate to reach out to the RAs on your floor or the RC of your building, as they look forward to getting to know you!

DINING CENTER INFORMATION

A Dining Center meal plan is required of all hall residents. Initial meal plan selection is completed as part of the online housing application. A new Dining Center opens in the Fall of 2025 and is the centerpiece of the residential dining program and social hub of the residence halls. Designed as a marketplace-style dining facility, multiple serving platforms provide a variety of options, depending on your dietary needs. Our friendly staff strives to create and rotate new menu items often, as well as host special dinners throughout the year. Vegan and vegetarian options can be found at almost every serving platform and Gluten Friendly options are also available. Have special dietary needs? Please reach out to [Jesse Reece, Assistant Director of Dining Support Services](#). Jesse can answer your specific dining questions and help address your individual needs. More information about our dining program will be shared in the June edition of Contracts Chronicles.





WHERE WILL I LIVE IN THE RESIDENCE HALLS?

As you completed your housing contract, you had the option to select from a wide range of [Living Learning Community \(LLC\)](#) options. Choosing to participate in an LLC surrounds you with others who have similar interests, identities, or academic aspirations. College success is more than getting good grades; it's about getting involved with the things that matter to you!

Students accepted to a Living Learning Community (LLC) will be living on their designated LLC floor. Participating in an LLC offers a ready-made study group of people who are taking many of the same classes as you! Your floor RA will share the same interest, and you will enjoy floor activities geared toward your community. Depending on your LLC selection, you may benefit from early class enrollment.

WHICH HALL IS BEST FOR ME?

Exciting changes are happening this fall in our residence halls! North Hall is scheduled to open in August as a brand-new living option at UW. A new Dining Center, also located in North Hall, will open this fall (more about this next month). Students assigned to McIntyre Hall in the Fall semester will be relocated to South Hall, opening for the Spring 2026 semester. White Hall (always a favorite!) will welcome and house 12 floors of students.

Each of our Residence Halls (McIntyre/South Hall, White Hall, and North Hall) are home to a wide variety of Living Learning Communities (LLCs). Most rooms are double occupancy, with a limited number of small twin single and suite-style rooms. Placement in a room other than double occupancy is based on any accommodation needs and application completion date. We recommend students check out the [LLC Community Options](#) to learn more about the different community options and tentative placement location in the residence halls. The LLC floor layout is subject to change prior to room placement.

For information regarding different room types and sizes (Standard Double Room, Small Twin Single Room, Suite-Style Rooms), please see our [Traditional Halls webpage](#) and [North/South Hall webpage](#). *(Note: Single Rooms and Suite-Type Rooms are available on a very limited basis. Housing cannot guarantee that you will be placed in either of these room types.)*

The [Tobin House](#) is home to Honors College Students. If interested in the Tobin House, an additional, separate application is required and can be found [HERE](#). This small and unique living option offers a close-knit community of approximately 60 students and is bolstered with faculty support from the [Honors College](#).



ROOM ALLOCATION OVERVIEW

Room assignments for the 2025-2026 Academic Year will be determined through an allocation process managed by the Housing office. Your responses to the questions in the housing application will play a critical role in how you are assigned a room. The allocation will be based on the following factors, prioritized in the order listed:

1. **Completion Date of Housing and Dining Application:** The earlier you submit your completed application, the better your chances of securing your preferred room.
2. **Type of Room Requested:** The type of room you request (e.g., single, suite, double, etc.) will be considered. Most rooms are double occupancy, so you should plan on having a roommate.
3. **Room Rate Preference:** The double and single rooms in North Hall, the new residence hall opening for Fall 2025, will have a higher rate. You will be asked whether you do NOT wish to be assigned a room at this higher rate.
4. **Self-Selected Roommates:** If you have selected a roommate, both students must confirm this choice. *Note: Roommate preferences are prioritized, so if your selected roommate is in a different Living Learning Community (LLC), it may affect your room allocation.*
5. **Living Learning Community (LLC) Assignment:** Room allocations are based on your top three LLC preferences. If you have selected a roommate, both of you must be in the same LLC or one of you must select 'No Preference' as the LLC choice. If the LLC you selected is full, your roommate preference may not be met. If your primary priority is getting into your preferred LLC, please notify the Housing Office, but be aware that you may not be assigned with your selected roommate.

IMPORTANT NOTES:

- If you have a preferred roommate, you should either have the same LLC selection or one of you needs to select no preference as the LLC choice.
- Students assigned to McIntyre Hall are expected to move to South Hall between the fall and spring semesters. The LLCs assigned to McIntyre will be reallocated to South Hall. More information will be provided late in the fall semester.

CONTRACTS TIMELINE, 2025

July 17:

Last day to make a roommate selection within your housing application.

July 25:

Room Notification Emails Sent ... check your UW email! This will include your hall and room number (that you selected or were assigned to), mailing address, roommate name & contact information, and selected meal plan.

August 15:

Saddle Up Move-In Day! First year students will move in to participate in this college introductory program. An additional room and meal plan charge will apply for the Saddle Up program. Watch your email in August for detailed move-in instructions.

August 23:

Returner Move-In Day & Academic Year Housing Contract Begins.

August 25:

Classes Begin.

September 1:

No Classes; Labor Day Holiday.

September 12:

Last Day to Change Meal Plan for the Fall Semester.