



University Facilities Improvements 2005 – Present

UW Board of Trustees Meeting
November 18, 2011



UNIVERSITY OF WYOMING



Construction Start: Spring 2005

Construction Complete: Oct. 2006

Square Ft. New: 30,000

Square Ft. Renovated: NA

Total Budget: \$12M

Occupants: The Wyoming Technology Business Center (WTBC) is a business development program that focuses on high-growth oriented companies with an emphasis on technology at the University of Wyoming. The business incubator provides space, access to shared services and business and management advice for early stage, high-growth companies.

Wyoming Technology Business Center (WTBC)





Construction Start: Sept. 2005

Construction Complete: March 2007

Square Ft. New: 17,225

Square Ft. Renovated: 78,836

Total Budget: \$14.64M

Occupants: Central Classroom Facility, Central Scheduling, student lounge, Elements Cafe, and student study rooms.

Classroom Building



Construction Start: February 2007

Construction Complete: December 2007

Square Ft. New: 83,759

Square Ft. Renovated: NA

Total Budget: \$10.9M

Occupants: Football and Soccer indoor practice field. Indoor field has same turf and configuration as Jonah Field.



Indoor Practice Facility



Construction Start: August 2006

Construction Complete: January 2008

Square Ft. New: 13,000

Square Ft. Renovated: NA

Total Budget: \$8.2M



UW Conference Center





Construction Complete: July 2008

Square Ft. New: 53,500

Square Ft. Renovated: NA

Total Budget: \$16M

Occupants: Department of Anthropology and Archaeology
State Archaeologist, Cultural Records section of the State Historic Preservation office, The Frison Institute & The State Archaeological Repository.

Anthropology





Construction Complete: August 2008

Square Ft. New: 5,451

Square Ft. Renovated: NA

Total Budget: \$2.55M

Occupants: The intent of the facility is to provide honor students the opportunity to be housed with students with similar goals and work ethics concerning their academic endeavor

Honors House





Construction Start: June 2007

Construction Complete: January 2009

Square Ft. New: 86,664

Square Ft. Renovated: NA

Total Budget: \$34.9M

Occupants: Information Technology, UW central computer center, 24 hours student computer lab, communications and computer support.

Information Technology





Construction Start: July 2008

Construction Complete: May 2009

Square Ft. New: 1,800

Square Ft. Renovated: 7,200

Total Budget: \$2.5M

Police Facility





Construction Start: November 2006

Construction Complete: Aug. 2009

Square Ft. New: 98,876

Square Ft. Renovated: 117,473

Total Budget: \$49.3M

Occupants: University Libraries, 24 hour student computer lab, Book & Bean.

Information Library/Learning Center ILLC (Coe)





Construction Start: August 2008

Construction Complete: August 2009

Square Ft. New: 4,342

Square Ft. Renovated: NA

Total Budget: \$4.9M

Occupants: Moot Court and classroom, technology rich. Capable of holding all court proceedings including Supreme Court.

Special Note: LEED Silver equivalent

College of Law — Moot Court



Construction Start: January 2009

Construction Complete: August 2009

Square Ft. New: 1,440

Square Ft. Renovated: 15,000

Total Budget: \$3.25M

Occupants: International Programs,
International Student Center.

Cheney International Center & Plaza





Construction Start: Sept. 2009

Construction Complete: May 2010

Square Ft. New: 2,237

Square Ft. Renovated: 3,930

Total Budget: \$1.8M

Occupants: Haub School of Environment & Natural Resources, Ruckelshaus Institute of Environment & Natural Resources, Wyoming Conservation Corps.

Special Note: LEED Gold pending.

Bim Kendall House





Construction Start: June 2008

Construction Complete: June 2010

Square Ft. New: 126,426

Square Ft. Renovated: 60,000

Total Budget: \$57.6M

Occupants: Dean's Office, Business Administration, Accounting, Economics & Finance, Management & Marketing, Student advising, Johnson Career Center.

Special Note: LEED Gold Certified

College of Business





Construction Start: March 2009

Construction Complete: Sept. 2010

Square Ft. New: 32,600

Square Ft. Renovated: NA

Total Budget: \$27.5M

Occupants: Special Game Day Suites - 12, Stadium Club seating 250. New concessions and restrooms. Structural repair of east stadium. ADA accessibility.

Wildcatter Suites
(War Memorial Stadium)





Construction Start: May 2010

Construction Complete: December 2010

Square Ft. New: NA

Square Ft. Renovated: 2,650

Total Budget: \$1.0M

Occupants: Education student lounge,
significant art piece in the form of a Wyoming
relief map.

Sullivan Family Center & Literacy Center (Education Annex)





Construction Start: Sept. 2009

Construction Complete: January 2011

Square Ft. New: 40,847

Square Ft. Renovated: NA

Total Budget: \$20.0M

Occupants: Program in Ecology, Vertebrate Collections, Wyoming Natural Diversity Data Base, Nucleic Acid Lab, Stable Isotope Lab, Macromolecular Core Facility, Lecture Hall.

Special Note: LEED Gold pending

Berry Biodiversity Conservation Center



Deconstruction Start: March 2010

Deconstruction Complete: January 2011

Square Ft. New: See Bison Run Village

Square Ft. Removed: 230,935

Total Budget: \$2.4M

Summit View Deconstruction



Construction Start: August 2010

Construction Complete: March 2011

Square Ft. New: 39,186

Square Ft. Renovated: 17,000

Total Budget: \$4.15M

Occupants: 6 indoor courts, Tennis team room, locker room, facility offices.

Special Note: LEED Silver equivalent

Indoor Tennis Facility





Construction Start: June 2010

Construction Complete: July 2011

Square Ft. New: NA

Square Ft. Renovated: 85,361

Total Budget: \$6.0M

Occupants: Student Residence Hall

Downey Hall Renovation





Construction Start: May 2011

Construction Complete: Sept. 2011

Total Budget: \$2.3M

East Stadium Parking Lot



Construction Start: June 2011

Construction Complete: Nov. 2011

Total Budget: \$1.2M



South Shuttle Parking Lot



Construction Start: October 2010

Construction Complete: December 2011

Square Ft. New: 77,763

Square Ft. Renovated: NA

Total Budget: \$36.35M

Occupants: Art Department including art, art history, ceramics, sculpture, print making, graphic design and fine metals.

Special Note: LEED Platinum anticipated



Visual Arts Facility



Construction Start: July 2011

Construction Complete: August 2012

Square Ft. New 105,000

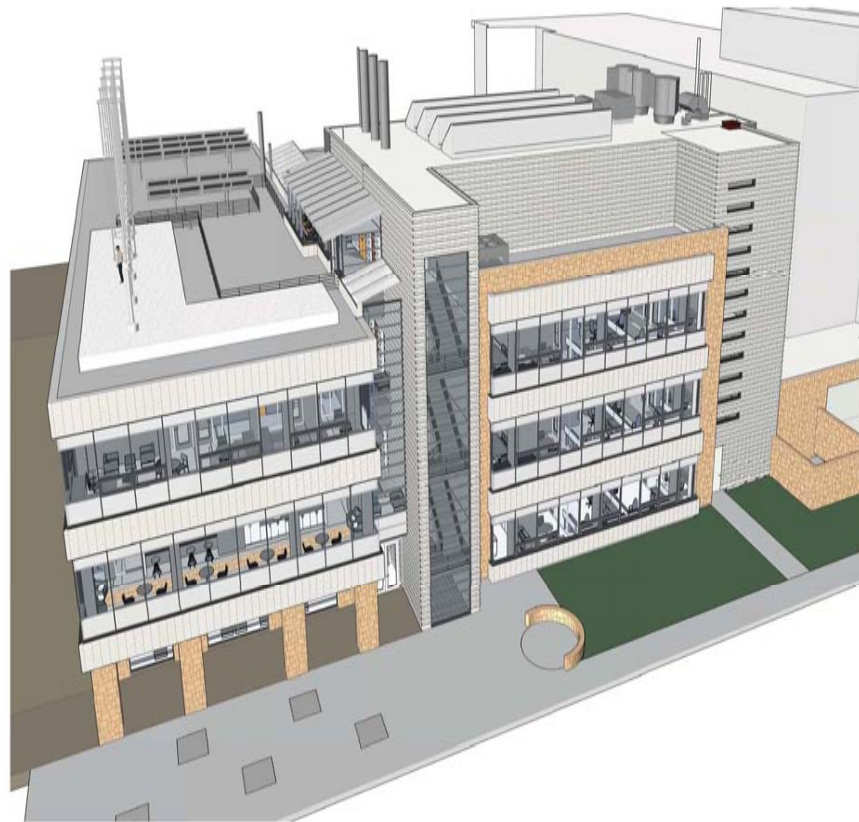
Square Ft. Renovated: NA

Total Budget: \$18M



Bison Run Village





① Perspective Aerial Northwest

Construction Start: June 2011

Construction Complete: Sept. 2012

Square Ft. New: 56,941

Square Ft. Renovated: NA

Total Budget: \$25.4M

Occupants: School of Energy Resources, Enhanced Oil Recovery Institute, Clean Coal Technology, and flexible research laboratories.

Special Note: LEED Platinum anticipated

Energy Resources Center





SCHEMATIC PERSPECTIVE
NORTH EAST QUAD

Construction Start: Anticipated summer 2012

Construction Complete: 2012

Occupants: Located in northeast corner of Prexy's Pasture. One of four corners per Prexy's Pasture Master Plan.

Special Note: Design Agreement pending.

Sullivan Plaza



Construction Start: Spring 2012

Construction Complete: December 2013

Square Ft. New: 48,000 (UW Only)

Square Ft. Renovated: NA

Total Budget: \$16M



UW/Casper College





Construction Start: Fall 2012 or Spring 2013

Construction Complete: NA

Square Ft. New: 99,600

Square Ft. Renovated: NA

Total Budget: \$50.0M AML Funds

Occupants: Life Science, Chemistry, Mathematics, Engineering, wet and dry labs, computational labs and lab support for undergraduate level laboratory based courses.

Special Note: Level I completed October, architect selection is complete and negotiations are underway. Notice to proceed with Level II design in December.

Enzi Class Laboratories





Foundation House Purchase Date:
October 1982

Renovated: 1985

Square Ft.: 4,936

Square Ft. Renovated: 5,504

Occupants: Seven divisions of University Foundation.

Special Note: Proposed location for the new Center for External Relations building is at Grand Avenue and 22nd Street.

Center for External Relations



Construction Start: June 2012

Special Note: The Performing Arts project will include a major renovation and addition. Design documents are under development using a \$2.6 million appropriation provided in the 2011 legislative session. In addition, a request of \$32 million for Level 3 (construction) was UW's highest priority in the 2013-2014 capital budget.



Performing Arts



Construction Start: Pending Funds
Early Summer 2012

Construction Complete: Fall 2013

Square Ft. New: 99,308

Square Ft. Renovated: 40,530

Total Budget: \$27.0M

Occupants: UW Recreation, Wellness,
Kinesiology, Theatre & Dance

Special Note: Primarily a Student
Recreation and Wellness Center but also
includes academic classrooms. This would
be the last of three buildings to complete
the student plaza the other two buildings
being the Library and the Union.



Half Acre





Construction Start: 2014

Construction Complete: 2015

Occupants: School of Engineering and Applied Science

Special Note: Level 1 Study in progress including entire College of Engineering and Applied Science. Level II funding request, pending approval by State Of Wyoming.

Engineering Building



	Project (Chronology as completed)	Completion Date	Square Footage Completed/Renovated	Project Cost
1	Wyoming Technology Business Center (WTBC)	Oct. 2006	30,000	\$12M
2	Classroom Renovations	Mar. 2007	96,061	\$14.6M
3	Indoor Practice Facility	Dec. 2007	83,759	\$10.9M
4	UW Conference Center	Jan. 2008	13,000	\$8.2M
5	Anthropology	July 2008	53,500	\$16M
6	Honors House	Aug. 2008	2,340	\$2.5M
7	Information Technology	Jan. 2009	86,664	\$34.9M
8	Sustainable Agriculture R & E Center Lab & Residence (SAREC)	Jan. 2009	3,132	\$1.5M
9	Police Facility	May 2009	9,000	\$2.6M
10	Information Library and Learning Center (Coe)	Aug. 2009	210,349	\$49.3M
11	College of Law Moot Court	Aug. 2009	4,342	\$4.9M
12	Cheney International Center & Plaza	Aug. 2009	16,440	\$3.2M
13	Bim Kendall House	Sept. 2009	6,167	\$1.8M
14	College of Business	June 2010	186,426	\$57.6M
15	Wildcatter Suites (War Memorial Stadium)	Sept. 2010	32,600	\$27.5M

UW Projects – 2005 - 2013



	Project (Chronology as completed)	Completion Date	Square Footage Completed/Renovated	Project Cost
16	Sullivan Family Center and Literacy Center (Ed. Annex)	Dec. 2010	2,650	\$1.0M
17	Robert & Carol Berry Biodiversity Conservation Center	Jan. 2011	40,847	\$20.0M
18	Summit View Deconstruction	Jan. 2011	230,935 Removed	\$2.4M
19	Indoor Tennis Facility	March 2011	39,186	\$4.15M
20	Downey Hall, McIntyre Hall, Orr Hall Renovations	July 2011	302,948	\$14.6M
21	East Stadium Parking Lot	Sept. 2011	NA	\$2.3M
22	South Shuttle Lot	Oct. 2011	NA	\$1.3M
23	Visual Arts Facility	Dec. 2011	77,763	\$36.4M
24	Bison Run Village	Aug. 2012	105,000	\$17.2M
25	Energy Resources Center	Sept. 2012	56,941	\$25.4M
26	Sullivan Plaza	Sept. 2012	NA	\$700K
27	UW/ Casper College Joint Facility	December 2013	48,000 (UW Only)	\$16.0M
28	Enzi Class Laboratories	Fall 2013	99,600	\$50.0M
29	White Hall	Fall 2013	132,054R	\$14.0M
30	Center for External Relations	Summer/ Fall 2013	Approx. 35,000	\$20.0M
31	Performing Arts	Fall 2013	52,000N/90,000R	\$35.0M
32	Infrastructure/LRDP	Fall 2014	NA	\$30.0M
33	Half Acre	Fall 2013	99,308N/40,530R	\$27.0M
34	Engineering Building	Fall 2015	TBD	TBD
<i>Project list does not include NCAR or BSL-3 facilities.</i>		Total:	1,824,672	\$564.95M

UW Projects – 2005 – 2013 Cont.