

**THE UNIVERSITY OF WYOMING**  
**BOARD OF TRUSTEES' REPORT**  
**May 2-4, 2012**

**The Final Report can be found on the University of Wyoming Board of Trustees website at  
<http://uwadmnweb.uwyo.edu/trustees>**

## **University of Wyoming Mission Statement (March 2009)**

The University of Wyoming aspires to be one of the nation's finest public land-grant research universities. We serve as a statewide resource for accessible and affordable higher education of the highest quality; rigorous scholarship; technology transfer; economic and community development; and responsible stewardship of our cultural, historical, and natural resources.

In the exercise of our primary mission to promote learning, we seek to provide academic and co-curricular opportunities that will:

- Expose students to the frontiers of scholarship and creative activity and the complexities of an interdependent world;
- Ensure individual interactions among students, faculty, and staff;
- Nurture an environment that values and manifests diversity, free expression, academic freedom, personal integrity, and mutual respect; and
- Promote opportunities for personal growth, physical health, athletic competition, and leadership development for all members of the University community.

As Wyoming's only university, we are committed to outreach and service that extend our human talent and technological capacity to serve the people in our communities, our state, the nation, and the world.

The primary vehicles for identifying the specific actions and resource allocations needed to accomplish this complex mission are the University's strategic plans, revised periodically.

**TRUSTEES OF THE UNIVERSITY OF WYOMING AGENDA**  
**May 2-4, 2012**

**WORK SESSIONS**

UW and LCCC Discussions, Richards .....	1
Engineering Complex, Richards/Blalock/Hansen/Collins.....	2
FY 2013 Operating Budget and 2013-2014 Biennium Budget, Lowe/Richards.....	5
Biodiversity Initiative Update, Allen.....	7
Geological Museum Update, Allen (guest Mark Clementz to present).....	9
Capital Construction, Collins	
a. White Hall Asbestos and Regulated Material Abatement .....	10
b. White Hall Renovation – Design-Bid-Build.....	11
c. Buildings Sale and Removal – 1015 Lewis, 460 N. 11 <sup>th</sup> , 462 N. 11 <sup>th</sup> (on Michael B. Enzi STEM Facility Site) .....	13
d. Building Sale and Removal – Greenhouse on NW corner of 22 <sup>nd</sup> and Grand (at Gateway Center Site) .....	16
Revenue Bond Reimbursement Resolution, Lowe .....	18
Gateway Center Update, Blalock.....	24

**BUSINESS MEETING**

**Roll Call**

**Approval of Board of Trustees Meeting Minutes**

March 22-24, 2012

**Approval of Executive Session Meeting Minutes**

March 22-24, 2012

**Election of Officers**

Committee Appointments

**Reports**

ASUW

Staff Senate

Faculty Senate

**Public Testimony**

**Committee of the Whole**

**REGULAR BUSINESS**

1. Board Committee Reports..... 25
  - A. Academics and Research (Allen) – Trustee Palmerlee, Committee Chair
  - B. Fiscal and Legal Affairs (Lowe/Collins) – Trustee Davis, Committee Chair
  - C. Student Affairs/Athletics/Administration/Information Technology (Axelson)  
Trustee Mead, Committee Chair
  - D. Alumni Board – Trustee Lauer, Board Liaison

- E. Foundation Board – Trustees Davis and Bostrom, Board Liaisons
- F. Ruckelshaus Institute of Environment and Natural Resources (RIENR) Board  
Trustee Davis, Board Liaison
- G. Energy Resource Council (ERC) – Trustee Palmerlee, Board Liaison

**CONSENT AGENDA**

1. Approval of Contracts and Grants, Gern .....	26
2. Personnel, Allen.....	33
3. Master List of Degrees, Allen.....	57
4. ASUW Constitution Revisions, Axelson.....	66
5. Approval of Recommendation for Deputy Treasurer of the Board of Trustees, Buchanan.....	74
6. Capital Construction, Collins.....	75
a. White Hall Asbestos and Regulated Material Abatement	
b. White Hall Renovation – Design-Bid-Build	
c. Buildings Sale and Removal – 1015 Lewis, 460 N. 11 <sup>th</sup> , 462 N. 11 <sup>th</sup> (On Michael B. Enzi STEM Facility Site)	
d. Building Sale and Removal – Greenhouse on NW corner of 22 <sup>nd</sup> and Grand (at Gateway Center Site)	
7. FY 2013 Operating Budget & 2013-2014 Biennium Budget, Lowe/Richards..	75
8. Revenue Bond Reimbursement Resolution, Lowe .....	75
9. Appointments to the University of Wyoming Research Corporation (d.b.a. WRI) Board of Directors, Gern .....	76
10. Approval of Real Estate Acquisitions, Collins .....	78

**New Business**

2012-2015 Trustee Meeting Schedules

**Date of Next Meeting** – July 18-20, 2012; Gillette, Wyoming

**Adjournment**

---



---

**Information Only Items (see tab):**

1. Progress Report/Change Orders, Collins/Lowe.....	79
2. State Matching Funds for Endowments, Buchanan.....	82
3. Development Report, Blalock.....	83

---



---

**AGENDA ITEM TITLE: UW and LCCC Discussions, Richards**

**CHECK THE APPROPRIATE BOX(ES):**

- Work Session
- Education Session
- Information Item
- Other            Specify:

The intent of this agenda item is for the Trustees to be briefed by UW and Laramie County Community College (LCCC) staff on the exploration and planning of enhanced partnerships. Don Richards is expected to be joined by LCCC's new President, Joe Schaffer, Albany County Campus Dean, Lynn Stalnaker, and one or more members of the Albany County Advisory Board.

**BACKGROUND AND POLICY CONTEXT OF ISSUE:**

During both the 2011 and 2012 Legislative Sessions, UW and LCCC forwarded appropriations requests for a Level II study for a Joint LCCC-UW facility in Cheyenne. Both requests were not successful. Additionally, UW has earmarked physical space within its Long Range Development Plan (LRDP) for an LCCC-Albany County facility on UW's campus, should they so choose. The proximity would recognize the increasingly strong relationship and the number of students enrolled at both institutions simultaneously or sequentially.

**PRIOR RELATED BOARD DISCUSSIONS/ACTIONS:**

January 2012 – The UW Board of Trustees joined several LCCC Trustees and administrators from Cheyenne and LCCC-Albany County administrators and Advisory Board members for lunch and discussion.

**WHY THIS ITEM IS BEFORE THE BOARD:**

The purpose of this informational discussion is to introduce newly appointed LCCC President Joe Schaffer to the UW Board of Trustees and discuss next steps in terms building and enhancing the UW-LCCC relationship.

**ACTION REQUIRED AT THIS BOARD MEETING:**

None

**AGENDA ITEM TITLE: Engineering Complex, Richards/Blalock/Hansen/Collins**

**CHECK THE APPROPRIATE BOX(ES):**

- Work Session
- Education Session
- Information Item
- Other            Specify:

The intent of this agenda item is for the Trustees to be briefed by administrators from UW's offices of Facilities Planning, Academic Affairs, Foundation, and Government Relations regarding the timeline and planning expectations for a remarkable opportunity to enhance the facilities associated with the College of Engineering and Applied Science.

**BACKGROUND AND POLICY CONTEXT OF ISSUE:**

During the 2012 legislative session, the University of Wyoming requested \$1.25 million for Level II planning for the renovation and expansion of the College of Engineering and Applied Science (CEAS) Building. The Legislature appropriated \$1.15 million for such planning.

In the 2012 session, the Legislature also appropriated \$30 million in state funding to be matched by \$30 million in private donations as the first step toward funding the renovation and expansion of the CEAS Building. Simultaneously, the CEAS and the School of Energy Resources (SER) have been cooperating in the planning for a new Energy and Engineering Research Center (EERC). Some of the labs contemplated in such an effort may be included in an expansion of the CEAS, others may require separate space.

During the 2012 session, the Legislature also appropriated \$15 million in AML funds to SER to be matched by \$15 million in private donations. A portion of these funds may be used to build, equip, or staff the EERC.

The Level II work for all facilities (renovations and expansions) will be conducted concurrently, on two parallel tracks, with funding for the EERC study to be derived from SER's budget and funding for the CEAS expansion and renovation to come from the above appropriation.

In addition, the Legislature adopted the following language in 2012 Session Laws, Chapter 27, Section 1(e):

- (e) The joint minerals, business and economic development interim committee, in consultation with the governor, the college of engineering, the school of energy resources at the University of Wyoming and the community college commission, shall:
  - (i) Assist in the development of the parameters for the renovation and reconstruction plan for the college of engineering at the University of Wyoming, which plan shall be designed in cost and approach to lead the university toward a

tier one academic and research institution in areas of excellence appropriate for Wyoming. It is anticipated that the budget for the project will approximate one hundred million dollars (\$100,000,000.00) or so much as is reasonably needed to accomplish this task;

(ii) Develop a plan for the use of an appropriate amount of anticipated remaining abandoned mine land funds to fund programs that support and enhance new and existing technologies important to the economy of Wyoming. The programs may include grants and equipment purchases that will recruit and retain innovative research and technological advances with a goal to create sustainable jobs and economic development along with improving the prestige and quality of teaching at the college of engineering and community colleges.

This language not only anticipates the total project cost, but identifies an aspirational goal for the CEAS and its relevance to Wyoming's economy and workforce.

A draft Level I study for the Engineering Complex will be completed by May 2012. In May 2012, UW will begin soliciting requests for qualifications (RFQ) for architectural services to complete the two-track, Level II study, as described above. UW will also begin outreach with the Joint Minerals, Business and Economic Development Interim Committee, the Governor's Office, alumni, employers of UW graduates, industry partners, potential donors, the College of Engineering and Applied Science Advisory Board, the Energy Resources Council, and other interested policymakers and constituents during the summer of 2012.

#### **PRIOR RELATED BOARD DISCUSSIONS/ACTIONS:**

The Trustees discussed the Engineering College renovation and expansion as part of the July 2011 and August 2011 budget development. The Board received a briefing on this topic during the legislative update at its March 2012 meeting.

#### **WHY THIS ITEM IS BEFORE THE BOARD:**

To develop a proposal with sufficient detail to support further action in the 2013 Wyoming Legislature, the UW administration and Board of Trustees will face a series of critical decisions during the remaining months of calendar year 2012.

The Trustees will be asked to select the design architect for the Level II study for this project in July 2012. The renovation and expansion of facilities related to the University of Wyoming College of Engineering and Applied Science is anticipated to be the largest capital construction project ever undertaken at UW. The magnitude of funding is likely to roughly double the next largest capital construction project. Furthermore, the interest from internal and external constituencies in the planning, financing, and development of a UW College of Engineering Complex is substantially broader and deeper than prior projects. For example, the College of Engineering and Applied Science Advisory Board, the Joint Minerals, Business, and Economic Development Interim Committee, the Governor's Office, the Joint Appropriations Interim Committee, the Energy Resources Council, the College of Engineering and Applied Science

faculty, staff, and students, the UW Foundation, private donors, industry, policy makers, the City of Laramie, and the Wyoming Community College Commission among others have interest in the facility. As a result, regular and timely updates to present timelines, consider plans, and receive feedback from the Board of Trustees are critical to a successful, clearly articulated plan.

**ACTION REQUIRED AT THIS BOARD MEETING:**

None



**AGENDA ITEM TITLE:**

**FY 2013 Operating Budget and 2013-2014 Biennium Budget, Lowe/Richards**

**CHECK THE APPROPRIATE BOX(ES):**

- Work Session  
 Education Session  
 Information Item  
 Other                      Specify: Committee of the Whole (Consent Agenda)

**BACKGROUND AND POLICY CONTEXT OF ISSUE:**

The Trustees of the University of Wyoming, a constitutional body, are responsible for the “management of the university” (Wyoming Constitution, Article 7, 17).

**2013-2014 Biennium, FY 2013 Budget Authority Approval**

**Section I:**

- 1) Agency 067:
  - a. University of Wyoming (block grant) and Brucellosis Research and Testing
  - b. National Center for Atmospheric Research (NCAR) Memorandum of Understanding
  - c. The School of Energy Resources
- 2) Agency 167: UW-Medical Education

This section contains the general operating budget of the University supported by appropriated funds, including state general funds, federal formula funds for the support of the College of Agriculture and Natural Resources, and other University funds (UW Income Fund, Sales and Services Fund, Clinic Income, Agricultural Land Income, University Land Income, and Federal Mineral Royalties), and unrestricted income from the University of Wyoming Foundation.

**Section II:**

This section contains the self-sustaining budgets of the University that are supported by sponsored funding for research and other activities (primary source is federal funds), income from University auxiliary operations (e.g., housing, residence halls, student union, parking, duplicating, concessions, etc.), gifts and contributions, student fees, and federal mineral royalties.

**Proposed Operating Budget:**

The proposed operating budget for FY 2013 has been prepared on the basis of the state general fund appropriations to the University for the 2013-2014 biennium, other state revenue sources such as UW Land Income Funds, and University funds, such as tuition and fees, that comprise the total operating budget to be approved by the Trustees. The revenues and expenditures supporting the proposed FY 2013 operating budget will be distributed in advance of the Board meeting.

Approval of the University’s FY 2013 budget incorporates the budget authority for ASUW, Student Media (formerly Student Publications) and the Wyoming Union. Note that the University of Wyoming serves as fiscal agent for the Enhanced Oil Recovery Commission, the

Western Interstate Commission on Higher Education (WICHE), Statewide Video Conferencing, and the Center for Distance Learning and Education; however, these funds are not included in the budget authorized by the Board of Trustees. The 2012 Legislature also authorized \$10.6 million of abandoned mine lands funds through the Wyoming Department of Environmental Quality to the School of Energy Resources for clean coal technology research, minerals to value added opportunities and study of the manufacture of glass. This funding is excluded from the University of Wyoming's operating budget as the Clean Coal Technology Task Force/Advanced Conversion Technology Task Force is a separate entity.

Within the overall University budget, units have the flexibility to transfer funds between expenditure categories, with the exception of grants and aid payments (B6000), as long as the transfers are consistent with the underlying requirements of the original revenue source. Over the course of the biennium, budget units have broadly defined authority to request budget transfers between expenditure categories and units. Transfer flexibility for Agency 167, UW-Medical Education, is restricted by and subject to approval of the state.

**PRIOR RELATED BOARD DISCUSSIONS/ACTIONS:**

The Trustees have had numerous discussions regarding the Section I and II operating budgets, including budget authority adjustments, the budget requests submitted to the state budget office for review and approval by the Governor and the Legislature, tuition and fees, the *Fee Book*, and other pertinent topics.

**WHY THIS ITEM IS BEFORE THE BOARD:**

The Board's approval of the operating budget is required by Trustee Regulations and University budget procedures.

**ARGUMENTS IN SUPPORT:**

The Section I operating budget has been prepared based on legislative appropriations and estimated University resources. The Section II operating budget has been prepared based on operating budget proposals submitted by auxiliary enterprise units, ASUW, Student Media, the Wyoming Union, the Athletic department, sponsored research, Agricultural Experiment Station, UW Extension Service and other university units operating under Section II funding. It has been reviewed by the President and other university officers as well as other interested parties, all of whom support the recommendation for approval.

**ARGUMENTS AGAINST:**

None

**ACTION REQUIRED AT THIS MEETING:**

Approval of non-General Fund carry forward amounts from FY 2012, and approval of planned revenues and expenditures contained in the operating budget of the University of Wyoming for the fiscal period beginning July 1, 2012 and concluding June 30, 2013.

**PRESIDENT'S RECOMMENDATION:**

The President recommends Board approval of the FY 2013 Operating Budget for the University of Wyoming (Agency 067) and UW-Medical Education (Agency 167), as described in this item.

**AGENDA ITEM TITLE: Biodiversity Initiative Update, Allen**

CHECK THE APPROPRIATE BOX(ES):

- Work Session
- Education Session
- Information Item
- Other           Specify:

The intent of this agenda item is to brief Trustees on an initiative to establish a Biodiversity Institute at the University of Wyoming. A working definition of the term “biodiversity,” a concept in the life sciences, is the totality of genes, species, and ecosystems in a region or in the world.

**BACKGROUND AND POLICY CONTEXT OF ISSUE:**

In 2011, President Buchanan charged a faculty task force with developing a proposal for an initiative that would advance biodiversity science at the University of Wyoming. The charge came on the heels of several related events, including the opening of the Berry Biodiversity Conservation Center and a visiting lecture by Professor E.O. Wilson of Harvard University.

The task force, coordinated by Vice President for Special Projects Carol Frost and including faculty members from three colleges and a wide array of disciplines, proposed the establishment of an interdisciplinary Biodiversity Institute. The task force noted a remarkable set of institutional assets to support such an institute, including:

- Haub School of Environment and Natural Resources
- Ruckelshaus Institute
- Ph.D. Program in Ecology
- Wyoming Reclamation and Restoration Center
- Wyoming Natural Diversity Database
- Stable Isotopes Laboratory
- Wyoming Geographic Information Science Center
- Rocky Mountain Herbarium
- Nucleic Acid Exploration Facility
- Berry Center for Biodiversity Conservation
- Entomology Museum
- UW-NPS Research Center (Jackson Hole)
- USFWS Cooperative Study Unit (Department of Zoology and Physiology)
- UW’s partnership with the National Center for Atmospheric Research

The task force report argued that this set of assets – many of them initiated or significantly strengthened during the implementation of three strategic plans – enabled UW (1) to develop a unique and internationally recognized program in biodiversity science and (2) to draw the

connections between the scientific aspects of biodiversity and scholarly questions more naturally addressed through the social sciences, humanities, and arts.

In December, 2011, a second task force, appointed by Provost Myron Allen and Vice President Frost, examined the questions of such an institute's administrative locus and structure and near-term hiring needs. This task force recommended locating the Biodiversity Institute in an expanded School of Environment, Natural Resources, and Biodiversity, under Professor Ingrid Burke, director of the current School of Environment and Natural Resources. The second task force also recommended starting a search for a director of the Biodiversity Institute as soon as possible. That search is currently under way.

**PRIOR RELATED BOARD DISCUSSIONS/ACTIONS:**

None

**WHY THIS ITEM IS BEFORE THE BOARD:**

Provost Allen will update the Board on the status of this initiative.

**ACTION REQUIRED AT THIS BOARD MEETING:**

None

**AGENDA ITEM TITLE:**

**Geological Museum Update**, Allen (guest Mark Clementz to present)

**CHECK THE APPROPRIATE BOX(ES):**

- Work Session
- Education Session
- Information Item
- Other            Specify:

Work will begin this summer on the first-phase renovation of UW Geological Museum. This project will upgrade the museum's facilities, now 56 years old, making the museum a focal point for student and faculty research. The project will also enhance the public's access to information about Wyoming's geologic history and mineral resources.

The architectural and engineering firm of Malone Belton Abel P.C., of Sheridan worked with UW planners to design the improvements. They include asbestos removal in the museum's floor tiles; modernizing of the building's mechanical, electrical, lighting and fire protection systems; upgrading technology; updating and reinstalling existing exhibits, including new signs; and new exhibits. The museum is expected to reopen in early September.

Professor Mark Clementz of the Department of Geology and Geophysics will give a presentation on the project.

**BACKGROUND AND POLICY CONTEXT OF ISSUE:**

The museum closed briefly in the summer of 2009, following state-mandated cuts in UW's budget. The museum reopened in August 2009, with the help of private funds from the UW Foundation. Shortly after that, Professor Emeritus Brainerd "Nip" and Anne Mears donated \$570,000 to support the museum. Matched by state funds, the Mears endowment now totals \$1.14 million. A second fund, in memory of noted geologist S.H. Knight, was created later in 2009. With state matching dollars, the S.H. Knight endowment has reached \$250,000. The Mears and Knight endowments will generate operating money for the museum.

The UW president's office has allocated \$500,000 in one-time money for museum upgrades. Adding that to \$200,000 generated by the Mears' endowment, the university has \$700,000 to spend for the first phase of the project.

**PRIOR RELATED BOARD DISCUSSIONS/ACTIONS:**

In May 2009, the Board approved the elimination of staff position funding for the museum as part of a much larger budget reduction plan.

**ACTION REQUIRED AT THIS BOARD MEETING:**

None

**AGENDA ITEM TITLE: Capital Construction, Collins**

- a. White Hall Asbestos and Regulated Material Abatement
- b. White Hall Renovation – Design-Bid-Build
- c. Buildings Sale and Removal – 1015 Lewis, 460 N. 11<sup>th</sup>, 462 N. 11<sup>th</sup> (on Michael B. Enzi STEM Facility Site)
- d. Building Sale and Removal – Greenhouse on NW corner of 22<sup>nd</sup> and Grand (at Gateway Center Site)

**CHECK THE APPROPRIATE BOX(ES):**

- Work Session  
 Education Session  
 Information Item  
 Other           Specify: Committee of the Whole (CONSENT AGENDA)

**a. White Hall Asbestos and Regulated Material Abatement**

**BACKGROUND AND POLICY CONTEXT OF ISSUE:**

The renovations to White Hall consist primarily of interior life safety issues for a high rise building. This is a continuation of the project that started in 2003 with the renovation of McIntyre, Orr and Downey Halls student housing surrounding the Washakie Complex.

The extent of the asbestos and regulated materials was identified in a hazardous material study done on the facility. Facilities Planning and Residence Life and Dining Services determined the extent of abatement for this project concentrating on those materials that risked possible damage during construction activities, or that were easily accessed. AMEC Earth and Environmental of Laramie, Wyoming, has provided the design and construction documents to achieve the necessary bidding and abatement work. The goal is to start the abatement work in late May 2012 and complete the project in August 2012. The project was configured to complete certain areas of the facility so renovation of the completed areas could start prior to completion of the entire project.

Asbestos was expected on several insulated water pipes as experienced in the previous renovations to McIntyre and Orr Halls. The discovery of asbestos in the sprayed acoustical ceilings texture present in Downey Hall was expected in White Hall since the projects were constructed at the same time. The asbestos was not present on the ceilings, saving both expected costs and time. The AMEC estimate for the abatement in White Hall was \$350,000.00. The bid from Safetech of Billings, Montana came in at \$311,460.00 which includes removal of vinyl asbestos floor tile, accessible pipe insulation fittings, mechanical equipment insulation, window caulk at operable windows, electrical ballasts, and fluorescent light bulbs.

The asbestos abatement was publicly advertised prior to the receipt of the bids on April 6, 2012. The apparent low bidder for the asbestos project is Safetech of Billings, Montana. All six bids received were out-of-state contractors.

The project is funded with approximately four million dollars of reserves within Residence Life and Dining Services and a \$10M bond issue which was approved by the 2012 Wyoming Legislature.

**PRIOR RELATED BOARD DISCUSSIONS/ACTIONS:**

- July 2011 – Trustees approval of capital request of \$14M (\$4M of reserves and \$10M bond issue).

**WHY THIS ITEM IS BEFORE THE BOARD:**

This item is for acceptance of the asbestos abatement bids by the Board of Trustees as preparatory work for the construction phase of the White Hall Renovation.

**ARGUMENTS IN SUPPORT:**

Funding from the Residence Life and Dining Services reserves is available to start immediately with the abatement.

**ARGUMENTS AGAINST:**

None

**ACTION REQUIRED AT THIS MEETING:**

Acceptance of the asbestos abatement bids by the University of Wyoming Board of Trustees to proceed with White Hall Asbestos and Regulated Material Abatement.

**PRESIDENT'S RECOMMENDATION:**

It is recommended that the Board of Trustees of the University of Wyoming accept the recommended asbestos abatement bids to permit the White Hall Asbestos and Regulated Material Abatement in the amount of \$311,460.00 to Safetech of Billings, Montana.

**b. White Hall Renovation – Design-Bid-Build**

**BACKGROUND AND POLICY CONTEXT OF ISSUE:**

The renovation of White Hall consists primarily of interior life safety issues for a high rise building. This is a continuation of the project that started in 2003 with the renovation of McIntyre, Orr and Downey Halls student housing surrounding the Washakie Complex.

The Facilities Planning Office and the White Hall Planning team have approved the prepared construction documents. GSG Architecture of Casper, Wyoming, has provided the design and construction documents to achieve the necessary bidding and construction documents. The goal is to start construction in the Fall of 2012 as soon as the asbestos abatement is completed. Completion of the renovation is planned for May, 2013.

The \$8.2M estimate for the construction will provide a fire protection system throughout the building; fire alarm system; upgrades to the electrical system with new switch gear, room outlets and lighting fixtures; new doors and hardware for the sleeping rooms; new finishes; entrance

vestibule; ADA compliant toilets and sleeping rooms; new shower controls; and new lounge areas. In addition, operable windows will be replaced with fixed windows and ventilators.

The renovation was publicly advertised starting March 20, 2012. Four bids were received on April 17, 2012 with three resident contractors and one resident contractor bidding as a non-resident. Bids were received with several alternates to align the project with the available funds. The bids have been evaluated and the staff recommendation will be made at the Board meeting.

The project is funded with approximately four million dollars of reserves within Residence Life and Dining Services and a \$10M bond issue which was approved by the 2012 Wyoming Legislature.

**PRIOR RELATED BOARD DISCUSSIONS/ACTIONS:**

- July 2011 – Trustees approval of capital request of \$14M (\$4M of reserves, \$10M bond issue).

**WHY THIS ITEM IS BEFORE THE BOARD:**

This item is for acceptance of the construction bids by the Board of Trustees to initiate the construction phase of the White Hall Renovation prior to the issuance of the bonds so that the construction contractor can prepare shop drawings, order materials and prepare for the short construction duration of the project.

**ARGUMENTS IN SUPPORT:**

The funding from the July 2012 bond issue will be available so construction work can begin following the completion of the asbestos abatement, to the extent construction can begin.

**ARGUMENTS AGAINST:**

None

**ACTION REQUIRED AT THIS MEETING:**

Acceptance of the construction bids and a construction contract by the University of Wyoming Board of Trustees to proceed with the construction for the White Hall Renovations and additional modifications to McIntyre, Orr and Downey Halls.

**PRESIDENT'S RECOMMENDATION:**

It is recommended that the Board of Trustees of the University of Wyoming accept the recommended construction bid and contract to permit the construction of the White Hall Renovation and additional modifications to McIntyre, Orr and Downey Halls.



**c. Buildings Sale and Removal – 1015 Lewis, 460 N. 11<sup>th</sup>, 462 N. 11<sup>th</sup> (on Michael B. Enzi STEM Facility Site)**

**BACKGROUND AND POLICY CONTEXT OF ISSUE:**

The buildings at 1015 E. Lewis, 460 N. 11<sup>th</sup>, and 462 N. 11<sup>th</sup> are located within the site for the Michael B. Enzi STEM facility (See Exhibit). The University has owned the property located at 1015 E. Lewis Street for 45 years (1967), the property located at 460 N. 11<sup>th</sup> Street for 6 years (2006), and the property located at 462 N. 11<sup>th</sup> for 12 years (1990). 460 N. 11<sup>th</sup> has been utilized as a rental property while the other two buildings have been used as offices for Physical Plant Preventative Maintenance and Moving Services. The buildings must be removed no later than fall 2012 to allow time to prepare the site for construction, which is anticipated to start March 2013.

Given their structural characteristics and condition, the UW Real Estate office has determined through procedures established by the Vice President for Administration that the three buildings should be made available and advertised for sale and removal to the public. The house at 466 N. 11<sup>th</sup> Street that has been owned by the University for two years is also located within the Enzi STEM facility site and will be deconstructed this summer due to its height and structural configuration.

**PRIOR RELATED BOARD DISCUSSIONS/ACTIONS:**

- May 2011 – Board of Trustees approved the site location for the Michael B. Enzi STEM facility on the block of property owned by the University described as Lewis Street to Bradley Street between 10<sup>th</sup> and 11<sup>th</sup> Streets.

**WHY THIS ITEM IS BEFORE THE BOARD:**

“It is the policy of the University of Wyoming that when a facility is no longer occupied, or upon request of the University administration, an evaluation of the subject facility or land shall be made to guide decisions regarding the retention or disposal of the facility and the land. The Vice President for Administration shall establish procedures, as appropriate, to determine necessary analyses to be used in the evaluation. Any evaluation regarding retention or disposal of real property shall be presented to the Trustees of the University of Wyoming for consideration.”

UW Regulation 1-102, Attachment A: Policy for Retention or Disposal of Real Property. Approved by the Board of Trustees of the University of Wyoming July 25, 1998

**ARGUMENTS IN SUPPORT:**

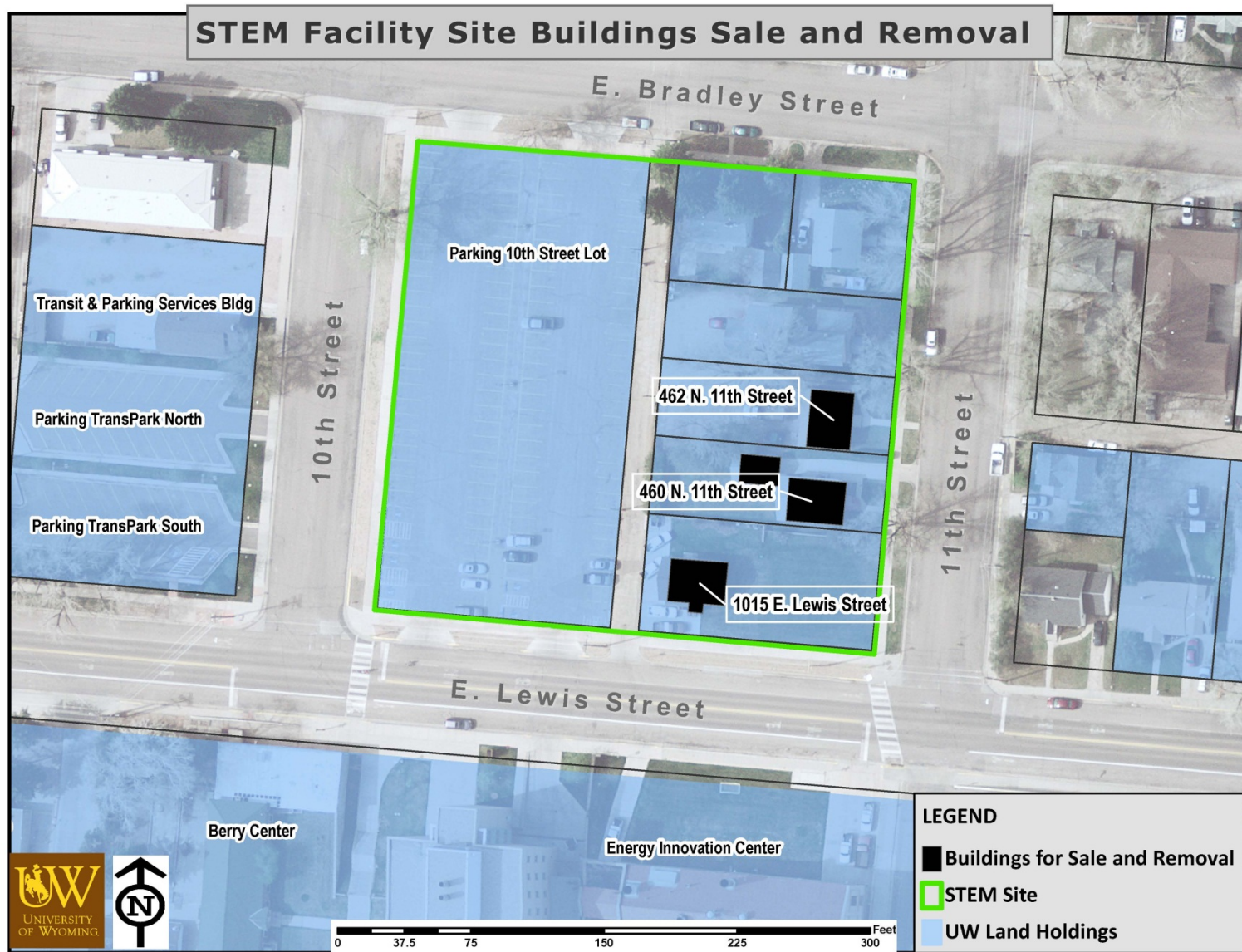
- Advertisement for sale and removal by a third party reduces the University's deconstruction costs.
- The rentals at 460 N. 11<sup>th</sup> and 466 N. 11<sup>th</sup> will be vacant beginning June 1.
- The summer/fall season provides optimum conditions for a house removal project.
- The buildings need to be removed this summer/fall 2012 to facilitate the Enzi STEM facility construction schedule.

**ACTION REQUIRED AT THIS BOARD MEETING:**

The Board's specific approval to sell and remove the buildings located at 1015 E. Lewis, 460 N. 11<sup>th</sup> Street, and 462 N. 11<sup>th</sup> Street.

**PRESIDENT'S RECOMMENDATION:**

It is recommended that the Board of Trustees of the University of Wyoming authorize the sale and removal of the buildings located at 1015 E. Lewis, 460 N. 11<sup>th</sup> Street, and 462 N. 11<sup>th</sup> Street, Laramie, WY.



**d. Building Sale and Removal – Greenhouse on corner of 22<sup>nd</sup> and Grand (at Gateway Center Site)**

**BACKGROUND AND POLICY CONTEXT OF ISSUE:**

The greenhouse is located on the 2.4 acre site approved for the Gateway Center that was the former U.S. Forest Service Research Station at 22<sup>nd</sup> and Grand Avenue, directly across 22<sup>nd</sup> from the UW Conference Center (See Exhibit). The site contains the greenhouse, research station office facility, a multi-garage facility and a storage facility. The buildings were transferred to the University in 2005. The greenhouse is approximately 30 feet x 18 feet and has not been fully utilized since the University received the improvements in 2005. The buildings will need to be removed to prepare the Gateway Center site for construction. The UW Real Estate Office has received a number of inquiries regarding the sale of the greenhouse over the past several years.

Given the number of personal inquiries regarding the sale of the greenhouse and the impending Gateway Center project, the UW Real Estate office has determined that the greenhouse should be made available and advertised for sale and removal to the public.

**PRIOR RELATED BOARD DISCUSSIONS/ACTIONS:**

- January 2012 – The Board of Trustees approved the 2.4 acre site at the northwest corner of 22<sup>nd</sup> and Grand Avenue for the construction of the Gateway Center.

**WHY THIS ITEM IS BEFORE THE BOARD:**

“It is the policy of the University of Wyoming that when a facility is no longer occupied, or upon request of the University administration, an evaluation of the subject facility or land shall be made to guide decisions regarding the retention or disposal of the facility and the land. The Vice President for Administration shall establish procedures, as appropriate, to determine necessary analyses to be used in the evaluation. Any evaluation regarding retention or disposal of real property shall be presented to the Trustees of the University of Wyoming for consideration.”

UW Regulation 1-102, Attachment A: Policy for Retention or Disposal of Real Property. Approved by the Board of Trustees of the University of Wyoming July 25, 1998

**ARGUMENTS IN SUPPORT:**

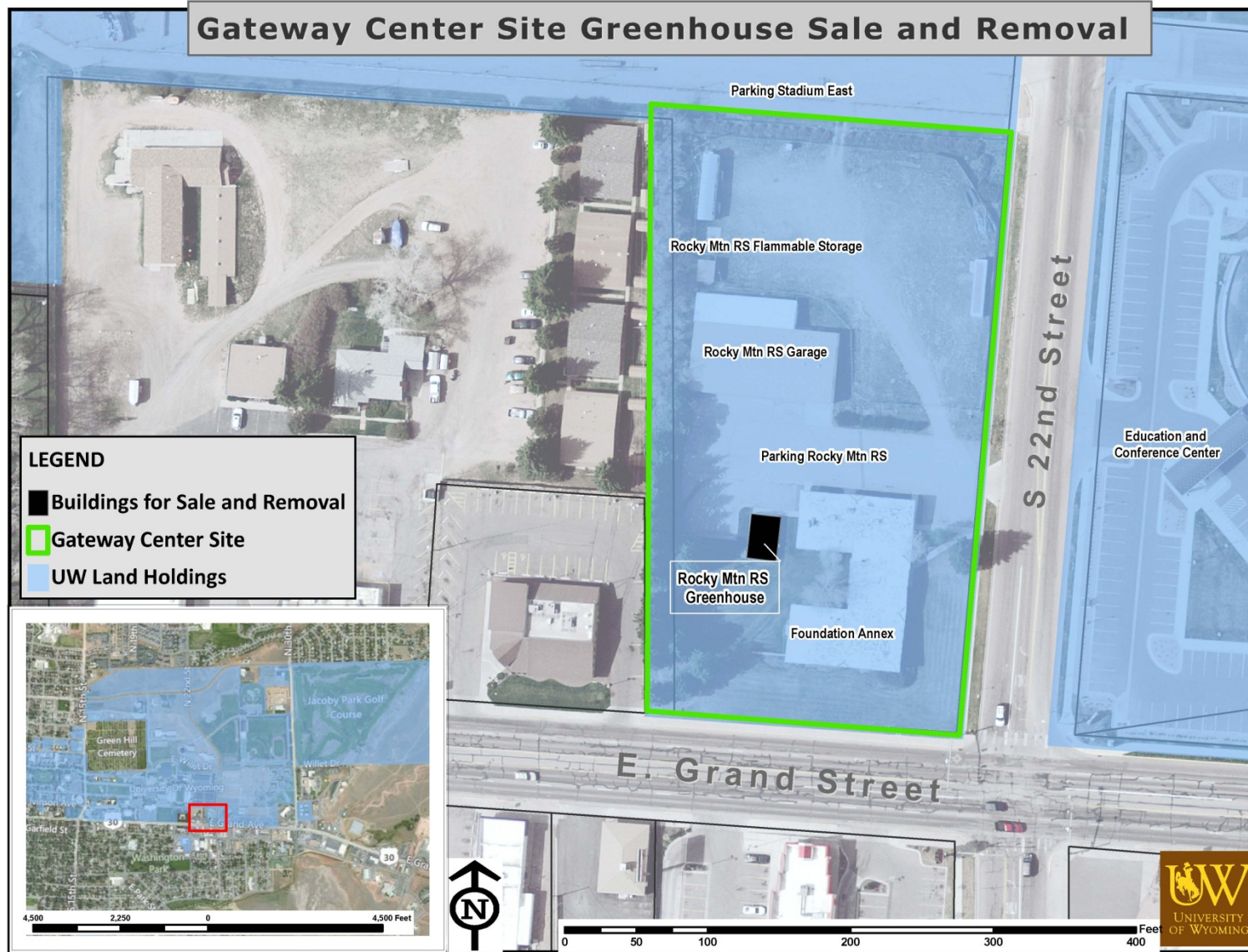
- The sale and removal of the greenhouse will assist in preparing the site for future development.
- This sale provides an opportunity for the University to remove the structure from the site while there is ongoing interest from the public to purchase the greenhouse.
- Advertisement for sale and removal by a third party reduces the University's deconstruction costs.

**ACTION REQUIRED AT THIS BOARD MEETING:**

The Board's specific approval to sell and remove the greenhouse located at 22<sup>nd</sup> Street and Grand Avenue.

**PRESIDENT'S RECOMMENDATION:**

It is recommended that the Board of Trustees of the University of Wyoming authorize the sale and removal of the greenhouse located at 22<sup>nd</sup> Street and Grand Avenue, Laramie, WY.



**AGENDA ITEM TITLE: Revenue Bond Reimbursement Resolution, Lowe**

**CHECK THE APPROPRIATE BOX(ES):**

- Work Session
- Education Session
- Information Item
- Other            Specify: Committee of the Whole (Consent Agenda)

**BACKGROUND AND POLICY CONTEXT OF ISSUE:**

The Board of Trustees will be asked to approve the Series 2012 Facilities Improvement Revenue Bonds (“the Series 2012 Bonds”) in July 2012. There are three capital construction projects described below that involve the issuance of revenue bonds.

As authorized by the Board of Trustees, the University of Wyoming’s 2013-2014 Biennium Budget Request included as its highest priority for capital construction, an item seeking a general fund appropriation of \$32.4 million to support completion of construction documents as well as construction costs for the Performing Arts building renovation and expansion. Facilities critical to maintaining the requirements necessary for student success, to maintain recruiting and retention of both students and faculty, and to obtain future accreditation were the priorities for this project. Instead of a general fund appropriation, the Wyoming Legislature appropriated \$14.2 million from the earnings of the permanent Wyoming mineral trust fund and granted the University of Wyoming the authority to issue revenue bonds and raise private donations for amounts up to \$14.2 million. Additional major maintenance or other UW internal funds may be used to complete the financing of the Performing Arts renovation and addition.

The 2013-2014 Biennium Budget Request also included requests to issue revenue bonds for renovations of White Hall and Half Acre Gymnasium. The Legislature granted authority to issue up to \$10 million in revenue bonds for the White Hall project and up to \$12 million for Half Acre. Both of these bond issues are supported by student fees.

The total project cost for renovation of White Hall is projected to be up to \$14 million. Together with \$4 million in auxiliary cash reserves, the \$10 million in bond proceeds will support completion of the construction documents and the construction itself. The renovation will transform the existing 12-story dormitory into a residence hall to serve students for the foreseeable future. It will incorporate new life-safety upgrades, including building-wide fire suppression systems, pressurized smoke control systems and a fully integrated fire alarm system. Enhancements to the electrical distribution system will provide adequate power for all modern electrical devices in the rooms and interior lighting upgrades. Interior design improvements, such as new carpeting, inviting lounge space, computer labs and study rooms with comfortable furnishings will complete the renovation. Construction must commence in May 2012 in order to complete the project and be ready for students to occupy the hall in August 2013. A Reimbursement Resolution, if approved by the Board, would allow the university to reimburse itself from the July bond proceeds for amounts expended on the project between May and July

for any portion of the \$4 million cash reserves expended and necessary to cover the design and construction costs. Should the project bidding be favorable and the full \$14 million is not required, Residence Life and Dining Services would utilize the remainder of the \$4 million reserves on improvements to other high rise residence halls (McIntyre and Orr Halls) that could not be accomplished during previous improvement programs.

The Half Acre Recreation and Wellness Center will be constructed with a holistic concept of wellness. Implementing a new and improved Campus Recreation experience integrating Kinesiology and Wellness and the students, faculty and staff will provide the opportunity to integrate the seven aspects of wellness (physical, emotional, social, intellectual, occupational, spiritual and environmental) all under a single roof. In addition to more cardiovascular exercise machines, more free-weight stations, and more space for multi-activity sports, the renovation will provide informal gathering and social spaces, creating an environment that encourages users to pause, rest, socialize and further enrich their experience at the University of Wyoming. The projected cost of the Half Acre Gymnasium renovation and addition is \$27 million. The Legislature appropriated \$15 million in general funds, and the financing will be complete with the issuance of up to \$12 million in student-fee-supported revenue bonds.

In addition, a portion of the proceeds of the Series 2012 Bonds may be used to advance refund a portion of the Series 2005 University of Wyoming Facilities Improvement Revenue Bonds (the "Series 2005 Bonds"), currently outstanding in the amount of \$12,545,000. The portion of the Series 2005 Bonds to be advance refunded will be up to \$9,725,000. The administration will continue to monitor market conditions in order to determine if substantial interest cost savings can be achieved through an advance refunding of the Series 2005 Bonds.

#### **PRIOR RELATED BOARD DISCUSSIONS/ACTIONS:**

The Trustees have had numerous discussions regarding these capital construction projects and have approved each step in the capital construction process, including the discussion and approval of student fees supporting two of the projects. The Board was briefed most recently at their March 2012 Board meeting about the upcoming Series 2012 revenue bond issue.

#### **WHY THIS ITEM IS BEFORE THE BOARD:**

In the event the White Hall project is completed for less than \$14 million, the cash used in the initial phase of the project could be reimbursed from the bond proceeds. The Board is being asked to approve a Reimbursement Resolution in order to accommodate this scenario. The Reimbursement Resolution is attached.

#### **ARGUMENTS IN SUPPORT:**

The Board authorized the University to seek legislative approval to issue revenue bonds for the White Hall and Half Acre projects. The Legislature authorized the University to issue revenue bonds for the Performing Arts, White Hall and Half Acre projects. The Governor supported these legislative actions.

The Board has directed University officials to identify and bring forward opportunities for refunding when borrowing rates are favorable and interest savings are material.

Approval of a Reimbursement Resolution will allow the White Hall renovation project to proceed on schedule and be complete in time for students to occupy the hall in August 2013. It will provide the flexibility to use the financing resources to their highest and best use.

**ARGUMENTS AGAINST:**

None

**ACTION REQUIRED AT THIS BOARD MEETING:**

Approval of a Reimbursement Resolution related to the White Hall project.

**PRESIDENT'S RECOMMENDATION:**

The President recommends approval of the Resolution as described in the item above.



## THE TRUSTEES OF THE UNIVERSITY OF WYOMING

### RESOLUTION

AUTHORIZING THE ESTABLISHMENT OF A METHOD FOR THE TRUSTEES OF THE UNIVERSITY OF WYOMING TO MAKE DECLARATIONS OF OFFICIAL INTENT IN ORDER TO PERMIT THE TRUSTEES OF THE UNIVERSITY OF WYOMING TO REIMBURSE ITSELF FOR CAPITAL EXPENDITURES WITH PROCEEDS OF FUTURE TAXABLE OR TAX-EXEMPT BORROWINGS IN ACCORDANCE WITH THE TREASURY DEPARTMENT'S REIMBURSEMENT REGULATIONS

WHEREAS, the University of Wyoming (the "University") is a legally created, established, organized and existing body corporate and politic under the Constitution and the laws of the State of Wyoming; and

WHEREAS, the Internal Revenue Service has issued Treasury Regulation Section 1.150-2, the final regulations with respect to the use of proceeds of tax-exempt bonds for reimbursement purposes (the "Reimbursement Regulations"); and

WHEREAS, in order to comply with the Reimbursement Regulations, The Trustees of the University (the "Trustees") find it to be advantageous to establish a method whereby the Trustees can be reimbursed for capital expenditures with proceeds of future taxable or tax-exempt borrowings;

NOW, THEREFORE, BE IT RESOLVED BY THE TRUSTEES OF THE UNIVERSITY OF WYOMING THAT:

**Section 1. Declaration of Official Intent.** The Trustees designate and direct the University's Interim Vice President for Fiscal Administration to act on behalf of the Trustees in declaring the Trustees' official intent from time to time to reimburse capital expenditures of the Trustees with proceeds of future taxable or tax-exempt borrowings. The declaration of official intent shall (a) state that the Trustees reasonably expect to reimburse the Trustees for the capital expenditure from proceeds of a future taxable or tax-exempt borrowing within 18 months of the date of the expenditure of money on the capital expenditure or on the date upon which the project, if any, containing the capital expenditure is placed in service or abandoned, whichever is later (but in no event more than 3 years after the date of the original expenditure of such money); (b) not be made later than 60 days after the date of the payment of the capital expenditure; (c) contain a general functional description of the property to which the reimbursement relates; and (d) indicate the maximum principal amount of debt expected to be issued for such reimbursement. Each such declaration of official intent shall be noted prior to or within 60 days of the expenditure of any money on such capital expenditure (or such later time as may be permitted by the Reimbursement Regulations) with the Secretary of the Trustees, who is hereby

authorized and directed to maintain a record of all declarations of official intent, the capital expenditures to be covered by such declaration and the allocations of borrowing proceeds to reimbursement for such capital expenditures. The University's Interim Vice President for Fiscal Administration, in consultation with the Trustees' bond counsel, is further authorized and directed to take all necessary and desired actions to implement this procedure for declaration of official intent.

**Section 2. Confirmation of Prior Acts.** All prior acts and doings of the officials, agents and employees of the Trustees which are in conformity with the purpose and intent of this Resolution shall be and the same hereby are in all respects ratified, approved and confirmed.

**Section 3. Repeal of Inconsistent Resolutions.** All other resolutions of the Trustees, or parts of resolutions, inconsistent with this Resolution are hereby repealed to the extent of such inconsistency.

**Section 4. Effective Date of Resolution.** This Resolution shall take effect immediately upon its passage.

ADOPTED AND APPROVED BY THE TRUSTEES OF THE UNIVERSITY OF WYOMING THIS 4<sup>TH</sup> DAY OF MAY 2012.

THE TRUSTEES OF THE UNIVERSITY OF WYOMING

By \_\_\_\_\_  
President

[SEAL]

Attest:

By \_\_\_\_\_  
Secretary

**THE TRUSTEES OF THE UNIVERSITY OF WYOMING**

**REIMBURSEMENT ENTRY**

The following is an official declaration of intent of Trustees (the "Trustees") of the University of Wyoming (the "University") pursuant to Treasury Regulation Section 1.150-2 (the "Reimbursement Regulations") and the Resolution of the Trustees adopted on May 4, 2012 (the "Resolution"). Pursuant to the Reimbursement Regulations and the Resolution, the Trustees reasonably expects to reimburse itself for the following capital expenditures with proceeds of a future taxable or tax-exempt borrowing within 18 months of the date of the expenditure of moneys on the capital expenditure or on the date upon which the project, if any, containing the capital expenditure is placed in service or abandoned, whichever is later (but in no event more than 3 years after the date of the original expenditure of such moneys).

Reimbursement  
Number: \_\_\_\_\_

Date of  
Expenditure: \_\_\_\_\_

Amount to be Reimbursed: \$\_\_\_\_\_

Functional Description of the Property to which the Reimbursement relates \_\_\_\_\_  
\_\_\_\_\_  
\_\_\_\_\_  
\_\_\_\_\_

**THE TRUSTEES OF THE UNIVERSITY OF WYOMING**

By \_\_\_\_\_

Name:

Title:

Date of Official Intent: \_\_\_\_\_

**AGENDA ITEM TITLE: Gateway Center Update, Blalock**

**CHECK THE APPROPRIATE BOX(ES):**

- Work Session
- Education Session
- Information Item
- Other           Specify: Committee of the Whole (Consent Agenda)

Vice President for Institutional Advancement and President/CEO of the UW Foundation Ben Blalock will provide an update on progress of the University of Wyoming Gateway Center facility project. The UW Gateway Center is a partnership project of the University Foundation, the University of Wyoming Alumni Association, the UW Center for Advising and Career Services, and UW Admissions. The UW Gateway Center will be a new facility that will provide a unique opportunity to engage UW's students, alumni, and supporters like never before as well as celebrate history and traditions of the UW.

**1. Committee of the Whole: REGULAR BUSINESS**  
**Board of Trustees Committee Reports**

CHECK THE APPROPRIATE BOX(ES):

- Work Session  
 Education Session  
 Information Item  
 Other                      Specify: Committee of the Whole (Regular Business)

**A. Academics and Research Committee (Allen)**

Trustee Palmerlee, Committee Chair

**B. Fiscal and Legal Affairs Committee (Lowe/Collins)**

Trustee Davis, Committee Chair

**C. Student Affairs/Athletics/Administration/Information Technology Committee (Axelson)**

Trustee Mead, Committee Chair

**D. Alumni Board**

Trustee Lauer, Board Liaison

**E. Foundation Board**

Trustees Davis and Bostrom, Board Liaisons

**F. Ruckelshaus Institute of Environment and Natural Resources (RIENR) Board**

Trustee Davis, Board Liaison

**G. Energy Resource Council (ERC)**

Trustee Palmerlee, Board Liaison

**1. Committee of the Whole- CONSENT AGENDA**  
**Approval of Contracts and Grants, Gern**

CHECK THE APPROPRIATE BOX(ES):

- Work Session
- Education Session
- Information Item
- Other            Specify: Committee of the Whole (Consent Agenda)

**Sponsored Programs**

The following sponsored programs are accepted subject to compliance with the University's policies on classified information and protection of human subjects. This report covers March 2012.

**March 2012**

<b>Sponsor</b>	<b>Amount</b>	<b>Principal Investigator (PI)</b>	<b>Co-PI</b>	<b>Dept</b>	<b>Description</b>
Battelle	\$35,000	Deng, Min		Atmospheric Science	Radar Research in Support of AIME
Dartmouth College	\$289,456	Weinig, Cynthia		Botany	Genetic Analysis of Natural Variation in the Control of Water Use Efficiency and Response to Drought Stress in Brassica Rapa
Encana	\$5,000	Smith, Mae Lynn		UW Extension	Exploring the Nature of Wyoming
Fisheries and Oceans Canada	\$5,000	Newsome, Seth		Zoology	Correlating isotopic, movement, and dive data to assess individuality in ringed seals in the Canadian Arctic
FL Internat'l University	\$5,820	Bowen, Anne		Nursing	Tanzanian Drug treatment as AIDS Prevention-Reliability and Validity Study
General Electric	\$30,000	Ackerman, John F		Chemical	Development of High CTE Glasses for Ceramic Coating of Advanced Turbine Exhausts Incorporating Low Thermal Conductivity Particles
Healthways	\$52,854	Anatchkova, Bistra		WY Survey & Analysis Center	Utah and Idaho Quitnet Evaluation
IA State University	\$48,035	Kobulnicky, Henry A.		Physics	Intermediate-Mass Star Formation: Bridging the High and Low-Mass Regimes
KY, University of	\$21,716	Gomelsky, Mark		Molecular Biology	Hms phenotype of Yersinia pestis
MD, University of	\$50,000	Tschirhart, John T.		Economics	Developing a Framework for the Use of Computable General Equilibrium Economic and Ecological Models for Fisheries Management in the Chesapeake Bay
MPG Ranch	\$26,556	Hufford, Kristina		Ecosystem Science & Management	An Investigation of the Impacts of Seed Origin on Grassland Restoration Success
MT, State of	\$44,000	Anatchkova, Bistra		WY Survey & Analysis Center	Medicaid Chronic Disease and Health Survey

<b>Sponsor</b>	<b>Amount</b>	<b>Principal Investigator (PI)</b>	<b>Co-PI</b>	<b>Dept</b>	<b>Description</b>
MT, State of	\$152,000	Anatchkova, Bistra		WY Survey & Analysis Center	2012 Montana Adult Tobacco Survey; and CFDA 93.283 Portion of MT Adult Tobacco Survey; and CFDA 93.520 Portion of MT Adult Tobacco Survey
ND State University	\$44,100	Ksaibati, Khaled		Civil Engineering	Mountain Plains Consortium GA
ND State University	\$43,013	Ettema, Robert		Civil Engineering	MPC Geotechnical Limit to Scour at Spill-through Abutments
ND State University	\$79,278	Ksaibati, Khaled		Civil Engineering	MPC Improved Understanding of Pavements Impacts and Cost-Effective Designs Based on Mechanistic Empirical Methods
ND State University	\$80,007	Young, Rhonda		Civil Engineering	Use of Travel Time, Travel Time Reliability and Winter Condition Index Information for Improved Operation of Rural Interstates
ND State University	\$66,651	Schmidt, Richard		Civil Engineering	Structural Health Monitoring of Highway Bridges Subjected to Overweight Trucks, Phase I - Instrumentation Development and Validation
ND State University	\$76,951	Ksaibati, Khaled		Civil Engineering	Developing Statistical Models for Crash Severity Comparing Statewide, County and Indian Reservation Roads
NM Dept of Health	\$317,917	Feldman, Laura		WY Survey & Analysis Center	Independent Evaluation for Tobacco Use Prevention and Control Program
RocketHub	\$986	Herbert, Stephen		Plant Sciences	Domesticating Algae for the 21st Century: Confirmation of Volvox Algal CAM Transgene Expression in Chlamydomonas
SweetPro Harvest Fuel	\$7,588	Meyer, Allison		Animal Science	Effects of a Novel Block Supplement on Beef Cow Performance and Hay Intake During Late Gestation
Toomey Foundation	\$3,000	Stewart, Emma Eileen		Botany	Toomey Foundation field collection/plant identification
Trihydro Corporation	\$6,800	Spaulding, Elizabeth		Inst Environmental & Natural Resources	Wyoming Mine Inspection Input and Training Meetings



<b>Sponsor</b>	<b>Amount</b>	<b>Principal Investigator (PI)</b>	<b>Co-PI</b>	<b>Dept</b>	<b>Description</b>
US Dept Ag ARS	\$38,604	Johnson, Patrick A		Chemical	Development of Biosensors for the Detection of Arboviruses
US Dept Ag NIFA	\$995,742	Porter, Christine		Kinesiology & Health	Food Dignity: action research on engaging food insecure communities and universities in building sustainable community food systems; and Subcontracts for Food Dignity 1001061; and Exempt Portion of Food Dignity 1001061.
US Dept Defense DLA	\$3,549	Kline, Jill		Small Business Development Center	Program income for PTAC 11-12
US Dept Ed	\$67,852	Aagard ,Tammy		Student Financial Aid	Pell Grant 11-12
US Dept Ed	\$485,478	Pearce, Jayne		Student Educational Opportunity	Educational Opportunity Centers--EOC1--PY2011
US Dept Ed	\$230,000	Pearce, Jayne		Student Educational Opportunity	Educational Opportunity Centers--EOC North--PY2011
US Dept Health & Human Services NIH	\$28,256	Fay, David		Molecular Biology	Developmental Functions of Rb Family Proteins (Year 7)
US Dept Interior BLM	\$30,000	Hufford, Kristina		Ecosystem Science & Management	Seed Collection
US Dept Interior BLM	\$40,000	Caffrey, Paul		WY Geographic Info Sci Ctr	WY Soils Salinity Mapping Assessment
US Dept Interior USGS	\$5,358	Kerr, Greg		Engineering Dean	FY2011 Annual Application under Section 104 B of the Water Resources Research Act of 1984, as amended, U.S. Geological Survey.
US Dept Interior USGS	\$10,107	Shuman, Bryan		Geology	Multi-Century Droughts in Wyoming's Headwaters Evidence from Lake Sediments
US Dept Interior USGS	\$11,322	Ewers, Brent		Botany	Impact of Bark Beetle Outbreaks on Forest Water Yield in Southern Wyoming
US Dept Interior USGS	\$8,057	Kelleners, Thijs J		Ecosystem Science & Management	Fate of Coalbed Methane Produced Water in Disposal Ponds in the Powder River Basin

<b>Sponsor</b>	<b>Amount</b>	<b>Principal Investigator (PI)</b>	<b>Co-PI</b>	<b>Dept</b>	<b>Description</b>
US Dept Interior USGS	\$5,109	Snider, Jefferson R.		Atmospheric Science	Instrumentation for Improved Precipitation Measurement in Wintertime Snowstorms
US Dept Interior USGS	\$3,131	MacDonnell, Lawrence J		Law School	A Treatise on Wyoming Water Law
US Dept Interior USGS	\$13,618	Brant, Jonathan		Civil Engineering	Integrated Accelerated Precipitation Softening (APS) - Microfiltration (MF) Assembly and Process Development to Maximize Water Recovery During Energy Production and CO2 Sequestration
US Dept Interior USGS	\$13,211	Geerts, Bart		Atmospheric Science	Multi-frequency Radar and Precipitation Probe Analysis of the Impact of Glaciogenic Cloud Seeding on Snow
US Dept Interior USGS	\$22,422	Ewers, Brent		Botany	Decadal Scale Estimates of Forest Water Yield After Bark Beetle Epidemics in Southern Wyoming
US Nat'l Aeronautics & Space Admin	\$68,915	Jang-Condell, Hannah		Physics	Large-Scale Structure in Protoplanetary Disks: Signatures of Planet Formation
US Nat'l Science Foundation	\$39,615	Shaw, Scott R.		Ecosystem Science & Management	CAPEA: Caterpillars and Parasitoids in the Ecuadoran Andes; and Participant Support for 1000964
US Nat'l Science Foundation	\$90,329	Clementz, Mark		Geology	CAREER: Ecological Diversification of Marine Mammals (Orders Cetacea and Sirenia) through Cenozoic Climate Changed: Evidence from Geochemical Analysis of Fossil Material
UT State University	\$10,000	Freeburn, James		Ag Experiment Station	2008 Western SARE PDP Administrative Support
Various Sponsors	\$16,940	Stewart, Larry Ray		Manufacturing Works	Program Income for 1001178 NIST FY12 Business Services
Various Sponsors	\$6,855	Kline, Jill		Small Business Development Center	Program Income and Match for SBDC
Various Sponsors	\$100	Johnson, Paul E.		Physics	Wy NASA Space Grant Consortium 2010

<b>Sponsor</b>	<b>Amount</b>	<b>Principal Investigator (PI)</b>	<b>Co-PI</b>	<b>Dept</b>	<b>Description</b>
Various Sponsors	\$2,780	Clarke, Pamela		Nursing	Various Nursing Schools Program Development
Various Sponsors	\$1,050	Redder, Alan		WY Natural Diversity Database	Database Management
Various Sponsors	\$1,480	Hamerlinck, Jeffrey		WY Geographic Info Sci Ctr	Spatial Data and Visualization Center
WY Crop Improvement Assoc	\$5,000	Islam, Md		Plant Sciences	Forage Yield and Seed Yield Potential of Novel Tall Fescue under Irrigated Conditions in the Big Horn Basin of Wyoming
WY Dept Agriculture	\$16,171	Smith, Dallen Robert		UW Extension	Rangeland Health Assessment Program: Bighorn Basin Rangeland Monitoring Program
WY Dept Education	\$186,351	Forrester, Jennifer Harris		Science & Mathematics Teaching Ctr	Flooding the Fields with Problem Based Learning Yr 2
WY Dept Education	\$230,762	Welsh, Katherine		Science & Mathematics Teaching Ctr	Math and Science Grant
WY Dept Education	\$234,886	Myers, James		Science & Mathematics Teaching Ctr	Science for the Future: Redesigning Science Education via the Energy-Water-Climate Nexus
WY Game & Fish Dept	\$50,000	Oakleaf, James	Hamerlinck, Jeffrey D.	WY Geographic Info Sci Ctr	Wildlife DSS
WY Humanities Council	\$2,000	Aragon, Cecelia J		Theatre/Dance	Virginia Scharff - The Women Jefferson Loved
WY Water Development Commission	\$74,462	Kerr, Greg		Engineering Dean	Streamflow Variability in the North Platte River Basin
WY Water Development Commission	\$39,338	Rodi, Alfred		Atmospheric Science	Student and Consulting Support

**Sponsored Programs**

**TOTAL 3/2012** \$4,580,577

**Total From 7/2011** \$8,298,017  
**Total From 8/2011** \$9,114,800  
**Total From 9/2011** \$11,788,604  
**Total From 10/2011** \$20,596,061  
**Total From 11/2011** \$8,019,688  
**Total From 12/2011** \$2,042,215  
**Total From 1/2012** \$8,987,718  
**Total From 2/2012** \$1,938,903

**Total Year to Date** 7/2011-3/2012 **\$75,366,582**

**INSTITUTIONAL AWARDS FISCAL YEAR 2012**

Northam, Mark A.	School of Energy Resources	Advancement of Energy Resources	WY Dept Environmental Quality (#WYDEQ40464)	\$51,000
Aagard, Tammy L.	Student Financial Aid	Direct Student Loan 10-11	US Dept Ed (D- ED40310)	\$204,630
Aagard, Tammy L.	Student Financial Aid	Direct Student Loan 11-12	US Dept Ed (1001158)	\$43,612,600
Ballard, Robert E	School Energy Resource	Advanced Tech Ctr Operations & Maintenance	WY Dept Environmental Quality (WYDEQ49812OM)	\$1,050,000
			<b>TOTAL Inst 3/2012</b>	<u><u>\$44,918,230</u></u>
<b>GRAND TOTAL</b>			<b>\$120,284,812</b>	

## 2. Committee of the Whole- CONSENT AGENDA

### Personnel, Allen

CHECK THE APPROPRIATE BOX(ES):

- Work Session  
 Education Session  
 Information Item  
 Other           Specify: Committee of the Whole (Consent Agenda)

### A.Items for Action Recommended by the President

#### APPOINTMENTS

##### 1. Faculty

It is recommended to the Trustees of the University of Wyoming that the following faculty appointments be approved as indicated.

#### University Libraries

<u>Name</u>	<u>Rank</u>	<u>Salary</u>	<u>Appointment Period</u>
-------------	-------------	---------------	---------------------------

#### *Coe Reference Department*

<b>Proctor, Julia</b>	Assistant Librarian	\$48,000/FY	03/26/2012 to 06/30/2013
-----------------------	---------------------	-------------	--------------------------

Julia Proctor received a B.A. (2005) in English Literature from Western Washington University, and an M.S. (2009) from the University of Michigan in Library and Information Services. Ms. Proctor has been a Documents, Law, and Maps Librarian at the University of Michigan Harlan Hatcher Graduate Library since 2009.

#### PROMOTIONS

##### 1. Faculty

It is recommended to the Trustees of the University of Wyoming that the following faculty promotions be approved as indicated.

#### College of Arts & Sciences

<u>Name</u>	<u>New Rank</u>
-------------	-----------------

#### *African-American and Diaspora Studies*

<b>Lawson-Borders, Gracie L.</b>	Professor
----------------------------------	-----------

#### *Department of Art*

<b>Klages, Ricki L.</b>	Professor
-------------------------	-----------

#### *Department of Chemistry*

<b>Anderson, David T.</b>	Professor
---------------------------	-----------

#### *Department of Communication & Journalism*

<b>Patton, Tracey M.</b>	Professor
--------------------------	-----------

*Department of Music*

**Turpen, John Scott** Professor

*Department of Statistics*

**Robinson, Timothy J.** Professor

*Department of Zoology & Physiology*

**Skinner, Donal C.** Professor

*Religious Studies Program*

**Flesher, Paul V.M.** Professor

**College of Education**

Name New Rank

*Department of Educational Studies*

**Trent, Allen W.** Professor

**College of Engineering and Applied Science**

Name New Rank

*Department of Mechanical Engineering*

**Naughton, Jonathan W.** Professor

**College of Health Sciences**

Name New Rank

*Division of Kinesiology and Health*

**Benham-Deal, Tami B.** Professor

*Family Medicine Residency Program - Casper*

**Veauthier, Brian M.** Clinical Associate Professor<sup>1</sup>

*Family Medicine Residency Program - Cheyenne*

**Brandes, Lisa K.** Clinical Associate Professor<sup>1</sup>

*School of Pharmacy*

**Hornecker, Jaime Rose** Clinical Associate Professor<sup>1</sup>

<sup>1</sup>Clinical professor appointments are without rights to tenure.

**2. Academic Professionals**

It is recommended to the Trustees of the University of Wyoming that the following promotions of academic professionals be approved as indicated.

**College of Agriculture and Natural Resources**

Name New Rank

*Cooperative Extension Service*

**Feuz, Bridger M.** Senior Extension Educator

**Hill, Hudson R.** Senior Extension Educator

**Stam, Barton R.** Senior Extension Educator

### College of Arts & Sciences

Name New Rank

*Department of Mathematics*

**Weber, William S. Jr.** Senior Lecturer

### College of Law

Name New Rank

**Playton, Dona** Associate Lecturer

### TENURE APPOINTMENTS WITH PROMOTION

It is recommended to the Trustees of the University of Wyoming that the following faculty be granted tenure with a promotion in rank.

### College of Agriculture and Natural Resources

Name New Rank

*Department of Agricultural and Applied Economics*

**Ehmke, Mariah** Associate Professor

Dr. Mariah Ehmke received her Ph.D. in Agricultural Economics from Purdue University (2005). She is a former USDA-Needs Fellow and American Association of University Women American Fellow. She received the 2012 Agricultural and Applied Economics Association's Sylvia Lane Mentor Fellowship, recognizing her as an up and coming applied economics professional. Her research program focuses on economic behavioral issues surrounding food, health, and the environment. Her research work on family economic behavior and childhood obesity is influential in the applied economics field, providing methods to integrate behavioral economics and economic experiments in obesity. She helped obtain over \$1.3 million in grant funding at the University of Wyoming. Her University of Wyoming teaching focuses on agribusiness strategy and consumer theory and behavior. She received a Teaching Certificate of Achievement from the National Science Foundation and American Economic Association in 2010.

**Peck, Dannele E.** Associate Professor

Dr. Dannele Peck received her Ph.D. in Agricultural and Resource Economics from Oregon State University (2006). Since joining the faculty in fall 2006, she has contributed to the University's teaching mission by advising undergraduate students in the Agricultural Business degree program; teaching courses in range economics, risk analysis, and theory of the firm; and mentoring graduate students in research on the economics of wildlife-livestock disease management, water management, and other agricultural topics. She has been honored with two teaching awards, and a "Best Article" award from the Australian Journal of Agricultural and Resource Economics. She has participated in numerous interdisciplinary research teams whose grant proposals have attracted over \$3 million dollars of research funding. She is also an alumnus of UW's McNair Scholars Program, and the first McNair Scholar in the nation to return to her baccalaureate institution as a faculty member.

**Rashford, Benjamin S.** Associate Professor

Dr. Rashford received his Ph.D. in Agricultural and Resource Economics from Oregon State University (2006). His appointment since joining UW has been split among research, cooperative extension, and teaching. His research and extension efforts have focused on issues at the intersection of agriculture and the environment, including the implications of climate change for agricultural land-use and habitat conservation, the economics of wildlife-livestock disease, and the tradeoffs between energy development and wildlife conservation. He has collaborated on over \$4 million in extramural funding to support these programs, and has advised state and federal agencies, and non-profits on the economics of wildlife conservation. He also teaches graduate courses in Quantitative Methods, and has been the Coordinator of the Graduate Program in Agricultural and Applied Economics since 2008.

*Department of Animal Science*

**Alexander, Brenda M.**

Associate Professor

Dr. Brenda M. Alexander received her Ph.D. in Reproductive Biology from the University of Wyoming (1999). She teaches upper division classes for the Department of Animal Science including Equine Nutrition and Physiology and Mammalian Endocrinology. In addition, she contributes to the medical education of Wyoming students as a co-director of the Nervous Systems class in the WWAMI program. Her research has focused on the neural-endocrine development and expression of male sexual behavior. She has received over \$1 million dollars in grant funds from USDA and NIH, and has published numerous articles in scientific and popular publications.

*Department of Ecosystem Science and Management*

**Kelleners, Thijs**

Associate Professor

Dr. Thijs Kelleners earned his Ph.D. in Environmental Science from Wageningen University, the Netherlands in 2001. He joined UW in the fall of 2006, after completing Postdoc assignments at the US Salinity Laboratory (2001-2004) and Utah State University (2005-2006). At UW, his time is split between teaching and research. Courses taught include soil physics, modeling flow and transport in soils, and agroecology seminar. His research focuses on the measurement of the dielectric properties of porous media for soil moisture determination and on the modeling of water, heat, and carbon fluxes in the soil-plant-atmosphere system. Over his career, he has published 18 peer-reviewed articles on the measurement and modeling of the soil environment. In 2011-2012 he chaired the Technical Committee for Multistate Soil Physics Research in the Western Region.

*Department of Ecosystem Science and Management*

**Norton, Jay B.**

Associate Professor

Dr. Jay Norton received his Ph.D. from the University of Montana (2000). Before becoming a faculty member at UW in the summer of 2006, he served as farm advisor and director of the University of California Cooperative Extension in Tuolumne County. His current responsibilities include research and extension in soil fertility management. His scholarly activities focus on understanding economic and ecological impacts of soil degradation, and developing management systems to reduce or mitigate disturbance. Dr. Norton's research and extension activities address sustainable agriculture, reclamation research, and ecological restoration in rangeland and agriculture in Wyoming, the western US, and internationally. He has received over \$3 million dollars in grants, mentored nine graduate and three undergraduate student researchers, developed a vigorous reclamation extension program, and published numerous refereed and non-technical articles or publications.

## College of Arts & Sciences

Name

New Rank

*Department of Mathematics*

**Chamberlin, Michelle T.**

Associate Professor

Dr. Chamberlin (Ph.D., Purdue University, W. Lafayette, IN, 2002) was appointed to the Mathematics faculty in 2007. As a liaison between the Mathematics Department and the College of Education, Dr. Chamberlin teaches many mathematics courses for future teachers at all levels. She has published extensively in the area of mathematics education, teacher development, and how students learn mathematics. She has been involved in the Science and Math Teaching Center (SMTC), a joint collaborative between the College of Arts and Sciences and the College of Education. She also is involved in the assessment of student learning in the Mathematics Department. She has received well over \$200,000 in grants.

**Ginting, Victor E.**

Associate Professor

Dr. Ginting (Ph.D., Texas A&M University, College Station) was appointed to the Mathematics faculty in 2007. He is referred to as a "superstar" in the Mathematics Department by the department head who cites nearly \$3 million in grants as principal investigator and co-principal investigator as well as 15 journal articles in numerical analysis/applied mathematics and geosciences. The College of Arts and Sciences recognized Professor Ginting as deserving of the Extraordinary Merit in Research Award in 2010. Professor Ginting directed a doctoral student who received the Outstanding Dissertation award from the UW Graduate Council in 2011. Professor Ginting teaches courses from 2000 to the 5000 level including applied differential equations, various versions and levels of calculus, numerical analysis, elementary linear algebra and more.



Name

New Rank

*Department of Political Science*

**Gabrielson, Teena**

Associate Professor

Dr. Gabrielson (Ph.D., University of California, Davis, CA) was appointed to the Political Science faculty in 2006. Professor Gabrielson has taught a variety of courses from the sophomore to the graduate student level in such areas as political philosophy, American political thought, environmental politics, and seminars on citizenship. Her research reflects these areas with publications on environmental politics and how environmental issues impact ideas about the citizen, identity, and the state. She is an active member of the Haub School of Environment and Natural Resources Faculty Advisory Committee and serves on the College of Arts and Sciences Committee that selects students for summer independent study awards.

**College of Business**

Name

New Rank

*Department of Economics & Finance*

**Janus, Thorsten M.**

Associate Professor

Dr. Janus (Ph.D., University of California at Santa Cruz, 2006) was appointed to the Department of Economics and Finance faculty in 2006. Professor Janus teaches Intermediate Macroeconomics, Game Theory, Economic Development, Principles of Microeconomics and International Trade courses. He has published articles in journals such as Journal of Development Economics, Review of Development Economics, Journal of International Trade and Economic Development and International Game Theory Review and is continuing to pursue a line of research in international and development economics. Recent work includes the international dimensions of financial crises and consulting for the World Bank on international investment flows to and from Arab countries.

**College of Education**

Name

New Rank

*Department of Educational Studies*

**Janak III, Edward A.**

Associate Professor

Dr. Janak (Ph.D., University of South Carolina, 2003) came to the Department of Educational Studies and was appointed tenure track in 2006. His teaching primarily finds him preparing new teachers for the field at the undergraduate and post-baccalaureate levels. His research falls within two strands: diffusing educational history throughout the field of education, and collecting and writing life stories of educators/educational biography.

Name

New Rank

*Department of Professional Studies*

**Bolliger, Doris C.**

Associate Professor

Dr. Bolliger (Ed.D., University of West Florida, Pensacola, FL, 2002) was appointed to the Department of Professional Studies (formerly the Department of Adult Learning & Technology) in the College of Education as an Assistant Professor in 2006. Prior to joining UW she served as an Associate Professor at St. Cloud State, St. Cloud, MN, for four years. Her appointment at UW involves teaching, research, and service pertaining to instructional design and technology on state, national and international levels. She currently serves as the program coordinator and teaches courses in distance education, instructional design, instructional technology, and online teaching and learning. Her primary research interests include satisfaction, communication, interaction, community, and interventions in the online environment. Secondary research interests are learner-centered instructional environments and message design.

*Department of Elementary & Early Childhood Education*

**Johnson, Tricia G.**

Associate Professor

Dr. Tricia Giovacco Johnson (Ed.D., Teachers College, Columbia University, 2004) was appointed to the Department of Elementary and Early Childhood Education in 2006. Her work in the early childhood education

involves program coordination, curriculum development and teaching courses focusing on children's rights, ethical practice, curriculum development and current issues facing the profession. She engages in research related to ethics in early childhood teacher education and kindergarten readiness in the state of Wyoming. She serves preschool programs throughout the state as an outreach educator for the endorsement programs and by providing professional development designed to improve program quality.

### College of Engineering and Applied Science

Name

New Rank

#### *Department of Chemical & Petroleum Engineering*

**Alvarado, Vladimir**

Associate Professor

Dr. Alvarado (Ph.D., University of Minnesota, Minneapolis, MN, 1996) was appointed as an assistant professor in the Department of Chemical and Petroleum Engineering in 2006. Dr. Alvarado's expertise is in the area of multi-phase flow in porous media, particularly in the context of multi-phase flow of hydrocarbon fluids in rock formations. His research activities are funded from a range of sources, including the School of Energy Resources (SER), the Enhanced Oil Recovery Institute, and federal agencies such as the Department of Energy, and international agencies. Dr. Alvarado has established a record of engaged service to the college and the professional organizations in his expertise area. He is also an accomplished teacher and advisor, and has published extensively.

Name

New Rank

#### *Department of Chemical & Petroleum Engineering*

**Johnson, Patrick A.**

Associate Professor

Dr. Johnson (Ph.D. in Chemical Engineering, Columbia University, New York, New York, 2005) was appointed as an assistant professor in the Department of Chemical and Petroleum Engineering in 2006. His research specializes in processes involving biointerfaces, nanomaterials, biosensors, and biomaterials. He has several research projects underway focused on the use of magnetic nano-particles for the development of biosensors and CO<sub>2</sub> capture, as well as using electrospun spider silk proteins for tissue engineering applications. Dr. Johnson's research is funded by the School of Energy Resources, the National Aeronautics and Space Administration, U.S. Department of Agriculture, U.S. Department of Energy, and the U.S. Department of Transportation. He is a talented teacher and advisor, holds two patents, and has published numerous journal articles.

#### *Department of Computer Science*

**Wang, Liqiang**

Associate Professor

Dr. Wang (Ph.D. in Computer Science, Stony Brook University, Stony Brook, NY, 2006) was appointed as assistant professor in the Department of Computer Science in 2006. His research interest is in the design and analysis of parallel computing systems. He has received over a million dollars in research funding from external agencies, notably the National Aeronautics and Space Administration, and the Office of Naval Research. In 2011 he was awarded a Career Award from the National Science Foundation. Dr. Wang provides extensive service to his department and professional societies in his field of expertise. He is an effective and enthused teacher, and has published numerous technical papers.

#### *Department of Mechanical Engineering*

**Jun, Sukky**

Associate Professor

Dr. Jun (Ph.D. in Mechanical Engineering, Northwestern University, Evanston, IL, 1996) was appointed as an assistant professor in 2006. He built a productive research program, funded by a variety of sources including the National Science Foundation. He was an expert in the areas of computational mechanics, physics of materials, and multiscale/multiphysics modeling and simulations. Dr. Jun was an accomplished teacher and advisor. He published extensively, and had a strong record of service to his department and professional societies in his expertise area. Tenure is being awarded posthumously.

## College of Law

Name

New Rank

**Duff, Michael C.**

Professor

Dr. Duff earned a B.A. (1991) summa cum laude in Philosophy from West Chester University of Pennsylvania. He then entered Harvard Law School, where he compiled an impressive service record and earned his J.D. (1995). Prior to joining the College of Law faculty in 2006, he compiled more than a decade of impressive experience as a practicing attorney for a Maine law firm and for the National Labor Relations Board. Professor Duff teaches Labor Law, Administrative Law, Workers Compensation, and Introduction to the Law, a critical class that all first year law students must take. Professor Duff is also the Director of the law school's Academic Support Program.

## TENURE APPOINTMENTS

It is recommended to the Trustees of the University of Wyoming that the following faculty be granted tenure with no change in rank.

## College of Agriculture and Natural Resources

Name

Rank

*Department of Veterinary Sciences*

**Fox, Jonathan H.**

Associate Professor

Dr. Jonathan Fox is a member of the Department of Veterinary Sciences. He obtained a BSc (Medical Cell Biology) in 1990 and a BVSc (Veterinary Science) in 1993 from the University of Liverpool. He then took residency training in veterinary pathology and became certified in 1996. He obtained a PhD from Virginia Tech in 2002 studying mechanisms of toxic neuropathy. He then pursued research in protein misfolding diseases as an instructor at the MassGeneral Institute for Neurodegenerative Disease. He joined the University of Wyoming in 2008. Responsibilities are serving as a pathologist at the Wyoming State Veterinary Laboratory, teaching within the pre-veterinary and neuroscience curricula and running a laboratory studying Huntington's disease. During his time as faculty member he has been awarded national and local grants, and published peer reviewed articles.

## College of Arts & Sciences

Name

Rank

*Department of Geology & Geophysics*

**Kaszuba, John P.**

Associate Professor

Dr. Kaszuba (Ph.D., Colorado School of Mines, Golden, CO) was appointed to the Geology & Geophysics faculty in 2008. His appointment is joint with the School of Energy Resources. With nearly \$2 million in grants, Professor Kaszuba has published refereed articles highly relevant to Wyoming's energy development. He teaches courses at the 2000 level in mineralogy and at the upper division and graduate student level in such areas as geochemical modeling, water-rock interactions, and carbon sequestration. He has been actively involved in reviewing grant proposals for the United States Department of Energy.

## College of Engineering and Applied Science

Name

Rank

*Department of Chemical & Petroleum Engineering*

**Fan, Maohong**

Associate Professor

Dr. Fan (Ph.D. in Environmental Engineering, Chinese Academy of Science, 1997; Ph.D., in Mechanical Engineering, Iowa State University in 2000; Ph.D., Chemical Engineering, Osaka University, Osaka, Japan, 2003) was appointed as a non-tenured associate professor in the Department of Chemical and Petroleum Engineering in 2008, and has a faculty appointment in the School of Energy Resources (SER). Dr. Fan's research interests include advanced coal technologies, syntheses and applications of new materials including catalysts and sorbents, clean energy production. He has received research funding from the National Science Foundation, the U.S. Department of

Energy, the U.S. Environmental protection Agency, SER, as well as international and private corporations. Dr. Fan has authored numerous journal articles in his field of expertise

### **TENURE-TRACK REAPPOINTMENTS**

It is recommended to the Trustees of the University of Wyoming that the following tenure-track faculty be reappointed in probationary positions.

#### **College of Agriculture and Natural Resources**

<u>Name</u>	<u>Rank</u>	<u>Review Year</u>
<i>Department of Agricultural and Applied Economics</i>		
<b>Andersen, Matthew A.</b>	Assistant Professor	5
<b>Hansen, Kristiana M.</b>	Assistant Professor	3
<b>Ritten, John P.</b>	Assistant Professor	4
<i>Department of Animal Science</i>		
<b>Cammack, Kristi</b>	Assistant Professor	5
<b>Lake, Scott L.</b>	Assistant Professor	5
<b>Zhu, Meijun</b>	Assistant Professor	4
<i>Department of Ecosystem Science and Management</i>		
<b>Beck, Jeffrey L.</b>	Assistant Professor	5
<b>Hufford, Kristina M.</b>	Assistant Professor	2
<b>Murphy, Melanie A.</b>	Assistant Professor	2
<i>Department of Family &amp; Consumer Sciences</i>		
<b>Wade, Christine E.</b>	Assistant Professor	4
<i>Department of Molecular Biology</i>		
<b>Gatlin, Jesse C.</b>	Assistant Professor	2
<b>Wall, Daniel M.</b>	Assistant Professor	5
<i>Department of Plant Sciences</i>		
<b>Garcia y Garcia, Axel</b>	Assistant Professor	3
<b>Islam, Md Anowarul</b>	Assistant Professor	4
<b>Kniss, Andrew R.</b>	Assistant Professor	5
<b>Mealor, Brian</b>	Assistant Professor	3
<b>Norton, Urszula</b>	Assistant Professor	3
<i>Department of Veterinary Sciences</i>		
<b>Miller, Myrna M.</b>	Assistant Professor	2
<b>Schumaker, Brant A.</b>	Assistant Professor	2

### College of Arts & Sciences

<u>Name</u>	<u>Rank</u>	<u>Review Year</u>
<i>American Studies Program</i>		
<b>Adelt, Ulrich</b>	Assistant Professor	3
<b>Soto, Lilia M.</b>	Assistant Professor	2
<i>Department of Anthropology</i>		
<b>Henne, Adam P.</b>	Assistant Professor	3
<b>Murphy, Melissa S.</b>	Assistant Professor	4
<b>Toulson, Ruth E</b>	Assistant Professor	2
<i>Department of Art</i>		
<b>Baumbach, Diana L.</b>	Assistant Professor	3
<b>Hunt, Elizabeth Moore</b>	Assistant Professor	5
<b>Shadwell, Shelby K.</b>	Assistant Professor	3
<b>Venn, Jennifer E.</b>	Assistant Professor	5
<i>Department of Chemistry</i>		
<b>Balaz, Milan</b>	Assistant Professor	4
<b>Lehmann, Teresa Erika</b>	Assistant Professor	4
<b>Leonard, Brian M.</b>	Assistant Professor	2
<b>Zhou, Jing</b>	Assistant Professor	5
<i>Department of Communication &amp; Journalism</i>		
<b>Landreville, Kristen D.</b>	Assistant Professor	2
<i>Department of Criminal Justice</i>		
<b>Lee, Jason V.</b>	Assistant Professor	3
<b>Wodahl, Eric J.</b>	Assistant Professor	5
<i>Department of English</i>		
<b>Fitch, Andrew</b>	Assistant Professor	3
<i>Department of Geography</i>		
<b>Chen, Yi-Ling</b>	Assistant Professor	3
<b>Legleiter, Carl</b>	Assistant Professor	3
<b>Minckley, Thomas A.</b>	Assistant Professor	4
<i>Department of Geology &amp; Geophysics</i>		
<b>Chen, Po</b>	Assistant Professor	4
<b>Riebe, Clifford S.</b>	Assistant Professor	4
<i>Department of History</i>		
<b>Helfgott, Isadora A.</b>	Assistant Professor	3

<b>Means, Jeffrey D.</b>	Assistant Professor	5
<b>Poblete-Cross, JoAnna U.</b>	Assistant Professor	3
<i>Department of Mathematics</i>		
<b>Hall, Christopher J.</b>	Assistant Professor	5
<b>Liu, Rongsong</b>	Assistant Professor	3
<b>McAllister, Tyrrell B.</b>	Assistant Professor	3
<b>Williford, Jason S.</b>	Assistant Professor	4
<i>Department of Modern &amp; Classical Languages</i>		
<b>Steele, Rebecca E.</b>	Assistant Professor	3
<i>Department of Music</i>		
<b>Lamartine, Nicole C.</b>	Assistant Professor	5
<b>McGee, Blake A.</b>	Assistant Professor	2
<b>Meredith, Scott A</b>	Assistant Professor	3
<b>Vanderborgh, Beth D.</b>	Assistant Professor	4
<i>Department of Physics &amp; Astronomy</i>		
<b>Feiguin, Adrian E.</b>	Assistant Professor	3
<b>Wang, Wenyong</b>	Assistant Professor	4
<i>Department of Political Science</i>		
<b>Aiken, Nevin T.</b>	Assistant Professor	2
<b>Garner, Andrew D.</b>	Assistant Professor	4
<i>Department of Psychology</i>		
<b>Laurent, Heidemarie K.</b>	Assistant Professor	2
<b>McCrea, Sean M.</b>	Assistant Professor	5
<b>McKibbin, Christine L.</b>	Assistant Professor	5
<b>Penningroth, Suzanna L.</b>	Assistant Professor	5
<b>Wilkowski, Benjamin M.</b>	Assistant Professor	4
<i>Department of Sociology</i>		
<b>Painter, Matthew A.</b>	Assistant Professor	2

*Department of Theatre & Dance*

<b>Deckert, Jennifer L.</b>	Assistant Professor	5
<b>Jackson, Lawrence M.</b>	Assistant Professor	4
<b>O'Hagan, John J.</b>	Assistant Professor	4

*Department of Zoology & Physiology*

<b>Dillon, Michael E.</b>	Assistant Professor	3
<b>Goheen, Jacob R.</b>	Assistant Professor	2
<b>Prather, Jonathan</b>	Assistant Professor	3

*Gender and Women's Studies*

<b>Dewey, Susan C.</b>	Assistant Professor	2
<b>Pafunda, Danielle M.</b>	Assistant Professor	2

*International Studies Program*

<b>Seitz, Thomas R.</b>	Assistant Professor	3
<b>Watson, Marcus D.</b>	Assistant Professor	2

*Religious Studies Program*

<b>DeNapoli, Antoinette E.</b>	Assistant Professor	2
--------------------------------	---------------------	---

**College of Business**

<u>Name</u>	<u>Rank</u>	<u>Review Year</u>
<i>Department of Economics &amp; Finance</i>		
<b>Choi, Nicole Y.</b>	Assistant Professor	3
<b>Skiba, Alexandre</b>	Assistant Professor	3
<b>Skiba, Hilla Maaria</b>	Assistant Professor	3
<i>Department of Management &amp; Marketing</i>		
<b>Cooper, Joseph T.</b>	Assistant Professor	3
<b>Hunt, David M.</b>	Assistant Professor	5
<b>Oneto, Stephanie A.</b>	Assistant Professor	5
<b>Stevens, Charles E.</b>	Assistant Professor	2

**College of Education**

<u>Name</u>	<u>Rank</u>	<u>Review Year</u>
<i>Department of Educational Studies</i>		
<b>Roxas, Kevin C.</b>	Assistant Professor	4
<b>Shim, Jenna M.</b>	Assistant Professor	2
<i>Department of Professional Studies</i>		
<b>Holt, Kara L.</b>	Assistant Professor	2
<b>Range, Bret G.</b>	Assistant Professor	2

*Department of Professional Studies*

<b>Shepherd, Craig</b>	Assistant Professor	4
<b>Warren, Jane A.</b>	Assistant Professor	5

*Department of Elementary & Early Childhood Education*

<b>Forrester, Jennifer H.</b>	Assistant Professor	2
<b>Han, Keonghee Tao</b>	Assistant Professor	2
<b>Madrid, Samara Dawn</b>	Assistant Professor	4

**College of Engineering and Applied Science**

<u>Name</u>	<u>Rank</u>	<u>Review Year</u>
<i>Department of Chemical &amp; Petroleum Engineering</i>		
<b>Holles, Joseph</b>	Associate Professor	4
<b>Oakey, John S.</b>	Assistant Professor	2
<b>Yin, Shunde</b>	Assistant Professor	4
<i>Department of Civil &amp; Architectural Engineering</i>		
<b>Brant, Jonathan A.</b>	Assistant Professor	4
<i>Department of Computer Science</i>		
<b>Ulinski, Amy C.</b>	Assistant Professor	2
<i>Department of Mechanical Engineering</i>		
<b>Frick, Carl P.</b>	Assistant Professor	4
<b>Han, Chung-Souk</b>	Associate Professor	4
<b>Sitaraman, Jayanarayanan</b>	Assistant Professor	4

**College of Health Sciences**

<u>Name</u>	<u>Rank</u>	<u>Review Year</u>
<i>Division of Communication Disorders</i>		
<b>Petersen, Douglas B.</b>	Assistant Professor	3
<i>Division of Kinesiology and Health</i>		
<b>Porter, Christine M.</b>	Assistant Professor	2
<b>Readdy, Ryan T.</b>	Assistant Professor	2
<b>Zhu, Qin</b>	Assistant Professor	4
<i>Division of Social Work</i>		
<b>Mahapatra, Neely</b>	Assistant Professor	2
<i>School of Nursing</i>		
<b>Purtzer, Mary Ann</b>	Assistant Professor	4
<b>Thomas, Jenifer Jo</b>	Assistant Professor	2



*Wyoming Institute for Disabilities*

<b>Jarman, Michelle</b>	Assistant Professor	4
-------------------------	---------------------	---

**College of Law**

<u>Name</u>	<u>Rank</u>	<u>Review Year</u>
<b>Kalen, Sam</b>	Associate Professor	4
<b>Novogrodsky, Noah B.</b>	Associate Professor	5
<b>Wilson, Matthew J.</b>	Associate Professor	5
<b>Young, Stewart M.</b>	Assistant Professor	2

**EXTENDED-TERM APPOINTMENTS WITH PROMOTION**

**1. Faculty**

It is recommended to the Trustees of the University of Wyoming that five-year extended-term appointments with promotion in rank for the following faculty be approved as indicated.

**University Libraries**

<u>Name</u>	<u>New Rank</u>	<u>Extended Term Number</u>
<i>Coe Reference Department</i>		
<b>Calkins, Kaijsa J.</b>	Associate Librarian	1

**2. Academic Professionals**

It is recommended to the Trustees of the University of Wyoming that six-year extended-term appointments with promotion in rank for the following academic professionals be approved as indicated.

**Academic Affairs**

<u>Name</u>	<u>New Rank</u>	<u>Extended Term Number</u>
<i>School of Environment &amp; Natural Resources</i>		
<b>Lovato, Jill</b>	Associate Research Scientist	1

**College of Agriculture and Natural Resources**

<u>Name</u>	<u>New Rank</u>	<u>Extended Term Number</u>
<i>Cooperative Extension Service</i>		
<b>Chichester, Kellie</b>	Associate Extension Educator	1
<b>Reaman, Kimberly K.</b>	Senior Extension Educator	1

**College of Arts & Sciences**

<u>Name</u>	<u>New Rank</u>	<u>Extended Term Number</u>
<i>Department of Botany</i>		
<b>Sivanpillai, Ramesh</b>	Senior Research Scientist	1

*Department of Chemistry*

**Beckett, Carla D.** Associate Lecturer 1

*Department of Communication & Journalism*

**Stewart, Justin D.** Associate Lecturer 1

*Department of Mathematics*

**Anton, David W.** Associate Lecturer 1

**Prewett, Jonathan L.** Senior Lecturer 2

*Department of Modern & Classical Languages*

**Person, Mark W.** Associate Lecturer 1

*Department of Music*

**Turpen, Jennifer L.** Associate Lecturer 1

*Department of Zoology & Physiology*

**Zhang, Zhaojie** Senior Research Scientist 2

**College of Engineering and Applied Science**

<u>Name</u>	<u>New Rank</u>	<u>Extended Term Number</u>
-------------	-----------------	-----------------------------

*Department of Electrical and Computer Engineering*

<b>Anderson, Jeffrey R.</b>	Associate Lecturer	1
-----------------------------	--------------------	---

**Outreach School**

<u>Name</u>	<u>New Rank</u>	<u>Extended Term Number</u>
-------------	-----------------	-----------------------------

*Outreach Credit Programs*

<b>Jansen, Lawrence A.</b>	Senior Lecturer	2
----------------------------	-----------------	---

<b>Miller, Jeffrey C.</b>	Senior Lecturer	2
---------------------------	-----------------	---

**EXTENDED-TERM APPOINTMENTS**

**1. Faculty**

It is recommended to the Trustees of the University of Wyoming that five-year extended-term appointments with no promotion in rank for the following faculty be approved as indicated.

**Academic Affairs**

<u>Name</u>	<u>Rank</u>	<u>Extended Term Number</u>
-------------	-------------	-----------------------------

*American Heritage Center*

<b>Waggener, John R.</b>	Associate Archivist	2
--------------------------	---------------------	---

<b>Waggener, Leslie C.</b>	Associate Archivist	2
----------------------------	---------------------	---

### University Libraries

<u>Name</u>	<u>Rank</u>	<u>Extended Term Number</u>
<i>Coe Reference Department</i>		
<b>Harlow, Mary A.</b>	Associate Librarian	4
<i>Collection Development</i>		
<b>Hert, Tamsen L.</b>	Associate Librarian	5

## 2. Academic Professionals

It is recommended to the Trustees of the University of Wyoming that six-year extended-term appointments with no promotion in rank for the following academic professionals be approved as indicated.

### Academic Affairs

<u>Name</u>	<u>Rank</u>	<u>Extended Term Number</u>
<i>Art Museum</i>		
<b>Bredehoft, Wendy E.</b>	Associate Research Scientist	1

### College of Agriculture and Natural Resources

<u>Name</u>	<u>Rank</u>	<u>Extended Term Number</u>
<i>Cooperative Extension Service</i>		
<b>Crawford, Warren K.</b>	Associate Extension Educator	2
<b>Panter, Karen L.</b>	Senior Extension Educator	3
<i>Department of Family &amp; Consumer Sciences</i>		
<b>Bittner, Mark T.</b>	Senior Lecturer	3

### College of Engineering and Applied Science

<u>Name</u>	<u>Rank</u>	<u>Extended Term Number</u>
<i>Department of Atmospheric Science</i>		
<b>Wechsler, Perry J.</b>	Senior Research Scientist	4
<i>Department of Mechanical Engineering</i>		
<b>Morton, Scott A.</b>	Senior Research Scientist	3

### College of Health Sciences

<u>Name</u>	<u>Rank</u>	<u>Extended Term Number</u>
<i>Division of Kinesiology and Health</i>		
<b>Smith, Marci L.</b>	Associate Lecturer	1
<b>Werhonig, Gary R.</b>	Associate Lecturer	2

## EXTENDED-TERM-TRACK REAPPOINTMENTS

### 1. Faculty

It is recommended to the Trustees of the University of Wyoming that probationary, one-year reappointments for the following extended-term-track faculty be approved as indicated.

#### Academic Affairs

<u>Name</u>	<u>Rank</u>	<u>Review Year</u>
<i>American Heritage Center</i>		
<b>Hayes, Shaun A.</b>	Assistant Archivist	3

#### University Libraries

<u>Name</u>	<u>Rank</u>	<u>Review Year</u>
<b>Hutchens, Chad E.</b>	Assistant Librarian	4
<b>Moser, Dennis J.</b>	Assistant Librarian	3

### 2. Academic Professionals

It is recommended to the Trustees of the University of Wyoming that probationary, one-year reappointments for the following extended-term-track academic professionals be approved as indicated.

#### Academic Affairs

<u>Name</u>	<u>Rank</u>	<u>Review Year</u>
<i>American Heritage Center</i>		
<b>Uglean Jackson, Laura</b>	Assistant Research Scientist	4
<i>Art Museum</i>		
<b>Crawford, Nicole M.</b>	Assistant Lecturer	3
<b>Miller, Rachel M.</b>	Assistant Research Scientist	3

#### College of Agriculture and Natural Resources

<u>Name</u>	<u>Rank</u>	<u>Review Year</u>
<i>Cooperative Extension Service</i>		
<b>Chapman, Kimberly</b>	Assistant Extension Educator	4
<b>Daniels, Juliet M.</b>	Assistant Extension Educator	5
<i>Cooperative Extension Service</i>		
<b>Edwards, Jeffrey M.</b>	Assistant Extension Educator	3
<b>Frost, Sandra M.</b>	Assistant Extension Educator	5
<b>Garrelts, Ashley</b>	Assistant Extension Educator	3
<b>Ibarra, Josefina</b>	Assistant Extension Educator	3
<b>Jacobsen, Jennifer L.</b>	Assistant Extension Educator	3
<b>Kuipers, Tara L.</b>	Assistant Extension Educator	3

<b>Mealor, Rachel D.</b>	Assistant Extension Educator	4
<b>Saenz, Diane</b>	Assistant Extension Educator	2
<b>Schamber, Robin A.</b>	Assistant Extension Educator	4
<b>Smith, Dallen R.</b>	Assistant Extension Educator	5
<b>Willis, Kentz</b>	Assistant Extension Educator	4

*Department of Animal Science*

<b>Kern, Jessica M.</b>	Assistant Research Scientist	3
<b>McLean, Amy K.</b>	Assistant Lecturer	3
<b>Molle, Joseph Cody</b>	Assistant Research Scientist	2

*Department of Family & Consumer Sciences*

<b>Sprout, Treva</b>	Assistant Lecturer	5
----------------------	--------------------	---

*Department of Plant Sciences*

<b>Obour, Augustine</b>	Research Scientist	2
-------------------------	--------------------	---

**College of Arts & Sciences**

<u>Name</u>	<u>Rank</u>	<u>Review Year</u>
-------------	-------------	--------------------

*Department of Art*

<b>Kikut, Patrick A.</b>	Assistant Lecturer	4
--------------------------	--------------------	---

*Department of Botany*

<b>Wright, Brianna R</b>	Assistant Lecturer	2
--------------------------	--------------------	---

*Department of Communication & Journalism*

<b>Cram, Travis J.</b>	Assistant Lecturer	2
------------------------	--------------------	---

*Department of English*

<b>Bergstraesser, Paul</b>	Assistant Lecturer	5
<b>Pexton, Valerie S.</b>	Assistant Lecturer	5
<b>Stewart, Joyce</b>	Assistant Lecturer	5

*Department of Geography*

<b>Albeke, Shannon E.</b>	Assistant Research Scientist	2
<b>Harty, John Patrick</b>	Assistant Lecturer	4

*Department of Mathematics*

<b>Selden, Jeffrey Lee</b>	Assistant Lecturer	4
----------------------------	--------------------	---

*Department of Modern & Classical Languages*

<b>Sohier, Benedicte Pia</b>	Assistant Lecturer	3
------------------------------	--------------------	---

*Department of Music*

<b>Sinift, Sherry L.</b>	Assistant Lecturer	4
--------------------------	--------------------	---

<b>Williamson, Brad A.</b>	Assistant Lecturer	3
----------------------------	--------------------	---

*Department of Psychology*

<b>Laurent, Sean M.</b>	Assistant Lecturer	2
-------------------------	--------------------	---

### **College of Education**

<u>Name</u>	<u>Rank</u>	<u>Review Year</u>
-------------	-------------	--------------------

*Department of Secondary Education*

<b>Thompson, Rodrick A.</b>	Assistant Lecturer	3
-----------------------------	--------------------	---

*Department of EElementary & Early Childhood Education*

<b>Baldwin, Nikki A.</b>	Assistant Lecturer	3
--------------------------	--------------------	---

<b>Miller, Kimberly Dawn</b>	Assistant Lecturer	5
------------------------------	--------------------	---

<b>Spiker, Amy B.</b>	Assistant Lecturer	5
-----------------------	--------------------	---

### **College of Engineering and Applied Science**

<u>Name</u>	<u>Rank</u>	<u>Review Year</u>
-------------	-------------	--------------------

*Dean's Office*

<b>Erikson, Robert G.</b>	Assistant Lecturer	5
---------------------------	--------------------	---

*Department of Civil & Architectural Engineering*

<b>Gardzelewski, Jon A.</b>	Assistant Lecturer	2
-----------------------------	--------------------	---

*Department of Computer Science*

<b>Buckner, Kim</b>	Assistant Lecturer	4
---------------------	--------------------	---

### **College of Health Sciences**

<u>Name</u>	<u>Rank</u>	<u>Review Year</u>
-------------	-------------	--------------------

*Division of Communication Disorders*

<b>Ross, Catherine L.</b>	Assistant Lecturer	4
---------------------------	--------------------	---

*Division of Social Work*

<b>Dole-Izzo, Elizabeth S.</b>	Assistant Lecturer	2
--------------------------------	--------------------	---

*School of Nursing*

<b>Murphy-Parker, Dana</b>	Assistant Lecturer	5
----------------------------	--------------------	---

*School of Pharmacy*

<b>Harshberger, Cara A.</b>	Assistant Lecturer	3
-----------------------------	--------------------	---

<b>Hunter, Melissa L.</b>	Assistant Research Scientist	5
---------------------------	------------------------------	---

### **College of Law**

<u>Name</u>	<u>Rank</u>	<u>Review Year</u>
-------------	-------------	--------------------

<b>Playton, Dona</b>	Associate Lecturer	3
----------------------	--------------------	---

## **GLOSSARY OF PERSONNEL TERMS**

### **Academic Professional**

Person other than faculty, engaged primarily in activities that extend and support the teaching, research, extension, and service missions of the University. There are four categories of academic professional: Extension Educators, Lecturers, Research Scientists, Post-Doctoral Associates. Individuals belonging to any of the first three categories can hold extended-term-track appointments under certain conditions.

### **Academic-Year (AY) Appointments**

Appointments in which the regular period of employment includes the fall and spring semesters (nine months) of each year, with no accrual of vacation leave. Most faculty members and academic professionals hold AY appointments. AY employees typically receive their nine-month salaries and benefits spread out over the 12 months of each calendar year.

### **Adjunct Faculty**

An adjunct appointment is the appointment of an individual to an academic unit that recognizes special discipline-related expertise but carries no financial obligation per se. Adjunct appointments can include qualified non-academic personnel or faculty with other academic affiliations. Adjunct appointments carry no rights to remuneration, tenure, or employment-related privileges and are normally for three years, with renewal possible.

### **Archives Faculty**

This special faculty designation is reserved for archivists of the American Heritage Center. Archivists are responsible for acquiring original resource material to support academic research and teaching, organizing the material physically and intellectually, and teaching faculty, students and others to use these materials. There are three archivist ranks: Assistant Archivist, Associate Archivist, Archivist.

### **Assistant Professor**

Indicates tenure-track appointments of individuals who hold the terminal degree in their discipline. This is the usual entry-level faculty rank.

### **Associate Professor**

In addition to the qualifications of an Assistant Professor, Associate Professors have established a strong reputation in scholarship and teaching. Generally, faculty hired as Assistant Professors are promoted to the rank of Associate Professor at the time tenure is granted.

### **Clinical Faculty**

Clinical faculty appointments allow experts in health-related fields to contribute to the training of UW students in allied disciplines. Clinical appointments are for at most one year at a time and carry no rights to tenure or extended terms. Clinical faculty members may be salaried members of the UW faculty, in which case their reappointment is subject to annual performance reviews. There are also adjunct clinical faculty appointments, which typically involve health-care professionals whose normal employment is outside the university. Adjunct clinical appointments carry no financial commitment from the University.

### **Emeritus Faculty**

Tenured faculty who retire after long and distinguished service are eligible for emeritus status upon their retirement. The designation is honorary and carries no necessary commitment of space or remunerative employment. By analogy, extended-term academic professionals may be eligible for emeritus status upon retirement. (Emeritus=masculine, emerita=feminine, emeriti=plural)

### **Extended-Term Appointment**

Academic professionals who have successfully completed probationary terms (usually six years) may receive six-year appointments called extended-term appointments. The term also applies to certain librarians and archivists who hold faculty status. These employees are eligible for extended-term appointments after five-year probationary periods. Extended terms for these employees are five years in length. Academic professionals, librarians, and archivists who are in the probationary period are on the extended-term-track.

**Extension Educator**

These academic professionals provide non-credit education to off-campus clientele through UW's Cooperative Extension Service. There are three ranks of Extension Educators: Assistant Extension Educator, Associate Extension Educator, Senior Extension Educator. All Extension Educators are in the College of Agriculture.

**Faculty**

Members of the permanent faculty include tenured or tenure-track Assistant Professors, Associate Professors, and Professors. Also included are tenure-track individuals who hold the rank of Instructor while completing their terminal degrees. Librarians and archivists also hold faculty status. They are eligible for extended terms instead of tenure.

**Fiscal-Year (FY) Appointments**

Appointments in which the regular period of employment is the entire calendar year, with accrual of annual vacation leave. Faculty members who hold administrative positions with summer responsibilities often have FY appointments for the duration of their administrative terms.

**Full-Time Equivalent (FTE)**

A measure of the time commitment expected of an employee or a set of employees. For example, two full-time employees or four half-time employees constitute 2.0 FTE.

**Instructor**

Tenure-track faculty member who does not yet hold the terminal degree in the appropriate field. UW requires verification of degrees in the form of official transcripts. UW does not grant tenure to faculty members who hold Instructor status at the time of the decision.

**Leave of Absence Without Pay**

Academic and administrative personnel may request leaves without pay for periods normally not in excess of one year, for purposes consistent with the professional enhancement of the employee and the advancement of the University's stature.

**Lecturer**

A category of academic professional involved largely in classroom instruction. Lecturers may be appointed to three ranks: Assistant Lecturer, Associate Lecturer, Senior Lecturer.

**Library Faculty**

This faculty designation applies to employees of the University Libraries. There are three ranks of library faculty: Assistant Librarian, Associate Librarian, Librarian.

**Part-Time Employee**

Any employee holding less than a full-time equivalent position (FTE less than 1.0).

**Post-Doctoral Associate**

Post-Docs are doctorally qualified academic professionals seeking greater professional development and research investigation, before obtaining permanent employment. Post-Doctoral appointments are temporary.

**Probationary Faculty**

This term refers to tenure-track faculty members who are working toward tenure and to academic professionals, library faculty, and archive faculty who are working toward extended-term contracts. The probationary term for academic professionals is generally six years, with yearly reviews and re-appointments. For librarians and archivists, it is five years. Faculty members who are on tenure-track appointments typically undergo the review for tenure in the sixth year of employment.



### **Professional Development Leave**

Extended-term academic professionals who have completed six years of service at the University are eligible for professional development leave. The purpose of development leave is to enhance performance, to conduct special studies, or in some other way to enhance an individual's ability to contribute to the University. Development leaves can be granted with or without pay, are the prerogative of the academic unit in which the academic professional is located, and are generally similar to sabbatical leaves for faculty.

### **Professor**

In addition to the qualification of an Associate Professor, "full" Professors have attained wide recognition in their professional fields for scholarship or other creative activity and have gained recognition for superior teaching and service.

### **Research Professor**

Person with demonstrated superior capacity for research contributions, who is employed solely on external funds, and who holds a terminal degree. These appointments are made only at the Professor level and for not more than one year at a time. They are renewable.

### **Research Scientist**

An academic professional whose primary responsibility is to conduct research. There are three ranks for Research Scientists: Assistant Research Scientist, Associate Research Scientist, Research Scientist.

### **Review Year**

Year in which a reappointment review occurs for probationary employees. Normally, tenure-track faculty members undergo mandatory reappointment reviews in their first, second, and fourth years, with optional reviews in the third and fifth years. A review for the tenure decision occurs no later than the sixth year. An explanatory flow chart appears at the end of this glossary. In some cases employees start with credit toward a tenure or extended-term decision, based on their previous experience. In these cases the review year is the number of years of service at UW plus the number of years of credit.

### **Sabbatical Leave**

Sabbatical leave may be granted to any tenured member of the faculty for the purposes of increasing professional competence and usefulness to the University. A minimum of six years of service at the University must precede each period of sabbatical leave, although no right accrues automatically through lapse of time. Sabbatical leaves are normally granted for either a half year (full pay) or a full year (60% of salary). A faculty member who fails to return to the University after a sabbatical leave must repay the amount of compensation received from the University during the sabbatical. Faculty members may not use sabbatical leaves to pursue degrees.

### **Temporary Appointment**

A short-term appointment without rights to tenure or extended term. Most temporary appointments are for one semester or one academic year.

### **Tenure-Track Appointment**

Indicates a probationary faculty appointment prior to the award of tenure. Tenure-track positions generally require six years to tenure, but fewer years may be required based upon level of previous experience and accomplishments.

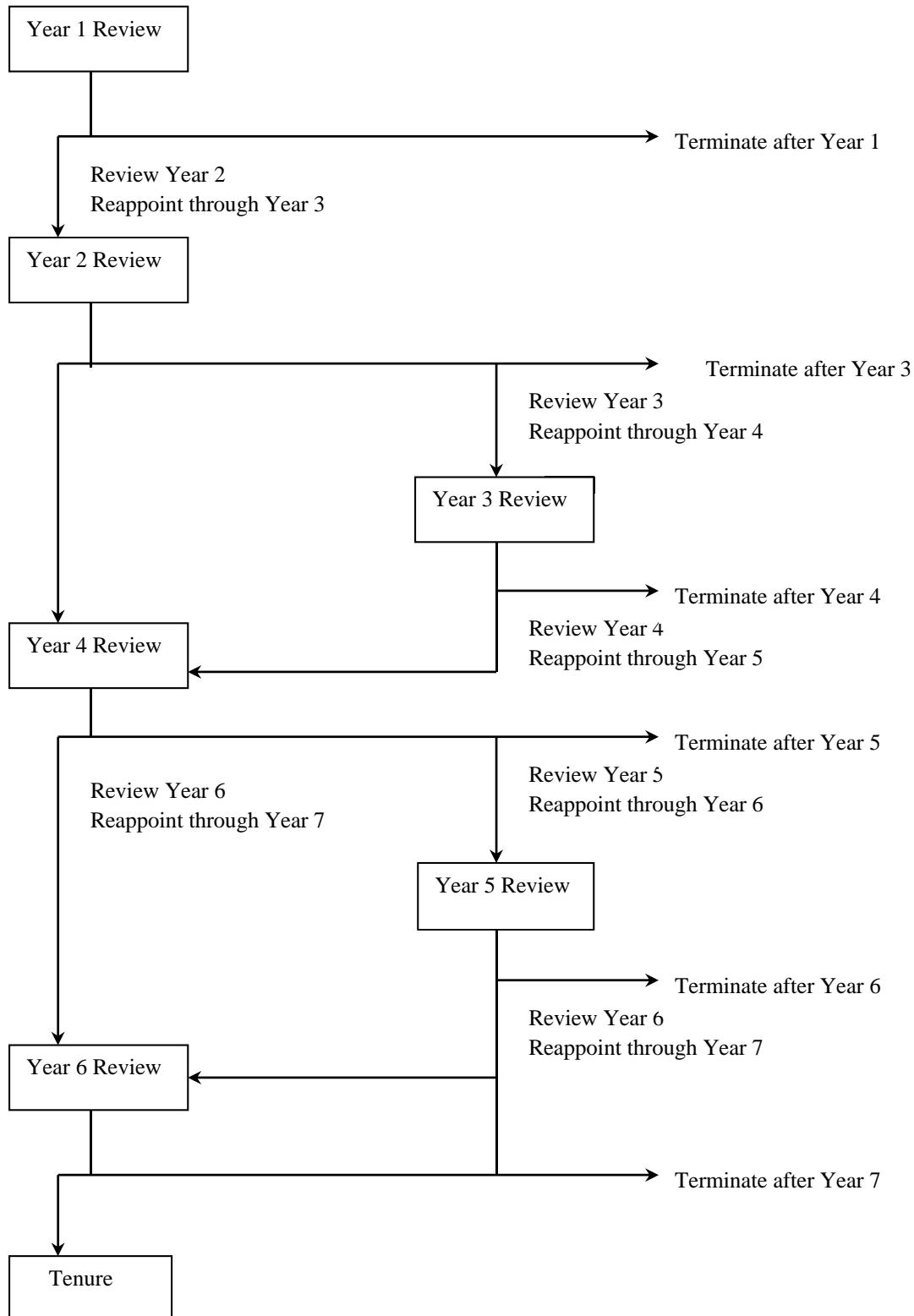
### **Terminal Degree**

Typically the highest earned degree in a field of study. Examples include the Ph.D. (a variety of fields), the M.D. (medicine), the Ed.D. (education), M.F.A. (fine arts), M.Arch. (architecture), and J.D. (law).

### **Visiting Appointment**

Indicates a non-permanent, non-tenure-track faculty appointment. Most visiting appointments are for one year.

## FLOW CHART FOR FACULTY REAPPOINTMENTS



## B. Items for Information

The changes in appointments and reappointments listed below are for the information of members of the Board of Trustees.

### CHANGES IN APPOINTMENTS

#### 1. Faculty

##### Academic Affairs

<u>Name</u>	<u>Rank</u>	<u>Salary</u>	<u>Appointment Period</u>
<i>School of Environment &amp; Natural Resources</i>			
<b>Jakle, Anne C.</b>	Interim Assistant Director	\$47,004/FY	03/01/2012 to 06/30/2012
Ms. Jakle is serving as Interim Assistant Director of the Ruckelshaus Institute.			

##### College of Health Sciences

<u>Name</u>	<u>Rank</u>	<u>Salary</u>	<u>Appointment Period</u>
<i>School of Nursing</i>			
<b>Larsen, Pamala D.</b>	Professor	\$46,428/AY	09/01/2012 to 06/30/2013
Professor Larsen ends her appointment as Associate Dean and continues as a tenured Professor in the School of Nursing.			

### REAPPOINTMENTS

#### 1. Faculty

##### College of Health Sciences

<u>Name</u>	<u>Rank</u>	<u>Appointment Period</u>
<i>Family Medicine Residency Program - Casper</i>		
<b>Cornelius, Maria Anne</b>	Clinical Assistant Professor	07/01/2012 to 06/30/2013
<b>Deiss, Zachory F.</b>	Clinical Assistant Professor	07/01/2012 to 06/30/2013
<b>Kirsch Russell, Caroline</b>	Clinical Assistant Professor	07/01/2012 to 06/30/2013
<b>Radosevich, Thomas E.</b>	Clinical Assistant Professor	07/01/2012 to 06/30/2013
<b>Robitaille, Beth C.</b>	Clinical Associate Professor	08/01/2012 to 06/30/2013
<b>Sievers, Karlynn D</b>	Clinical Assistant Professor	09/20/2012 to 06/30/2013
<b>Veauthier, Brian M.</b>	Clinical Associate Professor	07/01/2012 to 06/30/2013
<b>Works, Cynthia</b>	Clinical Assistant Professor	07/01/2012 to 06/30/2013
<i>Family Medicine Residency Program - Cheyenne</i>		
<b>Brandes, Lisa K.</b>	Clinical Associate Professor	07/01/2012 to 06/30/2013
<b>Broomfield, Kimberly R.</b>	Clinical Assistant Professor	07/01/2012 to 06/30/2013
<b>Healey, John P.</b>	Clinical Assistant Professor	07/01/2012 to 06/30/2013
<b>Malm, Ronald L.</b>	Clinical Associate Professor	07/01/2012 to 06/30/2013
<b>Trelease-Bell, Amy L.</b>	Clinical Associate Professor	07/01/2012 to 06/30/2013

<b>Yost, Patrick</b>	Clinical Assistant Professor	07/01/2012 to 06/30/2013
<i>School of Nursing</i>		
<b>Steiner, Susan H.</b>	Clinical Associate Professor	07/01/2012 to 06/30/2013
<i>School of Pharmacy</i>		
<b>Burch, Jessica C.</b>	Clinical Assistant Professor	07/01/2012 to 06/30/2013
<b>Hilaire, Michelle L.</b>	Clinical Associate Professor	07/01/2012 to 06/30/2013
<b>Hornecker, Jaime Rose</b>	Clinical Associate Professor	07/01/2012 to 06/30/2013
<b>Krueger, Janelle L.</b>	Clinical Assistant Professor	07/01/2012 to 06/30/2013
<b>Onysko, Mary K.</b>	Clinical Assistant Professor	07/01/2012 to 06/30/2013
<b>Petrie, Jennifer L.</b>	Clinical Associate Professor	07/01/2012 to 06/30/2013
<b>Salveson, Lanae</b>	Clinical Assistant Professor	07/01/2012 to 06/30/2013
<b>Weiland, Christy M.</b>	Clinical Assistant Professor	07/01/2012 to 06/30/2013
<b>Woods, Tonja M.</b>	Clinical Associate Professor	07/01/2012 to 06/30/2013
<i>WWAMI Medical Education Program</i>		
<b>Dreiling, Frederick J.</b>	Clinical Assistant Professor	07/01/2012 to 06/30/2013
<b>Swiatek, Donald</b>	Clinical Professor	07/01/2012 to 06/30/2013

## 2. Academic Professionals

### College of Health Sciences

<u>Name</u>	<u>Rank</u>	<u>Appointment Period</u>
<i>Family Medicine Residency Program - Casper</i>		
<b>Maurer, William Burl</b>	Clinical Assistant Lecturer	07/01/2012 to 06/30/2013
<i>Family Medicine Residency Program - Cheyenne</i>		
<b>Oiler, Pamela Mary</b>	Clinical Assistant Lecturer	07/01/2001 to 06/30/2013
<i>WWAMI Medical Education Program</i>		
<b>Hubbell, Colleen</b>	Clinical Associate Lecturer	07/01/2012 to 06/30/2013

### **3. Committee of the Whole- CONSENT AGENDA**

#### **Master List of Degrees, Allen**

CHECK THE APPROPRIATE BOX(ES):

- Work Session
- Education Session
- Information Item
- Other                      Specify: Committee of the Whole (Consent Agenda)

#### **BACKGROUND AND POLICY CONTEXT OF ISSUE:**

In March 1983, the Board adopted the process of annually approving a composite list of all degrees and majors offered by the University of Wyoming. Because of the diversity of academic programs at UW, it was deemed prudent and helpful to have a single list, maintained by the Registrar. While the Board may make changes at any time, the list is annually updated in May and presented to the Board for confirmation.

The 2012 List contains three changes approved by the Board after confirmation of the 2011 List.

#### **PRIOR RELATED ACTIONS OF THE BOARD**

- September 9, 2011 – at the request of the College of Education, with concurrence from the Colleges of Agriculture & Natural Resources, Arts & Sciences, and Health Sciences, the Board eliminated the interdisciplinary majors involving Early Childhood Development under the Master of Arts and Master of Sciences degrees.
- January 20, 2012 – at the request of the School of Energy Resources, the Board changed the name of the Energy Resource Science major under the Bachelor of Science degree to Energy Resource Management and Development.
- March 23, 2012 – at the request of the College of Education, the Board split the Ph.D. degree program in Education into two parts: (1) Education, and (2) Curriculum and Instruction.

#### **ACTION REQUIRED AT THIS BOARD MEETING:**

The Board is asked to approve the updated Master List of Degrees and Majors – 2012.

#### **PRESIDENT'S RECOMMENDATION:**

The President recommends approval.

UNIVERSITY OF WYOMING  
**MASTER LIST OF DEGREES AND MAJORS**

as authorized by the Trustees

**MAY 2012**

*Prepared by the Office of the Registrar*

By way of explanation, the degree title is listed in *bold italics* (for example, *Bachelor of Arts, Bachelor of Science in Chemical Engineering*). The list of majors for a specific degree in a specific college is listed below the degree title. Information in *italics* and parentheses ( ) following a major is explanatory data, and not part of the official major name. Majors with brackets { } require the insertion of a secondary program of study.

**COLLEGE OF AGRICULTURE & NATURAL RESOURCES**

***Bachelor of Applied Science #***

Organizational Leadership

***Bachelor of Science #***

Agricultural Business

Agricultural Communications

Agroecology

Animal and Veterinary Science

Molecular Biology

Rangeland Ecology and Watershed Management

***Bachelor of Science in Family and Consumer Sciences***

***Master of Arts #***

Molecular Biology

***Master of Science #***

Agricultural and Applied Economics

Agronomy

Animal and Veterinary Science

Entomology

Family and Consumer Sciences

Food Science and Human Nutrition (*interdisciplinary*)

Molecular Biology \*

Rangeland Ecology and Watershed Management

Soil Science

***Doctor of Philosophy #***

Agronomy

Animal and Veterinary Science

Entomology

Molecular Biology

Rangeland Ecology and Watershed Management

Soil Science

\* = This major counted under previously listed degree in this college (College of Agriculture & Natural Resources)

# = This listing not counted as a separate major

**COLLEGE OF ARTS & SCIENCES**

***Bachelor of Arts #***

American Indian Studies  
American Studies  
Anthropology  
Art  
Biology  
Botany  
Chemistry  
Communication  
Criminal Justice  
English  
French  
Geography  
Geology and Earth Sciences  
German  
History  
Humanities/Fine Arts  
International Studies  
Journalism  
Mathematics  
Mathematics/Science  
Music  
Philosophy  
Physics  
Political Science  
Psychology  
Religious Studies  
Russian  
Self-Designed Major  
Social Science  
Sociology  
Spanish  
Statistics  
Theatre and Dance  
Women's Studies

***Bachelor of Fine Arts #***

Art \*  
Theatre and Dance \*

***Bachelor of Music #***

Music Education  
Music Performance

\* = This major counted under previously listed degree in this college (College of Arts and Sciences)

# = This listing not counted as a separate major

**COLLEGE OF ARTS & SCIENCES (cont.)**

***Bachelor of Science #***

Astronomy/Astrophysics  
Biology \*  
Botany \*  
Chemistry \*  
Chemistry (ACS approved) #  
Communication \*  
Environmental Geology/Geohydrology  
Geography \*  
Geology  
Journalism \*  
Mathematics \*  
Mathematics/Science \*  
Physics  
Physics Plus {affiliated concentration} #  
Physiology  
Political Science \*  
Self-Designed Major \*  
Social Science \*  
Sociology \*  
Statistics \*  
Theatre and Dance \*  
Wildlife and Fisheries Biology and Management (*professional*)  
Zoology

***Master of Arts #***

American Studies (*interdisciplinary*)  
Anthropology  
Communication  
English  
French  
Geography  
German  
History  
International Studies (*interdisciplinary*)  
Mathematics  
Philosophy  
Political Science  
Psychology  
Sociology  
Spanish

\* = This major counted under previously listed degree in this college (College of Arts and Sciences)

# = This listing not counted as a separate major



**COLLEGE OF ARTS & SCIENCES (cont.)**

***Master of Arts in Teaching #***

History \*

Mathematics \*

***Master of Fine Arts in Creative Writing***

***Master of Music***

***Master of Music Education***

***Master of Planning (Community and Regional)***

***Master of Public Administration***

***Master of Science #***

Botany

Chemistry

Geology

Geophysics

Mathematics \*

Natural Science (*interdisciplinary*)

Physics

Psychology \*

Statistics

Zoology and Physiology

***Master of Science in Teaching #***

Chemistry \*

Geography \*

Mathematics \*

Natural Science (*interdisciplinary*) \*

Physics \*

***Doctor of Philosophy #***

Anthropology

Botany

Chemistry

Geology

Geophysics

Mathematics

Physics

Psychology

Statistics

Zoology and Physiology

\* = This major counted under previously listed degree in this college (College of Arts and Sciences)

# = This listing not counted as a separate major

## **COLLEGE OF BUSINESS**

### ***Bachelor of Science #***

Accounting  
Business Administration  
Business Economics  
Economics#  
Finance  
Management  
Marketing

### ***Master of Business Administration***

### ***Master of Science #***

Accounting  
Economics  
Economics and Finance  
Finance

### ***Doctor of Philosophy #***

Economics  
Management and Marketing

# = This listing not counted as a separate major

## **COLLEGE OF EDUCATION**

### ***Bachelor of Arts #***

Elementary Education  
Elementary and Special Education  
Secondary Education  
Special Education

### ***Bachelor of Science #***

Technical Education (*only available through UW/CC Center*)  
Trades and Industrial Education  
Agricultural Education

### ***Master of Arts #***

Education

### ***Master of Science #***

Counseling  
Education \*  
Natural Science (*interdisciplinary*) \*

### ***Education Specialist***

### ***Doctor of Education***

### ***Doctor of Philosophy #***

Counselor Education and Supervision  
Curriculum and Instruction  
Education #

\* = This major counted under previously listed degree in this college (College of Education)

# = This listing not counted as separate major

**COLLEGE OF ENGINEERING AND APPLIED SCIENCE**

***Bachelor of Science in Architectural Engineering***

***Bachelor of Science in Chemical Engineering***

***Bachelor of Science in Chemical Engineering*** (petroleum engineering option) #

***Bachelor of Science in Civil Engineering***

***Bachelor of Science in Computer Engineering***

***Bachelor of Science in Computer Science***

***Bachelor of Science in Computer Science*** (business option) #

***Bachelor of Science in Electrical Engineering***

***Bachelor of Science in Electrical Engineering*** (Francis M. Long bioengineering option) #

***Bachelor of Science in Electrical Engineering*** (computer engineering option) #

***Bachelor of Science in Energy Systems Engineering***

***Bachelor of Science in Mechanical Engineering***

***Bachelor of Science in Petroleum Engineering***

***Master of Science*** #

Atmospheric Science

Chemical Engineering

Civil Engineering

Computer Science

Computer Science Professional #

Electrical Engineering

Environmental Engineering

Mechanical Engineering

Petroleum Engineering

***Doctor of Philosophy*** #

Atmospheric Science

Chemical Engineering

Civil Engineering

Computer Science

Electrical Engineering

Mechanical Engineering

Petroleum Engineering

# = This listing not counted as a separate major

**COLLEGE OF HEALTH SCIENCES**

***Bachelor of Science #***

Kinesiology and Health Promotion  
Physical Education Teaching  
Speech, Language and Hearing Sciences

***Bachelor of Science in Dental Hygiene***

***Bachelor of Science in Nursing***

***Bachelor of Social Work***

***Master of Science #***

Nursing  
Kinesiology and Health  
Speech-Language Pathology

***Master of Social Work***

***Doctor of Nursing Practice***

***Doctor of Pharmacy***

# = This listing not counted as a separate major

**COLLEGE OF LAW**

***Juris Doctor***

**SCHOOL OF ENVIRONMENT & NATURAL RESOURCES**

***Bachelor of Science #***

Environment and Natural Resources/{affiliated major}

**CROSS-COLLEGE INTERDISCIPLINARY UNDERGRADUATE DEGREES**

***Bachelor of Science #***

Earth Systems Science with a concentration in {affiliated major}  
Energy Resource Management and Development  
Microbiology

# = This listing not counted as a separate major

**CROSS-COLLEGE INTERDISCIPLINARY GRADUATE DEGREES**

***Juris Doctor/Master of Arts in Environment and Natural Resources #***

***Juris Doctor/Master of Public Administration #***

# = This listing not counted as a separate major

**ACADEMIC AFFAIRS**

***Master of Arts #***

Geography/Water Resources #  
Interdisciplinary Studies

***Master of Science #***

Agricultural Economics/Water Resources #  
Biomedical Sciences  
Botany/Water Resources #  
Civil Engineering/Water Resources #  
Economics/Water Resources #  
Geology/Water Resources #  
Interdisciplinary Studies \*  
Neuroscience

Rangeland Ecology and Watershed Management/Water Resources #  
Soil Science/Water Resources #  
Zoology and Physiology/Water Resources #

***Master of {affiliated degree}/Environment and Natural Resources #***

***Doctor of Philosophy #***

Biomedical Sciences  
Ecology  
Hydrologic Science  
Molecular and Cellular Life Sciences  
Neuroscience

\* = This major counted under previously-listed degree in this unit (Academic Affairs)

# = This listing not counted as a separate major

**4. Committee of the Whole- CONSENT AGENDA**  
**ASUW Constitution Revisions, Axelson**

CHECK THE APPROPRIATE BOX(ES):

- Work Session  
 Education Session  
 Information Item  
 Other                   Specify: Committee of the Whole (Consent Agenda)

**BACKGROUND AND POLICY CONTEXT OF ISSUE:**

One substantive change to the Constitution of the Associated Students of the University of Wyoming (ASUW) has been recommended.

Because ASUW works to represent all students, it seeks to amend its constitution to provide a clear anti-discrimination policy. The proposed change to Article III, Membership, Section 3, would add three categories to the anti-discrimination paragraph: resident status, relationship status, and gender identity. The revised section would read, "The Student Government of the Associated Students of the University of Wyoming will not discriminate on the basis of race, color, religion, sex, sexual orientation, age, political belief, veteran status, resident status, disability, national origin, relationship status or gender identity."

As one of its final acts of academic year 2010-11, this change was adopted by the senate as Senate Bill #2315 on April 12, 2011. It was ratified by the student body at the next general election, which was held April 11-13, 2012.

**WHY THIS ITEM IS BEFORE THE BOARD:**

Article VIII, Students, Section F of the Trustee Regulations provides that, "No revisions of, or amendment to, such constitution shall become effective until they have been submitted to and approved by the Trustees." A nearly identical provision is found in Article X, Section 3 of the ASUW Constitution.

**ARGUMENTS IN SUPPORT:**

The ASUW Senate and the student body have supported and approved the proposed changes to make student government more responsive and efficient.

**ARGUMENTS AGAINST:**

None

**ACTION REQUIRED AT THIS BOARD MEETING:**

Formal approval of the proposed changes is requested by ASUW.

**PRESIDENT'S RECOMMENDATION:**

President Buchanan recommends approval.

**CONSTITUTION  
OF THE  
ASSOCIATED STUDENTS  
OF THE  
UNIVERSITY OF WYOMING  
LARAMIE, WYOMING**

Wherever used in this Constitution, the term University refers to the University of Wyoming.

Approved by the ASUW Senate  
March 1981

Approved by the Board of Trustees  
May 1981

Latest Revision

| May ~~2011~~2012

## **CONSTITUTION OF THE ASSOCIATED STUDENTS OF THE UNIVERSITY OF WYOMING**

### **PREAMBLE**

In the belief that students have the right, as well as the obligation, to play a significant role in guiding their University, we, the student body of the University of Wyoming, seeking to provide an effective organization to promote the general welfare of all students at the University, to represent the concerns for the student body, and to provide for and regulate such other matters as are hereinafter set forth, do ordain and establish this Constitution.

### **ARTICLE I**

#### **Name**

The name of this organization shall be the Associated Students of the University of Wyoming, hereinafter referred to as the ASUW.

### **ARTICLE II**

#### **Delegation of Authority and Responsibility**

As an inseparable part of the University of Wyoming, the ASUW derives all power and authority from the Trustees of the University. The authority conferred upon the ASUW shall, along with the accompanying responsibilities, be vested exclusively in the ASUW Student Government established by this Constitution. Further, through the elected representatives to this body, the ASUW shall be responsible to the authority of the President of the University and shall serve as the means by which the governing and administrative authorities of the University may be apprised of representative concerns of the ASUW. The ASUW business, in addition to the services and programs of ASUW, shall, in accordance with the procedures and delegation of responsibility provided herein, be conducted through its Executive, Legislative and Judicial branches.

### **ARTICLE III**

#### **Membership**

**Section 1.** A student enrolled in the University of Wyoming shall be a member of the ASUW during each regular semester of registration when payment or remission of registration fees is made in the amount specified by the University to be recognized as and accorded the privileges of a full-time student.



**Section 2.** Members of the ASUW shall, in accordance with specific provisions contained in this Constitution, be eligible to hold elected or appointed office in the ASUW; shall be entitled to take part in matters of issue or consideration before ASUW; and shall be entitled to participate in the programs or activities provided by the ASUW to include any special benefits provided as part of these programs and activities.

**Section 3.** The Student Government of the Associated Students of the University of Wyoming will not discriminate on the basis of race, color, religion, sex, sexual orientation, age, political belief, veteran status, resident status, disability, ~~or~~ national origin, relationship status or gender identity.

## ARTICLE IV

### Appointed or Elected Officers

The privilege of holding an elected or appointed position as an ASUW representative shall be in accordance with the following provisions.

**Section 1.** A member of the ASUW may be removed from office in the ASUW Executive, Legislative, or Judicial branches if he/she has been found to be on conduct probation as assigned by a Student Judicial Affairs Officer in the Dean of Students Office, or if he/she has been found guilty of other acts which compromise his/her integrity as a student leader and representative of the ASUW. This standard must be maintained throughout the term of office.

**Section 2.** Except as provided elsewhere in this Constitution, a member of the ASUW shall not, at one time, hold office or fulfill responsibilities in more than one (1) of the Executive, Legislative or Judicial branches; however, an ASUW member may, as is provided or determined to be appropriate, maintain multiple responsibilities or positions within one (1) of the three (3) areas.

**Section 3.** With the exception of the Judicial Council, the term of office for each elected or appointed ASUW representative and officer shall be limited to one (1) year; however, this is not to be construed to prevent a student from being re-elected to successive terms in the same position or being appointed or elected to different positions in succeeding terms.

**Section 4.** An Ex-Officio member is a representative chosen by an entity, who shall enjoy all rights of senate membership except the right to vote.

**Section 5.** A Student-at-Large is any full fee paying member of the student body who is not a member of the ASUW Executive, Legislative, or Judicial branch. Students-at-Large who are appointed to ASUW standing or special committees have all rights and duties of committee membership.

**Section 6.** Articles of impeachment may be brought against any member of the Executive, Legislative, or Judicial branch of the ASUW.

## ARTICLE V

### ASUW Executive Branch

The ASUW President, and such assistants as may, from time to time, be approved by the Legislative branch to assist the President, and such assistants as may, from time to time be appointed by the Vice President to assist the Vice President, will constitute the Executive branch. The ASUW President shall have the duty and accompanying authority to represent, promote, and pursue, in behalf of the ASUW, those programs and objectives of the ASUW as such relate to the welfare of students at the University and as such are approved by the duly elected student representatives of the ASUW Legislative branch. As well, the ASUW President shall, on behalf of the ASUW, exercise such discretion or authority as may be delegated by the ASUW Legislative branch in order to facilitate timely ASUW representation in decision-making and program effectuation.

## ARTICLE VI

### ASUW Legislative Branch

The Legislative Branch of the ASUW shall consist of the ASUW Vice President and a student senate, which shall be made up of the student senators annually elected by the ASUW membership. All legislative powers of the ASUW shall be vested in the ASUW Student Senate.

**Section 1.** The ASUW Student Senate shall include thirty (30) elected Senators.. This body shall be constituted in accordance with the following provisions:

- A. Each of the University's seven (7) colleges shall have at least one (1) student senator; and
- B. The remaining twenty-three (23) senators shall be allocated to those colleges with more than one-thirtieth (1/30) of the total full-fee paying University students. This allocation shall be done in exact relation to the percentage of such students who are enrolled in the college; and
- C. All calculations will be based upon the enrollment in the colleges during the semester prior to the general election.

**Section 2.** In order to provide continuity in ASUW activities and business along with providing a mechanism for timely participation by the ASUW in University processes, the ASUW Senate may create Standing and Ad-Hoc committees.

## ARTICLE VII

### ASUW Judicial Council

The Judicial powers of the ASUW and the University of Wyoming student body shall be vested in the ASUW Judicial Council, which shall conduct its business in accordance with the following provisions:

**Section 1.** The Judicial Council shall be composed of seven (7) Justices, appointed by the ASUW President with the advice and consent of three-fourths (3/4) of the voting ASUW Senate.

- A. The ASUW President should make all possible efforts to appoint a diverse group of students to the Judicial Council.
- B. The term of office for each Justice shall be two (2) years; however, this is not to be construed to prevent a student from being reappointed to successive terms;
- C. One (1) of the seven (7) Justices shall, with the advice and consent of three-fourths (3/4) of the voting Senate, be appointed by the ASUW President to serve as chairperson of the Judicial Council; for one (1) year of that justice's two (2) year term and shall be eligible to be appointed to successive terms as Chief Justice by successive ASUW Presidents.
- D. There shall be an advisor appointed by the mutual agreement of the ASUW President and the Dean of Students with the advice and consent of a two-thirds (2/3) of the voting Senate.
- E. Three (3) justices shall each be appointed to serve a two (2) year term in each ASUW Senate term beginning in an odd numbered year, and four (4) justices shall be appointed to serve a two (2) year term in each ASUW Senate term beginning in even numbered years, with the advice and consent of three-fourths (3/4) of the voting Senate.
- F. Members of the Judicial Council may not be publicly involved in any decision before the ASUW Senate.

## ARTICLE VIII

### Meetings and Quorum

**Section 1.** The business of the ASUW Senate shall be conducted in accordance with procedures set forth in the ASUW By-Laws and which shall include the following:

- A. Regular ASUW Senate meetings shall be held each week during Fall and

- Spring semester except for University vacations and holidays or by a two-thirds (2/3) vote of the Senate;
- B. Regular ASUW Senate meetings shall be relocated as determined by the ASUW Senate a minimum of once per semester.
  - C. Special meetings of the ASUW may be called by the Chairperson of the ASUW Senate, the ASUW Vice President, or upon written demand of one-third (1/3) of the current ASUW Senate membership;
  - D. In order to conduct official business of the ASUW Senate, a quorum of two-thirds (2/3) of the voting membership of the Senate shall be present; and
  - E. Each ASUW Senator shall be entitled to one (1) vote on any issue before the Senate, and voting by proxy shall not be allowed.

## **ARTICLE IX**

### **Executive Session**

The Student Senate of the Associated Students of the University of Wyoming shall have the power to move into an Executive Session by a 2/3 vote of the ASUW Student Senate voting membership. The procedure for moving into Executive Session is promulgated in the ASUW By-Laws.

## **ARTICLE X**

### **Amendments**

Amendments to this constitution may be initiated by the ASUW Constitution committee or by a majority of the voting ASUW Senate, or by any ASUW member who presents a draft of the proposed amendment to the ASUW Senate along with a student petition, which includes the signatures of at least ten percent (10%) of the current ASUW membership. Two (2) weeks after initiation at the second reading of a proposed amendment before the Senate, the proposal must be passed the Student Senate by a two-thirds (2/3) vote. When this is obtained, the proposed amendment shall be scheduled for a vote in the next ASUW General Election; and, if the proposal receives a majority of the votes cast in this election, it shall be presented to the University Trustees for final approval.

## **ARTICLE XI**

### **Severability**

**Section 1.** If any section, clause, paragraph, or item of this Constitution is found to be illegal or in conflict with the laws of the State of Wyoming, or the Regulations of the University, the validity of the remaining portions or provisions shall not be affected, and the remainder of this Constitution shall be construed and enforced as if it did not contain the particular part, term, or provision held to be invalid.

## **ARTICLE XII**

### **Enactment**

**Section 1.** This Constitution shall become effective upon a two-thirds (2/3) vote of the ASUW Senate, a majority vote of ASUW members voting, and approval of the Trustees of the University of Wyoming.

**Section 2.** All revisions of or amendments to this Constitution shall be published in an official ASUW publication ten (10) days prior to the General ASUW election at which the student body votes on the revisions and amendments.

**Section 3.** No revisions of, or amendment to, this Constitution shall become effective until they have been submitted to and approved by the University's Trustees.

**Section 4.** This ASUW Constitution shall supersede all previous ASUW Constitutions.

## 5. Committee of the Whole- CONSENT AGENDA

### Approval of Recommendation for Deputy Treasurer of the Board of Trustees, Buchanan

CHECK THE APPROPRIATE BOX(ES):

- Work Session
- Education Session
- Information Item
- Other                      Specify: Committee of the Whole (Consent Agenda)

With the resignation of Doug Vinzant in March 2012, there is no person appointed to fulfill the responsibilities of Deputy Treasurer of the Board of Trustees.

Article VI (Other Officers), Section 6-2 of the Trustee Bylaws states:

*The Deputy Treasurer shall be nominated by the President of the University for appointment by the Trustees, and he shall be an officer of the University of Wyoming whose duties include responsibility for the receipt, custody, and expenditure of all funds of the University of Wyoming not held by the State Treasurer, and he shall exercise the same responsibility with respect to any funds or monies of the Trustees of the University of Wyoming.*

UW Regulation 1-1 B. (Organization of the University), Section B, part 3, paragraph 3 further states:

*In accordance with the Bylaws, the Vice President for Administration shall serve as the Deputy Treasurer of the Trustees of the University of Wyoming, and shall exercise all duties and responsibilities incident to this position, to include the receipt, custody and recording of all monies or funds payable to the Trustees, the Treasurer, the University, or any of its colleges, divisions, or departments; and the disbursement or investment of such funds and monies as authorized by the Trustees, such disbursements to be upon vouchers authorized and approved by the Vice President for Administration or by other designee when authorized.*

### PRESIDENT'S RECOMMENDATION

With the appointment of Janet Lowe as Interim Vice President of Fiscal Administration, it is hereby recommended that Janet Lowe be appointed as Deputy Treasurer of the Board of Trustees until a permanent Vice President for Administration is identified.

**6. Committee of the Whole- CONSENT AGENDA**

**Capital Construction**, Collins

- a. White Hall Asbestos and Regulated Material Abatement
- b. White Hall Renovation – Design-Bid-Build
- c. Buildings Sale and Removal – 1015 Lewis, 460 N. 11<sup>th</sup>, 462 N. 11<sup>th</sup> (on Michael B. Enzi STEM Facility Site)
- d. Building Sale and Removal – Greenhouse on NW corner of 22<sup>nd</sup> and Grand (at Gateway Center Site)

CHECK THE APPROPRIATE BOX(ES):

- Work Session  
 Education Session  
 Information Item  
 Other           Specify: Committee of the Whole (Consent Agenda)

**7. Committee of the Whole- CONSENT AGENDA**

**FY 2013 Operating Budget and 2013-2014 Biennium Budget**, Lowe/Richards

CHECK THE APPROPRIATE BOX(ES):

- Work Session  
 Education Session  
 Information Item  
 Other           Specify: Committee of the Whole (Consent Agenda)

**8. Committee of the Whole- CONSENT AGENDA**

**Revenue Bond Reimbursement Resolution**, Lowe

CHECK THE APPROPRIATE BOX(ES):

- Work Session  
 Education Session  
 Information Item  
 Other           Specify: Committee of the Whole (Consent Agenda)

## **9. Committee of the Whole- CONSENT AGENDA**

### **Appointments to the University of Wyoming Research Corporation (d.b.a. WRI) Board of Directors, Gern**

CHECK THE APPROPRIATE BOX(ES):

- Work Session
- Education Session
- Information Item
- Other           Specify: Committee of the Whole (Consent Agenda)

#### **BACKGROUND AND POLICY CONTEXT OF ISSUE:**

The University of Wyoming Research Corporation Board of Directors are appointed annually by the UW Board of Trustees annually to serve a one year term. Board members may serve multiple, one year terms of appointment. This appointment period ends in June 2013.

We recommend that the following individuals be appointed to the UWRC Board of directors.

- Dr. William A. Gern, Chairperson – is the Vice President of Research and Economic Development. Dr. Gern has done extensive work in the integration of research into economic development and is well versed in technology transfer and in federal/university research policy.
- Dr. Myron Allen – Provost and Vice President for Academic Affairs, University of Wyoming. He is the architect of the University's School for Energy Resources and an expert in the mathematics of heterogeneous fluid flow in porous media.
- Mr. Ronald Benson – of Houston, Texas, brings 30 years of management experience, including experience with natural gas and international oil companies. He now serves as a consultant with Haddington Ventures, LLC and as a member of the Board of Directors of Trans Texas Gas Corp.
- Mr. Ronald Collins – President of Pavement Technology, Inc., of Covington, Georgia, (in metro Atlanta). The company manufactures a broad line of laboratory sampling and testing equipment for the hot-mix asphalt and aggregate industry, which is sold through a worldwide distribution network
- Mr. Brent Erickson – is the Executive Vice President of the Biotechnology Industry Organization (BIO) of Washington, D.C. BIO, a trade association representing 1,100 biotechnology companies, academic institutions, state biotechnology centers and related organizations in 50 U.S. states and 31 other nations, provides biotechnology information, advocacy and business support.



- Mr. Rob Hurless – serves as Governor Freudenthal's Energy and Telecommunications advisor. He was formerly the chairman of the Wyoming Public Service Commission and publisher of the Casper Star-Tribune. He is active in economic development in the state and in regional electric utility planning activities. Mr. Hurless earned a Bachelor of Sciences in Chemistry and a Bachelor of Arts in History from Montana State University, an MA in Applied Economics from Stanford University and an MBA from Harvard University.
- Dr. Robert Ettema – is the Dean of the College of Engineering and Applied Sciences at the University of Wyoming. He was a professor at the University of Iowa College of Engineering for 25 years and headed the Department of Civil and Environmental Engineering for 7 years. His research interests are civil engineering hydraulics applied to problems and processes in water-resources engineering and diverse aspects of cold-regions engineering.
- Mr. Richard Willson – of Palm Harbor, Florida, is an attorney specializing in intellectual property and technology transfer, including licensing, patents and trademarks and invention stimulation, for large multinational chemical and petroleum companies.

**10. Committee of the Whole- CONSENT AGENDA**  
**Approval of Real Estate Acquisitions, Collins**

CHECK THE APPROPRIATE BOX(ES):

- Work Session
- Education Session
- Information Item
- Other           Specify: Committee of the Whole (Consent Agenda)

**1. INFORMATION ONLY ITEM**

**Progress Report/Change Orders, Collins/Lowe**

CHECK THE APPROPRIATE BOX(ES):

- Work Session
- Education Session
- Information Item
- Other            Specify:

**Capital Construction  
 Progress Report as of April 10, 2012**

The following gives an accounting of the progress and activity of construction and design since the last Trustees meeting. Also reported are approved change orders.

**PROJECTS IN CONSTRUCTION**

**1. Visual Arts Facility**

Construction Manager at Risk	G E Johnson Construction Company
	Jackson, WY
Guaranteed Maximum Price	\$26,673,930
Contract Substantial Completion Date	October 28, 2011
Extended	December 18, 2011

(In Thousands)	<b>Total</b>	<b>Admin</b>	<b>Constr</b>	<b>Design</b>	<b>Tech</b>	<b>FF&amp;E</b>	<b>Misc</b>	<b>Cntngcy</b>
Budget	36,350	1,076	26,964	3,236	712	2,860	215	1,287
Expended	31,082	643	26,145	3,168	45	1,042	39	0
Obligated	947	31	577	15	0	324	0	0
Un-obligated	4,321	402	242	53	667	1,494	176	1,287

Remarks      Testing and final adjustment of mechanical/electrical systems are ongoing throughout the building. Furniture and equipment continue to arrive.

**2. Energy Resource Center**

Construction Manager at Risk	G E Johnson Construction Company
	Jackson, WY
Guaranteed Maximum Price	\$18,926,514
Contract Substantial Completion Date	June 4, 2012

(In Thousands)	Total	Admin	Constr	Design	Tech	FF&E	Misc	Cntngcy
Budget	25,400	686	19,348	1,855	1,070	1,007	507	927
Expended	10,032	329	8,062	1,624	0	0	17	0
Obligated	12,001	146	11,286	231	0	0	0	338
Un-obligated	3,367	211	0	0	1,070	1,007	490	589

Remarks Exterior wall framing and installation of exterior wall systems are progressing. Work on interior wall systems and mechanical/electrical/plumbing systems is underway.

## CHANGE ORDERS

### 1. Visual Arts Facility

Item 1 BTU metering clarifications and add breakers	Add:	11,315
Item 2 Upgrade transformer efficiencies	Add:	61,806
Item 3 Add heater in Mech 235C	Add:	5,752
Item 4 Modifications to faucets and diffuser	Add:	5,036
Item 5 Modifications to metal panel entry wall	Add:	3,401
Item 6 Add closures between rooms	Add:	18,224
Item 7 Modifications to roofing	Add:	7,675
Item 8 Remove SMART components and purchase direct	Deduct:	7,197
Item 9 Additional data ports	Add:	9,362
Item 10 Mechanical revisions	Add:	20,393
Item 11 Add galvanized steel guardrail on patio	Add:	7,263
Item 12 Provide dishwasher	Add:	1,743
Item 13 Modify steam heat exchanger sequence	Add:	10,861
Item 14 Modify solar loop sequence	Add:	834
Item 15 Modifications to lighting	Add:	9,372
Item 16 Modify time switch load ratings	Add:	1,947
Item 17 Add polished concrete	Add:	233
Item 18 Modify outlets	Add:	706
<u>Total Change Order No. 14</u>	<u>Add:</u>	<u>168,726</u>

Item 1 Stack modifications	Add:	7,847
Item 2 Casework modifications	Deduct:	17,228
Item 3 Revisions to grading and landscaping	Add:	61,871
Item 4 Modifications to exhaust hoods	Add:	3,621
Item 5 Mechanical revisions	Add:	11,567
Item 6 Rework pivot walls in lobby	Add:	804
Item 7 Additional plaster traps	Add:	7,226
Item 8 Add power to reception desk	Add:	475
Item 9 Modifications to stainless steel table	Add:	834

Item 10 Modifications to transfer grilles	Add:	3,314
Item 11 Retrofit explosion vent kit	Add:	14,383
Item 12 Casework modifications	Add:	451
Item 13 Modifications to outlets	Deduct:	429
Item 14 Additional pressure sensors	Add:	2,524
Item 15 Modifications to lighting control	Add:	3,714
Item 16 Modifications to air grilles and sound boots	Add:	2,069
Item 17 Additional circuits and fused disconnects	Add:	2,774
Item 18 Additional I beam hooks	Add:	484
Item 19 Modifications to curb cuts along 22 <sup>nd</sup> street	Add:	1,849
Item 20 Add wheel stops in parking area	Add:	5,172
Item 21 Additional soap and towel dispensers	Add:	<u>1,212</u>
<u>Total Change Order No. 15</u>	Add:	114,534

Item 1 Replace damaged occupancy sensors	Add:	1,921
Item 2 Add exterior salt kiln enclosure	Add:	82,942
Item 3 Modification to dark room	Add:	8,183
Item 4 Modification to insulation	Add:	17,102
Item 5 Modifications to sink	Add:	1,238
Item 6 Add gates	Add:	1,716
Item 7 Clean up costs from owner move in to present	Add:	28,376
Item 8 Modifications to beams	Add:	7,823
Item 9 Add wood base	Add:	1,070
Item 10 Modifications to sprinkler heads	Add:	2,443
Item 11 Add door holds	Add:	2,595
Item 12 Modifications to sound insulation	Add:	<u>1,759</u>
<u>Total Change Order No. 16</u>	Add:	157,168

**Statement of Contract Amount**

Original Contract	\$26,673,930
Change Orders 1-16	<u>48,357</u>
Adjusted Contract	\$26,722,287
	Add 51 calendar days

**2. Energy Resource Center**

**Statement of Contract Amount**

Original Contract	\$18,926,514
Change Orders 1 – 5	<u>+ 612,030</u>
Adjusted Contract	\$19,538,544

## 2. INFORMATION ONLY ITEM

### State Matching Funds for Endowments, Buchanan

CHECK THE APPROPRIATE BOX(ES):

- Work Session
- Education Session
- Information Item
- Other            Specify:

### STATE MATCHING FUNDS FOR ATHLETICS

There have been none.

### STATE MATCHING FUNDS FOR ACADEMIC FACILITIES

#### Marathon Oil

This is to inform you regarding approval for Wyoming Legislative Matching Funds for a pledge of \$1,000,000.00 from Marathon Oil for an allocation yet to be determined related to the School of Energy Resources. Marathon Oil has a prior academic facility state match of \$250,000.00 to the School of Energy Building Project Fund and endowment state matches of \$750,000.00 to various allocations.

Marathon Oil is an entity.

### STATE MATCHING FUNDS FOR ENDOWMENTS

#### ANONYMOUS DONOR

This is to inform you regarding approval for Wyoming Legislative Matching Funds for a pledge of \$25,000.00 from an ANONYMOUS DONOR for the Wyoming Geographic Alliance Fund. This DONOR has prior endowment state matches of \$498,500.00 to various allocations.

### **3. INFORMATION ONLY ITEM**

#### **Development Report, Blalock**

CHECK THE APPROPRIATE BOX(ES):

- Work Session
- Education Session
- Information Item
- Other            Specify:

#### **BACKGROUND AND POLICY CONTEXT OF ISSUE:**

The UW Foundation has agreed to report on donor giving to the University of Wyoming Board of Trustees.

#### **WHY THIS ITEM IS BEFORE THE BOARD:**

This report is before the board to advise them of the most current giving totals.

#### **COMMENTS:**

There are two spreadsheets within the FY 2012 Monthly Giving Report through March 2012. The first includes all gifts, while the second focuses on annual fund gifts. Both tables are broken down by the unit receiving the gifts.

**University of Wyoming Foundation  
FY 2012 Monthly Giving Report through March  
All Gifts**

FUND	Current Month Gifts Received		FY 2012 to date								FY 2011 Commitments YTD	
	DONORS	GIFTS	Cash & Cash equivalent			New Commitments YTD				STATE MATCHING	DONORS	GIFTS
			DONORS	OUTRIGHT	GIK	PLEDGE PMTS	NEW PLEDGES	PLANNED GIFTS	TOTAL			
AGRIC	63	\$102,310	715	\$1,232,801	\$317	(\$731,000)	\$1,120,000	\$121,000	\$1,743,118	\$250,000	850	\$10,282,859
AHC	21	\$1,330	357	\$88,734	\$722,500	(\$16,350)	\$50	\$0	\$794,934	\$0	320	\$208,393
ALUMNI	20	\$1,775	285	\$50,010	\$0	\$0	\$0	\$0	\$50,010	\$0	0	\$0
A & S	181	\$66,947	1955	\$1,379,105	\$18,654	(\$621,122)	\$424,420	\$420,001	\$1,621,058	\$410,000	2109	\$2,954,841
ATHLETICS	1215	\$407,319	4940	\$2,605,377	\$365,318	(\$701,770)	\$565,000	\$150,000	\$2,983,926	\$25,000	5263	\$3,823,874
BUSINESS	72	\$34,061	762	\$901,226	\$7,000	(\$264,230)	\$85,000	\$451,667	\$1,180,662	\$4,975	871	\$2,155,889
EDUCATION	104	\$84,409	838	\$593,991	\$0	(\$340,000)	\$700,000	\$3	\$953,994	\$710,000	766	\$766,093
ENERGY	0	\$0	28	\$1,033,134	\$0	(\$973,602)	\$1,125,000	\$0	\$1,184,532	\$1,174,816	27	\$143,103
ENGINEERING	92	\$34,742	1169	\$2,035,517	\$0	(\$1,391,651)	\$205,000	\$900,000	\$1,748,866	\$0	1327	\$1,859,398
IENR	7	\$33,675	72	\$323,690	\$0	(\$12,391)	\$0	\$0	\$311,299	\$50,000	78	\$68,111
HEALTH SCI	94	\$56,613	785	\$273,461	\$4,388	(\$42,000)	\$50,000	\$527,000	\$812,849	\$50,000	708	\$286,272
LAW	40	\$224,180	452	\$475,689	\$10,823	(\$325,519)	\$235,000	\$25,000	\$420,993	\$150,000	431	\$440,564
LIBRARY	16	\$3,725	159	\$544,479	\$1,220	(\$383,456)	\$0	\$226,667	\$388,909	\$0	159	\$79,464
OUTREACH	1382	\$83,608	6782	\$663,767	\$0	(\$12,123)	\$0	\$0	\$651,644	\$0	7224	\$681,164
STU AFFRS	52	\$1,620	991	\$59,811	\$5,227	\$0	\$0	\$90,000	\$155,038	\$0	843	\$111,442
UW ART MUS	12	\$2,185	657	\$156,278	\$84,804	\$0	\$0	\$500,000	\$741,082	\$0	615	\$414,178
UNIV. FUND	71	\$6,466	687	\$87,595	\$0	\$0	\$0	\$0	\$87,595	\$0	837	\$117,602
OTHER	37	\$147,777	520	\$1,393,628	\$0	(\$441,271)	\$1,672,000	\$166,667	\$2,791,024	\$50,000	644	\$7,469,806
<b>GIFTS NOT YET BOOKED</b>												
<b>TOTAL</b>	<b>3,301</b>	<b>\$1,292,741</b>	<b>18,738</b>	<b>\$13,898,292</b>	<b>\$1,220,252</b>	<b>(\$6,256,484)</b>	<b>\$6,181,470</b>	<b>\$3,578,004</b>	<b>\$18,621,533</b>	<b>\$2,874,791</b>	<b>19,298</b>	<b>\$31,863,054</b>
<b>Funds Not Deposited at Foundation</b>				<b>-\$2,368,812</b>								
<b>Foundation Cash In</b>				<b>\$11,529,480</b>								
<b>TOTAL YTD GOAL \$40,000,000</b>							<b>Total Count of All Planned Gifts</b>			<b>23</b>		
<b>**Total Donors does reflect Column totals. Donors may give to more than one unit/division.</b>												



**University of Wyoming Foundation  
FY 2012 Monthly Giving Report through March  
Annual Gifts**

FUND	FY 2012 GOALS	Current Month		FY 2012 to date		FY 2011 to same date		FY 2012 AF % of Goal
		DONORS	AMOUNT	DONORS	TOTAL	DONORS	TOTAL	
AGRIC	\$ 98,500	54	\$1,950	622	\$83,221	736	\$122,805	84.49%
AHC	\$ 45,000	14	\$665	335	\$53,472	288	\$38,141	118.83%
ALUMNI	\$ -	3	\$275	40	\$8,475	0	\$0	N/A
A & S	\$ 407,000	139	\$22,678	1736	\$318,793	1786	\$326,865	78.33%
ATHLETICS	\$ 2,600,000	1162	\$246,472	4709	\$1,557,038	4907	\$1,671,247	59.89%
BUSINESS	\$ 192,000	44	\$5,959	666	\$109,769	750	\$106,858	57.17%
EDUCATION	\$ 68,000	95	\$5,809	642	\$50,685	728	\$49,739	74.54%
ENERGY	\$ 2,500	0	\$0	14	\$7,717	18	\$6,853	308.67%
ENGINEERING	\$ 300,000	78	\$10,102	1015	\$213,953	1214	\$241,573	71.32%
IENR	\$ 58,000	6	\$10,675	60	\$35,799	73	\$27,611	61.72%
HEALTH SCI	\$ 126,000	87	\$7,795	725	\$108,895	626	\$102,731	86.42%
LAW	\$ 70,000	27	\$2,905	286	\$69,366	280	\$73,459	99.09%
LIBRARY	\$ 31,000	14	\$2,725	145	\$20,233	142	\$14,940	65.27%
OUTREACH	\$ 810,000	1380	\$80,608	6775	\$619,935	7209	\$628,486	76.54%
STU AFFRS	\$ 33,500	52	\$1,620	931	\$38,795	812	\$42,066	115.81%
UW ART MUS	\$ 49,000	10	\$1,985	176	\$36,658	196	\$32,632	74.81%
UNIV. FUND	\$ 93,500	71	\$6,466	684	\$87,495	830	\$99,999	93.58%
OTHER	\$ 16,000	23	\$1,507	284	\$44,925	243	\$52,427	280.78%
GIFTS NOT YET BOOKED								
<b>TOTAL</b>	<b>\$5,000,000</b>	3,148	\$410,196	17,329	\$3,465,222	17,981	\$3,638,432	69.30%
<b>**Total Donors do not reflect Column totals. Donors may give to more than one unit/division.</b>								