

**THE UNIVERSITY OF WYOMING
BOARD OF TRUSTEES' REPORT**

November 14-15, 2013

The Final Report can be found on the University of Wyoming Board of Trustees website at
<http://www.uwyo.edu/trustees/>

University of Wyoming Mission Statement (March 2009)

The University of Wyoming aspires to be one of the nation's finest public land-grant research universities. We serve as a statewide resource for accessible and affordable higher education of the highest quality; rigorous scholarship; technology transfer; economic and community development; and responsible stewardship of our cultural, historical, and natural resources.

In the exercise of our primary mission to promote learning, we seek to provide academic and co-curricular opportunities that will:

- Expose students to the frontiers of scholarship and creative activity and the complexities of an interdependent world;
- Ensure individual interactions among students, faculty, and staff;
- Nurture an environment that values and manifests diversity, free expression, academic freedom, personal integrity, and mutual respect; and
- Promote opportunities for personal growth, physical health, athletic competition, and leadership development for all members of the University community.

As Wyoming's only university, we are committed to outreach and service that extend our human talent and technological capacity to serve the people in our communities, our state, the nation, and the world.

The primary vehicles for identifying the specific actions and resource allocations needed to accomplish this complex mission are the University's strategic plans, revised periodically.

TRUSTEES OF THE UNIVERSITY OF WYOMING AGENDA
November 14-15, 2013

WORK SESSIONS

Annual Audited Financial Statements, Mai/Lowe.....	1
Fiscal Year 2014 Budget Authority Increase, Mai/Lowe	5
Tuition and Fees, Mai/Lowe	8
CAEDA Lease Update, Gern/Miller.....	9
UW Conference Center Update, Miller	11
UW Plaza Update, Miller.....	11
Joint Meeting with the Energy Resources Council (ERC)	12
Wyoming Governor’s Energy, Engineering, STEM Integration Task Force (WGEEESIT) Update, Gasem.....	13
Update on Administrative Searches, Sternberg	13
Academic Year 2013-2014 Goals Toward Being the #1 Land Grant, Sternberg	14

BUSINESS MEETING

Roll Call

Approval of Board of Trustees Meeting Minutes
September 12-13, 2013

Approval of Executive Session Meeting Minutes
September 12-13, 2013

Approval of “Special” Meeting Minutes
October 23, 2013

Reports

- ASUW
- Staff Senate
- Faculty Senate

Public Testimony

Committee of the Whole

REGULAR BUSINESS

1. Board Committee Reports
 - A. Academics and Research (McGinity) – Trustee Lauer, Committee Chair 15
 - B. Fiscal and Legal Affairs (Lowe) – Trustee Davis, Committee Chair 15
 - C. Student Affairs/Athletics/Administration/Information Technology (Axelson)
Trustee Willson, Committee Chair
 - D. Alumni Board – Trustee Lauer, Board Liaison
 - E. Foundation Board – Trustees Marsh and Willson, Board Liaisons
 - F. Haub School Environment and Natural Resources Board Trustee Davis, Board
Liaison.....
 - G. Energy Resources Council (ERC) – Trustee Palmerlee, Board Liaison.....

CONSENT AGENDA

1. Approval of Contracts and Grants, Gern 16

2. Personnel, McGinity 35

3. Approval of Revisions to UW Regulations: 46
 Revisions of UW Regulations 5-1 “Academic Personnel,” 5-808 “Post Tenure Review Policy,” 1-44 “Violence in the Workplace,” 5-35 “Faculty Dispute Resolution,” 5-35 “Appendix A and Appendix B,” and 5-408 “Guidelines for Establishing Academic Professionals”] – Miller

4. Construction Contracts (Easements) – Mai/Collins

- Approval of Access Easements at the Rogers Research Site, Albany Co., Wyoming 48
- Approval of Easement to Rocky Mountain Power for the Indoor Golf Practice Facility 51
- Approval of Increase in Easement Width to Rocky Mountain Power at 9th and Lewis 54
- Approval of Utility Easement from the City of Laramie for Lewis Steam Project..... 57

5. Approval of the Guaranteed Maximum Price (GMP) for the Arena-Auditorium Renovation, Phase 1 – Mai/Collins..... 60

6. Annual Audited Financial Statements – Mai/Lowe..... 62

7. Fiscal Year 2014 Budget Authority Increase – Mai/Lowe 62

8. Approval of Recommendation for Vice President for Administration William Mai as Deputy Treasurer of the UW Board of Trustees – Sternberg..... 63

New Business

Retreat Location

Old Business

Date of Next Meeting – January 16-17, 2014; Laramie, Wyoming

Adjournment

Information Only Items (see tab):

1. Progress Report/Change Orders, Mai/Collins..... 64

2. State Matching Funds, Sternberg/Blalock 68

3. Development Report, Blalock..... 69

AGENDA ITEM TITLE: Annual Audited Financial Statements, Mai/Lowe

CHECK THE APPROPRIATE BOX(ES):

- Work Session
- Education Session
- Information Item
- Other Specify: Committee of the Whole (Consent Agenda)

Jim Hearne, Partner, in the firm McGee, Hearne & Paiz, will lead a discussion about the University's annual audited financial statements and reports.

BACKGROUND AND POLICY CONTEXT OF ISSUE:

Accountability is the paramount objective of institutional financial reporting. It is the University's duty to be accountable to the public and to provide information that responds to the needs of three groups of primary users of general-purpose financial reports:

- the citizenry;
- the governing board, the legislature and oversight bodies; and
- investors and creditors.

Meaningful financial reports and accompanying notes provide information useful for assessing financial condition and results of operations, assisting in determining compliance with finance-related laws, rules, and regulations, and assisting in evaluating efficiency and effectiveness of operations. Preparation of these statements and reports are the responsibility of University management; however, it is the audit function that provides an external examination of these financial statements and reports.

The University of Wyoming prepares five separate financial reports that are audited by an independent public accounting firm. McGee, Hearne and Paiz, LLP of Cheyenne, Wyoming, was awarded a four-year engagement to conduct the annual audit for fiscal years 2010 through 2013, subject to evaluation of the audit firm's performance.

The five annual reports, their purpose, and deadlines for submission to regulatory agencies are:

- **Financial Report** - In accordance with required reporting standards, this report has three components: 1) management's discussion and analysis 2) institution-wide financial statements; and 3) notes to the basic financial statements. Required supplementary information is included in addition to the basic financial statements. The auditors express an opinion that these financial statements present fairly, in all material respects, the financial position of the University of Wyoming as of the fiscal year end, and the changes in its net assets and cash flows for the year then ended in conformity with accounting principles generally accepted in the United States of America.

The University of Wyoming is a component unit of the State of Wyoming. As such, the University's **Financial Report** is part of the Comprehensive Annual Financial Report prepared by the State Auditor's Office in accordance with W.S. 9-1-403 (a)(v). It must be submitted to the State by December 31st.

- **Compliance Report** – As part of obtaining reasonable assurance about whether the University's financial statements are free of material misstatement, the auditors perform tests of our compliance with certain provisions of laws, regulations, contracts and grants, noncompliance of which could have a direct and material effect on the determination of financial statement amounts. The auditors do not express an opinion on compliance with those provisions, instead they report that the results of their tests disclosed no instances of noncompliance that are required to be reported under Government Auditing Standards.

Non-federal entities that expend \$500,000 or more a year in federal awards are required by the United States Office of Management and Budget (OMB) to have a "single audit." The **Financial Report** and the **Compliance Report** together comprise a "single audit." This reporting package is submitted to the Federal Audit Clearinghouse within the earlier of 30 days after receipt of the auditor's report, or nine months after the end of the audit period. OMB Circular A-133 sets forth the standards for obtaining consistency and uniformity among federal agencies for the audit of States, local governments, and non-profit organizations expending federal awards. The Compliance Report is often referred to as the A-133 audit.

- **The Bond Funds Financial Report** – This financial report is a subset of the institution-wide financial statements and is prepared for the purpose of complying with the requirements of the University's bond ordinances. These statements include operations from the University Bookstore, the Student Union, Dining Services, Housing facilities, interest income on excess funds, government royalties, permanent land income, utility and telecommunications income. They also include the following plant funds: Project Acquisition Fund (unexpended funds), Capital Fund (renewals and replacement fund) and Retirement of Indebtedness Funds (reserve fund created by bond resolutions). The auditors express an opinion that these financial statements present fairly, in all material respects, the financial position of the Bond Funds as of the fiscal year end, and the changes in its net assets and cash flows for the year then ended in conformity with accounting principles generally accepted in the United States of America. They also provide "negative assurance" with respect to Debt Compliance; they state that nothing came to their attention that caused them to believe that the University failed to comply with the terms, covenants, provisions, or conditions, as listed in Article VIII, of each of the bond resolutions and the Financial Guaranty Agreement related to each of the Surety Bonds insofar as they relate to accounting matters.

The **Bond Funds Financial Report** is submitted to the Electronic Municipal Market Access (EMMA) system to comply with annual disclosure requirements. The audited report must be submitted within 170 days of the fiscal year end. The report is also submitted to Assured

Guaranty Municipal Corp. (insurer of the 2004 bond issue) and Ambac Assurance Corporation (insurer of the 2005 bond issue).

- **Wyoming Public Media Financial Report** – these financial statements present only the operations of Wyoming Public Media (WPM). The auditors express an opinion on the fair presentation of WPM's financial position and results of operations.

WPM's financial information is submitted in November to the Corporation for Public Broadcasting.

- **Intercollegiate Athletics Report** – This report constitutes an “agreed-upon procedures” engagement; its scope is less than that of an audit. The procedures include, but are not limited to, identifying all individual contributions that constitute more than 10% of total contributions, examination of cash receipts and disbursements, identification of unique internal control aspects and various inquiries related to compliance issues. The National Collegiate Athletic Association (NCAA) in their 2006 Financial Audit Guidelines suggests that these procedures and the auditors make no representation regarding the sufficiency of the procedures. This engagement is solely to assist the University in complying with NCAA Constitution 6.2.3.1.

PRIOR RELATED BOARD DISCUSSIONS/ACTIONS:

Annually – The Board accepts and approves Audited Financial Reports of the University of Wyoming each year.

WHY THIS ITEM IS BEFORE THE BOARD:

The Board of Trustees is responsible for assuring that the University's organizational culture, capabilities, systems and processes are appropriate to protect the financial health and the reputation of the University in audit-related areas. The presentation of annual audited financial reports is intended to inform the Board about significant matters related to the results of the annual audit so that they can appropriately discharge their oversight responsibility.

ARGUMENTS IN SUPPORT:

Annual financial reports serve various functions and have numerous audiences. They not only serve to inform the campus community of the institution's financial condition and results of operations, they are required by various governmental, regulatory and rating agencies; holders of the institution's bonds; and accrediting agencies. The Board of Trustees is held to a high standard of full financial disclosure, transparency and accountability: public acceptance and approval of the financial reports completes the audit cycle, helps tell the University of Wyoming's financial story and assists the Board in exercising their fiduciary responsibilities.

ARGUMENTS AGAINST:

None.

ACTION REQUIRED AT THIS BOARD MEETING:

It is recommended that the Board of Trustees of the University of Wyoming accept and approve the University Financial, Compliance, Bond Funds, Wyoming Public Media, and Intercollegiate Athletics Reports for the fiscal year ended June 30, 2013.

PRESIDENT'S RECOMMENDATION:

The President recommends approval of the audited financial reports as described above.

AGENDA ITEM TITLE: Fiscal Year 2014 Budget Authority Increase, Mai/Lowe

CHECK THE APPROPRIATE BOX(ES):

- Work Session
- Education Session
- Information Item
- Other Specify: Committee of the Whole (Consent Agenda)

University of Wyoming (Agency 067) Budget Authority Increases

BACKGROUND AND POLICY CONTEXT OF ISSUE:

Part 1: Summer School Revenue

The President is requesting a \$1,305,076 increase in the university's Fiscal Year 2014 operating budget authority to accommodate the carryover of earmarked UW Income Fund revenue that is generated by summer school activities. This is a non-recurring allocation of UW Income Fund revenue to Academic Affairs, which is subsequently distributed to support part-time salaries and support services costs.

Part 2: ASUW

ASUW is requesting a \$10,000 increase in the university's Fiscal Year 2014 operating budget authority to acquire design services for the ASUW Student Memorial Plaza. In March 2013, the ASUW Senate passed Senate Bill #2392 (attached), which earmarked \$125,000 from the ASUW Special Services Endowment to be used for a Student Memorial. Ten-thousand dollars (\$10,000) of the \$125,000 is designated for planning, scoping, and rendering of the project through an outside consultant. Should the design contemplate that the Memorial could be completed before June 30, 2014, ASUW will request additional budget authority later in the fiscal year, based on the design specifications.

PRIOR RELATED BOARD DISCUSSIONS/ACTIONS:

The Board approved the FY 2014 operating budget, which includes ASUW's budget, in May 2013. The Board increases the budget authority on an annual basis to recognize summer school revenue that is generated in excess of standard budget projections.

WHY THIS ITEM IS BEFORE THE BOARD:

The Trustees of the University of Wyoming, a constitutional body, are responsible for the "management of the university" (Wyoming Constitution, Article 7, 17).

The Board's approval of increases in the operating budget, including ASUW budget authority increases in excess of \$7,500, is required by Trustee Regulations and University budget procedures.

ARGUMENTS IN SUPPORT:

Allocation of UW Income Fund revenue from summer school activities is a routinely accepted budget practice that allows units to spend revenue generated by summer school activities.

The allocation of ASUW funds will support a project that will create a space for students to gather in remembrance of students who died while they were a member of the UW student body.

ARGUMENTS AGAINST:

None.

ACTION REQUIRED AT THIS BOARD MEETING:

Approval of the increase in the University's FY 2014 operating budget authority of \$1,305,076 for summer school activities and approval of ASUW's \$10,000 budget increase as described in this item.

PRESIDENT'S RECOMMENDATION:

The President recommends approval of the FY 2014 budget increases as proposed.

SENATE BILL #2392

TITLE: ASUW Special Services Endowment Allocation for the Planning, ~~Scoping,~~
Rendering, and Creation of the Student Memorial Plaza

DATE: March 7, 2013

AUTHORS: President Defebaugh, Vice President Kahler, and Chief of Staff Hayes

SPONSORS: Senators Messer, Perala, and Unangst



1. WHEREAS, the Associated Students of the University of Wyoming (ASUW) has been in
2. development of a "Student Memorial" for the last four years; and,
3. WHEREAS, the University of Wyoming is currently without a means in which to recognize,
4. honor, and memorialize loss of student life; and,
5. WHEREAS, the University of Wyoming and ASUW have a firm belief the these lost
6. students are always a UW Cowboy; and,
7. WHEREAS, the University of Wyoming and ASUW should highlight the Cowboy spirit that
8. these student embrace and live while attending, and then carry with them; and,
9. WHEREAS, the construction and renovation of Half Acre Gymnasium is beginning spring of
10. 2013, and this timing is appropriate to construct a student memorial adjacent to the Student
11. Union, Half Acre Gym, and Prexy's Pasture; and,
12. WHEREAS, the ASUW Student Services Endowment (Facilities Endowment) in FY '13
13. currently has a budget of \$119,245.72 with an additional \$125,000.00 earmarked from Senate
14. Bill #2345 for a total of \$244,245.72 with an additional interest rate of \$66,607.09 gained in
15. FY '13 for a total of \$310,852.81 expendable in FY '14.
16. THEREFORE, be it enacted by the Student Government of the Associated Students of the
17. University of Wyoming (ASUW), that the ear mark of \$125,000.00 from Senate Bill #2345

AGENDA ITEM TITLE: Tuition and Fees, Mai/Lowe

CHECK THE APPROPRIATE BOX(ES):

- Work Session
- Education Session
- Information Item
- Other Specify:

BACKGROUND AND POLICY CONTEXT OF ISSUE:

Vice President for Administration Bill Mai and Associate Vice President for Fiscal Administration Janet Lowe will provide the Board with a presentation regarding tuition and fees. Materials to be delivered at the meeting.

AGENDA ITEM TITLE: CAEDA Lease Update, Gern/Miller

CHECK THE APPROPRIATE BOX(ES):

- Work Session
- Education Session
- Information Item
- Other Specify:

BACKGROUND AND POLICY CONTEXT OF ISSUE:

On July 11, 2013 the University of Wyoming entered into an agreement with the Casper Area Economic Development Alliance (CAEDA) to take over and manage the Casper Area Innovation Center as part of the Wyoming Technology Business Center group. Within that agreement, CAEDA agreed to make an initial payment of \$300,000 for UW to cover approximately five years of UW's management of the Casper Area Innovation Center, which will be renamed the Wyoming Technology Business Center – Casper Area (WTBC-CA). In order to allow more time for the negotiations for the lease between the University and the owner of the property, the Amoco Reuse Agreement Joint Powers Board (ARAJBP), CAEDA agreed to an extension of the July 11 agreement to January 6, 2014 (originally set to terminate on November 20, 2013). Additionally, more time is necessary to allow for completion of commissioning of the new building, which is the responsibility of the ARAJBP but UW staff and a consultant are closely monitoring the process.

While negotiations are not complete, some of the key points of the lease between UW and the ARAJBP include:

- UW to lease the buildings for \$1 per year from ARAJBP until 2099 unless terminated earlier. The lease will include a provision allowing for earlier termination if sufficient funding to operate the incubator is not forthcoming.
- BP retains all liability for Existing Contaminated Media (the site was a former refinery)
- UW to use the buildings only as the business incubator in compliance with the EDA grant funding with no cost office space provided to ARAJPB sufficient to allow ARAJPB to continue its business activities
- UW is responsible for routine maintenance and insurance)

Additionally, at the time the Lease is executed there are several other key documents that will need to be executed or submitted for approval concurrently with the Lease. These documents include assignments of the anchor Tenant Lease/s between the ARAJPB and current resident companies, a template Client Services Agreement for WTBC-CA clients who sign up to participate in the Casper incubator, and documents relating to UW being added as a recipient in addition to Casper College and the ARAJPB to the original EDA grant funding (which has already been expended for construction of the building but requires that the building be used as an incubator for 20 years). It is expected that operation of the WTBC-CA will not require any additional funding from the general appropriation made by the Wyoming Legislature to the University of Wyoming. Rent, service contract payment by clients and annual payments from CAEDA will cover the operational costs of the WTBC-CA. (Currently only Dr. Benson's salary is an element of the existing

legislative appropriation to the University all other operating costs are derived from payments made by clients as described by their service contract with UW and through grants to the University of Wyoming to operate the WTBC.)

PRIOR RELATED BOARD DISCUSSIONS/ACTIONS:

The Board of Trustees has been advised of the negotiations with Casper Area Economic Development Alliance and the ARAJPB to become the operational entity for the incubator.

WHY THIS ITEM IS BEFORE THE BOARD:

The Board of Trustees must approve real property agreements.

ARGUMENTS IN SUPPORT:

This will allow UW to expand its business incubation services into the Casper area and support that community's economic development

ARGUMENTS AGAINST: None

ACTION REQUIRED AT THIS BOARD MEETING:

Authorize the Vice President of Research and Economic Development and/or Vice President of Administration to execute the final Sublease between UW and the ARAJPB. **PRESIDENT'S**

RECOMMENDATION: Approval

AGENDA ITEM TITLE: UW Conference Center Update, Miller

CHECK THE APPROPRIATE BOX(ES):

- Work Session
- Education Session
- Information Item
- Other Specify:

BACKGROUND AND POLICY CONTEXT OF ISSUE:

Vice President and General Counsel Rick Miller will provide the Board with a presentation regarding the UW conference Center.

AGENDA ITEM TITLE: UW Plaza Update, Miller

CHECK THE APPROPRIATE BOX(ES):

- Work Session
- Education Session
- Information Item
- Other Specify:

BACKGROUND AND POLICY CONTEXT OF ISSUE:

Vice President and General Counsel Rick Miller will provide the Board with a presentation regarding the UW Plaza.

AGENDA ITEM TITLE: Joint Meeting with Energy Resources Council (ERC)

[This will be a working dinner at the UW Conference Center, Salon C]

CHECK THE APPROPRIATE BOX(ES):

- Work Session
- Education Session
- Information Item
- Other Specify:

Thursday, November 14, 2013

6:00–8:00p.m. Joint Meeting with UW BOT (working dinner)

[UW Conference Center at the Hilton Garden Inn - Salon C]

Joint Discussion & Presentation

- Paul Lang (10 minutes) – State of SER
- Dave Palmerlee (5 minutes) – Observations
- Tim Considine – (15 minutes) Update of the Center of Energy Economics & Public Policy Projects
- Mark Northam (10 minutes)
 - Challenges & Opportunity of Leadership Changes
 - Tier 1 – implementation
 - Fund Raising – Private Sector Partnership

AGENDA ITEM TITLE: Wyoming Governor's Energy, Engineering, STEM Integration Task Force (WGEESIT) Update, Gasem

CHECK THE APPROPRIATE BOX(ES):

- Work Session
- Education Session
- Information Item
- Other Specify:

BACKGROUND AND POLICY CONTEXT OF ISSUE:

Interim Dean of the College of Engineering and Applied Science and Associate Provost Khaled Gasem will provide the Board with a presentation regarding the Wyoming Governor's Energy, Engineering, STEM Integration Task Force (WGEESIT).

AGENDA ITEM TITLE: Update on Administrative Searches, Sternberg

CHECK THE APPROPRIATE BOX(ES):

- Work Session
- Education Session
- Information Item
- Other Specify:

BACKGROUND AND POLICY CONTEXT OF ISSUE:

President Sternberg will provide the Board with an update regarding the current administrative searches.

AGENDA ITEM TITLE:

Academic Year 2013-2014 Goals Toward Being the #1 Land Grant, Sternberg

CHECK THE APPROPRIATE BOX(ES):

- Work Session
- Education Session
- Information Item
- Other Specify:

BACKGROUND AND POLICY CONTEXT OF ISSUE:

President Sternberg will present to the Board the goals necessary to become the #1 land grant.

1. Committee of the Whole: REGULAR BUSINESS
Board of Trustees Committee Reports

CHECK THE APPROPRIATE BOX(ES):

- Work Session
- Education Session
- Information Item
- Other Specify: Committee of the Whole (Regular Business)

A. Academics and Research Committee (McGinity)

Trustee Lauer, Committee Chair

B. Fiscal and Legal Affairs Committee (Mai/Lowe)

Trustee Davis, Committee Chair

C. Student Affairs/Athletics/Administration/Information Technology Committee (Axelson)

Trustee Willson, Committee Chair

D. Alumni Board

Trustee Lauer, Board Liaison

E. Foundation Board

Trustees Marsh and Willson, Board Liaisons

F. Haub School of Environment and Natural Resources Board

Trustee Davis, Board Liaison

G. Energy Resources Council (ERC)

Trustee Palmerlee, Board Liaison

1. Committee of the Whole- CONSENT AGENDA
Approval of Contracts and Grants, Gern

CHECK THE APPROPRIATE BOX(ES):

- Work Session
- Education Session
- Information Item
- Other Specify: Committee of the Whole (Regular Business)

BACKGROUND AND POLICY CONTEXT OF ISSUE:

Vice President for Research and Economic Development Bill Gern will provide the Board with a presentation regarding the approval of Contracts and Grants. Materials to be delivered at the meeting.

Sponsored Programs

The following sponsored programs are accepted subject to compliance with the University's policies on classified information and protection of human subjects. This report covers the period August 2013 through September 2013.

August 2013

Sponsor	Amount	Principal Investigator (PI)	Co-PI	Dept	Description
Allied Seed LLC	\$3,500	Moss, Gary		Ag Experiment Station	Niching of Carrot and Corn Salad Varieties for Seed Production in the Big Horn Basin
American Society of Plant Taxonomists	\$3,600	Brown, Gregory		Botany	Operational Support
Antarctic Research Trust	\$4,400	Tabak, Michael		Zoology	Developing Strategy for Eradication of the Invasive Rattus norvegicus from Offshore Islands in the Falkland Islands: Estimating Rates of Rat Migration Between Islands
BASF Corporation	\$9,000	Kniss, Andrew		Plant Sciences	Weed Science Research in Agronomic Crops
BASF Corporation	\$3,000	Stump, William		Plant Sciences	Pest Management for the Crops of the High Plains
BitCan Geosciences & Engineering Inc.	\$85,375	Yin, Shunde		Chemical/Petroleum Engr	Development of numerical solutions for isothermal and non-isothermal multiphase flow through elastoplastic porous media in petroleum geomechanics
Blue Cross Blue Shield of Wyoming	\$14,200	Beshkov, Hristiyan		Wyoming Survey & Analysis Center	Blue Cross Blue Shield Web Portal Maintenance
Calgary, University of	\$11,494	Ward, Naomi		Molecular Biology	Engineering a Strain of D. radiodurans R1 to Harbor the Optimized Gene XP13-4a ("The Xenotext")
Casper Area Economic Development Alliance, Inc.	\$450,000	Benson, Jonathon		Wyoming Technology Business Center	Wyoming Technology Busdiness Center, Casper; and Maintenance
Casper Rotary Club	\$11,500	Peacock, Cheryl		Housing	Phase II Rotary Park Improvements: Construct Trail and Observation Deck

Cheyenne Regional Medical Center	\$743,798	Krueger, Kem P		School of Pharmacy	Pharmacist-Contribution to Remotely Located Patient Care Teams
Community Foundation of Jackson Hole	\$12,500	Kauffman, Matthew		Zoology	Wyoming Atlas of Wildlife Migration
Consortium for Ocean Leadership	\$58,087	John, Barbara		Geology/Geophysics	USSSP IODP Expedition 345 Shipboard Science Support; and Exempt Portion
Dow AgroSciences	\$18,170	Baumgartner, Robert		UW Extension	Seed Trial with Limited Irrigation
FMC Corporation	\$11,500	Peacock, Cheryl		Housing	Wildlife-Friendly Fencing and Water Source Enclosures
George B. Storer Foundation	\$50,000	Kauffman, Matthew		Zoology	Wyoming Migration Initiative
Georgia, University of	\$13,634	Jarvis, Donald		Molecular Biology	Research Resource for Integrated Glycotechnology Year 3
Gowan Company LLC	\$10,000	Stump, William		Plant Sciences	Plant Disease Research in Potato and Sugar Beet
Grand Teton Natural History Assoc	\$10,000	Dillon, Michael		Zoology	Altitudinal Variation in Energy Reserves and Parasite Loads in Bumblebees
Iowa State University	\$12,358	Barker, Michael Gary		Civil Engineering	Bent-Plate Tub Girder Collaboration with Iowa State University
Lights on in Lander	\$7,000	Jenniges, Reese D		Wyoming Survey & Analysis Center	Evaluating the Elements of Lights On in Lander 2012
Metro Wastewater Reclamation District	\$169,899	Rahel, Frank		Zoology	Lab determination of reproductive success of South Platte River fish species in relation to WQCD winter temperature standard
Miller Coors LLC	\$12,000	Nachtman, Jerry		Ag Experiment Station	Barley Variety Evaluation
Monsanto Company	\$30,500	Kniss, Andrew		Plant Sciences	Weed Management Research and Education
Montana, State of	\$66,000	Dorssom, Michael		Wyoming Survey & Analysis Center	Montana Public Housing Tenant Survey
MPG Ranch	\$5,000	Hufford, Kristina		Ecosystem Science & Management	An Investigation of the Impacts of Seed Origin on Grassland Restoration Success
Natrona County	\$11,500	Peacock, Cheryl		Housing	Bridle Trail Signage and Misc. Repairs

New York Botanical Garden	\$11,400	Hartman, Ronald		Botany	Digitization TCN Collaborative: The Macrofungi Collection Consortium: Unlocking a Biodiversity Resource for Understanding Biotic Interactions, Nutrient Cycling and Human Affairs
North Carolina, Dare County	\$11,807	Smutko, Leonard		Ruckelshaus Inst of Environmental & Natural Resources	Oregon Inlet Situation Assessment
North Dakota Department of Health	\$17,443	Harnisch, Brian		Wyoming Survey & Analysis Center	Conduct 7-month follow-up surveys of enrollees in the North Dakota Quit Tobacco Program
North Dakota State Univ	\$39,480	Schmidt, Richard		Civil Engineering	Structural Health Monitoring of Highway Bridges Subjected to Overweight Trucks
North Dakota State Univ	\$41,210	Ng, Kam Weng		Civil Engineering	Implementation of Intelligent Compaction Technologies for Road Constructions in Wyoming
North Dakota State Univ	\$71,073	Young, Rhonda		Civil Engineering	Connected Vehicle Weather Data for Operation of Rural Variable Speed Limit Corridors
North Dakota State Univ	\$30,491	Tanner Eisenhauer, Jennifer		Civil Engineering	Using Recycled Concrete Aggregate in New Concrete Construction
North Dakota State Univ	\$195,963	Ksaibati, Khaled		Civil Engineering	MPC Graduate Assistantships; and Methodology for Developing a Replacement Strategy for County/City Owned Bridges; and Evaluation and Development of Livability and Sustainability Programs for Indian Reservations
Platte River Trails Trust	\$11,900	Peacock, Cheryl		Housing	Platte River Trails Trust and the City of Casper: Picnic Area and Adams Greenway Trails Refurbishment
Public Lands Endowment Trust	\$60,000	Tanaka, John		Ecosystem Science & Management	A Social and Economic Survey of Public Land Ranchers in the United States

Rijk Zwaan Production B.V.	\$4,500	Garcia, Axel		Plant Sciences	Radish Variety Trial
Scientific Simulations	\$242,138	Mavriplis, Dimitri J		Mechanical Engineering	STTR_Highly-Scalable Computational-Based Engineering Algorithms for Emerging Parallel Machine Architectures
Simplot, J.R.	\$2,000	Garcia, Axel		Plant Sciences	Corn Variety Trials
Society for Conservation Biology	\$73,500	Kauffman, Matthew		Zoology	David H. Smith Conservation Research Fellowship: Trophic Resource Portfolios: Incorporating Spatio-temporal Patterns of Species Abundance into Ecosystem-based Management of Mobile Consumers
Syngenta Crop Protection, LLC	\$7,500	Kniss, Andrew		Plant Sciences	Agronomic Crop Research
Syngenta Crop Protection, LLC	\$2,100	Garcia, Axel		Plant Sciences	Sugar Beet Variety Trail
US Dept of Ag APHIS	\$19,939	Collier, Timothy		Ecosystem Science & Management	Biocontrol Release and Monitoring Program for Wyoming Weeds
US Dept of Ag APHIS	\$54,615	Adamovicz, Jeffrey		Veterinary Science	Brucellosis Lab Testing 2013
US Dept of Ag FS	\$25,000	Tanaka, John		Ecosystem Science & Management	Synthesizing rangeland sustainability research and examining and communicating applicability and relevance to policy-makers and land managers
US Dept of Ag FS	\$1,500	Hartman, Ronald		Botany	Floristic Survey of the Beaverhead and Deerlodge National Forest
US Dept of Ag FS	\$11,500	Peacock, Cheryl		Housing	Bighorn National Forest_West Fork South Tongue River Riparian Restoration Project
US Dept of Ag FS	\$5,750	Peacock, Cheryl		Housing	Medicine Bow-Routt National Forest_Fencing on Pole Mountain
US Dept of Ag FS	\$11,500	Peacock, Cheryl		Housing	Bridger Teton National Forest_Grouse Mountain Whitebark Pine Restoration

US Dept of Ag FS	\$11,500	Peacock, Cheryl		Housing	Uinta-Wasatch-Cache National Forest: East Fork/Bear River Trail Maintenance, Evanston Ranger District
US Dept of Ag FS	\$10,000	Hartman, Ronald	Nelson, Burrell	Botany	Funding for the processing of collection for UW from work on the Shoshone NF.
US Dept of Ag NIFA	\$83,000	Russell, Justina		UW Extension	Wind River Federally Recognized Tribes Extension Program
US Dept of Defense Air Force	\$24,822	Heidel, Bonnie		Wyoming Natural Diversity Database	Colorado Butterfly Plant Survey 09
US Dept of Education	\$1,699,533	Wade, Michael		VP-Student Affairs	Year 3 College Access Challenge Grant Non-Exempt; and Year 4 State of Wyoming College Access Challenge Grant Program (CACGP); and Exempt
US Dept of Education	\$354,598	Terry, Michael		Student Educ Opportunity	Student Support Services_ 2013-2014 (Year 4 of 5: 2010-2015)
US Dept of Energy	\$832,000	Wang, Wenyong		Physics/Astronomy	DOE EPSCoR: Quantum Dot Sensitized Solar Cells Based on Ternary Metal Oxide Nanowires
US Dept of Energy	\$177,902	Wang, Zhien		Atmospheric Science	Improving Mixed-phase Cloud Parameterization in Climate Model with the ARCF Measurements
US Dept of Energy	\$185,000	Parkinson, Bruce		Chemistry	Studies of Photoinduced Electron Transfer from Dyes, Polymers and Quantum Confined Systems into Semiconducting Single Crystals
US Dept of Energy	\$199,978	Duan, Dongliang		Electrical Engineering	Advancing Synchrophaser Applications and Training through Academic-Industry Collaborations
US Dept of Energy	\$120,000	Parkinson, Bruce		Chemistry	A Combinatorial Approach to Realization of Efficient Water Photoelectrolysis

US Dept of Health and Human Services NIH	\$298,698	Laegreid, William		Veterinary Science	13-14 Elucidating the Cellular Mechanisms of Prion Propagation and Clearance for Devising New Targets for Intervention in Prion Disease
US Dept of Health and Human Services NIH	\$421,121	Sun, Qian-Quan		Zoology	Excitation and Inhibition Balance: Sensitive Period Plasticity
US Dept of Health and Human Services NIH	\$307,880	Ford, Stephen		Animal Science	Cortisol Regulation of Perinatal Adipose Tissue and Sheep Neonatal Leptin Peak
US Dept of Health and Human Services NIH	\$310,582	Levy, Daniel		Molecular Biology	Mechanisms of Steady-State Nuclear Size Regulation in Xenopus
US Dept of Health and Human Services NIH	\$201,875	Sun, Qian-Quan		Zoology	Mechanisms Underlying Maladaptive Organization of Long-range Epileptic Circuits
US Dept of Health and Human Services NIH HRSA	\$439,806	McKibbin, Christine L		Wyoming Inst for Disabilities	Wyoming Geriatric Education Center Year 4
US Dept of Health and Human Services NIH HRSA	\$95,700	Root-Elledge, Sandra Lee		Wyoming Inst for Disabilities	Family to Family in Wyoming; and Subcontract
US Dept of Health and Human Services NIH NIGM	\$17,179	Gatlin, Jesse		Molecular Biology	Mechanics of Bipolar Mitotic Spindle Assembly Year 2
US Dept of Health and Human Services NIH NINDS	\$212,250	Sun, Qian-Quan		Zoology	Inhibitory Circuits Underlying Long-range Sensorimotor Integration
US Dept of Interior BLM	\$20,000	Heidel, Bonnie		Wyoming Natural Diversity Database	Rare and Special Status Plant Species and Habitat Assessment 2012
US Dept of Interior BLM	\$12,000	Norton, Jay		Ecosystem Science & Management	Evaluation of Microcapillary Barriers and Local-source Seeds for Improved Reestablishment of High Desert Plant Communities on Drastically Disturbed Rangelands
US Dept of Interior BLM	\$10,000	Hartman, Ronald		Botany	Herbarium Imaging and Databasing of Pinedale BLM Specimens

US Dept of Interior FWS	\$5,175	Peacock, Cheryl		Housing	Seedskaadee National Wildlife Refuge: Conifer cutting, fish habitat construction and moose surveys
US Dept of Interior NPS	\$30,000	Larson, Mary		Anthropology	Moose Exhibit Site 48YE201: Final Data Recovery Report (Marcia Peterson, State Archaeologist)
US Dept of Interior NPS	\$25,000	Larson, Mary		Anthropology	Geological Studies on the North Entrance Road: Phase 2 Assessments (Marcia Peterson, State Archaeologist)
US Dept of Interior NPS	\$27,500	Harlow, Henry		Zoology NPS	UW-NPS GTNP Research Center Support 2013: Small Grants Program and Internship (UWY-179)
US Dept of Interior USGS	\$81,249	Lauenroth, William		Botany	Assessing Future Ecohydrological Suitability for Sagebrush Ecosystems
US Dept of Interior USGS	\$48,157	Hall, Robert		Zoology	Colorado River food web
US Environmental Protection Agency	\$12,000	Harlow, Henry		Zoology	How do Polar Bears cope with summer conditions altered by climate change
US Nat'l Aeronautics and Space Admin	\$750,000	Johnson, Paul E.		Atmospheric Science	Research Capacity Building Using a New Dual-Frequency Airborne Radar System in Support of NASA GPM and ACE Ground Validation Experiments
US Nat'l Science Foundation	\$4,000,000	Sylvester, Anne		EPSCOR	EPSCoR RII Track-1: Water in a Chnging West: The Wyoming Center for Environmental Hydrology and Geophysics; and Participant Support
US Nat'l Science Foundation	\$44,000	Banic, Amy		Computer Science	NSF GRFP Melissa Wiederrecht
US Nat'l Science Foundation	\$529,631	Leon, David		Atmospheric Science	The CONvective Precipitation Experiment--Microphysics and Entrainment Dependencies (COPE- MED)

US Nat'l Science Foundation	\$323,173	Hall, Robert		Zoology	Collaborative Research: Leaky Rivers: Nutrient Retention and Productivity in Rocky Mountain Streams Under Alternative Stable States
US Nat'l Science Foundation	\$25,000	Williford, Jason S		Mathematics	Rocky Mountain Summer School 2013: Algebraic Graph Theory
US Nat'l Science Foundation	\$463,795	Frick, Carl		Mechanical Engineering	CAREER: Characterization of Indentation-Induced Two-Way Shape-Memory Surfaces Made From Nickel-Titanium Alloys
US Nat'l Science Foundation	\$175,920	Geerts, Bart		Atmospheric Science	Collaborative Research: The Kinematics, Microphysics and Dynamics of Long-fetch Lake-effect Systems in OWLeS
US Nat'l Science Foundation	\$50,381	Riebe, Clifford		Geology/Geophysics	Collaborative Research: Spatial Variability in Eroded Sediment Size and Geomorphic Processes Inferred From Detrital Thermochronometry and Cosmogenic Nuclides
US Nat'l Science Foundation	\$216,000	Weinig, Cynthia		Botany	Baker NSF Post-doc Fellowship: Genome Wide Associations Between Anatomy, Crop-specific Allocation, and Water Use Efficiency
US Nat'l Science Foundation	\$184,821	Deshler, Terry		Atmospheric Science	Measurements of stratospheric aerosol size distributions and a new surface area climatology
US Small Business Administration	\$15,000	Kline, Jill		Wyoming Sm Bus Dev Ctr	Wyoming Small Business Development Center-FY2013
UW Dept of Justice BJS	\$70,946	Butler, Steven		Wyoming Survey & Analysis Center	Wyoming State Justice Statistics (SJS) Program (FY 2013-2014): Evaluation of Treatment Protocols for Parolees with Histories of Substance Abuse
Various Sponsors	\$50	Easton ,Marivern		WWAMI	Program Income for AHEC

Various Sponsors	\$1,441	Kline, Jill		Wyoming Sm Bus Dev Ctr	Market Research Center Program Income
Various Sponsors	\$12,940	Stewart, Larry Ray		Manufacturing Works	Program Income for FY14 NIST WY Manufacturing Extension Partnership
Various Sponsors	\$1,000	Kniss, Andrew		Plant Sciences	Improving the Sustainability of Dry Bean Production
Various Sponsors	\$1,400	Root-Elledge, Sandra Lee		Wyoming Inst for Disabilities	UAP Technical Assistance
Various Sponsors	\$150	Clarke, Pamela		School of Nursing	Various Nursing Schools Program Development
Various Sponsors	\$113	Redder, Alan		Wyoming Natural Diversity Database	Database Management
Various Sponsors	\$4,866	Hamerlinck, Jeffrey		Wyoming Geographic Info Sci Ctr	Spatial Data and Visualization Center
Washington State University	\$12,382	Ehmke, Cole		Ag Economics	Annie's Project in Wyoming_2013
Wyoming Arts Council	\$7,000	Bredehoft, Wendy E		Art Museum	Ann Simpson Artmobile Outreach 2013-014_Year 7
Wyoming Arts Council	\$7,000	Bredehoft, Wendy E		Art Museum	The Museum as Classroom--Inquiry Learning at the UAM
Wyoming Arts Council	\$2,000	Bredehoft, Wendy E		Art Museum	Summer Teaching Institute 2013
Wyoming Arts Council	\$5,485	Moldenhauer, Susan		Art Museum	Series of Contemporary Exhibitions and Related Programs
Wyoming Arts Council	\$5,098	Deckert, Jennifer Lynn		Theatre/Dance	19th Annual Snowy Range Summer Dance Festival
Wyoming Business Council	\$267,774	Kline, Jill		Wyoming Sm Bus Dev Ctr	Wyoming Procurement Technical Assistance Center
Wyoming Cultural Trust Fund	\$8,860	Ewig, Richard		American Heritage Ctr	Digitization of Pioneer Oral History Interviews and Wyoming Brand Books
Wyoming Dept of Agriculture	\$2,600	Whipple, Glen		UW Extension	Chaperones for 4-H youth dormitories at state fair
Wyoming Dept of Agriculture	\$5,300	Galey, Francis		Ag Dean	Potato Inspection and Seed Potato Certification

Wyoming Dept of Agriculture	\$2,600	Despain, Johnathan Carvel		UW Extension	Furnish Dorm Chaperones for Wyoming State Fair
Wyoming Dept of Health	\$78,942	Wambeam, Rodney		Wyoming Survey & Analysis Center	NonFed portion - Core Prevention Evaluation Services 2012-13
Wyoming Dept of Health	\$20,000	Leduc, Robert K.		Wyoming Survey & Analysis Center	Ranger Maintenance FY 2014
Wyoming Dept of Health	\$227,500	MacLean, William		Wyoming Inst for Disabilities	Administration of the Inventory for Client and Agency Planning (ICAP) Assessment Tool; and Federal Portion
Wyoming Dept of Health	\$75,000	Wambeam, Rodney		Wyoming Survey & Analysis Center	Wyoming Epidemiological Outcomes Workgroup 2014
Wyoming Game and Fish Dept	\$76,679	Chalfoun, Anna Lisa		Zoology	The effectiveness of sage-grouse core areas as an umbrella for non-game sagebrush SGCN
Wyoming Infrastructure Authority	\$7,500	Naughton, Jonathan		Mechanical Engineering	Wind Diversity Enhancement of Wyoming/Coilorado/California/Nebraska Wind Energy Projects
Wyoming State Engineer	\$15,000	Nicholson, Christopher		Civil Engineering	Wyoming Hydrographer Annual Reports Data Entry
Wyoming Wildlife - The Foundation	\$12,500	Beck, Jeffrey L		Ecosystem Science & Management	Red Desert Pronghorn Survival and Reproduction
Wyoming Wildlife - The Foundation	\$20,000	Goheen, Jacob		Zoology	Statewide Moose Habitat and Nutrition Project
Wyoming Wildlife - The Foundation	\$13,636	Dibner, Reilly		Zoology	Limitations Determine Lizard Distribution and Response
Wyoming Wildlife - The Foundation	\$22,500	Kauffman, Matthew		Zoology	Wyoming Atlas of Wildlife Migration
Wyoming Wildlife - The Foundation	\$20,000	Goheen, Jacob		Zoology	Sublette Moose Demography and Habitat Use
Wyoming Wildlife - The Foundation	\$15,000	Monteith, Kevin		Zoology	Nutritional Carrying Capacity of Mule Deer
Wyoming Wildlife - The Foundation	\$7,500	Kauffman, Matthew		Zoology	Beetle Kill and Sierra Madre Elk

Wyoming Wildlife and Natural Resource Trust	\$170,000	Monteith, Kevin		Zoology	Identifying How Habitat Treatments Influence Nutritional Condition, Reproduction, and Survival of Wyoming Range Mule Deer
Wyoming Workforce Services	\$49,492	Godby, Robert		Economics/Finance	Developing 2014 Prevailing Wage Estimates for Wyoming Department of Workforce Services

Sponsored Programs

TOTAL 8/2013	<u>\$17,092,804</u>	
Total From 7/2013	\$7,704,125	
Total Year to Date	7/2013 - 8/2013	\$24,796,929

September 2013

Sponsor	Amount	Principal Investigator (PI)	Co-PI	Dept	Description
Community Foundation of Jackson Hole	\$3,000	McClure, Amy		School-Extended Studies	Supporting Lifelong Learners
Consortium for Ocean Leadership	\$9,544	John, Barbara		Geology/Geophysics	Exempt Portion of USSSP IODP Expedition 345 Shipboard Science Support
Consortium for Ocean Leadership	\$11,999	Cheadle, Michael John		Geology/Geophysics	Exempt Portion of Drilling the ocean crust at Hess Deep, Pacific Ocean IODP Expedition 345
Dartmouth College	\$404,623	Weinig, Cynthia		Botany	Genetic Analysis of Natural Variation in the Control of Water Use Efficiency and Response to Drought Stress in Brassica Rapa
Deutsche Gesellschaft fur Internationale Zusammenarbeit (GIZ)	\$100,000	Barbier, Edward Burr		Economics/Finance	Economics of Land Degradation Initiative: Land Degradation, Less Favored Lands and the Rural Poor: A Spatial and Economic Analysis
Devon Energy	\$10,000	Beck, Jeffrey L		Ecosystem Science & Management	Factors Influencing Pronghorn Survival and Reproduction in South-Central Wyoming
Dow AgroSciences	\$24,500	Mealor, Brian		Plant Sciences	Biology and Management of Invasive Weeds in Rangelands
Dupont Pharmaceuticals Company	\$28,000	Mealor, Brian		Plant Sciences	Integrated Management of Invasive Weeds in Rangelands
Foundation for Applied Molecular Evolution, Inc.	\$24,125	Liberles, David		Molecular Biology	In silico and In vitro Investigation of Non-conserved Interactions Characteristics
Kansas State University	\$20,000	Franc, Gary		Plant Sciences	Great Plains Diagnostic Network-Wyoming Component 2012-2013

Kansas State University	\$9,360	Despain, Johnathan Carvel		UW Extension	2013 Air National Guard Camp
Pittsburgh, University of	\$2,500	Beauvais, Gary		Wyoming Natural Diversity Database	Yellowstone Field Course 2013
Schlumberger Foundation	\$38,880	Norton, Urszula		Plant Sciences	Faculty for the Future Fellowship: The Effects of Different Conservation Agriculture Practices on Sustainable Food Production in Eastern Kenya and Western Uganda
Southern California, University of	\$53,929	Chen, Po		Geology/Geophysics	Geoinformatics: Community Computational Platforms for Developing Three-dimensional Models of Earth Structures
Town of Mills, WY	\$11,500	Peacock, Cheryl		Housing	Fencing and Miscellaneous Projects for the Town of Mills, WY
US Dept of Ag APHIS	\$72,911	Latchininsky, Alexandre		Ecosystem Science & Management	Wyoming Cooperative Agriculture Pest Survey; and Nematode Survey; and Small Grains
US Dept of Ag FS	\$17,500	Keinath, Douglas		Wyoming Natural Diversity Database	Medicine Bow National Forest Amphibian Monitoring Project
US Dept of Commerce NIS	\$372,049	Stewart, Larry Ray		Manufacturing Works	Manufacturing Works: The Wyoming Manufacturing Extension Partnership (FY 14)
US Dept of Defense DLA	\$238,183	Jordan, Gregory		Wyoming Sm Bus Dev Ctr	Wyoming Procurement Technical Assistance Center Government Contracting Assistance
US Dept of Education	\$24,965	Carter, Joanna		Student Financial Aid	SEOG Grant 12-13
US Dept of Education	\$460,088	Pearce, Jayne		Student Educ Opportunity	Educational Opportunity Centers-EOC1(South)_Budget Year 3 (2013-2014)

US Dept of Education	\$214,080	Pearce, Jayne		Student Educ Opportunity	Educational Opportunity Centers-EOC2(North)_Budget Year 3 (2013-2014)
US Dept of Education	\$380,400	Carter, Joanna		Student Financial Aid	Student Educational Opportunity Grant 13-14
US Dept of Education	\$6,109	Carter, Joanna		Student Financial Aid	D-ED Teacher Education Assistance for College & Higher Ed (TEACH) 13-14
US Dept of Energy	\$514,977	Surdam, Ronald		School Enrgy Resource	Optimizing Accuracy of Determinations of CO2 Storage Capacity and Permanence, and Designing More Efficient CO2 Storage Operations: An Example from the Rock Springs Uplift
US Dept of Interior BLM	\$25,328	Estes-Zumpf, Wendy		Wyoming Natural Diversity Database	NLCS/RS Inventory of Sensitive Species in the Gardner Mountain Wilderness Study Area, WY
US Dept of Interior BLM	\$21,000	Hufford, Kristina		Ecosystem Science & Management	Testing the Relative Contribution of Genetic Diversity and Local Adaptation to Restoration Seeding Success
US Dept of Interior BLM	\$11,500	Peacock, Cheryl		Housing	Newcastle BLM Field Office: Whoopup Fire Rehabilitation
US Dept of Interior BLM	\$30,000	Tanaka, John		Ecosystem Science & Management	Sustainable Rangelands Roundtable
US Dept of Interior FWS	\$17,318	Albeke, Shannon		Wyoming Geographic Info Sci Ctr	Graham and White River Penstemon Distribution Assessment for the Uintah Basin, Utah
US Dept of Interior USGS	\$39,255	Walters, Annika		Zoology	Effects of Wyoming Range Energy Development for Native Fish Communities

US Dept of Interior USGS	\$2,500	McElroy, Brandon		Geology/Geophysics	Collaborative Research with USGS Nebraska Office in assisting with the evaluation of sediment transport in the Missouri River
US Dept of Interior USGS	\$83,000	Cornish, Todd		Veterinary Science	Population Level Impacts of Chronic Wasting Disease in Wyoming Mule Deer II
US Dept of Interior USGS	\$43,240	Kauffman, Matthew		Zoology	Influence of Energy Development on Mule Deer Migrations II
US Dept of Interior USGS	\$154,096	Kauffman, Matthew		Zoology	Technical Guidance for the Implementation of the Rapid Ecoregional Assessment Program
US Dept of Interior USGS	\$45,120	Chalfoun, Anna Lisa		Zoology	Influence of Energy Development on Non-Game Sagebrush Birds III
US Dept of Interior USGS	\$64,231	Rashford, Benjamin		Ag Economics	Mitigation by Design in Wyoming: Making the Connection Between Habitat, Disturbance, Restoration, and Resource Economics
US Nat'l Aeronautics and Space Admin	\$25,000	Heinz, Stefan		Mathematics	Turbulence Structure Preserving Unified and Dynamic Large Eddy Simulation of Separated Flows
US Nat'l Aeronautics and Space Admin	\$125,000	Johnson, Paul E.		Physics/Astronomy	Wyoming NASA Experimental Program to Stimulate Competitive Research (EPSCoR) Research Infrastructure Development (RID) Program
US Nat'l Aeronautics and Space Admin	\$35,061	Liu, Xiaohong		Atmospheric Science	Further Enhancement of the Cloud Prediction Capabilities of the GEOS-5 AGCM for Radiative and Aerosol Indirect Effect Studies
US Nat'l Aeronautics and Space Admin	\$173,554	Wang, Zhien		Atmospheric Science	Mixed-phase Cloud Property and Process Study with CloudSat, CALIPSO and other A-train Measurements

US Nat'l Science Foundation	\$165,155	Geerts, Bart		Atmospheric Science	The Cloud Microphysical Effects of Ground-based Glaciogenic Seeding of Orographic Clouds: new obserational and modeling tools to study an old problem
US Nat'l Science Foundation	\$9,905	Sims, Kenneth		Geology/Geophysics	Collaborative Research: A Geochemical Study of the Nature and Evolution of Mantle Upwelling Beneath Ross Island and its Relationship to Tectonics
US Nat'l Science Foundation	\$1,203,980	Wang, Zhien		Atmospheric Science	MRI: Development of a Multi-function Airborne Raman Lidar (MARL) for Atmospheric Process Studies; and Equipment
US Nat'l Science Foundation	\$254,754	Rodi, Alfred	Wang, Zhien	Atmospheric Science	King Air Natl Facility
Various Sponsors	\$250	Geiger, Milton E		UW Extension	Program Income for Energy Efficiency
Various Sponsors	\$1,000	Westlake, Laura Lea		Wyoming Inst for Disabilities	Vision Project
Various Sponsors	\$72	Kline, Jill		Wyoming Sm Bus Dev Ctr	Program Income for FY13 SBDC SBA
Various Sponsors	\$3,794	Kline, Jill		Wyoming Sm Bus Dev Ctr	Market Research Center Program Income
Various Sponsors	\$15,312	Stewart, Larry Ray		Manufacturing Works	Program Income for FY14 NIST WY Manufacturing Extension Partnership
Various Sponsors	\$1,000	Kniss, Andrew		Plant Sciences	Improving the Sustainability of Dry Bean Production
Various Sponsors	\$6,522	Root-Elledge, Sandra Lee		Wyoming Inst for Disabilities	Fee Book Income
Various Sponsors	\$1,574	Peterson, Eric M.	Schamber, Robin Anne	UW Extension	Various Sponsored Sublette County Extension Programs

Various Sponsors	\$230	Clarke, Pamela		School of Nursing	Various Nursing Schools Program Development
Various Sponsors	\$1,538	Redder, Alan		Wyoming Natural Diversity Database	Database Management
Various Sponsors	\$7,000	Hamerlinck, Jeffrey		Wyoming Geographic Info Sci Ctr	Spatial Data and Visualization Center
Wyoming Arts Council	\$4,473	Przygocki, James T.		Music	University of Wyoming String Project (2013-14)
Wyoming Cultural Trust Fund	\$1,405	Ewig, Richard		American Heritage Ctr	Wyoming in the Movies: Increasing Access to Wyoming's Motion Picture Heritage
Wyoming Dept of Agriculture	\$16,537	Kelley, Windy Kay		UW Extension	Rangeland Health Assessment Program: Sublette Allotment Cooperative Monitoring Project
Wyoming Dept of Agriculture	\$60,338	Miller, Myrna		Veterinary Science	Epizootic Hemorrhagic Disease Virus (EHDV) Serotype and Genotype Prevalence and Distribution in Wyoming
Wyoming Dept of Agriculture	\$64,662	Andrews, Gerard		Veterinary Science	Assessment of the Behavior of Brucella abortus Mutants and Role of their Disease Factors in Mice Engrafted with the Elk Immune System
Wyoming Dept of Enterprise Technology Services	\$100,000	Dorssom, Michael		Wyoming Survey & Analysis Center	Health Information Exchange (HIE) Cooperative Agreement Program Evaluation
Wyoming Dept of Health	\$160,000	Wambeam, Rodney		Wyoming Survey & Analysis Center	Comprehensive Evaluation of Wyoming Cancer Prevention and Control Programs and Partnerships for Success II Grant
Wyoming Dept of Health	\$269,913	Canen, Eric		Wyoming Survey & Analysis Center	Wyoming Prevention Needs Assessment Student Survey (PNA)

Wyoming Dept of Transportation	\$200,000	Ksaibati, Khaled		Civil Engineering	Wyoming Rural Road Safety; and NonFed Portion of Rural Road Safety Program
Wyoming Military Department	\$60,001	Weathermon, Rick		Anthropology	Phase II Archaeological Testing and Reevaluation of Archaeological Sites in the Training Areas of Camp Guernsey, Wyoming
Wyoming Office of Homeland Security	\$113,410	Samp, Michael		University Police	War Memorial Stadium and Arena Auditorium Camera Installation Phase I
Wyoming Office of Homeland Security	\$56,536	Samp, Michael		University Police	War Memorial Stadium and Arena Auditorium Camera Installation Phase II

Sponsored Programs

TOTAL 9/2013 \$6,727,785

Total From 7/2013 \$7,704,125

Total From 8/2013 \$17,092,804

Total Year to Date 7/2013-9/2013 \$31,524,714

2. Committee of the Whole- CONSENT AGENDA

Personnel, McGinity

CHECK THE APPROPRIATE BOX(ES):

- Work Session
 Education Session
 Information Item
 Other Specify: Committee of the Whole (Regular Business)

BACKGROUND AND POLICY CONTEXT OF ISSUE:

Interim Vice President of Academic Affairs Dick McGinity will provide the Board with a presentation regarding Personnel. Materials to be delivered at the meeting.

A. Items for Action Recommended by the President

APPOINTMENTS

1. Administrators

It is recommended to the Trustees of the University of Wyoming that the following administrators be approved as indicated.

Academic Affairs

<u>Name</u>	<u>Rank</u>	<u>Salary</u>	<u>Appointment Period</u>
Hagy, Alyson	Interim Associate Provost	\$170,004/FY	10/01/2013

Alyson Hagy received a B.A. from Williams College and an MFA from the University of Michigan. She joined UW in 1996 in the Department of English. Professor Hagy was tenured and promoted to Associate Professor in 2002 and promoted to Professor in 2008. Professor Hagy has been awarded the Extraordinary Merit Award and the John P. Ellbogen Meritorious Classroom Teaching award. Professor Hagy was also appointed as the Faculty Athletic Representative in 2006 and served as chair of second phase of the university-wide review of undergraduate curriculum.

Jones, David L.	Interim Associate Provost	\$170,004/FY	10/14/2013
------------------------	---------------------------	--------------	------------

David Jones received a B.S. from Westminster College, and M.A. and Ph.D. from the University of Iowa. He joined UW in 2001 in the Department of Communication Disorders. Dr. Jones was tenured and promoted to Professor in 2005. Dr. Jones has been awarded the Ellbogen Meritorious Classroom Teaching award and Mortar Board's "Top Prof." In addition to his teaching and research responsibilities, he has served on a number of college and university-wide committees including the University Calendar Committee and University Assessment Coordinators. He has served as the Associate Dean for Academic Affairs in the College of Health Sciences since 2007.

Administration

<u>Name</u>	<u>Rank</u>	<u>Salary</u>	<u>Appointment Period</u>
Mai, Bill	Vice President	\$238,008/FY	11/6/2013

A graduate of the University of Wyoming with a B.S. in Range and Wildlife Management (1987) and MBA with an emphasis in economics (1989), Bill Mai has spent his 24 year career in a variety of leadership positions with the State of Wyoming. Most recently, he has served as the Chief Economic Advisor and Legislative Liaison for Wyoming

Governor's Office. He has also served as a legislative analyst, senior legislative analyst, and manager of the Budget/Fiscal Division of the Legislative Services Office and administrator of the Economic Analysis Division of the Wyoming Department of Administration and Information. In these roles, he has served as co-chairman of the Consensus Revenue Estimating Group (CREG), the team charged with forecasting Wyoming's bi-annual revenue and earnings to the Wyoming General Fund and as lead staff to the Wyoming Legislature's powerful Joint Appropriations Committee. In these roles, he has helped guide the funding decisions related to operational and capital requests from the University of Wyoming, the community colleges, and economic development agencies in the State.

2. Faculty

It is recommended to the Trustees of the University of Wyoming that the following faculty appointments be approved as indicated.

College of Agriculture and Natural Resources

<u>Name</u>	<u>Rank</u>	<u>Salary</u>	<u>Appointment Period</u>
-------------	-------------	---------------	---------------------------

Department of Agricultural and Applied Economics

Jones Ritten, Chian	Assistant Professor	\$72,000/AY	08/20/2013
----------------------------	---------------------	-------------	------------

Chian Jones Ritten received a B.S. (2003) in Mathematics and Political Science from Northern Arizona University, an M.A. (2007) and a Ph.D. (2011) in Economics from Colorado State University. Dr. Jones Ritten has been a Postdoctoral Research Associate at the University of Wyoming since 2011.

Department of Animal Science

Bisha, Bledar	Assistant Professor	\$72,000/AY	08/20/2013
----------------------	---------------------	-------------	------------

Bledar Bisha received a D.V.M. (1999) in Veterinary Medicine from Agricultural University of Tirana, an M.S. (2004) and a Ph.D. (2009) in Food Science and Technology from Iowa State University. Dr. Bisha has been a Postdoctoral Fellow in Food Microbiology at Colorado State University since 2009.

Guo, Wei	Assistant Professor	\$72,000/AY	08/20/2013
-----------------	---------------------	-------------	------------

Wei Guo received a B.S. (1999) in Biotechnology, and a Ph.D. (2004) in Agrobiotechnology from the China Agricultural University. Dr. Guo has been a Research Scientist at the Medical School of the University of Wisconsin- Madison since 2009.

Department of Plant Sciences

Jabbour, Randa	Assistant Professor	\$47,004/AY	08/20/2013
-----------------------	---------------------	-------------	------------

Randa Jabbour received a B.S. (2003) in Biology from Rochester Institute of Technology, and a Ph.D. (2009) in Ecology from Pennsylvania State University. Dr. Jabbour has been a Postdoctoral Research Associate at the University of Maine since 2010.

College of Arts & Sciences

<u>Name</u>	<u>Rank</u>	<u>Salary</u>	<u>Appointment Period</u>
-------------	-------------	---------------	---------------------------

Chicano Studies Program

Fonseca, Vanessa R.	Instructor	\$63,000/AY	08/26/2013
----------------------------	------------	-------------	------------

Vanessa Fonseca received a B.A. (2005) in Spanish, an M.A. (2007) in Hispanic Southwest Studies from the University of New Mexico, and a Ph.D. (2013) in Spanish Cultural Studies from Arizona State University. Dr. Fonseca has been a Teaching Associate at Arizona State University since 2008. The title of this tenure-track position will convert to Assistant Professor upon receipt of documentation of degree completion.

Department of Communication & Journalism

Muddiman, Ashley Instructor \$60,000/AY 08/20/2013

Ashley Muddiman received a B.A. (2007) in Strategic Communication from Miami University, an M.A. (2009) in Communication from Wake Forest University, and a Ph.D. (2013) in Communication from the University of Texas, Austin. Dr. Muddiman has been a Research Assistant at the Annette Strauss Institute for Civic Life at the University of Texas since 2009. The title of this tenure-track position will convert to Assistant Professor upon receipt of documentation of degree completion.

Department of Criminal Justice

Boman, John H. IV Assistant Professor \$63,000/AY 08/20/2013

John Boman received a B.A. (2007) in Sociology/Criminology and History from Ohio University, an M.A. (2010) and a Ph.D. (expected 2013) in Criminology from the University of Florida. Dr. Boman has been a Research Assistant since 2012.

Department of Geology & Geophysics

Grana, Dario Assistant Professor \$84,000/AY 08/20/2013

Dario Grana received a B.S. (2003) in Mathematics, and an M.S. (2005) in Applied Mathematics from the University of Pavia, an M.S (2006) in Applied Mathematics from the University of Milano Bicocca, and a Ph.D. (expected 2013) in Geophysics from Stanford University. Dr. Grana has been a Research Assistant at Stanford University since 2010.

Parsekian, Andrew Assistant Professor \$72,000/AY 01/10/2014

Andrew Parsekian received a B.S. (2005) in Environmental Science from Dickinson College, and a Ph.D. (2011) in Environmental Science from Rutgers. Dr. Parsekian has been a Postdoctoral Scholar at Stanford University since 2011.

Department of Physics & Astronomy

Chien, TeYu Assistant Professor \$69,000/AY 08/20/2013

TeYu Chien received a B.S. (2001) in Physics from National Taiwan Normal University, and a Ph.D. (2009) in Physics from the University of Tennessee. Dr. Chien has been a Postdoctoral Fellow at Northwestern University since 2011.

Department of Sociology

Noy, Shiri Assistant Professor \$65,004/AY 08/26/2013

Shiri Noy received a B.A. (2005) in Environment and Development from McGill University, an M.A. (2007) and a Ph.D. (expected 2013) in Sociology from Indiana University. Dr. Noy has been an Instructor at Indiana University since 2010.

Department of Theatre & Dance

Huizinga, Sharon Assistant Professor \$58,008/AY 08/26/2013

Sharon Huizinga received a B.A. in Theatre and Dance from the University of Wyoming, and an M.F.A. in Lighting Design from the University of British Columbia. Ms. Huizinga has been a visiting lecturer at the University of Wyoming since 2012.

Department of Zoology & Physiology

Lanier, Hayley C Assistant Professor \$70,008/AY 08/20/2013

Hayley Lanier received a B.S. (2004) in Ecology and Evolutionary Biology from the University of Kansas, and a Ph.D. (2010) in Biological Sciences from the University of Alaska, Fairbanks. Dr. Lanier has been a Postdoctoral Research Fellow at the University of Michigan since 2010.

College of Engineering and Applied Science

<u>Name</u>	<u>Rank</u>	<u>Salary</u>	<u>Appointment Period</u>
-------------	-------------	---------------	---------------------------

Department of Chemical & Petroleum Engineering

Aryana, Saman	Assistant Professor	\$85,008/AY	09/30/2013
----------------------	---------------------	-------------	------------

Saman Aryana received a B.S. (2003) and an M.S. (2006) in Civil Engineering from the University of Texas, Arlington, and a Ph.D. (2012) in Energy Resources Engineering from Stanford University. Dr. Aryana has been a Reservoir Engineer for Occidental Petroleum Corporation in Houston Texas since 2012.

Department of Civil & Architectural Engineering

Ahmed, Mohamed Assistant Professor \$76,008/AY 08/20/2013

Mohamed Ahmed received a M.S. (2001) in Civil Engineering from Al-Azhar University, Cairo, Egypt; an M.S. (2009) and a Ph.D. (2012) in Civil Engineering from the University of Central Florida. Dr. Ahmed has been a Postdoctoral Research Associate at the University of Central Florida since 2012.

Wang, Liping Assistant Professor \$78,600/AY 08/20/2013

Liping Wang received a B.S. (2001) and an M.S. (2003) in HVAC Engineering from Xi'an University of Architecture and Technology, and a Ph.D. (2007) in Building Technology from National University of Singapore. Dr. Wang has been a Senior Scientific Engineering Associate at Lawrence Berkeley National Laboratory since 2012.

College of Health Sciences

<u>Name</u>	<u>Rank</u>	<u>Salary</u>	<u>Appointment Period</u>
-------------	-------------	---------------	---------------------------

Division of Communication Disorders

Cooley Hidecker, Mary Jo Assistant Professor \$64,008/AY 08/20/2013

Mary Jo Cooley Hidecker received a B.A. (1981) in Speech and Hearing Science and Psychology, an M.A. (1984) in Speech Pathology and Audiology from the University of Iowa, an M.S. (2011) in Epidemiology, and a Ph.D. (2004) in Audiology and Speech Sciences from Michigan State University. Dr. Cooley Hidecker has been an Assistant Professor at the University of Central Arkansas since 2009.

School of Pharmacy

He, Guanglong Assistant Professor \$78,000/AY 08/20/2013

Guanglong He received a B.S. (1986) in Physics from Anhui Normal University, an M.S. (1994) in Physics, Optics, Physical Chemistry from the Institute of Fine Optics Mechanics, Chinese Academy of Sciences, and a Ph.D. (1997) in Physical Chemistry from the Institute of Chemistry, Chinese Academy of Sciences. Dr. He has been an Associate Professor at The Ohio State University since 2008. The title of this tenure-track position will convert to Assistant Professor upon receipt of documentation of degree completion.

Wyoming Institute for Disabilities

Carrico, Catherine P Clinical Assistant Professor \$55,044/FY 10/01/2013

Catherine Carrico received a B.A. (2006) in Psychology from Austin College, and a Ph.D. (2012) in Psychology from the University of Northern Colorado. Dr. Carrico has been an Assistant Lecturer at the University of Wyoming since 2011.

3. Academic Professionals

It is recommended to the Trustees of the University of Wyoming that the following extended-term-track academic professional appointments be approved as indicated.

College of Agriculture and Natural Resources

<u>Name</u>	<u>Rank</u>	<u>Salary</u>	<u>Appointment Period</u>
-------------	-------------	---------------	---------------------------

Cooperative Extension Service

Fleenor, Sara Assistant Extension Educator \$46,620/FY 08/01/2013

Sara Fleenor received a B.S. (2000) in Agriculture Communications and an M.P.A. (2004) from the University of Wyoming. Ms. Fleenor has been a non-extended term Assistant Extension Educator in Crook County since 2012.

Vardiman, Rachel R. Assistant Extension Educator \$46,524/FY 08/01/2013

Rachel Vardiman received a B.S. (2005) in Range Management and Livestock Production from Chadron State College, and an M.A. (2013) in Youth Development from Michigan State University. Ms. Vardiman has been a non-extended term Extension Educator since 2006.

College of Arts & Sciences

<u>Name</u>	<u>Rank</u>	<u>Salary</u>	<u>Appointment Period</u>
-------------	-------------	---------------	---------------------------

Department of Art

Russel, Bailey	Assistant Lecturer	\$36,004/AY	08/26/2013
-----------------------	--------------------	-------------	------------

Bailey Russel received an A.B. (2001) in Art and Archeology from Princeton University, and an M.A. (2004) in Photography from New Your University. Mr. Russel has been a non-extended term lecturer in the Department of Art at the University of Wyoming.

Global and Area Studies Program

Bjorkenwall, Ruth Olga	Assistant Lecturer	\$26,004/AY	08/26/2013
-------------------------------	--------------------	-------------	------------

Ruth Bjorkenwall received a B.A. (1990) in Peace and Conflict Studies, and an M.A. (1994) in Sociology from the University of California, Berkeley. Ms. Bjorkenwall has been a non-extended term lecturer at the University of Wyoming since 2009.

CHANGES IN APPOINTMENTS

1. Administrators

It is recommended to the Trustees of the University of Wyoming that the changes in appointments for the following administrators be approved as indicated.

Academic Affairs

<u>Name</u>	<u>Rank</u>	<u>Salary</u>	<u>Appointment Date</u>
-------------	-------------	---------------	-------------------------

Ballenger, Nicole S.	Professor	\$134,424/AY	11/01/2013
-----------------------------	-----------	--------------	------------

Professor Ballenger ends her appointment as Associate Provost (2005-2013) and continues as a tenured Professor in the Department of Agriculture and Applied Economics. Dr. Ballenger's previous administrative appointments have included Department Head for the Department of Agriculture and Applied Economic (2004-2005).

Administration

<u>Name</u>	<u>Rank</u>	<u>Salary</u>	<u>Appointment Date</u>
-------------	-------------	---------------	-------------------------

Collins, Mark	Associate Vice President	\$155,004/FY	11/06/2013
----------------------	--------------------------	--------------	------------

Mr. Collins ends his appointment as Interim Vice President for Administration (2012-2013) and continues as Associate Vice President for Administration – Operations.

Lowe, Janet	Associate Vice President	\$150,000/FY	11/06/2013
--------------------	--------------------------	--------------	------------

Ms. Lowe ends her appointment as Co-Interim Vice President for Administration (2012-2013) and continues as Associate Vice President for Administration – Fiscal Administration.

GLOSSARY OF PERSONNEL TERMS

Academic Professional

Person other than faculty, engaged primarily in activities that extend and support the teaching, research, extension, and service missions of the University. There are four categories of academic professional: Extension Educators, Lecturers, Research Scientists, Post-Doctoral Associates. Individuals belonging to any of the first three categories can hold extended-term-track appointments under certain conditions.

Academic-Year (AY) Appointments

Appointments in which the regular period of employment includes the fall and spring semesters (nine months) of each year, with no accrual of vacation leave. Most faculty members and academic professionals hold AY appointments. AY employees typically receive their nine-month salaries and benefits spread out over the 12 months of each calendar year.

Adjunct Faculty

An adjunct appointment is the appointment of an individual to an academic unit that recognizes special discipline-related expertise but carries no financial obligation per se. Adjunct appointments can include qualified non-academic personnel or faculty with other academic affiliations. Adjunct appointments carry no rights to remuneration, tenure, or employment-related privileges and are normally for three years, with renewal possible.

Archives Faculty

This special faculty designation is reserved for archivists of the American Heritage Center. Archivists are responsible for acquiring original resource material to support academic research and teaching, organizing the material physically and intellectually, and teaching faculty, students and others to use these materials. There are three archivist ranks: Assistant Archivist, Associate Archivist, Archivist.

Assistant Professor

Indicates tenure-track appointments of individuals who hold the terminal degree in their discipline. This is the usual entry-level faculty rank.

Associate Professor

In addition to the qualifications of an Assistant Professor, Associate Professors have established a strong reputation in scholarship and teaching. Generally, faculty hired as Assistant Professors are promoted to the rank of Associate Professor at the time tenure is granted.

Clinical Faculty

Clinical faculty appointments allow experts in health-related fields to contribute to the training of UW students in allied disciplines. Clinical appointments are for at most one year at a time and carry no rights to tenure or extended terms. Clinical faculty members may be salaried members of the UW faculty, in which case their reappointment is subject to annual performance reviews. There are also adjunct clinical faculty appointments, which typically involve health-care professionals whose normal employment is outside the university. Adjunct clinical appointments carry no financial commitment from the University.

Emeritus Faculty

Tenured faculty who retire after long and distinguished service are eligible for emeritus status upon their retirement. The designation is honorary and carries no necessary commitment of space or remunerative employment. By analogy, extended-term academic professionals may be eligible for emeritus status upon retirement. (Emeritus=masculine, emerita=feminine, emeriti=plural)

Extended-Term Appointment

Academic professionals who have successfully completed probationary terms (usually six years) may receive six-year appointments called extended-term appointments. The term also applies to certain librarians and archivists who hold faculty status. These employees are eligible for extended-term appointments after five-year probationary periods. Extended terms for these employees are five years in length. Academic professionals, librarians, and archivists who are in the probationary period are on the extended-term-track.

Extension Educator

These academic professionals provide non-credit education to off-campus clientele through UW's Cooperative Extension Service. There are three ranks of Extension Educators: Assistant Extension Educator, Associate Extension Educator, Senior Extension Educator. All Extension Educators are in the College of Agriculture.

Faculty

Members of the permanent faculty include tenured or tenure-track Assistant Professors, Associate Professors, and Professors. Also included are tenure-track individuals who hold the rank of Instructor while completing their terminal degrees. Librarians and archivists also hold faculty status. They are eligible for extended terms instead of tenure.

Fiscal-Year (FY) Appointments

Appointments in which the regular period of employment is the entire calendar year, with accrual of annual vacation leave. Faculty members who hold administrative positions with summer responsibilities often have FY appointments for the duration of their administrative terms.

Full-Time Equivalent (FTE)

A measure of the time commitment expected of an employee or a set of employees. For example, two full-time employees or four half-time employees constitute 2.0 FTE.

Instructor

Tenure-track faculty member who does not yet hold the terminal degree in the appropriate field. UW requires verification of degrees in the form of official transcripts. UW does not grant tenure to faculty members who hold Instructor status at the time of the decision.

Leave of Absence Without Pay

Academic and administrative personnel may request leaves without pay for periods normally not in excess of one year, for purposes consistent with the professional enhancement of the employee and the advancement of the University's stature.

Lecturer

A category of academic professional involved largely in classroom instruction. Lecturers may be appointed to three ranks: Assistant Lecturer, Associate Lecturer, Senior Lecturer.

Library Faculty

This faculty designation applies to employees of the University Libraries. There are three ranks of library faculty: Assistant Librarian, Associate Librarian, Librarian.

Part-Time Employee

Any employee holding less than a full-time equivalent position (FTE less than 1.0).

Post-Doctoral Associate

Post-Docs are doctorally qualified academic professionals seeking greater professional development and research investigation, before obtaining permanent employment. Post-Doctoral appointments are temporary.

Probationary Faculty

This term refers to tenure-track faculty members who are working toward tenure and to academic professionals, library faculty, and archive faculty who are working toward extended-term contracts. The probationary term for academic professionals is generally six years, with yearly reviews and re-appointments. For librarians and archivists, it is five years. Faculty members who are on tenure-track appointments typically undergo the review for tenure in the sixth year of employment.

Professional Development Leave

Extended-term academic professionals who have completed six years of service at the University are eligible for professional development leave. The purpose of development leave is to enhance performance, to conduct special studies, or in some other way to enhance an individual's ability to contribute to the University. Development leaves can be granted with or without pay, are the prerogative of the academic unit in which the academic professional is located, and are generally similar to sabbatical leaves for faculty.

Professor

In addition to the qualification of an Associate Professor, "full" Professors have attained wide recognition in their professional fields for scholarship or other creative activity and have gained recognition for superior teaching and service.

Research Professor

Person with demonstrated superior capacity for research contributions, who is employed solely on external funds, and who holds a terminal degree. These appointments are made only at the Professor level and for not more than one year at a time. They are renewable.

Research Scientist

An academic professional whose primary responsibility is to conduct research. There are three ranks for Research Scientists: Assistant Research Scientist, Associate Research Scientist, Research Scientist.

Review Year

Year in which a reappointment review occurs for probationary employees. Normally, tenure-track faculty members undergo mandatory reappointment reviews in their first, second, and fourth years, with optional reviews in the third and fifth years. A review for the tenure decision occurs no later than the sixth year. An explanatory flow chart appears at the end of this glossary. In some cases employees start with credit toward a tenure or extended-term decision, based on their previous experience. In these cases the review year is the number of years of service at UW plus the number of years of credit.

Sabbatical Leave

Sabbatical leave may be granted to any tenured member of the faculty for the purposes of increasing professional competence and usefulness to the University. A minimum of six years service at the University must precede each period of sabbatical leave, although no right accrues automatically through lapse of time. Sabbatical leaves are normally granted for either a half year (full pay) or a full year (60% of salary). A faculty member who fails to return to the University after a sabbatical leave must repay the amount of compensation received from the University during the sabbatical. Faculty members may not use sabbatical leaves to pursue degrees.

Temporary Appointment

A short-term appointment without rights to tenure or extended term. Most temporary appointments are for one semester or one academic year.

Tenure-Track Appointment

Indicates a probationary faculty appointment prior to the award of tenure. Tenure-track positions generally require six years to tenure, but fewer years may be required based upon level of previous experience and accomplishments.

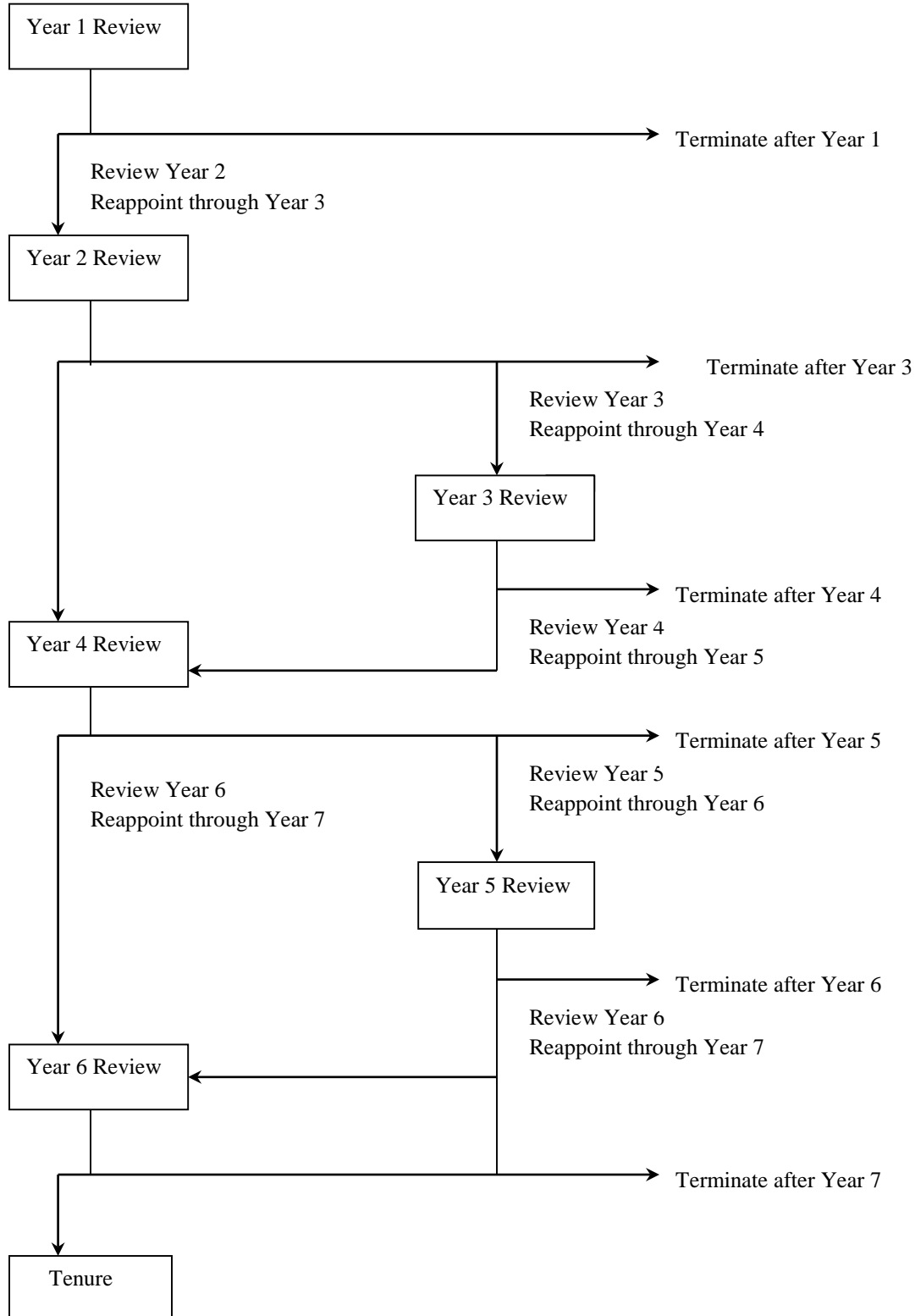
Terminal Degree

Typically the highest earned degree in a field of study. Examples include the Ph.D. (a variety of fields), the M.D. (medicine), the Ed.D. (education), M.F.A. (fine arts), M.Arch. (architecture), and J.D. (law).

Visiting Appointment

Indicates a non-permanent, non-tenure-track faculty appointment. Most visiting appointments are for one year.

FLOW CHART FOR FACULTY REAPPOINTMENTS



B. Items for Information

The changes in appointments and reappointments listed below are for the information of members of the Board of Trustees.

CHANGES IN APPOINTMENTS

1. Administrators

College of Arts & Sciences

<u>Name</u>	<u>Rank</u>	<u>Salary</u>	<u>Appointment Period</u>
-------------	-------------	---------------	---------------------------

Dean's Office

Brown, Gregory K.	Associate Dean	\$150,060/FY	08/26/2013
--------------------------	----------------	--------------	------------

Professor Brown is serving as Associate Dean in the College of Arts and Sciences. He continues as a tenured professor in the Department of Botany.

College of Education

<u>Name</u>	<u>Rank</u>	<u>Salary</u>	<u>Appointment Period</u>
-------------	-------------	---------------	---------------------------

Dean's Office

Rush, Leslie S.	Associate Dean	\$101,496/FY	09/01/2013
------------------------	----------------	--------------	------------

Professor Rush is serving as Associate Dean in the College of Education. She continues as a tenured Associate Professor in the Department of Secondary Education.

2. Faculty

College of Arts & Sciences

<u>Name</u>	<u>Rank</u>	<u>Salary</u>	<u>Appointment Period</u>
-------------	-------------	---------------	---------------------------

Department of Botany

Williams, David G.	Department Head	\$132,000/FY	09/01/2013
---------------------------	-----------------	--------------	------------

Professor Williams is serving as Department Head in the Department of Botany for a three-year term.

College of Business

<u>Name</u>	<u>Rank</u>	<u>Salary</u>	<u>Appointment Period</u>
-------------	-------------	---------------	---------------------------

Department of Management & Marketing

Kidwell, Roland E.	Interim Department Chair	\$156,720/FY	09/01/2013
---------------------------	--------------------------	--------------	------------

Professor Kidwell is serving as Interim Department Chair in the Department of Management and Marketing.

College of Education

<u>Name</u>	<u>Rank</u>	<u>Salary</u>	<u>Appointment Period</u>
-------------	-------------	---------------	---------------------------

Department of Educational Studies

Trent, Allen W.	Professor	\$95,412/AY	09/01/2013
------------------------	-----------	-------------	------------

Professor Allen ends his appointment as Associate Dean of Education and continues as a tenured professor in the Department of Educational Studies.

Department of Secondary Education

Welsh, Katherine A.	Department Head	\$74,760/FY	09/01/2013
----------------------------	-----------------	-------------	------------

Professor Welsh is serving as Department Head in the Department of Secondary Education. She continues as a tenured Associate Professor in the Department of Elementary and Early Childhood Education.

Department of Elementary & Early Childhood Education

Rush, R. Timothy Professor \$102,912/AY 09/01/2013

Professor Rush ends his appointment as department head in the Department of Professional Studies and continues as a tenured professor in the Department of Elementary and Early Childhood Education.

College of Engineering and Applied Science

Name Rank Salary Appointment Period

Department of Chemical & Petroleum Engineering

Alvarado, Vladimir Associate Department Head \$105,396/FY 08/01/2013

Professor Alvarado is serving as Associate Department Head in the Department of Chemical and Petroleum Engineering.

3. Committee of the Whole- CONSENT AGENDA

Approval of Revisions to UW Regulations, Miller

- **UW Regulation 5-1, “Academic Personnel”**
- **UW Regulation 5-808, “Post-Tenure Review Policy”**
- **UW Regulation 1-44, “Violence in the Workplace”**
- **UW Regulation 5-35, “Faculty Dispute Resolution”**
- **Appendix A and Appendix B to UW Regulation 5-35, “Faculty Dispute Resolution”**
- **UW Regulation 5-408, “Guidelines for Establishing Academic Professionals”**

CHECK THE APPROPRIATE BOX(ES):

- Work Session
 Education Session
 Information Item
 Other Specify: Committee of the Whole (Consent Agenda)

BACKGROUND AND POLICY CONTEXT OF ISSUE:

While there are a number of proposed changes to the above referenced UW Regulations, the proposed changes are to clarify already existing language in the regulations and to provide consistency among the UW Regulations. The proposed changes to UW Regulations 5-35 (and referenced appendices) and 5-408 would update the language in the regulations to reference the current regulatory structure. In addition, the proposed changes would add language to UW Regulation 5-408 clarifying that the procedures outlined in the regulation do not apply to the dismissal of probationary Academic Professionals or individuals on temporary appointments. Similarly, the proposed changes would add language to UW Regulation 5-1 clarifying that the procedures outlined in UW Regulation 5-801 do not apply to the dismissal of faculty members (1) because of bona fide financial exigencies, (2) because of program elimination, or (3) dismissal of faculty members for cause during the probationary period or those on temporary appointment. Finally, the proposed changes would add language to UW Regulation 1-44 clarifying that when an individual is terminated pursuant to UW Regulation 1-44, the UW Regulations governing dismissal of academic personnel or staff would still apply.

WHY THIS ITEM IS BEFORE THE BOARD:

The Board of Trustees must approve all changes to UW Regulations.

ARGUMENTS IN SUPPORT:

Consistent and clear regulations allow the University to better follow its processes.

ARGUMENTS AGAINST:

None

ACTION REQUIRED AT THIS BOARD MEETING:

The proposed changes in the Regulations appear on the consent agenda for approval by the Board.

4. Committee of the Whole- CONSENT AGENDA

Construction Contracts (Easements), Mai/Collins

- **Approval of Access Easements at the Rogers Research Site, Albany CO, Wyoming**
- **Approval of Easement to Rocky Mountain Power for the Indoor Golf Practice Facility**
- **Approval of Increase in Easement Width to Rocky Mountain Power at 9th and Lewis**
- **Approval of Utility Easement from the City of Laramie for Lewis Steam Project**

CHECK THE APPROPRIATE BOX(ES):

- Work Session
 Education Session
 Information Item
 Other Specify: Committee of the Whole (Consent Agenda)

Approval of Access Easements at the Rogers Research Site, Albany CO, Wyoming

BACKGROUND AND POLICY CONTEXT OF ISSUE:

The 320 acre Rogers Research Site (RRS) owned by the University of Wyoming is located approximately 30 miles northwest of Wheatland near Laramie Peak in northern Albany County, Wyoming. The property was bequeathed to the University in 2003 and is used as a forestry-research oriented site under the direction of the University's Agricultural Experiment Station in the College of Agriculture and Natural Resources. In the aftermath of the devastation from the 2012 Arapahoe wildfire that impacted the surrounding area and nearly the entire property, the fire has provided opportunities for additional research, outreach and instruction in terms of post-fire vegetation regeneration, fire ecology/restoration and fire remediation.

The RRS is surrounded on nearly all of three sides by United States Forest Service (USFS) property with State of Wyoming and private property bordering on the South. The University's preferred route to access the RRS is an unimproved, but well established road that crosses a private 40 acre tract of land after first crossing State of Wyoming land from Fletcher Park Road (County Road 716). The preferred route offers: the least amount of difficult terrain to traverse, thus extending the access season during winter months; access along the power line supplying electricity to the RRS; and access to both the reservoir and weather station at the RRS via a single route (see attached map). The road was considered for status as a county road in the 1950's, but apparently did not receive official designation. It's also shown as a road on the USFS maps. Both designations will continue to be evaluated for all segments of the road.

The University of Wyoming was recently made aware that the private 40 acre tract of land the University crosses to access the University's RRS was sold. The University has contacted, Mr. Mick Mickelson, the new landowner, to inquire as to whether there is interest in allowing the University to appraise and subsequently acquire an access easement across the property. The landowner has proposed to exchange access easements as consideration for granting an access easement to the University, as opposed to the University purchasing the easement.

The access easement to the University across the landowner's private property measures 30 feet wide and approximately 1,300 feet in length (.9 acres). The access easement to the landowner across University property measures 30 feet wide and approximately 2,500 feet in length (1.7 acres). The easements will grant non-exclusive use and maintenance of the roadways for access purposes to each party.

PRIOR RELATED BOARD DISCUSSIONS/ACTIONS:

None.

WHY THIS ITEM IS BEFORE THE BOARD:

It is the policy of the University of Wyoming that when a facility is no longer occupied, or upon request of the University administration, an evaluation of the subject facility or land shall be made to guide decisions regarding the retention or disposal of the facility and the land. The Vice President for Administration shall establish procedures, as appropriate, to determine necessary analyses to be used in the evaluation. Any evaluation regarding retention or disposal of real property shall be presented to the Trustees of the University of Wyoming for consideration.

Board approval is necessary for the University to acquire an access easement from the landowner across his land in exchange for granting an access easement across University land.

ARGUMENTS IN SUPPORT:

- The proposed access easement to the landowner is on an existing, well established roadway with little to no impact to the University's use of the RRS.
- The University, to date, has limited access through the property on the established road.
- UW's Agricultural Experiment Station has no concerns with granting the proposed access easement in exchange for an access easement to the University.
- The proposed exchange of easements is reasonable and mutually beneficial to both parties.
- The University will secure legal access to the RRS in perpetuity across the only private parcel along the route.
- The landowner has expressed a willingness to work with the University on other projects in the area, including spring development for wildlife and livestock.

ARGUMENTS AGAINST:

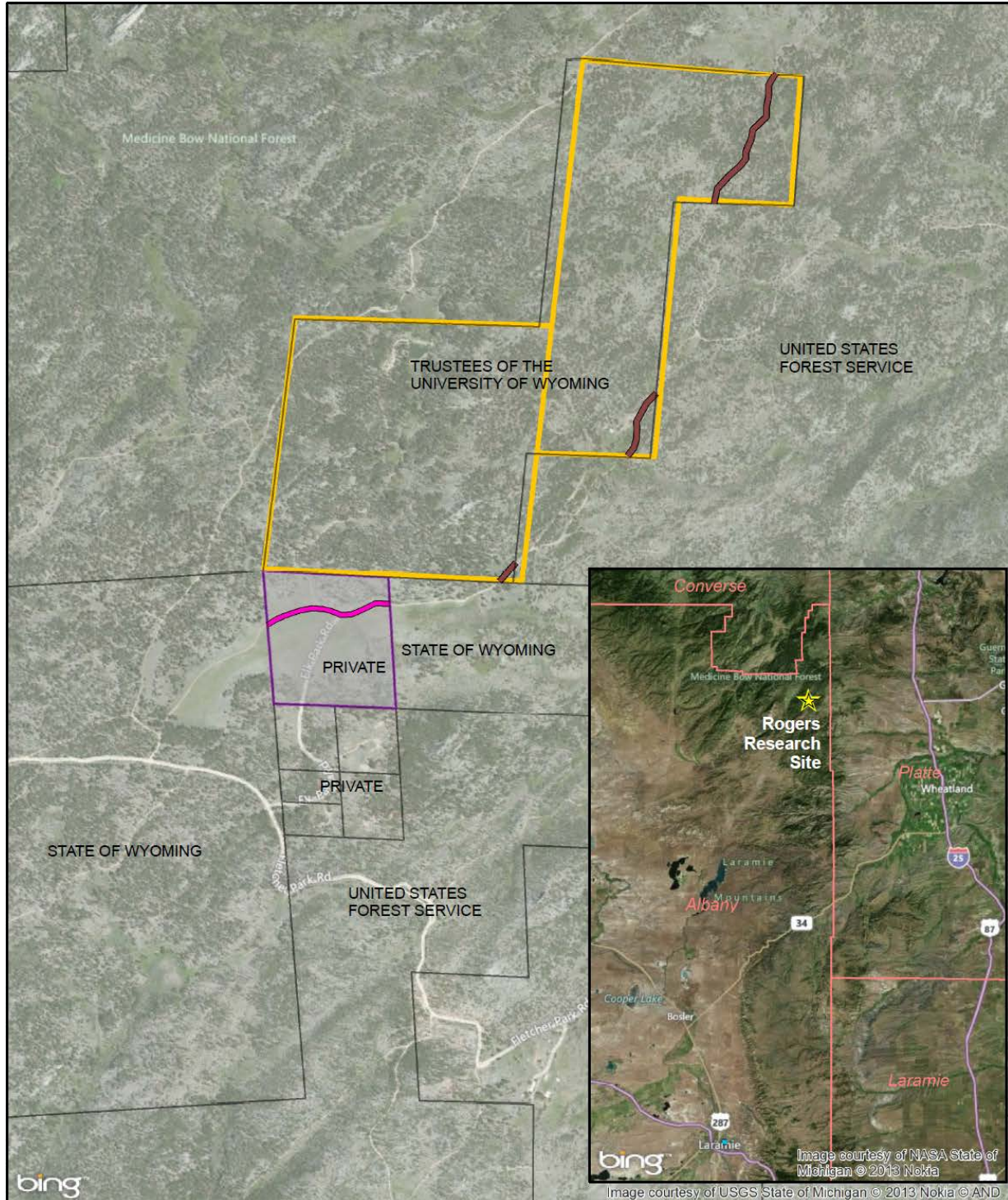
None.

ACTION REQUIRED AT THIS BOARD MEETING:

The Board's approval to grant a permanent access easement to Mr. Mickelson on University property at the Rogers Research Site in exchange for a permanent access easement across Mr. Mickelson's property.

PRESIDENT'S RECOMMENDATION:

It is recommended that the Board of Trustees of the University of Wyoming approve the exchange of access easements between the University and Mr. Mickelson.



PREPARED BY
 REAL ESTATE OPERATIONS
 DEPT 3314, 126 BUREAU OF MINES
 1000 E UNIVERSITY AVENUE
 LARAMIE, WY 82071

**ROAD EASEMENT FOR ROGERS RESEARCH SITE,
 UNIVERSITY OF WYOMING, LARAMIE, WY**

This map is provided as a visual aid only and is necessary or not presented. Dimensions and areas shown on this document generated using digital
 drafting software and do not reflect an actual field survey data. Any discrepancies of this document is not presented indicate prior estate records.



- Legend**
- Easement to UW
 - Easement to Landowner
 - UW Property
 - Private Property

Approval of Easement to Rocky Mountain Power for the Indoor Golf Practice Facility

BACKGROUND AND POLICY CONTEXT OF ISSUE:

Rocky Mountain Power (RMP) has requested an underground electrical line easement on University land to provide electric service to the Indoor Golf Practice Facility currently under construction and scheduled for completion in December of 2013. The easement provides access for RMP to maintain and repair the line and its associated appurtenances so long as the electrical line remains in use.

The easement will be 10 feet wide and approximately 800 feet in length. The underground electrical easement will be located along a proposed utility corridor that will also include gas, water, and sanitary sewer lines extending services from Willett Drive (see attached map). RMP has coordinated the location and route with University of Wyoming project representatives. Final routing is subject to minor field coordination to avoid as much of the existing chipping and practice greens as possible. The proposed easement will begin and terminate on University property.

PRIOR RELATED BOARD DISCUSSIONS/ACTIONS:

None.

WHY THIS ITEM IS BEFORE THE BOARD:

It is the policy of the University of Wyoming that when a facility is no longer occupied, or upon request of the University administration, an evaluation of the subject facility or land shall be made to guide decisions regarding the retention or disposal of the facility and the land. The Vice President for Administration shall establish procedures, as appropriate, to determine necessary analyses to be used in the evaluation. Any evaluation regarding retention or disposal of real property shall be presented to the Trustees of the University of Wyoming for consideration.

Board approval is necessary for the University to grant the electric line easement on University land to Rocky Mountain Power.

ARGUMENTS IN SUPPORT:

- Rocky Mountain Power has worked with University of Wyoming project representatives to locate the easement along the least obtrusive and most logical route.
- The proposed easement location is along the proposed utility corridor for the facility.
- University of Wyoming project representatives approve of the proposed easement location.
- Costs for the survey and easement description are covered by the project.
- The electric line provides electric service to a University of Wyoming facility.

ARGUMENTS AGAINST:

None.

ACTION REQUIRED AT THIS BOARD MEETING:

The Board's approval to grant a permanent electrical line easement to Rocky Mountain Power on University property to provide electric service for the Indoor Golf Practice Facility.

PRESIDENT'S RECOMMENDATION:

It is recommended that the Board of Trustees of the University of Wyoming approve the electrical line easement to Rocky Mountain Power.



PREPARED BY:
 REAL ESTATE OPERATIONS
 DEPT. 3214, 201 OLD MAIN
 1000 E. UNIVERSITY AVENUE
 LARAMIE, WY 82071
 307.766.2937, FAX: 307.766.4836

Produced by: JD, Reviewed by: JD, Date: 10/16/2013
 File path: \\L:\back\7\1011\1011\1011\1011\1011

**EASEMENT TO ROCKY MOUNTAIN POWER FOR INDOOR GOLF PRACTICE FACILITY
 UNIVERSITY OF WYOMING JACOBY GOLF COURSE, LARAMIE, WY
 10/16/2013**

This map is provided as a visual aid only and its accuracy is not guaranteed. Discussions and notes shown on this drawing were generated using digital drafting software and do not reflect an actual field survey data. Any duplication of this document is not permitted without prior written consent.



Legend	
	Proposed Easement Location
	Building, Construction
	UW Property

Approval of Increase in Easement Width to Rocky Mountain Power at 9th and Lewis

BACKGROUND AND POLICY CONTEXT OF ISSUE:

Rocky Mountain Power (RMP) has requested an increase in the width of an existing underground electrical line easement on University land as part of the West Campus Electrical Relocation project. Overhead electrical lines, poles and equipment on Lewis Street in the area of 9th to 11th streets have been re-routed and placed underground in anticipation of both the Michael B. Enzi Science, Technology, Engineering and Mathematics (STEM) Education Laboratory Facility and continued University expansion north of Lewis Street. The existing underground easement was granted in 2011 when the line was upgraded and buried as part of the Berry Center project. The existing electrical line within the existing easement is the primary electrical line service for west campus. The easement provides access for RMP to maintain and repair the line and its associated appurtenances so long as the electrical line remains in use.

The proposed increase in easement width from burying the electrical lines is an additional 5 feet on the south side of the existing easement, resulting in an overall easement of 15 feet wide and 159.18 feet long. The electrical line easement is located south of the Lewis Street sidewalk and is adjacent to the existing underground electrical line easement that runs east at the corner of 9th and Lewis (see attached map). RMP has coordinated the location of the easement for the project with University of Wyoming project representatives. The proposed easement begins and terminates on University property.

PRIOR RELATED BOARD DISCUSSIONS/ACTIONS:

None

WHY THIS ITEM IS BEFORE THE BOARD:

It is the policy of the University of Wyoming that when a facility is no longer occupied, or upon request of the University administration, an evaluation of the subject facility or land shall be made to guide decisions regarding the retention or disposal of the facility and the land. The Vice President for Administration shall establish procedures, as appropriate, to determine necessary analyses to be used in the evaluation. Any evaluation regarding retention or disposal of real property shall be presented to the Trustees of the University of Wyoming for consideration.

Board approval is necessary for the University to grant the electric line easement on University land to Rocky Mountain Power.

ARGUMENTS IN SUPPORT:

- Rocky Mountain Power has worked with University project representatives to locate the easement along the least obtrusive and most logical route.
- The proposed electrical line location is adjacent to an existing utility corridor and easement.
- University of Wyoming project representatives approve of the proposed location.
- Costs for the survey are covered by the Electrical Relocation project.
- The removal of the overhead lines, poles and equipment improve aesthetics in the area.

- The re-routing plans for continued electrical service as the University continues expansion north of Lewis.
- The electric line provides electric service to current and future facilities on west campus.

ARGUMENTS AGAINST:

None.

ACTION REQUIRED AT THIS BOARD MEETING:

The Board's approval to increase the width of the permanent electrical line easement to Rocky Mountain Power on University property to provide electric service for West Campus.

PRESIDENT'S RECOMMENDATION:

It is recommended that the Board of Trustees of the University of Wyoming approve the increase in width of the electrical line easement to Rocky Mountain Power.



PREPARED BY:
 REAL ESTATE OPERATIONS
 DEPT. 3314, 126 BUREAU OF MINES
 1000 E. UNIVERSITY AVENUE
 LARAMIE, WY 82071
 307.766.2937

Produced by J.D. Reviewed by J.D. Date: 10/16/2013
 File path: \\uvm\real\josh\josh\Trasac 2013.docx

120 60 0 120 Feet

ROCKY MOUNTAIN ELECTRICAL EASEMENT EXTENSION
UNIVERSITY OF WYOMING CAMPUS, LARAMIE, WY
 10/16/2013

This map is provided as a visual aid only and no warranty is made. Dimensions and areas shown on this drawing were generated using digital drafting software and do not reflect or indicate field survey data. Any duplication of this document is not permitted without prior written consent.



Legend	
	Existing Easement
	Proposed Easement Extension
	UW Property

Approval of Utility Easement across Greenhill Cemetery from the City of Laramie for the Lewis Street Steam Project

BACKGROUND AND POLICY CONTEXT OF ISSUE:

The 2009 Utility Master Plan (UMP) focused on condition, capacity and growth of UW utilities. Steam modeling from the UMP demonstrated that future steam loads on west campus cannot be adequately serviced from the existing system. The addition of the Energy Innovation Center (EIC) puts the existing system at capacity and any development north of Lewis Street adjacent to core campus requires an expansion of the steam distribution system to increase capacity. The Michael B. Enzi Science Technology Engineering and Mathematics (STEM) Education Laboratory will require this modification for the facility to operate effectively. The UMP recommended that a new steam line be run from the Central Energy Plant (CEP) to a tie-in point near 10th and Lewis Street to address this issue.

The University subsequently included the additional steam line as part of infrastructure improvements in the University's 2011-2016 Capital Facilities Plan and submitted an infrastructure improvement project as part of the 2013-14 biennial capital construction budget request to the legislature for the 2012 budget session. The legislature approved an appropriation of \$5 Million for the infrastructure improvements project to include steam and condensate lines and re-routing of the west campus electrical feed.

The Lewis Street steam and condensate project team is currently finalizing the engineering design which is planned to be completed by mid-November 2013. Following survey work for the project, the proposed route of the alignment for the lines is west from the tunnel near 19th Street across the paved east-west access road for the Greenhill Cemetery to 15th Street, then south for approximately 70 feet and then continuing west along the south side of the Lewis Street right of way to the northwest corner of the intersection of Lewis and 11th Streets and the future site of the Enzi STEM facility (see attached map). The proposed route is much shorter in distance than the original route by approximately 900 feet and the proposed route reduces the overall costs to the project for the steam and condensate lines by approximately \$1,000,000. The savings will allow the University to replace an old cast iron 16 inch City of Laramie water main, dating prior to 1949. This water main is one of multiple main feeds for the entire City water system. The University will also realize ongoing operational savings due to reduced line loss from the shorter route.

The University and City have met on numerous occasions regarding the project as part of the University's and City's comprehensive joint planning efforts regarding the transition plan for development along Lewis Street.

The easement portion of the route through Greenhill Cemetery will be approximately 10 feet wide and approximately 1,650 feet long. The easement provides access for the University to construct, operate, maintain and repair the lines and their associated appurtenances in the easement area so long as the utility lines remain in use.

A License Agreement with the City of Laramie will be executed for the lines within the public right of way of 15th and Lewis Streets. This will be done with the understanding that the City will one day vacate to the University that portion of Lewis Street between 11th Street and 15th Street, as reflected in an agreement signed in 2012.

PRIOR RELATED BOARD DISCUSSIONS/ACTIONS:

May 2011 – Trustees received the 2011-2016 Capital Facilities Plan.

July 2011 – Trustees approved the 2013-2014 biennium capital construction budget request for the University of Wyoming, Agency Code 067.

WHY THIS ITEM IS BEFORE THE BOARD:

It is the policy of the University of Wyoming that when a facility is no longer occupied, or upon request of the University administration, an evaluation of the subject facility or land shall be made to guide decisions regarding the retention or disposal of the facility and the land. The Vice President for Administration shall establish procedures, as appropriate, to determine necessary analyses to be used in the evaluation. Any evaluation regarding retention or disposal of real property shall be presented to the Trustees of the University of Wyoming for consideration.

Board approval is necessary for the University to acquire the utility easement from the City of Laramie across Greenhill Cemetery.

ARGUMENTS IN SUPPORT:

- The University and City have worked to locate the easement along the least disruptive and most direct route.
- The proposed line location is under a road and adjacent to existing utilities.
- The new steam and condensate lines will allow the University to “back-feed” loads from Wyoming Hall to Engineering that are currently being served through aging steam tunnels that have degrading structural integrity.
- The steam and condensate lines are essential for the continuing operation and physical development of the campus.

ARGUMENTS AGAINST:

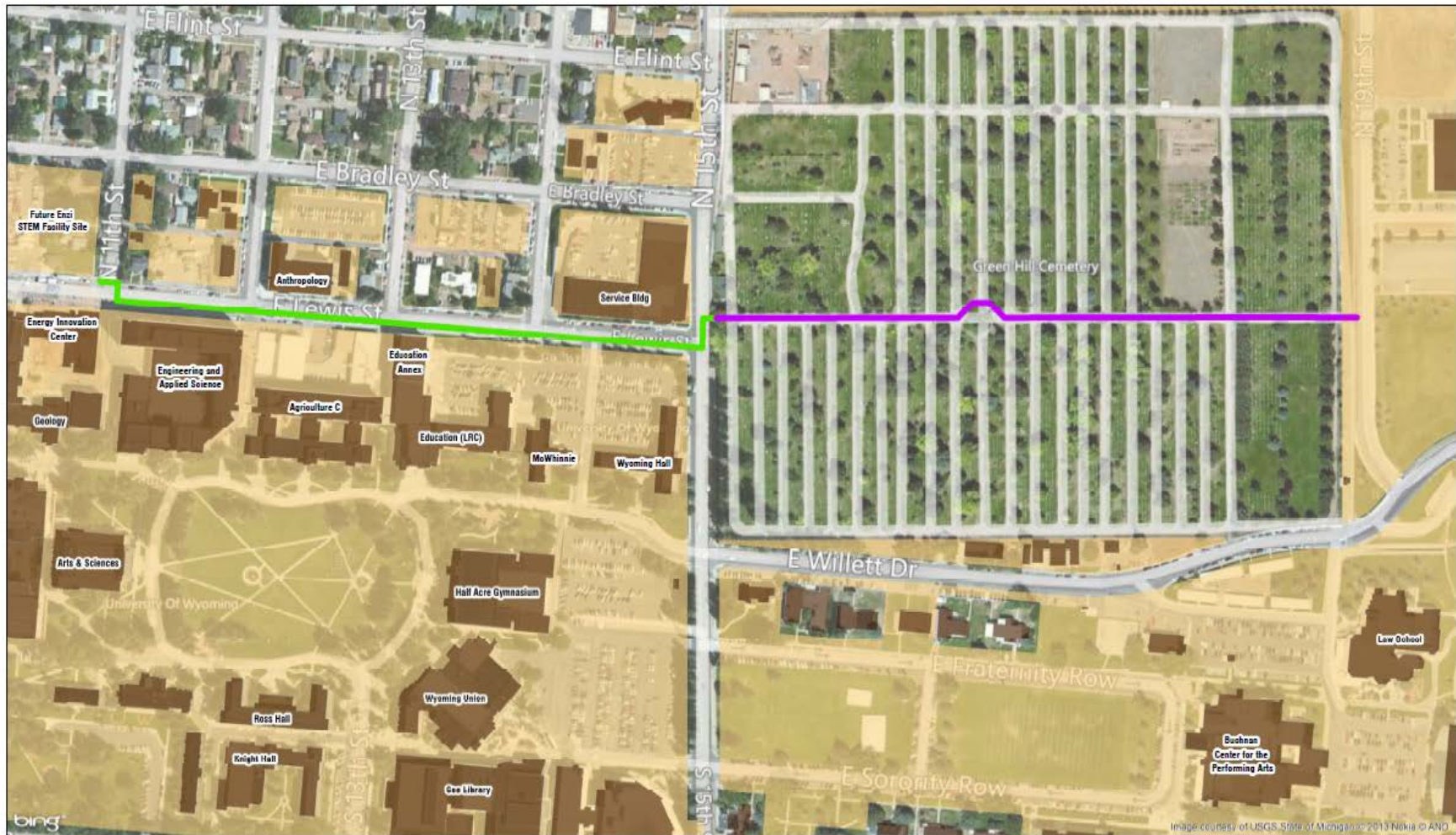
None

ACTION REQUIRED AT THIS BOARD MEETING:

The Board's approval to acquire a utility easement from the City of Laramie across Greenhill Cemetery for the Lewis Street Steam Project.

PRESIDENT'S RECOMMENDATION:

It is recommended that the Board of Trustees of the University of Wyoming approve acquisition of a utility easement from the City of Laramie for the project described above.



PREPARED BY:
 REGAL ENGINEERS & ARCHITECTS
 2001 S. UNIVERSITY AVENUE
 LARAMIE, WY 82001
 307.786.1921

Author(s): [Redacted]
 Date: 10/16/2013
 File path: \\[Redacted]\[Redacted]

**APPROVAL OF UTILITY EASEMENT FROM THE CITY OF LARAMIE FOR LEWIS STEAM PROJECT
 GREENHILL CEMETERY, LARAMIE, WY
 10/16/2013**

This map is provided as a visual aid only and its accuracy is not guaranteed. Dimensions and area shown on this drawing were prepared using digital mapping software and do not reflect an accurate field survey data. Any duplication of this document is not permitted without prior written consent.



- Legend**
- Utility License for Steam / Condensate Lines
 - Proposed Utility Easement for Steam / Condensate Lines
 - UW Building
 - UW Property

5. Committee of the Whole- CONSENT AGENDA

Approval of the Guaranteed Maximum Price (GMP) for the Arena Auditorium Renovation, Phase 1, Mai/Collins

CHECK THE APPROPRIATE BOX(ES):

- Work Session
 Education Session
 Information Item
 Other Specify: Committee of the Whole (Regular Business)

BACKGROUND AND POLICY CONTEXT OF ISSUE:

The Athletic Facilities Master Plan recommends two phases of renovations to the Arena-Auditorium. Phase 1 includes renovations to the basketball court, seating bowl, and locker room level; and a future Phase 2 may include building additions and renovations to the concourse and spectator services located on the concourse level.

The proposed Arena-Auditorium Renovation, Phase 1 will include expansion and replacement of the basketball court floor to provide re-orientation of the competition court; partial practice courts at the sides of the competition court; reconfiguration and replacement of the seating in the lower bowl to include up to approximately 4,600 upgraded seats; renovation of most of the current locker room level to create enhanced men's and women's locker rooms, sports medicine suite, strength and conditioning center, visiting team and officials' locker rooms, post-game interview room, etc.; installation of upgraded lighting, new videoboards, and sound system in the arena; and life-safety and ADA-compliance improvements.

The total project budget for the Arena-Auditorium Renovation, Phase 1 is \$12M. The project will be funded through \$5M in state funding and a combination of private and state match dollars for a total of \$12M. The preliminary project budget for the Arena-Auditorium Renovation Phase 2 is \$18M. The estimated total cost for the entire Arena-Auditorium Renovation project is \$30M.

Haselden Wyoming Constructors has been working with By Architectural Means and the Arena-Auditorium Renovation planning team as well as members of the Facilities Planning Office and Physical Plant to develop the Guaranteed Maximum Price (GMP) to be considered by the Board of Trustees at the November Meeting. The GMP proposed by Haselden Wyoming Constructors will be provided at the November Meeting. The project is ready to proceed to the final design and construction phase.

PRIOR RELATED BOARD DISCUSSIONS/ACTIONS:

- November 2012 – Board of Trustees approved the architect/engineering firm of By Architectural Means of Cheyenne, Wyoming in association with Sink Combs Dethlefs of Denver, CO.
- May 2013 – Board of Trustees approved the Construction Manager at Risk firm, Haselden Wyoming Constructors of Casper, Wyoming.

WHY THIS ITEM IS BEFORE THE BOARD:

Authorization is required from the Board of Trustees to begin the construction process by bidding all subcontracts and materials supplies while the construction documents are being completed for the construction start in March 2014.

ARGUMENTS IN SUPPORT:

There is sufficient funding through state matching funds and private donations to undertake this project.

ARGUMENTS AGAINST:

None

ACTION REQUIRED AT THIS BOARD MEETING:

Authorization to approve the construction contract with the Construction Manager-at-Risk, Haselden Wyoming Constructors of Casper, Wyoming, for the Arena-Auditorium Renovation, Phase 1 project.

PRESIDENT'S RECOMMENDATION:

It is recommended that the Board of Trustees of the University of Wyoming approve the GMP and authorize the construction contract with the Construction Manager-at-Risk, Haselden Wyoming Constructors, for the Arena-Auditorium Renovation, Phase 1 project.

6. Committee of the Whole- CONSENT AGENDA
Annual Audited Financial Statements, Mai/Lowe

CHECK THE APPROPRIATE BOX(ES):

- Work Session
- Education Session
- Information Item
- Other Specify: Committee of the Whole (Regular Business)

7. Committee of the Whole- CONSENT AGENDA
Fiscal Year 2014 Budget Authority Increase, Mai/Lowe

CHECK THE APPROPRIATE BOX(ES):

- Work Session
- Education Session
- Information Item
- Other Specify: Committee of the Whole (Regular Business)

8. Committee of the Whole- CONSENT AGENDA

Approval of Recommendation for Vice President of Administration Bill Mai as Deputy Treasurer of the UW Board of Trustees, Sternberg

CHECK THE APPROPRIATE BOX(ES):

- Work Session
- Education Session
- Information Item
- Other Specify: Committee of the Whole (Regular Business)

BACKGROUND AND POLICY CONTEXT OF ISSUE:

Article VI (Other Officers), Section 6-2 of the Trustee Bylaws states:

The Deputy Treasurer shall be nominated by the President of the University for appointment by the Trustees, and he shall be an officer of the University of Wyoming whose duties include responsibility for the receipt, custody, and expenditure of all funds of the University of Wyoming not held by the State Treasurer, and he shall exercise the same responsibility with respect to any funds or monies of the Trustees of the University of Wyoming.

UW Regulation 1-1 B. (Organization of the University), Section B, part 3, paragraph 3 further states:

In accordance with the Bylaws, the Vice President for Administration shall serve as the Deputy Treasurer of the Trustees of the University of Wyoming, and shall exercise all duties and responsibilities incident to this position, to include the receipt, custody and recording of all monies or funds payable to the Trustees, the Treasurer, the University, or any of its colleges, divisions, or departments; and the disbursement or investment of such funds and monies as authorized by the Trustees, such disbursements to be upon vouchers authorized and approved by the Vice President for Administration or by other designee when authorized.

PRESIDENT'S RECOMMENDATION

With the appointment of William Mai as Vice President of Administration, it is hereby recommended that William Mai be appointed as Deputy Treasurer of the Board of Trustees.

1. INFORMATION ONLY ITEM

Progress Report/Change Orders, Collins/Mai

CHECK THE APPROPRIATE BOX(ES):

- Work Session
- Education Session
- Information Item
- Other Specify:

BACKGROUND AND POLICY CONTEXT OF ISSUE:

**Capital Construction
 Progress Report as of October 15, 2013**

The following is an accounting of the progress and activity of construction and design since the last Trustees meeting. Also reported are approved change orders.

PROJECTS IN CONSTRUCTION

1. Energy Innovation Center

Construction Manager at Risk	G E Johnson Construction Company
	Jackson, WY
Guaranteed Maximum Price	\$18,926,514
Contract Substantial Completion Date	June 4, 2012
Extended	June 7, 2013

(In Thousands)	Total	Admin	Constr	Design	Tech	FF&E	Misc	Cntngcy
Budget	25,400	686	19,348	1,855	1,070	1,007	507	927
Expended	28,663	606	22,705	1,855	1,070	993	507	927
Obligated	94	80	0	0	0	14	0	0
Other Funding	3,357	0	3,357	0	0	0	0	0
Un-obligated	0	0	0	0	0	0	0	0

Remarks Labs on the first, second and third floors are operating for the currently planned research programs. Audio visual systems and 3-D visualization systems are complete and functioning. Supplemental additional work for users is nearing completion.

2. White Hall Renovation

Contractor	Sampson Construction Company, Inc.
	Cheyenne, WY
Bid Price	\$10,355,500
Contract Substantial Completion Date	Various phases – final phase August 7, 2015

(In Thousands)	Total	Admin	Constr	Design	FF&E	Misc	Cntngcy
Budget	13,935	789	11,185	553	440	311	657
Expended	12,651	439	10,884	553	389	311	75
Obligated	694	0	654	0	0	0	40
Other Funding	355	0	355	0	0	0	0
Un-obligated	945	350	2	0	51	0	542

Remarks Phase I is in warranty.

3. Half Acre Gymnasium Addition and Renovation

Contractor Groathouse Construction, Inc.
 Laramie, WY
 Guaranteed Maximum Price \$19,800,000
 Contract Substantial Completion Date January 15, 2015

(In Thousands)	Total	Admin	Constr	Design	Tech	FF&E	Misc	Cntngcy
Budget	26,919	912	19,800	2,922	974	974	637	700
Expended	2,709	462	1,082	1,150	0	0	15	0
Obligated	19,527	19	18,718	570	0	0	0	220
Un-obligated	4,683	431	0	1,202	974	974	622	480

Remarks Hazardous materials abatement and deconstruction for the phase I eastern addition has been completed. New construction is underway, led by earthwork and excavation for the foundation systems. Drilling and placement of foundation piers is underway. Structural steel erection is scheduled to commence mid-November. The historic western portion of Half Acre remains open and in service utilizing permanent and temporary provisional spaces.

4. Buchanan Center for the Performing Arts

Contractor Sampson Construction Company, Inc.
 Cheyenne, WY
 Guaranteed Maximum Price \$25,700,000
 Contract Substantial Completion Date October 31, 2014

(In Thousands)	Total	Admin	Constr	Design	Tech	FF&E	Misc	Cntngcy
Budget	35,000	960	25,778	3,545	1,208	2,450	500	559
Expended	6,477	414	3,463	2,600	0	0	0	0
Obligated	24,277	181	23,407	617	0	0	0	72
Other Funding	1,092	0	1,092	0	0	0	0	0
Un-obligated	5,338	365	0	328	1,208	2,450	500	487

Remarks Footing excavation, rebar placement and pouring concrete continues along with foundation walls. Grade beam exaction and forming is continuing. Steel erection will begin this week.

5. Outreach, Research and Extension Center at Sheridan (ORECS)

Contractor Fletcher Construction Company
 Sheridan, WY
 Bid Price \$1,581,000
 Contract Substantial Completion Date August 13, 2013

(In Thousands)	Total	Admin	Constr	Design	Tech	FF&E	Watt Bldg	Cntngcy
Budget	5,600	95	1,818	211	75	80	3,201	120
Expended	4,318	31	874	195	0	17	3,201	0
Obligated	1,022	0	944	16	0	0	0	62
Un-obligated	260	64	0	0	75	63	0	58

Remarks North offices and classrooms are in use. South lab, research offices and greenhouse are expected to be complete and occupied by mid November.

CHANGE ORDERS

1. Energy Innovation Center

Item 1 Additional costs to mobilize early	Add:	46,605
<u>Total Change Order No. 53</u>	Add:	46,605
Item 1 Provide Ivi lock guards on double doors	Add:	3,538
Item 2 Provide window film	Add:	855
Item 3 Replace scratched nozzles with adapters	Add:	510
Item 4 Replace micron filters for RO System	Add:	4,369
Item 8 Patch and repair drywall after removing signs	Add:	1,386
<u>Total Change Order No. 54</u>	Add:	10,658

Statement of Contract Amount

Original Contract	\$18,926,514
Change Orders 1 – 54	+ 5,735,048
Adjusted Contract	\$24,661,562
Additional 368 days	

2. White Hall Renovation

Statement of Contract Amount

Original Contract	\$10,355,500
Change Order 1-18	+ 1,182,196
Adjusted Contract	<u>\$11,537,696</u>

3. Half Acre Gymnasium Addition and Renovation

Statement of Contract Amount

Original Contract	\$19,800,000
Change Orders	<u>0</u>
Adjusted Contract	<u>\$19,800,000</u>

4. Buchanan Center for the Performing Arts

Statement of Contract Amount

Original Contract	\$25,700,000
Change Orders 1-4	<u>1,242,350</u>
Adjusted Contract	<u>\$26,942,350</u>

5. Outreach, Research and Extension Center at Sheridan (ORECS)

Statement of Contract Amount

Original Contract	\$1,581,000
Change Orders 1-4	<u>298,813</u>
Adjusted Contract	<u>\$1,879,813</u>

2. INFORMATION ONLY ITEM

State Matching Funds, Sternberg/Blalock

CHECK THE APPROPRIATE BOX(ES):

- Work Session
- Education Session
- Information Item
- Other Specify:

BACKGROUND AND POLICY CONTEXT OF ISSUE:

The following commitments meet the requirements for the Wyoming State Match.

STATE MATCHING FUNDS FOR ATHLETICS

This is to request approval for Wyoming Legislative Matching Funds for a pledge of \$25,000 from Tom and Renee Davis for the Arena Auditorium Renovation.

Mr. Davis graduated in 1976 from the College of Agriculture with a BS in Farm and Ranch Management. Mrs. Davis graduated in 1977 from the College of Health Sciences with a BSN in Nursing.

This is to request approval for Wyoming Legislative Matching Funds for a pledge of \$50,000 from Haselden Wyoming Constructors for the Arena Auditorium Renovation.

Haselden Wyoming Constructors is an entity.

STATE MATCH FUNDS FOR WYOMING RECLAMATION AND RESTORATION

This is to request approval for Wyoming Legislative Matching Funds for a pledge of \$100,000 from Mary Hay for the Wyoming Reclamation and Restoration Center.

Ms. Hay is a friend of the university.

STATE MATCHING FUNDS FOR ACADEMIC FACILITIES

Hoy, Kenneth and Diane

This is to request approval for Wyoming Legislative Matching Funds for a pledge of \$25,000.00 from Dr. and Mrs. Hoy for the College of Engineering and Applied Science Capital Facility Project.

Dr. Hoy graduated from the College of Health Sciences in 1950 with a BSP, and in 1995 received an honorary degree. Mrs. Hoy is a friend of the university.

3. INFORMATION ONLY ITEM
Development Report, Blalock

CHECK THE APPROPRIATE BOX(ES):

- Work Session
- Education Session
- Information Item
- Other Specify:

BACKGROUND AND POLICY CONTEXT OF ISSUE:

The UW Foundation has agreed to report on donor giving to the University of Wyoming Board of Trustees.

WHY THIS ITEM IS BEFORE THE BOARD:

This report is before the board to advise them of the most current giving totals.

COMMENTS:

There are two spreadsheets within the Monthly Giving Report through October 2013. The first includes all gifts, while the second focuses on annual fund gifts. Both tables are broken down by the unit receiving the gifts.

University of Wyoming, Foundation
 FY 2014 Monthly Giving Report through October
 All Gifts

Preliminary

FUND	Current Month Gifts Received		FY 2014 to date							STATE MATCHING	FY 2013 Commitments YTD	
	DONORS	GIFTS	Cash & Cash equivalent			New Commitments YTD					DONORS	GIFTS
			DONORS	OUTRIGHT	GIK	PLEDGE PMTS	NEW PLEDGES	PLANNED GIFTS	TOTAL			
AGRIC	152	\$52,453	438	\$327,232	\$0	(\$71,000)	\$30,000	\$251,875	\$538,107	\$0	254	\$197,487
AHC	89	\$10,235	143	\$28,482	\$47,925	(\$3,500)	\$0	\$0	\$72,907	\$0	79	\$37,520
ALUMNI	533	\$36,034	1415	\$88,514	\$0	\$0	\$0	\$0	\$88,514	\$0	1308	\$72,156
A & S	435	\$77,344	908	\$370,985	\$0	(\$43,650)	\$735,100	\$936,000	\$1,998,435	\$0	763	\$294,568
ATHLETICS	246	\$84,021	1389	\$1,039,173	\$240,401	(\$337,856)	\$350,000	\$200,000	\$1,491,717	\$200,000	1623	\$850,925
BUSINESS	147	\$78,570	381	\$183,268	\$0	(\$67,550)	\$0	\$0	\$115,718	\$0	251	\$69,878
EDUCATION	143	\$10,155	385	\$104,681	\$0	\$0	\$0	\$0	\$104,681	\$0	192	\$93,069
ENERGY	14	\$1,342,658	21	\$2,193,783	\$0	(\$2,188,333)	\$0	\$0	\$5,450	\$0	14	\$1,275
ENGINEERING	171	\$45,972	447	\$136,974	\$0	(\$472)	\$0	\$4,020,000	\$4,156,501	\$0	382	\$160,428
IENR	5	\$1,280	41	\$513,625	\$0	\$0	\$0	\$0	\$513,625	\$0	15	\$112,800
HEALTH SCI	110	\$24,650	268	\$352,557	\$0	(\$250,000)	\$50	\$0	\$102,607	\$0	377	\$91,883
LAW	46	\$15,430	129	\$49,940	\$0	(\$14,500)	\$0	\$0	\$35,440	\$0	161	\$477,290
LIBRARY	24	\$2,293	88	\$11,640	\$0	\$0	\$0	\$0	\$11,640	\$0	88	\$127,489
OUTREACH	2795	\$203,086	4354	\$362,254	\$0	(\$8,884)	\$0	\$0	\$353,370	\$0	4691	\$388,959
STU AFFRS	103	\$39,145	269	\$98,248	\$0	\$0	\$0	\$0	\$98,248	\$0	67	\$55,936
UW ART MUS	84	\$52,288	133	\$90,405	\$0	(\$25,000)	\$0	\$0	\$65,405	\$0	451	\$184,275
UNIV. FUND	129	\$13,063	308	\$31,333	\$0	\$0	\$0	\$0	\$31,333	\$0	285	\$29,651
OTHER GIFTS NOT YET BOOKED	62	\$245,158	222	\$2,517,140	\$0	(\$1,529,289)	\$371,830	\$1,350,000	\$2,709,681	\$0	332	\$18,240,458
TOTAL	4,949	\$2,333,834	10,157	\$8,500,233	\$288,326	(\$4,540,035)	\$1,486,980	\$6,757,875	\$12,493,379	\$200,000	10,204	\$21,485,846
Funds Not Deposited at Foundation				-\$797,379								
Foundation Cash In				\$7,702,853								

**Total Donors does reflect Column totals. Donors may give to more than one unit/division.

University of Wyoming, Foundation
 FY 2014 Monthly Giving Report through October
 Annual Gifts

Preliminary

FUND	FY 2014 GOALS	Current Month		FY 2014 to date		FY 2013 to same date		FY 2014 AF % of Goal
		DONORS	AMOUNT	DONORS	TOTAL	DONORS	TOTAL	
AGRIC	\$ 100,000	140	\$13,538	367	\$40,433	186	\$22,188	40.43%
AHC	\$ 47,000	85	\$7,735	129	\$23,985	59	\$11,355	51.03%
ALUMNI	\$ 10,000	533	\$36,034	1351	\$81,664	1265	\$63,921	816.64%
A & S	\$ 407,000	398	\$40,426	778	\$104,901	616	\$94,340	25.77%
ATHLETICS	\$ 2,800,000	219	\$27,351	1174	\$330,977	1512	\$372,422	11.82%
BUSINESS	\$ 150,000	119	\$12,020	287	\$41,185	208	\$22,085	27.46%
EDUCATION	\$ 71,000	139	\$9,955	298	\$23,031	182	\$15,972	32.44%
ENERGY	\$ 5,000	10	\$4,325	16	\$5,450	12	\$1,275	109.00%
ENGINEERING	\$ 300,000	162	\$21,575	400	\$67,683	288	\$50,558	22.56%
IENR	\$ 58,000	5	\$1,280	37	\$13,425	10	\$2,600	23.15%
HEALTH SCI	\$ 131,000	108	\$13,900	238	\$26,700	212	\$20,450	20.38%
LAW	\$ 73,000	37	\$8,430	95	\$18,450	103	\$24,020	25.27%
LIBRARY	\$ 31,000	24	\$2,293	78	\$10,583	75	\$15,765	34.14%
OUTREACH	\$ 900,000	2793	\$196,077	4347	\$340,008	4679	\$367,780	37.78%
STU AFFRS	\$ 35,000	49	\$4,050	105	\$15,225	61	\$3,336	43.50%
UW ART MUS	\$ 49,000	12	\$790	28	\$2,715	74	\$15,155	5.54%
UNIV. FUND	\$ 93,000	129	\$13,063	308	\$31,333	285	\$29,651	33.69%
OTHER GIFTS NOT YET BOOKED	\$ 40,000	49	\$5,298	119	\$17,281	121	\$30,571	43.20%
TOTAL	\$5,300,000	4,727	\$418,139	9,282	\$1,195,027	9,219	\$1,163,444	22.55%

**Total Dnrs do not reflect Column totals. Donors may give to more than one unit/division.