

**THE UNIVERSITY OF WYOMING  
BOARD OF TRUSTEES' REPORT**

**March 27-28, 2014**

The final report can be found on the University of Wyoming Board of Trustees website at  
<http://www.uwyo.edu/trustees/>

## **University of Wyoming Mission Statement (March 2009)**

The University of Wyoming aspires to be one of the nation's finest public land-grant research universities. We serve as a statewide resource for accessible and affordable higher education of the highest quality; rigorous scholarship; technology transfer; economic and community development; and responsible stewardship of our cultural, historical, and natural resources.

In the exercise of our primary mission to promote learning, we seek to provide academic and co-curricular opportunities that will:

- Expose students to the frontiers of scholarship and creative activity and the complexities of an interdependent world;
- Ensure individual interactions among students, faculty, and staff;
- Nurture an environment that values and manifests diversity, free expression, academic freedom, personal integrity, and mutual respect; and
- Promote opportunities for personal growth, physical health, athletic competition, and leadership development for all members of the University community.

As Wyoming's only university, we are committed to outreach and service that extend our human talent and technological capacity to serve the people in our communities, our state, the nation, and the world.

The primary vehicles for identifying the specific actions and resource allocations needed to accomplish this complex mission are the University's strategic plans, revised periodically.

**TRUSTEES OF THE UNIVERSITY OF WYOMING AGENDA**  
**March 27-28, 2014**

**WORK SESSIONS**

Information and Discussion of University Processes and Issues

- Approval of State Matching Funds Plan, Mai/Blalock ..... 1
- Legislative Summary & UW's plans in response, Boswell/Mai/Miller ..... 2
- Salary Distribution Policy, Mai/Miller ..... 13
- Tuition Policy and Fees and Fee Book, Mai/Miller..... 13

Budget and Budget Management 101, Trustee Orientation, Mai ..... 26

Overview of Academic Personnel and Policies, including Tenure & Promotion and  
Reappointment, and Trustee Orientation, Murdock/Jones ..... 37

Strategic Planning Process, McGinity/Murdock..... 38

Financial Services RFPs, Mai ..... 39

Discussion of May meeting topics – budget oversight; supplemental budget request planning,  
McGinity/Bostrom ..... 40

**BUSINESS MEETING**

**Roll Call**

**Approval of Board of Trustees Meeting Minutes**

January 16-18, 2014

**Approval of “Special” Board Meeting Minutes**

March 10, 2014

**Approval of Executive Session Meeting Minutes**

January 16-18, 2014

**Reports**

ASUW

Staff Senate

Faculty Senate

**Public Testimony**

[To be held from 10:00-10:30 a.m. on Friday, March 28, 2014]

**Committee of the Whole**

**REGULAR BUSINESS**

Board Committee Reports ..... 41

A. Academics and Research (Murdock)

Trustee Lauer, Committee Chair – [No Report; will not meet.]

B. Fiscal and Legal Affairs (Mai)

Trustee Davis, Committee Chair

## **Committee of the Whole (cont.)**

### **REGULAR BUSINESS**

- C. Student Affairs/Athletics/Administration/Information Technology (Axelson)  
Trustee Palmerlee, Committee Chair – [No report; will not meet.]
- D. Alumni Board – Lauer
- E. Foundation Board – Marsh/Bostrom
- F. Haub School Environment and Natural Resources Board –Davis
- G. Energy Resources Council (ERC) –Palmerlee
- H. Trustee Award of Merit Ad Hoc Committee – True (Time held should the committee be prepared to provide a report.)

### **CONSENT AGENDA**

- 1. Approval of Contracts and Grants, Gern ..... 42
- 2. Personnel, Murdock ..... 61
- 3. Approval of Easements, Mai..... 73
  - o Electric Easement to Powder River Energy, Crook Co., WY
  - o Access Easement to FAE Holdings at Spanish Walk Apartments
  - o Access Easement to City of Laramie for west Laramie water tank
- 4. Approval of Tuition Policy, Mai..... 82
- 5. Approval of Fees (Fee Book), Mai ..... 82
- 6. Approval of Salary Distribution Policy, Mai ..... 82
- 7. Approval of State Matching Funds, Blalock..... 83
- 8. Approval of Masters Degree in Architectural Engineering, Gasem ..... 84
- 9. Approval of State Matching Funds Plan, Mai/Blalock ..... 85

### **New Business**

### **Old Business**

**Date of Next Meeting** – May 8-9, 2014; Laramie, Wyoming

**Future Meeting:** Board of Trustees Retreat – July 16-18, 2014; Casper, Wyoming

### **Adjournment**

---

### **Information Only Items:**

- 1. Presidential Directive re: International Travel to Heightened Risk Areas, McGinity ..... 86
  - 2. Progress Report/Change Orders, Mai ..... 89
  - 3. Development Report, Blalock..... 95
-

**AGENDA ITEM TITLE:**

**Information and Discussions of University Processes and Issues:**

- **Approval of State Matching Funds Plan – Mai/Blalock**
- **Legislative Summary & UW's plans in response – Boswell/Mai/Miller**
- **Salary Distribution Policy – Mai/Miller**
- **Tuition Policy and Fees and Fee Book – Mai/Miller**

**CHECK THE APPROPRIATE BOX(ES):**

- ☒ Work Session  
☐ Education Session  
☐ Information Item  
☐ Other                      Specify:

**Approval of State Matching Funds Plan– Mai/Blalock**

**BACKGROUND AND POLICY CONTEXT OF ISSUE:**

**UNIVERSITY OF WYOMING BOARD OF TRUSTEES  
STATE MATCHING FUNDS PLAN – BUDGET SESSION 2014**

The State of Wyoming having recently appropriated the sum of Five Million Dollars (\$5,000,000) for the University of Wyoming through the endowment challenge program as provided in W.S. 21-16-901 through 21-16-904, and whereas the endowments that are eligible to be funded by these matching funds are subject to a plan that is to be approved by the UW Board of Trustees, the board hereby establishes the following plan to govern the allocation of said matching funds.

Gifts that are eligible for this particular pool of matching funds shall have an emphasis on disciplines that are directly related to Wyoming's economy. Qualifying matching gifts can be made in support of students (undergraduate or graduate), faculty or programmatic functions in focused disciplines which include, but are not limited to, the following: Agriculture, Business, Education, Engineering, Energy & Natural Resources, Health Sciences, the Sciences and STEM. The UW Foundation will create and maintain a list of potential matching gift opportunities that fall within these specified disciplines and will present prospective gift opportunities for the UW Board of Trustees to consider for State match approval until such time as these matching funds have been fully extinguished.

**Legislative Summary & UW's plans in response – Boswell/Mai/Miller**

BACKGROUND AND POLICY CONTEXT OF ISSUE:



Date: March 19, 2014

To: UW Board of Trustees

From: Richard C. McGinity, University President

Re: 2014 Post-Legislative Issues Requiring UW Action

Attached is a summary identifying the substantial number of tasks UW has facing in the coming months as a result of the actions of the 2014 Legislature.

This list has been created so that we can keep track and manage our efforts to ensure UW takes full advantage of the opportunities presented by these requirements. Substantial efforts are already underway, and we will keep the Board apprised on progress as the spring and summer progress.

### 2014 Post-Legislative Issues Requiring UW Action

SUBJECT	STATUTORY REFERENCE	DESCRIPTION	DEADLINES
<u>ACADEMIC PROGRAMS</u>			
1. Tier 1 Engineering Program	Budget Bill Block grant 067 Footnote 10	<ul style="list-style-type: none"> <li>- \$8 million separate line item in budget (that means it is not part of the block grant);</li> <li>- UW prohibited from reducing funding for CEAS or reducing CEAS proportional share of the block grant; - UW to include request for Tier 1 funding in the next biennial budget bill including UW's matching share</li> <li>- \$150,000 immediately effective for Program Coordinator;</li> <li>- Balance effective July 1, 2014 to be expended consistent with the Tier I plan</li> </ul>	Summer 2015, UW will necessarily consult with the Tier I Task force regarding the budget request for the next biennium
2. Tier 1 Engineering Facility	Budget Bill Section 327	<ul style="list-style-type: none"> <li>- Gov must consult with Task Force and cochair of Minerals Committee on design;</li> <li>- Gov to release Level II/III planning and design funds if satisfied the building will meet the objectives</li> <li>- Provision is immediately effective</li> </ul>	UW will need to request release of construction funds likely in 2015 session

3. High Bay facility	Budget Bill Section 067 Block grant Footnote 7 & 12 Section 331(a); See also item #4 under Foundation	<ul style="list-style-type: none"> <li>- \$3M in matching funds from redirection of AML funds</li> <li>- \$7.5M in matching funds in block grant</li> <li>- Governor must approve release –</li> <li>- Gov must consult with Task force before approving release of funds for construction</li> </ul>	
4. Science Tier 1 Initiative	Budget bill Section 317	<ul style="list-style-type: none"> <li>- Governor to appoint task force</li> <li>- Consultation with legislative leadership and Board of Trustees in such appointments by Governor</li> <li>- The task force will report on a variety of biological and physical science laboratory needs with a view to laying the groundwork for another initiative to promote excellence.</li> </ul>	<p>Task force report due November 1, 2014.</p> <p>Gov to include his recommendations in light of task force report in his budget recs on 12/1/14</p>
5. Implement Clinical lab outreach degree in Casper	Budget bill In block grant	Requested funding approved for implementation; implementation efforts will begin shortly	
6. Report on transfer of credits in consultation with community colleges and CC Commission	Budget bill 067 footnote 8	UW must consult with the Community Colleges and report to the committees; this is a very longstanding legislative concern	<p>Report due to JAC and JEC 11/1/14</p> <p>(JAC meets Nov 10-11 in Casper and Nov 24-25 in Cheyenne)</p>



7. WWAMI review and review panel	Budget bill Section 167 footnote 1	<ul style="list-style-type: none"> <li>- UW President to designate a physician review panel</li> <li>- UW conducts review and submits same to review panel;</li> <li>- Review and recommendations submitted by the panel to the Board of Trustees and the Labor Committee</li> <li>- Offers of assistance have come forth from the Wyoming Medical Association</li> </ul>	<p>Trustees must set a due date for the submission – but no later than 10/1/15;</p> <p>Trustees might consider setting date at May 2014 meeting</p>
8. Family practice residency budget review	Promised to JAC	<ul style="list-style-type: none"> <li>- Need to clarify the budget structure so that an appropriate biennial budget request can be prepared by summer 2015</li> <li>- Need to determine feasibility of federal assistance</li> </ul>	
9. Wyoming Public media appropriation and implementation	Block grant	Requested funding approved but only \$1 million; need to determine future efforts for equipment/facilities and interaction with WyoLink	
10. UW law school	Judiciary committee Interim topic	Judiciary is interested in hearing from a variety of constituencies regarding the Law School; a very valuable opportunity for communication	Judiciary meeting in Laramie Sept 11-12 (same as BOT)
<u>Research and Economic Development</u>			
1. Brucellosis research	Budget bill In block grant	Additional \$200K request approved	

2. Rare earth minerals	Budget bill Section 331	Continuation of rare earth minerals research funding	
3. Water research	Various legislators and committees	Concerns regarding UW's water research efforts funded through the Water Development Commission to support state agencies in accomplishing their mission	
4. Value added energy & industrial plan	Budget Bill Section 334	A very ambitious initiative involving a variety of state agencies, including UW	
<u>Student Affairs</u>			
1. Plan for residence halls	Budget Bill Section 067 Footnote 2	This is a once in a generation opportunity to discuss the long term future of on-campus housing with a strong emphasis on traditional aged freshmen; freshmen being required to live in campus housing is a strong predictor of academic success	Report due to JAC and JEC by 10/1/15
2. Enrollment incentive	Budget Bill Section 067 Footnote 6	\$1M in FY 16 if fall enrollment in 2015 is at least 600 greater than fall 2013; see #3	
3. Report on reducing tuition for students in surrounding states	Budget Bill 067 Footnote 1	Note – the language requires the BOT to report to the committees; #2 above and this report are essentially a request by the Legislature that UW determine what its enrollment goals and objectives are	10/1/14 report to JAC and JEC (JAC meets Nov 10-11 in Casper of 24-25 in Cheyenne)

4. Reduce fees for student camps to attract students	Budget Bill 067 Footnote 4	\$100K to reduce the costs of attendance at camps for high school students at UW; an opportunity to show more students UW	
5. Veterans' tuition	Senate File 61	Beginning with the summer of 2014, veterans meeting certain criteria will be granted resident status for tuition purposes at UW and the Community Colleges	
6. Wyoming conservation corps (WCC)	Travel committee interim topic	The WCC operated almost exclusively on revenues from contracts for services performed. Many of the projects were under the auspices of state agencies. The Joint Travel, Recreation, Wildlife and Cultural Resources Committee has an interim topic to develop sustainable funding for the WCC.	
<u>Information Technology</u>			
1. Matching funds to release IT appropriation	Budget Bill 067 Footnote 9	UW requested \$2.8M in one-time funding for IT equipment; the Legislature authorized \$1.5M to be released in \$150K increments as UW matched the appropriations with funds from any source, including the block grant	

<u>Administration</u>			
1. BSL-3 O&M Repair Transfer of work	Budget Bill 067 Block grant & Section 332 See also Budget Bill Capcon 006 Footnotes 2 & 3	<ul style="list-style-type: none"> <li>- \$1.3M for O&amp;M approved</li> <li>- Atty Gen and State A&amp;I have the lead regarding repairs</li> <li>- UW has a team in place to work with the AG and State A&amp;I</li> </ul>	Ag Committee interim topic <ul style="list-style-type: none"> <li>- Meeting in Laramie Sept 25 and 26 (no home game)</li> </ul>
2. O&M for the Outreach facilities	Budget Bill 067 Block grant	<ul style="list-style-type: none"> <li>- Requested funding for O&amp;M for UW at Casper, Sheridan and Riverton Outreach facilities approved</li> </ul>	
3. Plan for Major maintenance	Budget Bill Section 312	<ul style="list-style-type: none"> <li>- Full funding for major maintenance at 1.5% of replacement cost</li> </ul>	
4. Classroom renovations	Budget Bill Capcon Section 067	<ul style="list-style-type: none"> <li>- \$4M for the first of several phases of classroom renovations and remodeling across campus to provide modern educational platforms</li> </ul>	
5. Water wells & delivery system	Budget Bill Capcon Section 067	<ul style="list-style-type: none"> <li>- \$5M for drilling two wells for non-potable water and for the infrastructure to deliver the water</li> </ul>	

6. Poplar street facility proceeds – swap for STEM	Budget Bill Section 324	<ul style="list-style-type: none"> <li>- Poplar street facility in Casper will shortly be sold; a contract based on the winning bid will soon be executed;</li> <li>- The proceeds from the sale will be transferred to the State Treasurer to be held in reserve as a result of agreements related to the supplemental bond coverage program UW participates in</li> <li>- The transfer will free up Federal Mineral Royalties currently being held by the St Treas; those FMRs will be used to cover the unexpectedly high cost of utility work under Lewis Street associated with the Enzi STEM facility</li> </ul>	
<u>Athletics</u>			
1. CJC 1:2 match	Budget Bill 067 Footnote 5	\$1M in each year of the biennium is available to match Cowboy Joe Club donations on a \$1 match per \$2M donation basis	
2. Rodeo support and transfer to athletics	Budget Bill 067 Footnote 3	Part of the Legislature's comprehensive effort to promote rodeo at UW and the Community Colleges; Office of Travel and Tourism also has funding UW's Dept of Intercollegiate Athletics will work with the College of Ag and Natural Resources to develop a plan	Report due 11/1/14 Legislation not clear, but JAC is intended recipient of the report

3. AA appropriation	Budget Bill Capcon 067	\$5M to complete Phase II of the AA	
4. Corbett pool Planning funds for construction	Budget Bill Capcon 067	\$500K in planning funds \$2M set aside for construction UW needs to proceed quickly so that a request for construction can be submitted in the supplemental budget request	
<u>Foundation</u>			
1. Report on stabilization reserve account	Senate File 26 Section 2	UW will report to the Judiciary Committee regard ing a stabilization reserve account related to state matching funds for UW endowments	July 17-18 Newcastle (same dates as Board retreat)
2. Matching funds - literacy	Budget bill Section 339(c)	A generous donor has provided a gift that these funds will match to support the First Lady's literacy initiative	
3. Matching funds – petroleum engineering chair	Budget Bill 067 Block grant Footnote 11	Efforts are underway to secure a donor for these matching funds	
4. Matching funds – High bay	Budget Bill 067 Block grant Footnote 12 & Section 331 (a)	Efforts are underway to secure donors for these matching funds	

5. Matching funds – disciplines related to Wyoming's economy	Budget Bill 067 Block grant Footnote 13	These matching funds are available only to match gifts for disciplines related to Wyoming's economy under a policy approved by UW's Board of Trustees Efforts are underway to prepare a draft policy for the Board's consideration	
<u>Other</u>			
1. LSO Mgmt Audit of UW		The Management Audit Committee of the Legislature is conducting a management audit of UW in several respects This audit is focused primarily in UW policies and practices, not a fiscal audit When the audit is complete, UW will have an opportunity to respond to it and appear before the Management Audit Committee	
2. Special districts	Corporations Committee interim topic	Management Council advised Corporations Committee to contact Law School for assistance  The Law School has a faculty member who has been in communication with the Legislative Service Office to provide necessary support to the Committee.	

3. Tribes - education	Select Tribal Relations Committee to discuss education on the reservation	It is anticipated that UW would participate in any discussions the Select Committee has regarding education on the reservation; In addition, there is interest in developing a program where Native American students would be provided opportunities to attend medical school	
4. WYIN (Wyoming Investment in Nursing)	Joint Labor, Health and Social Service Committee	UW students benefit from the WYIN program  The Committee is determining whether to recommend reauthorizing the program.	



### **Salary Distribution Policy – Mai/Miller**

#### **BACKGROUND AND POLICY CONTEXT OF ISSUE:**

Vice President for Administration William Mai will provide information to the Board of Trustees at the March meeting.

### **Tuition Policy and Fees and Fee Book, Mai/Miller**

#### **Tuition Policy**

#### **BACKGROUND AND POLICY CONTEXT OF ISSUE:**

The Trustees of the University of Wyoming, a constitutional body, are responsible for the “management of the university” (Wyoming Constitution, Article 7, 17). UW Regulation 8-1 stipulates that “all student fees, charges, refunds and deposits shall be fixed by resolution of the Trustees and shall be published in the appropriate university publications.”

A tuition increase of 4 percent for FY 2015 is recommended for all *resident* and *non-resident* undergraduate and graduate students. The tuition costs per credit hour that result from these recommended increases are:

	\$ per credit hour	
	<b><u>FY 2014</u></b>	<b><u>FY 2015</u></b>
<b><u>General Tuition Program</u></b>		
<b>Undergraduate</b>		
Resident	\$108	\$112
Non-resident	\$432	\$449
<b>Graduate</b>		
Resident	\$210	\$218
Non-resident	\$629	\$654
<b><u>Outreach Non-resident Transition Plan</u></b>		
Undergraduate	\$152	\$222
Graduate	\$294	\$428
<b><u>Tuition Rates for Programs with Differential Rates</u></b>		
<b>Law</b>		
Resident	\$419	\$436
Non-resident	\$889	\$925

**Pharmacy**

Resident	\$387	\$402
Non-resident	\$816	\$849

**MBA**

Resident	\$540	\$562
Non-resident	\$822	\$855

**DNP**

Resident	\$304	\$316
Non-resident	\$643	\$669

Proceeds from the general tuition increase will be used to support UW's top non-salary academic program priorities, including A&S Structural Funding, Learning Management System, university libraries, labs/equipment/supplies and student recruitment and retention initiatives. These investments will directly enhance the quality of the educational experience for UW students.

The tuition proposal will generate new revenue of approximately \$2.0M in FY 2015. With the exception of the \$500,000 for compensation (which is a firm number), the tuition revenue generated is intended to be used for the following purposes:

	<b><u>FY 2014</u></b>
Merit-Based Compensation	\$500K
A&S Structural Funding	\$350K
Learning Management System	\$570K
Libraries	\$250K
Labs/equipment/supplies	\$ 80K
Student recruitment and retention	\$250K
<b>Total New Revenue</b>	<b>\$2,000K</b>

**PRIOR RELATED BOARD DISCUSSIONS/ACTIONS:**

The Board discussed tuition policy at the January 2014 meeting and again at the March 10, 2014 Special Board Meeting.

**WHY THIS ITEM IS BEFORE THE BOARD:**

The Board of Trustees approves the tuition rates for the University of Wyoming.

**ARGUMENTS IN SUPPORT:**

- The proposed investment of tuition dollars in A&S Structural funding, Learning Management System, libraries, labs/equipment/supplies and student recruitment and retention will enhance the quality of the education UW students receive.
- Generous support from general fund appropriations provided by taxpayers of the State of Wyoming substantially underwrites the cost of education for Wyoming resident students.

- Tuition and mandatory fees for resident undergraduates at the UW are the lowest in the country among all public doctoral universities. If the proposed tuition increase is adopted, UW will continue to have the lowest tuition and mandatory fee rates for resident undergraduates nationwide among public doctoral universities.
- The Outreach School's four-year transition plan (that was approved in January 2012) will bring non-resident tuition rates in line with UW on-campus non-resident rates by FY 2017.
- Tuition differentials for the professional programs leading to the J.D., M.B.A., and Pharm.D. degrees will increase by the same rates as the general undergraduate and graduate rates.
- The differential rate adjustments will provide additional resources directly to the four professional degree programs, enhancing the quality of those programs for the students who pay the tuition differentials.

**ARGUMENTS AGAINST:**

None.

**ACTION REQUIRED AT THIS BOARD MEETING:**

It is recommended that the Board of Trustees of the University of Wyoming approve the tuition rates for resident and non-resident students (including the non-resident tuition rate transition plan for the Outreach School) and the differential tuition rates for professional programs as presented in this item for Fiscal Year 2015.

**PRESIDENT'S RECOMMENDATION:**

The President recommends approval of the tuition program as presented in this item.

**Fees and Fee Book**

**BACKGROUND AND POLICY CONTEXT OF ISSUE:**

The Trustees of the University of Wyoming, a constitutional body, are responsible for the "management of the university" (Wyoming Constitution, Article 7, 17). UW Regulation 8-1 stipulates that "all student fees, charges, refunds and deposits shall be fixed by resolution of the Trustees and shall be published in the appropriate university publications."

The Board adopted a two-year program of tuition increases at the March 2012 Board of Trustees meeting and a two year program of fees at the March 2012 meeting. Mid-biennium changes to the Fee Book were approved at the March 2013 meeting.

This item (together with the associated University of Wyoming Fee Book publication) presents recommended increases for all Mandatory and Non-Mandatory Fees for the University of Wyoming.

### **Mandatory Fees**

The mandatory fees assessed on all students on the Laramie campus support a variety of self-sustaining programs. The proposed increases for FY 2015 will be used to fund operating cost increases (e.g., compensation increases, employer contribution for health insurance premiums, retirement, utility cost increases, etc.) and a limited number of program enhancements.

- The fee request from the Wyoming Union will cover anticipated compensation increases, increases in health insurance and retirement contributions. The \$3 SLCE (Service, Leadership and Community Engagement) fee will also be moved from the Student Services Fee to the Wyoming Union Fee. The Union Board and the Student Fee Committee have recommended approval of this request.
- The mandatory Student Services Fee supports a number of programs and operations, including ASUW, Student Media, Recycling, Wellness, AWARE, and music/theatre programs. The SLCE Fee is being moved to the Wyoming Union Fee. Base increases in the Student Services Fee will be used to fund compensation increases, retirement contribution increases, health insurance increases, maintenance and repair expenses, and supplies. Additional funding has been requested by Alcohol Wellness Alternatives, Research & Education (AWARE) to cover the Student Health 101 online health education magazine, since the current grant supporting it is ending May 2014. The University Counseling Center is requesting additional funding to support programming for a centralized wellness program including a health educator and athletic trainer. Student Media is requesting an increase to cover anticipated compensation increase, health insurance cost increases and retirement increases. ASUW is requesting a small increase in their fee to cover anticipated compensation increases, health insurance costs and retirement increases as well as a small programmatic increase for ASTEC to pay for the increased demands on the program. The Recycling program and Music/Theatre did not request an increase in FY 2015.
- The increased fee for Student Health Service will cover compensation increases, increases in health insurance premiums and retirement contribution increases.
- The increase of \$25 per year for Intercollegiate Athletics will provide additional support for a broad array of athletics needs including, but not limited to, student game promotions, medical expenses, student athlete academic counseling, recruiting and team travel. UW student fees supporting Intercollegiate Athletics are among the lowest in the conference and the western region of the United States at universities with Division I athletics programs.
- The Campus Recreation Programs fee request will cover compensation increases, anticipated health insurance increases and retirement contribution increases as well as a full-time fitness coordinator.
- The increase in the Transit Fee reflects increased costs to add shuttle service to the Gateway Center in addition to the anticipated compensation increases, health insurance cost increase, and retirement contribution as well as replacement of buses.

The table below summarizes the proposed changes in mandatory fees for FY 2015 along with those assessed in the current year (FY 2014).

**Proposed Mandatory Fees FY 2015**

<b>Mandatory Student Fees<sup>1</sup></b>	<b>FY 2014</b>	<b>FY 2015</b>
Wyoming Union	\$ 276.74	\$ 292.62
Student Services	\$ 170.90	\$ 186.12
Student Health Service	\$ 210.46	\$ 214.06
Intercollegiate Athletics	\$ 205.00	\$ 230.00
Campus Recreation Programs	\$ 220.00	\$ 225.00
Transit Fee	\$ 81.28	\$ 107.92
<b>Total Mandatory Student Fees</b>	<b>\$1,164.38</b>	<b>\$1,255.72</b>
<b>Total Annual \$ Increase</b>		<b>\$ 91.34</b>

<sup>1</sup>Fees are shown on an annual basis

All mandatory fee requests were reviewed by the ASUW Student Fee Committee and submitted to ASUW for ratification. ASUW passed a first reading of Senate Resolution #2421 (see Exhibit 1) on March 11, 2014, supporting the proposed fee increases. Final approval is scheduled to occur on March 25, 2014.

**Non-Mandatory Fees**

Non-Mandatory Fees are charged to cover the cost of providing services to individuals who choose (but are **not** required) to purchase these services from the University.

**Residence Life & Dining Services Rates**

As an auxiliary department, Residence Life & Dining Services (RLDS) is financially self-supporting—the department must generate revenues to support all expenses. The three major revenue components of the RLDS budget are room, board, and rent. To cover projected expenses in FY 2015, room and board fees in the residence halls are proposed to increase by 3.33% and 3.15% respectively, and apartment rent by 2.50%.

The major cost drivers within the RLDS budget are increases in health insurance costs, utilities, and food costs. In FY 2015, in order to fund the anticipated increase in compensation, increase in health insurance premiums, retirement increases, anticipated utility rate increases of 7.0%, and food cost increases of 1.0%, it is necessary to increase room rates by 3.33% and board rates by approximately 3.15%.

Rental rates for the student apartments must also support the projected costs for health insurance and utility increases. The workforce assigned to the apartments is much smaller in comparison to the residence hall complex, and as a result, the rental rates do not need to increase as much as the residence halls. The proposed rate increases for University apartments reflects an overall increase of 2.50% for FY 2015.

The proposed increase would establish the following residence hall room rates for FY 2015:

<b>Residence Hall Room Charges Academic Year, excludes semester break</b>	<b>FY 2014</b>	<b>FY 2015</b>
Room occupancy Double, B	\$4,027	<b>\$4,160</b>
Room occupancy Single, A	\$5,701	<b>\$5,889</b>
Single, B	\$5,963	<b>\$6,160</b>

The proposed increases would establish the following residence hall board rates for FY 2013 and FY 2014:

<b>Board Charges, Academic Year Fall and spring semesters, excluding Thanksgiving, Christmas, spring and Easter breaks</b>	<b>FY 2014</b>	<b>FY 2015</b>
Unlimited access plan	\$5,424	<b>\$5,595</b>
Any 15 access plan	\$4,648	<b>\$4,794</b>
Any 12 access plan	\$4,244	<b>\$4,378</b>
Any 9 access plan	\$3,287	<b>\$3,390</b>
Any 7 access plan	\$2,596	<b>\$2,677</b>
Dining Dollars (per semester)		
Added Dining Dollars	\$100	<b>\$100</b>
Best Dining Dollars	\$200	<b>\$200</b>
BLOCK PLANS (Per Unit)		
25 Lunches	\$268.88	<b>\$277.35</b>
60 Lunches	\$626.36	<b>\$646.09</b>
25 Any Meal	\$286.23	<b>\$295.25</b>
60 Any Meal	\$676.56	<b>\$697.87</b>

Apartment rental rates for FY 2015 are proposed as follows:

<b>Apartment Rental Rates, Student, per month</b>	<b>FY 2014</b>	<b>FY 2015</b>
Landmark Village	\$764	<b>\$787</b>
Landmark ADA	NA	<b>\$720</b>
River Village		
Two bedroom	\$912	<b>\$928</b>
Three bedroom	\$1,027	<b>\$1,037</b>
Spanish Walk, one bedroom	\$684	<b>\$705</b>

For the Bison Run Village apartments, the FY2015 rates will be:

<b>Bison Run Village, per month</b>	<b>FY 2014</b>	<b>FY 2015</b>
Four bedroom/two bathroom – ADA one level	<b>399</b>	<b>411</b>
Four bedroom/two and half bathroom	<b>420</b>	<b>433</b>
Four Bedroom/three bathroom (shared bathroom)	<b>399</b>	<b>411</b>
Four Bedroom/three bathroom (private bathroom)	<b>430</b>	<b>443</b>
Three Bedroom/three bathroom	<b>435</b>	<b>448</b>

#### **Other Non-Mandatory Fees**

All other non-mandatory fee changes are outlined in the Fee Book publication.

#### **PRIOR RELATED BOARD DISCUSSIONS/ACTIONS:**

The Board was briefed at the January 2014 Board meeting and at the Special Board of Trustee meeting in March 2014.

#### **WHY THIS ITEM IS BEFORE THE BOARD:**

The Board of Trustees authorizes all University fees and charges.

#### **ARGUMENTS IN SUPPORT:**

The proposed increases support necessary cost increases (e.g., utility increases and health insurance cost increases that are consistent with those of employees funded through the Section I Budget) and program and capital improvements outlined earlier. ASUW has supported the proposed increases.

#### **ARGUMENTS AGAINST:**

None.

#### **ACTION REQUIRED AT THIS BOARD MEETING:**

Approval of the Mandatory and Non-Mandatory Fees for FY 2015 as presented in this item and the Fee Book.

#### **PRESIDENT'S RECOMMENDATION:**

The President recommends that the Trustees of the University of Wyoming approve the Mandatory and Non-Mandatory Fees for FY 2015 as presented in this item and the Fee Book.

**Exhibit 1**  
**SENATE RESOLUTION #2421**

**TITLE:** ASUW Support for University of Wyoming Tuition Increase

**DATE:** March 6, 2014

**AUTHOR:** President Kahler; Chief of Staff Haakinson; Director of Finance Iberlin

**SPONSORS:** Senators Blazovich, Haukaas, Powell, West

1. WHEREAS, the Associated Students of the University of Wyoming (ASUW) recognizes the
2. responsibility to recommend tuition increases that benefit a large population of students; and,
3. WHEREAS, the ASUW Student Government has the responsibility to accurately represent
4. the sentiment of the entire student body; and
5. WHEREAS, the ASUW Student Government formed a Tuition Task Force team in the Fall
6. of 2013 to research feasible tuition increases for UW students; and,
7. WHEREAS, faculty at UW have been leaving their positions in search of higher paying
8. positions at universities elsewhere at an increasing rate; and,
9. WHEREAS, the data collected data (contained in Addendum A) from the Tuition Task Force
10. team to aid in the evaluation of tuition increases was recommended to the Board of Trustees.
11. THEREFORE, be it resolved the by Student Senate of the Associated Students of the
12. University of Wyoming (ASUW) that the ASUW recommend and support a 4% increase in
13. tuition for the Fiscal Year 2015 and Fiscal Year 2016; and,
14. THEREFORE, be it further resolved that the ASUW recommend to the Board of Trustees
15. that tuition rates be evaluated and see if the tuition increases should be continued for the next
16. two years after the initial two years; and,



17. THEREFORE, be it further resolved that the revenue that is directly generated from the

18. tuition increases be applied to faculty salaries.

**Referred to:** Student Outreach and Policy Committee

**Date of Passage:** \_\_\_\_\_ **Signed:**

\_\_\_\_\_

**(ASUW Chairperson)**

**“Being enacted on \_\_\_\_\_, I do hereby sign my name hereto and**

**approve this Senate action.” \_\_\_\_\_**

**ASUW President**

## Addendum A

# UNIVERSITY OF WYOMING

ASUW Student Government  
Dept. 3625 • Wyoming Union 020  
1000 E. University Ave., Laramie, WY 82071-2000  
(307) 766-5204

March 3<sup>rd</sup>, 2014

To: Board of Trustees, University of Wyoming  
Dick McGinity, President of the University of Wyoming  
Bill Mai, Vice President for Administration  
Sara Axelson, Vice President of Student Affairs

From: Brett Kahler, ASUW President  
Chris Haakinson, ASUW Chief of Staff  
Tuition Task Force Committee

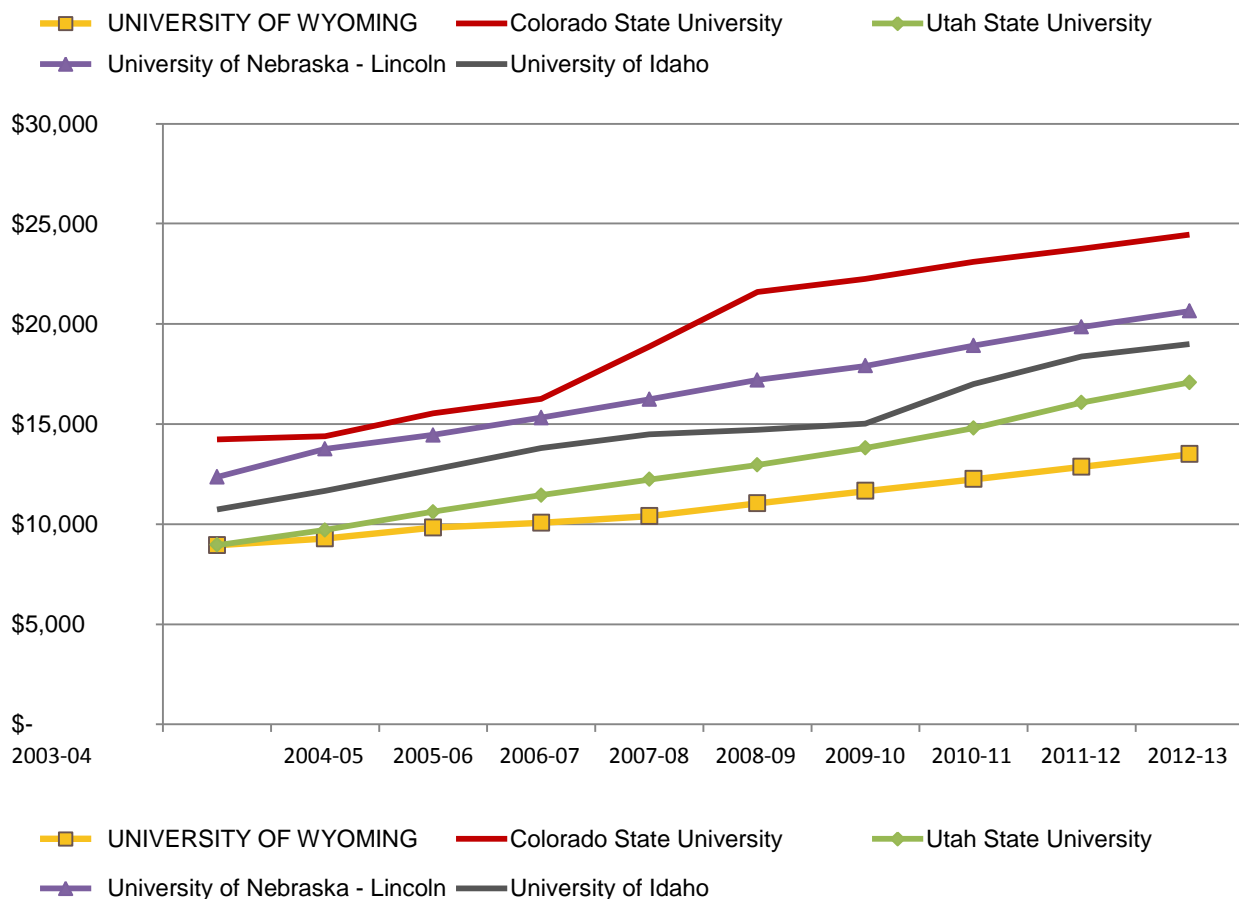
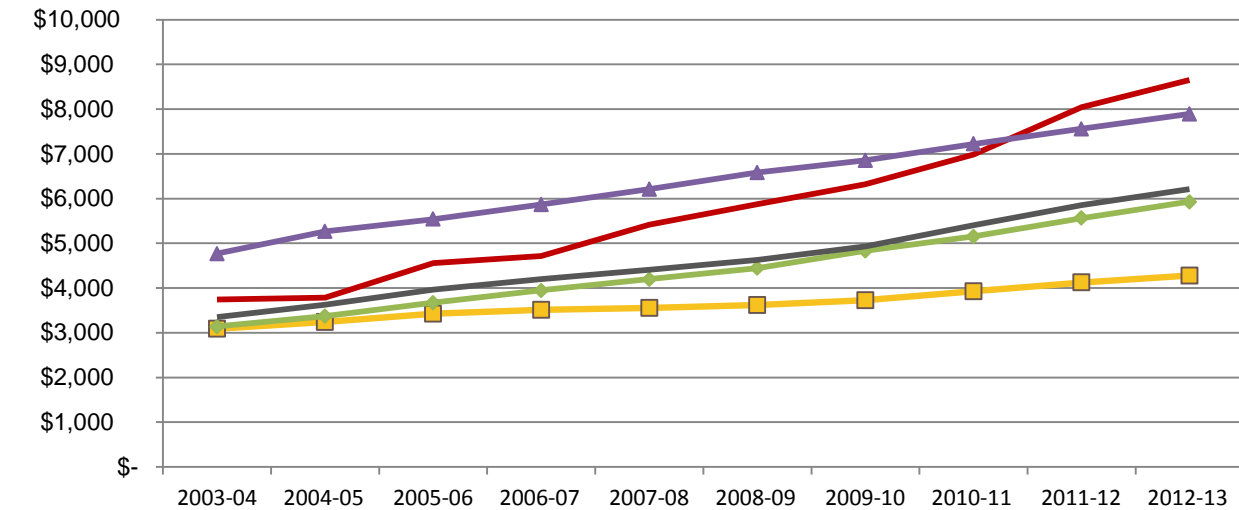
RE: **University of Wyoming Tuition**

Through recommendations made over the summer of 2013, a tuition task force committee was formed on behalf of ASUW to research and formulate whether a tuition increase would be beneficial to the campus of the University of Wyoming. The Tuition Task Force Committee consisted of five student volunteers: Kara Nazminia, Jim Meyer, Douglas Jordan, Heather Gibbs, and Morteza Akbarabadi. These student volunteers spent the majority of the first semester meeting with staff, faculty members, and different organizations to determine if a tuition increase would be beneficial. Another objective of the committee was to determine if there was an increase needed, how much. It was determined by the committee that tuition should be increased for the next two Fiscal Years and that the revenue generated should be applied to faculty salaries.

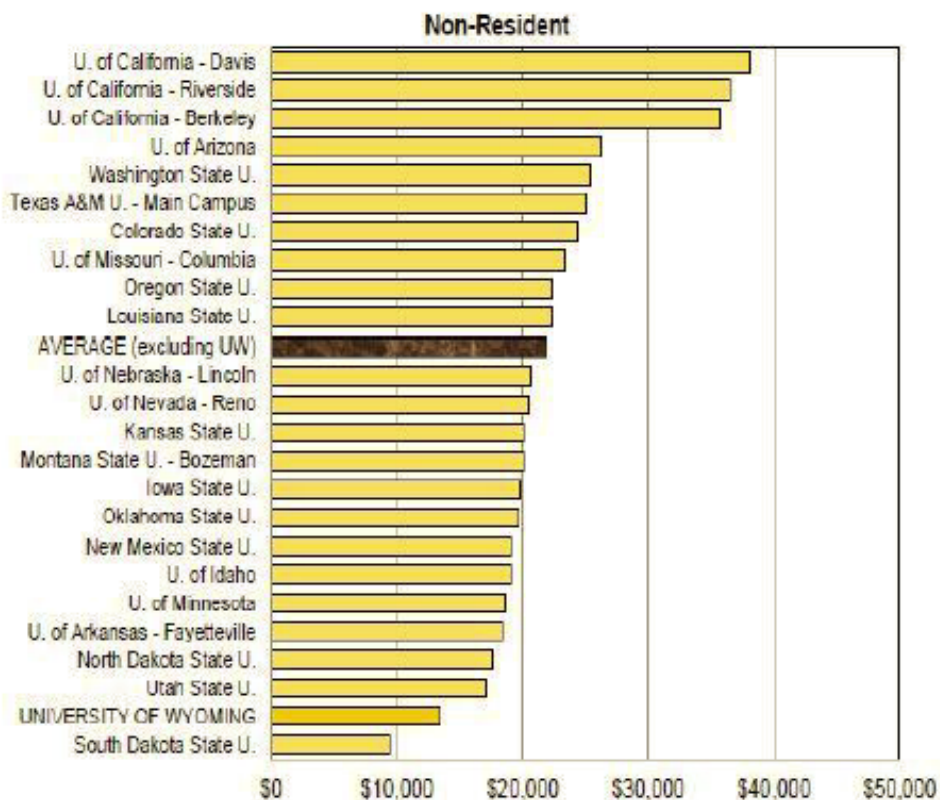
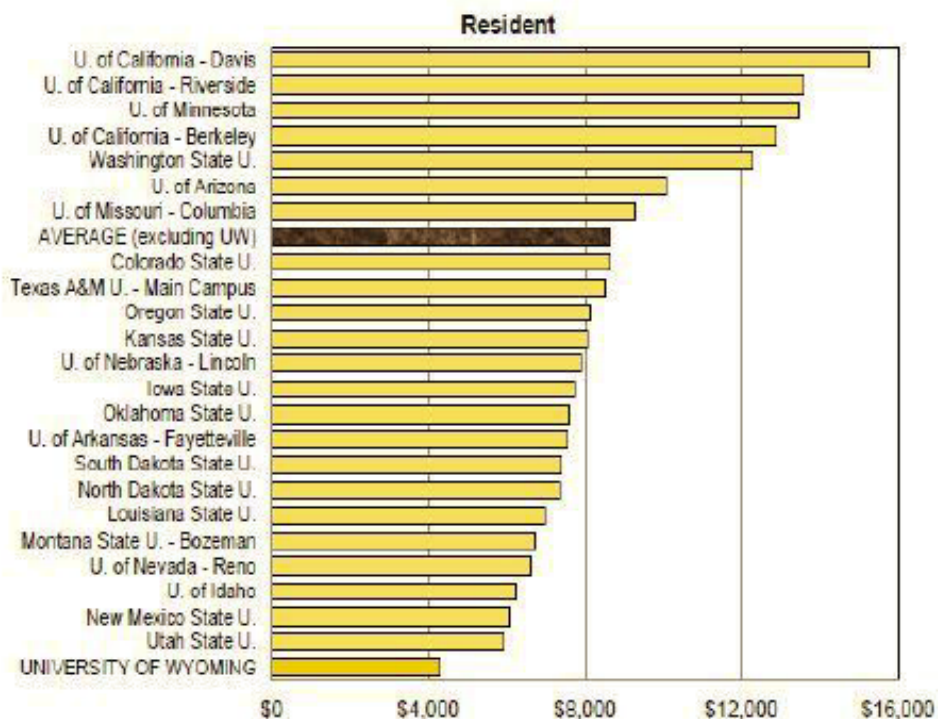
**Admissions** – From an admissions standpoint, Director of Admissions, Shelley Dodd stated that raising tuition would not decrease admissions numbers. Because the University of Wyoming has state-of-the-art facilities and top notch faculty, the Admissions Office feels that students will not be detracted from the University of Wyoming just because of tuition increases. Not to mention, the University of Wyoming continues to build facilities on campus to elevate admission numbers and retain the level of education.

**Comparison of Other Universities** – Five land-grant institutions across the region, including the University of Wyoming, were compared to each other regarding residential and nonresidential tuition as of 2013. Looking at the residential tuition graph, the University has remained the cheapest compared to its competitors regarding tuition costs. The same case can be stated for nonresidential tuition. Relatively speaking, beginning in the academic year 2003 –2004, most of the universities had started at or around the same tuition base. Over time, the other universities exponentially

increased tuition, while the University of Wyoming remained the same, only increasing tuition marginally over a decade. Shown below are graphs comparing the University of Wyoming base tuition to other land-grant universities:



**Undergraduate Average Annual Tuition and Fees  
UW Selected Western Land-grant Comparators 2012-13**



**Comparison of Other Universities Continued** – As seen above, the University of Wyoming is the least expensive when tuition is compared, yet the University maintains high quality facilities. This leaves the opportunity to increase tuition and still be in the “AVERAGE”.

**Tuition** – The Tuition Task Force Committee met with Interim Vice President of Fiscal Administration, Janet Lowe in late September and discussed with her the effects of raising tuition from a revenue aspect. As researched and gathered, a 1% increase in tuition across campus would generate approximately \$495,000. A 1% increase to salaries, on the other hand, would cost the university approximately \$1,750,000. Noticeably, in order to generate enough revenue to cover salary increases, tuition must be increased by 4%.

Based on multiple committee interactions, it was at the discretion of the Tuition Task Force Committee to increase University of Wyoming tuition 4% for Fiscal Year 15' and another 4% for Fiscal Year 16'. At the end of the second year of tuition increases, it was recommended that the process be evaluated and see if the tuition increases should be continued for the next two years after the initial two years. It was also stipulated that the revenue that is directly generated from the tuition increases be applied to professor salaries.

The Tuition Task Force Committee members believe that the increases in tuition and salaries will generate results that will retain faculty of University of Wyoming, yet the University of Wyoming will remain a competitor in terms of tuition cost.

It was also discussed, that extra incentives should be in place when attracting and retaining faculty for the University of Wyoming. Morteza Akbarabadi discussed with new faculty members of different universities, particularly in the Department of Engineering, one of the main incentives for them was to provide a comparable starting fund for the new faculty members to start their research and also having an appropriate facility to start their activities. Another important point that they mentioned was the tendency of the university to help the new faculty members get accommodated in the town and also getting help from the recommended agents for their settlements. Even though having a comparable salary was one of the main parameters for them to continue their job in the current department, having access to ever improving laboratories to carry out research would help them to decide at their current position.

Overall, increasing tuition marginally over the next few years will help retain and promote faculty at the University of Wyoming, but other efforts must be made to retain top-of-the-line faculty at the University of Wyoming.

**Conclusion** – Overall, the Tuition Task Force Committee spent a great deal of time researching and meeting with individuals to gather concrete evidence to provide a recommendation of whether or not tuition should increase, and by how much. This proposal is a recommendation and we believe that this information will aid the Board of Trustees in making a decision regarding tuition.

**AGENDA ITEM TITLE: Budget and Budget Management 101, Trustee Orientation, Mai**

**CHECK THE APPROPRIATE BOX(ES):**

- ☒ Work Session  
☐ Education Session  
☐ Information Item  
☐ Other                      Specify:

**BACKGROUND AND POLICY CONTEXT OF ISSUE:**

**UNIVERSITY OF WYOMING BUDGET OVERVIEW  
November 2013**

This document provides a brief overview of UW's budgets, originally developed for members of the Board of Trustees. The overview is organized as follows:

**1. REVENUE (SOURCES OF FUNDS):**

- General operating budget: Section I
- Self-sustaining budgets: Section II
- Special appropriations and other state agencies
- Capital construction
- Major maintenance

**2. EXPENDITURES (USES OF FUNDS):**

- Expenditure classifications
- Functions supported by expenditures

Hard copies of the complete UW operating budget are available at the Coe Library circulation desk. Three pie charts at the end of this document reflect the Section I budget revenue by funding source, expenditures by classification, and expenditures by function.

## 1. REVENUE (SOURCES OF FUNDING)

REVENUE CATEGORY	DESCRIPTION
SECTION I	<p>UW's general operating budget, supported by:</p> <ul style="list-style-type: none"> <li>• Legislative appropriations from the state's general fund <ul style="list-style-type: none"> <li>○ Agency/Department 067 – University of Wyoming <ul style="list-style-type: none"> <li>▪ Includes the School of Energy Resources</li> </ul> </li> <li>○ Agency/Department 167 – UW Medical Education</li> </ul> </li> <li>• UW income fund (mostly tuition) and Athletics income fund</li> <li>• Federal formula funds for the College of Agriculture and Natural Resources</li> <li>• Certain other revenues (land income, sales and services, federal mineral royalties, and clinic income)</li> <li>• Unrestricted income from the UW Foundation</li> </ul> <p>It is common to refer to the legislature-funded portion of the Agency 067 Section I budget as the “block grant”, since UW has the ability to move budget authority around within this appropriation without seeking line-by-line approval. The UW Medical Education budget (Agency 167) is not a block grant and has a specified number of employees.</p>
SECTION II	<p>Consisting mainly of self-sustaining budgets, including:</p> <ul style="list-style-type: none"> <li>• Revenue from auxiliary operations (such as housing, residence halls, dining services, student health service, student union, transportation, parking, and the University Store)</li> <li>• Gifts and contributions</li> <li>• Sponsored funding for research grants and contracts</li> <li>• Student fees</li> <li>• Federal mineral royalties</li> <li>• Intercollegiate Athletics</li> </ul>
SPECIAL APPROPRIATIONS AND OTHER STATE AGENCIES	<p>Operating budgets for specific activities authorized by the legislature in addition to the Section I and Section II budgets. Included in this category is the UW-administered portion of the Western Interstate Commission for Higher Education (Agency 069), and the Enhanced Oil Recovery Commission (Agency 070). UW may not transfer funds among these accounts, or between these accounts and the Section I or II budget.</p>
CAPITAL CONSTRUCTION	<p>Budgets for direct construction, architectural and engineering fees, equipment and furnishings, contingencies and associated costs. Funds for financing such projects may come from:</p> <ul style="list-style-type: none"> <li>• State general funds</li> <li>• Bonds issued against predictable sources of revenue, such as student fees and federal mineral royalties</li> <li>• Gifts and state matching funds</li> <li>• A combination of these sources</li> </ul>

MAJOR MAINTENANCE	Funds allocated by the Wyoming Legislature each biennium to support the maintenance and repair of major building systems (windows, roofs, HVAC, electrical wiring, data networks etc.). State statutes require these funds to be spent to maintain the current uses of facilities. The allocations follow a numerical formula established by the state in 2004 and are subject to the availability of funds. The director of physical plant determines project priority levels based on discussions with vice presidents, deans, and directors and maintains a schedule of projects and their priority levels, costs, and status. Major maintenance funds are not part of UW's Section I block grant.
-------------------	---

#### **SECTION I: SPECIFIC FUNDS, FUNDING SOURCE, AND CONSTRAINTS ON USE**

FUND	DESCRIPTION
GENERAL FUND	Legislative appropriation for the operation of the university.
UW INCOME FUND	Revenue deposited to this fund comes from three major sources: (1) tuition (by far the largest source); (2) student fees (special course fees, computer fees, and certain miscellaneous fees); and (3) income from Intercollegiate Athletic events. These funds are unrestricted except that athletic income is utilized only for Intercollegiate Athletics.
SALES AND SERVICES FUND	The primary revenue sources for this fund are indirect cost recovery, central services cost allocation, and interest income from the investment of funds held by the university. Other sources include procurement card patronage rebates, library fines, utility sales to fraternities and sororities, and sale of livestock and agricultural products produced as a result of instructional activities. This fund is unrestricted and may be used for any university purpose.
FEDERAL MINERAL ROYALTIES FUND	The source of income for this fund is mineral royalties from production on federal lands in Wyoming. These restricted revenues are used in Section I for maintenance and operation of UW's physical plant. A portion of this fund is used in Section II for payment of principal and interest on bonded debt, and for constructing and equipping new buildings, repair of existing buildings and purchase of improved or unimproved real estate.
FEDERAL FUNDS - AGRICULTURAL RESEARCH	These funds are provided by congressional appropriation under the McIntire-Stennis and Hatch Acts. They are restricted to uses supporting agricultural research.
FEDERAL FUNDS - AGRICULTURAL EXTENSION	These funds are provided by congressional appropriation under the Smith-Lever Act, and are restricted to use in agricultural extension programs.
AGRICULTURAL COLLEGE LAND INCOME FUND	This fund was created by the Federal Morrill Act which provided for a land grant of 90,000 acres to the Territory of Wyoming. A permanent fund was created in conjunction with the act to receive all proceeds from the sale of such lands. The fund derives its income from interest on the permanent fund and from rental of lands. These revenues are restricted to use for teaching of agricultural and mechanical arts, including military tactics.



UNIVERSITY LAND INCOME FUND	The fund was created by Federal Land Grant of 72 sections, and proceeds from the sale of such lands are placed in a permanent fund. The fund derives its revenue from interest on the permanent fund and from rental of lands. These funds are unrestricted and may be used for any university purpose.
UW FOUNDATION INCOME FUND	These funds are provided by the University of Wyoming Foundation from unrestricted income earned through management fee assessments and from Foundation investments.

## SECTION II: SPECIFIC FUNDS, FUNDING SOURCES, AND CONSTRAINTS ON USE

FUND	DESCRIPTION
AUXILIARY ENTERPRISES	Revenue from self-sustaining enterprises which exist to furnish goods or services to students, faculty, staff, other institutional departments, or incidentally to the general public, and charge a fee directly related to, although not necessarily equal to, the cost of the goods or services. Auxiliary enterprises include housing, residence halls, dining services, student health services, student union, transportation, parking, and the University Store.
GIFTS AND CONTRIBUTIONS	Non-federal support and donations from corporations, foundations, and private contributors are included in this category
SPONSORED FUNDING	Revenue primarily from federal agencies but also includes state and corporate contracts and grants, as well as foundation funding supporting sponsored research and specific educational and service programs.
ASSOCIATED STUDENTS OF UW	Revenue generated by student fees and income received as gifts to support the student loan program.
FEDERAL MINERAL ROYALTIES	The source of income for this fund is mineral royalties from production on federal lands in Wyoming. These restricted revenues are used in Section II for payment of principal and interest on bonded debt, and for other debt service charges such as required payments to the capital fund for improvements, operations and maintenance of debt-financed facilities. FMRs are also used in Section II for constructing and equipping new buildings, repair of existing buildings and purchase of improved or unimproved real estate.
INTERCOLLEGIATE ATHLETICS	Revenues generated through gifts, grants and contracts, and auxiliary services used to support Athletic activities, as well as revenue from sporting events.

## 2. SUMMARY OF EXPENDITURES

The National Association of College and University Business Officers classifies expenditures in two ways: (a) *by expenditure classification* (that is, the types of goods or services purchased) and (b) *by function* (that is, the elements of the institution's mission supported by the expenditures).

### a. EXPENDITURE CLASSIFICATIONS DEFINED BY NACUBO

EXPENDITURE CLASSIFICATIONS	DESCRIPTION
PERSONAL SERVICES	All salary and wage compensation for university employees and students and employee benefit programs in which the university participates.
SUPPORT SERVICES	Expenditures for services required by the university in the discharge of its functions or to fulfill legal obligations of the university. Types of expenditures include, but are not limited to, commodities purchased for consumption (such as office supplies, printing, stationery, equipment and small tools), continuing costs for rental of real estate or equipment, irrigation assessments, insurance premiums, maintenance service contracts, travel expenses, and contractual services.
GRANTS AND AID PAYMENTS	This category includes academic and athletic scholarships paid to student to cover tuition, room and board, books, and other educational expenses. It also includes payments to or on behalf of students who are participating in UW's various medical education loan repayment programs.
NON-OPERATING EXPENDITURES	This category includes, but is not limited to, interest expense and tuition and fee refunds.

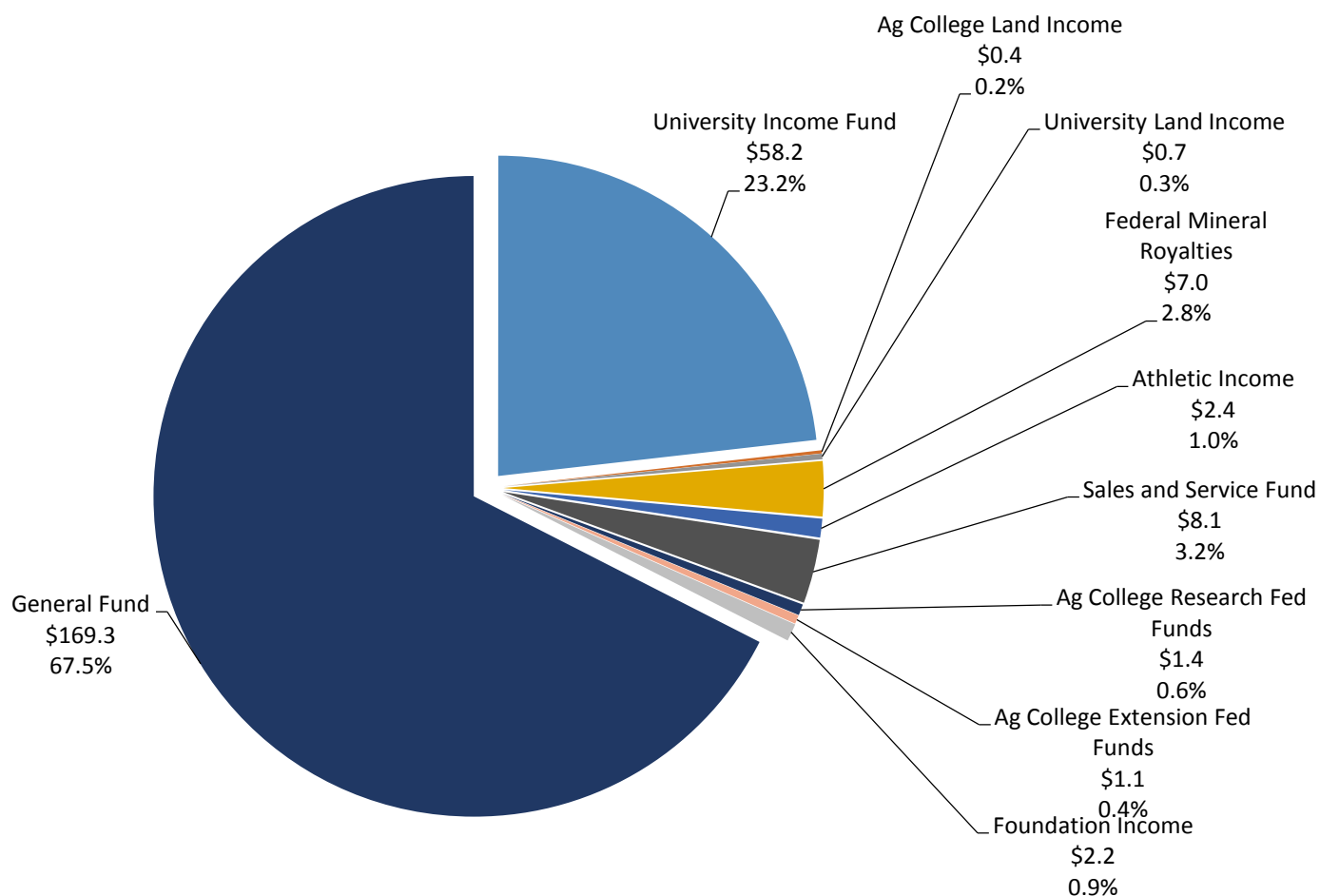
**b. NACUBO-DEFINED FUNCTIONS SUPPORTED BY EXPENDITURES**

Expenditures to support the functions listed below may be made in any of the NACUBO-defined expenditure classifications listed above.

<b>FUNCTION</b>	<b>DESCRIPTION</b>
<b>INSTRUCTION</b>	Expenditures for all activities that are part of the university's instruction program. Expenses for credit and noncredit courses; academic, vocational, and technical instruction; remedial and tutorial instruction; and regular, special and extension sessions are included in this category.
<b>RESEARCH</b>	This category includes all expenditures for activities specifically organized to produce research outcomes, whether commissioned by an agency external to the institution or separately budgeted by an organizational unit within the institution. Subject to these conditions, it includes expenditures for individual and/or project research as well as those of institutes and research centers.
<b>PUBLIC SERVICE</b>	Funds are expended for activities established primarily to provide non-instructional services beneficial to individuals and groups external to the institution. These activities include community service programs (excluding instructional activities) and cooperative extension services. Included in this program are conferences, institutes, general advisory services, reference bureaus, radio and television, consulting, and similar non-instructional services to particular sectors of the community.
<b>ACADEMIC SUPPORT</b>	Funds are expended primarily to provide support services for the institution's primary missions: instruction, research, and public service. It includes (1) operations for the retention, preservation, and display of educational materials, for example, libraries, museums, and galleries; (2) the provision of services that directly assist the academic functions of the institution; (3) audiovisual services and technology services, such as computing support; (4) academic administration (including academic deans but not department chairs) and personnel to provide administrative support and management direction to the three primary missions; and (5) separately budgeted support for course and curriculum development.
<b>STUDENT SERVICES</b>	Funds expended for the offices of admissions and the registrar and those activities whose primary purpose is to contribute to the student's emotional and physical well-being and to his or her intellectual, cultural, and social development outside the context of the formal instruction program. It includes expenditures for student activities, cultural events, the student newspaper, intramural athletics, student organizations, intercollegiate athletics (if the program is not operated as an auxiliary enterprise), counseling and career guidance (excluding informal academic counseling by the faculty), student aid administration, and student health service (if not operated as an essentially self-supporting activity).

INSTITUTIONAL SUPPORT	Expenditures for: (1) central executive-level activities concerned with management and long-range planning of the entire institution, such as the governing board, planning and programming, and legal services; (2) fiscal operations, including the investment function; (3) administrative information technology; (4) space management; (5) employee personnel and records; (6) logistical activities that provide procurement, storerooms, and printing; (7) transportation services to the institution; (8) support services to faculty and staff that are not operated as auxiliary enterprises; and (9) activities concerned with community and alumni relations, including development and fund raising.
OPERATION AND MAINTENANCE OF PLANT	Expenditures for the administration, supervision, operation, maintenance, preservation, and protection of the university's physical plant. This function includes all expenditures for janitorial and utility services; repairs and ordinary or normal alterations of buildings, furniture, and equipment; care of grounds; maintenance and operation of buildings and other plant facilities; and facility planning and management.
SCHOLARSHIPS AND FELLOWSHIPS	Expenditures for scholarships and fellowships in the form of grants to students, resulting either from selection by the institution or from an entitlement program. It also includes trainee stipends, prizes, and awards, except trainee stipends awarded to individuals who are not enrolled in formal course work, which are charged to instruction, research, or public service as appropriate.
INTER- COLLEGIATE ATHLETICS	Intercollegiate Athletic accounts whose funding is supported by the University of Wyoming, including athletic scholarships but not including club sports, which fall under the student services program.

## UNIVERSITY OF WYOMING -- \*Department 067 FY 2014 BUDGET, SECTION I FUNDING BY SOURCE (\$s in Millions)



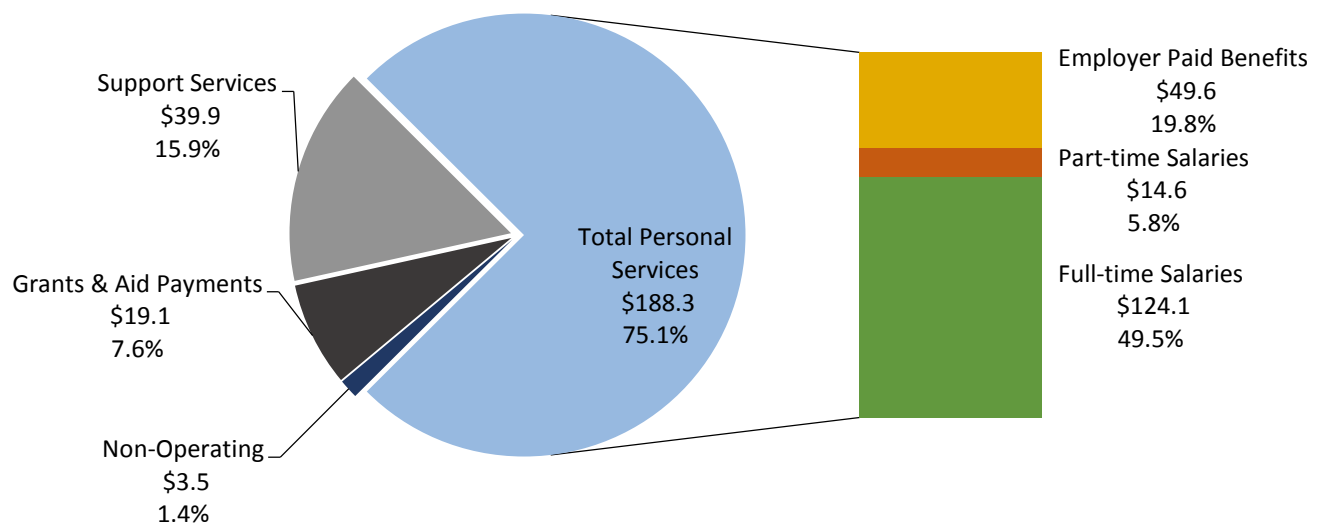
**Total Section I Department 067 Funding:**  
**\$250,806,807**

**\* 067 -- University of Wyoming**  
(Not including SER, NCAR, or  
retention incentive payment)

# **MAJOR MAINTENANCE FUNDING: HISTORY OF THE PROGRAM**

FISCAL YEARS	APPROPRIATION	REMARK
2004	\$ 2,889,128	First year of the program
2005-2006	\$ 12,585,599	
2005-2006	\$ 2,074,250	Special appropriation for fire suppression in residential facilities
2007-2008	\$ 27,255,144	
2009-2010	\$ 19,709,452	
2011-2012	\$ 0	UW received \$27 million in federal "stimulus" funds instead
2013-2014	\$ 19,033,964	
TOTAL TO DATE	\$ 83,547,537	

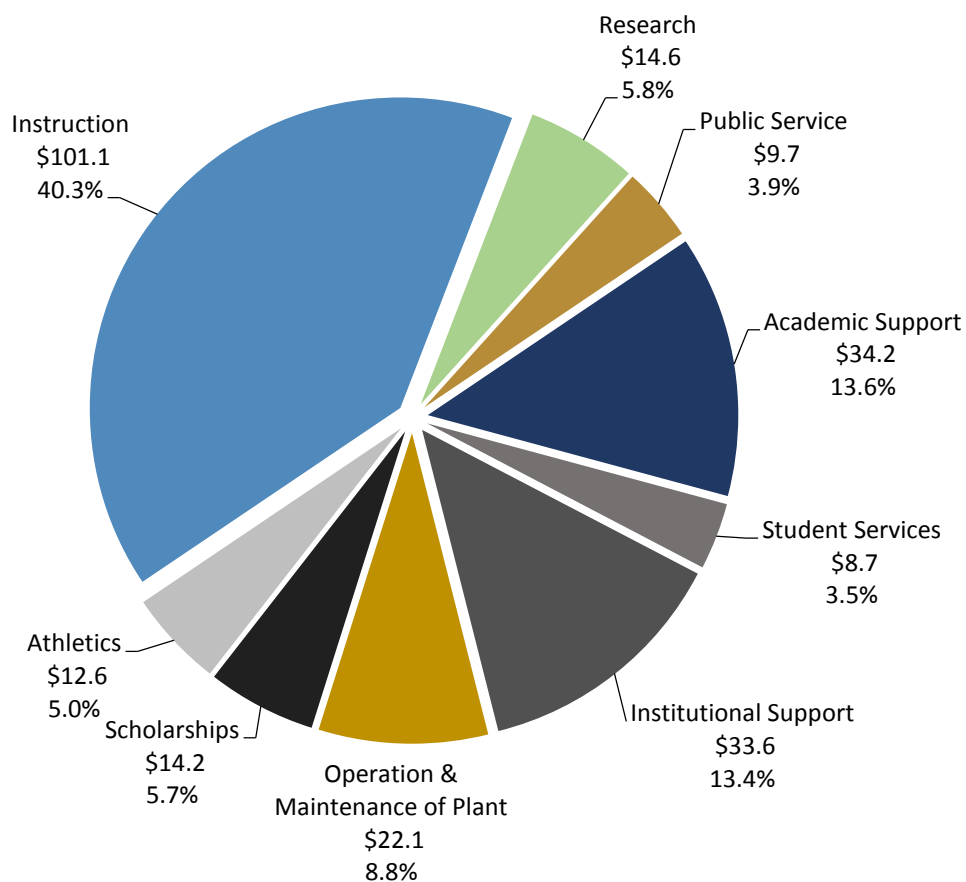
## **UNIVERSITY OF WYOMING -- \*Department 067 FY 2014 BUDGET, SECTION I EXPENDITURES BY CLASSIFICATION (\$s in Millions)**



**Total Section I Department 067 Funding:  
\$250,806,807**

**\* 067 -- University of Wyoming**  
(Not including SER, NCAR, or  
retention incentive payment)

**UNIVERSITY OF WYOMING -- \*Department 067  
FY 2014 BUDGET, SECTION I EXPENDITURES BY  
FUNCTION  
(\$s in Millions)**



**Total Section I Department 067 Funding:  
\$250,806,807**

**\* 067 -- University of Wyoming**  
(Not including SER, NCAR, or  
retention incentive payment)



**AGENDA ITEM TITLE:**

**Overview of Academic Personnel and Policies, including Tenure & Promotion and Reappointment, and Trustee Orientation.** Murdock/Jones

**CHECK THE APPROPRIATE BOX(ES):**

- ☒ Work Session
- ☐ Education Session
- ☐ Information Item
- ☐ Other               Specify:

**BACKGROUND AND POLICY CONTEXT OF ISSUE:**

Interim Vice President Murdock and Interim Associate Provost Jones will present information related to the Tenure and Promotion process. The Vice President for Academic Affairs typically briefs the Board on the reappointment, tenure and promotion review process at the annual March meetings. Reappointments of first-year academic personnel, including faculty and academic professionals (APs), are reviewed and approved by the Board at the March meetings. All other reappointment recommendations, all tenure and extended term recommendations and all promotion recommendations are reviewed and approved by the Board at the May meetings.

**AGENDA ITEM TITLE: Strategic Planning Progress, McGinity/Murdock**

**CHECK THE APPROPRIATE BOX(ES):**

- ☒ Work Session
- ☐ Education Session
- ☐ Information Item
- ☐ Other

President Dick McGinity and Interim Vice President for Academic Affairs Maggi Murdock will lead the Board in a discussion regarding UW's strategic planning process and update them on progress.

**AGENDA ITEM TITLE: Financial Services RFPs, Mai**

**CHECK THE APPROPRIATE BOX(ES):**

- ☒ Work Session
- ☐ Education Session
- ☐ Information Item
- ☐ Other Specify:

**BACKGROUND AND POLICY CONTEXT OF ISSUE:**

The University of Wyoming utilizes a number of financial services providers for banking, cashiering, credit card processing and investment services. Vice President Bill Mai will lead a discussion about issuing a series of Requests for Proposals over the next year to examine these financial relationships and determine if the university is receiving the best possible value and level of service from its providers. A Request for Proposal process also provides an opportunity for providers which the University of Wyoming does not currently have a relationship with to engage in a competitive bid process for university business.

**PRIOR RELATED BOARD DISCUSSIONS/ACTIONS:**

None.

**WHY THIS ITEM IS BEFORE THE BOARD:**

This is an information item.

**ARGUMENTS IN SUPPORT:**

Periodically examining existing business relationships and providing an opportunity for all qualified providers to compete for the University of Wyoming's business demonstrates due diligence and helps meet administration's and the Trustees' fiduciary responsibilities.

**ARGUMENTS AGAINST:**

It may be difficult to quantify cost savings or revenue enhancements due to the nature of existing, long-standing, banking relationships and account analysis methodologies.

**ACTION REQUIRED AT THIS BOARD MEETING:**

An indication from the Board to proceed with the Financial Services RFP process as outlined in this discussion.

**PRESIDENT'S RECOMMENDATION:**

The President recommends proceeding with the Financial Services RFP process as proposed.

**AGENDA ITEM TITLE: Discussion of May meeting topics – budget oversight; supplemental budget request planning, McGinity/Bostrom**

**CHECK THE APPROPRIATE BOX(ES):**

- ☒ Work Session
- ☐ Education Session
- ☐ Information Item
- ☐ Other                      Specify:

**BACKGROUND AND POLICY CONTEXT OF ISSUE:**

University President Dick McGinity and Trustee President Dave Bostrom will discuss with the Board proposed agenda topics and the schedule of activities for the May 2014 Board of Trustees meeting.

**1. Committee of the Whole: REGULAR BUSINESS**  
**Board of Trustees Committee Reports**

CHECK THE APPROPRIATE BOX(ES):

- ☐ Work Session  
☐ Education Session  
☐ Information Item  
☒ Other                      Specify: Committee of the Whole (Regular Business)

**A. Academics and Research Committee (Murdock)**

Trustee Lauer, Committee Chair

**B. Fiscal and Legal Affairs Committee (Mai/Lowe)**

Trustee Davis, Committee Chair

**C. Student Affairs/Athletics/Administration/Information Technology Committee (Axelson)**

Trustee Palmerlee, Committee Chair

**D. Alumni Board**

Trustee Lauer, Board Liaison

**E. Foundation Board**

Trustees Marsh and Bostrom, Board Liaisons

**F. Haub School of Environment and Natural Resources Board**

Trustee Davis, Board Liaison

**G. Energy Resources Council (ERC)**

Trustee Palmerlee, Board Liaison

**H. Trustee Award of Merit Ad Hoc Committee**

Trustee True (Time held should the committee be prepared to provide a report.)

**1. Committee of the Whole- CONSENT AGENDA**  
**Approval of Contracts and Grants, Gern**

CHECK THE APPROPRIATE BOX(ES):

- ☐ Work Session
- ☐ Education Session
- ☐ Information Item
- ☒ Other                      Specify: Committee of the Whole (Consent Agenda)

BACKGROUND AND POLICY CONTEXT OF ISSUE:

**Sponsored Programs**

The following sponsored programs are accepted subject to compliance with the University's policies on classified information and protection of human subjects. This report covers the period December 2013, January 2014 and February 2014.

**December 2013**

<b>Sponsor</b>	<b>Amount</b>	<b>Principal Investigator (PI)</b>	<b>Co-PI</b>	<b>Dept</b>	<b>Description</b>
American Association of Colleges of Pharmacy	\$8,770	Brown, Travis		School of Pharmacy	The Role of Cathepsin K in Mediating Hippocampal Synaptic Plasticity and Memory
BASF Corporation	\$3,000	Stump, William		Plant Sciences	Pest Management for the Crops of the High Plains
Bayer Corporation	\$13,500	Kniss, Andrew		Plant Sciences	Weed Science Research & Education Program
Bayer Corporation	\$14,900	Stump, William		Plant Sciences	Field Tests of New Generation Pesticides for Disease Management
Colorado Potato	\$6,000	Stump, William		Plant Sciences	Field Tests of Generic and New Generation Chemistries for Potato Pest Suppression, Bacterial Ringrot Symptom Expression in Various Potato Cultivars
Colorado State University	\$25,000	Bisha, Bledar		Animal Science	Modified Bioaerosol Sampling for Presence of Viruses in Agricultural Environments
Colorado State University	\$98,479	Tinker, Daniel		Botany	Sustainable Biofuel Feedstocks from Beetle-killed Wood: Bioenergy Alliance Network of the Rockies (BANR)
DuPont	\$9,000	Stump, William		Plant Sciences	Field Tests of Efficacy and Crop Safety of New and Established Chemistries for Pest Management
FMC Corporation	\$8,500	Kniss, Andrew		Plant Sciences	Weed Control in Agronomic Crops
Idaho Power Company	\$25,000	French, Jeffrey		Atmospheric Science	PreSnowie Investigation

Kansas State University	\$23,000	Despain, Johnathan		UW Extension	4-H Military Partnership Grant
Loomis, John	\$17,499	Harnisch, Brian		Wyoming Survey & Analysis Center	Conduct a Mixed Mode Survey of Solar Panel Users
Muley Fanatic Foundation	\$60,000	Monteith, Kevin		Zoology	Nutritional Carrying Capacity and Factors Limiting Population Growth of Mule Deer in the Wyoming Range
National Security Technologies LLC	\$200,940	Wright, Cameron		Electrical Engineering	145963 TO 2 - Muon Tracking to Detect Special Nuclear Materials
Natrona County	\$11,500	Call, Patrick		Residence Life	Lower Cutoff of the Bridle Trail Signage, Erosion Control and Repairs
North Dakota State University	\$112,602	Canen, Eric		Wyoming Survey & Analysis Center	North Dakota Strategic Prevention Framework State Incentive Grant Evaluation 2013
PlanktOMICS LLC	\$15,713	Herbert, Stephen		Plant Sciences	Chemical Management of Algae
Sidco Minerals, Inc.	\$100,000	Fan, Maohong		Chemical & Petroleum Engr	Producing Syngas Desired for Coal to Liquids with Iron Based Catalyst
US Dept of Ag FS	\$6,000	Redder, Alan		Wyoming Natural Diversity Database	Database for Region 4 Forests in Wyoming_2013
US Dept of Ag NIFA	\$388,087	Kniss, Andrew		Plant Sciences	Efficacy and Economics of Cultural and Mechanical Weed Control Practices for Herbicide-Resistant Weed Management
US Dept of Ag NRCS	\$21,000	Hamerlinck, Jeffrey		Wyoming Geographic Info Sci Ctr	IRMA Update and Maintenance_FY2014
US Dept of Ag NRCS	\$5,000	Brown, Donna		College of Ag, Dean's Office	Student Engagement Networking Drive (SEND) Program
US Dept of Defense ONR	\$109,000	Mavriplis, Dimitri J		Mechanical Engineering	Efficient and Accurate Overset Mesh Methodology for Dynamic Ship/Aircraft Interface Simulations



US Dept of Education	\$5,400,142	Carter, Joanna		Student Financial Aid	PELL Grant 12-13
US Dept of Education	\$910	Carter, Joanna		Student Financial Aid	Teacher Education Assistance for College & Higher Ed (TEACH) 12-13
US Dept of Education	\$5,015,048	Carter, Joanna		Student Financial Aid	Pell Grant 13-14
US Dept of Health and Human Services NIH	\$254,304	Fay, David		Molecular Biology	Developmental Functions of Rb Family Proteins
US Nat'l Science Foundation	\$28,001	Kelly, Robert		Anthropology	Doctoral Dissertation Improvement Grant: Testing Paleoindian Colonization Models in New England
US Nat'l Science Foundation	\$133,973	Holbrook, W.		Geology/Geophysics	Collaborative Research: Imaging Plate Boundary Processes Within the Cascadia Subduction Zone Offshore Central Washington with Open-access Marine Seismic Data
US Small Business Administration	\$172,400	Kline, Jill		Wyoming Sm Bus Dev Ctr	Wyoming Small Business Development Center_FY2014; and SBDC FY 14 - Region 1-6
Utah, University of	\$25,000	Deng, Min		Atmospheric Science	Observational and Modeling Studies of Cirrus and Boundary Layer Clouds Using A-Train Data
Various Sponsors	\$12,500	Kunkel, Paul		TransPark	ACTA Gem City Grand Capital Reserve
Various Sponsors	\$379	Kline, Jill		Wyoming Sm Bus Dev Ctr	Vehicle Mileage Reimbursement
Various Sponsors	\$24,518	Stewart, Larry Ray		Manufacturing Works	Program Income for FY14 NIST WY Manufacturing Extension Partnership
Various Sponsors	\$700	Walrath, David		Mechanical Engineering	Wyoming Small Business Engineering Assistance

Various Sponsors	\$184	MacLean, William		Wyoming Inst for Disabilities	UAP Core Projects
Various Sponsors	\$5,000	MacLean, William		Wyoming Inst for Disabilities	UAP Training
Various Sponsors	\$5,687	Root-Elledge, Sandra Lee		Wyoming Inst for Disabilities	UAP Technical Assistance
Various Sponsors	\$5,500	McDonald, David		Zoology	Microsatellite DNA Analysis of Black Bears
Washington State University	\$110	Feuz, Bridger		UW Extension	Wyoming Master Cattleman--Ranch Management Institute
Wyoming Arts Council	\$2,000	Aragon, Cecelia		Theatre/Dance	Chicano Art Collection, Chicanitas
Wyoming Association of Sheriffs and Chiefs of Police	\$11,910	Bade, Chad		University Police	Enforcing Underage Drinking Laws
Wyoming Dept of Education	\$99,619	Root-Elledge, Sandra Lee		Wyoming Inst for Disabilities	Wyoming Clearinghouse for Accessible Instructional Materials (NIMAC: National Instructional Materials Access Center)
Wyoming Dept of Education	\$138,860	Root-Elledge, Sandra Lee		Wyoming Inst for Disabilities	Community of Practice in Transition
Wyoming Dept of Enterprise Technology Services	\$300,000	Hamerlinck, Jeffrey		Wyoming Geographic Info Sci Ctr	State GIS Clearinghouse Development and Maintenance
Wyoming Dept of Health	\$72,500	Wambeam, Rodney		Wyoming Survey & Analysis Center	Comprehensive Evaluation of Wyoming Cancer Prevention and Control Programs and Partnerships for Success II Grant
Wyoming Dept of Transportation	\$27,058	Wambeam, Rodney		Wyoming Survey & Analysis Center	Highway Safety Grant: Evaluation of Wyoming's Initiative to Prevent Impaired Driving

Wyoming Dept of Transportation	\$89,672	Ahmed, Mohamed		Civil Engineering	Effective Shoulder and Centerline Rumble Strips; and State Match
Wyoming Game and Fish Dept	\$10,000	Kauffman, Matthew		Zoology	Assessing Moose Response to Energy Development in the Hoback Basin: Sublette Moose Herd Population Study
Wyoming Game and Fish Dept	\$16,667	Hamerlinck, Jeffrey		Wyoming Geographic Info Sci Ctr	Geospatial Services: WISDOM Maintenance
Wyoming Humanities Council	\$10,000	Graham, Andrea M		American Studies	Art of the Hunt Programs

**TOTAL 12/2013**                      **\$13,145,130**

**Total From 7/2013**                      **\$7,704,125**

**Total From 8/2013**                      **\$17,092,804**

**Total From 9/2013**                      **\$6,727,785**

**Total From 10/2013**                      **\$10,612,952**

**Total From 11/2013**                      **\$3,510,742**

**Total Year to Date**                      **\$58,793,539**

**INSTITUTIONAL AWARDS FISCAL YEAR 2014**

US Dept of Education	\$17,778,920	Carter, Joanna		Student Financial Aid	Direct Student Loan 12-13
US Dept of Education	\$41,629,607	Carter, Joanna		Student Financial Aid	Direct Student Loan 13-14

**Total Institutional Awards**                      **\$59,408,527**

**GRAND TOTAL**                      **\$118,202,066**

**January 2014**

<b>Sponsor</b>	<b>Amount</b>	<b>Principal Investigator (PI)</b>	<b>Co-PI</b>	<b>Dept</b>	<b>Description</b>
Alere Wellbing, INC	\$150,000	Feldman, Laura		Wyoming Survey & Analysis Center	Evaluation of New Mexico Anti-tobacco Media Campaign
American Society of Plant Taxonomists	\$6,500	Brown, Gregory		Botany	Operational Support
Corporation for Public Broadcasting	\$74,140	Kuzmych, Christina		Wyoming Public Radio	Wyoming Public Media Education Reporter
Crop Research Foundation of Wyoming	\$3,000	Nachtman, Jerry		Cooperative Ext Serv	Wheat Variety Trials, FY2013
EdLab Group Foundation	\$43,662	Hime, Shawn		Wyoming Survey & Analysis Center	LinkWYOMING Monitoring and Evaluation_2013-2014
GlycoBac	\$82,134	Jarvis, Donald		Molecular Biology	Glycoengineering Insect Cells
Inberg-Miller Engineers	\$17,864	Holbrook, W. Steven		Geology/Geophysics	Seismic Site Characterization, Rock Springs, Wyoming
Lawrence Livermore National Laboratory	\$52,886	Sitaraman, Jayanarayanan		Mechanical Engineering	Application and Validation of the Meso-scale/Micro-scale Coupling for Wind Plant Aerodynamics
National 4-H Council	\$97,828	Despain, Johnathan		Cooperative Ext Serv	Wyoming 4-H OJJDP Youth Mentoring Project_2013-2015 - Wind River; and Uinta County; and Big Horn Co.
North Dakota State Univ	\$29,495	Young, Rhonda		Civil Engineering	Connected Vehicle Weather Data for Operation of Rural Variable Speed Limit Corridors
Samson Resources	\$10,000	Beck, Jeffrey		Ecosystem Science & Management	Factors Influencing Pronghorn Survival and Reproduction in South-Central Wyoming

US Dept of Ag NIFA	\$65,546	Weigel, Randolph		Family & Consumer Sci	Wyoming AgrAbility
US Dept of Ag NRCS	\$35,250	Thompson, Jennifer		Cooperative Ext Serv	Barnyards and Backyards--An Innovative Project to Reach Out to Wyoming's Small Acreage Landowner with Conservation Programs
US Dept of Education	\$5,005	Carter, Joanna		Student Financial Aid	Student Educational Opportunity Grant 13-14
US Dept of Interior FWS	\$23,295	Beck, Jeffrey		Ecosystem Science & Management	Inventory of Vegetation Cover for Uplands of Bowdoin National Wildlife Refuge
US Dept of Interior NPS	\$50,000	Larson, Mary		Anthropology	National Register of Historic Places Nomination for the Northeast Entrance Road, YNP, Montana and Wyoming
US Nat'l Aeronautics and Space Admin	\$68,080	Heinz, Stefan		Mathematics	Turbulence Structure Preserving Unified and Dynamic Large Eddy Simulation of Separated Flows
US Nat'l Aeronautics and Space Admin	\$108,300	Liu, Xiaohong		Atmospheric Science	Developing and Evaluating an Advanced Aerosol Module in Geos-5 for Data Assimilation and Climate Studies
US Nat'l Science Foundation	\$8,407	McElroy, Brandon		Geology & Geophysics	Collaborative Research: RAPID Assessment of 2013 Flood Sedimentation, Button Rock Reservoir, North St. Vrain Watershed, CO
Utah State Univ	\$59,525	Freeburn, James		Ag Experiment Station	2013 Western SARE/NACAA Fellows Program
Various Sponsors	\$351	Kline, Jill		Wyoming Sm Bus Dev Ctr	Vehicle Mileage Reimbursement
Various Sponsors	\$113,433	Kline, Jill		Wyoming Sm Bus Dev Ctr	Program Income for FY 14 SBDC SBA

Various Sponsors	\$1,615	Kline, Jill		Wyoming Sm Bus Dev Ctr	Market Research Center Program Income
Various Sponsors	\$21,292	Stewart, Larry Ray		Manufacturing Works	Program Income for FY14 NIST WY Manufacturing Extension Partnership
Various Sponsors	\$833	Jordan, Gregory		Wyoming Sm Bus Dev Ctr	PTAC Program Income FY14
Various Sponsors	\$298	Kline, Jill		Wyoming Sm Bus Dev Ctr	Vehicle Management
Various Sponsors	\$3,634	Root-Elledge, Sandra Lee		Wyoming Inst for Disabilities	Fee Book Income
Various Sponsors	\$56	MacLean, William		Wyoming Inst for Disabilities	UAP Training
Various Sponsors	\$2,950	Root-Elledge, Sandra Lee		Wyoming Inst for Disabilities	UAP Technical Assistance
Various Sponsors	\$80	Clarke, Pamela		School of Nursing	Various Nursing Schools Program Development
Various Sponsors	\$450	Redder, Alan		Wyoming Natural Diversity Database	Database Management
WY Association of Conservation Districts	\$22,770	Paige, Virginia		Ecosystem Science & Management	Water Quality Monitoring and Certification Program 2014
Wyoming Cultural Trust Fund	\$22,000	Carlisle, Ashley		Art Department	4th Biennial Western Cast Iron Art Conference
Wyoming Cultural Trust Fund	\$10,000	Antell, Judith		American Indian Studies	Tekcno Pow Wow
Wyoming Cultural Trust Fund	\$50,000	Graham, Andrea M		American Studies	Art of the Hunt, Exhibit Fabrication and Installation
Wyoming Dept of Agriculture	\$19,997	Horn, Blaine Eugene		Cooperative Ext Serv	Perennial Cool-season Grasses for Hay Production and Fall Grazing Under Full and Limited Irrigation

Wyoming Dept of Agriculture	\$20,000	Islam, Md		Plant Sciences	Effect of Planting Time and Fertilizer Management on Quinoa Production in Wyoming
Wyoming Dept of Environmental Quality	\$277,386	Northam, Mark		School Enrgy Resources	Development of a Subcommercial scale CO2 separation research and demonstration project (WY-CUSP)
Wyoming Dept of Environmental Quality	\$11,356	Stewart, Larry Ray		Manufacturing Works	Pollution Prevention/Energy Audits for Hospitals throughout the State of Wyoming
Wyoming Dept of Health	\$163,500	MacLean, William		Wyoming Inst for Disabilities	Administration of the Inventory for Client and Agency Planning (ICAP) Assessment Tool; and Federal Portion
Wyoming Dept of Health	\$1,086,480	Lewis, Aimee L		School of Pharmacy	Drug Utilization Review (DUR) and Pharmacy and Therapeutic (P&T) Committee Programs
Wyoming Dept of Transportation	\$20,851	Kunkel, Paul		TransPark	5311 WYDOT/FTA Albany County Transportation Authority: Gem City Grand Bus Service and ADA Paratransit Service; and 5311-13-FTA-52 - Maintenance 5311
Wyoming Dept of Transportation	\$37,500	Ksaibati, Khaled		Civil Engineering	Wyoming Local Technical Assistance Program (LTAP), 2014 Fed Portion; and Non-federal Portion
Wyoming Dept of Transportation	\$156,250	Ksaibati, Khaled		Civil Engineering	Wyoming Technology Transfer Center, 2014 Fed; and Nonfed
Wyoming Humanities Council	\$2,837	Garrison, Jean		Intl Studies	General Support for speaker series and graduate assistant
Wyoming State Geological Survey	\$3,000	Chamberlain, Kevin		Geology & Geophysics	CATIMS Zircon or In-situ Baddeleyite U-Pb Date in Support of the Northridge 7.5 Minute Quad State Map Project



Wyoming State Parks and Cultural Resources	\$12,500	Walker, Danny		Anthropology	South Pass City Historical Site: Interns for Artifact Curation
--	----------	---------------	--	--------------	--

**TOTAL 1/2014** \$3,052,336

**Total From 7/2013** \$7,704,125

**Total From 8/2013** \$17,092,804

**Total From 9/2013** \$6,727,785

**Total From 10/2013** \$10,612,952

**Total From 11/2013** \$3,510,742

**Total From 12/2013** \$13,145,130

**Total Year to Date** \$61,845,876

**INSTITUTIONAL AWARDS FISCAL YEAR 2014**

US Dept of Education	\$17,778,920	Carter, Joanna		Student Financial Aid	Direct Student Loan 12-13
US Dept of Education	\$41,629,607	Carter, Joanna		Student Financial Aid	Direct Student Loan 13-14

**Total Institutional Awards** \$59,408,527

**GRAND TOTAL** \$121,254,403

**February 2014**

<b>Sponsor</b>	<b>Amount</b>	<b>Principal Investigator (PI)</b>	<b>Co-PI</b>	<b>Dept</b>	<b>Description</b>
Albany County School District	\$11,000	Gaudreault, Karen Lux		Physical/Health Education	Healthy Pokes: Education and Mentoring to Enhance Child Health in Laramie
America View, Inc.	\$23,673	Sivanpillai, Ramesh		Wyoming Geographic Info Sci Ctr	StateView Program Development and Operations for the State of Wyoming
American Society of Plant Taxonomists	\$3,300	Brown, Gregory		Botany	Operational Support
Battelle Memorial Institute	\$30,000	Liu, Xiaohong		Atmospheric Science	Wildfires and Regional Climate Variability, Mechanisms, Modeling and Prediction
BooneCrockett	\$15,500	Monteith, Kevin		Zoology	Fitness Consequences of Energy Development: An Effort to Understand and Reduce the Human Footprint on Large Ungulate Populations 2014
BP Amoco	\$85,000	Naughton, Jonathan	Balas, Mark; Keely, Robert; Lindberg, William; Mavriplis, Dimitri; Morton, Scott; Parish, Thomas; Tanner Eisenhauer, Jennifer; Turner, John; Walrath, David	Mechanical Engineering	BP Research Funds for Wind Energy

California Institute of Technology	\$89,988	Parkinson, Bruce		Chemistry	NSF Center for Chemical Innovation: Powering the Planet
Colorado State University	\$69,976	Lauenroth, William		Botany	North Central Climate Science Center University Consortium Research Plan FY13
Duke University	\$5,000	Reverand, Cedric D.		English	18th Century Life Journal
Exxon Mobil Education Foundati	\$80,000	Kobulnicky, Henry		Physics & Astronomy	2014 ExxonMobil Bernard Harris Summer Science Camp
Georgia, University of	\$83,906	Jarvis, Donald		Molecular Biology	Research Resource for Integrated Glycotechnology
Idaho Power Company	\$2,000	French, Jeffrey		Atmospheric Science	PreSnowie Investigation
Ivinson Memorial Hospital	\$5,000	Gaudreault, Karen Lux		Physical/Health Education	Healthy Pokes: Education and Mentoring to Enhance Child Health in Laramie
Kansas State University	\$34,390	Despain, Johnathan Carvel		Cooperative Ext Serv	2014 DoD Deployment Support Camp Grant: Military Kids Camp
Laramie Audubon Society	\$500	Murphy, Melanie		Ecosystem Science & Management	Climate Change Effects on Amphibian Persistence in the Plains and Prairie Pothole Region
Laramie Audubon Society	\$500	Murphy, Melanie		Ecosystem Science & Management	Effects of Landscape Change on Greater Sage Grouse
Life R U Ready?	\$5,000	Templeton, Cherie K		Survey Research Center	Evaluate Life R U Ready? Programming
Nevada, Las Vega, University of	\$55,000	Guiberson, Mark Michael		Speech Pathology	Telehealth Behavioral Phenotype Language Impairment Markers for Spanish-speakers

Notre Dame, University of	\$66,146	Finnoff, David		Economics & Finance	Forecasting spread and bioeconomic impacts of Aquatic Invasive Species
Phi Upsilon Omicron Educationa	\$2,500	Vincenti, Virginia B.		Family & Consumer Sci	Elder Financial Exploitation by Family Members with Powers of Attorney: What Family Members' Experiences Reveal About this Problem, its Causes, and Consequences
Planetary Science Institute	\$23,996	Adidharma, Hertanto		Chemical & Petroleum Engr	CRYOCHEM: A Thermodynamic Equation of State of Fluid and Solid Solutions at Extremely Low Temperatures for Applications in the Outer Solar System
Sigma Xi	\$400	Murphy, Melanie		Ecosystem Science & Management	Climate Change Effects on Wetland Ecosystem Services Across the Prairie Pothole Region
Texas A&M University	\$104,121	Schumaker, Brant		Veterinary Science	Foreign Animal and Zoonotic Disease Center Career Development Fellowship
US Dept of Ag FS	\$77,000	Jones, George		Wyoming Natural Diversity Database	Inventory of Groundwater-Dependent Ecosystems on the Bighorn National Forest
US Dept of Ag FS	\$11,706	Keinath, Douglas		Wyoming Natural Diversity Database	Monitoring of Snow Hare Abundance in Medicine Bow National Forest
US Dept of Ag FS	\$37,303	Keinath, Douglas		Wyoming Natural Diversity Database	Songbird Monitoring on the Medicine Bow National Forest, Thunder Basin National Grassland, and the Bighorn National Forest as part of the Integrated Monitoring in Bird Conservation Regions 2014
US Dept of Ag NIFA	\$500,000	Kniss, Andrew		Plant Sciences	Efficacy and Economics of Cultural and Mechanical Weed Control Practices for Herbicide-Resistant Weed Management

US Dept of Defense AF ROTC	\$66,422	Carter, Joanna		Student Financial Operations	Air Force ROTC 12-13
US Dept of Education	\$4,679,312	Carter, Joanna		Student Financial Aid	Pell Grant 13-14
US Dept of Education	\$255,471	Root-Elledge, Sandra Lee		Wyoming Inst for Disabilities	Wyoming State Plan for Assistive Technology, FY 2013
US Dept of Health and Human Services NIH	\$241,965	Wall, Daniel		Molecular Biology	Protein Exchange and Self Recognition in Myxobacteria Biofilms
US Dept of Interior BLM	\$65,000	Tanaka, John		Ecosystem Science & Management	Sustainable Rangelands Roundtable
US Dept of Interior FWS	\$154,870	Lauenroth, William		Botany	Modeling Plant Community Composition and Vegetation Structure in Core Sage Grouse Habitats
Utah State Univ	\$36,703	Sitaraman, Jayanarayanan		Mechanical Engineering	Strand Grid Methodology for Dynamic Ship/Aircraft Interaction Simulations
Various Sponsors	\$3,136	Kline, Jill		Wyoming Sm Bus Dev Ctr	Program Income for FY 14 SBDC SBA
Various Sponsors	\$554	Kline, Jill		Wyoming Sm Bus Dev Ctr	Market Research Center Program Income
Various Sponsors	\$44,218	Stewart, Larry Ray		Manufacturing Works	Program Income for FY14 NIST WY Manufacturing Extension Partnership
Various Sponsors	\$3,095	Jordan, Gregory		Wyoming Sm Bus Dev Ctr	PTAC Program Income FY14
Various Sponsors	\$500	Williams, Karen		Family & Consumer Sci	FCS support
Various Sponsors	\$7,321	Root-Elledge, Sandra Lee		Wyoming Inst for Disabilities	Fee Book Income
Various Sponsors	\$735	Lake, Scott		Animal Science	Research Laboratory Expenses

Various Sponsors	\$5	Root-Elledge, Sandra Lee		Wyoming Inst for Disabilities	UAP Technical Assistance
Various Sponsors	\$900	Redder, Alan		Wyoming Natural Diversity Database	Database Management
Various Sponsors	\$1,110	Hamerlinck, Jeffrey		Wyoming Geographic Info Sci Ctr	Spatial Data and Visualization Center
Washington State University	\$256	Feuz, Bridger		Cooperative Ext Serv	Wyoming Master Cattleman--Ranch Management Institute
Western Sugar Cooperative	\$15,000	Kniss, Andrew		Plant Sciences	Weed Biology, Ecology, and Management in Sugarbeet
Western Sugar Cooperative	\$23,160	Stump, William		Plant Sciences	Sugar Beet Pest Management in the High Plains Region
Winfield Solutions, LLC	\$8,000	Kniss, Andrew		Plant Sciences	Formulation and adjuvant research
Wyoming Business Council	\$10,000	Jordan, Gregory		Wyoming Sm Bus Dev Ctr	Wyoming Business Council assistance wit the Gro-Biz Conference and Idea Expo
Wyoming Dept of Agriculture	\$20,000	Stayton, Mark		Molecular Biology	Genetics of Resistance to High Altitude Disease (Brisket Disease) in Yak/Cow Hybrids
Wyoming Dept of Agriculture	\$8,475	Groose, Robin		Plant Sciences	Participatory Breeding of Winter Hardy Vegetable Peas for Wyoming
Wyoming Dept of Agriculture	\$20,000	Islam, Md		Plant Sciences	Evaluation of Quinoa as a Leafy Green Crop for Adaptation in Wyoming
Wyoming Dept of Environmental Quality	\$3,000,000	Farrell, Maggie		Library	AML Funds for Library Acquisitions

Wyoming Dept of Environmental Quality	\$37,500	Stewart, Larry Ray		Manufacturing Works	Pollution Prevention Audits (P2) and Recommendations for Practices to Reduce Water, Energy and Hazardous Chemical Usage
Wyoming Dept of Environmental Quality	\$750,154	Blake, Laurence		Facilities Planning	AML Funds for UW-Level II Planning for Engineering Facilities
Wyoming Dept of Environmental Quality	\$350,000	Blake, Laurence		Facilities Planning	AML Funds for Level II Planning for Engineering Facilities
Wyoming Dept of Health	\$192,083	Wambeam, Rodney		Wyoming Survey & Analysis Center	SAMHSA Supplement for Wyoming State Epidemiological Outcomes Workgroup (SEOW-PFS II)
Wyoming Game and Fish Dept	\$5,900	Murphy, Melanie		Ecosystem Science & Management	Identifying Restoration and Land-use Priorities for Sage-grouse Phase II
Wyoming Game and Fish Dept	\$20,000	Hamerlinck, Jeffrey		Wyoming Geographic Info Sci Ctr	Geospatial Services: WISDOM Maintenance
Wyoming Game and Fish Dept	\$17,061	Beck, Jeffrey		Ecosystem Science & Management	Effects of Mowing and Herbicide Treatments on the Nutritional Quality of Sagebrush in South-Central Wyoming
Wyoming Governor's Office	\$29,000	Smutko, Leonard		Inst Environmental and Natural Resources	Governor's Task Force on Forest Health
Wyoming Humanities Council	\$750	Ward, Seth		Religious Studies	Dr. Marc Shapiro: Academic Integrity in the Teaching of Religion
Wyoming Wildlife Trust	\$38,280	Monteith, Kevin		Zoology	Identifying How Habitat Treatments Influence Nutritional Condition, Reproduction, and Survival of Wyoming Range Mule Deer II

Xella Mexicana	\$97,631	Tanner Eisenhauer, Jennifer		Civil Engineering	Investigation of Autoclaved Aerated Concrete Thin Panel Systems: Floor and Cladding Elements
----------------	----------	-----------------------------------	--	-------------------	--

**TOTAL 2/2014** \$11,627,471

**Total From 7/2013** \$7,704,125

**Total From 8/2013** \$17,092,804

**Total From 9/2013** \$6,727,785

**Total From 10/2013** \$10,612,952

**Total From 11/2013** \$3,510,742

**Total From 12/2013** \$13,145,130

**Total From 1/2014** \$3,052,336

**Total Year to Date** \$73,473,347

**INSTITUTIONAL AWARDS FISCAL YEAR 2014**

US Dept of Education	\$17,778,920	Carter, Joanna		Student Financial Aid	Direct Student Loan 12-13
US Dept of Education	\$41,629,607	Carter, Joanna		Student Financial Aid	Direct Student Loan 13-14

**Total Institutional  
Awards** \$59,408,527

**GRAND TOTAL** \$132,881,874



## 2. Committee of the Whole- CONSENT AGENDA

### Personnel, Murdock

CHECK THE APPROPRIATE BOX(ES):

- ☐ Work Session  
☐ Education Session  
☐ Information Item  
☒ Other                      Specify: Committee of the Whole (Consent Agenda)

### A. Items for Action Recommended by the President

#### APPOINTMENTS

##### 1. Faculty

It is recommended to the Trustees of the University of Wyoming that the following faculty appointments be approved as indicated.

#### College of Arts & Sciences

<u>Name</u>	<u>Rank</u>	<u>Salary</u>	<u>Beginning of Appointment</u>
-------------	-------------	---------------	---------------------------------

##### *Department of Communication & Journalism*

<b>LeFebvre, Leah</b>	Instructor	\$60,000/AY	01/10/2014
-----------------------	------------	-------------	------------

Leah LeFebvre received a B.A. (2005) in Communication and Political Science from the University of Wisconsin-La Crosse, an M.A. (2007) in Communication from the University of Wisconsin-Milwaukee, and a Ph.D. (2013 expected) in Communication Studies from the University of Texas. Dr. LeFebvre was a Graduate Assistant at the University of Texas since 2012. The title of this tenure track position will convert to Assistant Professor upon receipt of documentation of degree completion.

##### *Department of Statistics*

<b>Robertson, Blair Lennon</b>	Assistant Professor	\$70,008/AY	01/10/2014
--------------------------------	---------------------	-------------	------------

Blair Robertson received a B.S. (2006), a B.A. Hons. (2007), and a Ph.D. (2011) in Mathematics from the University of Canterbury, New Zealand. Dr. Robertson has been a Lecturer in the Mathematics and Statistics Department at the University of Canterbury since 2010.

##### *Department of Zoology & Physiology*

<b>Benson-Amram, Sarah</b>	Assistant Professor	\$70,008/AY	01/10/2014
----------------------------	---------------------	-------------	------------

Sarah Benson-Amram received a B.A. (2001) in Neurobiology and Animal Behavior Concentration from Cornell University, and a dual Ph.D. (2011) in Zoology and Ecology, Evolutionary Biology and Behavior from Michigan State University. Dr. Benson-Amram has been a Postdoctoral Scientist in the Department of Zoology at Michigan State University since 2012.

### College of Engineering and Applied Science

<u>Name</u>	<u>Rank</u>	<u>Salary</u>	<u>Beginning of Appointment</u>
-------------	-------------	---------------	---------------------------------

#### *Department of Chemical & Petroleum Engineering*

<b>Gasem, Khaled A.M.</b>	Professor	\$257,508/FY	09/01/2013
---------------------------	-----------	--------------	------------

Khaled Gasem is a graduate of the University of California, Berkley (B.A.), the Colorado School of Mines (M.S), and Oklahoma State University (Ph.D.). Dr. Gasem has spent the majority of his 30-year academic career at Oklahoma State, where he established himself as one of the institution's premier faculty members. He rose through the academic ranks and received several prestigious academic appointments acknowledging his work as a teacher and scholar; these appointments include being named the Bartlett Chair, Amoco Chair, the R.N. Maddox Professorship, and Regents Professor, which is the highest academic recognition possible at OSU and is awarded for a distinguished record of nationally recognized excellence and scholarship. As a researcher, Dr. Gasem has been actively involved in experimental, theoretical, and process thermodynamics, with focus on the energy sector and product/process development. Dr. Gasem's first assignment will be to serve as Interim Dean of the College of Engineering and Applied Science while a national search is conducted for a permanent dean. Dr. Gasem comes to the university at the rank of professor with tenure.

### College of Health Sciences

<u>Name</u>	<u>Rank</u>	<u>Salary</u>	<u>Beginning of Appointment</u>
-------------	-------------	---------------	---------------------------------

#### *School of Pharmacy*

<b>Mann, Allison M.</b>	Clinical Assistant Professor	\$89,004/FY	02/03/2014
-------------------------	------------------------------	-------------	------------

Allison Mann received a B.A. (2004) in Chemistry and Biochemistry from the University of Colorado, and a Pharm.D. (2009) from the University of Colorado Denver. She has been a Clinical Pharmacist at the University of Pittsburgh Medical Center since 2010.

### University Libraries

<u>Name</u>	<u>Rank</u>	<u>Salary</u>	<u>Beginning of Appointment</u>
-------------	-------------	---------------	---------------------------------

#### *Collection Development*

<b>Tharp, Shannon</b>	Assistant Librarian	\$47,004/FY	02/03/2014
-----------------------	---------------------	-------------	------------

Shannon Tharp received a B.A. (2005) in Journalism and English Writing from Drake University, an M.F.A. (2007) in Creative Writing and an M.L.I.S. (2013) from the University of Washington. Ms. Tharp has been an Archives Assistant at the University of Washington since 2010.

## FIRST-YEAR TENURE-TRACK REAPPOINTMENTS

### 1. Faculty

It is recommended to the Trustees of the University of Wyoming that the reappointments for the following first-year tenure-track faculty be approved as indicated. Consistent with Trustees' Regulation V.D and University Regulation 803.3.e.ii, the reappointments are through the third year of employment, with the next reappointment review scheduled for Spring 2015.

#### College of Agriculture and Natural Resources

Name

Rank

##### *Department of Animal Science*

Bisha, Bledar

Assistant Professor

Guo, Wei

Assistant Professor

##### *Department of Ecosystem Science and Management*

Zhu, Mengqiang

Assistant Professor

##### *Department of Family & Consumer Sciences*

Irick, Erin M.

Instructor

##### *Department of Plant Sciences*

Jabbour, Randa

Assistant Professor

#### College of Arts & Sciences

Name

Rank

##### *Chicano Studies Program*

Fonseca, Vanessa R.

Assistant Professor

##### *Department of Art*

Fine, Peter

Assistant Professor

##### *Department of Communication & Journalism*

Muddiman, Ashley

Assistant Professor

##### *Department of Criminal Justice*

Boman, John H. IV

Assistant Professor

##### *Department of Geology & Geophysics*

Grana, Dario

Assistant Professor

##### *Department of Music*

Dalrymple, Holly A

Assistant Professor

*Department of Physics & Astronomy*

Chien, TeYu	Assistant Professor
-------------	---------------------

*Department of Psychology*

Minear, Meredith E.	Assistant Professor
---------------------	---------------------

*Department of Sociology*

Noy, Shiri	Assistant Professor
------------	---------------------

*Department of Theatre & Dance*

Huizinga, Sharon	Assistant Professor
------------------	---------------------

*Department of Zoology & Physiology*

Lanier, Hayley C	Assistant Professor
------------------	---------------------

**College of Business**

<u>Name</u>	<u>Rank</u>
-------------	-------------

*Department of Accounting*

Embree, Joy Lynn	Assistant Professor
------------------	---------------------

*Department of Economics & Finance*

Thunstrom, Linda	Assistant Professor
------------------	---------------------

*Department of Management & Marketing*

Lewellyn, Krista B.	Assistant Professor
---------------------	---------------------

**College of Education**

<u>Name</u>	<u>Rank</u>
-------------	-------------

*Department of Professional Studies*

Dousay, Tonia Anne	Assistant Professor
--------------------	---------------------

*Department of Secondary Education*

Hendryx, Jason D.	Assistant Professor
-------------------	---------------------

**College of Engineering and Applied Science**

<u>Name</u>	<u>Rank</u>
-------------	-------------

*Department of Chemical & Petroleum Engineering*

Aryana, Saman	Assistant Professor
---------------	---------------------

*Department of Civil & Architectural Engineering*

Ahmed, Mohamed	Assistant Professor
----------------	---------------------

Wang, Liping	Assistant Professor
--------------	---------------------

*Department of Computer Science*

Clune, Jeffrey M.

Assistant Professor

**College of Health Sciences**

Name

Rank

*Division of Communication Disorders*

Cooley Hideecker, Mary Jo

Assistant Professor

*School of Nursing*

Fischer, Shelly A.

Assistant Professor

*School of Pharmacy*

He, Guanglong

Assistant Professor

Singh, Reshmi L.

Assistant Professor

**College of Law**

Name

Rank

Glover, Mark

Assistant Professor

**FIRST-YEAR EXTENDED-TERM-TRACK REAPPOINTMENTS**

**1. Faculty**

It is recommended to the Trustees of the University of Wyoming that the reappointments for the following first-year extended-term-track faculty be approved as indicated. The reappointments are through the third year of employment, with the next reappointment review scheduled for Spring 2015.

**Academic Affairs**

Name

Rank

*American Heritage Center*

**Cline, Tyler G.**

Assistant Archivist

**University Libraries**

Name

Rank

*Coe Reference Department*

**Conerton, Kate L**

Assistant Librarian

## 2. Academic Professionals

It is recommended to the Trustees of the University of Wyoming that the reappointments for the following first-year extended-term-track academic professionals be approved as indicated. The reappointments are through the third year of employment, with the next reappointment review scheduled for Spring 2015.

### Academic Affairs

<u>Name</u>	<u>Rank</u>
<i>LeaRN</i>	
<b>Bray, David D.</b>	Assistant Lecturer
<i>School of Environment &amp; Natural Resources</i>	
<b>Carlson, Courtney Bethel</b>	Assistant Lecturer
<i>WyGIS</i>	
<b>Hodza, Paddington</b>	Assistant Research Scientist

### College of Agriculture and Natural Resources

<u>Name</u>	<u>Rank</u>
<i>Cooperative Extension Service</i>	
<b>Carter, Caleb</b>	Assistant Extension Educator
<b>Fleenor, Sara</b>	Assistant Extension Educator
<b>Kelley, Windy</b>	Assistant Extension Educator
<b>Vardiman, Rachel R.</b>	Assistant Extension Educator
<b>Zamudio, Amanda</b>	Assistant Extension Educator

### College of Arts & Sciences

<u>Name</u>	<u>Rank</u>
<i>Department of Art</i>	
<b>Russel, Bailey</b>	Assistant Lecturer
<i>Department of Geology &amp; Geophysics</i>	
<b>Carr, Bradley J.</b>	Senior Research Scientist
<i>Department of Physics &amp; Astronomy</i>	
<b>Barrans, Richard E.</b>	Assistant Lecturer
<i>Global and Area Studies Program</i>	
<b>Bjorkenwall, Ruth Olga</b>	Assistant Lecturer

### **College of Education**

Name

Rank

*Department of Elementary & Early Childhood Education*

**Geringer, Jennifer**

Assistant Lecturer

### **College of Health Sciences**

Name

Rank

*School of Pharmacy*

**Brown, Antoinette**

Assistant Lecturer

## **GLOSSARY OF PERSONNEL TERMS**

### **Academic Professional**

Person other than faculty, engaged primarily in activities that extend and support the teaching, research, extension, and service missions of the University. There are four categories of academic professional: Extension Educators, Lecturers, Research Scientists, Post-Doctoral Associates. Individuals belonging to any of the first three categories can hold extended-term-track appointments under certain conditions.

### **Academic-Year (AY) Appointments**

Appointments in which the regular period of employment includes the fall and spring semesters (nine months) of each year, with no accrual of vacation leave. Most faculty members and academic professionals hold AY appointments. AY employees typically receive their nine-month salaries and benefits spread out over the 12 months of each calendar year.

### **Adjunct Faculty**

An adjunct appointment is the appointment of an individual to an academic unit that recognizes special discipline-related expertise but carries no financial obligation per se. Adjunct appointments can include qualified non-academic personnel or faculty with other academic affiliations. Adjunct appointments carry no rights to remuneration, tenure, or employment-related privileges and are normally for three years, with renewal possible.

### **Archives Faculty**

This special faculty designation is reserved for archivists of the American Heritage Center. Archivists are responsible for acquiring original resource material to support academic research and teaching, organizing the material physically and intellectually, and teaching faculty, students and others to use these materials. There are three archivist ranks: Assistant Archivist, Associate Archivist, Archivist.

### **Assistant Professor**

Indicates tenure-track appointments of individuals who hold the terminal degree in their discipline. This is the usual entry-level faculty rank.

### **Associate Professor**

In addition to the qualifications of an Assistant Professor, Associate Professors have established a strong reputation in scholarship and teaching. Generally, faculty hired as Assistant Professors are promoted to the rank of Associate Professor at the time tenure is granted.

### **Clinical Faculty**

Clinical faculty appointments allow experts in health-related fields to contribute to the training of UW students in allied disciplines. Clinical appointments are for at most one year at a time and carry no rights to tenure or extended terms. Clinical faculty members may be salaried members of the UW faculty, in which case their reappointment is subject to annual performance reviews. There are also adjunct clinical faculty appointments, which typically involve health-care professionals whose normal employment is outside the university. Adjunct clinical appointments carry no financial commitment from the University.

### **Emeritus Faculty**

Tenured faculty who retire after long and distinguished service are eligible for emeritus status upon their retirement. The designation is honorary and carries no necessary commitment of space or remunerative employment. By analogy, extended-term academic professionals may be eligible for emeritus status upon retirement. (Emeritus=male, emerita=female, emeriti=plural)

### **Extended-Term Appointment**

Academic professionals who have successfully completed probationary terms (usually six years) may receive six-year appointments called extended-term appointments. The term also applies to certain librarians and archivists who hold faculty status. These employees are eligible for extended-term appointments after five-year probationary periods. Extended terms for these employees are five years in length. Academic professionals, librarians, and archivists who are in the probationary period are on the extended-term-track.



### **Extension Educator**

These academic professionals provide non-credit education to off-campus clientele through UW's Cooperative Extension Service. There are three ranks of Extension Educators: Assistant Extension Educator, Associate Extension Educator, Senior Extension Educator. All Extension Educators are in the College of Agriculture.

### **Faculty**

Members of the permanent faculty include tenured or tenure-track Assistant Professors, Associate Professors, and Professors. Also included are tenure-track individuals who hold the rank of Instructor while completing their terminal degrees. Librarians and archivists also hold faculty status. They are eligible for extended terms instead of tenure.

### **Fiscal-Year (FY) Appointments**

Appointments in which the regular period of employment is the entire calendar year, with accrual of annual vacation leave. Faculty members who hold administrative positions with summer responsibilities often have FY appointments for the duration of their administrative terms.

### **Full-Time Equivalent (FTE)**

A measure of the time commitment expected of an employee or a set of employees. For example, two full-time employees or four half-time employees constitute 2.0 FTE.

### **Instructor**

Tenure-track faculty member who does not yet hold the terminal degree in the appropriate field. UW requires verification of degrees in the form of official transcripts. UW does not grant tenure to faculty members who hold Instructor status at the time of the decision.

### **Leave of Absence Without Pay**

Academic and administrative personnel may request leaves without pay for periods normally not in excess of one year, for purposes consistent with the professional enhancement of the employee and the advancement of the University's stature.

### **Lecturer**

A category of academic professional involved largely in classroom instruction. Lecturers may be appointed to three ranks: Assistant Lecturer, Associate Lecturer, Senior Lecturer.

### **Library Faculty**

This faculty designation applies to employees of the University Libraries. There are three ranks of library faculty: Assistant Librarian, Associate Librarian, Librarian.

### **Part-Time Employee**

Any employee holding less than a full-time equivalent position (FTE less than 1.0).

### **Post-Doctoral Associate**

Post-Docs are doctorally qualified academic professionals seeking greater professional development and research investigation, before obtaining permanent employment. Post-Doctoral appointments are temporary.

### **Probationary Faculty**

This term refers to tenure-track faculty members who are working toward tenure and to academic professionals, library faculty, and archive faculty who are working toward extended-term contracts. The probationary term for academic professionals is generally six years, with yearly reviews and re-appointments. For librarians and archivists, it is five years. Faculty members who are on tenure-track appointments typically undergo the review for tenure in the sixth year of employment.

**Professional Development Leave**

Extended-term academic professionals who have completed six years of service at the University are eligible for professional development leave. The purpose of development leave is to enhance performance, to conduct special studies, or in some other way to enhance an individual's ability to contribute to the University. Development leaves can be granted with or without pay, are the prerogative of the academic unit in which the academic professional is located, and are generally similar to sabbatical leaves for faculty.

**Professor**

In addition to the qualification of an Associate Professor, "full" Professors have attained wide recognition in their professional fields for scholarship or other creative activity and have gained recognition for superior teaching and service.

**Research Professor**

Person with demonstrated superior capacity for research contributions, who is employed solely on external funds, and who holds a terminal degree. These appointments are made only at the Professor level and for not more than one year at a time. They are renewable.

**Research Scientist**

An academic professional whose primary responsibility is to conduct research. There are three ranks for Research Scientists: Assistant Research Scientist, Associate Research Scientist, Research Scientist.

**Review Year**

Year in which a reappointment review occurs for probationary employees. Normally, tenure-track faculty members undergo mandatory reappointment reviews in their first, second, and fourth years, with optional reviews in the third and fifth years. A review for the tenure decision occurs no later than the sixth year. An explanatory flow chart appears at the end of this glossary. In some cases employees start with credit toward a tenure or extended-term decision, based on their previous experience. In these cases the review year is the number of years of service at UW plus the number of years of credit.

**Sabbatical Leave**

Sabbatical leave may be granted to any tenured member of the faculty for the purposes of increasing professional competence and usefulness to the University. A minimum of six years service at the University must precede each period of sabbatical leave, although no right accrues automatically through lapse of time. Sabbatical leaves are normally granted for either a half year (full pay) or a full year (60% of salary). A faculty member who fails to return to the University after a sabbatical leave must repay the amount of compensation received from the University during the sabbatical. Faculty members may not use sabbatical leaves to pursue degrees.

**Temporary Appointment**

A short-term appointment without rights to tenure or extended term. Most temporary appointments are for one semester or one academic year.

**Tenure-Track Appointment**

Indicates a probationary faculty appointment prior to the award of tenure. Tenure-track positions generally require six years to tenure, but fewer years may be required based upon level of previous experience and accomplishments.

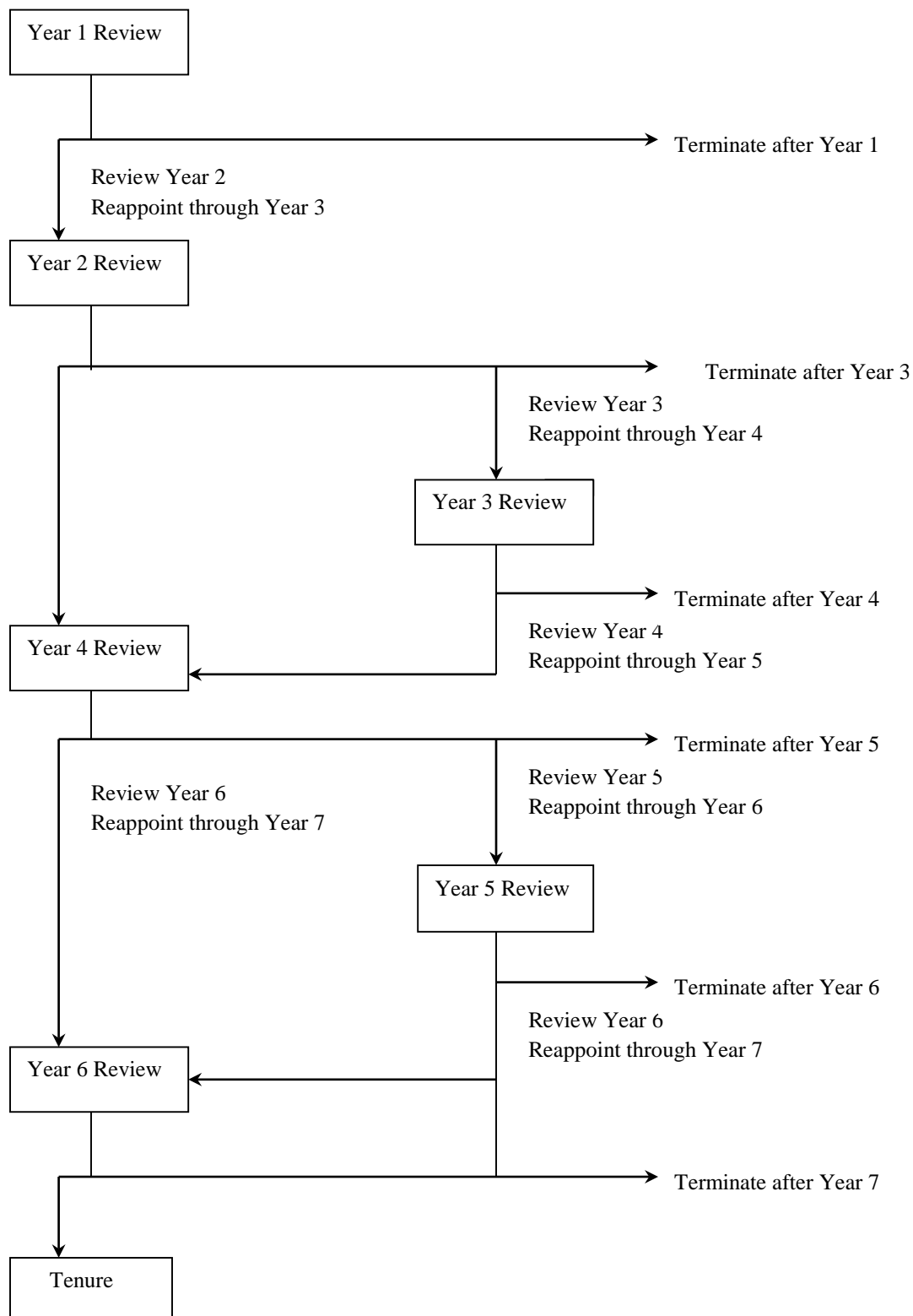
**Terminal Degree**

Typically the highest earned degree in a field of study. Examples include the Ph.D. (a variety of fields), the M.D. (medicine), the Ed.D. (education), M.F.A. (fine arts), M.Arch. (architecture), and J.D. (law).

**Visiting Appointment**

Indicates a non-permanent, non-tenure-track faculty appointment. Most visiting appointments are for one year.

## FLOW CHART FOR FACULTY REAPPOINTMENTS



## **B. Items for Information**

The changes in appointments and reappointments listed below are for the information of members of the Board of Trustees.

### **CHANGES IN APPOINTMENTS**

#### **1. Administrators**

##### **College of Health Sciences**

<u>Name</u>	<u>Rank</u>	<u>Salary</u>	<u>Beginning of Appointment</u>
<i>Dean's Office</i>			
<b>Benham-Deal, Tami B.</b>	Associate Dean	\$93,612/FY	10/14/2013

#### **2. Faculty**

##### **Academic Affairs**

<u>Name</u>	<u>Rank</u>	<u>Beginning of Appointment</u>
<i>Honors Program</i>		
<b>Aronstein, Susan L.</b>	Interim Director	01/15/2014
Susan Aronstein will serve as Interim Director of the Honors Program.		

### **3. Committee of the Whole- CONSENT AGENDA**

#### **Approval of Easements, Mai**

- a. Electric Easement to Powder River Energy, Crook Co. WY**
- b. Access Easement to FAE Holdings at Spanish Walk Apartments**
- c. Access Easement to City of Laramie for west Laramie water tank**

CHECK THE APPROPRIATE BOX(ES):

- ☐ Work Session
- ☐ Education Session
- ☐ Information Item
- ☒ Other                      Specify: Committee of the Whole (Consent Agenda)

#### **Electric Easement to Powder River Energy, Crook Co. WY**

##### **BACKGROUND AND POLICY CONTEXT OF ISSUE:**

Powder River Energy Corporation is a non-profit Touchstone Energy Cooperative that provides electrical service to northeastern Wyoming. Powder River Energy is completing proposed alignment of a 69kV high voltage distribution electrical line as part of a request for electrical service for ONEOK's High Voltage Power Line project.

As part of the project, Powder River Energy has requested to secure a 60 foot right of way easement across University land in Crook County, Wyoming. The University of Wyoming owns approximately 160 acres of pasture land located approximately two miles northeast of Sundance (see attached map). The real estate was bequeathed to the University as part of the Ella E. Schloredt Estate in 1979 and is leased for livestock grazing. Assets and income from the estate support a scholarship fund in the name of Ella E. Schloredt.

Powder River Energy is paying \$35.00 per rod (16.5 feet) for the length of the easement to landowners. The length of the easement is approximately 3,464 feet, which equals a payment of approximately \$7,350 to the University. The easement will also grant ingress and egress for maintenance of the line and equipment.

##### **PRIOR RELATED BOARD DISCUSSIONS/ACTIONS:**

None.

##### **WHY THIS ITEM IS BEFORE THE BOARD:**

It is the policy of the University of Wyoming that when a facility is no longer occupied, or upon request of the University administration, an evaluation of the subject facility or land shall be made to guide decisions regarding the retention or disposal of the facility and the land. The Vice President for Administration shall establish procedures, as appropriate, to determine necessary analyses to be used in the evaluation. Any evaluation regarding retention or disposal of real property shall be presented to the Trustees of the University of Wyoming for consideration.

UW Regulation 1-102, Attachment A: Policy for Retention or Disposal of Real Property.  
Approved by the Board of Trustees of the University of Wyoming July 25, 1998

Board approval is necessary for the University to grant the right of way easement for the electrical line across University land to Powder River Energy.

**ARGUMENTS IN SUPPORT:**

- The consideration offered of \$35 per rod is based on a 100 foot right of way and Powder River Energy has agreed to a 60 foot width.
- Powder River Energy has worked with the University to locate the easement to minimize impact to Lessee's grazing operations.
- The University and Lessee approve of the proposed easement location.
- The proposed alignment is adjacent to and follows the route of an existing 230kV power line across the property.
- The proposed easement location is near the western edge of the property and an existing road.

**ARGUMENTS AGAINST:**

None.

**ACTION REQUIRED AT THIS BOARD MEETING:**

The Board's approval to grant a right of way easement for an electrical line to Powder River Energy Corporation on University property in Crook County, Wyoming.

**PRESIDENT'S RECOMMENDATION:**

It is recommended that the Board of Trustees of the University of Wyoming approve the right of way easement to Powder River Energy Corporation.



## **Access Easement to FAE Holdings at Spanish Walk Apartments**

### **BACKGROUND AND POLICY CONTEXT OF ISSUE:**

FAE Holdings 421029R, LLC, a Utah Limited Liability Company, has requested an access easement to use an existing private roadway parcel owned by the University of Wyoming adjacent to and south of the University's Spanish Walk Apartments. It was recently determined by FAE Holdings that the parcel they are purchasing does not have legal access to use the roadway that provides access to the north side of their property.

The Spanish Walk Apartments are located near the intersection of Grand Avenue and 30<sup>th</sup> Street with an address of 205 S. 30<sup>th</sup> Street in Laramie, Wyoming. The private roadway parcel (Easement Area) was donated to the University in 2005. Acquisition of the parcel allowed the University to improve the parking area and provide adequate access for emergency vehicles to the buildings at Spanish Walk (see attached map). The private roadway parcel is paved and was established on the recorded plat of the Upland Heights Addition to the City of Laramie in 1973. Two prior access easements allow Burger King and Wendy's to use the roadway to gain access to their respective lots. The access easement area measures approximately 45 feet wide and 327 feet long (0.34 acres).

The access easement grants non-exclusive use and a share in the costs to maintain the roadway with the other users. The University will receive \$495 for the easement based on the length of the requested easement.

### **PRIOR RELATED BOARD DISCUSSIONS/ACTIONS:**

None.

### **WHY THIS ITEM IS BEFORE THE BOARD:**

It is the policy of the University of Wyoming that when a facility is no longer occupied, or upon request of the University administration, an evaluation of the subject facility or land shall be made to guide decisions regarding the retention or disposal of the facility and the land. The Vice President for Administration shall establish procedures, as appropriate, to determine necessary analyses to be used in the evaluation. Any evaluation regarding retention or disposal of real property shall be presented to the Trustees of the University of Wyoming for consideration.

UW Regulation 1-102, Attachment A: Policy for Retention or Disposal of Real Property. Approved by the Board of Trustees of the University of Wyoming July 25, 1998

Board approval is necessary for the University to grant the access easement across University land to FAE Holdings.

### **ARGUMENTS IN SUPPORT:**

- The proposed access easement is on an existing, paved roadway with little to no impact to the University's use of its property.
- Granting the easement provides FAE Holdings with legal access that was believed to have been previously granted for use of the existing roadway.



- Granting of the easement is consistent and compatible with the two prior access easements granted to Burger King and Wendy's.
- The access easement for use of the roadway provides an additional ingress/egress entry to the property with the potential to reduce traffic on Grand Avenue.
- Gives consideration to neighboring landowners needs for legal and desired access to their property.

**ARGUMENTS AGAINST:**

None.

**ACTION REQUIRED AT THIS BOARD MEETING:**

The Board's approval to grant an access easement on the private roadway parcel to FAE Holdings 421029R, LLC, on University property near the Spanish Walk Apartments.

**PRESIDENT'S RECOMMENDATION:**

It is recommended that the Board of Trustees of the University of Wyoming approve the access easement to FAE Holdings 421029R, LLC.



## **Access Easement to City of Laramie for west Laramie water tank**

### **BACKGROUND AND POLICY CONTEXT OF ISSUE:**

The Wyoming Army National Guard has completed construction of Field Maintenance Shop (FMS) 2 near Laramie Regional Airport and the City of Laramie water tank west of Laramie. The facility is located south of State Highway 130 and just east of Laramie Regional Airport. The University of Wyoming currently leases the land to the Wyoming Military Department with the understanding both parties would benefit from a future exchange of the FMS 2 site land for the Laramie Armory property at 2901 Armory Road.

Prior to completion of the FMS 2, the University of Wyoming, City of Laramie and National Guard used an existing private gravel road to access their respective facilities. The City of Laramie had an existing access easement to use the gravel road and utility easement for the water line from the City's water tank, both granted in 2000. As part of the National Guard's FMS 2 project, a new access off of State Highway 130 for a new paved road was granted by the Wyoming Department of Transportation (WYDOT). As a condition of WYDOT granting the new access permit, the old access for the gravel road was required to be removed and reclaimed. The new paved private access road follows the sewer and water utility lines to the City's water tank facilities and the FMS 2 facility.

A new access and utility easement(s) describing the new road and water/sewer lines need to be granted to the City of Laramie. The access and utility easement area measures 80 feet wide and 1,651.98 feet long (3.034 acres). The easement(s) will provide the City of Laramie access to use and maintain the roadway to access the City's water tank parcel and to operate, maintain and repair the lines in the easement area so long as the road and utility lines remain in use. A fee will not be charged for the easement(s) due to the existence of prior easements (requiring only a change in legal description) and the joint effort with the University, City of Laramie, and National Guard.

### **PRIOR RELATED BOARD DISCUSSIONS/ACTIONS:**

- September 1999 – City/Airport Water Line Easement
- January 2000 – Land Sale and Easement to the City of Laramie

### **WHY THIS ITEM IS BEFORE THE BOARD:**

It is the policy of the University of Wyoming that when a facility is no longer occupied, or upon request of the University administration, an evaluation of the subject facility or land shall be made to guide decisions regarding the retention or disposal of the facility and the land. The Vice President for Administration shall establish procedures, as appropriate, to determine necessary analyses to be used in the evaluation. Any evaluation regarding retention or disposal of real property shall be presented to the Trustees of the University of Wyoming for consideration. UW Regulation 1-102, Attachment A: Policy for Retention or Disposal of Real Property. Approved by the Board of Trustees of the University of Wyoming July 25, 1998

Board approval is necessary for the University to grant the access and utility easements across University land to the City of Laramie.

**ARGUMENTS IN SUPPORT:**

- The proposed access and utility easements follow the paved roadway with little to no impact to the University or National Guard's use of their facilities.
- Co-location of the road and the utility lines (under and adjacent to the road) create a desirable utility corridor for services to the facilities.
- The new easements only modify the description of prior access and utility easements granted to the City of Laramie.
- University, City, and National Guard personnel have worked collaboratively on access and utility locations.
- The easements continue the collaborative partnership between the City of Laramie and UW.

**ARGUMENTS AGAINST:**

None.

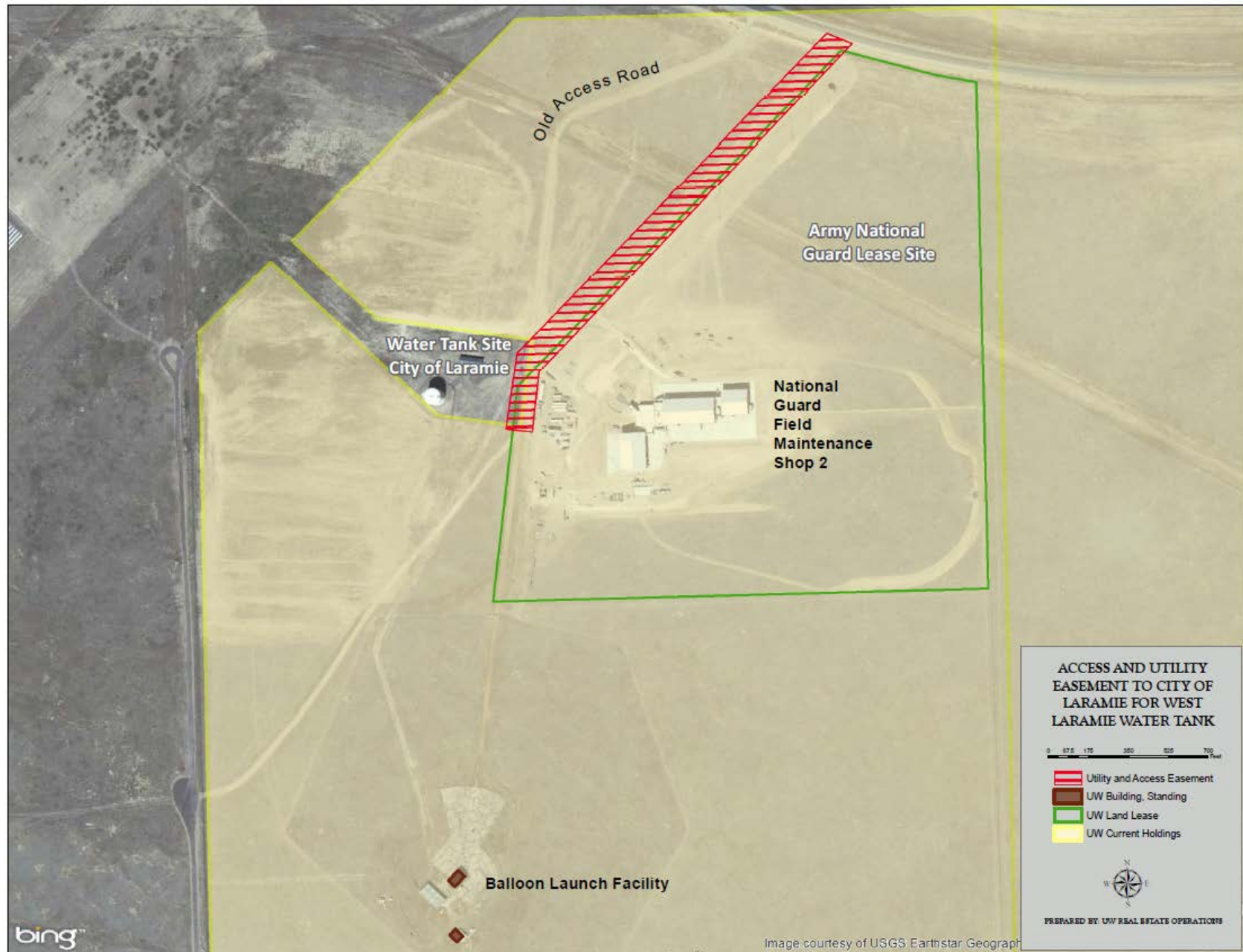
**ACTION REQUIRED AT THIS BOARD MEETING:**

The Board's approval to grant the access and utility easements to the City of Laramie on University property for the west Laramie water tank.

**PRESIDENT'S RECOMMENDATION:**

It is recommended that the Board of Trustees of the University of Wyoming approve the access and utility easements to the City of Laramie.





**4. Committee of the Whole- CONSENT AGENDA**  
**Approval of Tuition Policy**, Mai

CHECK THE APPROPRIATE BOX(ES):

- ☐ Work Session
- ☐ Education Session
- ☐ Information Item
- ☒ Other                      Specify: Committee of the Whole (Consent Agenda)

**5. Committee of the Whole- CONSENT AGENDA**  
**Approval of Fees (Fee Book)**, Mai

CHECK THE APPROPRIATE BOX(ES):

- ☐ Work Session
- ☐ Education Session
- ☐ Information Item
- ☒ Other                      Specify: Committee of the Whole (Consent Agenda)

**6. Committee of the Whole- CONSENT AGENDA**  
**Approval of Salary Distribution Policy**, Mai

CHECK THE APPROPRIATE BOX(ES):

- ☒ Work Session
- ☐ Education Session
- ☐ Information Item
- ☒ Other                      Specify: Committee of the Whole (Consent Agenda)

**7. Committee of the Whole- CONSENT AGENDA**  
**Approval of State Matching Funds, Blalock**

CHECK THE APPROPRIATE BOX(ES):

- ☒ Work Session
- ☐ Education Session
- ☐ Information Item
- ☒ Other                      Specify: Committee of the Whole (Consent Agenda)

**BACKGROUND AND POLICY CONTEXT OF ISSUE:**

The following commitments meet the requirements for the Wyoming State Match.

**STATE MATCHING FUNDS FOR ATHLETICS**

This is to request approval for Wyoming Legislative Matching Funds for a pledge of \$3,000,000.00 from Maurice W. Brown for the Arena Auditorium Renovation and naming of the playing surface – “Maury Brown Court”.

Maurice W. Brown attended the University.

This is to request approval for Wyoming Legislative Matching Funds for a pledge of \$50,000.00 from William “Bill” and Victoria Scarlett for the Arena Auditorium Renovation.

Bill Scarlett graduated with a Bachelor of Science in Business Administration from the College of Business in 1992. Victoria Scarlett is a friend of the University.

**STATE MATCHING FUNDS FOR ACADEMIC FACILITIES**

This is to request approval for Wyoming Legislative Matching Funds for a pledge of \$2,000,000.00 from Halliburton Foundation Inc. for the School of Energy Resources: High Bay Research Facility Project.

Halliburton Foundation Inc. is an entity.

## **8. Committee of the Whole- CONSENT AGENDA**

### **Approval of Masters Degree in Architectural Engineering, Gasem**

CHECK THE APPROPRIATE BOX(ES):

- ☒ Work Session
- ☐ Education Session
- ☐ Information Item
- ☒ Other                      Specify: Committee of the Whole (Consent Agenda)

#### **BACKGROUND AND POLICY CONTEXT OF ISSUE:**

The College of Engineering and Applied Sciences has requested a new Master of Science in Architectural Engineering (MS-ARE). This proposed degree will parallel the existing Master of Science Degree in Civil Engineering (MS-CE) that the department currently offers. The primary purpose is to increase the ability to recruit graduate students and fund research activities which will help to address the Engineering Initiative and the Governor's Task Force.

There are currently only 18 accredited undergraduate Architectural Engineering programs in the United States. Of these 18, 9 are of the MS-ARE variety. By having this degree program, this will allow faculty to work in areas specific to Architectural Engineering, where the MS-CE degree would be a poor fit. Additionally this degree would help prevent the loss of some of the better Architectural Engineering undergraduate students who leave to pursue graduate degrees in Architectural Engineering at other institutions.

This Graduate Program request has been reviewed and approved by the department head and Dean of the College of Engineering, the Graduate Council, Academic Affairs with input from the Academic Deans' Council, and the President.

#### **PRIOR RELATED BOARD DISCUSSIONS/ACTIONS:**

None.

#### **WHY THIS ITEM IS BEFORE THE BOARD:**

The Board of Trustees are required to approve Program name changes.

#### **ARGUMENTS IN SUPPORT:**

The participating faculty, the College dean, the Academic Deans' Council, and the Office of Academic Affairs carefully considered the proposal and support the plan.

#### **ARGUMENTS AGAINST:**

None.

#### **ACTION REQUIRED AT THIS MEETING:**

We seek Board approval of this program name change. It appears on the consent agenda in this month's report

#### **PRESIDENT'S RECOMMENDATION:**

President Dick McGinity recommends approval.



**9. Committee of the Whole- CONSENT AGENDA**  
**Approval of State Matching Funds Plan**, Mai/Blalock

CHECK THE APPROPRIATE BOX(ES):

- ☒ Work Session
- ☐ Education Session
- ☐ Information Item
- ☒ Other                      Specify: Committee of the Whole (Consent Agenda)

**1. INFORMATION ONLY ITEM**

**Presidential Directive**, McGinity/Mai

CHECK THE APPROPRIATE BOX(ES):

- ☐ Work Session
- ☐ Education Session
- ☒ Information Item
- ☐ Other                Specify:

Below please see directive and attached flow chart. These documents can also be found on the University of Wyoming Office of General Counsel website.

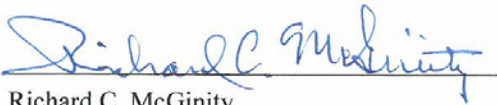
**PRESIDENTIAL DIRECTIVE  
THE UNIVERSITY OF WYOMING  
6-2014-1**

**February 24, 2014**

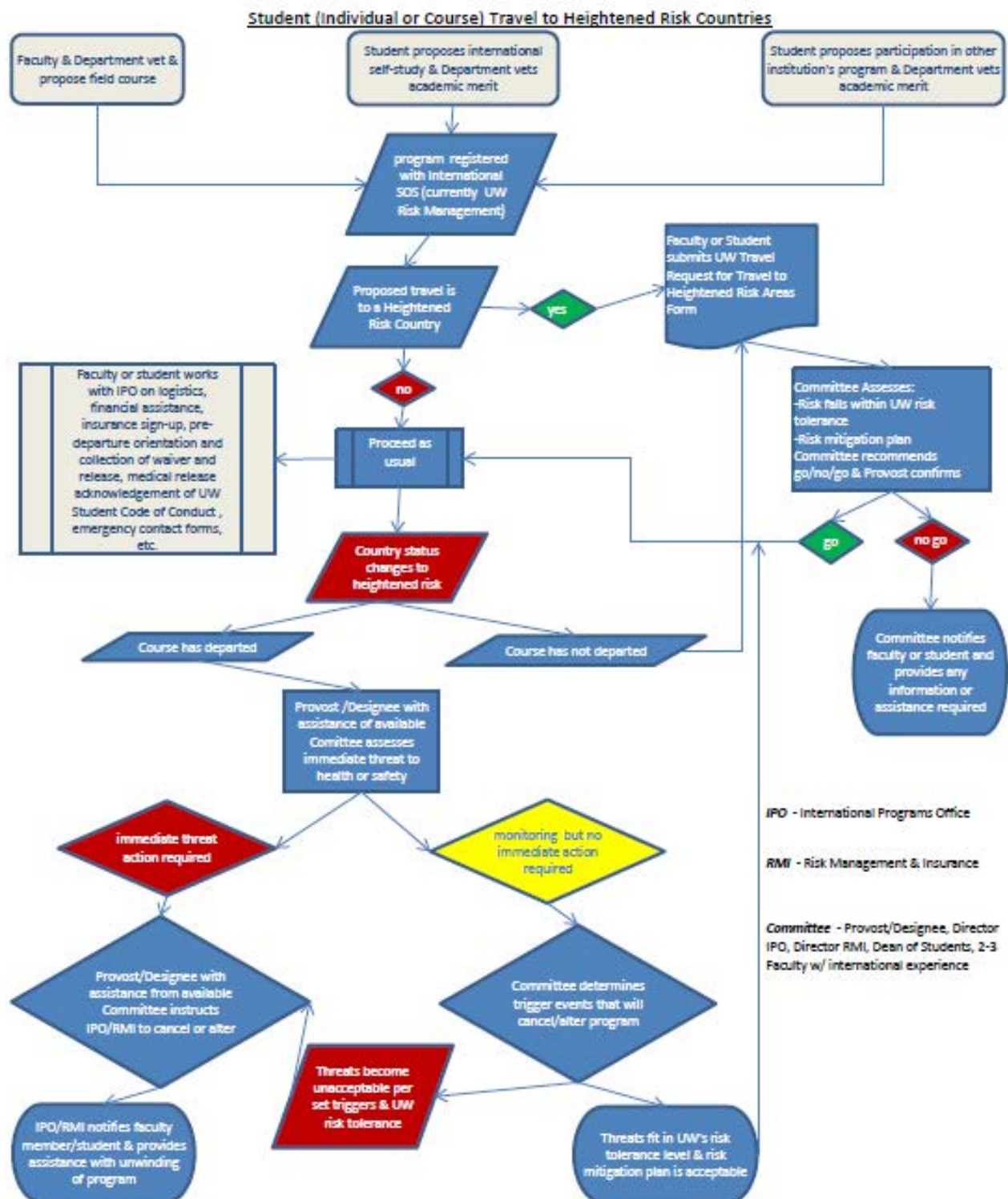
**SUBJECT: International Travel to Heightened Risk Areas**

1. **General Information.** The University must provide knowledge, skills, and opportunities for students, faculty and staff to lead and excel in a world that is increasingly globally connected and, as such, the University will continue its efforts in the area of internationalization. As we do so, we must acknowledge the risks associated with international opportunities and do everything we can to ensure the safety of our students, faculty, staff, and constituents.
2. **Purpose.** The directives below are intended to ensure the University considers security and safety as it pursues critical internationalization.
3. **University International Travel Review Committee.** This committee is hereby created and shall be made up of the Vice President for Academic Affairs or his/her designee, Director of International Programs, Director of Risk Management and Insurance, and two faculty members who are involved in internationalization who will be appointed by the Vice President for Academic Affairs for a term of two years, or such other term as shall be established at the time of appointment. Keeping in mind the importance of balancing critical internationalization and global experiences with the safety and security of individuals, and keeping in mind the need to minimize administrative burden in achieving these objectives, the responsibilities of the committee shall be as follows:
  - a. Define areas (cities, regions, countries, etc.) of heightened risk for international travel;
  - b. Establish University policies and procedures related to international travel to heightened risk areas including, but not necessarily limited to, a process or processes for reviewing and approving University-related international travel to heightened risk countries; and,
  - c. Maintain a plan for monitoring and handling events occurring in international locations during University-related international travel.
4. **International Programs and Risk Management and Insurance – Responsibilities.** The International Programs Office and the Risk Management and Insurance Department shall provide administrative support to the committee. All policies and procedures developed by the committee shall be published on the International Programs Office and the Risk Management and Insurance Department's websites, and shall be made readily available in other formats as necessary.
5. **University Students, Faculty, Staff, and Constituents – Responsibilities.** Each person engaged in internationalization is responsible for understanding the policies and procedures developed for University-related international travel and for complying with these policies and procedures.

Approved

  
Richard C. McGinity  
University President

FEB 24, 2014  
Date



## 2. INFORMATION ONLY ITEM

### Progress Report/Change Orders, Mai

CHECK THE APPROPRIATE BOX(ES):

- ☐ Work Session  
☐ Education Session  
☒ Information Item  
☐ Other Specify:

### **Capital Construction Progress Report as of March 4, 2014**

The following is an accounting of the progress and activity of construction and design since the last Trustees meeting. Also reported are approved change orders.

## PROJECTS IN CONSTRUCTION

### 1. Energy Innovation Center

Construction Manager at Risk	G E Johnson Construction Company
	Jackson, WY
Guaranteed Maximum Price	\$18,926,514
Contract Substantial Completion Date	June 4, 2012
Extended	June 7, 2013

(In Thousands)	Total	Admin	Constr	Design	Tech	FF&E	Misc	Cntngcy
Budget	25,400	686	19,348	1,855	1,070	1,007	507	927
Expended	28,730	672	22,705	1,855	1,070	994	507	927
Obligated	13	0	0	0	0	13	0	0
Other Funding	3,357	0	3,357	0	0	0	0	0
Un-obligated	14	14	0	0	0	0	0	0

Remarks Contractor is completing minor warranty work. Drilling Simulation equipment will be installed in the lab on the second floor in March, 2014.

### 2. White Hall Renovation

Contractor	Sampson Construction Company, Inc.
	Cheyenne, WY
Bid Price	\$10,355,500
Contract Substantial Completion Date	Various phases – final phase August 7, 2015

(In Thousands)	Total	Admin	Constr	Design	FF&E	Misc	Cntngcy
Budget	13,935	789	11,185	553	440	311	657
Expended	12,860	480	11,051	553	390	311	75
Obligated	571	0	489	0	0	0	82
Other Funding	355	0	355	0	0	0	0
Un-obligated	859	309	0	0	50	0	500

Remarks Phase I is in warranty. Alternate for replacing half of McIntire windows will begin summer, 2014 and the other half will be installed summer, 2015.

### 3. Half Acre Gymnasium Addition and Renovation

Contractor Groathouse Construction, Inc.  
Laramie, WY  
Guaranteed Maximum Price \$19,800,000  
Contract Substantial Completion Date January 15, 2015

(In Thousands)	Total	Admin	Constr	Design	Tech	FF&E	Misc	Cntngcy
Budget	26,919	912	19,800	2,922	974	974	637	700
Expended	7,143	457	5,423	1,244	0	4	15	0
Obligated	16,673	0	14,377	1,476	0	91	29	700
Un-obligated	3,103	455	0	202	974	879	593	0

Remarks Structural steel erection, though somewhat delayed by inclement weather, continues toward a mid-March "topping-out" milestone. Masonry construction is progressing. Exterior building enclosure and interior framing will follow structural steel erection. Utility work in support of the project is being conducted over Spring Break and site improvements will commence at the close of the Spring Semester.

### 4. Buchanan Center for the Performing Arts

Contractor Sampson Construction Company, Inc.  
Cheyenne, WY  
Guaranteed Maximum Price \$25,700,000  
Contract Substantial Completion Date October 31, 2014

(In Thousands)	Total	Admin	Constr	Design	Tech	FF&E	Misc	Cntngcy
Budget	35,000	960	25,778	3,545	1,208	2,450	500	559
Expended	10,353	654	6,969	2,727	0	3	0	0
Obligated	22,212	142	20,057	490	500	464	0	559
Other Funding	1,248	0	1,248	0	0	0	0	0
Un-obligated	3,683	164	0	328	708	1,983	500	0

**Remarks** Footing excavation, rebar placement and pouring continue, along with foundation walls. Grade beam exaction and forming will be complete this week. Backfill on the north is complete and continuing on the east side. Steel erection is ongoing on the east side and middle area of addition. Exterior framing has begun on the north. Concrete slabs on grade and on metal decking are ongoing on the north side of the building. Work on the existing practice rooms is ongoing.

## 5. **Outreach, Research and Extension Center at Sheridan (ORECS)**

Contractor	Fletcher Construction Company Sheridan, WY
Bid Price	\$1,581,000
Contract Substantial Completion Date	August 13, 2013

(In Thousands)	Total	Admin	Constr	Design	Tech	FF&E	Watt Bldg	Cntngcy
Budget	5,600	95	1,818	211	75	80	3,201	120
Expended	5,595	34	1,968	209	19	56	3,201	108
Obligated	27	0	0	2	25	0	0	0
Addtl Funds	150	0	150	0	0	0	0	0
Un-obligated	128	61	0	0	31	24	0	12

**Remarks** Contractor is completing the final punch list on building and greenhouse along with some minor upgrades for the users.

## 6. **Arena Auditorium Renovation, Phase I**

Contractor	Haselden Wyoming Constructors Casper, WY
Guaranteed Maximum Price	\$7,099,599
Contract Substantial Completion Date	September 29, 2014

(In Thousands)	Total	Admin	Constr	Design	Tech	FF&E	Misc	Cntngcy
Budget	12,850	415	10,292	1,065	250	427	40	361
Expended	875	168	0	707	0	0	0	0
Obligated	9,944	2	9,574	358	0	0	0	10
Un-obligated	2,031	245	718	0	250	427	40	351

**Remarks** Bids were received in early March. Contractor is reviewing the bids and will begin awarding contracts the week of March 3<sup>rd</sup>. A separate bid package for a video production room and another for furniture, fixtures and equipment are being prepared. Construction will begin March 10, 2014.

## CHANGE ORDERS

### 1. Energy Innovation Center

Item 1 Install Haskris Chiller and provide connections	Add:	7,840
Item 2 Add DMC-DVI card to accommodate Mech Dyne	Add:	1,771
Item 3 Add functionality in Auditorium	Add:	11,301
Item 4 Provide Securitron electric strike on door	Add:	515
Total Change Order No 55	Add:	21,427

### Statement of Contract Amount

Original Contract	\$18,926,514
Change Orders 1 – 55	+ 5,756,475
Adjusted Contract	\$24,682,989
Additional 368 days	

### 2. White Hall Renovation

Item 1 Replace existing roof drain	Add:	1,383
Item 2 Credit for not supplying key cabinet	Deduct:	980
Item 3 Furnish and install wood doors	Add:	4,498
Item 4 Modification for toilet, bath and laundry accessories	Deduct:	925
Item 5 Install card reader pedestal	Add:	655
Item 6 Modifications to windows in RA rooms	Add:	6,494
Item 7 Modifications to roofing	Add:	2,772
Item 8 ADA modifications for doors	Add:	400
Item 9 Modifications to doors	Deduct:	563
Item 10 Install card reader in laundry	Add:	884
Item 11 Modification to new exterior wall	Add:	585
Item 12 Modifications to window heads	Add:	4,163
Item 13 Modifications to stair landings	Add:	503
Item 14 Provide power for commons area irrigation	Add:	1,288
Item 15 Electrician on site during student move in	Add:	884
Item 16 Modifications to door strike	Add:	292
Item 17 Power to west doors for card reader and operator	Add:	1,432
Item 18 Modifications to ceilings	Add:	1,593
Item 19 Modifications in restroom showers	Add:	5,103
Item 20 Tunnel Repairs	Add:	13,094
Item 21 Additional painting repairs	Add:	637
Item 22 Relocate ceiling fixtures	Add:	293
Total Change Order No 19	Add:	44,485



**Statement of Contract Amount**

Original Contract	\$10,355,500
Change Order 1-19	<u>+ 1,226,681</u>
Adjusted Contract	\$11,582,181

**3. Half Acre Gymnasium Addition and Renovation**

Item 1 CMAR increase for time extension	Add: 97,234
Item 2 Reconciliation of GMP against actual subcontract costs	<u>Add: 1,371,478</u>
Total Change Order No 2	Add: 1,468,712

Item 1 Additional isolated ground outlets	Add: 11,349
Item 2 Additional asbestos abatement in north basement	<u>Add: 29,809</u>
Total Change Order No 3	Add: 41,158

**Statement of Contract Amount**

Original Contract	\$19,800,000
Change Orders 3	<u>1,729,582</u>
Adjusted Contract	\$21,529,582

**4. Buchanan Center for the Performing Arts**

Item 1 Paint rooms 223 & 233	Add: 2,693
Item 2 Temporary emergency generator	Add: 4,371
Item 3 Preconstruction shelving installation	Add: 4,203
Item 4 Furnish and install door mockups	Add: 11,348
Item 5 Fire damper	Add: 9,961
Item 6 ADA West vestibule	Add: 12,908
Item 7 Reinstall drain tile	Add: 5,473
Item 8 Add prismatic skylights	Add: 10,771
Item 9 Reroute existing underground duct work	Add: 31,268
Item 10 Add instrument storage cabinets	Add: 135,006
Item 11 Add new roof areas	Add: 111,722
Item 12 Furnish and install gas line	Add: 2,935
Item 13 Emergency generator	Add: 17,860
Item 14 Paint walls 232, 22027, 2027A	Add: 3,147
Item 15 Bungalow parking lot extras	Add: 5,983
Item 16 Add curtains	Add: 134,214
Item 17 Fireproofing the deck	Add: 87,400
Item 18 Plan reproductions/printing costs	Add: 12,693
Item 19 Building Permit costs	<u>Add: 70,488</u>
Total Change Order No 5	Add: 674,444

Item 1 Add intumescent fireproofing	Add:	14,007
Item 2 Audio Visual	Add:	708,930
Item 3 Furnish and install hand dryers	Add:	13,259
Item 4 Upgrade electrical panels and transformers	Add:	16,059
Item 5 Modifications to walk off mats	Add:	8,533
Item 6 Modifications to smoke and fire vents	Add:	21,482
Item 7 Reroof two areas of existing building	Add:	105,791
Total Change Order No 6	Add:	888,061

**Statement of Contract Amount**

Original Contract	\$25,700,000
Change Orders 1-6	<u>2,804,855</u>
Adjusted Contract	\$28,504,855

**5. Outreach, Research and Extension Center at Sheridan (ORECS)**

Item 1 Replace doors	Add:	4,108
Item 2 Additional electrical work	Add:	8,416
Item 3 Additional ductwork for sound isolation	Add:	1,303
Item 4 Inter duct	Add:	10,559
Item 5 Install owner provided fume hood/cabinets	Add:	2,418
Item 6 Hookup appliances	Add:	866
Item 7 Mailbox	Add:	1,799
Item 8 Concrete pad for mailbox	Add:	486
Item 9 Panels/equipment for phone/data systems	Add:	928
Item 10 Additional receptacles	Add:	267
Item 11 Emergency power for headhouse/greenhouse	Add:	15,578
Item 12 Provide deeper sink	Add:	239
Item 13 Additional fire extinguisher for kitchen	Add:	106
Item 14 Additional data/move furniture	Add:	2,333
Item 15 Deeper sinks in dry lab	Add:	<u>1,051</u>
Total Change Order No 7	Add:	50,457

**Statement of Contract Amount**

Original Contract	\$1,581,000
Change Orders 1-7	<u>519,639</u>
Adjusted Contract	\$2,100,639

**6. Arena Auditorium Renovation Phase I**

**Statement of Contract Amount**

Original Contract	\$7,099,599
Change Orders	<u>0</u>
Adjusted Contract	\$7,099,599

**3. INFORMATION ONLY ITEM**  
**Development Report, Blalock**

CHECK THE APPROPRIATE BOX(ES):

- ☐ Work Session
- ☐ Education Session
- ☒ Information Item
- ☐ Other                      Specify:

**BACKGROUND AND POLICY CONTEXT OF ISSUE:**

The UW Foundation has agreed to report on donor giving to the University of Wyoming Board of Trustees.

**WHY THIS ITEM IS BEFORE THE BOARD:**

This report is before the board to advise them of the most current giving totals.

**COMMENTS:**

There are two spreadsheets within the Monthly Giving Report. The first includes all gifts, while the second focuses on annual fund gifts. Both tables are broken down by the unit receiving the gifts.

University of Wyoming, Foundation  
FY 2014 Monthly Giving Report through February  
All Gifts

FUND	Current Month Gifts Received		FY 2014 to date							STATE MATCHING	FY 2013 Commitments YTD	
			Cash & Cash equivalent			New Commitments YTD						
	DONORS	GIFTS	DONORS	OUTRIGHT	GIK	PLEDGE PMTS	NEW PLEDGES	PLANNED GIFTS	TOTAL			
AGRIC	78	\$32,405	831	\$728,537	\$1	(\$177,000)	\$30,000	\$1,284,875	\$1,866,413	\$0	714	\$1,252,732
AHC	7	\$565	271	\$79,021	\$55,925	(\$4,500)	\$0	\$0	\$130,446	\$0	327	\$305,668
ALUMNI	361	\$23,500	2823	\$197,287	\$0	(\$400)	\$0	\$0	\$196,887	\$0	2682	\$158,732
A & S	86	\$133,441	1791	\$1,117,816	\$248	(\$87,557)	\$462,650	\$936,000	\$2,429,157	\$0	1837	\$2,950,096
ATHLETICS	1093	\$458,044	4366	\$4,425,134	\$319,599	(\$1,502,178)	\$7,068,000	\$200,000	\$10,510,554	\$7,067,000	4563	\$4,110,654
BUSINESS	35	\$28,385	749	\$509,005	\$0	(\$222,150)	\$75,000	\$0	\$361,855	\$0	690	\$321,181
EDUCATION	33	\$60,431	640	\$346,173	\$0	(\$45,000)	\$0	\$0	\$301,173	\$0	531	\$1,275,923
ENERGY	2	\$254,000	36	\$2,716,364	\$0	(\$2,703,333)	\$2,000,000	\$0	\$2,013,030	\$2,000,000	41	\$5,762,467
ENGINEERING	47	\$47,159	1045	\$544,891	\$0	(\$110,940)	\$30,000	\$4,020,000	\$4,483,951	\$25,000	1003	\$1,520,229
IENR	12	\$4,230	108	\$615,165	\$0	\$0	\$0	\$0	\$615,165	\$0	64	\$359,425
HEALTH SCI	27	\$33,189	547	\$465,926	\$0	(\$254,000)	\$5,000	\$0	\$216,926	\$0	692	\$448,067
LAW	12	\$550	254	\$168,034	\$0	(\$72,500)	\$61,000	\$0	\$156,534	\$0	417	\$978,851
LIBRARY	6	\$745	167	\$43,600	\$0	\$0	\$0	\$0	\$43,600	\$0	168	\$175,995
OUTREACH	1390	\$93,215	5791	\$676,281	\$0	(\$10,955)	\$0	\$0	\$665,325	\$0	6241	\$648,092
STU AFFRS	11	\$2,500	601	\$151,826	\$0	\$0	\$0	\$0	\$151,826	\$0	532	\$90,855
UW ART MUS	14	\$2,750	603	\$191,061	\$69,647	(\$32,250)	\$0	\$0	\$228,458	\$0	626	\$3,108,481
UNIV. FUND	20	\$4,963	496	\$66,426	\$0	\$0	\$0	\$0	\$66,426	\$0	612	\$79,128
OTHER GIFTS NOT YET BOOKED	18	\$474,047	368	\$4,300,684	\$0	(\$2,554,883)	\$1,281,830	\$1,350,000	\$4,377,632	\$0	598	\$20,891,619
TOTAL	3,088	\$1,654,118	17,679	\$17,343,231	\$445,420	(\$7,777,647)	\$11,013,480	\$7,790,875	\$28,815,360	\$9,092,000	29,543	\$44,438,196
Funds Not Deposited at Foundation      \$2,774,871 Foundation Cash In      \$14,568,561												
**Total Donors does reflect Column totals. Donors may give to more than one unit/division.												

University of Wyoming, Foundation  
FY 2014 Monthly Giving Report through February  
Annual Gifts

FUND	FY 2014 GOALS	Current Month		FY 2014 to date		FY 2013 to same date		FY 2014 AF % of Goal
		DONORS	AMOUNT	DONORS	TOTAL	DONORS	TOTAL	
AGRIC	\$ 100,000	19	\$7,740	654	\$88,308	560	\$81,376	88.31%
AHC	\$ 47,000	7	\$565	249	\$44,267	299	\$45,981	94.19%
ALUMNI	\$ 10,000	312	\$15,175	2619	\$170,352	2524	\$135,717	1703.52%
A & S	\$ 407,000	50	\$37,240	1523	\$349,960	1578	\$308,529	85.99%
ATHLETICS	\$ 2,800,000	1054	\$317,168	4059	\$1,627,767	4342	\$1,491,167	58.13%
BUSINESS	\$ 150,000	20	\$6,472	601	\$110,525	577	\$95,213	73.68%
EDUCATION	\$ 71,000	22	\$2,972	535	\$46,612	499	\$47,213	65.65%
ENERGY	\$ 5,000	0	\$0	26	\$8,354	30	\$12,467	167.08%
ENGINEERING	\$ 300,000	32	\$9,402	912	\$187,409	862	\$197,449	62.47%
IENR	\$ 58,000	12	\$4,230	94	\$42,965	50	\$17,425	74.08%
HEALTH SCI	\$ 131,000	18	\$3,085	496	\$70,865	494	\$70,079	54.10%
LAW	\$ 73,000	11	\$525	188	\$37,170	278	\$75,300	50.92%
LIBRARY	\$ 31,000	4	\$350	153	\$27,123	142	\$24,675	87.49%
OUTREACH	\$ 900,000	1390	\$93,215	5782	\$640,726	6223	\$599,639	71.19%
STU AFFRS	\$ 35,000	10	\$1,750	319	\$50,625	520	\$28,155	144.64%
UW ART MUS	\$ 49,000	11	\$2,050	144	\$20,118	209	\$34,413	41.06%
UNIV. FUND	\$ 93,000	20	\$4,983	496	\$66,426	612	\$79,128	71.43%
OTHER GIFTS NOT YET BOOKED	\$ 40,000	10	\$458	207	\$34,544	220	\$58,496	86.36%
TOTAL	\$5,300,000	2,893	\$507,360	16,183	\$3,624,117	17,125	\$3,402,424	68.38%

*\*\*Total Dnrs do not reflect Column totals. Donors may give to more than one unit/division.*