

Board of Trustees Construction Update May 8, 2014

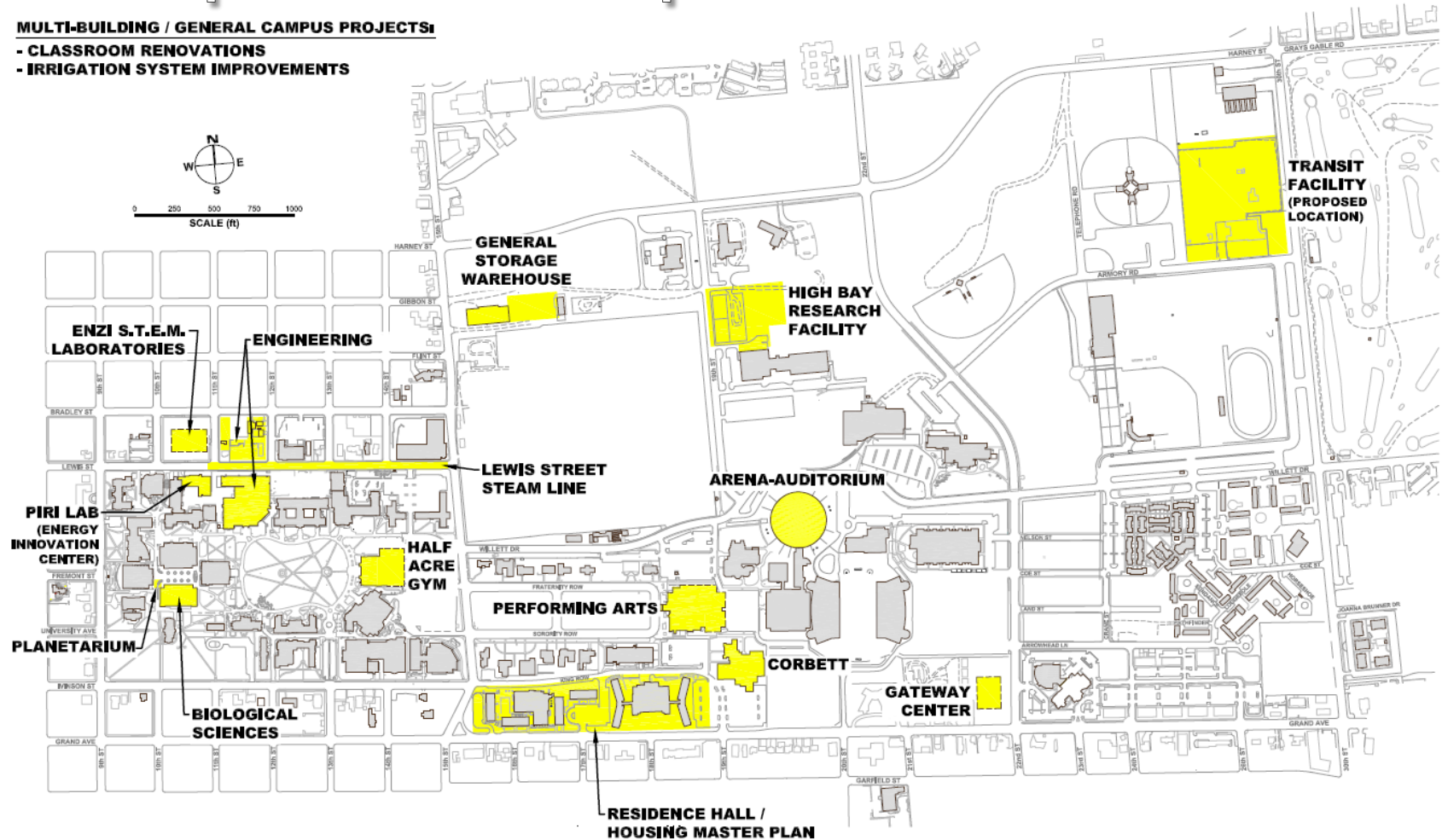


UNIVERSITY OF WYOMING

Campus Development

MULTI-BUILDING / GENERAL CAMPUS PROJECTS:

- CLASSROOM RENOVATIONS
- IRRIGATION SYSTEM IMPROVEMENTS



Enzi STEM Facility



Construction Start: Dec. 2013

Construction Complete: May 2015

Square Ft. New: 99,600

Total Budget: \$50.0M AML Funds

Occupants: Life Science, Chemistry, Mathematics, Engineering, wet and dry labs, computational labs and lab support for lower division laboratory-based courses.

Special Note: Construction administered by State Construction Office and LEED Silver equivalent

Arena-Auditorium Renovation, Phase 1

Construction Start: March 2014

Construction Complete: Oct. 2014

Total Budget: \$12.85M

Features: Interior renovation of UW's practice and competition facilities. Enhancements will give basketball two state-of-the-art locker rooms, a sports medicine area, an expanded weight training area and rooms for film and meetings. The playing floor will also be reconfigured to accommodate two simultaneous practice sessions. New seats closer to the floor, new HD video and ribbon boards and a new donor area with priority seating will be included.



Half Acre Gym Renovation & Expansion

Construction Start: Summer 2013

Construction Complete: Jan. 2015

Square Ft. New: 99,308

Square Ft. Renovated: 40,530

Total Budget: \$27.0M

Occupants: UW Recreation, Wellness,
Kinesiology, Theatre & Dance

Special Note: LEED Silver certification
minimum; Gold targeted.



Performing Arts Center

Construction Start: June 2013

Construction Completion: Jan. 2015

Square Ft. New: 66,256

Square Ft. Renovated: 113,795

Total Budget: \$35M

Features: The project will include a thrust stage theatre, dance studio, orchestra rehearsal room, recital hall, choral rehearsal space, and faculty offices.

Special Note: LEED Silver equivalent



UNIVERSITY OF WYOMING

Planetarium Upgrades

Construction Start: June 2014

Construction Completion: Sept. 2014

Total Budget: \$650,000

Features: Comprehensive renovation of existing space and extensive technological upgrades.



Marian H. Rochelle Gateway Center



Construction Start: Dec. 2013

Construction Complete: October 2014

Square Ft. New: 60,000

Total Budget: \$25M

Occupants: UW Foundation, the Alumni Association, the Center for Advising and Career Services and Admissions.



UNIVERSITY OF WYOMING

Biological Sciences HVAC Modifications



Construction Start: Spring 2012

Construction Complete: Fall 2013

Square Ft. New: NA

Square Ft. Renovated: 205,350

Total Budget: \$9.5M

Occupants: Psychology,
Zoology/Physiology

High Bay Research Facility

Construction Start: 2015

Total Budget: \$25.6M

Construction Complete: 2016

Occupants: School of Energy Resources;
College of Engineering & Applied Science

Special Note: LEED Silver equivalency
anticipated



Stephanie Bower, Architectural Illustration

College of Engineering Building Expansion & Renovation

Construction Start: 2015

Construction Complete: 2017

Occupants: School of Engineering and Applied Science

In response to a request from the Wyoming Governor's Energy, Engineering, STEM Integration Task Force, Mead proposes an \$8 million ongoing increase -- which would be combined with the reallocation of \$9.2 million in internal UW dollars -- to make programmatic improvements in the College of Engineering and Applied Science. In addition, the governor recommends the release of \$7.9 million previously appropriated for planning and design of a major project to expand and renovate the Engineering Building; \$10.5 million for a new Energy Engineering Research Facility, to be matched by private dollars; and \$5 million for an endowed professorship in petroleum engineering, also to be matched with private contributions.

Special Note: LEED Silver equivalency or certification anticipated



Corbett Pool Addition- Level II



Level II Start: May 2014

Level II Complete: August 2014

Level II Funding: \$500,000

Total Budget: \$21M

Project Scope: Legislature approved funding for Level II design work.

Classroom Upgrade/Renovation



Construction Start: Fall 2014

Construction Complete: Fall 2016

Total Budget: \$4M

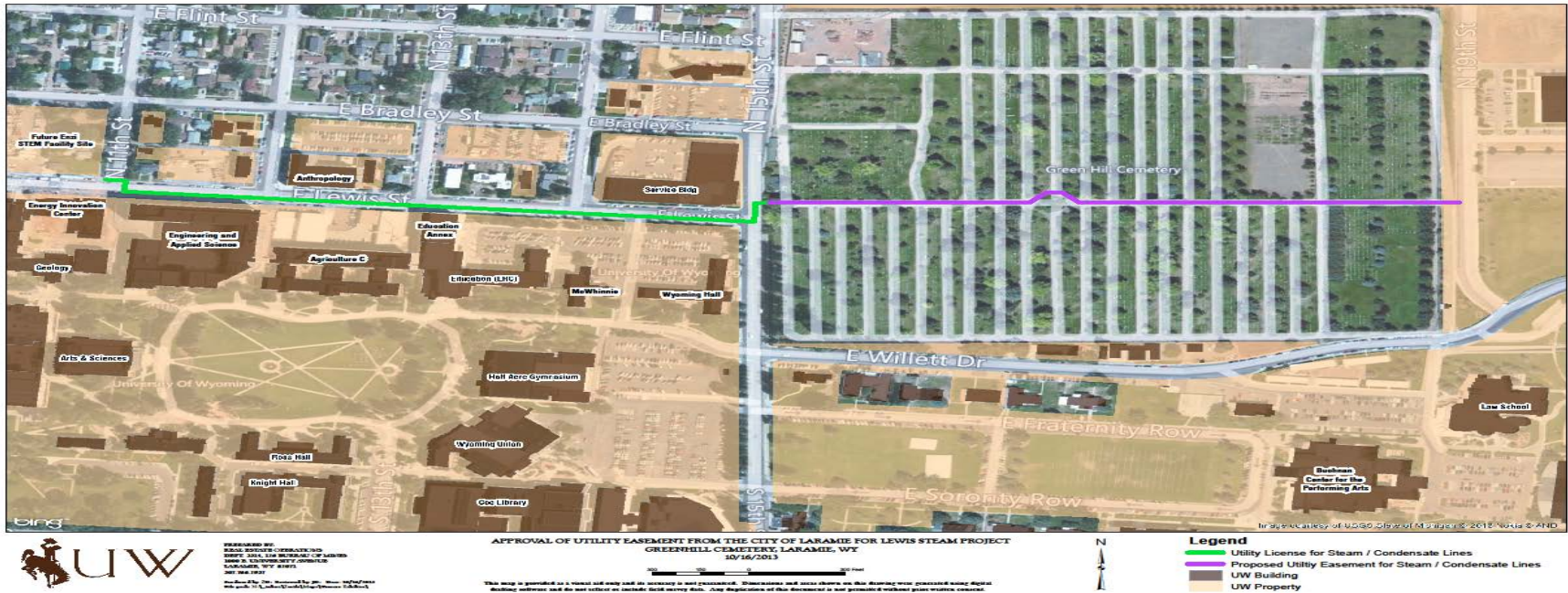
Project Scope: Legislature approved funding to upgrade/renovate classrooms and laboratory spaces campus-wide with new technology, equipment, furnishings, etc.

Master Plan for Student Housing



Request for Qualifications and Request for Proposal documents have been developed for potential replacement or renovation of existing residence halls and Washakie Dining facility.

Lewis Street Steam Line



Construction Start: Spring 2014

Completion: Fall 2014

Cost: \$5M

The addition of the Energy Innovation Center (EIC) puts the existing system at capacity and any development north of Lewis Street adjacent to core campus requires an expansion of the steam distribution system to increase capacity. The STEM Education Laboratory will require this modification for the facility to operate effectively. The Utilities Master Plan recommended that a new steam line be run from the Central Energy Plant (CEP) to a tie-in point near 10th and Lewis Street to address this issue.

The legislature approved the appropriation for the infrastructure improvements to include steam and condensate lines and re-routing of the west campus electrical feed.

Physical Plant General Storage Addition



Construction Start: July 2013

Construction Complete: Spring 2014

Cost: \$2M

Square Ft. 17,000

Use: Expanded storage space and maintenance facilities for UW Physical Plant. The project also included dedicated storage and warehouse space for the University Store (UW Bookstore).

ASUW Memorial

In 2012, the Associated Students of the University of Wyoming (ASUW) celebrated its 100th anniversary. ASUW has considered several projects on campus that would commemorate this anniversary. The project selected by ASUW would create a memorial to University of Wyoming students who pass on while matriculating at the University, and to provide equal recognition for all such students.

The proposed ASUW Memorial Plaza would consist of “ornamental features” including low sandstone walls with inspirational inscriptions, Vedauwoo boulders, flagstone paving, alpine rock garden plantings, and bench seating—similar to the nearby Sullivan and Simpson Plazas, at the northeast and southeast corners, respectively, of Prexy’s Pasture.

The total projected construction cost for the plaza is \$200,000. Pending the appropriation of 2015 ASUW funds, ASUW will have sufficient funding to undertake this project.

The proposed location for the ASUW Memorial Plaza is at the east end of Prexy’s Pasture, east of a row of existing Spruce trees and west of the plaza in front of Half Acre Gym. The following recommendations of the LRDP were considered:

- “Maximize aesthetic interest and attractiveness of Prexy’s Pasture...”
- “Increase opportunities for formal and informal meetings and gatherings in and adjacent to Prexy’s Pasture”.
- “Improve connectivity to and through Prexy’s Pasture”.



Other Projects

- Engineering Shop
- Transit Operations and Maintenance Facility
- Wells and Irrigation Systems Upgrade
- Piri Laboratory EIC room 377
- BSL3 O&M Appropriation
- Indoor Practice Facility Tree Replacement