

**THE UNIVERSITY OF WYOMING
BOARD OF TRUSTEES' REPORT**

January 15-16, 2015

The final report can be found on the University of Wyoming Board of Trustees website at
<http://www.uwyo.edu/trustees/>

University of Wyoming Mission Statement (March 2009)

The University of Wyoming aspires to be one of the nation's finest public land-grant research universities. We serve as a statewide resource for accessible and affordable higher education of the highest quality; rigorous scholarship; technology transfer; economic and community development; and responsible stewardship of our cultural, historical, and natural resources.

In the exercise of our primary mission to promote learning, we seek to provide academic and co-curricular opportunities that will:

- Expose students to the frontiers of scholarship and creative activity and the complexities of an interdependent world;
- Ensure individual interactions among students, faculty, and staff;
- Nurture an environment that values and manifests diversity, free expression, academic freedom, personal integrity, and mutual respect; and
- Promote opportunities for personal growth, physical health, athletic competition, and leadership development for all members of the University community.

As Wyoming's only university, we are committed to outreach and service that extend our human talent and technological capacity to serve the people in our communities, our state, the nation, and the world.

The primary vehicles for identifying the specific actions and resource allocations needed to accomplish this complex mission are the University's strategic plans, revised periodically.

TRUSTEES OF THE UNIVERSITY OF WYOMING AGENDA
January 15-16, 2015

WORK SESSIONS

Compensation/Salary Redistribution Policy for FY 2016, Mai/Jones.....	1
Comparator Institutions for Faculty Salaries, Jones	1
Fees for FY 2016, Mai	1
Division of Administration Matters	2
• Fiscal Year 2015 Budget Authority Increase - ASUW – Lowe	
• Construction Contracts Approvals – Mai	
○ Architect-Engineer for the Hoyt Hall Renovation Project	
○ CMAR for Engineering Building Project	
• Construction updates	
○ Multiple floods in facilities	
○ Current capital facilities projects under construction, under formal planning, and under consideration for the near term	
• Draft Sheridan Incubator Lease Agreement – Miller/Mai	
Concepts for New Residence Halls, Mai	13
Fiscal Reporting System Update, Mai	14
Board of Trustees Financial Information “101”, Mai	14
Updates	14
• College of Education Initiative of the Board, Palmerlee	
• Endowed Chairs Initiative of the Board, Palmerlee	
• Dean Searches, McGinity/Jones	
• Ad Hoc Committee - Dean/Faculty Interaction Committee, Mead	
• Ad Hoc Committee - Dean Searches, MacPherson	
Legislative Session Discussion, Boswell/Gruver	15
Updates	15
• WGEESIT/College of Engineering, Rodi/Laursen	
• Science Initiative, Shader/Brown	
• Community College Collaboration/Course Transfer, Hagy/Noel	
• University Strategic Plan Progress, McGinity/Jones	
• Enrollment, Axelson	
Student Satisfaction Survey, Axelson.....	16
Alumni License Plate Renewal, Axelson/Fry.....	17
Discussion re: FLAC, Miller.....	25

BUSINESS MEETING

Roll Call

Approval of Board of Trustees Meeting Minutes

November 12-14, 2014

Approval of Executive Session Meeting Minutes

November 12-14, 2014

Reports

- ASUW
- Staff Senate
- Faculty Senate

Public Testimony

[To be held from 11:30 a.m.-12:00 p.m. on Thursday, January 14, 2015]

Committee of the Whole

REGULAR BUSINESS

- Board Committee Reports 30
 - A. Fiscal and Legal Affairs, Mai
 - B. Alumni Board
 - C. Foundation Board, Marsh/Bostrom
 - D. Haub School Environment and Natural Resources Board, Davis
 - E. Energy Resources Council (ERC), True

CONSENT AGENDA

- 1. Approval of Contracts and Grants, Gern 31
- 2. Approval of Personnel, Jones 63
- 3. Revisions to UW Regulations: Regulations 8-1, 8-3, 3-225..... 70
- 4. Approval of Degree Changes, Jones 79
- 5. Fiscal Year 2015 Budget Authority Increase – ASUW, Lowe 83
- 6. Approval of Architect-Engineer for the Hoyt Hall Renovation Project 83
- 7. Approval of CMAR for Engineering Building Project..... 83

New Business

Old Business

- Retreat Location

Date of Next Meeting – February 9, 2015, Conference Call; Laramie, Wyoming

Adjournment

Information Only Items:

- 1. Progress Report/Change Orders, Mai.....84
-
-

AGENDA ITEM TITLE: **Compensation/Salary Distribution Policy for FY 2016**, Mai/Jones

CHECK THE APPROPRIATE BOX(ES):

- Work Session
- Education Session
- Information Item
- Other Specify:

BACKGROUND AND POLICY CONTEXT OF ISSUE:

Vice President of Administration Bill Mai will discuss the compensation/salary distribution policy for FY 2016 with the Board.

AGENDA ITEM TITLE: **Comparator Institutions for Faculty Salaries**, Jones

CHECK THE APPROPRIATE BOX(ES):

- Work Session
- Education Session
- Information Item
- Other Specify:

BACKGROUND AND POLICY CONTEXT OF ISSUE:

Vice President for Academic Affairs David Jones will share which institutions should be used as comparator schools when considering faculty salaries.

AGENDA ITEM TITLE: **Fees for FY 2016**, Mai

CHECK THE APPROPRIATE BOX(ES):

- Work Session
- Education Session
- Information Item
- Other Specify:

BACKGROUND AND POLICY CONTEXT OF ISSUE:

Vice President of Administration Bill Mai will discuss the fees for FY 2016.

AGENDA ITEM TITLE: **Division of Administration Affairs**

CHECK THE APPROPRIATE BOX(ES):

- Work Session
- Education Session
- Information Item
- Other Specify: (Consent Agenda)

Fiscal Year 2015 Budget Authority Increase – ASUW, Lowe

University of Wyoming (Agency 067) Budget Authority Increase

BACKGROUND AND POLICY CONTEXT OF ISSUE:

At their November 2013 meeting, the Board of Trustees approved ASUW's request for a \$10,000 increase in the university's Fiscal Year 2014 operating budget authority to acquire design services for the ASUW Student Memorial Plaza. In March 2013, the ASUW Senate passed Senate Bill #2392 (attached), which earmarked \$125,000 from the ASUW Special Services Endowment expendable account to be used for this project. Ten-thousand dollars (\$10,000) of the \$125,000 was designated for planning, scoping, and rendering of the project through an outside consultant.

ASUW leadership intended to pursue matching funds for the project as preliminary construction cost estimates were in the \$250,000 range. The design consulting firm has submitted a preliminary construction cost estimate of \$234,541. Because ASUW was unable to secure matching funds, the ASUW Senate passed Senate Bill #2443 in October 2014 (attached) which contemplates utilizing \$109,541 from the ASUW Facilities Endowment expendable account to fully fund the estimated cost of the ASUW Student Memorial.

A Section II budget authority increase of \$224,541 (\$234,541 cost estimate less \$10,000 approved previously) is needed to authorize commencement of work on the ASUW Student Memorial project.

PRIOR RELATED BOARD DISCUSSIONS/ACTIONS:

The Board approved the university's FY 2015 operating budget, which includes ASUW's budget, in May 2014.

The Board approved a budget increase of \$10,000 in November 2013 for the aforementioned design services.

WHY THIS ITEM IS BEFORE THE BOARD:

The Trustees of the University of Wyoming, a constitutional body, are responsible for the "management of the university" (Wyoming Constitution, Article 7, 17).

The Board's approval of increases in the operating budget, including ASUW budget authority increases in excess of \$7,500, is required by Trustee Regulations and university budget procedures.

ARGUMENTS IN SUPPORT:

The allocation of ASUW funds will support a project that will create a space for students to gather in remembrance of students who died while they were a member of the UW student body.

ARGUMENTS AGAINST:

None.

ACTION REQUIRED AT THIS BOARD MEETING:

Approval of a \$224,541 increase in the university's FY 2015 Section II operating budget for the ASUW Student Memorial project as described in this item.

PRESIDENT'S RECOMMENDATION:

The President recommends approval of the FY 2015 budget increase as proposed.

SENATE BILL #2392

TITLE: ASUW Special Services Endowment Allocation for the Planning, Seeping, Rendering, and Creation of the Student Memorial Plaza

DATE: March 7, 2013

AUTHORS: President Defebaugh, Vice President Kahler, and Chief of Staff Hayes

SPONSORS: Senators Messer, Perala, and Unangst



1. WHEREAS, the Associated Students of the University of Wyoming (ASUW) has been in
2. development of a "Student Memorial" for the last four years; and,
3. WHEREAS, the University of Wyoming is currently without a means in which to recognize,
4. honor, and memorialize loss of student life; and,
5. WHEREAS, the University of Wyoming and ASUW have a firm belief the these lost
6. students are always a UW Cowboy; and,
7. WHEREAS, the University of Wyoming and ASUW should highlight the Cowboy spirit that
8. these student embrace and live while attending, and then carry with them; and,
9. WHEREAS, the construction and renovation of Half Acre Gymnasium is beginning spring of
10. 2013, and this timing is appropriate to construct a student memorial adjacent to the Student
11. Union, Half Acre Gym, and Prexy's Pasture; and,
12. WHEREAS, the ASUW Student Services Endowment (Facilities Endowment) in FY '13
13. currently has a budget of \$119,245.72 with an additional \$125,000.00 earmarked from Senate
14. Bill #2345 for a total of \$244,245.72 with an additional interest rate of \$66,607.09 gained in
15. FY '13 for a total of \$310,852.81 expendable in FY '14.
16. THEREFORE, be it enacted by the Student Government of the Associated Students of the
17. University of Wyoming (ASUW), that the ear mark of \$125,000.00 from Senate Bill #2345

18. be reallocated to fund a Student Memorial project; and,
19. THEREFORE, be it further enacted by ASUW that \$10,000.00 of the \$125,000.00
20. earmarked be allocated to hire an outside consultant to help with the planning, scoping, and
21. rendering of the ASUW Student Memorial Plaza; and,
22. THEREFORE, be it further enacted by ASUW that the allocation not be transferred from the
23. ASUW account until a contract is signed to hire the consultant; and,
24. THEREFORE, be it further enacted that ASUW is financially committed to the completion
25. and dedication of the Student Memorial Plaza project through earmarked funds, outside
26. fundraising, and other appropriate sources.

Referred to: Budget and Planning Committee

Date of Passage: 03/26/13

Signed: Beert Kehler

(ASUW Chairperson)

"Being enacted on 4/2/2013, I do hereby sign my name hereto and
approve this Senate action."

Joel W. DeFbaugh
ASUW President

SENATE BILL #2443

TITLE: Additional Funds Allocation for the Creation of the Student Memorial Plaza

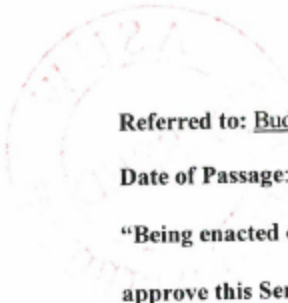
DATE: October 30, 2014

AUTHOR: Executive Ryan

SPONSORS: President Balogun; Senators De Wett, Hernandez, Kerbs, and Krysl; SAL
Graham



1. WHEREAS, the Associated Students of the University of Wyoming (ASUW) has been in
2. serious development of a "Student Memorial" for the last two years; and,
3. WHEREAS, it is still the belief of ASUW that the University of Wyoming is in need of a way
4. to recognize the loss of student life; and,
5. WHEREAS, in Senate Bill #2392 the ASUW Student Senate resolved to be committed
6. financially to the completion and dedication of the Student Memorial Plaza; and,
7. WHEREAS, there is currently \$125,000.00 allocated for the project; and,
8. WHEREAS, the current cost of completion for the Student Memorial Plaza is quoted for
9. \$234,541.00; and,
10. WHEREAS, for FY'15 the ASUW Facilities Endowment has an expendable amount of
11. \$297,631.81.
12. THEREFORE, be it enacted by the Student Senate of the Associated Students of the University
13. of Wyoming that an additional \$109,541.00 be allocated from the Facilities Endowment to go
14. towards the completion of the Student Memorial Plaza; and,
15. THEREFORE, be it further enacted that the ASUW President submit the final project proposal
16. to the ASUW Senate for final approval.



Referred to: Budget and Planning

Date of Passage: 11/11/14

Signed: Nicando Frid Gonzalez
(ASUW Chairperson)

"Being enacted on 11/14/14

, I do hereby sign my name hereto and

approve this Senate action." 

Addendum A



CONSTRUCTION OPINION

February 25, 2014
PROJECT: UNIVERSITY OF WYOMING - ASUW

BY: MK CHK, COO
Project # 13182.003
Based on February 25, 2014 Plan Set

NOTES

1. This is a number of magnitude estimate and is based on work completed to date. The quantities shown are approximate.

2. Contingency costs do not include costs incurred for project development.

3. Contingency percentages are included in the estimate. The schematic design contingency accounts for the many details and associated costs that are not unknown conditions and/or costs that may be encountered during the construction phase. The owner's construction contingency allows for change orders and unforeseen events.

4. Contingency costs that may be encountered during the construction phase. The contingency was reviewed at the owner's request.

5. Does not include excavation beyond 2014.

6. * - scored

7. * - scored

8. * - scored

9. * - scored

10. * - scored

11. * - scored

12. * - scored

13. * - scored

14. * - scored

15. * - scored

16. * - scored

17. * - scored

18. * - scored

19. * - scored

20. * - scored

21. * - scored

22. * - scored

23. * - scored

24. * - scored

25. * - scored

26. * - scored

27. * - scored

28. * - scored

29. * - scored

30. * - scored

31. * - scored

32. * - scored

33. * - scored

34. * - scored

35. * - scored

36. * - scored

37. * - scored

38. * - scored

39. * - scored

40. * - scored

41. * - scored

42. * - scored

43. * - scored

44. * - scored

45. * - scored

46. * - scored

47. * - scored

48. * - scored

49. * - scored

50. * - scored

51. * - scored

52. * - scored

53. * - scored

54. * - scored

55. * - scored

56. * - scored

57. * - scored

58. * - scored

59. * - scored

60. * - scored

61. * - scored

62. * - scored

63. * - scored

64. * - scored

65. * - scored

66. * - scored

67. * - scored

68. * - scored

69. * - scored

70. * - scored

71. * - scored

72. * - scored

73. * - scored

COST OPINION

ASUW - MEMORIAL

DRAFT
February 25, 2014

ITEM	QUANTITY	UNIT	COST	COST
MOBILIZATION				
	1	LS	\$10,000.00	\$10,000
CATEGORY SUBTOTAL				
DEMOLITION				
Tree Removal	1	EA	\$500.00	\$500
Site Sod	6,070	SF	\$0.85	\$5,159.50
CATEGORY SUBTOTAL				
PAVING				
Flagstone	1,490	SF	\$32.00	\$47,680
Colored Concrete Paving	0	SF	\$4.50	\$0
Gray Concrete Paving	0	SF	\$8.50	\$0
CATEGORY SUBTOTAL				
SITE WORK				
Star & Ramp Rating	0	LF	\$86.00	\$0
Star Wing Walls and End of Ramp Wall	0	LF	\$70.00	\$0
Alpine Stone Concrete Forming	50	TON	\$150.00	\$7,500
Drain Mat & Per Pile drainage w/ connection	1	EA	\$2,500.00	\$2,500
Drystack Stone Wall & Cap	14	LF	\$120.00	\$1,680
Miscellaneous Signage	1	ALLOW	\$1,500.00	\$1,500
ASUW Signage	1	ALLOW	\$2,500.00	\$2,500
CATEGORY SUBTOTAL				
LANDSCAPE				
Deciduous Trees	0	EA	\$350.00	\$0
Evergreen Trees	8	EA	\$550.00	\$4,400
Foundation Shrubs	435	SF	\$4.00	\$1,740
Alpine Plants	780	SF	\$5.00	\$3,900
Sod	3,335	SF	\$0.40	\$1,334
Boundaries	205	TON	\$300.00	\$61,500
Ingoting	4,350	SF	\$1.75	\$7,613
Wood Mulch	300	SF	\$9.50	\$2,850
Gravel Mulch	780	SF	\$1.50	\$1,170
Incorporated Soil	85	CY	\$28.00	\$2,380
CATEGORY SUBTOTAL				
SITE FURNISHINGS				
UM Memorial Benches (By owner)	50	EA	\$0.00	\$0
Trash Receptacles	1	EA	\$1,300.00	\$1,300
CATEGORY SUBTOTAL				
General Conditions				
Design Fees			8%	\$13,251
			10%	\$18,544
Total				
			5%	\$9,773
			15%	\$29,518
Grand Total (Schematic Phase)				
				\$234,541

at all steel benches & endwalls to boundaries
Short quotes in candidate's block above
Main quote or ASUW recognition
\$5 ramp; 65 stairs w/ center
CMU core, FF 3 side, cap, 30" max
560 sf stippling in alpine zones
30" - with same for alpine multi-varnished
includes seed forms, local soil

UM Standard Bench by University

Notes:
1. This is a number of magnitude estimate and is based on work completed to date. The quantities shown are approximate.
2. Contingency costs do not include costs incurred for project development.
3. Contingency percentages are included in the estimate. The schematic design contingency accounts for the many details and associated costs that are not unknown conditions and/or costs that may be encountered during the construction phase. The owner's construction contingency allows for change orders and unforeseen events.
4. Contingency costs that may be encountered during the construction phase. The contingency was reviewed at the owner's request.
5. Does not include excavation beyond 2014.

Construction Contracts Approvals, Mai

Architect-Engineer for the Hoyt Hall Renovation Project

BACKGROUND AND POLICY CONTEXT OF ISSUE:

Hoyt Hall was built in 1916 as a women's dormitory and is approximately 29,939 gross square feet in area. The scope of the renovation project includes life-safety and accessibility improvements as required by code, along with repairs and enhancements to finishes in faculty offices, classrooms, study areas, and other spaces in Hoyt Hall. Some minor remodeling may also be involved in the project. The University will utilize the design-bid-build project delivery method for this project.

The total projected cost for the renovation is \$2,500,000. The project would be funded through state appropriations for Major Maintenance.

The professional architect/engineering services were publicly advertised in September and October 2014 with qualification responses received by October 21, 2014. Five statements-of-qualification were received from interested firms. Three respondents were scheduled for formal interviews that took place on November 7, 2014. The recommended ranking of the firms by the Hoyt Hall Renovation Planning Team and the Facilities Planning Office is as follows:

1. MOA Architecture, Casper, Wyoming
2. Dale Buckingham Architects, Inc., Sheridan, Wyoming
3. TDSi – The Design Studio, Inc., Cheyenne, Wyoming

PRIOR RELATED BOARD DISCUSSIONS/ACTIONS:

None

WHY THIS ITEM IS BEFORE THE BOARD:

Authorization is required from the Board of Trustees to contract the architect/engineering services for the Hoyt Hall Renovation.

ARGUMENTS IN SUPPORT:

\$2,500,000 of Major Maintenance funding has been budgeted for this project.

ARGUMENTS AGAINST:

None

ACTION REQUIRED AT THIS BOARD MEETING:

Authorization to contract with the first-ranked firm, **MOA Architecture of Casper, Wyoming**. If favorable negotiations cannot be completed with the first-ranked firm, negotiations will be opened with the second-ranked firm and third-ranked firm until a contractual agreement can be successfully completed.

PRESIDENT'S RECOMMENDATION:

It is recommended that the Board of Trustees of the University of Wyoming authorize the contracting with the recommended first-ranked architect/engineering firm, **MOA Architecture of Casper, Wyoming.**

CMAR for Engineering Building Project

BACKGROUND AND POLICY CONTEXT OF ISSUE:

The Engineering Building (EB) Expansion and Renovation project will deliver new and potentially renovated spaces necessary to support the University of Wyoming's goal of developing the College of Engineering and Applied Science (CEAS) into a Tier 1 (top quartile) education and research program. The top priority for the project is the construction of new spaces to deliver modern educational and research capabilities. Spaces currently planned for delivery as a first priority include: a new shop and adjacent student project areas; teaching and computer labs in an active learning (studio) configuration; student computer labs and study areas; modern, reconfigurable research labs with associated office and collaborative ("collision") spaces, reconfigurable meeting/conference rooms; and an expanded drilling simulator facility. Current CEAS buildings are located south of Lewis Street on the UW Main Campus, with construction of new EB elements planned for north of Lewis Street between 11th and 12th streets. Secondary (lower) priority elements of the project to be pursued depending on the availability of funds within the budget are: demolition of the Sawtooth structure (located on the interior of the current North, East, South, and West Wings) and landscaping of the resulting infill courtyard area; and repurposing and rebalancing of some existing spaces in the 1927 South Building to incorporate a new CEAS main entrance and possibly other South Building renovations (e.g., upgrades to additional office and support spaces, information technology systems, etc.).

The total budget ("all in") for the Engineering Building Expansion and Renovation project is \$106M. The project will be funded through \$76M from State Appropriation, \$15M from private donations, and \$15M from State matching funds. The preliminary construction budget for the Engineering Building Expansion and Renovation is \$82M.

The Facilities Planning Office advertised for Construction Manager-at-Risk qualifications in July 2014. Seven responses were received on September 3, 2014. The Statements of Qualification (SOQs) were reviewed and narrowed to four firms by the Engineering Building Expansion and Renovation CMAR Selection Team. The following short-listed firms were issued Requests for Proposals and were interviewed on October 6, 2014:

- Barton Malow/Haselden Wyoming Constructors – Laramie, Wyoming
- GE Johnson Construction Wyoming – Jackson, Wyoming
- JE Dunn Construction – Denver, Colorado
- The Whiting-Turner Contracting Company – Greenwood Village, Colorado

The Selection Team based the ranking of the CMAR finalists on the qualifications of the preconstruction and construction personnel, the firms' experience and capabilities with projects

similar to the Engineering Building Expansion and Renovation project, and the proposals providing the best value to the University. The ranking is as follows:

1. GE Johnson Construction Wyoming – Jackson, Wyoming
2. Barton Malow/Haselden Wyoming Constructors – Laramie, Wyoming
3. JE Dunn Construction – Denver, Colorado
4. The Whiting-Turner Contracting Company – Greenwood Village, Colorado

PRIOR RELATED BOARD DISCUSSIONS/ACTIONS:

- July 2011 – Board of Trustees approved the FY 2013-2014 Capital Construction Request for the University of Wyoming, which included planning funds for the Engineering Building Addition and Renovation.
- May 2012 – Board of Trustees was briefed on the Engineering Complex - Engineering Building Addition and Renovation and the Energy Engineering Research Facility (now named the High Bay Research Facility).
- January 2013 – Board of Trustees approved the architect/engineering firm of Malone Belton Abel, P.C., Laramie, Wyoming, in association with GSG Architecture, P.C., Casper, Wyoming and Zimmer Gunsul Frasca, Seattle, WA for the Engineering Building Expansion and Renovation and the Energy Engineering Research Facility (now named the High Bay Research Facility) projects.

WHY THIS ITEM IS BEFORE THE BOARD:

This item is for authorization by the Board of Trustees to contract with the Construction Manager-at-Risk firm for the Engineering Building Expansion and Renovation project.

ARGUMENTS IN SUPPORT:

- The 2012 Wyoming Legislature appropriated \$1.15M for the Level II study
- The 2012 Legislature appropriated \$30M requiring a match of \$15M to begin the funding of an expected \$100M plus total project for the Engineering Building Expansion and Renovation.
- The 2012 Legislature appropriated \$15M requiring a match of \$15M to fund the construction of the Energy Engineering Research Facility (now named the High Bay Research Facility).
- The Level I study is completed and in July 2014 Governor Mead authorized the University of Wyoming to expend appropriated funds for design and construction of the Engineering Building.

ARGUMENTS AGAINST:

None

ACTION REQUIRED AT THIS BOARD MEETING:

Authorization to complete negotiations and contract with **GE Johnson Construction Wyoming of Jackson, Wyoming**, recommended by the University Administration for the Engineering Building Expansion and Renovation.

Note: Once more detailed design is completed, fundraising activities can begin. Recall that in his budget recommendations to the 2015 Legislature, the Governor recommended release of previously appropriated state funds for construction, but that UW could not expend those funds without the approval of the Governor. The budget recommendations suggest criteria upon which to base the Governor's approval.

PRESIDENT'S RECOMMENDATION:

It is recommended that the Board of Trustees of the University of Wyoming authorize contracting with **GE Johnson Construction Wyoming of Jackson, Wyoming**, for the Engineering Building Expansion and Renovation. If negotiations are not successful with the first-ranked firm then negotiations will be terminated with the first-ranked firm and opened with the second-ranked firm.

Construction Updates, Mai

- **Update on the Multiple Floods in Facilities**
- **Update – Current Capital Facilities Projects**

BACKGROUND AND POLICY CONTEXT OF ISSUE:

Vice President of Administration Bill Mai will update the Board on several construction projects on campus.

Draft Sheridan Incubator Lease Agreement, Miller/Mai

BACKGROUND AND POLICY CONTEXT OF ISSUE:

Vice President and General Counsel Rick Miller, and Vice President of Administration Bill Mai will update the Board on the draft Sheridan incubator lease agreement.

AGENDA ITEM TITLE: Concepts for New Residence Halls, Mai

CHECK THE APPROPRIATE BOX(ES):

- Work Session
- Education Session
- Information Item
- Other Specify:

BACKGROUND AND POLICY CONTEXT OF ISSUE:

Vice President of Administration Bill Mai will present concepts for new residence halls to the Board.

AGENDA ITEM TITLE: Fiscal Reporting System Update, Mai

CHECK THE APPROPRIATE BOX(ES):

- Work Session
- Education Session
- Information Item
- Other Specify:

BACKGROUND AND POLICY CONTEXT OF ISSUE:

Vice President of Administration Bill Mai will update the Board on the fiscal reporting system.

AGENDA ITEM TITLE: **Board of Trustees Financial Information "101"**, Mai

CHECK THE APPROPRIATE BOX(ES):

- Work Session
- Education Session
- Information Item
- Other Specify:

BACKGROUND AND POLICY CONTEXT OF ISSUE:

Vice President of Administration Bill Mai will review fundamental financial information with the Board.

AGENDA ITEM TITLE: **Updates**

- College of Education Initiative of the Board, Palmerlee
- Endowed Chairs Initiative of the Board, Palmerlee
- Dean Searches, McGinity/Jones
- Ad Hoc Committee - Dean/Faculty Interaction Committee, Mead
- Ad Hoc Committee - Dean Searches, MacPherson

CHECK THE APPROPRIATE BOX(ES):

- Work Session
- Education Session
- Information Item
- Other Specify:

BACKGROUND AND POLICY CONTEXT OF ISSUE:

Respective presenters will share updates on their topics with the Board.

AGENDA ITEM TITLE: **Legislative Session Discussion**, Boswell/Gruver

CHECK THE APPROPRIATE BOX(ES):

- Work Session
- Education Session
- Information Item
- Other Specify:

BACKGROUND AND POLICY CONTEXT OF ISSUE:

Vice President of Governmental and Community Affairs Chris Boswell and Special Advisor to the President for External Relations Dave Gruver will discuss the legislative session with the Board.

AGENDA ITEM TITLE: **Updates**

- WGEESIT/College of Engineering, Rodi/Laursen
- Science Initiative, Shader/Brown
- Community College Collaboration/Course Transfer, Hagy/Noel
- University Strategic Plan Progress, McGinity/Jones
- Enrollment, Axelson

CHECK THE APPROPRIATE BOX(ES):

- Work Session
 Education Session
 Information Item
 Other Specify:

BACKGROUND AND POLICY CONTEXT OF ISSUE:

The respective presenters will update the Board on their topics.

Enrollment- Axelson

BACKGROUND AND POLICY CONTEXT OF ISSUE:

Spring semester classes begin on January 26 with the spring enrollment census date on February 16. Spring enrollment will be shared with the Board later in February and in more depth at the March Board of Trustee meeting.

Official counts for the 2014 fall semester were taken on September 23rd (the 15th class day of the semester) and were shared at the November Board of Trustee meeting. Updated fall 2014 semester counts will be discussed at the January Board of Trustee meeting.

In addition, an update on the continued progress on enrollment goals, recruiting and retention efforts and noted successes will be shared.

WHY THIS ITEM IS BEFORE THE BOARD:

This information is presented for the general information of the Trustees.

AGENDA ITEM TITLE: **Student Satisfaction Survey**, Axelson

CHECK THE APPROPRIATE BOX(ES):

- Work Session
- Education Session
- Information Item
- Other Specify:

BACKGROUND AND POLICY CONTEXT OF ISSUE:

Highlights of the UW Student Satisfaction Survey will be shared at the January Board of Trustee meeting. As background, every 2 years since 1994, UW administers student satisfaction surveys to its students. Noel-Levitz, ACT, and an in-house inventory are administered. In March of 2014, classes containing over 1000 students, reflecting a representative sample, were invited to provide the paper-and-pencil survey during a class day in the spring. Outreach and UW Casper students were also sampled.

Results were compiled by WYSAC (Wyoming Survey and Analysis Center). Noel-Levitz offers national norming, but ACT and the in-house student satisfaction survey do not. Questions range from students' satisfaction with facilities and programs to their classroom teaching and campus climate.

The in-house inventory allows UW to gauge how current initiatives are faring (internationalization efforts, for one) and to help identify areas for improvement. The surveys offer longitudinal data on how students' perceptions have changed over time. Clear shifts in satisfaction can be seen accompanying major renovations or investment of resources, for example. The national data provides information on how UW satisfaction may differ from that of other schools.

WHY THIS ITEM IS BEFORE THE BOARD:

This information is presented for the general information of the Trustees.

AGENDA ITEM TITLE: **Alumni License Plate Renewal**, Axelson/Fry

CHECK THE APPROPRIATE BOX(ES):

- Work Session
- Education Session
- Information Item
- Other Specify:

BACKGROUND AND POLICY CONTEXT OF ISSUE:

**University of Wyoming Alumni Association
University of Wyoming Motor Vehicle License Plate Program
Proposal for Renewal as of December 5, 2014**

Background:

Effective January 1, 2008, the Wyoming Legislature approved the University of Wyoming Motor Vehicle License Plate Program. The statutes authorizing the program are 21-17-118 and 31-2-219 (Appendix 1.) On May 9, 2008, the University published University Regulation 255; Revision 1 dated May 9, 2008 (Appendix 2) to guide the implementation of the statute. The program is in place through December 31, 2016. In 2012, the statutes were updated to include an automatic renewal of the program on January 1, 2017. The UW Alumni Association was given the authority to manage the program including marketing and sales of the license plates, depositing the funds in an authorized account, and overseeing the scholarship application and student selection process. We are excited to continue in this role for the second cycle. We have managed the program using Alumni Association funds to cover the direct and indirect costs of the program.

Summary of Impact through September 30, 2014:

Through September 30, 2014, 6,242 license plates have been sold, generating \$624,200 for student scholarships. Fees collected and remitted to the Wyoming Department of Transportation total \$187,260. From the scholarship funds collected through September 30, 2014, \$185,000 has been distributed to 41 UW students through the UW Office of Financial Aid. By the end of the first cycle, over 90 UW students will have received financial aid from this program and a total of \$24,000 will have been distributed to multiple Recognized Student Organizations (RSO) on the UW campus. As of September 30, 2014, a balance of \$423,046 is on hand in the scholarship account. A balance of over \$323,000 is projected to be on hand at June 30, 2016. Assuming the initial awards made in the last year cycle of the first eight year term (April 2016) are fulfilled through June 30, 2020, it is projected that total scholarship revenues will total \$650,600 with \$435,000 financial aid having been distributed to UW students. After all of the first cycle awards are fulfilled by June 30, 2020, the account is projected to have surplus of \$190,496. See appendix 3 for historical analysis of revenues and expenditures, cash balance and projected surplus.

We are confident in the above projections based upon the following conservative assumptions.

- 1) No further sales of license plates from July 1, 2015 through December 31, 2016.
- 2) The final scholarship awards in this cycle would be made in the spring of 2016 and the first-year recipients, in addition, to the ones already receiving financial aid would receive the financial aid awarded to them through June 30, 2020.
- 3) All students selected to receive aid would matriculate at UW for the full term of the initial award of one, two or four years, as applicable, i.e no disqualifications are projected.

Evaluation of the Program:

There is tremendous enthusiasm for the program among our alumni and UW friends in Wyoming. They enjoy showing their UW pride knowing they are making a difference in supporting student scholarships. The UW Alumni Association has done an exceptional job marketing the program and our efforts have resulted scholarship dollars generated above the amount planned in 2008. In addition, we have been effective in the selection process to identify students with potential matriculate at UW through graduation. As noted above, the UW Alumni Association has funded all direct and indirect cost of operating the program. In any given year, these expenses total from \$5,000 - \$7,500 per year.

By all indications from our alumni base, there will be significant interest in renewing the program with an updated fresh license plate design. On Tuesday, October 21, 2014 Pam Brekken, Public Relations Coordinator for the UWAA, attended a meeting in Cheyenne with WYDOT personnel to discuss the program. We learned three main things from the meeting: 1) A new plate is being designed with a gold background with brown lettering. 2) Effective January 1, 2017, the brown plates from the first cycle will expire. 3) WYDOT is developing a system in which the plates may be ordered online. Our Alumni Association board is committed to coordinating the program for another eight year period.

Proposal for Next Eight-Year Cycle Scholarship Awards and Fee Structure:

We would recommend that the original scholarship awards be continued as listed in University regulation 255, Revision 1 dated May 9, 2008. In summary, the awards would be made as follows:

- 1) Nine 4-year Scholarships of \$1,500 to Wyoming students each per year.
- 2) Three scholarships of \$1,500 each per year, subject to annual renewal to non-traditional students as described in the University Regulation 1 dated May 9, 2008.
- 3) One award of \$3,000 to a Recognized Student Organization each year.

Given the financial success of the program with the surplus from the first cycle of the program and the expected enthusiasm from UW alumni and friends in the state to continue the program, we believe there is the financial capacity to support additional new scholarships for UW students. We project that 7,000 license plates will be sold in the second cycle. A key student recruitment priority of the University is to increase the number of transfer students from Wyoming community colleges admitted to UW. Therefore, we propose that ten (10) new 3-year scholarships be made available for Wyoming community college transfer students. Our recommendation would be that in each year that a minimum of one scholarship be offered to a student from each Wyoming community college each year. New awards would be offered through academic year 2020-21. The allocation of funds for the

community college awards is included in Appendix 4. In summary, the proforma financials for all of the second cycle financial aid awards are included in Appendix 5 and project that a surplus of \$22,296 will be available on June 30, 2028. Therefore, the costs of the proposed new community college scholarships will be covered by the first cycle surplus and the additional sales expected in the second cycle.

For the first eight-year cycle of the program a fee of \$100 has been charged and one hundred percent of the fee has been deposited in the university scholarship account. While the statute allowed for fee increases in relation to the Wyoming cost-of-living index in each year of the program, the fee was never increased. As we move forward, we would propose that the fee remain at \$100. This program is immensely popular and it generated a surplus in the first cycle with the cost at \$100. By keeping the price the same, we believe our alumni will respond and participate in the second cycle.

Conclusion:

By all measures, the University of Wyoming Motor Vehicle License Plate Program has been successful. UW students have benefitted significantly from the financial aid, in fact, the award has made the difference in some students being able to attend or not and the University has benefitted from the pride that over 6,000 UW alumni and friends display by wearing these plates proudly on their automobiles. The University of Wyoming Alumni Association is excited to be a partner with the State of Wyoming and the University of Wyoming in providing this program to the citizens of Wyoming for a second cycle beginning on January 1, 2017.

Appendix:

1. Statute 21-17-118 and 31-2-219
2. University Regulation 255, Revision 1 dated May 9, 2008
3. Historical Financial Analysis 2008 -2016 Award Cycle
4. Proposed New Wyoming Community College Scholarships
5. Proforma Financial Statement for the Second Cycle – 2017 - 2024

**21-17-118. Student support and student financial aid fund;
rulemaking authority granted.**

(a) The board of trustees is authorized to establish a student support and student financial aid fund for students at the university. The fund shall include those monies collected by the university pursuant to W.S. 31-2-219 and such other gifts, contributions, donations, grants, or other funds provided to the university for purposes of this section. Financial aid funded under this section shall be in addition to any Hathaway scholarship awarded a student under W.S. 21-16-1301 et seq., but shall be considered for purposes of calculating unmet financial need for Hathaway need based scholarships.

(b) The board shall promulgate university regulations necessary to carry out the purposes of this section, including procedures for application and selection of recipients of financial aid under this section. Revenues in the fund established under this section shall be used exclusively for student financial aid and for projects and programs that directly support students at the university. The board shall coordinate with the University of Wyoming Alumni Association in the university's administration of the student support funds and financial aid under this section in accordance with an agreement with that association, or its successor organization.

31-2-219. University of Wyoming license plates.

(a) Any person required to register a vehicle in Wyoming pursuant to this article may apply to the University of Wyoming for a statement of eligibility for distinctive University of Wyoming license plates for any motor vehicle that is not a commercial vehicle or multipurpose vehicle owned or leased by the applicant upon registration of the vehicle. Upon payment by the applicant of a fee of one hundred dollars (\$100.00) established and assessed by the University of Wyoming, the university shall issue a written statement of eligibility for University of Wyoming license plates. Application shall be made at least thirty (30) days before registration of the vehicle expires. Any fees collected under this section shall be payable to the University of Wyoming, shall be deposited in a separate account and are continuously appropriated for use as provided in W.S. 21-17-118. The fee authorized under this section may be increased annually up to the percentage increase as shown by the Wyoming cost-of-living index as determined by the division of economic analysis of the department of administration and information.

(b) License plates issued under this section shall be displayed upon the vehicle for which they are issued.

(c) Except as provided in this section, application for, issuance and renewal of University of Wyoming license plates shall be subject to the same requirements and fees as provided in this article. The fee required under W.S. 31-3-102(a)(viii) shall accompany each application.

The University of Wyoming
Board of Trustees' Report
January 15-16, 2015
Page 22

UW License Plate Scholarship Program													Appendix 3			
Projected Financial Analysis																
As of September 30, 2014																
	FY 2008	FY 2009	FY 2010	FY 2011	FY 2012	FY 2013	FY 2014	FY 2015 Through 9/30/14	FY 2015 10/1/14-6/30/15	(A) FY 2016	Total FY08 - FY16	(B) 2017	2018	2019	FY 2020	Total FY08-FY20
Sales - #	1,916	1,460	727	508	587	461	495	88	264	-	6,506	-	-	-	-	6,506
Cumm. Sales	1,916	3,376	4,103	4,611	5,198	5,659	6,154	6,242	6,506	6,506						
Sales \$ - \$130 ea.	\$ 249,080	\$ 189,800	\$ 94,510	\$ 66,040	\$ 76,310	\$ 59,930	\$ 64,350	\$ 11,440	\$ 34,320	\$ -	\$ 845,780	\$ -	\$ -	\$ -	\$ -	\$ 845,780
Earnings, if any	\$ 249,080	\$ 189,800	\$ 94,510	\$ 66,040	\$ 76,310	\$ 59,930	\$ 64,350	\$ 11,440	\$ 34,320	\$ -	\$ 845,780	\$ -	\$ -	\$ -	\$ -	\$ 845,780
Cumulative \$	\$ 249,080	\$ 438,880	\$ 533,390	\$ 599,430	\$ 675,740	\$ 735,670	\$ 800,020	\$ 811,460	\$ 845,780	\$ 845,780		\$ 845,780	\$ 845,780	\$ 845,780	\$ 845,780	
Distribution:																
State Fee - \$30 ea.	\$ 57,480	\$ 43,800	\$ 21,810	\$ 15,240	\$ 17,610	\$ 13,830	\$ 14,850	\$ 2,640	\$ 7,920	\$ -	\$ 195,180	\$ -	\$ -	\$ -	\$ -	\$ 195,180
Misc		260	130	50	-	85	28	480	50	\$ -	\$ 1,083	\$ 100	\$ 100	\$ 100	\$ 100	\$ 1,483
Scholarship			20,220	26,250	34,500	45,051	43,500	15,600	58,500	\$ 58,500	\$ 302,121	\$ 58,500	\$ 40,500	\$ 20,000	\$ 13,500	\$ 434,621
RSO (1)	-	3,000	3,000	3,000	3,000	3,000	-	-	6,000	\$ 3,000	\$ 24,000	\$ -	\$ -	\$ -	\$ -	\$ 24,000
	\$ 57,480	\$ 47,060	\$ 45,160	\$ 44,540	\$ 55,110	\$ 61,966	\$ 58,378	\$ 18,720	\$ 72,470	\$ 61,500	\$ 522,384	\$ 58,600	\$ 40,600	\$ 20,100	\$ 13,600	\$ 655,284
Cash Balance	\$ 191,600	\$ 334,340	\$ 383,690	\$ 405,190	\$ 426,390	\$ 424,354	\$ 430,326	\$ 423,046	\$ 384,896	\$ 323,396	\$ 323,396	\$ (58,600)	\$ (40,600)	\$ (20,100)	\$ (13,600)	\$ 190,496
(A) Assumes no sales July 1, 2015 through December 31, 2016																
(B) Assumes awards made in Spring 2016 will be honored through June 30, 2020.																

**University of Wyoming Alumni Association License Plate Program
 Proposed New Wyoming Community College Scholarships
 Ten Community College Transfer Scholarship
 As of November 17, 2014**

Appendix 4

Award	Academic Year	# Awards	Amount of Award	Total for Year	Cumulative
Apr-16	2016-17				
	1st Year	10	\$ 1,500	<u>\$ 15,000</u>	\$ 15,000
Apr-17	2017-18				
	1st year	10	\$ 1,500	15,000	
	2nd year	10	\$ 1,500	<u>15,000</u>	
				<u>30,000</u>	45,000
Apr-18	2018-19				
	1st year	10	\$ 1,500	15,000	
	2nd Year	10	\$ 1,500	15,000	
	3rd year	10	\$ 1,500	<u>15,000</u>	
				<u>45,000</u>	90,000
Apr-19	2019-20				
	1st year	10	\$ 1,500	15,000	
	2nd Year	10	\$ 1,500	15,000	
	3rd year	10	\$ 1,500	<u>15,000</u>	
				<u>45,000</u>	135,000
Apr-20	2020-21				
	1st year	10	\$ 1,500	15,000	
	2nd year	10	\$ 1,500	15,000	
	3rd Year	10	\$ 1,500	<u>15,000</u>	
				<u>45,000</u>	180,000
Apr-21	2021-22				
	1st year	0	\$ 1,500	-	
	2nd year	10	\$ 1,500	15,000	
	3rd year	10	\$ 1,500	<u>15,000</u>	
				<u>30,000</u>	210,000
Apr-22	2022-23				
	1st year	0	\$ 1,500	-	
	2nd year	0	\$ 1,500	-	
	3rd year	10	\$ 1,500	<u>15,000</u>	
				<u>15,000</u>	225,000
Apr-23	2023-24				
	1st year				
	2nd year				
	3rd year	0	\$ 1,500	-	225,000

The University of Wyoming
Board of Trustees' Report
January 15-16, 2015
Page 24

UW License Plate Scholarship Program														Appendix 5
Proforma Financials for Second Cycle 2017-2024														
As of November 17, 2014														
	(B)													
	Total													
	FY 2017	FY 2018	FY 2019	FY 2020	FY 2021	FY 2022	FY 2023	FY 2024	FY17 - FY24	FY 2025	FY 2026	FY 2027	FY 2028	FY17-FY28
Beginning Cash Balance	\$ 323,396	\$ 388,246	\$ 406,096	\$ 359,446	\$ 299,296	\$ 252,646	\$ 210,996	\$ 184,346	\$ 323,396	\$ 172,696	\$ 114,096	\$ 71,996	\$ 40,396	
Sales - # - (C)	2,000	1,500	800	600	600	500	500	500	7,000	-	-	-	-	7,000
Cumm. Sales	2,000	3,500	4,300	4,900	5,500	6,000	6,500	7,000	7,000					
Sales \$ - \$130 ea. (A)	\$ 260,000	\$ 195,000	\$ 104,000	\$ 78,000	\$ 78,000	\$ 65,000	\$ 65,000	\$ 65,000	\$ 910,000	\$ -	\$ -	\$ -	\$ -	\$ 910,000
Earnings, if any														
	\$ 260,000	\$ 195,000	\$ 104,000	\$ 78,000	\$ 78,000	\$ 65,000	\$ 65,000	\$ 65,000	\$ 910,000	\$ -	\$ -	\$ -	\$ -	\$ 910,000
Cumulative \$	\$ 260,000	\$ 455,000	\$ 559,000	\$ 637,000	\$ 715,000	\$ 780,000	\$ 845,000	\$ 910,000	\$ 910,000	\$ 910,000	\$ 910,000	\$ 910,000	\$ 910,000	
Distribution:														
State Fee - \$30 ea.	\$ 60,000	\$ 45,000	\$ 24,000	\$ 18,000	\$ 18,000	\$ 15,000	\$ 15,000	\$ 15,000	\$ 210,000	\$ -	\$ -	\$ -		\$ -
Misc	\$ 150	150	150	150	150	150	150	150	\$ 1,200	\$ 100	\$ 100	\$ 100	\$ 100	\$ 400
Scholarship Cycle 2	\$ 58,500	58,500	58,500	58,500	58,500	58,500	58,500	58,500	\$ 468,000	\$ 58,500	\$ 42,000	\$ 31,500	\$ 18,000	\$ 150,000
Scholarship Cycle 1	\$ 58,500	40,500	20,000	13,500	-	-	-	-	\$ 132,500					
Scholarships WYCC (D)	\$ 15,000	30,000	45,000	45,000	45,000	30,000	15,000	-	\$ 225,000					
RSO	\$ 3,000	3,000	3,000	3,000	3,000	3,000	3,000	3,000	\$ 24,000					
	\$ -	-	-	-	-	-	-	-	\$ -	\$ -	\$ -	\$ -		\$ -
	\$ 195,150	\$ 177,150	\$ 150,650	\$ 138,150	\$ 124,650	\$ 106,650	\$ 91,650	\$ 76,650	\$ 1,060,700	\$ 58,600	\$ 42,100	\$ 31,600	\$ 18,100	\$ 150,400
Net Rev over(under) Exp	\$ 64,850	\$ 17,850	\$ (46,650)	\$ (60,150)	\$ (46,650)	\$ (41,650)	\$ (26,650)	\$ (11,650)	\$ (150,700)	\$ (58,600)	\$ (42,100)	\$ (31,600)	\$ (18,100)	
Ending Cash Balance	\$ 388,246	\$ 406,096	\$ 359,446	\$ 299,296	\$ 252,646	\$ 210,996	\$ 184,346	\$ 172,696	\$ 172,696	\$ 114,096	\$ 71,996	\$ 40,396	\$ 22,296	\$ 22,296
(A) Assumes no increase. \$130 per plate with \$30 to the WYDOT and \$100 to scholarships.														
(B) Assumes awards made in Spring 2024 will be honored through June 30, 2028.														
(C) Sales of the plates for the new eight-year cycle would begin on July 1, 2016 effective January 1, 2017 and selection of the student recipients for second cycle financial aid would be made in April 2016. The awards would begin in the fall of 2016 in the 2016-17 academic year.														
(D) Assumes adding ten new 3-year awards to Wyoming Community College transfer students through FY 2021 to align with UW recruitment priority.														

AGENDA ITEM TITLE: **Discussion re: FLAC**, Miller

CHECK THE APPROPRIATE BOX(ES):

- Work Session
- Education Session
- Information Item
- Other Specify:

BACKGROUND AND POLICY CONTEXT OF ISSUE:

Trustee Committees

Audit and Fiscal Integrity

For a period of time, it was the practice (not in regulation) that the Board used a set of standing committees to consider topics that would be brought to the full Board for consideration. The Board has moved away from doing that. However, one of those committees, the Fiscal and Legal Affairs Committee (FLAC), continued given the requirement in the Board's By-Laws that there be an audit committee.

Section 7-2 of the Board's By-Laws (attached) establishes an Audit and Fiscal Integrity Committee. Given the foregoing, it might be clearer if the FLAC simply became the Audit and Fiscal Integrity Committee per the By-Laws and performed the duties specified therein.

Budget

The Board has had several discussions about budget policy. It might be useful for the Board to consider establishing a Committee that would be the point on developing recommendations for budget policy. It would be separate from the Audit and Fiscal Integrity Committee, which performs a different function. This new committee could help inform the system that will be established.

EXCERPT FROM THE BY-LAWS
OF THE
UNIVERSITY OF WYOMING BOARD OF TRUSTEES

Section 7-2. AUDIT AND FISCAL INTEGRITY COMMITTEE

The Audit and Fiscal Integrity Committee is responsible for assuring that the University's organizational culture, capabilities, systems and processes are appropriate to protect the financial health and the reputation of the University in all audit-related areas enumerated below. Specifically the Audit and Fiscal Integrity Committee will review the financial reporting processes, the system of internal controls, the audit process, and the process for monitoring and ensuring compliance with financial laws and regulations. It will monitor the University's internal and external auditor's findings.

The Audit and Fiscal Integrity Committee shall consist of not less than three members of the Trustees, preferably those with financial or business expertise. Appointments shall be made by the President of the Board of Trustees at the annual meeting of the Trustees for terms of three years. Appointments to fill a vacancy for the unexpired term may be made by the President of the Board at any time and announced at the next regular Board meeting following the appointment. In the initial appointments, at least one member shall be appointed to terms of one, two and three years respectively.

In discharging their duties hereunder, the members are entitled to rely on information, opinions, reports or statements, including financial statements and other financial data, if prepared or presented by: officers or employees of the University whom the committee members reasonably believe to be reliable and competent in the matters presented; and legal counsel, public accountants or other persons as to matters the committee members reasonably believe are within the person's professional or expert competence.

I. Investments

Review the management of invested University funds, including University endowment funds and University operating funds, subject to the following conditions:

- a. The President of the University shall be the administrative officer of the invested University funds, and may assign to a designee such duties as may be described in a written delegation of authority.
- b. With Board approval, the Committee may employ the services of an agent, such as the University of Wyoming Foundation, an investment adviser, and/or manager(s), and may give due consideration to such advice.
- c. The Committee, or the Board-approved agent, shall place the securities of said Funds in custody of a custodian bank or other fully insured custodial

institution, which shall have the right and privilege of holding the securities in a street name or in a name of such nominee as it may choose.

- d. Each year the Committee shall review the agent's investment policy, asset allocation strategy and other endowment management philosophies, such as earnings distribution policies. The Committee shall receive and review an annual report on portfolio performance and other relevant endowment management metrics.

II. Financial Reporting Process

- a. Ensure that the external auditors communicate all matters required by their professional standards to the Committee and review significant accounting and reporting issues, including recent professional and regulatory pronouncements in order to understand their impact on the University's financial statements.
- b. Review the annual financial statements, including management's discussion and analysis, and determine if they are complete and consistent with information known to committee members.
- c. Be satisfied that all regulatory compliance matters have been considered in the preparation of the financial statements.
- d. Review significant financial risks and exposures and the plans to minimize such risks.
- e. Review, with the University's legal counsel, any legal matters that could have a significant impact on the financial statements.

III. System of Internal Control

- a. Ensure that management is setting the appropriate tone in communicating the importance of internal control and ensure that individuals have an understanding of their roles and responsibilities.
- b. Receive and review reports from internal and external auditors regarding the quality of institutional internal control systems and determine whether management has implemented internal control recommendations made by internal and external auditors.
- c. Ensure that internal and external auditors keep the Committee informed about fraud, illegal acts, deficiencies in internal control and ensure that an appropriate process exists for the receipt, retention and treatment of

complaints, including anonymous complaints, regarding accounting, internal controls and auditing matters.

- d. Evaluate the extent to which internal and external auditors review computer systems and applications, the security of such systems and applications, and the contingency plan for processing financial information in the event of a systems breakdown.

IV. Audit Process – External

- a. Following appropriate consultation with management, recommend to the Board the selection and retention of the external audit firm. Approve external auditor's fees.
- b. Review and approve the external auditor's proposed scope and approach.
- c. Review and confirm the external auditor's assertion of their independence in accordance with professional standards.
- d. Review the performance of the external auditors and recommend the appointment or discharge of the external auditors.
- e. Meet with the external auditors, the Internal Auditor, and management in separate executive sessions to discuss any matters that the Committee or these entities believe should be discussed privately. Mediate any disagreements between management and external auditors regarding financial reporting.
- f. Review with management and external auditors the results of the annual external audit, including any difficulties encountered, restrictions placed on the scope of the external auditor's activities, access to requested information and any significant disagreements with management.
- g. Review and approve any engagement of the external auditors for non-audit related consulting activities.

V. Audit Process – Internal

- a. Review and ensure that the University has the appropriate structure, staffing, and capability to effectively carry out the internal audit responsibilities.
- b. Review and concur in the appointment, compensation, replacement, reassignment, or dismissal of the Internal Auditor.

- c. Review and confirm the priorities and key action plans of the audit function. Receive and review internal audit reports from the Internal Auditor regarding results of the internal audit program.
- d. Ensure there is regular, independent communication between the Committee and the Internal Auditor and ensure there are no unjustified restrictions or limitations on internal audit programs.

VI. Compliance with Laws & Regulations

- a. Review the findings of any significant examinations by financial regulatory agencies and review management's corrective action plans. Ensure that action plans are implemented to the satisfaction of the regulatory agencies.

VII. Other Responsibilities

- a. Ensure that significant findings and recommendations made by the internal and external auditors are received, discussed and acted upon in an appropriate and timely manner.
- b. Regularly update the Board of Trustees about Committee activities, any key internal or external audit issues and make appropriate recommendations for Board action.
- c. Review and update this By-Law and receive approval of changes from the Board of Trustees.

Committee of the Whole: REGULAR BUSINESS
Board of Trustees Committee Reports

CHECK THE APPROPRIATE BOX(ES):

- Work Session
- Education Session
- Information Item
- Other Specify: Committee of the Whole (Regular Business)

A. **Fiscal and Legal Affairs Committee (Mai)**
Committee Chair

B. **Alumni Board**
Board Liaison

C. **Foundation Board**
Trustees Marsh and Bostrom, Board Liaisons

D. **Haub School of Environment and Natural Resources Board**
Trustee Davis, Board Liaison

E. **Energy Resources Council (ERC)**
Trustee True, Board Liaison

1. Committee of the Whole- CONSENT AGENDA
Approval of Contracts and Grants, Gern

CHECK THE APPROPRIATE BOX(ES):

- Work Session
- Education Session
- Information Item
- Other Specify: Committee of the Whole (Consent Agenda)

October 2014

Sponsor	Amount	Principal Investigator (PI)	Co-PI	Dept	Description
America View, Inc.	\$ 24,900	Sivanpillai, Ramesh		Wyoming Geographic Information Science Center	StateView Program Development and Operations for the State of Wyoming
American Colloid Company	\$ 163,740	Beck, Jeffrey		Ecosystem Science & Management	Greater Sage-Grouse Migration Ecology and Response to Bentonite Mining in the Big Horn Basin, WY
American Society of Plant Taxonomists	\$ 5,500	Brown, Gregory		Botany	Operational Support
BASF Corporation	\$ 17,500	Kniss, Andrew R		Plant Sciences	Weed Science Research in Agronomic Crops
BASF Corporation	\$ 3,000	Stump, William L		Plant Sciences	Pest Management for the Crops of the High Plains
Chevron	\$ 100,000	Morrow, Norman R		Chemical/Petroleum Engineering	Improved Understanding of Low Salinity Effects on Chevron Reservoir Cores
Cold Spring Harbor	\$ 463,107	Stayton, Mark M		Molecular Biology	TRPGR: Maize Cell Genomics: Resources for Visualizing Promoter Activity and Protein Dynamics using Fluorescent Protein Lines; and Participant Support and Imaging software

Sponsor	Amount	Principal Investigator (PI)	Co-PI	Dept	Description
Colorado, University of, Denver	\$ 21,855	Leonard, Jacqueline		Science & Mathematics Teaching Center	E-Learning Communities for Academic Language Learning in Math and Science
Disney Worldwide Conservation	\$ 25,000	Goheen, Jacob		Zoology	The Hirola Conservation Program
FMC Corporation	\$ 20,500	Kniss, Andrew R		Plant Sciences	Weed Control in Agronomic Crops
Monsanto Company	\$ 16,000	Kniss, Andrew R		Plant Sciences	Weed Management Research and Education
National Institute of Standards	\$ 20,000	Cloud, Karen Lynette		Science & Mathematics Teaching Center	Project Manager for Lesson Plan Development for the NIST Summer Institute for Middle School Science Teachers and Teacher Recruiter for Teachers of Native American Students for the Institute
Southern California, University of	\$ 30,700	Chen, Po		Geology/ Geophysics	Improving Earth Structure Model in California Through Full-3D Tomography
Syngenta Crop Protection, LLC	\$ 10,000	Kniss, Andrew R		Plant Sciences	Agronomic Crop Research
The Wildlife Society	\$ 1,000	Murphy, Melanie		Ecosystem Science & Management	Effects of Climate Change on Prairie Wetland Ecosystem Services and Amphibian Persistence (Charlotte Gabrielsen fellowship)

Sponsor	Amount	Principal Investigator (PI)	Co-PI	Dept	Description
US Department of Agriculture, Animal and Plant Health Inspection Service (APHIS)	\$ 51,425	Latchininsky, Alexandre		Ecosystem Science & Management	Wyoming Cooperative Agriculture Pest Survey
US Department of Agriculture, Forest Service (FS)	\$ 11,776	Keinath, Douglas A		Wyoming Natural Diversity Database	Medicine Bow National Forest Amphibian Monitoring Project
US Department of Agriculture, National Resources Conservation (NRC)	\$ 5,000	Brown, Donna		Ag Dean	Student Engagement Networking Drive (SEND) Program
US Department of Agriculture, National Resources Conservation (NRC)	\$ 15,000	Tanaka, John		Ecosystem Science & Management	Sustainable Rangelands Roundtable: Future Directions of Usable Science for Rangeland Sustainability Workshop
US Department of Agriculture, Risk Management Agency (RMA)	\$ 293,000	Hewlett, John P		Ag Economics	2014 Targeted States Program: Risk Management Education Addressing Beginning Retiring/Transitioning, and Other Farmers and Ranchers and Interested Individuals in Wyoming 2014-15

Sponsor	Amount	Principal Investigator (PI)	Co-PI	Dept	Description
US Department of Defense, Army	\$ 38,150	Riley, Eloise		Cooperative Extension Services	Operation Military Kids
US Department of Education	\$ 297,034	Hesco, Paul		Student Educational Opportunity	Upward Bound Math and Science Project 14-15; and Exempt
US Department of Education	\$ 126,889	Carter, Joanna		Student Financial Aid	Pell Grant 14-15
US Department of Education	\$ 58,125	Carter, Joanna		Student Financial Aid	Student Educational Opportunity Grant 14-15
US Department of Energy	\$ 1,474,026	Parkinson, Bruce		VP Research	EPSCoR: Atmosphere to Grid: Addressing Barriers to Energy Conversion and Delivery
US Department of Health and Human Services, (NIH)	\$ 600,000	Stewart, Larry Ray		Manufacturing Works	Manufacturing Works: The Wyoming Manufacturing Extension Partnership (FY15)
US Department of Interior, Bureau of Land Management (BLM)	\$ 10,000	Hufford, Kristina		Ecosystem Science & Management	WY Seed Collection
US Department of Interior, Bureau of Land Management (BLM)	\$ 25,000	Hartman, Ronald		Botany	Increasing and Improving Floristic Information and Data for BLM Lands in Wyoming

Sponsor	Amount	Principal Investigator (PI)	Co-PI	Dept	Description
US Department of Interior, Bureau of Land Management (BLM)	\$ 25,000	Graf, Nicholas		Wyoming Geographic Information Science Center	Wyoming Sage-Grouse Core Area Disturbance Digitization
US Department of Interior, Fish and Wildlife Service (FWS)	\$ 47,169	Heidel, Bonnie		Wyoming Natural Diversity Database	FE Warren Air Force Base Threatened and Endangered Species
US Department of Interior, National Park Service (NPS)	\$ 10,903	Tronstad, Lusha		Wyoming Natural Diversity Database	2015 Aquatic Invertebrate Monitoring at Agate Fossil Beds National Monument
US Department of Interior, National Park Service (NPS)	\$ 19,508	Schmidt, Lawrence O		Library	Digital Herbariums for Bighorn Canyon NRA, Fort Union Trading Post NHS, Knife River Indian Village NHS, and Theodore Roosevelt NP
US Department of Justice, Children and Families of the Incarcerated, BOJS	\$ 59,658	Butler, Steven William		Wyoming Survey & Analysis Center	FY14 State Justice Statistics Program for Statistical Analysis Centers: Wyoming Department of Corrections Performance Measurement System
US Environmental Protection Agency	\$ 5,000	Harlow, Henry		Zoology	How do Polar Bears cope with summer conditions altered by climate change

Sponsor	Amount	Principal Investigator (PI)	Co-PI	Dept	Description
US National Science Foundation (NSF)	\$ 65,080	Riebe, Clifford		Geology/ Geophysics	Collaborative Research: Spatial Variability in Eroded Sediment Size and Geomorphic Processes Inferred From Detrital Thermochronometry and Cosmogenic Nuclides
Various Sponsors	\$ 91	Kline, Jill		WY Small Business Development Center	Program Income for FY 14 SBDC SBA
Various Sponsors	\$ 20,180	Stewart, Larry Ray		Manufacturing Works	Program Income - Manufacturing Works: The Wyoming Manufacturing Extension Partnership (FY 15)
Various Sponsors	\$ 5,466	Root-Elledge, Sandra Lee		Wyoming Institute for Disabilities	Fee Book Income
Various Sponsors	\$ 2,361	Peterson, Eric M.	Schamber, Robin	Cooperative Extension Services	Various Sponsored Sublette County Extension Programs
Various Sponsors	\$ 410	Clarke, Pamela		School of Nursing	Various Nursing Schools Program Development
West Virginia University	\$ 73,934	Bell, David		Chemical/ Petroleum Engineering	UW China Clean Energ Research - Bell, David; and Fan, Maohong
Wyoming Arts Council	\$ 3,139	Wilson, Margaret Ann		Theatre/Dance	Snowy Range Summer Dance Festival 2014-15

Sponsor	Amount	Principal Investigator (PI)	Co-PI	Dept	Description
Wyoming Arts Council	\$ 5,112	Przygocki, James T.		Music	University of Wyoming String Project (2014-15)
Wyoming Business Council	\$ 133,887	Kline, Jill		WY Small Business Development Center	Wyoming Procurement Technical Assistance Center (PTAC)
Wyoming Business Council	\$ 806,478	Kline, Jill		WY Small Business Development Center	Wyoming Small Business Development Center (SBDC); and Region 1, 2, 3, 4, 4A, 5, 6 and Unrestricted WBDC 2014-2015
Wyoming Business Council	\$ 608,853	Stewart, Larry Ray		Manufacturing Works	Manufacturing Works FY 2014-2016
Wyoming Department of Education	\$ 10,100	Root-Elledge, Sandra Lee		Wyoming Institute for Disabilities	Wyoming Educational Intervention Assessment Team (WEIAT) Clinics Assistive Technology Assessments
Wyoming Department of Environmental Quality	\$ 3,000,000	Farrell, Maggie		Library	AML Funds for Library Acquisitions

Sponsor	Amount	Principal Investigator (PI)	Co-PI	Dept	Description
Wyoming Department of Transportation	\$ 204,584	Kunkel, Paul W		TransPark	FY15 WYDOT/FTA 5311 Statewide Rural Public Transit Funding for Albany County Transportation Authority (ACTA); and Administration, Maintenance, and Section 5311 Statewide Rural Public Transit Operating Funding
Wyoming Department of Transportation	\$ 964,778	Kunkel, Paul W		TransPark	FY15 WYDOT/FTA Section 5311 Statewide Rural Public Transit Operating Funding; and Administration and Maintenance
Wyoming Military Department	\$ 189,000	Weathermon, Rick		Anthropology	Phase II Archaeological Testing and Reevaluation of Archaeological Sites in the Training Areas of Camp Guernsey, Wyoming
Wyoming State Parks and Cultural Resources	\$ 12,500	Walker, Danny		Anthropology	South Pass City Historical Site: Interns for Artifact Curation
Wyoming Weed and Pest Council	\$ 21,500	Mealor, Brian		Plant Sciences	Weed Science Research and Extension
Wyoming Wildlife and Natural Resource Trust	\$ 31,474	Beck, Jeffrey		Ecosystem Science & Management	Effectiveness of Existing Greater Sage-Grouse Conservation Measures in Wyoming: Trends in Passerine Sagebrush Obligates

Sponsor	Amount	Principal Investigator (PI)	Co-PI	Dept	Description
Wyoming Wildlife and Natural Resource Trust	\$ 38,815	Beck, Jeffrey		Ecosystem Science & Management	Effectiveness of Existing Greater Sage-Grouse Conservation Measures in Wyoming: Microhabitat Quality in Core Areas
Wyoming Wildlife and Natural Resource Trust	\$ 47,860	Beck, Jeffrey		Ecosystem Science & Management	Analysis of the Energy Disturbance Thresholds Associated with Greater Sage-Grouse Lek Persistence: Implications for the Wyoming Core Areas Management Strategy

Sponsored Programs

TOTAL 10/2014 \$10,341,067

**Total From
 7/2014** \$12,977,621

**Total From
 8/2014** \$12,616,411

**Total From
 9/2014** \$15,525,386

**Total Year to
 Date** \$51,460,484

Sponsor	Amount	Principal Investigator (PI)	Co-PI	Dept	Description
US Department of Education	\$ 24,937,916	Carter, Joanna		Student Financial Aid	Direct Student Loan 14-15

**Total
 Institutional
 Awards** \$24,937,916
Grand Total \$76,398,400

November 2014

Sponsor	Amount	Principal Investigator (PI)	Co-PI	Dept	Description
Academy of Applied Science	\$ 7,800	Lyford, Mark		Botany	Wyoming-Eastern Colorado Junior Science and Humanities Symposium 2014-2015
American Physical Society	\$ 19,841	Dale, Daniel A		Physics/Astronomy	Recruiting More Physics Education Majors at the University of Wyoming
Autodesk	\$ 96,604	Fertig, Ray		Mechanical Engineering	Size Effects in Modeling of Woven Composites
BASF Corporation	\$ 3,000	Stump, William		Plant Sciences	Pest Management for the Crops of the High Plains
Campus Compact	\$ 800	Olsen, Erin		Wyoming Union	Campus Election Engagement Project
Dayton Research, University of	\$ 178,574	Naughton, Jonathan		Mechanical Engineering	Developing an Approach for Assessing Effectiveness of Viscous Drag Reduction Approaches
Duke University	\$ 5,000	Reverand, Cedric D.		English	18th Century Life Journal
Gillette, City of	\$ 15,000	Templeton, Cherie K		Wyoming Survey & Analysis Center	Gillette Drug Free Communities Grant Evaluation
Inberg-Miller Engineers	\$ 3,305	Carr, Bradley		Geology/Geophysics	Geophysical Borehole Logging, Rock Springs, Wyoming

Sponsor	Amount	Principal Investigator (PI)	Co-PI	Dept	Description
Kansas State University	\$ 3,726	Despain, Johnathan Carvel		Cooperative Extension Services	2015 Military Connected Youth Local/Regional Program Support
Koch Companies Public Sector LLC	\$ 50,985	Considine, Timothy J		Economics/Finance	Economics of Environmental Regulation of Petroleum Coke Markets
Marathon Oil Company	\$ 10,000	Hild, Angela		Ecosystem Science & Management	Shrub Diversity Following Russian Olive Control
Minnesota Department of Natural Resources	\$ 5,000	Cook, Craig S		Ecosystem Science & Management	Carbon and Nitrogen Stable Isotope Ratios on Hair or Tissue Samples
National Association of State Departments of Agriculture Research Foundation	\$ 8,100	Edwards, Jeffrey		Cooperative Extension Services	Pesticide Safety Education Program 2014-2015
National Geographic Society	\$ 56,676	Webster, Gerald		Geography/Recreation	Wyoming Geographic Alliance 2014-2015
Nevada, Las Vegas, University of	\$ 74,451	Hidecker, Mary	Cooley, Josephine	Speech Pathology	Expansion of the Communication Function Classification System (CFCS) to Adolescents and Adults with Cerebral Palsy
Oklahoma, University of	\$ 24,000	Anatchkova, Bistra		Wyoming Survey & Analysis Center	Evaluating the Oklahoma Smokers Helpline 14-15

Sponsor	Amount	Principal Investigator (PI)	Co-PI	Dept	Description
Syngenta Crop Protection, LLC	\$ 1,350	Nachtman, Jerry		Ag Experiment Station	Wheat Variety Trials
US Department of Agriculture, Animal and Plant Health Inspection Service (APHIS)	\$ 17,500	Peck, Dannele Elaine		Ag Economics	Small Ruminant Movements During Production and Marketing Activities in the Intermountain West
US Department of Agriculture, Forest Service (FS)	\$ 4,878	Murphy, Melanie		Ecosystem Science & Management	Region 2 Sensitive Amphibian Species: Boreal Toad eDNA Pilot Study
US Department of Agriculture, Forest Service (FS)	\$ 20,000	Kauffman, Matthew		Zoology	Enhancement of the Educational Materials Available to Resource Managers and the Public in Relation to Beetle Kill and Elk
US Department of Agriculture, Forest Service Farm Service Agency (FSA)	\$ 14,677	Whipple, Glen		Cooperative Extension Services	2014 Farm Bill Producer Education
US Department of Agriculture, National Institute of Food and Agriculture (NIFA)	\$ 200,000	Tanaka, John		Ecosystem Science & Management	Discovering our Nation's Rangelands

Sponsor	Amount	Principal Investigator (PI)	Co-PI	Dept	Description
US Department of Agriculture, National Institute of Food and Agriculture (NIFA)	\$ 66,850	Schell, Scott		Ecosystem Science & Management	Crop Protection and Pest Management Extension Implementation Area
US Department of Agriculture, Natural Resources Conservation Service (NRCS)	\$ 15,882	Cotton, Scott Eugene		Cooperative Extension Services	New Ground: Demonstrating Innovative Ground Cover Recovery Practices
US Department of Agriculture, Natural Resources Conservation Service (NRCS)	\$ 75,000	Hansen, Kristiana Marie		Ag Economics	Implementing a Market-Based Conservation Exchange in Wyoming
US Department of Commerce National Oceanic and Atmospheric Administration (NOAA)	\$ 16,736	Murphy, Shane		Atmospheric Science	Quantifying Methane and Volatile Organic Compounds Emissions from Oil and Gas Extraction Sources-Phase II
US Department of Defense, Office of Naval Research (ONR)	\$ 97,623	Legleiter, Carl		Geography/Recreation	Remote sensing of rivers

Sponsor	Amount	Principal Investigator (PI)	Co-PI	Dept	Description
US Department of Education	\$ 131,918	Carter, Joanna		Student Financial Aid	Pell Grant 14-15
US Department of Education	\$ 70,013	Root-Elledge, Sandra Lee		Wyoming Institute for Disabilities	Wyoming State Plan for Assistive Technology 2014-16
US Department of Energy	\$ 490,000	Fan, Maohong		Chemical/Petroleum Engineering	Catalytic PRB Coal-CO2 Gasification for Fuels and Chemicals with Two Different Types of Syngas and Negative or Low CO2 Emissions
US Department of Health and Human Services, National Institutes of Health (NIH)	\$ 775,379	Ren, Jun		Health Science Dean	Wyoming IDEa Networks for Biomedical Research Excellence (INBRE) - Bridge Funding
US Department of Health and Human Services, National Institutes of Health (NIH)	\$ 360,825	Ward, Naomi		Molecular Biology	FY14-15 INBRE Bioinformatics Core
US Department of Health and Human Services, National Institutes of Health (NIH)	\$ 353,750	Seville, Robert		School-Extended Studies	FY14-15 INBRE Outreach Core

Sponsor	Amount	Principal Investigator (PI)	Co-PI	Dept	Description
US Department of Health and Human Services, National Institutes of Health (NIH)	\$ 106,067	Seville, Robert		Casper College	FY14-15 INBRE UW Casper College
US Department of Health and Human Services, National Institutes of Health (NIH)	\$ 240,000	Seville, Robert		School-Extended Studies	FY14-15 INBRE Subcontracts
US Department of Health and Human Services, National Institutes of Health (NIH)	\$ 70,750	Cherrington, Brian		Zoology	FY14-15 INBRE Subproject 1
US Department of Health and Human Services, National Institutes of Health (NIH)	\$ 49,525	Gatlin, Jesse		Molecular Biology	Fy14-15 INBRE Subproject 2
US Department of Health and Human Services, National Institutes of Health (NIH)	\$ 70,750	Gigley, Jason		Molecular Biology	FY14-15 INBRE Subproject 3

Sponsor	Amount	Principal Investigator (PI)	Co-PI	Dept	Description
US Department of Health and Human Services, National Institutes of Health (NIH)	\$ 70,750	Johnson, Patrick		Chemical/Petroleum Engineering	FY14-15 INBRE Subproject 4
US Department of Health and Human Services, National Institutes of Health (NIH)	\$ 70,750	Li, Dongmei		Chemical/Petroleum Engineering	FY14-15 INBRE Subproject 5
US Department of Health and Human Services, National Institutes of Health (NIH)	\$ 70,750	Navratil, Amy		Zoology	FY14-15 INBRE Subproject 6
US Department of Health and Human Services, National Institutes of Health (NIH)	\$ 70,750	Oakey, John		Chemical/Petroleum Engineering	FY14-15 INBRE Subproject 7
US Department of Health and Human Services, National Institutes of Health (NIH)	\$ 70,750	Varga, Krisztina		Chemistry	FY14-15 INBRE Subproject 8

Sponsor	Amount	Principal Investigator (PI)	Co-PI	Dept	Description
US Department of the Interior, Bureau of Land Management (BLM)	\$ 39,500	Keinath, Douglas		Wyoming Natural Diversity Database	WY Special Status Species Data Collection
US Department of the Interior, Bureau of Land Management (BLM)	\$ 9,000	Beauvais, Gary P		Wyoming Natural Diversity Database	Gopher Snake Study
US Department of the Interior, Bureau of Land Management (BLM)	\$ 35,000	Beauvais, Gary P		Wyoming Natural Diversity Database	Database Design
US Department of the Interior, Bureau of Land Management (BLM)	\$ 25,000	Jones, George P		Wyoming Natural Diversity Database	Special Status Plant Species and Plant Ecological Assessments in Wyoming
US Department of the Interior, Bureau of Land Management (BLM)	\$ 50,000	Taylor, David T		Ag Economics	Socioeconomic Reports for BLM Casper Field Office and BLM Arizona Colorado River District

Sponsor	Amount	Principal Investigator (PI)	Co-PI	Dept	Description
US Department of the Interior, Bureau of Land Management (BLM)	\$ 20,000	Surovell, Todd		Anthropology	Analysis of Hanson Site and Other Related Folsom Aged Assemblages
US Department of the Interior, Bureau of Land Management (BLM)	\$ 13,000	Walker, Danny		Anthropology	Archeological Collections Curation and Management
US Department of the Interior, Bureau of Reclamation (BOR)	\$ 10,000	Walker, Danny		Anthropology	R11AP40081 - Inventory for Collections and Long Term Curation of Archeological Collections with the University of Wyoming Archeological Repository
US Department of the Interior, Fish and Wildlife Service (FWS)	\$ 50,000	Rahel, Frank		Zoology	Wyoming Toad Recovery Program
US Department of the Interior, National Park Service (NPS)	\$ 238,103	Korfanta, Nicole		Institute of Environmental and Natural Resources	Natural Resource Condition Assessments: Fort Laramie National Historic Site, Agate Fossil Beds National Monument, Scotts Bluff National Monument, and Badlands National Park (UWY-199)

Sponsor	Amount	Principal Investigator (PI)	Co-PI	Dept	Description
US Environmental Protection Agency	\$ 90,083	Jones, George P		Wyoming Natural Diversity Database	Level 2 Assessments and Wetland Profiles, Red Desert/Great Divide and Little Snake/Muddy Creek Areas, Wyoming
US National Aeronautics & Space Administration (NASA)	\$ 482,944	Johnson, Paul E		Physics/Astronomy	Wyoming NASA Space Grant Community College REU: Research Experience for Community College Undergraduates
US National Science Foundation (NSF)	\$ 250,498	Kobulnicky, Henry A		Physics/Astronomy	Collaborative Research: Citizen Science Assists a Novel Measurement of Mass-Loss Rates for Massive Stars
US Small Business Administration	\$ 90,909	Jordan, Gregory		WY Sm Bus Dev Ctr	Federal and State Technology Partnership Program (FAST) 2014-15
Utah State University	\$ 12,047	Islam, Md		Plant Sciences	Economic and Environmental Sustainability of Irrigated Grass-Legume Mixtures
Various Sponsors	\$ 1,536	Kline, Jill		WY Sm Bus Dev Ctr	Market Research Center Program Income
Various Sponsors	\$ 9,695	Stewart, Larry Ray		Manufacturing Works	Program Income - Manufacturing Works: The Wyoming Manufacturing Extension Partnership (FY 15)

Sponsor	Amount	Principal Investigator (PI)	Co-PI	Dept	Description
Various Sponsors	\$ 1,850	Williams, Karen		Family/Consumer Sci	FCS support
Various Sponsors	\$ 1,723	Root-Elledge, Sandra Lee		Wyoming Inst for Disabilities	Fee Book Income
Various Sponsors	\$ 4,000	Peterson, Eric M.	Schamber, Robin	Cooperative Ext Serv	Sublette County Extension Programs
Various Sponsors	\$ 1,227	Ford, Stephen		Animal Science	Fetal Programming
Various Sponsors	\$ 2,044	Redder, Alan		Wyoming Natural Diversity Database	Database Management
Various Sponsors	\$ 2,500	McDonald, David		Zoology	Microsatellite DNA Analysis of Black Bears
Various Sponsors	\$ 4,484	Reiners, William A		Wyoming Geographic Information Science Center	WYGISC Equipment Recovery
Washington, University of	\$ 6,552	Robinson, Timothy		WWAMI	University of Washington Medical Student Counseling FY15
Wisconsin- Milwaukee, University of	\$ 27,224	Rush, Leslie		Secondary Education	Evaluating the Conditions of English Teacher Preparation into the 21st Century: Examining the English Language Arts Methods Course

Sponsor	Amount	Principal Investigator (PI)	Co-PI	Dept	Description
Wyoming Department of Agriculture	\$ 64,055	Schumaker, Brant		Veterinary Science	Development and Validation of a Polymerase Chain Reaction Assay for Diagnosis of Bovine Brucellosis
Wyoming Department of Agriculture	\$ 45,830	Connett, John		Ecosystem Science & Management	School Integrated Pest Management Training in Wyoming through a Science-Based Expert-to-Expert Approach
Wyoming Department of Agriculture	\$ 53,000	Edwards, Jeffrey		Cooperative Extension Services	Pesticide Safety Education Program
Wyoming Game and Fish Department	\$ 100,000	Hamerlinck, Jeffrey		Wyoming Geographic Information Science Center	Nonfed Portion of DDCT Software Application Development
Wyoming Game and Fish Department	\$ 2,500	Beck, Jeffrey		Ecosystem Science & Management	Sage-Grouse Histrionics
Wyoming Game and Fish Department	\$ 190,317	Keinath, Douglas		Wyoming Natural Diversity Database	Clarifying Exposure Risk of Small Mammals to Energy Development in Wyoming
Wyoming Game and Fish Department	\$ 360,000	Beauvais, Gary P		Wyoming Natural Diversity Database	Essential Information on the Biological Diversity of Wyoming

Sponsor	Amount	Principal Investigator (PI)	Co-PI	Dept	Description
Wyoming Game and Fish Department	\$ 4,000	Hild, Angela		Ecosystem Science & Management	Shrub Seedlings for Restoration of Russian Olive Removal Sites
Wyoming Governor's Office	\$ 165,000	Hamerlinck, Jeffrey		Wyoming Geographic Info Sci Ctr	Natural Resource and Energy Explorer Web Application Development (NREX)
Wyoming Humanities Council	\$ 5,000	Garrison, Jean		Intl Studies	General Support for speaker series and graduate assistant
Wyoming Livestock Board	\$ 218,000	Adamovicz, Jeffrey		Veterinary Science	Brucellosis Diagnostic Testing 2014-2016
Wyoming Office of Homeland Security	\$ 19,804	Ahmed, Mohamed		Civil Engineering	Wyoming Commodity Flow Study

Sponsored Programs

TOTAL 11/2014 \$6,872,510

Total From 7/2014 \$12,977,621

Total From 8/2014 \$12,616,411

Total From 9/2014 \$15,525,386

Total From

10/2014 \$10,341,067

Total Year to Date \$58,332,994

Sponsor	Amount	Principal Investigator (PI)	Co-PI	Dept	Description
US Department of Education	\$ 24,937,916	Carter, Joanna		Student Financial Aid	Direct Student Loan 14-15
US Department of Education	\$ 18,817,502	Carter, Joanna		Student Financial Aid	Direct Student Loan 14-15

Total Insitutional Awards

\$43,755,418

Grand Total

\$102,088,412

December 2014

Sponsor	Amount	Principal Investigator (PI)	Co-PI	Dept	Description
American Society of Plant Taxonomists	\$ 5,400	Brown, Gregory		Botany	Operational Support
Aramco Services Company	\$ 2,190,000	Piri, Mohammad		School Enrgy Resource-Research	Fundamental Multi-scale Rock-Fluid Characterization
Association of University Centers on Disabilities	\$ 15,773	DiRienzo, Sara Marie		Wyoming Inst for Disabilities	Diversity and Inclusion Fellowship to Develop a UCEDD Network Blueprint
Battelle Memorial Institute	\$ 30,000	Liu, Xiaohong		Atmospheric Science	Wildfires and Regional Climate Variability, Mechanisms, Modeling and Prediction
Colorado State University	\$ 25,000	Guiberson, Mark Michael		Speech Pathology	High Plains Intermountain Center for Agricultural Health and Safety: Digital Graphic Novella: Hearing Health for Spanish-speaking Agricultural Workers
Disney Worldwide Conservation	\$ 1,500	Goheen, Jacob		Zoology	The Hirola Conservation Program

Sponsor	Amount	Principal Investigator (PI)	Co-PI	Dept	Description
Experiment.com	\$ 925	Freng, Scott A		Psychology	Exploring the Two-Dimensional Model of Prejudice: A GIS Study of Attitudes Towards African Americans
Foundation for North American Wild Sheep	\$ 7,500	Monteith, Kevin		Zoology	Harvest records: Implications for Understanding Factors Affecting Horn and Antler Size in Ungulates (California Chapter)
Matrix Research	\$ 15,000	Ackerman, John F		Chemical/Petroleum Engineering	Integrated Turbine Electric Power Generation via Advanced Magnetohydrodynamics
Muley Fanatic Foundation	\$ 60,000	Monteith, Kevin		Zoology	Nutritional Carrying Capacity and Factors Limiting Population Growth of Mule Deer in the Wyoming Range
US Department of Agriculture, Animal and Plant Health Inspection Service (APHIS)	\$ 52,500	Peck, Dannele Elaine		Ag Economics	Small Ruminant Movements During Production and Marketing Activities in the Intermountain West
US Department of Defense, Office of Naval Research (ONR)	\$ 33,000	Mavriplis, Dimitri J		Mechanical Engineering	Efficient and Accurate Overset Mesh Methodology for Dynamic Ship/Aircraft Interface Simulations

Sponsor	Amount	Principal Investigator (PI)	Co-PI	Dept	Description
US Department of Education	\$ 39,977	Carter, Joanna		Student Financial Aid	Pell Grant 14-15
US Department of Health and Human Services, Centers for Medicare and Medicaid Services (CMMS)	\$ 10,674	Steiner, Joseph		Health Science Dean	Meaningful Use Funds To Improve Patient Care (Financial Reward for Converting to Electronic Health Records)
US National Science Foundation (NSF)	\$ 6,000	Hall, Robert		Zoology	Participant Support Leaky Rivers: Nutrient Retention and Productivity in Rocky Mountain Streams Under Alternative Stable States
US National Science Foundation (NSF)	\$ 294,038	Frost, Carol D		Geology/Geophysics	Intergovernmental Personnel Act Assignment Agreement
Various Sponsors	\$ 170	Kline, Jill		WY Sm Bus Dev Ctr	Vehicle Mileage Reimbursement
Various Sponsors	\$ 25,650	Stewart, Larry Ray		Manufacturing Works	Program Income - Manufacturing Works: The Wyoming Manufacturing Extension Partnership (FY 15)
Various Sponsors	\$ 1,774	Kline, Jill		WY Sm Bus Dev Ctr	Vehicle Management

Sponsor	Amount	Principal Investigator (PI)	Co-PI	Dept	Description
Various Sponsors	\$ 1,472	MacLean, William		Wyoming Inst for Disabilities	UAP Core Projects
Various Sponsors	\$ 3,218	Root-Elledge, Sandra Lee		Wyoming Inst for Disabilities	UAP Techinal Assistance
Various Sponsors	\$ 4,072	Redder, Alan		Wyoming Natural Diversity Database	Database Management
Various Sponsors	\$ 3,000	McDonald, David		Zoology	Microsatellite DNA Analysis of Black Bears
Virginia Polytech Institute	\$ 2,492	Norton, Jay	Arnould, Eric & Norton, Urszula & Peck, Dannele & Press, Melea	Ecosystem Science & Management	Conservation agriculture production systems in eastern Uganda and western Kenya
Wyoming Arts Council	\$ 5,605	Markley, Benjamin D		Music	2015 UW Jazz Festival
Wyoming Arts Council	\$ 5,784	Selting, Leigh		Theatre/Dance	Grants to Organizations FY2015: Department of Theatre & Dance Multiple Projects
Wyoming Community Foundation	\$ 100,000	Feldman, Laura		Wyoming Survey & Analysis Center	Kids Count

Sponsor	Amount	Principal Investigator (PI)	Co-PI	Dept	Description
Wyoming Department of Agriculture	\$ 19,592	Stam, Barton R		Ecosystem Science & Management	Rangeland Health Assessment Program (RHAP): Hay Creek Land & Cattle Ranch Rangeland Monitoring
Wyoming Department of Agriculture	\$ 20,000	Stam, Barton R		Ecosystem Science & Management	Rangeland Health Assessment Program (RHAP): Arapahoe Creek Common Allotment Rangeland Monitoring
Wyoming Department of Health	\$ 78,347	Hardesty, Canyon Leigh		Wyoming Inst for Disabilities	Wyoming Vision Collaborative
Wyoming Department of Transportation	\$ 19,072	Ksaibati, Khaled		Civil Engineering	A Monitoring Program for Wyoming County Paved Roads
Wyoming Department of Transportation	\$ 112,384	Kauffman, Matthew		Zoology	Developing a Database and Web Viewing Tool for Ungulate Migrations in Wyoming (Phase 2)
Wyoming Department of Transportation	\$ 65,975	Tanner Eisenhauer, Jennifer		Civil Engineering	Evaluating the Effectiveness of Fly Ashes to Mitigate ASR and Using Recycled Concrete Aggregate in New Construction
Wyoming Department of Transportation	\$ 200,000	Ksaibati, Khaled		Civil Engineering	Wyoming Rural Road Safety; and NonFed Portion

Sponsor	Amount	Principal Investigator (PI)	Co-PI	Dept	Description
Wyoming Game and Fish Department	\$ 16,451	Beck, Jeffrey		Ecosystem Science & Management	Greater Sage-Grouse Migration Behavior and Male Survival
Wyoming Governor's Office	\$ 20,000	DiRienzo, Sara Marie		Wyoming Inst for Disabilities	Think College Wyoming

Sponsored Programs

TOTAL 12/2014 \$3,492,343

**Total From
7/2014** \$12,977,621
**Total From
8/2014** \$12,616,411
**Total From
9/2014** \$15,525,386
**Total From
10/2014** \$10,341,067
**Total From
11/2014** \$6,872,510
**Total Year to
Date** \$61,825,338

Sponsor	Amount	Principal Investigator (PI)	Co-PI	Dept	Description
US Department of Education	\$ 24,937,916	Carter, Joanna		Student Financial Aid	Direct Student Loan 14-15
US Department of Education	\$ 18,817,502	Carter, Joanna		Student Financial Aid	Direct Student Loan 14-15

Total Insitutional Awards \$43,755,418

Grand Total \$105,580,756

2. Committee of the Whole- CONSENT AGENDA

Approval of Personnel, Jones

CHECK THE APPROPRIATE BOX(ES):

- Work Session
 Education Session
 Information Item
 Other Specify: Committee of the Whole (Consent Agenda)

A. Items for Action Recommended by the President

APPOINTMENTS

1. Faculty

It is recommended to the Trustees of the University of Wyoming that the following faculty appointments be approved as indicated.

College of Health Sciences

<u>Name</u>	<u>Rank</u>	<u>Salary</u>	<u>Appointment Begins</u>
-------------	-------------	---------------	---------------------------

School of Nursing

Gilman-Kehrer, Esther	Clinical Assistant Professor	\$70,008/AY	08/26/2014
------------------------------	------------------------------	-------------	------------

Esther Gilman-Kehrer received a B.S. (1986) in Nursing, a M.S. (1998) in Community Health from the University of Wyoming, and a D.N.P. (2012) from the University of Colorado. Dr. Gilman-Kehrer has been an Assistant Lecturer at the University of Wyoming since 2012.

2. Academic Professionals

It is recommended to the Trustees of the University of Wyoming that the following extended-term-track academic professional appointments be approved as indicated.

College of Agriculture and Natural Resources

<u>Name</u>	<u>Rank</u>	<u>Salary</u>	<u>Appointment Begins</u>
-------------	-------------	---------------	---------------------------

Cooperative Extension Service

Buchholz (Madden), Stacy	Assistant Extension Educator	\$45,192/FY	07/01/2014
---------------------------------	------------------------------	-------------	------------

Stacy Buchholz received a B.A. (2007) In Criminal Justice and Women's Studies and an MPA (2013) from the University of Wyoming. Ms. Buchholz has been an Assistant Extension Educator since 2012.

Department of Molecular Biology

Willford, John Assistant Lecturer \$50,004/AY 08/26/2014 to 06/30/2015
John Willford received a B.S. (2005) in Microbiology and a Ph.D. (2008) in Animal and Veterinary Science from the University of Wyoming. Dr. Willford has been the Coordinator of the Microbiology Instructional labs at the University of Wyoming since 2009.

College of Health Sciences

Name Rank Salary Appointment Begins
School of Nursing

Hager, Mary Sue Associate Lecturer \$59,904/AY 09/01/2014
Mary Sue Hager received a B.S.N. (1992) and a M.S., F.N.P. (1997) from the University of Wyoming. Ms. Hager has been a Family Nurse Practitioner at Platte River Family Practice since 2011 and an Associate Lecturer, non-extended term, at the University of Wyoming since 2009.

Hall, Marilyn P. Assistant Lecturer \$55,008/AY 09/01/2014
Marylin Hall received an LPN (1974) from Rio Hondo College, an AND (1980) from San Diego City College, a BSN (1988) from Consortium CA State Universities-Dominguez Hills, and a MSN (2012) from Walden University. Ms. Hall has been an Assistant Lecturer, non-extended term, at the University of Wyoming since 2013.

Rubio-Wallace, Sherrie D. Associate Lecturer \$62,748/AY 09/01/2014
Sherrie Rubio-Wallace received a BSN (1990) from Villanova University and a M.S. (2000) in Nursing from the University of Wyoming. Ms. Rubio-Wallace has been an Associate Lecturer, non-extended term, at the University of Wyoming since 2012.

Williams, Linda G. Associate Lecturer \$60,600/AY 09/01/2014 to 06/30/2015
Linda Williams received a B.S. (1981) and a M.S. (1990) in Nursing from the University of Wyoming. Ms. Williams has been an Associate Lecturer, non-extended term, at the University of Wyoming since 2004.

Wislowski, Ann M Assistant Lecturer \$61,008/AY 09/01/2014
Ann Wislowski received a B.A. (1997) in Russian from Pennsylvania State University, a B.S.N. (2006) and a M.S.N. (2010) from the University of Pennsylvania. Ms. Wislowski has been a Nurse Practitioner at Jeanes Hospital since 2012.

CHANGES IN APPOINTMENTS

1. Administrators

It is recommended to the Trustees of the University of Wyoming that the changes in appointments for the following full-time Administrators be approved as indicated.

Academic Affairs

Name Rank Salary Appointment Begins
Hild, Angela L. Interim Associate Vice President \$170,004/FY 11/03/2014

Dr. Ann Hild will serve as Interim Associate Vice President for Graduate Studies. Dr. Hild continues as a tenured professor in the Department of Ecosystem Science and Management.

GLOSSARY OF PERSONNEL TERMS

Academic Professional

Person other than faculty, engaged primarily in activities that extend and support the teaching, research, extension, and service missions of the University. There are four categories of academic professional: Extension Educators, Lecturers, Research Scientists, Post-Doctoral Associates. Individuals belonging to any of the first three categories can hold extended-term-track appointments under certain conditions.

Academic-Year (AY) Appointments

Appointments in which the regular period of employment includes the fall and spring semesters (nine months) of each year, with no accrual of vacation leave. Most faculty members and academic professionals hold AY appointments. AY employees typically receive their nine-month salaries and benefits spread out over the 12 months of each calendar year.

Adjunct Faculty

An adjunct appointment is the appointment of an individual to an academic unit that recognizes special discipline-related expertise but carries no financial obligation per se. Adjunct appointments can include qualified non-academic personnel or faculty with other academic affiliations. Adjunct appointments carry no rights to remuneration, tenure, or employment-related privileges and are normally for three years, with renewal possible.

Archives Faculty

This special faculty designation is reserved for archivists of the American Heritage Center. Archivists are responsible for acquiring original resource material to support academic research and teaching, organizing the material physically and intellectually, and teaching faculty, students and others to use these materials. There are three archivist ranks: Assistant Archivist, Associate Archivist, Archivist.

Assistant Professor

Indicates tenure-track appointments of individuals who hold the terminal degree in their discipline. This is the usual entry-level faculty rank.

Associate Professor

In addition to the qualifications of an Assistant Professor, Associate Professors have established a strong reputation in scholarship and teaching. Generally, faculty hired as Assistant Professors are promoted to the rank of Associate Professor at the time tenure is granted.

Clinical Faculty

Clinical faculty appointments allow experts in health-related fields to contribute to the training of UW students in allied disciplines. Clinical appointments are for at most one year at a time and carry no rights to tenure or extended terms. Clinical faculty members may be salaried members of the UW faculty, in which case their reappointment is subject to annual performance reviews. There are also adjunct clinical faculty appointments, which typically involve health-care professionals whose normal employment is outside the university. Adjunct clinical appointments carry no financial commitment from the University.

Emeritus Faculty

Tenured faculty who retire after long and distinguished service are eligible for emeritus status upon their retirement. The designation is honorary and carries no necessary commitment of space or remunerative employment. By analogy, extended-term academic professionals may be eligible for emeritus status upon retirement. (Emeritus=masculine, emerita=feminine, emeriti=plural)

Extended-Term Appointment

Academic professionals who have successfully completed probationary terms (usually six years) may receive six-year appointments called extended-term appointments. The term also applies to certain librarians and archivists who hold faculty status. These employees are eligible for extended-term appointments after five-year probationary periods. Extended terms for these employees are five years in length. Academic professionals, librarians, and archivists who are in the probationary period are on the extended-term-track.

Extension Educator

These academic professionals provide non-credit education to off-campus clientele through UW's Cooperative Extension Service. There are three ranks of Extension Educators: Assistant Extension Educator, Associate Extension Educator, Senior Extension Educator. All Extension Educators are in the College of Agriculture.

Faculty

Members of the permanent faculty include tenured or tenure-track Assistant Professors, Associate Professors, and Professors. Also included are tenure-track individuals who hold the rank of Instructor while completing their terminal degrees. Librarians and archivists also hold faculty status. They are eligible for extended terms instead of tenure.

Fiscal-Year (FY) Appointments

Appointments in which the regular period of employment is the entire calendar year, with accrual of annual vacation leave. Faculty members who hold administrative positions with summer responsibilities often have FY appointments for the duration of their administrative terms.

Full-Time Equivalent (FTE)

A measure of the time commitment expected of an employee or a set of employees. For example, two full-time employees or four half-time employees constitute 2.0 FTE.

Instructor

Tenure-track faculty member who does not yet hold the terminal degree in the appropriate field. UW requires verification of degrees in the form of official transcripts. UW does not grant tenure to faculty members who hold Instructor status at the time of the decision.

Leave of Absence Without Pay

Academic and administrative personnel may request leaves without pay for periods normally not in excess of one year, for purposes consistent with the professional enhancement of the employee and the advancement of the University's stature.

Lecturer

A category of academic professional involved largely in classroom instruction. Lecturers may be appointed to three ranks: Assistant Lecturer, Associate Lecturer, Senior Lecturer.

Library Faculty

This faculty designation applies to employees of the University Libraries. There are three ranks of library faculty: Assistant Librarian, Associate Librarian, Librarian.

Part-Time Employee

Any employee holding less than a full-time equivalent position (FTE less than 1.0).

Post-Doctoral Associate

Post-Docs are doctorally qualified academic professionals seeking greater professional development and research investigation, before obtaining permanent employment. Post-Doctoral appointments are temporary.

Probationary Faculty

This term refers to tenure-track faculty members who are working toward tenure and to academic professionals, library faculty, and archive faculty who are working toward extended-term contracts. The probationary term for academic professionals is generally six years, with yearly reviews and re-appointments. For librarians and archivists, it is five years. Faculty members who are on tenure-track appointments typically undergo the review for tenure in the sixth year of employment.

Professional Development Leave

Extended-term academic professionals who have completed six years of service at the University are eligible for professional development leave. The purpose of development leave is to enhance performance, to conduct special studies, or in some other way to enhance an individual's ability to contribute to the University. Development leaves can be granted with or without pay, are the prerogative of the academic unit in which the academic professional is located, and are generally similar to sabbatical leaves for faculty.

Professor

In addition to the qualification of an Associate Professor, "full" Professors have attained wide recognition in their professional fields for scholarship or other creative activity and have gained recognition for superior teaching and service.

Research Professor

Person with demonstrated superior capacity for research contributions, who is employed solely on external funds, and who holds a terminal degree. These appointments are made only at the Professor level and for not more than one year at a time. They are renewable.

Research Scientist

An academic professional whose primary responsibility is to conduct research. There are three ranks for Research Scientists: Assistant Research Scientist, Associate Research Scientist, Research Scientist.

Review Year

Year in which a reappointment review occurs for probationary employees. Normally, tenure-track faculty members undergo mandatory reappointment reviews in their first, second, and fourth years, with optional reviews in the third and fifth years. A review for the tenure decision occurs no later than the sixth year. An explanatory flow chart appears at the end of this glossary. In some cases employees start with credit toward a tenure or extended-term decision, based on their previous experience. In these cases the review year is the number of years of service at UW plus the number of years of credit.

Sabbatical Leave

Sabbatical leave may be granted to any tenured member of the faculty for the purposes of increasing professional competence and usefulness to the University. A minimum of six years service at the University must precede each period of sabbatical leave, although no right accrues automatically through lapse of time. Sabbatical leaves are normally granted for either a half year (full pay) or a full year (60% of salary). A faculty member who fails to return to the University after a sabbatical leave must repay the amount of compensation received from the University during the sabbatical. Faculty members may not use sabbatical leaves to pursue degrees.

Temporary Appointment

A short-term appointment without rights to tenure or extended term. Most temporary appointments are for one semester or one academic year.

Tenure-Track Appointment

Indicates a probationary faculty appointment prior to the award of tenure. Tenure-track positions generally require six years to tenure, but fewer years may be required based upon level of previous experience and accomplishments.

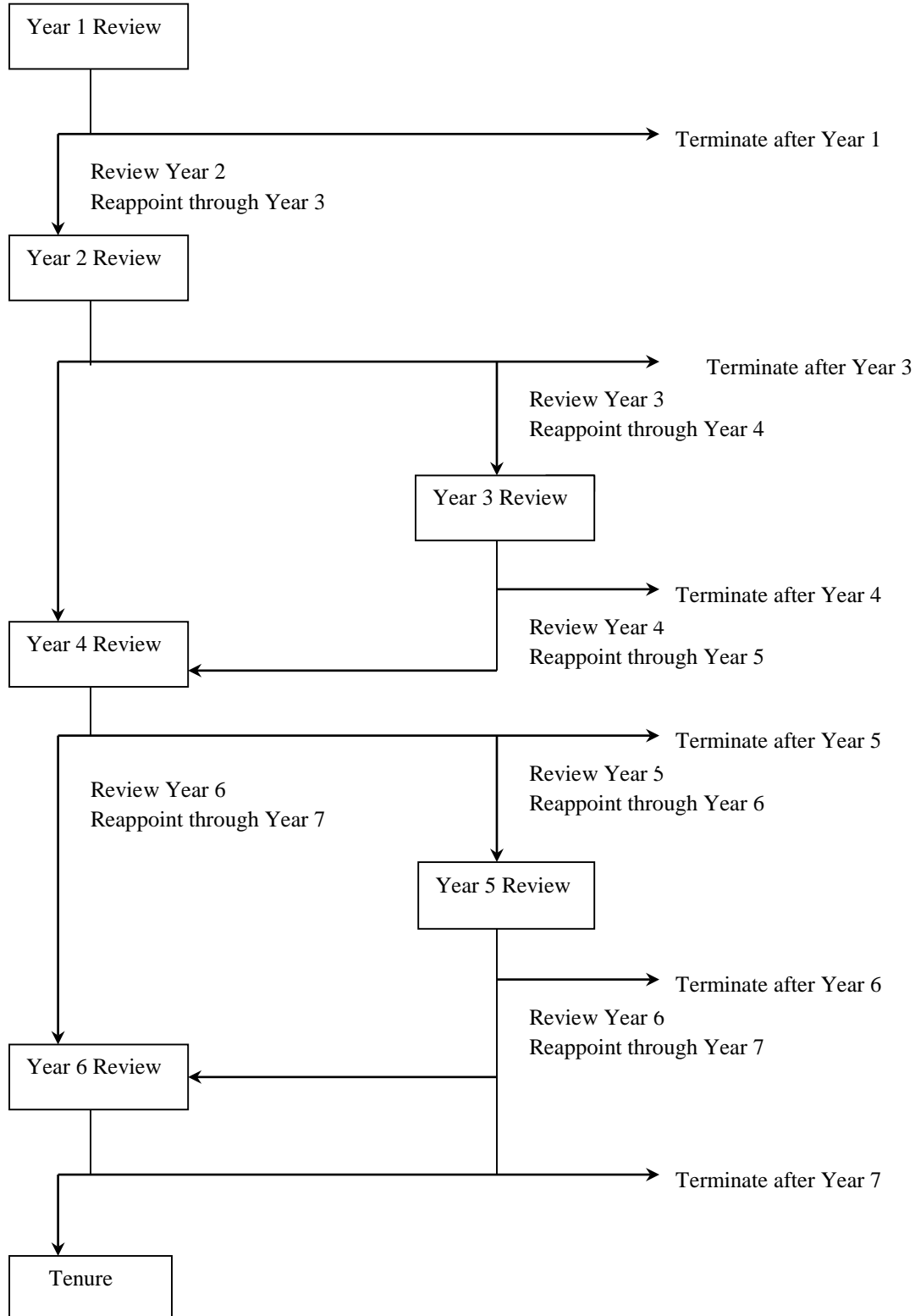
Terminal Degree

Typically the highest earned degree in a field of study. Examples include the Ph.D. (a variety of fields), the M.D. (medicine), the Ed.D. (education), M.F.A. (fine arts), M.Arch. (architecture), and J.D. (law).

Visiting Appointment

Indicates a non-permanent, non-tenure-track faculty appointment. Most visiting appointments are for one year.

FLOW CHART FOR FACULTY REAPPOINTMENTS



B. Items for Information

The changes in appointments and reappointments listed below are for the information of members of the Board of Trustees.

CHANGES IN APPOINTMENTS

1. Administrators

College of Engineering and Applied Science

<u>Name</u>	<u>Rank</u>	<u>Salary</u>	<u>Appointment Begins</u>
-------------	-------------	---------------	---------------------------

Dean's Office

Geerts, Bart	Associate Dean	\$108,288/AY	11/01/2014
---------------------	----------------	--------------	------------

Dr. Geerts will serve as Associate Dean for College Advancement. He will continue as a tenured professor in the Department of Atmospheric Science.

3. Committee of the Whole- CONSENT AGENDA

Approval of Revisions to UW Regulations

- Approval of Changes to UW Regulation 8-1
- Approval of Changes to UW Regulation 3-225

CHECK THE APPROPRIATE BOX(ES):

- Work Session
- Education Session
- Information Item
- Other Specify: Committee of the Whole (Consent Agenda)

Approval of Changes to UW Regulation 8-1

BACKGROUND AND POLICY CONTEXT OF ISSUE:

The President proposes modifications to UW Regulation 8-1 for the Board's consideration.

The proposed changes to this Regulation involve one minor clarification that transcripts are not released until applicable fees have been paid by the student and changes to the section relating to the resident tuition appeals process. Currently, the Director of Admissions handles both the initial resident classification and any student appeals to resident classification. Consistent with models from other Universities, the proposed changes would bifurcate the process so that the Director of Admissions makes the initial classification, but the Registrar handles the appeals process. This enhances the integrity of the process by allowing for a separate office to conduct the appeals hearing than the office that made the original initial classification.

Prior Related Board Discussions/Actions:

The Board adopted UW Regulation 8-1 on July 17, 2008 and made revisions to this Regulation on November 18, 2010 and November 14, 2014.

WHY THIS ITEM IS BEFORE THE BOARD:

UW Regulation 1-101 requires that any modification to UW Regulations must be approved by the Board.

ACTION REQUIRED AT THIS BOARD MEETING:

Board approval or disapproval of the modifications to the Regulations.

PRESIDENT'S RECOMMENDATION:

The President recommends approval.

UW REGULATION 8-1 Students

I. ADMISSION

Admission and programs of the University of Wyoming are offered to all eligible people without regard to race, gender, religion, color, national origin, disability, age, protected veteran status, sexual orientation, gender identity, genetic information, creed, ancestry, political belief, or any other applicable protected category. Requirements for admission to the University shall be established by regulations of the University. The Director of Admissions, through the Vice President for Student Affairs, is responsible for the admission of students. Admission of graduate students must also be approved by the faculty of an applicable graduate program.

II. FEES

Student tuition fees, and charges (Fees) shall be established by the Trustees, and shall be published by the University. All Fees are payable in advance, and no student shall be admitted to classes until Fees have been paid or a deferred payment plan has been established. Payment must be received by the University before any transcripts will be released~~before academic credit is awarded for any course~~. In accordance with the University refund policy, if a student formally withdraws from the University, the University shall refund tuition, minus any late fees.

III. STUDENT CLASSIFICATION FOR FEE PURPOSES

Individuals who qualify as Wyoming Residents shall pay the in-state tuition rate, as established by the Board of Trustees. All other individuals shall pay the out-of-state tuition rate, as established by the Board of Trustees. For the purposes of determining whether a student qualifies for in-state or out of state tuition, the following guidelines apply:

- A. Residing in Wyoming primarily as a student will not support a claim for resident status. The following students are considered Wyoming residents:
 1. Individuals who are financial dependents or under the age of 24 with a parent, guardian or spouse who lives in the State of Wyoming.
 2. Graduates of a Wyoming high school.
 3. Active Wyoming National Guard members and U.S. Armed Forces members stationed in Wyoming, and their dependents.

4. Graduate students with University-funded fellowships.
5. Wyoming residents temporarily absent from the State due to military service, attendance at an educational institution, or other type of documented temporary sojourn.
6. Individuals who have been awarded resident tuition status at a Wyoming Community College and who attend the University within one year of leaving the Wyoming Community College.
7. The spouse or financial dependent of an individual who is determined to be a Wyoming resident pursuant to this Regulation.
8. Individuals with a permanent home in Wyoming. To determine if a permanent Wyoming home has been established, a variety of factors are considered including evidence that any former home has been abandoned, full-time employment in Wyoming for one continuous year, ownership of home or property in Wyoming, one year of continual presence in Wyoming, former Wyoming residency and maintaining state ties, reliance on Wyoming resources for full financial support, Wyoming vehicle registration, Wyoming address on most recent federal income tax return, a valid Wyoming driver's license, and Wyoming voter registration. No one factor determines residence status.

B. The following students are considered non-residents:

1. Individuals who do not qualify under Section A above; and
2. Individuals who are not U.S. citizens or permanent residents except as provided by Section A2—above.

IV. APPEALING TUITION DETERMINATIONS

Students may appeal their classification as a resident or a non-resident through the following process:

- A. A student assigned a non-resident classification may submit a request for reclassification to the ~~Registrar or designee~~Director of Admissions. The student must submit the request and accompanying documentation on or before the first day of classes.

- B. If the ~~Registrar or designee~~Director, does not grant reclassification, the student may appeal that decision to the Residence Classification Committee within twenty (20) calendar days of the date of the ~~Registrar's or designee's~~Director's decision. The Committee is chaired by the ~~Registrar~~Director of Admissions ~~or designee~~, who is a nonvoting member, and consists of three voting members appointed by the President ~~or designee~~. In addition to reviewing student residency classification appeals, the Committee also has the authority to:
1. Render interpretations and rulings at the request of the ~~Registrar~~Director of Admissions; and
 2. Consider University policies in the area of residence classification and make recommendations to the Board of Trustees.
- C. Individuals may be reclassified for the following term when facts indicate that a change in residency has occurred since the time of original residence classification ~~or since their most recent appeal~~. Reclassification as an in-state student will not be applied retroactively to previous terms.

V. REDUCED TUITION

The following non-resident individuals shall receive reduced tuition rates calculated at one hundred fifty percent (150%) of resident tuition:

- A. Graduates of the University;
- B. Spouses of graduates of the University; and
- C. Children of graduates of the University.

VI. SCHOLARSHIPS

Scholarships, other than those from external sources, are established by the Trustees or by Statute. A listing of such scholarships shall be published on the University Student Financial Aid website.

VII. DISMISSAL

Dismissal of students shall be governed by UW Regulation 8-30 and/or UW Regulation 8-229.

VIII. STUDENT EMPLOYMENT

The University may provide work opportunities for students to assist in meeting costs associated with progress toward their educational objectives and educational benefits. See the University Employee Handbook for rules, policies, and procedures governing student employees.

IX. STUDENT ORGANIZATIONS

The Associated Students of the University of Wyoming (ASUW) is hereby recognized as an official organization of the University (see UW Regulation 8-249). All other campus student organizations must apply annually for official University recognition in accordance with the policies and procedures outlined in UW Regulation 8-234.

X. STUDENT PUBLICATIONS

All student publications supported by University facilities or funds shall be approved by, and subject to the direction of, the University Student Media Board. The Board shall report to the President of the University (see UW Regulation 8-38).

XI. ADMINISTRATION

The Vice President for Student Affairs shall administer this Regulation.

Source:
Trustee Regulation VIII; adopted 7/17/08 Board of Trustees meeting
Revisions adopted 11/18/10 Board of Trustees meeting

Approval of Changes to UW Regulation 3-225

BACKGROUND AND POLICY CONTEXT OF ISSUE:

The President proposes modifications to UW Regulation 3-255 (University of Wyoming Motor Vehicle License Plate Program) for the Board's consideration. The Wyoming Legislature approved the University of Wyoming Motor Vehicle License Plate Program (Wyoming Statutes 21-17-118 and 31-2-219) for one license plate cycle beginning January 1, 2008 and ending December 31, 2016. In 2012, the Legislature approved the Program for subsequent license plate cycles. The second cycle will begin January 1, 2017 and end December 31, 2024. UW Regulation 3-255 establishes the policy for administration of this Program.

From the beginning of the program through September 30, 2014, 6,242 license plates have been sold, generating \$624,200 for student scholarships. Fees collected and remitted to the Wyoming Department of Transportation total \$187,260. By the end of the first cycle, over 90 UW students will have received financial aid from this program and a total of \$24,000 will have been distributed to multiple University Recognized Student Organizations (RSOs). After all of the first cycle awards are fulfilled, the account is projected to have a surplus of \$190,496.

Given the financial success of the program, the UW Alumni Association proposes that ten additional scholarships of \$1,500 each be awarded to Wyoming community college transfer students per year for up to three years or through the date of graduation, whichever occurs first, through 2021. The Alumni Association also recommends that each year, a minimum of one scholarship be offered to a student from each Wyoming community college. The cost of the proposed new scholarships will be covered by the first cycle surplus and the additional sales expected in the second cycle (an estimated additional surplus of \$22,296).

Prior Related Board Discussions/Actions:

The Board adopted UW Regulation 3-255 on July 17, 2008 and approved changes to the regulation on September 12, 2014.

WHY THIS ITEM IS BEFORE THE BOARD:

UW Regulation 1-101 requires that any modification to UW Regulations must be approved by the Board.

ACTION REQUIRED AT THIS BOARD MEETING:

Board approval or disapproval of the modifications to the Regulations.

PRESIDENT'S RECOMMENDATION:

The President recommends approval.

UW REGULATION 3-255
University of Wyoming Motor Vehicle License Plate Program

I. PURPOSE

To establish a policy for administration of the University of Wyoming Motor Vehicle License Plate Program authorized by Wyoming Statutes and the Board of Trustees.

II. GENERAL INFORMATION

The University of Wyoming Motor Vehicle License Plate Program was created by Wyoming Statutes 21-17-118 and 31-2-219, which authorizes the Board of Trustees of the University to establish and promulgate the rules for a license plate program to be administered by the University and to provide for a student support and student financial aid fund for students at the University.

III. ADMINISTRATION

The Vice President of Student Affairs, or designee, shall administer this Regulation.

IV. APPLICATIONS

Owners of vehicles who desire to register or renew the registration of a vehicle in Wyoming effective on or after January 1, 2008, may submit an application to the University through its Division of Student Affairs for a University of Wyoming Motor Vehicle License Plate. The application shall be accompanied by a fee of one hundred and thirty dollars (\$130.00). Upon receipt of a completed application and payment of the required fee to the University, the University shall issue a statement of eligibility for the University of Wyoming license plate to the Wyoming Department of Transportation. Application for renewals must be made at least thirty (30) days before registration of the vehicle with the State of Wyoming.

V. REVENUES

- A. The fees collected under this Regulation, shall be deposited into the University of Wyoming Motor Vehicle License Plate account. Any fees, gifts, contributions, donations or other monies donated to this account shall be used exclusively for student financial aid and for projects and programs that directly support students at the University.
- B. All expenditures made from this account shall be in compliance with this Regulation.

VI. SCHOLARSHIPS

To the extent revenues are available from license plate fees, the following scholarships shall be awarded annually based upon academic merit and involvement. The awards shall be made by the Division of Student Affairs through its Office of Alumni Relations in coordination with the Office of Student Financial Aid:

A. ~~A~~Ten scholarships of \$1,500 each per year for up to three years or through the date of graduation, whichever occurs first. New scholarships will be offered through 2021.

1. Ten scholarships will be offered to Wyoming community college transfer students.

2. At a minimum, one scholarship will be offered to a qualifying student from each Wyoming community college each year.

B. Nine four-year scholarships of \$1,500 each per year.

1. One to an incoming freshman from each of the following six geographic areas:

- a. District I: Park, Big Horn, Washakie, Hot Springs, and Fremont Counties
- b. District II: Sheridan, Johnson, Campbell, Crook, Weston, and Converse Counties
- c. District III: Lincoln, Sweetwater, Uinta, Sublette, and Teton Counties
- d. District IV: Natrona, Albany, and Carbon Counties
- e. District V: Laramie, Goshen, Platte, and Niobrara Counties
- f. District VI: Out-of-state (non-Wyoming residents)

2. Two scholarships to non-traditional students

3. One scholarship to the grandchild of a UW graduate

BC. Three Scholarships of \$1,500 each per year, subject to annual renewal

1. One scholarship to a fifth- or sixth-year undergraduate student

2. One scholarship to a student who is pursuing a second bachelor's degree

3. One scholarship to a student enrolled in an Outreach Credit degree program

~~C.D.~~ One-year award of \$3,000

1. One award to a Recognized Student Organization (RSO) seeking student programming funds for a project or projects to benefit the campus or community. Selection will be made by a committee comprised of representatives of ASUW student government and Wyo-Gold, the student alumni association.

Source:

University Regulation 255, Revision 1; adopted 7/17/08 Board of Trustees meeting
Revisions adopted 9/12/14 Board of Trustees meeting

4. Committee of the Whole- CONSENT AGENDA

Degree Changes, Jones

- New Minor
- Revision to Minor
- New Degree
- Degree Change

CHECK THE APPROPRIATE BOX(ES):

- Work Session
 Education Session
 Information Item
 Other Specify: Committee of the Whole (Consent Agenda)

New Minor

BACKGROUND AND POLICY CONTEXT OF ISSUE:

The College of Arts and Sciences has requested a new Photography Minor in Art. This minor will allow students who do not major in Visual Arts to pursue their interest in Fin Arts based photography. The complimentary courses will provide background and context to a non-Art Major who is interested in photography.

The department proposes six mandated hours of upper division classes and three credit hours of either Printmaking I (a 3000-level course) or History of Photography. This minor will mirror the ones currently offered for each of the other disciplines in Visual Arts, and this minor will not conflict with the COJO Photography Minor. No additional resources will be required.

This Minor request has been reviewed and approved by the department head and faculty, the Dean of the College of Arts and Sciences, Academic Affairs with input from the Academic Deans' Council, and the President.

PRIOR RELATED BOARD DISCUSSIONS/ACTIONS:

None.

WHY THIS ITEM IS BEFORE THE BOARD:

The Board of Trustees are required to approve new minors.

ARGUMENTS IN SUPPORT:

The participating faculty, the College dean, the Academic Deans' Council, and the Office of Academic Affairs carefully considered the proposal and support the plan.

ARGUMENTS AGAINST:

None.

ACTION REQUIRED AT THIS MEETING:

We seek Board approval of this new minor. It appears on the consent agenda in this month's report

PRESIDENT'S RECOMMENDATION:

The President recommends approval.

Revision to a Minor

BACKGROUND AND POLICY CONTEXT OF ISSUE:

The College of Arts and Sciences has requested a revision to the Art History Minor. The proposed changes to this minor downsize the number of required credit hours from 24 to 21 and eliminates six Studio Art electives, requiring instead 9 hours of Art History electives at the 3000-4000 level. The proposed change will require an Art major to take four additional art history courses to earn a minor in Art History. Non-Art majors can add the minor because no studio art is required.

The reason behind the proposed change is that non-art majors have had difficulty enrolling in studio courses to earn the minor due to the courses being reserved for art majors. Getting rid of the studio component will make the minor more compatible with other academic majors such as History and English.

This revision to the Minor has been reviewed and approved by the department head and faculty, the Dean of the College of Arts and Sciences, Academic Affairs with input from the Academic Deans' Council, and the President.

PRIOR RELATED BOARD DISCUSSIONS/ACTIONS:

None.

WHY THIS ITEM IS BEFORE THE BOARD:

The Board of Trustees are required to approve changes to a Minor.

ARGUMENTS IN SUPPORT:

The participating faculty, the College dean, the Academic Deans' Council, and the Office of Academic Affairs carefully considered the proposal and support the plan.

ARGUMENTS AGAINST:

None.

ACTION REQUIRED AT THIS MEETING:

We seek Board approval of this new minor. It appears on the consent agenda in this month's report

PRESIDENT'S RECOMMENDATION:

The President recommends approval.

New Degree

BACKGROUND AND POLICY CONTEXT OF ISSUE:

The College of Arts and Sciences has requested a new Bachelor of Arts in Art History. The Art Department has had a large increase in number of majors which need Art History in their background. This major would provide students with a course of study that will provide depth and breadth in the history of art. Students will develop a broad understanding of world art, study the art of western and other global cultures, and be introduced to the historiography and professional practices related to the field. This proposed major would have a strong vocational application.

Course credits will be divided into three main areas of study: Core Art History Courses, Upper Division Art History Courses, and Lower Division Studio Courses. Since this proposed major will reside in the Department of Art, there will be no need for additional administrative support and the major will be easily managed within current administrative responsibilities already in place in the department. Upon approval of the BA in Art History, the Department faculty propose to suspend the Art History Concentration.

This new degree request has been reviewed and approved by the department head and faculty, the Dean of the College of Arts and Sciences, Academic Affairs with input from the Academic Deans' Council, and the President.

PRIOR RELATED BOARD DISCUSSIONS/ACTIONS:

None.

WHY THIS ITEM IS BEFORE THE BOARD:

The Board of Trustees are required to approve new degree programs.

ARGUMENTS IN SUPPORT:

The participating faculty, the College dean, the Academic Deans' Council, and the Office of Academic Affairs carefully considered the proposal and support the plan.

ARGUMENTS AGAINST:

None.

ACTION REQUIRED AT THIS MEETING:

We seek Board approval of this new minor. It appears on the consent agenda in this month's report

PRESIDENT'S RECOMMENDATION:

The President recommends approval.

Degree Change

BACKGROUND AND POLICY CONTEXT OF ISSUE:

The College of Arts and Sciences has requested a change from a Bachelor of Arts degree in Psychology to a Bachelor of Science in Psychology. This change comes about to strengthen the science-based core of the Psychology major requirements and learning outcomes. The change in requirements for a Bachelor of Science degree in Psychology is to add a 3-4 credit STEM class to complement the existing science and quantitative reasoning requirements. This additional requirement, in the context of the new USP and A&S College requirements, will pose no burden on students with respect to timely graduation and will strengthen their training in Psychology.

This new degree request has been reviewed and approved by the department head and faculty, the Dean of the College of Arts and Sciences, Academic Affairs with input from the Academic Deans' Council, and the President.

PRIOR RELATED BOARD DISCUSSIONS/ACTIONS:

None.

WHY THIS ITEM IS BEFORE THE BOARD:

The Board of Trustees are required to approve changes to Degree programs.

ARGUMENTS IN SUPPORT:

The participating faculty, the College dean, the Academic Deans' Council, and the Office of Academic Affairs carefully considered the proposal and support the plan.

ARGUMENTS AGAINST:

None.

ACTION REQUIRED AT THIS MEETING:

We seek Board approval of this new minor. It appears on the consent agenda in this month's report

PRESIDENT'S RECOMMENDATION:

The President recommends approval.

5. Committee of the Whole- CONSENT AGENDA
Fiscal Year 2015 Budget Authority Increase - ASUW, Lowe

CHECK THE APPROPRIATE BOX(ES):

- Work Session
- Education Session
- Information Item
- Other Specify: Committee of the Whole (Consent Agenda)

BACKGROUND AND POLICY CONTEXT OF ISSUE:

The narrative for this item can be found under the work sessions section of the report.

6. Committee of the Whole- CONSENT AGENDA
Approval of Architect-Engineer for the Hoyt Hall Renovation Project, Mai

CHECK THE APPROPRIATE BOX(ES):

- Work Session
- Education Session
- Information Item
- Other Specify: Committee of the Whole (Consent Agenda)

BACKGROUND AND POLICY CONTEXT OF ISSUE:

The narrative for this item can be found under the work sessions section of the report.

7. Committee of the Whole- CONSENT AGENDA
Approval of CMAR for Engineering Building Project, Mai

CHECK THE APPROPRIATE BOX(ES):

- Work Session
- Education Session
- Information Item
- Other Specify: Committee of the Whole (Consent Agenda)

BACKGROUND AND POLICY CONTEXT OF ISSUE:

The narrative for this item can be found under the work sessions section of the report.

1. INFORMATION ONLY ITEM
Progress Report/Change Orders, Mai

- Work Session
- Education Session
- Information Item
- Other Specify:

Capital Construction
Progress Report as of December 5, 2014

The following is an accounting of the progress and activity of construction and design since the last Trustees meeting. Also reported are approved change orders.

PROJECTS IN CONSTRUCTION

1. White Hall Renovation

Contractor	Sampson Construction Company, Inc. Cheyenne, WY
Bid Price	\$10,355,500
Contract Substantial Completion Date	Various phases – final phase August 7, 2015

(In Thousands)	Total	Admin	Constr	Design	FF&E	Misc	Cntngcy
Budget	13,935	789	11,185	553	440	311	657
Expended	13,317	496	11,199	553	390	311	368
Obligated	308	0	283	0	0	0	25
Other Funding	297	0	297	0	0	0	0
Un-obligated	607	293	0	0	50	0	264

Remarks White Hall is complete and no longer in warranty. McIntyre Hall apartment remodel and window replacement on floors 8-12 are complete. The remaining window replacement for floors 2-7 will begin May 2015.

2. Half Acre Gymnasium Addition and Renovation

Contractor	Groathouse Construction, Inc. Laramie, WY
Guaranteed Maximum Price	\$19,800,000
Contract Substantial Completion Date	January 15, 2015
Extended	March 31, 2015

(In Thousands)	Total	Admin	Constr	Design	Tech	FF&E	Misc	Cntngcy
Budget	26,919	912	19,800	2,922	974	974	637	700
Expended	20,884	785	18,215	1,455	0	414	15	0
Obligated	5,874	3	1,585	1,467	974	523	622	700
Un-obligated	161	124	0	0	0	37	0	0

Remarks New construction continues on the Phase 1 eastern addition, focusing on interior finishes in all areas. Painting, ceiling systems, tile and specialty flooring, casework and building specialties, and building systems work are progressing on all floors. Stone and brick masonry and other exterior building finish work is continuing toward completion despite material supply and labor issues. Specialty building equipment, including feature three-story climbing pinnacle and bouldering wall, are in final finishing processes. Building HVAC start-up is pending as necessary to begin conditioning of spaces for temperature- and moisture-dependent finish work such as wood athletic flooring. Exterior site improvements and non-seasonal landscaping are nearing completion.

Construction progress on the Phase 1 addition remains behind the revised construction schedule provided by project CMAR Groathouse Construction.

Phase 1 addition schedule of substantial completion on January 5, 2015 and opening on January 20, 2015 remains under review with Groathouse Construction.

Phase 2 renovation of the historic portion will commence upon occupancy of the Phase 1 addition; completion of Phase 2 renovation is now scheduled for late spring 2015.

3. Buchanan Center for the Performing Arts

Contractor	Sampson Construction Company, Inc. Cheyenne, WY
Guaranteed Maximum Price	\$25,700,000
Contract Substantial Completion Date	October 31, 2014
Extended	May 2015

(In Thousands)	Total	Admin	Constr	Design	Tech	FF&E	Misc	Cntngcy
Budget	35,000	960	25,778	3,545	1,208	2,450	500	559
Expended	27,290	960	23,080	3,011	0	181	2	56
Obligated	7,619	0	4,004	534	500	1580	498	503
Other Funding	1,306	0	1,306	0	0	0	0	0
Un-obligated	1,397	0	0	0	708	689	0	0

Remarks New sanitary and storm sewer pipe installation on the south side of the building will be complete in late December or early January. The new east addition exterior framing, sheathing and vapor barrier installation is complete. Masonry work is ongoing on the south and east sides. Exterior glazing will continue on the south and east sides this week. Roofing is complete. Interior framing/drywall, rough-in plumbing, duct work, and electrical work are ongoing. The northwest addition wall framing is complete, with painting and electrical and plumbing trim outs ongoing. Work in the existing building is ongoing, with display boards, curtains, acoustic wall panels and carpeting ongoing.

4. Arena Auditorium Renovation, Phase I

Contractor	Haselden Wyoming Constructors Casper, WY
Guaranteed Maximum Price	\$7,056,730
Contract Substantial Completion Date	September 30, 2014

(In Thousands)	Total	Admin	Constr	Design	Tech	FF&E	Misc	Cntngcy
Budget	12,850	415	10,292	1,065	250	427	40	361
Expended	10,590	211	8,785	1,007	112	427	40	8
Obligated	2,078	22	1,507	58	138	0	0	353
Un-obligated	182	182	0	0	0	0	0	0

Remarks A certificate of occupancy has been issued for the building and the building is now in use. A certificate of substantial completion is in progress with minor punch list items remaining.

CHANGE ORDERS

1. White Hall Renovation

No new change orders to report.

Statement of Contract Amount

Original Contract	\$10,355,500
Change Order 1-21	<u>+ 1,389,541</u>
Adjusted Contract	\$11,745,041

2. Half Acre Gymnasium Addition and Renovation

Item 1 Power- operated window shade in climbing area	Add:	55,328
Item 2 Student lounge 1223 power receptacles	No Change	
Item 3 Existing water main lowering at south entry	Add:	21,672
Item 4 Existing electrical ductbank protection at intersection	Add:	6,374
Item 5 Lighting and controls associated with ASI #13	Add:	1,434
Item 6 Revise centralize MAC gym equipment controls	No Change	
Item 7 Revisions to MAC gym wall pads	Add:	22,289
Item 8 Revisions to MAC gym wall graphics	Add:	12,195
Item 9 Roof drainage modifications	Add:	1,971
Item 10 Existing west penthouse wall remedial work	<u>Add:</u>	<u>3,296</u>

Total Change Order No 9 Add: 124,559

Statement of Contract Amount

Original Contract	\$19,800,000
Change Orders 1-9	<u>\$ 4,005,926</u>
Adjusted Contract	\$23,805,926

3. Buchanan Center for the Performing Arts

Item 1 Cold form framing revisions	No Change
Item 2 AV recording equipment	Deduct: 20,987
Item 3 Breakroom 2099B HM window	Add: 498
Item 4 Change fixed windows to operable	Add: 9,033
Item 5 Eliminate fireproofing thrust theatre	Deduct: 2,952
Item 6 Add access control power	Add: 4,391
Item 7 Design changes tec drawings	Deduct: 4,588
Item 8 Roof drain design changes	Add: 12,618
Item 9 Redesign recital canopy	Deduct: 4,452
Item 10 Drapery change recital hall	Add: 1,214
Item 11 Tension wire grid hangers	Add: 1,007
Item 12 Modify rigging head block	Add: 5,720
Item 13 Entry canopy ledge	Add: 6,551
Item 14 Drainage changes to roof	No Change
Item 15 Add mech room door 3100AB	Add: 4,336
Item 16 Add gypsum enclosure to CUH-5	Add: 1,686
Item 17 Replace existing doors and hardware	Add: 34,693
Item 18 Update walls req. vapor barrier	No Change
Item 19 Servoreeler changes 1016, 2003	Deduct: 11,811
Item 20 AV systems lectern panels	No Change
Item 21 Demo, patch, refinish 1037 alcove	Add: 1,711
Item 22 Keyed construction cores & keys	No Change
Item 23 Structural conflics @ W11	Add: 8,043
Item 24 Add power-shop welding equipment	Add: 3,003
Total Change Order No 13	Add: 50,011

Item 1 Changes to microphone	Add: 2,800
Item 2 Costs for beneficial occupancy	Add: 35,979
Item 3 Various wall & ceiling changes	Add: 30,685
Item 4 Credit initial finishes Rm 1019	Deduct: 3,409
Item 5 Replace Elec H2EM panel breakers	Add: 1,535
Item 6 Add Roof walk pads & ladder	Add: 34,222
Item 7 Demo carpet & clean residue	Add: 155
Item 8 Add steel beam for 1133J & 1133K doors	Add: 1,824
Total Change Order No 14	Add: 113,791

Item 1 Pipe installation post abatement	Add: 16,083
Item 2 Modify chase and fire damper	Add: 5,658
Item 3 Rework cost thrust theatre	Add: 12,633

Item 4 Add data outlet catering 2148	Add:	767
Item 5 Infrastructure WAP locations	Add:	42,350
Item 6 Redesign power catering 2148	Add:	<u>1,973</u>
Total Change Order No 15	Add:	79,464

Statement of Contract Amount

Original Contract	\$25,700,000
Change Orders 1-15	<u>4,546,527</u>
Adjusted Contract	\$30,246,527

4. Arena Auditorium Renovation Phase I

Item 1 Locker mockups	Add:	2,457
Item 2 Overhead plumbing in S&C	Add:	2,196
Item 3 Film room	Add:	1,125
Item 4 Cable tray routing	Add:	17,607
Item 5 Ceiling dimensions	Add:	1,591
Item 6 MBB light switching	Add:	623
Item 7 ASI 36 video production room lighting	Add:	927
Item 8 Room CO29 sports med sink type	Add:	289
Item 9 Elkridge Builders' graphics package	Add:	178,894
Item 10 Floor plate's for water bug monitors	Add:	1,186
Item 11 Additional costs of MCC-2 repair in mech rm	Add:	4,393
Item 12 Furring of coaches locker rm wall	Add:	<u>624</u>
Total Change Order No 6	Add:	211,912

Item 1 Sump pump	Add:	14,274
Item 2 Add resilient flooring	Add:	6,135
Item 3 Modification to women's bball door	Add:	763
Item 4 Labor for building containment tent	Add:	20,198
Item 5 Locker changes	Add:	11,442
Item 6 Womens' locker shower changes	Add:	4,821
Item 7 Owner approved partial value OAC discussions	Add:	20,000
Item 8 Cable tray relocation	Add:	5,630
Item 9 Credit for AHU filters	Deduct:	909
Item 10 Finish details	Add:	1,707
Item 11 Event floor graphics	Add:	565
Item 12 WBB locker width	Add:	4,733
Item 13 Telescoping seating electrical disconnects	Add:	4,532
Item 14 Install Cryotherm tub backflow preventer	Add:	741
Item 15 Replacement of existing diffusers	Add:	1,254
Item 16 Added drain pan in electrical room	Add:	874

Item 17 Access panel for fire damper behind lockers	Add:	248
Item 18 Additional painting cost	Add:	1,421
Item 19 Misc finishes, WBB & MBB locker room flooring	Add:	7,787
Item 20 Framing and back installation of advent graphics	Add:	4,417
Item 21 ADA platform and camera platform revisions	Add:	22,077
Item 22 Furred wall in S&C	Add:	6,740
Item 23 MBB shower wall, reconfigure steps	Add:	8,724
Item 24 Lights & fixtures, sprinkler pipe	Add:	13,615
Item 25 Electrical revisions game clock	Add:	15,677
Item 26 Electrical revisions relocate corridor receptacles	Add:	<u>1,034</u>
Total Change Order No 7	Add:	178,500
Item 1 Change in scope for environmental graphic work	Add:	<u>62,230</u>
Total Change Order No 8	Add:	62,230

Statement of Contract Amount

Original Contract	\$7,056,730
Change Orders 1-8	<u>\$1,149,503</u>
Adjusted Contract	\$8,206,233