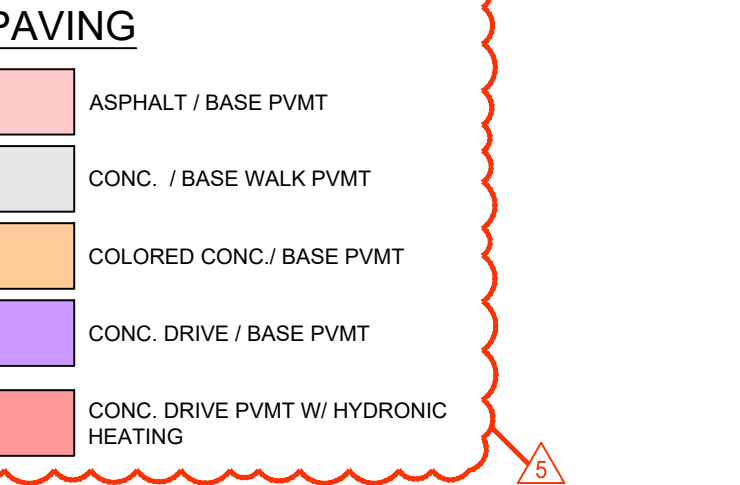
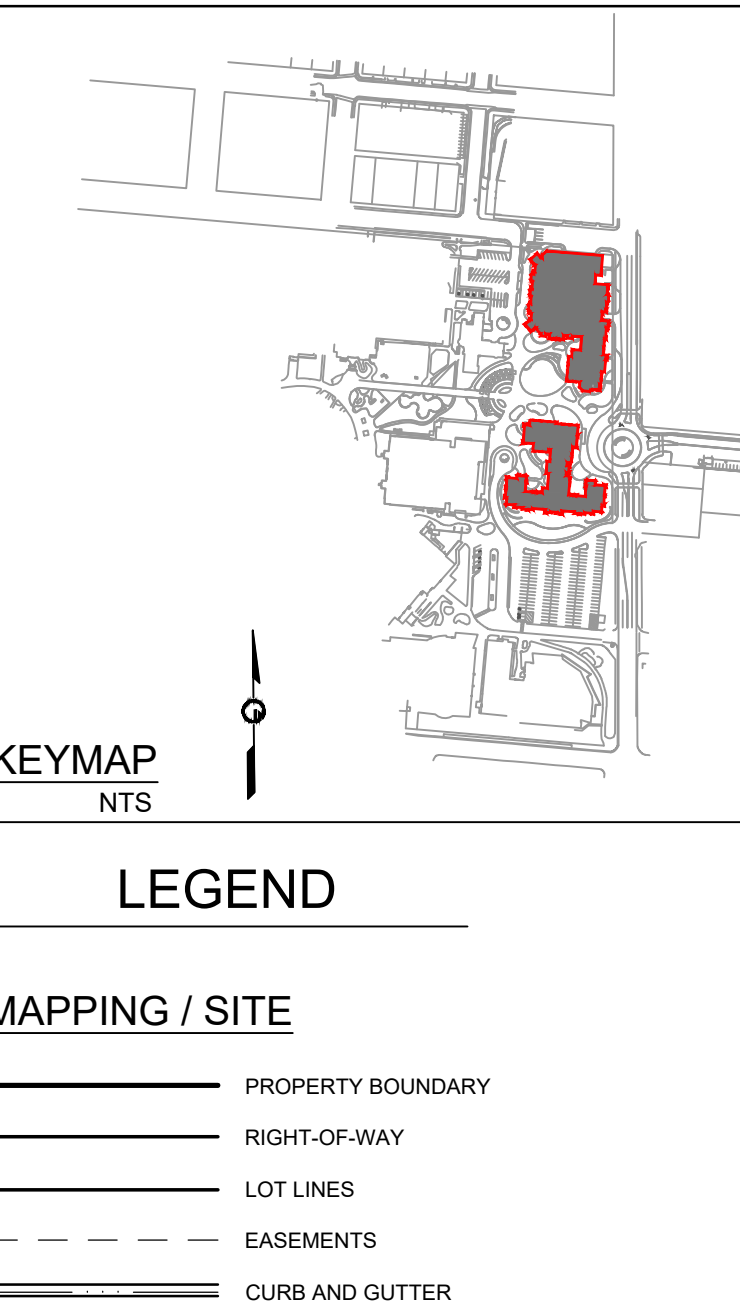
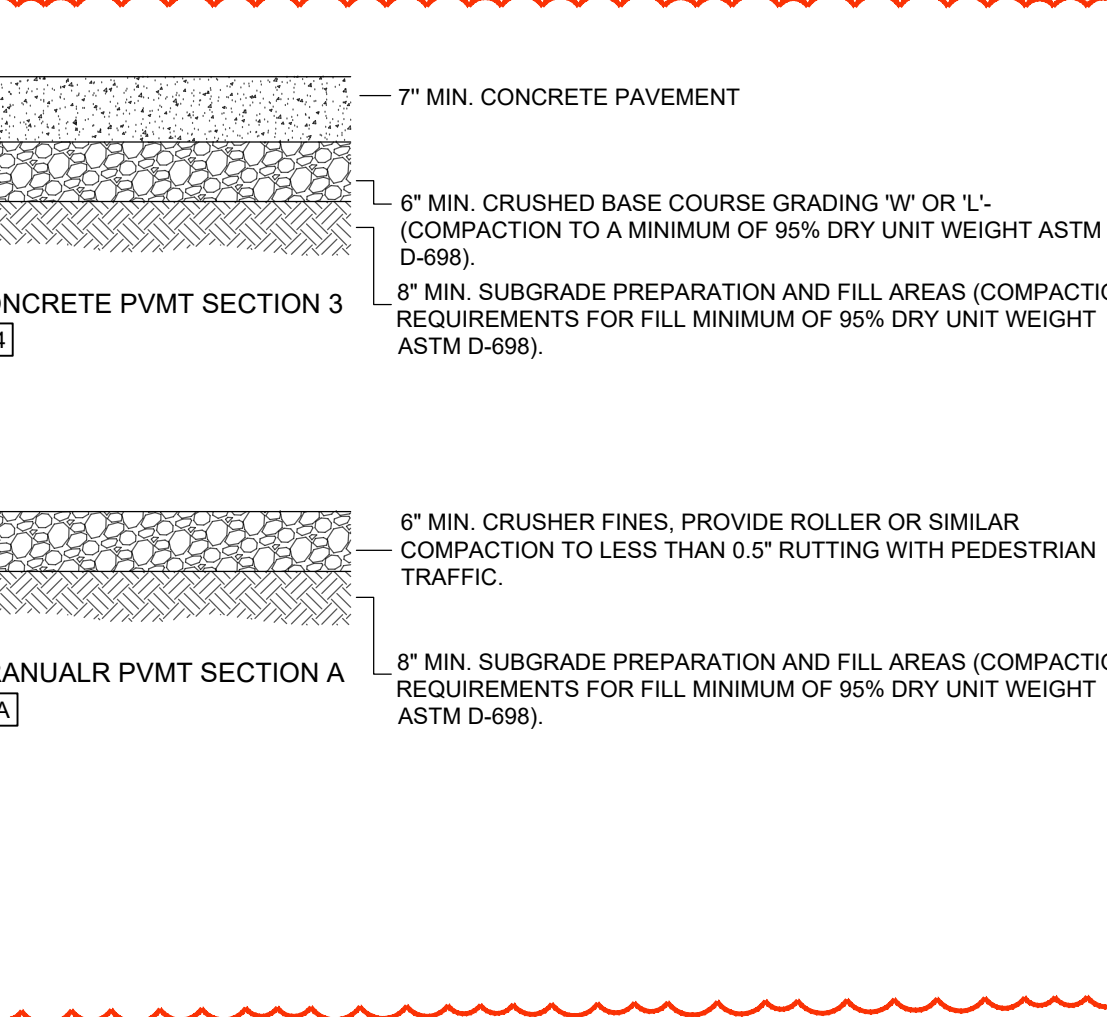
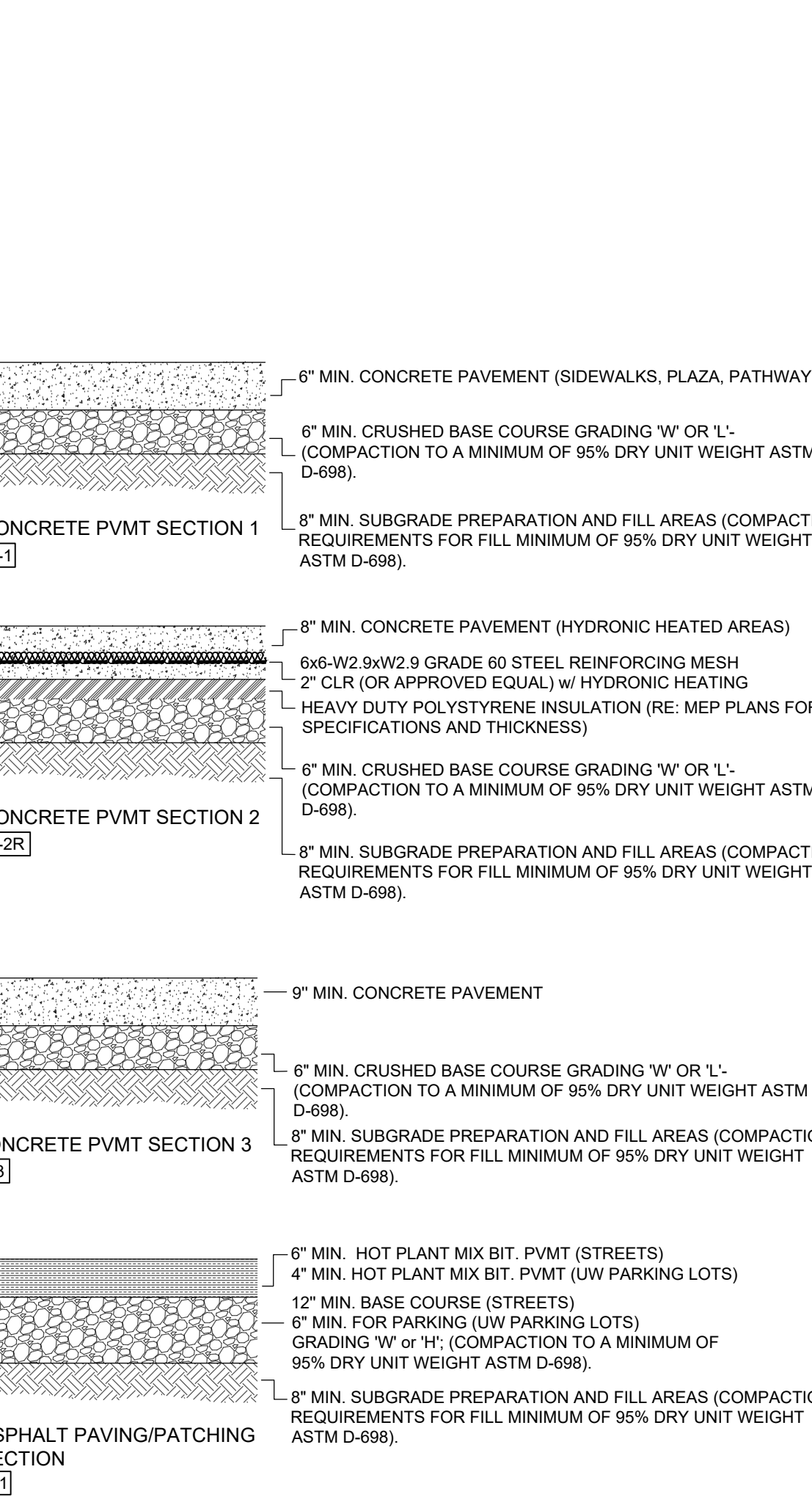


- PAVING GENERAL NOTES**
- ALL CIVIL SITE WORK (EXCLUDING STRUCTURAL) PAVING AND SURFACING MATERIALS AND WORKMANSHIP SHALL CONFORM TO THE WYOMING PUBLIC WORKS STANDARD SPECIFICATIONS 2015 EDITION AS AMENDED BY THE PLANS AND ANY SPECIAL PROVISIONS. THE CONTRACTOR AND SUB-CONTRACTORS SHALL OBTAIN THESE SPECIFICATIONS FOR USE ON THE PROJECT. THESE DOCUMENTS CAN BE OBTAINED FROM ACEG OF WYOMING: [www.acegwy.org](http://www.acegwy.org) AND FOLLOWING THE LINK TO WYOMING PUBLIC WORKS STANDARD SPECIFICATIONS. METHOD OF MEASUREMENT AND BASIS OF PAYMENT SECTIONS SHALL NOT BE USED WITHIN THESE SPECIFICATIONS.
  - NO WORK MAY COMMENCE WITHIN ANY PUBLIC RIGHT-OF-WAY UNTIL A RIGHT-OF-WAY PERMIT HAS BEEN OBTAINED. THE CONTRACTOR SHALL SUBMIT A CONSTRUCTION TRAFFIC CONTROL PLAN THAT ADDRESSES BOTH VEHICULAR AND PEDESTRIAN TRAFFIC IN ACCORDANCE WITH THE MOST CURRENT EDITIONS OF THE CITY OF STANDARD FALLS DRAWINGS AND THE MANUAL OF UNIFORM TRAFFIC CONTROL DEVICES (MUTCD).
  - WHEN CALLED FOR BY THE GENERAL SPECIFICATIONS FOR CIVIL SITE WORK RELATING TO, BUT NOT LIMITED TO, PAVEMENTS, CURBS AND GUTTER, SIDEWALKS AND RELATED SECTIONS, ITEMS NORMALLY SUBMITTED TO, REQUESTED BY, OR OTHERWISE REQUIRED BY THE CITY OF LARAMIE SUCH AS: SUBMITTALS, SHOP DRAWINGS, INSPECTIONS, FORM INSPECTION, QUALITY CONTROL, TESTING RESULTS, SHALL BE SUBMITTED TO THE PROJECT MANAGER, ARCHITECT, AND ENGINEER AS DETERMINED UNDER THE COORDINATION SECTION OF THE CONTRACT. ALL ASPECTS OF QUALITY CONTROL, TESTING AND SUBMITTALS OUTLINED WITHIN THE STANDARD CIVIL SPECIFICATIONS (WYSSS 2015) SHALL BE SUBMITTED TO THE OWNER'S PROJECT MANAGER AND ENGINEER FOR REVIEW AND APPROVAL UNLESS OTHERWISE REQUIRED BY THE CONTRACT DOCUMENTS.
  - TESTING OF MATERIALS FOR PUBLIC INFRASTRUCTURE SHALL BE PROVIDED TO THE APPROPRIATE AGENCY AS REQUIRED BY THE STANDARD CIVIL SPECIFICATIONS. THE CONTRACTOR SHALL NOT ASSUME ANY SUBMITTAL OR QUALITY CONTROL RELATED REQUIREMENTS WITHIN THE SPECIFICATIONS ARE WAIVED FOR CONSTRUCTION OF PRIVATE FACILITIES.
  - THE CONTRACTOR SHALL PROVIDE, AT THE COMPLETION OF THE PROJECT OR EACH PHASE OF THE PROJECT, A COMPLETE SET OF REPRODUCIBLE AS-BUILT DRAWINGS TO THE OWNER'S REPRESENTATIVE. THE AS-BUILT DRAWING WILL CONSIST OF:
    1. MARKED UP SET OF ISSUED FOR CONSTRUCTION DRAWING VERIFYING THE FOLLOWING:
      1. AN OUTLINE OF NEW SURFACING LIMITS
      2. NEW CURB AND GUTTER (TOP BACK OF CURB, FLOWLINE, AND EDGE OF PAV)
      3. BUILDING FINISHED FLOOR ELEVATIONS (ALL DOORWAY AND ENTRY POINTS)
      4. ANY OTHER VARIATIONS FROM THE CONSTRUCTION DOCUMENTS MUST BE CLEARLY NOTED AND DETAILED ON THE PLANS
  - THE FINAL AS-BUILT DRAWING CERTIFICATE SHALL BE SIGNED ON EACH SHEET BY THE CONTRACTOR OR SUB-CONTRACTOR RESPONSIBLE FOR THE WORK. SEE GIS REQUIREMENTS FOR FINAL DELIVERABLE.

- GIS DELIVERABLES NOTES**
- ALL AS-BUILT SITE SURFACING AND BUILDING OUTLINE ELEMENTS SHALL BE PROVIDED TO THE OWNER IN GIS FORMAT MEETING REQUIREMENTS OF THE DOCUMENTATION/RECORD DRAWINGS SECTION OF THE CURRENT EDITION OF THE UNIVERSITY OF WYOMING DESIGN GUIDELINES PUBLICATION.
  - THE CONTRACTOR SHALL CONSULT WITH THE DEPUTY DIRECTOR FOR UTILITIES MANAGEMENT (UW OPERATIONS) AND THE ENTERPRISE GIS ARCHITECT (WYOMING GEOGRAPHIC INFORMATION SCIENCE CENTER (WYGIS)) TO ACQUIRE THE DATABASE SCHEMA BEFORE POPULATING THE ATTRIBUTE TABLES TO ENSURE THE DATA MATCHES THE NEEDS OF THE UNIVERSITY. LAYER LEVEL, METADATA UPDATES ARE REQUIRED FOR ALL UPDATED OR NEW LAYER DELIVERABLES, AND THE CONTRACTOR SHALL CONSULT WITH UW OPERATIONS AND WYGIS TO IDENTIFY THE SPECIFIC METADATA CONTENT REQUIREMENTS.
  - ALL GIS DATA PROVIDED TO THE UW SHALL ADHERE TO THE DATABASE SCHEMA REQUESTED BY THE UNIVERSITY FOR EACH DATA LAYER.
  - THE GIS DELIVERABLE SHALL BE DELIVERED ON CD-ROM OR DVD TO UNIVERSITY OF WYOMING FOR QUALITY ASSURANCE (QA) AND THE UNIVERSITY WILL HAVE TWO WEEKS TO REVIEW THE DATA. THE CONTRACTOR WILL HAVE TWO WEEKS TO MAKE ANY CORRECTIONS AND PRODUCE THE FINAL DELIVERABLE.
  - THE CONTRACTOR SHALL PROVIDE A DOCUMENT (IN EXCEL FORMAT) THAT LISTS ALL LAYERS DEVELOPED OR UPDATED FOR THE TASK.
  - ALL DATA COLLECTION SHALL CONFORM TO FIELD COLLECTION GRADE DIGITIZING/CONVERSION COLLECTION PROCEDURES AS SPECIFIED BY THE TASK OR PROJECT AS A WHOLE. THE ACCEPTABLE DATA FORMATS FOR GIS DELIVERABLES ARE, IN ORDER OF PREFERENCE: ESRI FILE GEODATABASE, SHAPESHIFT, AUTOCAD VERSION 2014 OR EARLIER, PROVIDED THAT THE DATA ADHERE TO THE REQUIREMENTS REGARDING THE COORDINATE SYSTEM, METADATA, FEATURE ATTRIBUTION AND DATA INTEGRITY (SEE UW DESIGN GUIDELINES).
  - NOTE THE FINAL AS-BUILT DELIVERABLES WILL BE REQUIRED TO BE RE-PROJECTED INTO THE OWNER SPECIFIED COORDINATE SYSTEM STATE PLANE WYOMING EAST FIPS AND USE THE NAD83 DATUM AND FEET FOR UNITS OF MEASURE. THE CURRENT PROJECT IS IN A LOCAL HORIZONTAL CONTROL COORDINATE SYSTEM AS ESTABLISHED BY LARAMIE LAND SURVEYING AND NOT STATE PLANE GRID. CONSULT WITH A LICENSED LAND SURVEYOR FOR CONVERSION OF LOCAL DATUM TO THE REQUIRED AS-BUILT WYOMING STATE PLANE EAST COORDINATE SYSTEM.
  - THE CONTRACTOR SHALL EMPLOY APPROPRIATE QA/QC STANDARDS TO ENSURE THAT AS-BUILT DATA IS TOPOLOGICALLY CORRECT, ACCURATE AND COMPLETE FOR ALL INSTALLED UTILITIES AND SITE FEATURES.
  - ADA RAMP SHALL BE REQUIRED FOR ALL PEDESTRIAN STREET CROSSINGS AND STREET CORNERS AND PEDESTRIAN REFUGE ISLANDS.
  - BUS LOADING ZONES SHALL REQUIRE TRUNCATED DOME ALONG FULL FRONTAGE OF TRANSIT STOP.



- NOTES**
- SEE PROJECT GEOTECHNICAL REPORT FOR ADDITIONAL PAVEMENT AND SUBGRADE PREPARATION DESIGN RECOMMENDATIONS.
  - COLORED CONCRETE SHALL BE INTEGRAL MIXED WITH COLOR SELECTED BY PROJECT ARCHITECT/LANDSCAPE ARCHITECT BASED ON INITIAL RANGE OF SAMPLES AND APPROVED BASED ON MOCK-UPS ACCEPTED BY THE DESIGN TEAMS.

- PAVING KEY NOTES**
- ADA RAMP SHALL BE REQUIRED FOR ALL PEDESTRIAN STREET CROSSINGS AND STREET CORNERS AND PEDESTRIAN REFUGE ISLANDS.
  - BUS LOADING ZONES SHALL REQUIRE TRUNCATED DOME ALONG FULL FRONTAGE OF TRANSIT STOP.
  - RE: ROADWAY GEOMETRY, PLAN AND PROFILES, TYPICAL SECTIONS, AND PAVING DETAILS FOR ADDITIONAL INFORMATION.
  - RE: LANDSCAPE PLANS FOR PAVING INFORMATION FOR GENERAL SITE ELEMENTS AND COLORING REQUIREMENTS FOR CIVIL PAVING SECTIONS INCLUDING BUS LANES, ROUNDABOUT LANES, AND PEDESTRIAN REFUGE ISLAND CROSSINGS, ETC.
  - UTILITY COURTYARD SURFACING IS FOR AREAS OUTSIDE OF EQUIPMENT HOUSEKEEPING PADS (SEE ELECTRICAL PLANS FOR LAYOUT REQUIREMENTS). SEE P-01 FOR TYPICAL HOUSEKEEPING PAD DETAILS.
  - SEE [B-PVMT] FOR TRANSITIONS BETWEEN ROLL-OVER AND HIGHBACK CURB AND OTHER CURB SECTIONS.

- LEGEND**
- CG-A NEW HIGHBACK (VERTICAL) CURB AND GUTTER (30")
  - CG-B NEW ROLL OVER CURB AND GUTTER (30")
  - ADA-1 NEW ADA RAMP (TYPE )
  - CR NEW CURB RETURN AND FILLET
  - VP NEW VALLEY GUTTER
  - PR PEDESTRIAN REFUGE AREA
  - DR-# NEW DRIVE AND ALLEY RETURN (TYPE)
  - SC-# SIDEWALK CHASE (WIDTH)
  - STM CONCRETE STORM SEWER OUTFALL
  - CRO CURB OPENING
  - UC UTILITY COURTYARD AREA (SEE NOTE E ABOVE)

- REVISION NOTES**
- ADDED COLOR FOR SECTIONS FOR CLARITY
  - ADDED SECTION C-4 (7" CONC.) FOR HIGHER DUTY TRAFFIC AND TRASH PICKUP AREAS. AREAS CLOUDED
  - UNION PARKING LOT MILL AND OVERLAY PART OF BASE BID
  - ADDED NOTES ON CURB AND GUTTER INTEND AROUND SITE AND FIRE LANE.

**alm2s**  
ARCHITECT OF RECORD  
712 Wharfedale Way  
Fort Collins, CO 80525  
970.223.1820

**PLAN**  
plan one / architects

**MACKEY MITCHELL**  
ARCHITECTS  
DESIGN ARCHITECT  
Mackey Mitchell Architects  
900 Spruce Street, Suite 500  
St. Louis, MO 63102  
314.421.1515

**ASSOCIATE ARCHITECT**  
Plan 1 Architects  
1501 12th Street  
Boz, WY 82414  
307.587.5546

**Culinary Design:**  
3225 S. Veterans Way  
Greenwood Village, CO 80111  
(303) 221-6504

**Landscaping:**  
Russett + Mills  
506 S. College Avenue, Unit A  
Fort Collins, CO 80502  
(970) 514-1012

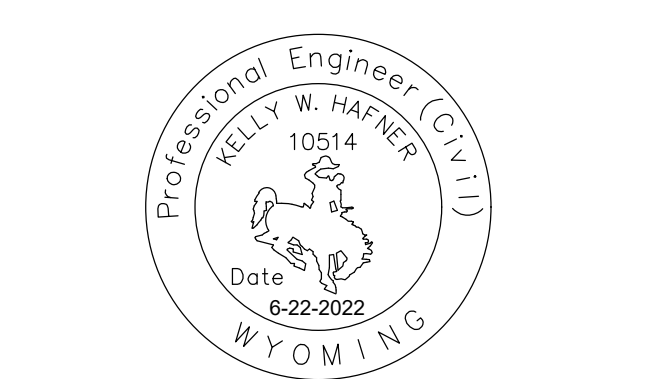
**Civil:**  
CityWork, LLC  
1807 Capitol Avenue, Suite 206  
Cheyenne, WY 82001  
(970) 686-0446

**Structural:**  
Martin/Martin  
4020 Laramie Street  
Cheyenne, WY 82001  
(307) 637-8422

**Mechanical/Plumbing/ET:**  
BCER Engineering  
5420 West Road  
Avondale, CO 80002  
(719) 535-1112

**Electrical:**  
Carter Run & Associates  
423 W. Lincolnway  
Cheyenne, WY 82002  
(307) 274-3532

**FF&E:**  
R.M. Rowan Design  
501 19th Street  
Wheatland, WY 82201  
(307) 910-6002



**University of Wyoming Residence & Dining Halls**

1000 E University Ave  
Laramie, WY 82001

NO	DATE	DESCRIPTION
1	07-05-2022	CITY SITE PLAN RESUBMITTAL
2	07-08-2022	ADDENDUM #1
3	07-18-2022	ADDENDUM #2

MMA Job #: 20070 7-05-2022  
CITY OF LARAMIE SITE PLAN RESUBMITTAL

**CIVIL OVERALL PAVING PLAN**

**C-PV100**