

# WIND ADVISORY COMMITTEE MEETING BOOKLET

**October 14<sup>th</sup> , 2025**



Our work is guided by  
values of service,  
dignity, collaboration,  
and innovation.

The Wyoming Institute for  
Disabilities (WIND) assists and  
supports individuals with  
developmental and other  
disabilities, their families, and  
their networks by promoting  
full community inclusion,  
independence, cultural  
competence and social  
participation.



College of Health Sciences  
Wyoming Institute  
for Disabilities

# WIND Advisory Committee Function

1

Connect WIND to key individuals in the university and in the state who can assist in carrying out WIND's education, research, and service missions;

2

Help WIND expand its resource base;

3

Increase WIND's visibility within the university and within the state to assist WIND in becoming more integrated in both;

4

Advise WIND on overall annual program goals; and

5

Increase disability awareness on campus and throughout the state.

---

## Background

The Wyoming Institute for Disabilities is a University Center for Excellence in Developmental Disabilities and an academic unit in the College of Health Sciences, University of Wyoming. Established in 1994, the Wyoming Institute for Disabilities demonstrates excellence in providing interdisciplinary, pre-service education, continuing education, community training, technical assistance, and services as they relate to individuals with developmental and other disabilities.

## Mission

The Wyoming Institute for Disabilities (WIND) assists and supports individuals with developmental and other disabilities, their families, and their networks by promoting full community inclusion, independence, cultural competence and social participation. Our work is guided by values of service, dignity, collaboration, and innovation.

---

## Contact Information

Wyoming Institute for Disabilities  
1000 University Avenue, Department 4298  
Laramie, WY 82071  
Phone: (307) 766-2761; Toll Free: (888) 989-9463;  
TTY: 800-908-7011; Fax: (307) 766-2763  
E-Mail Address: [uwwind@uwyo.edu](mailto:uwwind@uwyo.edu)  
Website: <http://www.uwyo.edu/wind>

# Table of Contents

Meeting Details .....	2
WIND Consumer Advisory Council Meeting Agenda .....	3
WIND Advisory Committee Meeting Agenda .....	4
Previous Advisory Committee Meeting Notes .....	5
WIND Consumer Advisory Council Member Directory .....	8
WIND Advisory Committee Member Directory .....	9
WIND Faculty and Staff Participants .....	10
Five Year Plan, 2022-2027 .....	11
Practicum and Student Workers .....	12
Disability Studies December Graduates .....	13
Telehealth Updates .....	14
Project Directory .....	16

# Meeting Details

---

The WIND Consumer Advisory Council meeting and the WIND Advisory Committee will be held in person on Tuesday, Oct. 14, at the Birch & Timber rooms at the Hilton Garden Inn, 2229 Grand Avenue, Laramie WY 82070.

9:30 a.m. – 12:00 p.m. – Consumer Advisory Council Meeting

12:00 p.m. – 1:00 p.m. – Lunch with Consumer Advisory Council  
and WIND staff

1:00 p.m. – 3:30 p.m. – WIND Advisory Committee Meeting

## **Consumer Advisory Council Meeting**



To join remotely, scan the QR code or visit the following link:  
<https://uwyo.zoom.us/j/94427953523?pwd=pGX8tzC320l4lqnIWmcuEXFJPYtWeo.1>

## **WIND Advisory Committee Meeting**



To join remotely, scan the QR code or visit the following link:  
<https://uwyo.zoom.us/j/95673267905?pwd=yHHTcAk4cRu6aDDgvob62pwR9xUa2z.1&jst=1#success>



# **WIND Consumer Advisory Council Meeting Agenda**

## **October 14, 2025**

Hilton Garden Inn, Birch & Timber Rooms

---

- 9:30 a.m.      Sandy Thiel, WIND CAC Chairperson  
Welcome and Introductions  
Roll Call of CAC Members  
Approval of the meeting agenda  
Approval of April 8, 2025 meeting minutes  
Introduction of new members
- 9:45 a.m.      Michelle Jarman, Ph.D., WIND Executive Director  
Wyoming Institute for Disabilities update  
Eric Moody, Ph.D., WIND Associate Director  
Research update
- 10:10 a.m.     Sandy Thiel, CAC Chair  
COLA Update  
Bylaws: present revisions, member discussion
- 11:15 a.m.     Sandy Thiel, CAC Chair  
CAC Updates  
Tribute to Sandy Hubert
- Winter Meeting: CAC brainstorming for new projects
- 11:50 a.m.     Adjourn and break for lunch with the WIND Advisory Committee  
Keith A. Miller Award during lunch
- 1:00 p.m.      WIND CAC will join the meeting with the WIND Advisory Committee

# **WIND Advisory Committee Meeting Agenda**

## **October 14, 2025**

Hilton Garden Inn  
2229 Grand Avenue, Laramie, WY  
Birch & Timber Rooms

---

- 12:00 p.m.      Lunch with WIND Consumer Advisory Council and WIND staff
- 1:00 p.m.      Convene meeting, Patrick Hardigan, Dean, College of Health Sciences
- Welcome
  - Introductions, all
  - Approval of agenda
  - Approval of April 8, 2025 meeting notes
- 1:20 p.m.      Meeting orientation, booklet review, Michelle Jarman
- 1:30 p.m.      WIND Consumer Advisory Council updates, Sandy Thiel, Chair
- 1:40 p.m.      College of Health Sciences updates, Dean Hardigan
- 1:50 p.m.      WIND Highlights
- WIND Updates, Michelle Jarman & Eric Moody
  - Annual Report & 5-Year Planning
  - Funding landscape: Canyon Hardesty & Eric Moody
  - Recent Proposals & Projects
  - Rural Health Transformation
- 2:20 p.m.      Brief Break
- 2:30 p.m.      Group Discussion: Graduate Certificate in Disability Studies
- Stakeholder Interest & Input
- 3:10 p.m.      Agency and member updates, all
- 3:30 p.m.      Adjourn

Next meeting Tuesday, April 7th, 2026, UW Conference Center, Laramie

# **WIND Advisory Committee Meeting Notes**

## **April 8, 2025**

Marian H. Rochelle Gateway Center, Salon A, 1:00–3:30pm  
Laramie, WY

### **In attendance, members:**

- Patrick Hardigan: Chair
- Sandy Thiel: Chair CAC
- Amy Burns
- Jeff Gardner
- Tiffany Hunt
- Danielle Marks
- Christina McDonnell
- Samantha Reed
- Feliciana Turner
- Bill McDonald
- Marcy Walters
- Julie Andrew
- Chele Mecomber Porter
- Leo Levengood
- Kayla Green
- Lori Regnier

### **In attendance, WIND:**

- Michelle Jarman
- Canyon Hardesty
- Eric Moody
- Sandy Hubert
- Chianne Behrend
- Kathy Madere

---

WIND Advisory Committee meeting convened at 1:00pm.

**Introductions:** Dean Hardigan introduced himself and all members provided brief introductions.

Chair called for a motion to approve the agenda; seconded, carried.

A motion was called to approve the minutes of the last session (10/8/2024); seconded, carried.

**Meeting orientation and booklet review:** Michelle Jarman formally welcomed Dean Hardigan, newly appointed in January, with gratitude for support and willingness to serve in this role as Chair. She provided an overview of the meeting booklet including introduction of new WIND staff; announcement of Association of University Centers on Disabilities (AUCD) national awards to Sandy Root-Elledge and WIND Consumer Advisory Council; highlights of disability studies students, LEND trainees, and graduate assistants working at WIND, and new projects.

**Consumer Advisory Council (CAC) update:** Sandy Thiel, CAC Chair, provided recap of morning meeting, especially appreciation of Dean Hardigan and Interim Provost Turpen for joining the meeting, listening to CAC concerns, and willingness to support WIND and CAC work. Highlights of meeting include: formalizing processes and bylaws; transportation report and other projects; 5-year plan update.

**College of Health Sciences update:** Dean Hardigan expressed commitment to WIND, congratulated WIND on their hard work. From CHS perspective, we are working with UW President on potential partnership with University of Utah and on developing a PA program within the next few years.

## **WIND Highlights**

### **Director updates: Michelle Jarman**

UCEDDs and higher education are facing challenging federal funding landscape. Massive reorganization of the Administration for Community Living (ACL) has been proposed, and there are concerns about UCEDD funding, but we don't have concrete information yet. In the meantime, we lean on our mission, core functions, and partnerships as articulated in the DD Act. NIH funding is an area of concern, which would impact our TAPDINTOSTEM program, which supports students with disabilities in STEM fields. We continue our mission driven work, funded projects, and building academic programming. We are focused on developing a graduate certificate in disability studies and building inclusive post-secondary programming. Family members voiced excitement about IPSE and asked about scholarships, which WIND is working on; Canyon explained that we would prioritize WY high school students.

### **5-YR Plan Timeline / FASI Report: Eric Moody**

We're in the third year of 5-year grant cycle: finalizing national data analysis and working toward gathering statewide data from surveys, focus groups, and story gathering. We will bring that information back to CAC, WIND staff, and Advisory Committee for input and guidance. FASI (Functional Assessment Standardized Items): 3-year project with the state to determine suitability of new tool, FASI, in comparison to existing instruments, LT 101 & LT 104, for level of care determination. FASI is not being compared to ICAP, which coordinates well with support need and budgetary planning. Findings of FASI study: FASI worked well for children and adults on DD waivers and adults with ABI, but not well for older adults in skilled nursing facilities. We are waiting to hear from the state.

### **UW Project ECHO / ECHO Superhub: Canyon Hardesty**

We're celebrating 10 years of ECHO and WIND being an ECHO Superhub. WIND launched UW Project ECHO in 2014, with assistive technology. We've delivered 21 ECHO programs; delivered 1,389 ECHO sessions; provided 1,775 professional development hours; hosted 1,738 unique and nearly 29,000 total participants.

WIND was one of the first 4 ECHO Superhubs. Metrics over 10 years of Superhub work include: 19 partner launch trainings; 52 organizations and 80 individuals trained; 72 ECHO programs launched; new hubs in 24 states and 3 countries (India, Mexico, US). WIND has a strong Wyoming partnership with WyCOA. Current work includes training with NH/Maine LEND and special education consultant, Blazerworks. This long success demonstrates the impact of the ECHO model. Thanks to CAC for supporting our work.

### **Small Group Discussion:**

Groups discussed these questions: 1) concerns about state or federal funding or other changes and their impact on individuals with disabilities and families; 2) concerns members are hearing from constituencies; 3) ideas to address concerns in collaboration with WIND.

Small group reports: primary concerns

- Economic effects of funding changes, including:
  - Impacts of Medicaid cuts on people with disabilities, their families, including access to services, healthcare, employment, community life.
  - Impacts of tariffs on supply chains, farmers, businesses, access to prescription drugs and other resources; already seeing economic downturn in local communities such as struggling foodbanks.
  - Concerns about negative educational impacts on students with disabilities with decreases in special education funding, redirecting funding to charter and home schooling.
- Fraying of communities: some people support changes, others are scared, and many aren't sure who to trust – we need to work together, stay active locally.
- In conversations with stakeholders, there is fear of losing 40 years of progress in disability rights and advocacy. Fear and lack of support is taking a toll on people's mental health.

### **Collective ideas to address concerns, suggestions for WIND:**

- Reach out to parents and individuals to advocate for the importance of disability rights, including ongoing resources in special education to support students in the state.
- Educate state representatives about WIND; invite policymaker to join Advisory Committee – mention of Mike Massey's involvement in the past.
- As impacts of policies are better understood, WIND could intervene with virtual town halls, education, outreach, to inform people and suggest actions. Use WIND as a medium to bring people together and provide guidance with partner input and collaboration.

### **Agency member updates:**

No updates from Jeff Gardner, Feliciano Turner

**Amy Burns:** 8th annual conference Aug 13-15 in Casper. Wyoming Independent Living turns 40, open house, we'll provide more info.

**Kayla Green:** Shannon Buller having health issues, retiring after 15 years, Kayla named as Interim Director, down 2 staff. Save the Date for DD Conference, Oct. 8-10. Also still doing focus groups for our 5-yr plan for 2026. Stories welcome.

**Lori Regnier:** Like Kayla / Governor's Council, Protection and Advocacy is also in leadership transition. CEO of 46 years recently retired, and Andrew Lemke has stepped into CEO position. He's doing a great job, but it is a major shift after working with the former director for decades.

Michelle: thanks to everyone for these valuable contributions.

Meeting adjourned, 3:36pm

Next meeting Oct. 14, not October 7, 2025.

# WIND Consumer Advisory Council Member Directory

**Sandra Thiel, Council Chair, Advocate**

516 S. Thurmond Street  
Sheridan, WY 82801  
307-752-2794  
[Sandythiel58@gmail.com](mailto:Sandythiel58@gmail.com)

**Julie Andrew, Advocate**

4441 E. 24th Street  
Casper, WY 82609  
(H) 307-265-6968; (C) 307-262-4947  
[sjandrew2@bresnan.net](mailto:sjandrew2@bresnan.net)

**Samantha Andrew, Self-Advocate**

4441 E. 24th Street  
Casper, WY 82609  
(H) 307-265-6968; (C) 307-262-4947  
[sjandrew2@bresnan.net](mailto:sjandrew2@bresnan.net)

**Josh Bellamy, Advocate**

525 Coldwater Creek Drive  
Rock Springs, WY 82901  
(307) 371-6666  
[bellamy7900@outlook.com](mailto:bellamy7900@outlook.com)

**Krystyne Ethridge, Executive Director**

Parents Helping Parents of Wyoming  
P.O. Box 9515  
Cheyenne, WY 82003  
(307) 684-2277, Ext. #1  
[kethridge@wpic.org](mailto:kethridge@wpic.org)

**Brittany Hankinson-McGovern, Executive Director**

Brittany Hankinson-McGovern, Executive Director  
WY Governor's Council on Developmental  
Disabilities  
320 West 25th Street  
Capitol Hill Building - 1st Floor East  
Cheyenne, WY 82002  
Phone: (307) 777-7358  
[brittany.mcgovern@wyo.gov](mailto:brittany.mcgovern@wyo.gov)

**Leo Levensgood, Owner**

Lions Pride Care  
2617 E. Lincolnway, Suite J  
Cheyenne, WY 82001  
(307) 274-7850  
[lionspridecare@yahoo.com](mailto:lionspridecare@yahoo.com)

**Bill McDonald, Advocate**

1953 Edwards Drive, Unit A  
Sheridan, WY 82801  
(307) 751-3372  
[billymac@bresnan.net](mailto:billymac@bresnan.net)

**Chele Mecomber Porter, ex officio member**

Chair, Wyoming Assistive Technology Advisory  
Committee  
4675 Road 213  
Burns, WY 82053  
(307) 214-9925  
[rokoranch@gmail.com](mailto:rokoranch@gmail.com)

**Kylie Porter, Self-Advocate**

4675 Road 213  
Burns, WY 82053  
(307) 214-9925  
[rokoranch@gmail.com](mailto:rokoranch@gmail.com)

**Lori Regnier, Senior Program Administrator**

Protection & Advocacy  
7344 Stockman Street  
Cheyenne, WY 82009  
(307) 632-9436  
[wypande@wypanda.com](mailto:wypande@wypanda.com)



**Marcy Walters, Advocate**

REACH  
2857 Coffeen Avenue, #2  
Sheridan, WY 82801  
307-763-9660  
[Mwalters.cares2@gmail.com](mailto:Mwalters.cares2@gmail.com)

**Aleyta Zimmerman, Advocate**

3121 Grier Blvd  
Cheyenne, WY 82001  
307-267-7469  
[Raaheme@hotmail.com](mailto:Raaheme@hotmail.com)

**Sandy Hubert (retiring fall 2025)**

Coordinator of WIND CAC  
[Shubert1@uwyo.edu](mailto:Shubert1@uwyo.edu)

---

## WIND Advisory Committee Directory

**Patrick Hardigan, Chair  
Dean, College of Health Sciences**

1000 E. University Ave.  
Laramie, WY 82071  
(307) 766-3495  
[phardiga@uwyo.edu](mailto:phardiga@uwyo.edu)

**John Balow, Division Director**

Special Education Programs  
WY Department of Education  
122 W. 25th St., Suite E200  
Cheyenne, WY 82002  
(307) 777-3320  
[john.balow@wyo.gov](mailto:john.balow@wyo.gov)

**Amy Burns, Executive Director**

Wyoming Independent Living  
1050 N. 3rd St., Suite B1  
Laramie, WY 82072  
(307) 721-4071  
[aburns@wilr.org](mailto:aburns@wilr.org)

**Kayc DeMaranville, Vice President  
Education**

Ark Regional Services  
1150 N. 3rd Street  
Laramie, WY 82072  
(307) 742-6641  
[kayc@arkrs.org](mailto:kayc@arkrs.org)

**Jeff Gardner, Executive Director**

Wyoming Community Service Providers  
P.O. Box 2990  
Cheyenne, WY 82003  
(307) 760-8137  
[jeff@wyomingcsp.org](mailto:jeff@wyomingcsp.org)

**Nicky Harper, MSW, LCSW, CRC**

Vocational Rehabilitation Administrator  
WY Division of Vocational Rehabilitation  
5221 Yellowstone Road  
Cheyenne, WY 82002  
(307) 777-7386  
[nicky.harper@wyo.gov](mailto:nicky.harper@wyo.gov)

**Tiffany Hunt, Ph.D.**

Asst. Professor, College of Education  
University of Wyoming  
1000 E. University Ave., Dept. 3374  
Laramie, WY 82071  
[thunt@uwyo.edu](mailto:thunt@uwyo.edu)

**Danielle Marks, MSW, MPH**

Senior Policy Advisor  
Wyoming Department of Family Services  
2300 Capitol Avenue, Hathaway Building  
Cheyenne, WY 82002  
(307) 777-7734  
[danielle.marks1@wyo.gov](mailto:danielle.marks1@wyo.gov)

**Christina McDonnell, Ph.D.**

Associate Professor, Psychology  
University of Wyoming  
1000 E. University Ave., Department 3415  
Laramie, WY 82071  
(307) 766-4106  
[christina.mcdonnell@uwyo.edu](mailto:christina.mcdonnell@uwyo.edu)

**Samantha Reed, DNP, PMHNP-BC**

Clinical Assistant Professor  
Fay W. Whitney School of Nursing  
University of Wyoming  
1000 E. University Ave. Dept. 3065  
Laramie, WY 82071  
(307) 703-0033  
[sbaker18@uwyo.edu](mailto:sbaker18@uwyo.edu)

**Jesse Springer, Deputy Division Administrator**

Healthcare Financing Division (Medicaid & CHIP)  
Wyoming Department of Health  
6101 Yellowstone Road, Suite 220  
Cheyenne, WY 82009  
(307) 777-7460  
[jesse.springer@wyo.gov](mailto:jesse.springer@wyo.gov)

**Valerie Thompson-Ebanks, Division Director**

Division of Social Work  
University of Wyoming  
1000 E. University Ave., Dept. 3632  
Laramie, WY 82071  
(307) 766-5639  
[vthomps4@uwyo.edu](mailto:vthomps4@uwyo.edu)

**Feliciano Turner**

Unit Manager, Maternal and Child Health Unit  
Public Health Division  
122 West 25th Street, 3rd Floor West  
Cheyenne, WY 82002  
307-777-3733  
[feliciano.turner@wyo.gov](mailto:feliciano.turner@wyo.gov)

## WIND Faculty and Staff Meeting Participants

**Canyon Hardesty, WIND Associate Director**

Director of Community  
Education and Training  
(307) 766-5003  
[Canyon.Hardesty@uwyo.edu](mailto:Canyon.Hardesty@uwyo.edu)

**Michelle Jarman, WIND Executive Director**

Professor, Disability Studies  
(307) 766-5060  
[mjarman@uwyo.edu](mailto:mjarman@uwyo.edu)

**Eric Moody, Ph.D., WIND Associate Director**

Director, Research and Evaluation  
(307) 766-2932  
[eric.moody@uwyo.edu](mailto:eric.moody@uwyo.edu)

# **Wyoming Institute for Disabilities**

## **Five Year Plan, 2022-2027**

### **Abstract**

The Wyoming Institute for Disabilities at the University of Wyoming will improve the education, early intervention, health and wellness, employment, and assistive technology outcomes of individuals with developmental disabilities and their families throughout the five-year project period, 2022-27. Our mission is to assist individuals with developmental and other disabilities and their families by promoting and supporting full community inclusion, community membership, independence, productivity, and social participation.

Project goals include

- 1) providing interdisciplinary, family curriculum in leadership;
- 2) educating undergraduate and graduate students in disability studies;
- 3) providing training to professionals and communities;
- 4) providing best-practices-based services;
- 5) conducting basic and applied research, and evaluation and/or public policy analysis;
- 6) disseminating knowledge-based and accessible information; and
- 7) ensuring our business practices support cultural competence and inclusion.

The anticipated outcomes related to the goals include increasing the percentage of URLEND and Disability Studies students from underrepresented populations, as well as enhancing the knowledge, attitudes, and skills of undergraduate, graduate, and post graduate students. Additionally, the program aims to expand faculty engagement in the disability studies academic program and increase collaborations within Wyoming, other states, and globally. Another key outcome is improving the knowledge, skills, and use of best practices among professionals while fostering greater diversity among trainees.

Efforts will also focus on strengthening telehealth capacity in Wyoming and expanding the number of topics for which technical assistance is provided. Furthermore, the program seeks to boost research proposals, funding awards, and the dissemination of findings, as well as deepen the engagement of the Consumer Advisory Council in program development, implementation, and evaluation. Increasing the number of accessible products produced and disseminated is also a priority, along with enhancing procurement opportunities and dollars awarded to contractors from underserved populations.

# Practicum and Student Workers

## Rosie Williams

Rosie is a senior at the University of Wyoming and is studying secondary education and english. She is excited to be a teacher who understands all students and works to have an accomodating, inclusive and safe classroom. She is a member of Chi Omega on campus and enjoys working hard to succeed with all the girls there, volunteer work with make-a-wish and supporting others wherever she can. She has been at WIND for almost 2 years now. Rosie started out with the FASI project doing outreach coordination, data research and entry, and hosting FASI meetings. She now helps with social media and supporting WIND staff with various projects.



## Kylee Paulson



Kylee recently graduated from the University of Wyoming with a bachelor's degree in Speech, Language, and Hearing Science and is currently pursuing her master's in Speech-Language Pathology at UW. She is involved with several WIND projects, working on Inclusive Health, LEND, and collaborations with the Colorado and Wyoming Epilepsy Foundation. Kylee is a Wyoming native who is excited to bring her passion for supporting people with communication needs to her community. When she's not studying, she enjoys spending time outdoors rafting and hiking with her dog Milo.

## Alexia Mendez

Alexia is a practicum student from the University of Wyoming Masters of Social Work program. At WIND she will be working closely on IPSE (Inclusive Post Secondary Education) programs and BHAT (Behavioral Health Aid Training) programs. She is looking forward to working with both programs and getting more involved with WIND. Before joining WIND, she grew up in Casper, WY and graduated from Casper College with two associates in Biology and Pre-Medicine in 2021. Alexia transferred to the University of Wyoming shortly after and graduated with a bachelor's degree in physiology with a minor in psychology.



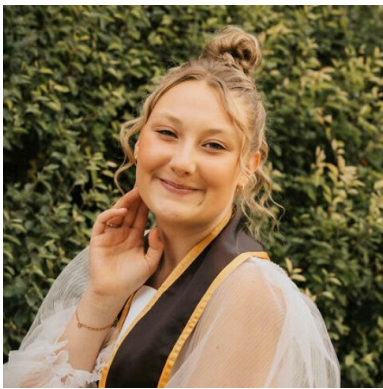
# Disability Studies December Graduates

## Cat Van Houten

Cat is currently a senior at the University of Wyoming pursuing a degree in Speech Pathology with a minor in Disability Studies. She has worked at WIND for the last year and a half, initially as a research assistant for the FASI project and now as a program associate. Cat contributes to a variety of projects and areas at WIND including ECHO & the IPSE program. Following graduation, she plans to pursue a master's degree in Speech-Language Pathology with the goal of working in a clinical setting supporting children's communication needs.



## Sydney Black



Sydney is majoring in Speech-Language and Hearing Sciences. After graduation, she will be applying to graduate school for Speech Pathology at Wyoming, Montana, Utah, Arizona and Washington. One aspect of the minor that has impacted her professional growth and career is being a part of the Inclusive Post-Secondary Education Program (IPSE). She says IPSE has been an amazing hands-on opportunity that has played a role in opening her eyes to the advocacy of the disability community. She is excited to apply this knowledge and experience to her major. "WIND has had a wonderful impact on my undergraduate career, and I express immense gratitude towards the program."

## Autumn Dearden

Autumn received her minor in disability studies which has shaped her view on the world in many different ways. As a psychology major, it helped to think outside the box and brought thoughtful insights into her major that helped her think on a wider level. Autumn's ultimate goal is to become an occupational therapist where she can help clients live a more independent life and be an advocate for them in the everyday world. Most of her favorite classes at the University of Wyoming were her disability studies courses, and she is so glad that she added this minor to her education.





# Excellence in Telehealth Award 2025



We're excited to present the 2025 Excellence in Telehealth Award to **Chelsea Paulus, MS, CCC-SLP!**

Chelsea is the founder and owner of Connect Speech Therapy which provides home-based, clinic-based, and virtual speech and language therapy services. Chelsea's innovative practice provides high-quality care to people in Wyoming and Montana who would otherwise not have access.

Chelsea and her team provide speech and language therapy services to over 400 clients, with ages ranging from 0 to 90 years. They've worked to engage and educate school administrators about the role of telehealth in implementing accessible, sustainable, and evidence-based therapy models.

These efforts have been successful, as they currently deliver hybrid and virtual care to several school districts and Child Development Centers in Wyoming and Montana. Beyond her role providing direct services to rural residents in Wyoming and Montana. Chelsea is the chair of the Committee on Telepractice on the board for the Wyoming Speech-Language-Hearing Association (WyoSHA). In this role, Chelsea's "strong desire to improve speech-language services for people in our state" has shone. Her advocacy for the integration of telehealth into standard therapy practices has created waves throughout Wyoming and Montana and continues to expand healthcare access to rural and frontier communities.

Chelsea worked as an early intervention specialist in Alaska before earning her Master of Science in speech-language-pathology from Bowling Green State University in 2016. In November of 2017 she founded Connect Speech Therapy in Sheridan, WY after recognizing the need for speech-language services in Wyoming. Originally based in Sheridan, Connect Speech Therapy has recently opened a clinic in Lander, and currently employs 14 speech-language pathologists, and speech-language pathology assistants.

Congratulations, Chelsea! Thank you for your commitment and dedication to improving access to care in Wyoming.





# 2025 Telehealth Awareness Week

September 21st, 2025, marked the kick-off of Wyoming's Fifth Annual Telehealth Awareness Week, hosted by the Wyoming Telehealth Consortium. This week is an opportunity to recognize the role of telehealth in modern healthcare, educate providers and consumers about available resources, and support the implementation of telehealth across Wyoming.

Beyond the convenience of meeting with your healthcare provider from the comfort of your own home, telehealth has emerged as an essential tool for addressing the unique healthcare challenges in our state. There is a healthcare provider shortage in Wyoming, making it difficult to access essential healthcare services. Additionally, winter conditions can make travelling to a long-awaited appointment unsafe, if not impossible. Through telehealth, even the most rural patients can connect with their provider for a check-in or visit with a specialist who may be located hundreds of miles away.

Though we've all adapted to an increasingly tech-savvy world, barriers exist that limit access to quality care. Limited access to reliable internet, and outdated technology, can prevent people from participating in a telehealth appointment. To address this, the Wyoming Telehealth Network (WyTN) has partnered with five county libraries and one senior center to install Public Access Telehealth Spaces (PATHS). These spaces are free-to-use, sound-proof, and equipped with the necessary technology to participate in a telehealth appointment. PATHS also benefit from the support of knowledgeable and friendly staff who are passionate about improving healthcare access.

Telehealth is an accessible, convenient, and effective tool to increase healthcare access in Wyoming. Together, we can continue to work towards a modernized healthcare system that works for all Wyomingites!



# WIND Project Directory

## **Accessible Healthcare for People with Disabilities: Building Capacity in Rural Healthcare**

Tai Baker, Emily Lube, Canyon Hardesty

Funded by the WITH Foundation, this project is designed to build capacity with healthcare providers in rural and frontier Wyoming to provide accessible, high-quality, and culturally humble healthcare for people with disabilities. The project will address the lack of disability specific healthcare knowledge that adults with developmental disabilities face when they seek medical care in their communities. The project includes a virtual symposium and a multi-module asynchronous course.

## **Addressing Bias in Gold-Standard Autism Assessments to Improve the Early Identification of Young Black and Latinx Children**

Eric Moody, Brian Barger (GSU)

With the help and support of NIH and GSU, this initiative aims to tackle bias in gold-standard autism assessments. With a dedicated focus on improving early identification for young Black and Latinx children, the project strives to pave the way for more accurate, inclusive diagnostic practices, ensuring every child receives timely and equitable support on their developmental journey.

## **Arkansas Opioid Recovery Partnership/WYSAC**

Eric Moody, Claire Barrile, Amy Rieser

WIND is providing technical assistance to the Wyoming Survey and Analysis Center (WYSAC) to support a project with Arkansas related to opioid settlement projects, which includes creating and managing REDCap projects for ongoing opioid evaluation related to opioid settlement funds in the state of Arkansas.

## **Behavioral Health Aide Training Program - Wind River Family and Community Health Care**

Amy Rieser, Canyon Hardesty, Brittany Brigham

In collaboration with Wind River Family and Community Health Care (WRFCHC), WIND will develop a curriculum and asynchronous training program to support the behavioral health aid level I and II training programs that will be delivered through WRFCHC. This program will include multiple partners in the development process: the WRFCHC, including Education Excellence, BHAT clinic staff, and WRFCHC behavioral health department.

### **Disability Studies Program**

Michelle Jarman, Vik Peer (Part-Time Distance Instructor); Indira Kheri (Graduate TA)

Disability studies is a diverse interdisciplinary field that investigates broad questions about the nature, meanings, and consequences of disability from interrelated social, historical, cultural, and political perspectives. The undergraduate minor in disability studies examines disability issues from multiple theoretical frameworks. WIND is also developing a proposal for a graduate certificate program in disability studies.

### **Early Childhood Vision Screening**

Canyon Hardesty, Amy Rieser

The Early Childhood Vision Screening is an ongoing collaboration with the Wyoming Department of Education to provide online training and virtual content support to early care providers. Content has been developed in collaboration with Wyoming pediatric providers. Core topics include introduction to screening, communication with families, recommended tools for young children, automatic referrals, comprehensive resources.

### **Empowering Families through the Charting the LifeCourse Framework**

Cari Glantz

With funding from the Wyoming Governor's Council on Developmental Disabilities, and in partnership with the Parent Information Center (PIC), this project will support the health and well-being of families across Wyoming by integrating the Charting the LifeCourse (CtLC) Framework into a series of virtual and in-person learning opportunities, using the CtLC core belief that all people have the right to live, love, work, play, and pursue their own life experiences. The goal of this project is to equip families, educators, and community partners with practical tools and strategies that support positive life experiences and prevent negative life experiences by improving family health outcomes at every stage of life.

### **Colorado/Wyoming Epilepsy Collaborations**

Emily Lube, Canyon Hardesty

WIND is engaged in collaboration with the Epilepsy Foundation of Colorado to provide programs, awareness raising and information dissemination in the State of Wyoming.

### **Equality State Research Network (ESRN)**

Eric Moody, Canyon Hardesty, Tai Baker, Amy Rieser, Liberty Hicks, Claire Barrile

The Equality State Research Network (ESRN) is a statewide network committed to engaging in community-based research to improve the overall health of Wyoming residents. WIND is also developing a proposal for a graduate certificate in disability studies.

### **Evaluation of Disability Innovation Fund (DIF) Grant**

Eric Moody, Claire Barrile, Amy Rieser

This project is an external evaluation of Minot State's five-year grant from the Department of Education to support competitive integrative employment in North Dakota. The Wyoming Institute for Disabilities (WIND) will serve as the external evaluator for the North Dakota Center for Persons with Disabilities (NDCPD) at Minot State University under the Disability Innovation Fund (DIF) initiative. This partnership supports the transformation of education, career development, and competitive integrated employment for youth and adults with disabilities.

### **iCan Connect**

Terri Wofford

Wyoming's iCanConnect program provides communications technology free of charge to income eligible people of all ages who have combined vision and hearing loss. This program will distribute communications equipment to qualified individuals and provide equipment installation, training, and support to help recipients make the most of this technology.

### **Implementing Community Based Telehealth Infrastructure to Expand Healthcare to Vulnerable Populations**

Tai Baker, Kristen Glennie, Canyon Hardesty

The project supports the establishment of eight (8) community telehealth access sites located at public libraries, UW extension offices, and a local detention center. The equipment purchased for this project will become the property of the community entity (e.g. library, extension office, detention center) where it is installed. Identified sites include three public libraries (Natrona, Park, Sheridan counties), four UW extension offices (Northeast, Southeast, Northwest, Southwest regions) and one detention center (Sweetwater County).

### **Inventory of Client and Agency Planning (ICAP)**

Eric Moody, Lisa Lehman

The ICAP is a standardized measure used by the Wyoming Department of Health to assess adaptive functioning and behavior issues for eligibility in the Developmental Disabilities service system. The Developmental Disabilities Division contracts with WIND to conduct ICAP interviews throughout the state and is responsible for conducting initial, emergency, and continuing eligibility interviews.

## **Learn the Signs. Act Early – Ambassador Project**

Cari Glantz

The Act Early Ambassador project is designed to develop a network of state-level experts to improve early identification practices. Act Early Ambassadors serve as state liaisons to the "Learn the Signs. Act Early" initiative and work as community champions with programs that serve young children and their parents, such as Head Start and Early Head Start, WIC, home visiting, and others, and health care and childcare professionals to improve early identification of developmental delay and collaborate with state agencies and campaign partners to improve policy and programs for early identification.

## **Post-Secondary Program Planning - Connecting Pokes @ 7220**

Canyon Hardesty, Michelle Jarman, Eric Moody, Stephanie Wodahl

The purpose of this project is to investigate the feasibility and develop an inclusive post-secondary program, in collaboration with post-secondary partners throughout Wyoming. Faculty and staff at Wyoming Institute for Disabilities (WIND) will lead the creation and facilitation of a statewide alliance that will guide the development of a program plan. The plan will be designed to meet the needs of students with ID, as well as be feasible within the institution(s) implementing this program. Planning support funding and collaboration comes from the North Dakota UCEDD.

## **Project SCOPE**

Canyon Hardesty, Eric Moody, Tai Baker, Amy Rieser, Cari Glantz

Project SCOPE: Supporting Children of the OPIoid Epidemic, aims to train providers nationwide in evidence-based practices for supporting children and families affected by opioid-related issues. WIND collaborates with the Nisonger Center at The Ohio State University and the University of Cincinnati Center for Excellence in Developmental Disabilities for this initiative. Collaborations continue with partners in Ohio and Kentucky.

## **Research and Evaluation**

Eric Moody

At the Wyoming Institute for Disabilities, we are committed to the improvement of our programs through continuous evaluation as well as learning how to better improve the lives of those with disabilities through novel, empirical research. WIND's Research and Evaluation team examines important real-world issues through an interdisciplinary lens, combining applied psychological, statistical, educational, medical, and public health approaches to find solutions to these problems.

## **The Practical Impact of Inequitable Item Responding on the Diagnostic Accuracy of Screening Tools for Identifying Black and Hispanic Children with Autism**

Brian Barger (GSU), Eric Moody

With the help and support of NIH and GSU, this project focuses on addressing disparities; this research endeavors to reshape diagnostic protocols for identifying autism in Black and Hispanic children.

## **University of Wyoming ECHO**

Canyon Hardesty, Eric Moody, Tai Baker, Cari Glantz, Emily Lube, Amy Rieser, Brittany Brigham  
UW ECHO networks are hub-and-spoke knowledge-sharing communities led by experienced teams using multi-point videoconferencing to conduct virtual sessions with stakeholders across the state. These virtual learning communities provide educators, service providers, case managers, administrators, families, and others access to expert advice from professionals throughout the state and country, building capacity in home communities to implement best practices and improve outcomes.

## **University of Wyoming ECHO – New Partnership / WDE- Employability and Emergency Authorization**

Canyon Hardesty, Michelle Jarman, Stephanie Wodahl, Eric Moody, Cari Glantz (Dr. Tiffany Hunt)

Wyoming Institute for Disabilities (WIND) will collaborate with the WDE Special Programs Division to design and deliver two Project ECHO courses that align with the goals of the State Personnel Development Grant. Goals include: ECHO Network 1 – Improve knowledge of the Individuals with Disabilities Education Act (IDEA) for teachers under Special Education Exception Authorization; ECHO Network 2 – enhancing teacher capacity to support employability skills for students with disabilities.

## **Utah Regional Leadership Education in Neurodevelopmental and Other Disabilities (URLEND)**

Canyon Hardesty

LEND is a nationally recognized group of trainees, gaining valuable experience in the disabilities field through participation in the program. URLEND at Wyoming Institute for Disabilities provides leadership and skill-building opportunities for Wyoming graduate level pre-professionals and professionals. Each year, student and professional trainees from a variety of health-related disciplines participate in a training program to increase their knowledge and skills in providing services and support to children with neurodevelopmental disabilities and their families.



### **WIND Consumer Advisory Council**

Sandy Hubert, Michelle Jarman, Kathy Madere, Sandy Thiel (Council Chair)

Members of the WIND Consumer Advisory Council, over half of whom are individuals with a disability or family members, consult with the WIND Executive Director regarding the development of the UCEDD's five-year plan, reviews, and comments annually on WIND's progress in meeting the projected goals, and makes recommendations to the WIND Executive Director regarding proposed revisions to the five-year plan.

### **Wyoming Accessibility Center (WAC)**

Canyon Hardesty, Terri Wofford

The Wyoming Accessibility Center (WAC) provides fee-for-services training, technical assistance, services, and assessments to improve accessibility for individuals with disabilities.

### **Wyoming Accessible Education Materials (AEM) Clearinghouse**

Canyon Hardesty, Shelby Kappler, Terri Wofford

The Wyoming AEM Clearinghouse works with school districts in Wyoming to provide accessible educational materials to students with print disabilities. We are a designated state-authorized user for a federally funded, national repository of accessible educational materials. The Wyoming AEM Clearinghouse can access the repository and provide source files to districts.

### **Wyoming Assistive Technology Resources (WATR)**

Terri Wofford, Gisele Knopf, Shelby Kappler, Krista Zwieg, Brittany Brigham

Wyoming Assistive Technology Resources (WATR) is Wyoming's Assistive Technology Act program, established through the AT Act of 1998, as amended in 2004, to increase awareness and access to assistive technology. WATR provides assistive technology training and technical assistance, public awareness, device loans and device demonstrations.

### **Wyoming Family to Family Health Information Center (WY F2F HIC)**

Canyon Hardesty, Eric Moody, Cari Glantz

WY F2F HIC helps to provide access to evidence-based health information, support, and training for families of children and youth with special healthcare needs. Through partnerships between families and professionals, it empowers them to make informed health decisions, improving their quality of life and satisfaction with care.

### **Wyoming Developmental Disabilities Network**

Michelle Jarman

The Governor's Planning Council on Developmental Disabilities, Protection & Advocacy System, Inc., and the Wyoming Institute for Disabilities (WIND) are sister organizations authorized under the Developmental Disabilities Assistance and Bill of Rights Act. The Administration on Developmental Disabilities/Administration on Children and Families provides funding to each of these organizations. In Wyoming, the three agencies work together to provide a comprehensive array of support to people with developmental disabilities, family members, providers, and state agencies. Directors of the three agencies meet quarterly or more to identify and address state priorities, emerging needs, and immediate issues.

### **Wyoming Technology Access Program (WYTAP)**

Terri Wofford, Gisele Knopf

WYTAP is a partnership among Wyoming Assistive Technology Resources (WATR), Wyoming Independent Living, Inc. (WIL), and First Interstate Bank of Laramie to provide a financial loan program for individuals to purchase assistive technology devices and services. WYTAP buys down the interest rate to lower than the current prime rate.

### **Wyoming Telehealth Network (WyTN)**

Tai Baker, Kristen Glennie, Canyon Hardesty

The Wyoming Telehealth Network supports healthcare entities, providers, and specialists to increase access to care and improve health outcomes for Wyoming residents, through professional development, collaboration, and leveraging of telecommunications technology.