

SHARE:

[Join Our Email List](#)



Monthly Newsletter

May 2021



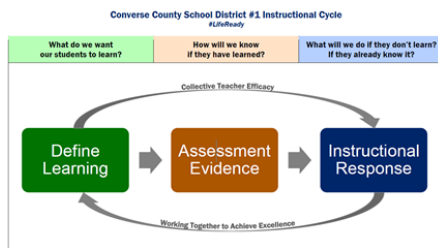
Website and Social Media Expansion

During the times of COVID-19, one thing that has become clear is the opportunity for technological communication to relay information throughout the state. WSUP has taken this time to grow our social media interactions and our website to meet the needs of professional educators at all levels.

[READ MORE](#)

Traversing the Partnership: Professional Development with Andrea Gilbert

Andrea Gilbert is the Assistant Superintendent of Converse County School District #1, and she has been



working to fulfill the professional development needs of her staff throughout the school district. When meeting with Andrea, she introduces herself as a person with a great appreciation for research and this mentality is seen throughout the work she has done.

[READ MORE](#)

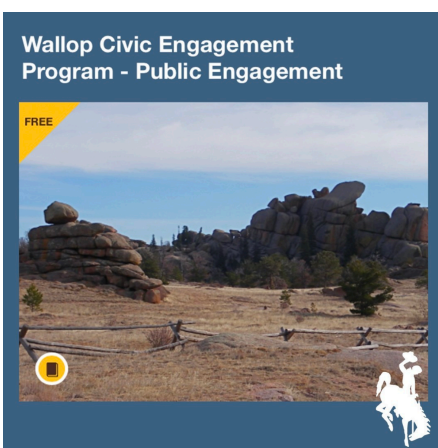


Social-Emotional Learning and Self-Care Webinar

On March 24th, 2021, Inspire Teaching and Learning and Harmony Social Emotional Learning hosted a webinar discussion on social-emotional learning and self-care in the classroom.

This discussion was presented by Dr. Tish Jennings at the University of Virginia and had the following guests: Tom Whissinand (National University Grand Prize Teacher Award Winner 2020), Alejandro Diasgranados (DC Teacher of the Year 2020), and Dr. Lori Piowski (Acting Dean of Teacher Education Department of National University).

[READ MORE](#)



NNER Updates: Wallop Civic Engagement Library

On March 4th, the University of Wyoming Wallop Civic Engagement Program K-12 Project Team and Trustees Education Initiative (TEI) led the NNER First Thursday webinar. This webinar focused on bringing civic engagement back into classrooms along with a focus on cross-college collaboration.

[READ MORE](#)

If you would like to subscribe to the WSUP Newsletter, click below to complete the WSUP Newsletter subscription form:

SUBSCRIBE NOW!

Wyoming School-University Partnership | [WSUP Homepage](#)

