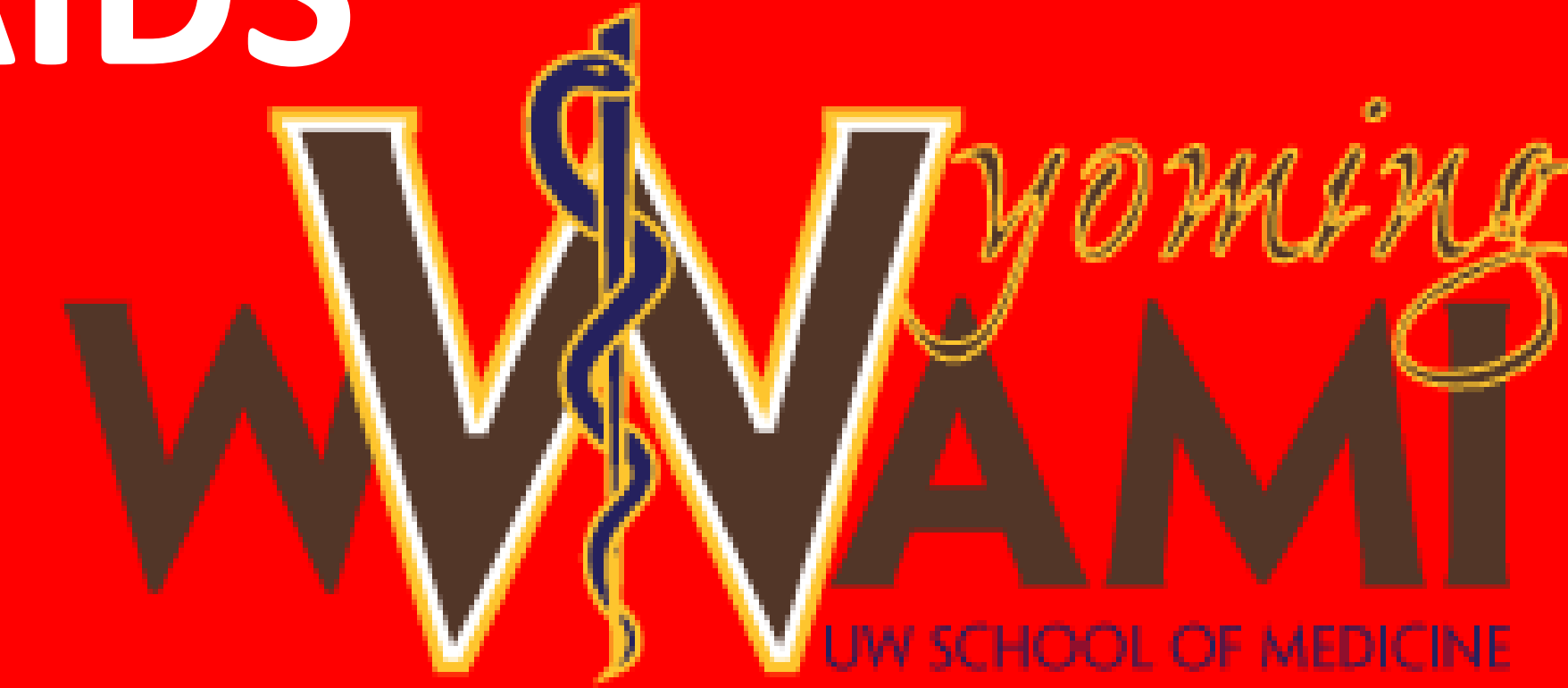


Social Interventions in Treatment of HIV/AIDS

Population: Cheyenne, Wyoming

Bradley Lutz | RUOP iii | 2020 | UW School of Medicine



Hypothesis: Increasing socialization of the Cheyenne HIV/AIDS population will lead to improved health outcomes

Background

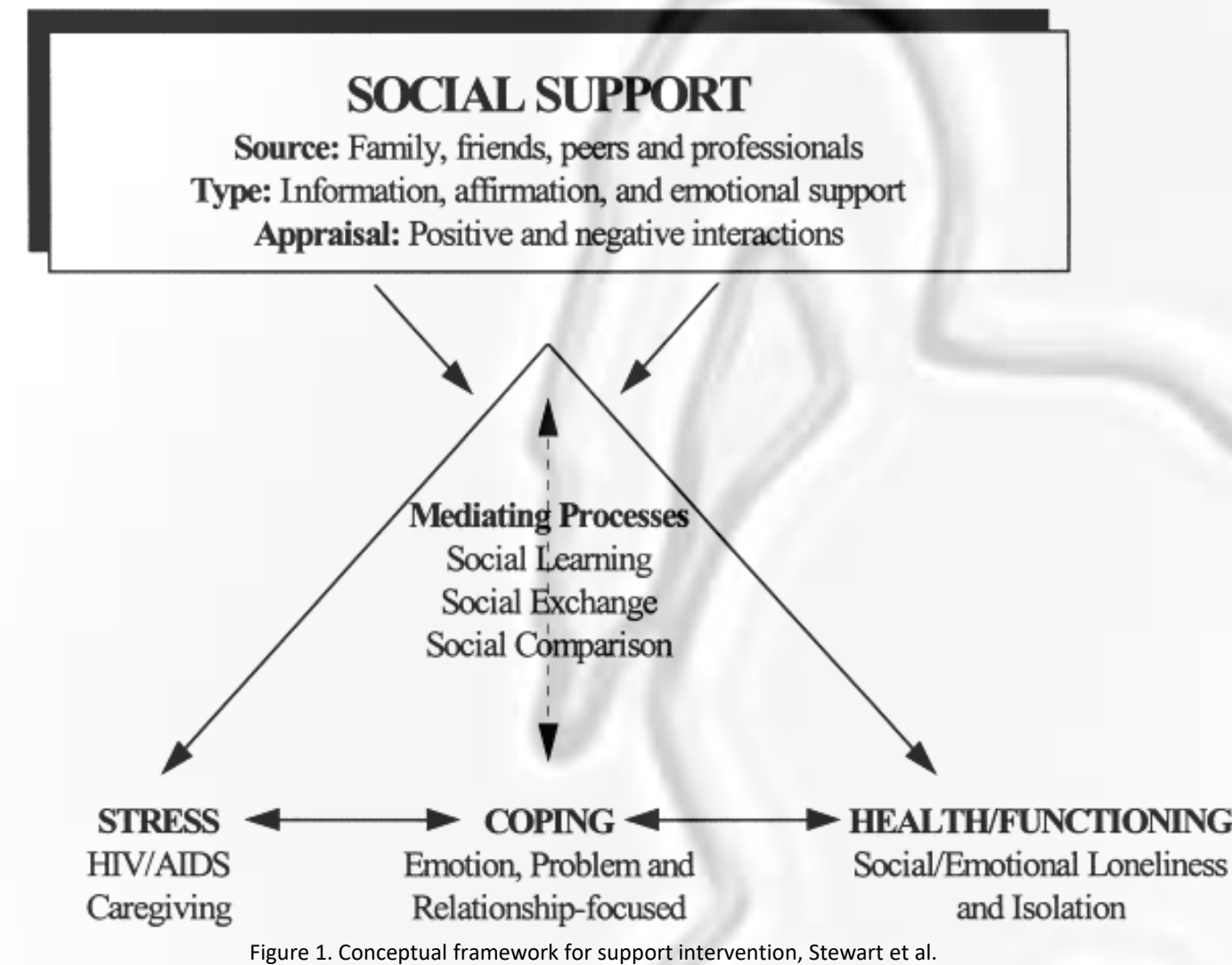
- 475 known cases of HIV/AIDS in Wyoming
- 30% of all known cases are in Cheyenne
- Natrona and Laramie counties are responsible for nearly 60% of newly diagnosed cases each year.
- No formal (or informal) mechanism is in place to routinely gather patients for the purposes of meeting as peers and supporting others.

Community Profile Assets

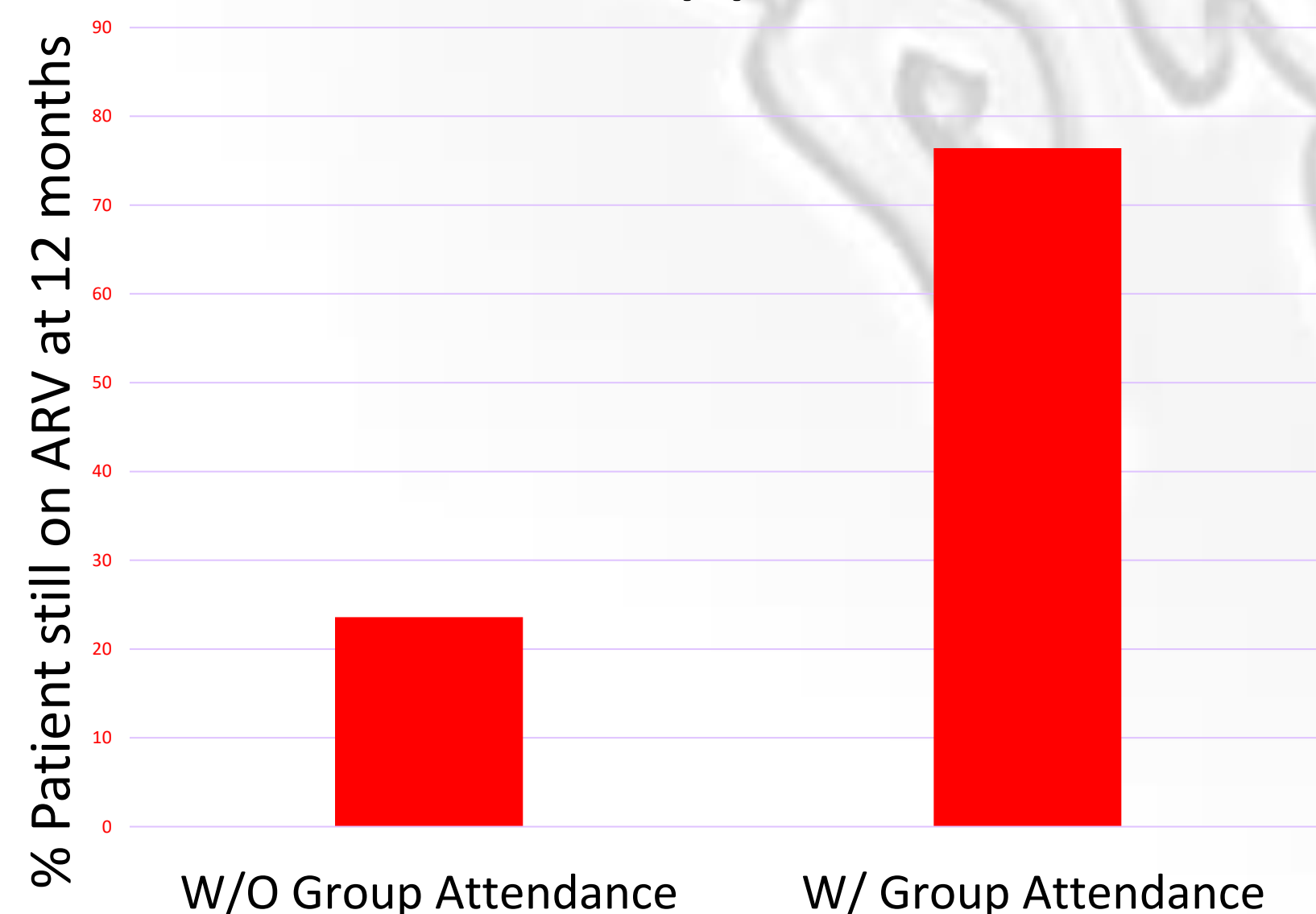
- AIDS Drug Assistance Program (ADAP) works in conjunction with the Wyoming Department of Health Communicable Disease Treatment Program to provide,
 - Medication coverage
 - Housing
 - Transportation
 - Vision and dental care
 - Addiction treatment
 - Mental health

Interventions

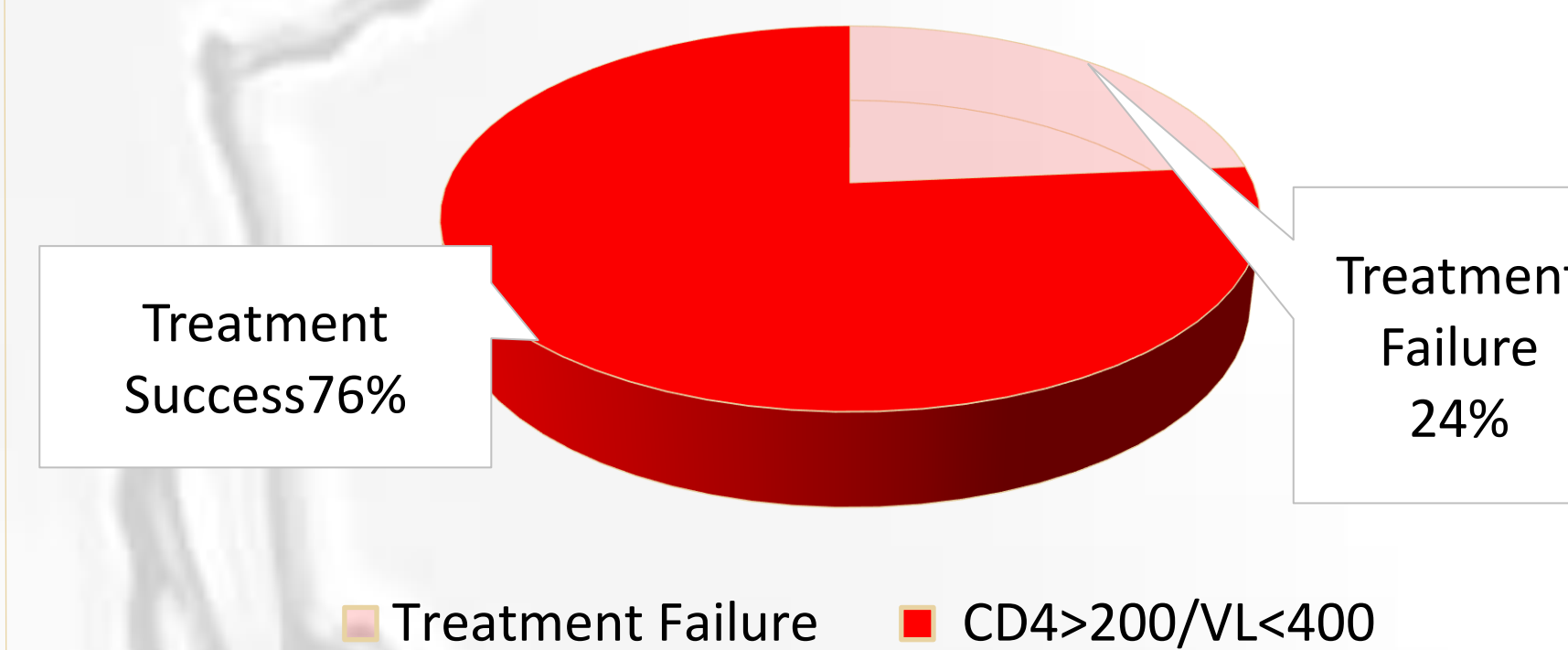
- Initiation of a sustainable support community of patients, allies, and family members for the purpose of providing emotional support



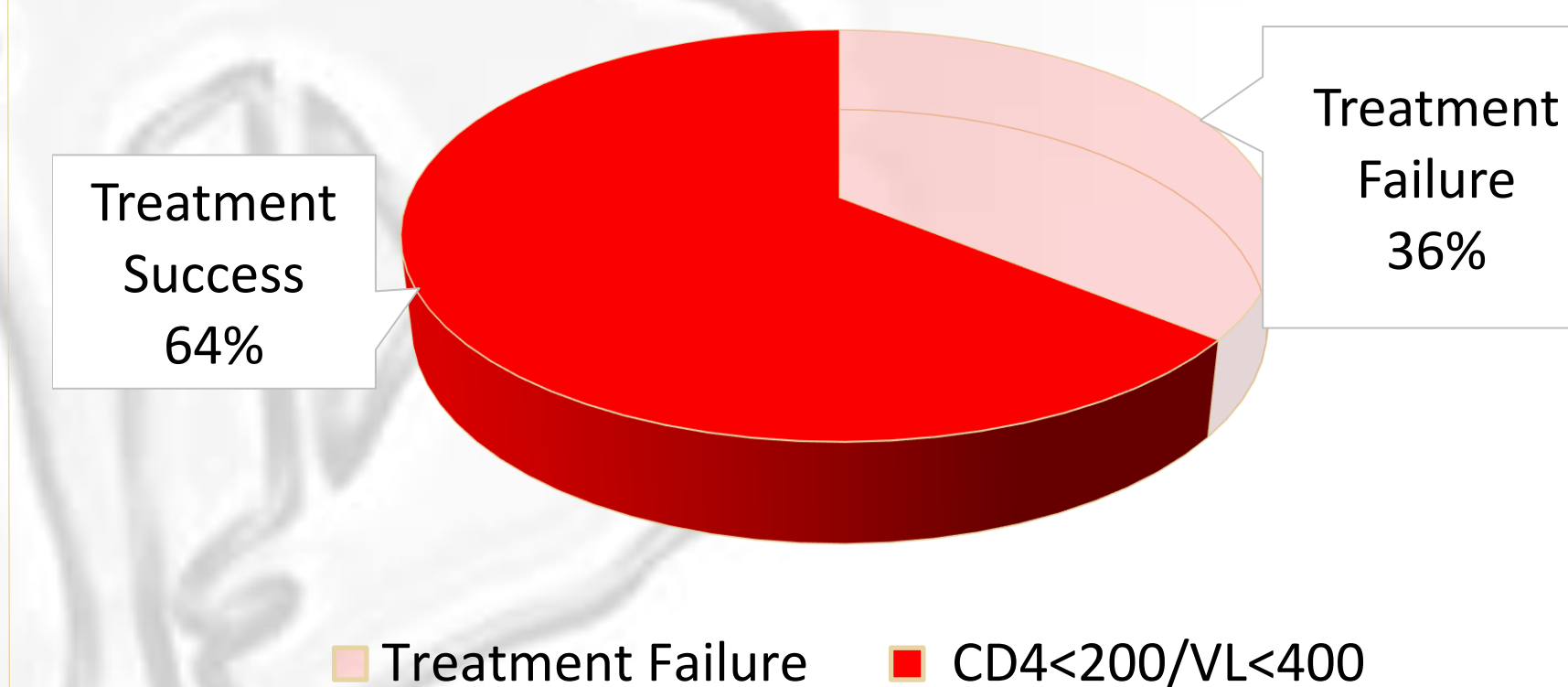
Anti-Retroviral adherence and support



Treatment Successful Patients after 24 Months of group participation



Treatment Successful 12 Month Control Patient (Without Group Support)



Conclusions

- ADAP has contact information and professional relationship with patients and allies. This relationship could be used to initiate group support meetings.
- Through understanding what resources are available, and by interviewing community members, deficiencies in patient care can be identified
- By adding social support to the already established ADAP program, patients will experience decreased morbidity and an overall increase in life enjoyment



Figure 2. Seal of City of Cheyenne WY.