



WYNDD Projects

By

Lusha Tronstad

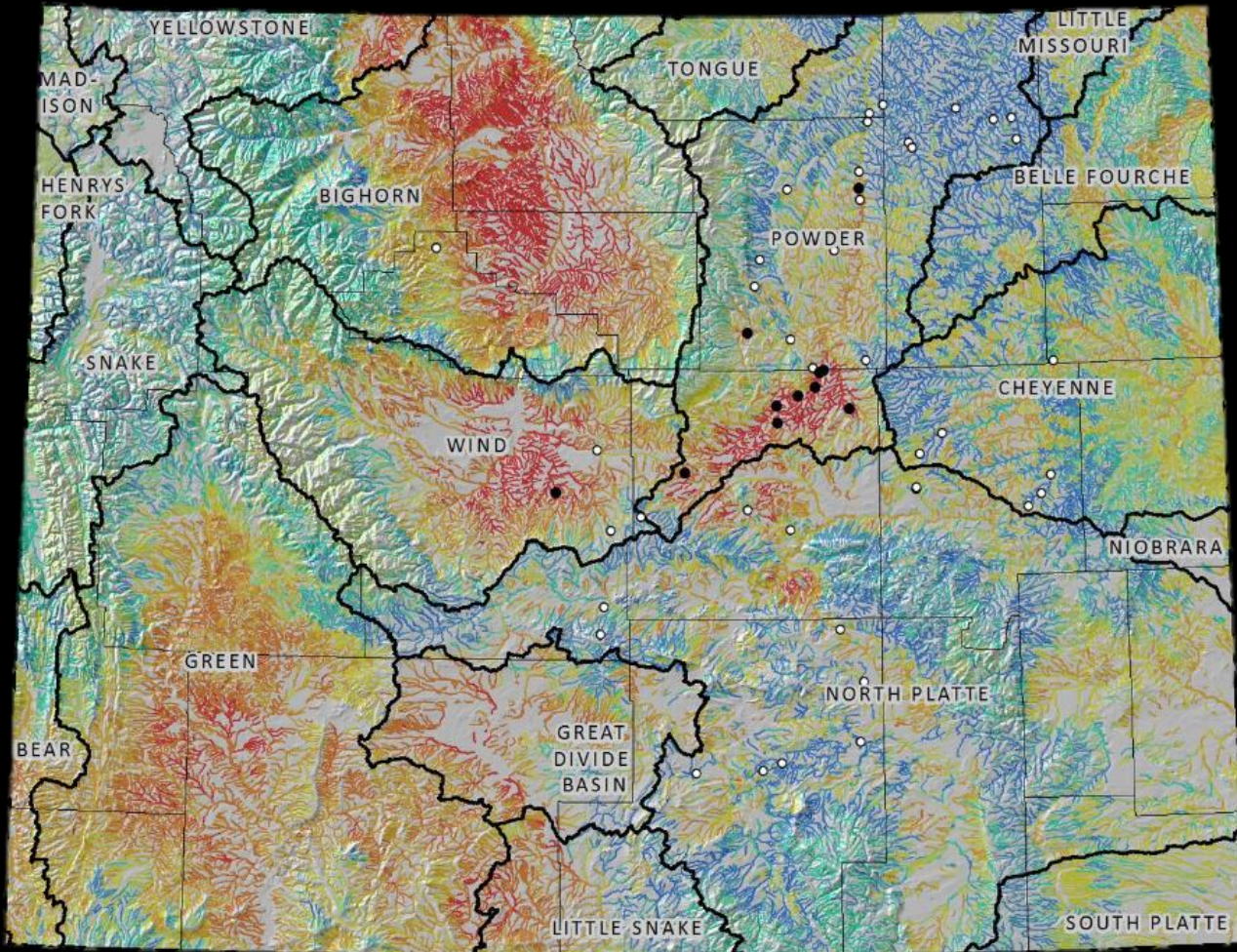
Lead Invertebrate Zoologist

Wyoming Natural Diversity Database
(WYNDD)



Two sides of WYNDD

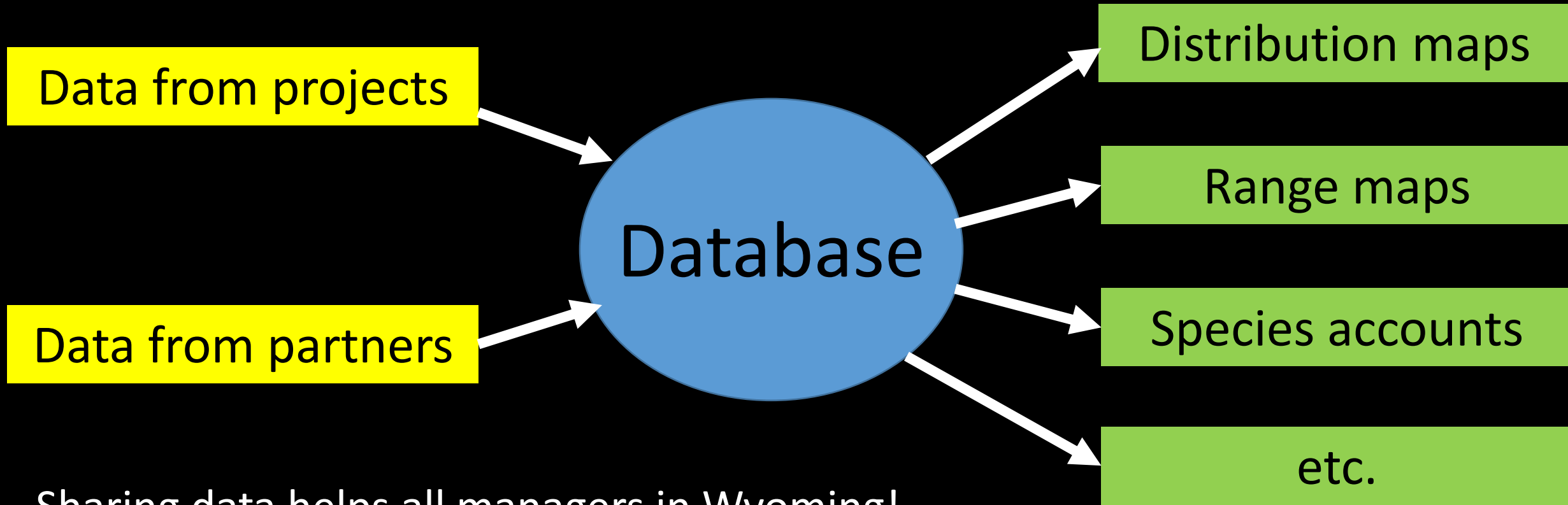
- Core Products and Services



- Projects



How do projects and products & services relate?



Sharing data helps all managers in Wyoming!

Projects

- 50-100% of our permanent biologist's salaries are funded by projects
- Collect information in Wyoming on:
 - Rare plants and animals
 - Vegetation communities
- Our projects focus on special status species
- Currently 67 projects



Vegetation Ecology



Botany

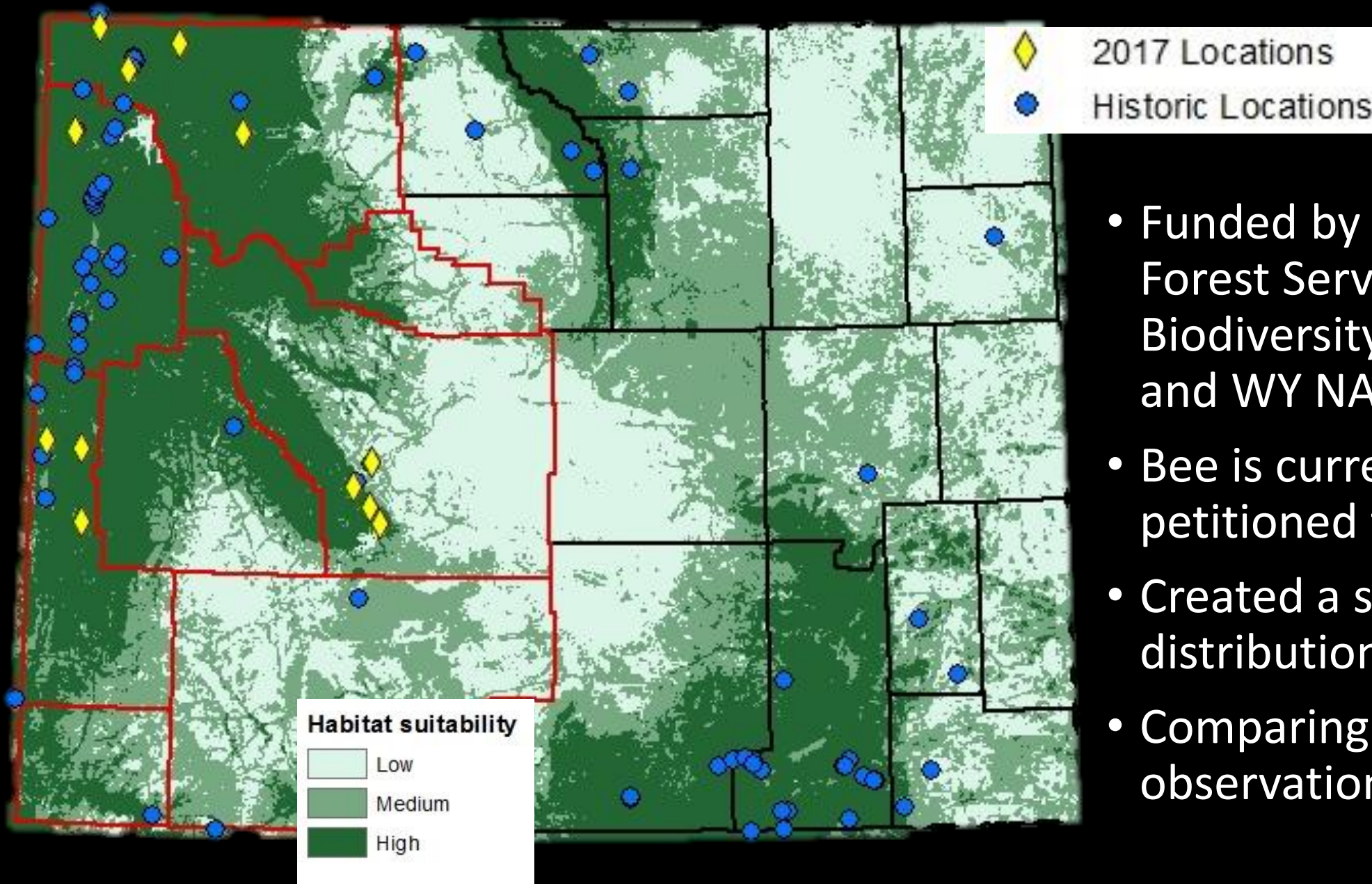


Vertebrate Zoology



Invertebrate Zoology

Current Status of the Western Bumble Bee



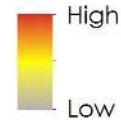
- Funded by BLM, WLCI, Forest Service, Biodiversity Institute and WY NASA
- Bee is currently petitioned for listing
- Created a species distribution model
- Comparing to historical observations

Distribution of bats in Wyoming

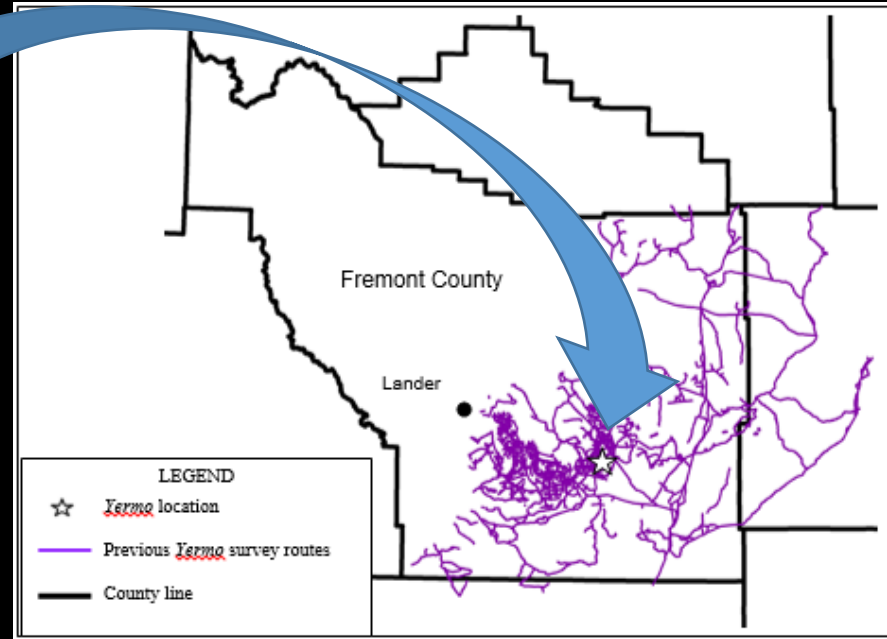
- BLM funded
- Mist-netting and acoustic surveys in under-sampled areas
- Produced new maps with existing data (database & WGFD) and new records

Townsend's Big-eared Bat

Predicted
Probability of
Occurrence



Desert Yellowhead: Listed Threatened



Digitized records of positive & negative data

Monitoring & surveys

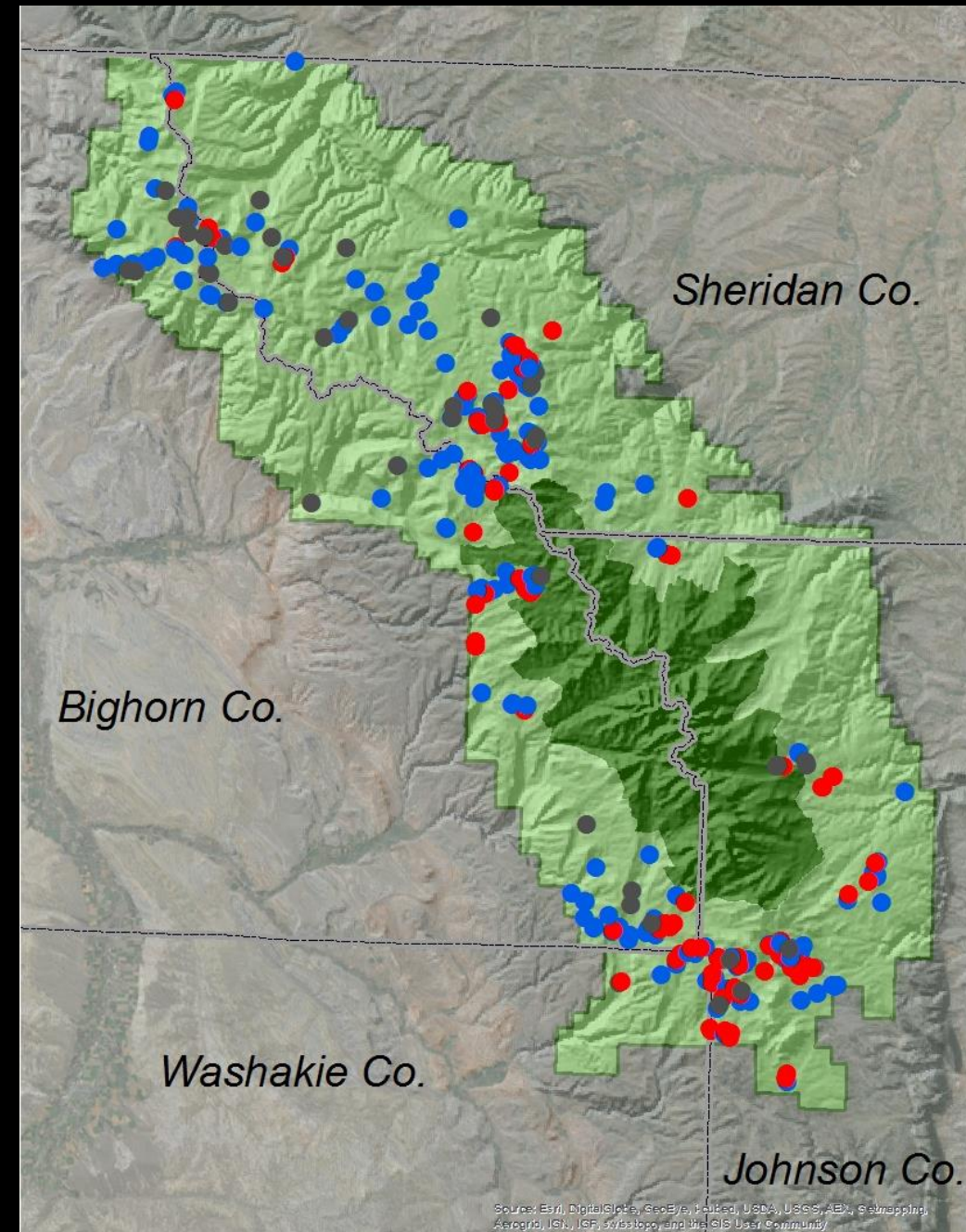
Distribution modeling

Pollination

BLM funded

Groundwater Wetlands in the Bighorns

- High-value ecological system in Wyoming
- Inventory of soil & hydrologic features, vegetation structure, and disturbances
- Cost-share with Bighorn National Forest



Project Funders

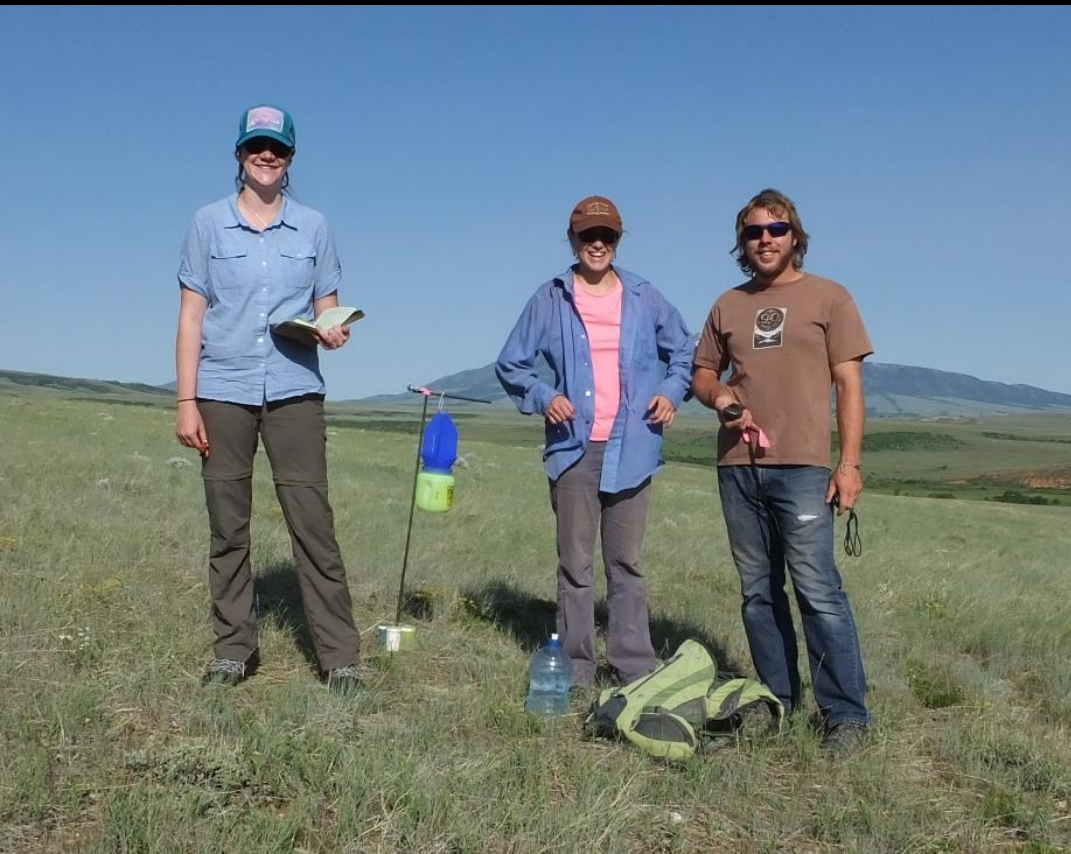
- Wyoming Game and Fish Department
- US Department of the Interior
 - BLM
 - National Park Service
 - US Fish and Wildlife Service
- US Department of Agriculture
 - US Forest Service
- Environmental Protection Agency
- Wyoming Governor's Office (ESA account)
- Wyoming Department of Environmental Quality
- Wyoming Infrastructure Authority
- US Department of Defense
- Wyoming Community Foundation

~75% of our
project funds



UW Students

- Training the next generation of biologists
 - Field technicians
 - Laboratory technicians
 - Independent projects



How projects address core products & services

- Take on projects that enhance our core products and services
 - Studying special status species
 - Working in understudied areas
 - Collecting preexisting data

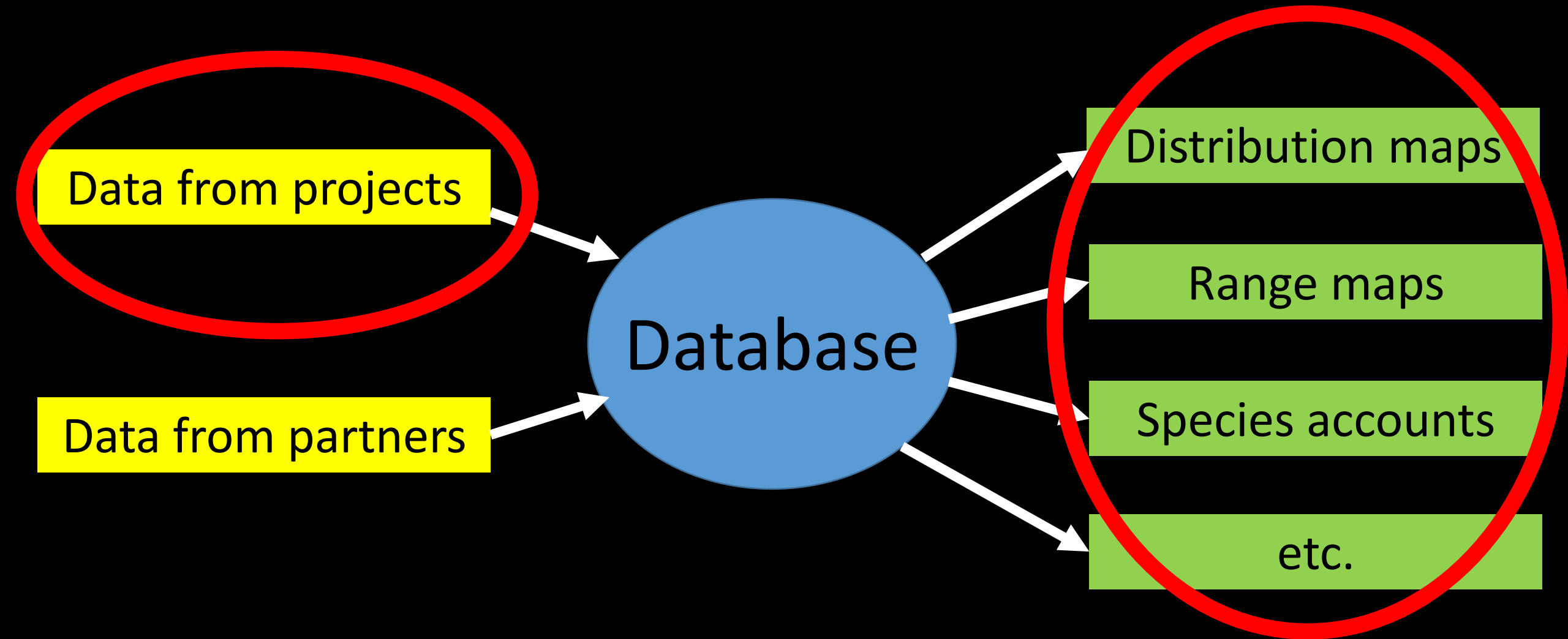


Take home messages

- WYNDD has two complementary sides:
 - Projects
 - Core products and services
- Projects produce data that is entered into WYNDD's database
- Information in WYNDD's database is used to produce many products available for use
- Please let us know if you would like to contribute data!



Core Products and Services



Questions about projects?

