



WyoCloud Fall Roadshow

November, 2016

WyoCloud is a university-wide initiative to provide modern and sophisticated solutions for today's demands and challenges on our University. Over the next 3 years, the WyoCloud team will be implementing the following Oracle Fusion Cloud systems.

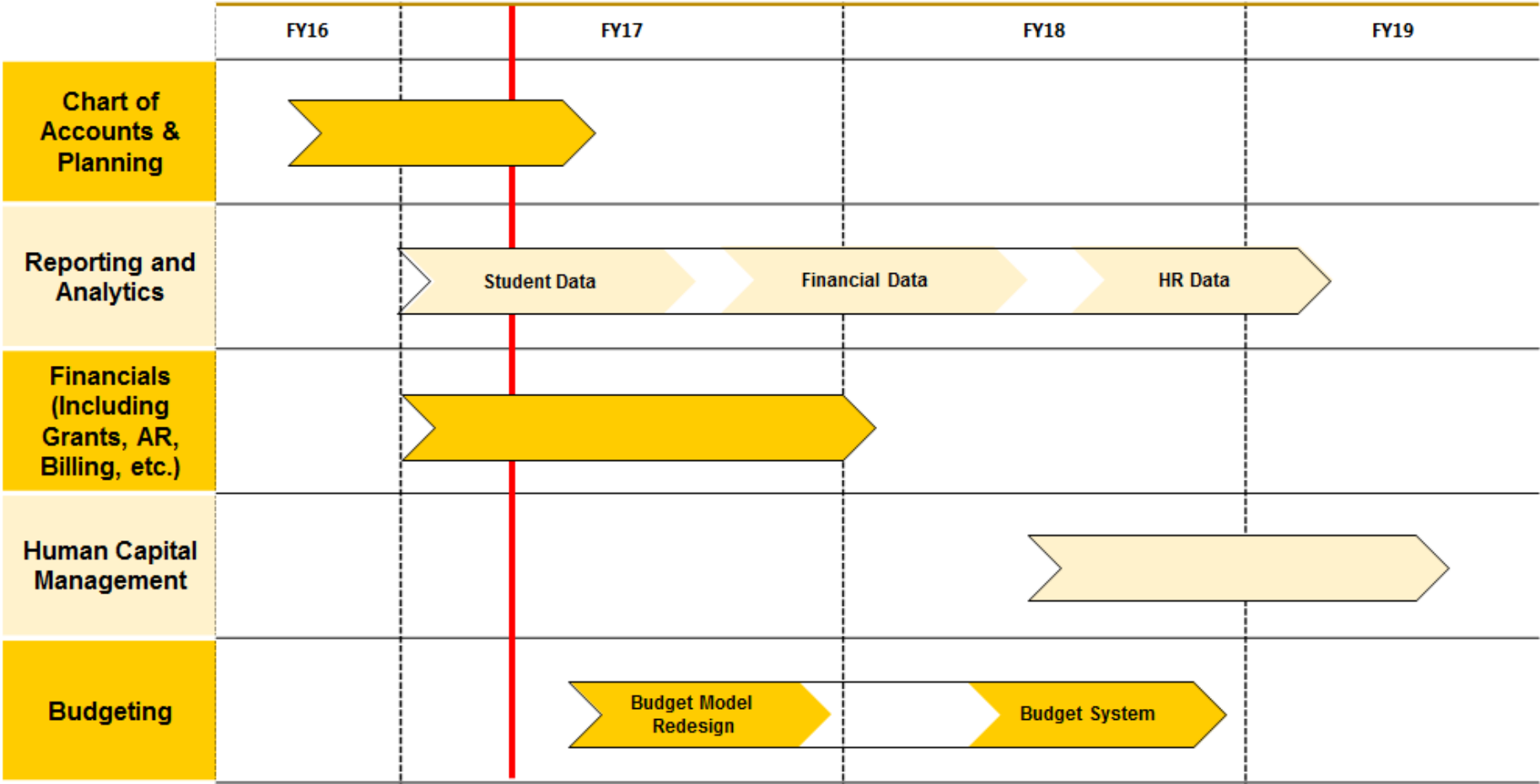
- Enterprise Resource Planning (Financials)
- Human Capital Management
- Grants Management
- Budgeting & Planning
- Supply Chain Management
- Reporting & Analytic





WyoCloud Implementation Timeline

The current implementation timeline outlines tasks over a 36 month period, resulting in a go-live for Financials in July 2017 and HCM in January 2019.





WyoCloud Financial System Progress

Oracle Fusion Cloud Implementation Timeline			Q3 2016		Q4 2016			Q1 2017			Q2 2017			Q3 2017	
Project Task	Start	Finish	Aug	Sep	Oct	Nov	Dec	Jan	Feb	Mar	Apr	May	Jun	Jul	Aug
System Configuration Setup 1 (CS1)	9/26/2016	10/14/2016			→										
Conference Room Testing 1 (CR1)	10/24/2016	11/18/2016			→	→									
System Configuration Setup 2 (CS2)	11/27/2016	1/6/2017					→	→							
Conference Room Testing 2 (CR2)	1/16/2017	2/25/2017						→	→						
System and Integration Testing (SIT)	3/25/2017	4/22/2017									→	→			
User Acceptance Testing (UAT)	5/6/2017	5/27/2017											→	→	
End User Training	5/6/2017	5/27/2017											→	→	
Milestone- Go-Live	7/5/2017	7/5/2017													★

The initial configuration of the financials system is complete and the first round of Conference Room Testing has begun with the core project team.

Accelerate the achievement of University objectives by creating a data driven culture built upon a solution that provides high quality and governed information within the framework of modern business intelligence methodologies and technologies.

Goal 1

Deploy a robust self-service Business Intelligence environment and promote decentralized reporting and analytics

Goal 2

Empower stakeholders to easily retrieve and analyze data for more effective University decision making

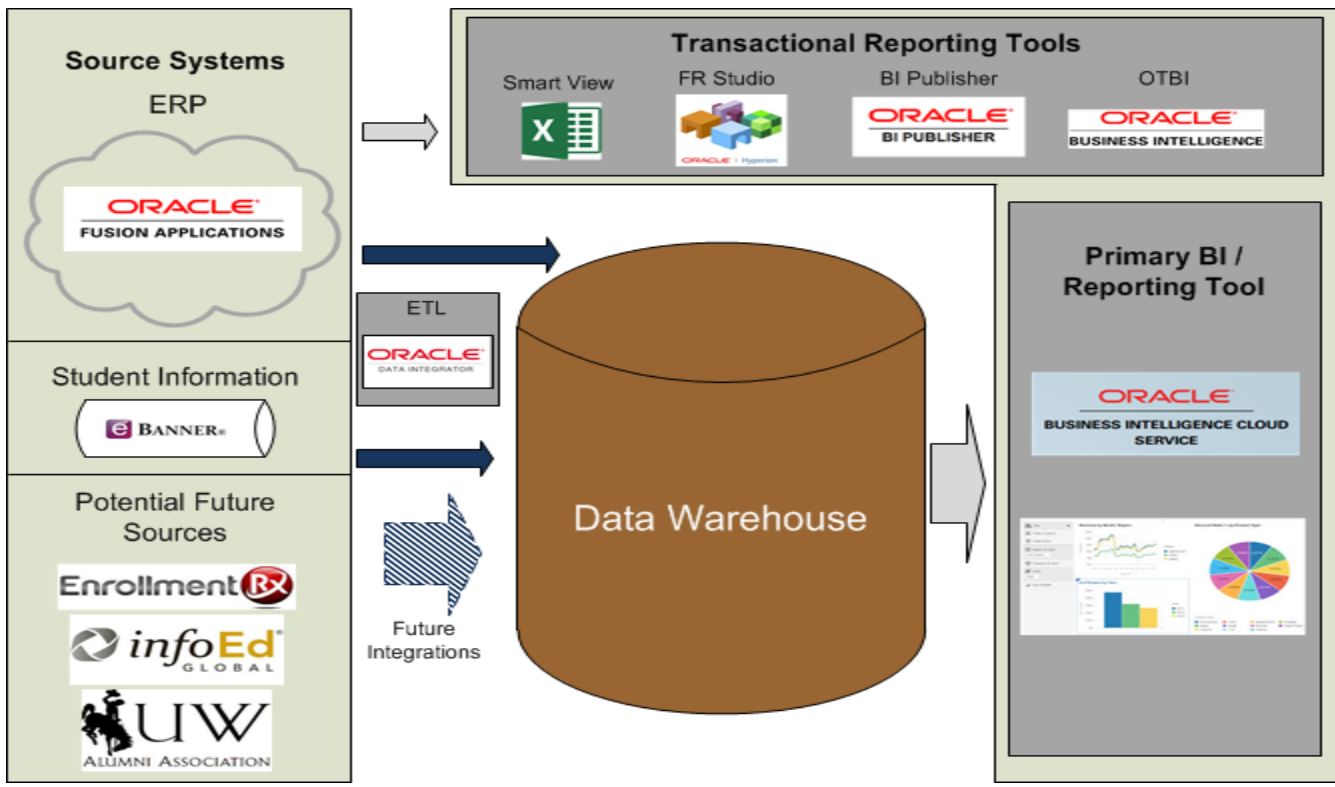
Goal 3

Promote and support a data driven culture with a unified analytic information platform and robust data querying facility

Goal 4

Provide reliable, consistent and timely enterprise reporting capability that appropriately secures information across all functional areas.

Reporting Architecture



A self service reporting solution will be developed using Oracle’s Business Intelligence Cloud Service (BICS), which will enable users to retrieve information on demand. ETL (ODI – Oracle Data Integrator) will be used to move data from the data sources into the data warehouse, and BICS will leverage data sitting within the data warehouse. A series of prebuilt dashboards & reports will be leveraged by end users to consume the necessary information.

Student reporting will leverage the pre-delivered content from Oracle as much as possible, with some customizations where required to meet Wyoming reporting needs

Reporting Content Overview:

- While there are a very large number of Oracle pre-delivered reports, not all reports will be populated in the first phase of this project
- The Wyoming reporting team and Subject Matter Experts have selected the following reports as those that are both important to users and able to be populated using data from Banner
- Additional data sources, such as CRM or OIA freezes are being considered for integration by the University of Wyoming team
- The appendix list sample questions that are answered by each of the reports selected to be delivered in the first phase of the WyoCloud BI reporting effort

Student Records - Term Enrollment Demographics

Sample from the Appendix

Analyses on student demographics. This includes gender, ethnicity, marital status, etc.

Report	Reporting Questions
Student Profile by Personal Attributes	<ul style="list-style-type: none"> • What percentage of the students are female?
Student Profile by Academic Attributes	<ul style="list-style-type: none"> • What percentage of the students are in-state residents? • What percentage of the students are in the College of Business? • What percentage of students are pursuing undergraduate degrees?
Student Profile by Personal Attributes Trends	<ul style="list-style-type: none"> • How does the ratio of male to female students vary from what it was last year?
Student Profile by Academic Attributes Trends	<ul style="list-style-type: none"> • How does the ratio of undergrad to grad students vary from what it was last year? • Is the percentage of students in the College of Health Sciences increasing or decreasing year over year?
Student Profile by Top 10 Academic Careers	<ul style="list-style-type: none"> • What percentage of students are in each of the top 10 academic careers? (for example, undergraduate, graduate, law, pharmacy)
Student Profile by Top 10 Citizenship Statuses	<ul style="list-style-type: none"> • What are the top 10 countries with the most students enrolled? • What percentage of the students come from each of these countries?
Current GPA by Term	<ul style="list-style-type: none"> • What is the current average GPA in the College of Agriculture & Natural Resources?

Delivered Content

Dashboards	Dashboard Pages	Reports	Metrics
4	18	150	387

- Admissions and Recruiting**
- Admission Application
 - Admissions Funnel
 - Application Evaluation
 - Application Status
 - External Academic Summary
 - External Test Scores
 - Student Recruiting
 - Student Response
 - Transfer Credit Snapshot

- Student Record**
- Academic Class
 - Academic Plan Summary
 - Academic Program Details
 - Class Enrollment
 - Class Instructor
 - Class Meeting Pattern
 - Enrollment Requests
 - Institution Summary
 - Student Degrees
 - Term Enrollments

- Student Financials**
- Credit History
 - Payment Details
 - Payments and Charges
 - Cross Reference
 - Transaction Details
 - Financial Aid - Award
 - Disbursement
 - Financial Aid - Award
 - Summary Snapshot

The above delivered content will be leveraged where data is available and makes sense for the University

BICS Reporting Terms

Dashboard Pages

Prompts

Dashboard Pages

Prompts

Dashboard

Reports/Analyses

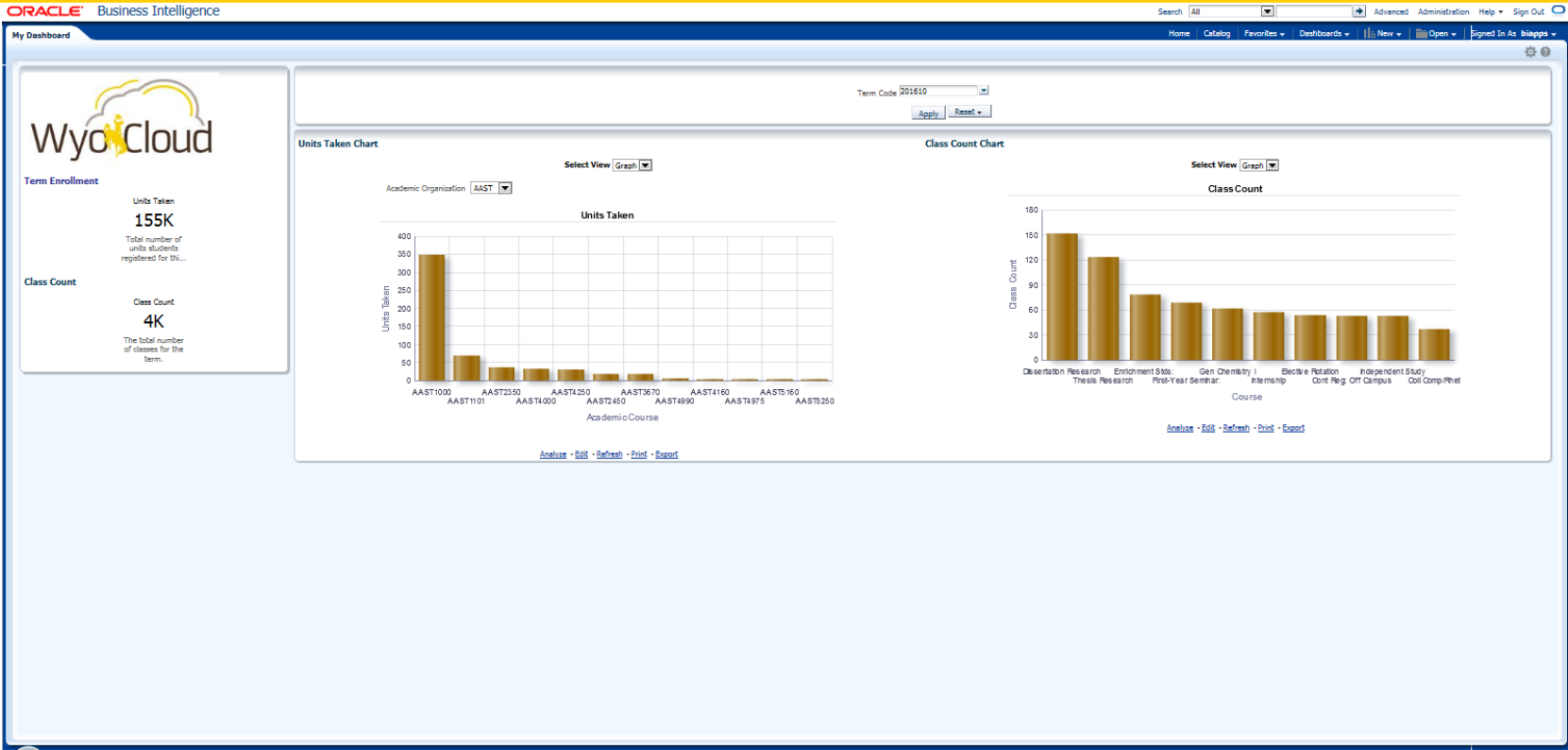
Reporting- Current State

UW Enrollment Comparisons, Fall 2014-Fall 2016 - Day 15											
	2014		2015		2016		1 Year Change		2 Year Change		
	Number	Percent	Number	Percent	Number	Percent	Number	Percent	Number	Percent	
Total Students	12932		12841		12607		-234	-1.8	-325	-2.5	
Classification based on credit hours											
Freshmen	2157	16.7	2189	17	2038	16.2	-151	-6.9	-119	-5.5	
Sophomores	1672	12.9	1688	13.1	1707	13.5	19	1.1	35	2.1	
Juniors	2064	16	2043	15.9	2143	17	100	4.9	79	3.8	
Seniors	3652	28.2	3596	28	3406	27	-190	-5.3	-246	-6.7	
Second Bachelors	389	3	333	2.6	329	2.6	-4	-1.2	-60	-15.4	
Non-degree undergrads	223	1.7	209	1.6	177	1.4	-32	-15.3	-46	-20.6	
Undergraduates Subtotal	10157	78.5	10058	78.2	9800	77.7	-258	-2.6	-357	-3.5	
Graduate/Professional	2405	18.6	2397	18.7	2423	19.2	26	1.1	18	0.7	
Non-degree graduates	307	2.9	386	3	384	3	-2	-0.5	14	3.8	
Graduate/Professional Subtotal	2775	21.5	2783	21.7	2807	22.2	24	0.9	32	1.2	

The current reporting environment is delivering content through a variety of manual processes. The nature of the processes and related technologies (Excel) results in static output that can often lag behind the desired decision making pace.



Reporting- Future State

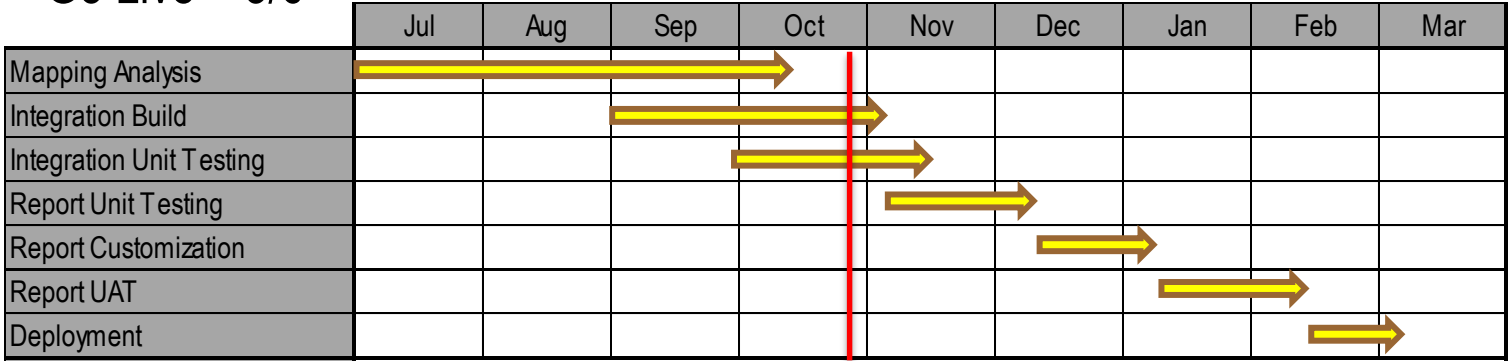


The future reporting environment connects us directly to the information. The reports are interactive, can be both graphical and tabular, and will provide data within 24 hours of it being entered in the transaction systems.

Demo

Next Steps – Student Reporting

- Reporting Unit Testing & Fit Gap Analysis - Begins 11/7
- Report Customization Based on Unit Testing – Begins 12/7
- User Testing of Reports – Begins 1/9
- User Training - Begins 1/16
- Go Live – 3/6



Appendix – Student Reporting Content

High level view of student applicants

Report	Additional Reports	Reporting Questions
Applications by Top 10 Programs	<ul style="list-style-type: none"> • All Programs • All Program Trends 	<ul style="list-style-type: none"> • How many applicants applied to the top 10 degree programs (for example: BS in Civil Engineering or MBA) • How many applicants apply to each program? • How do these numbers vary year over year?
Applicants by Personal Attributes	<ul style="list-style-type: none"> • Trends 	<ul style="list-style-type: none"> • What percentage of applicants are female? • How does the ratio of male to female applicants vary year over year? • And how is this changing year over year? • Is this number increasing or decreasing year over year?
Applicants Diversity Analysis	<ul style="list-style-type: none"> • Trends 	<ul style="list-style-type: none"> • What percentage of the applicants are U.S. Citizens? • What is the ethnic breakdown of the applicant pool? • What are the top five countries students come from? • How is the percentage of U.S. citizens to non U.S. citizens changing year over year? • How is the percentage of ethnic minority applicants changing year over year?
Applicants by All Academic Plans		<ul style="list-style-type: none"> • How many applicants apply to each major at the university?

Analysis of external test scores, student responses and other criteria used to evaluate student applicants

Report	Reporting Questions
External Test Scores Analysis	<ul style="list-style-type: none"> • What were the average ACT scores for applicants? • Did these average scores vary by gender or ethnicity?
External Test Scores Trends	<ul style="list-style-type: none"> • How do the average test scores of the applicants this year compare to previous years?

Overview of applicant, admit and enrollment statistics

Report	Reporting Questions
Admissions Funnel	<ul style="list-style-type: none"> • What percentage of applicants get admitted? • What percentage of admitted students end up enrolling?
Admissions Funnel Trends	<ul style="list-style-type: none"> • How do the percentages of applicants to admits, and admits to enroll vary year over year?
Conversion Ratio Details	<ul style="list-style-type: none"> • How many undergraduate and graduate applicants? • How many of these students end up enrolling?
Conversion Ratio Trends	<ul style="list-style-type: none"> • How are the applicant to admit and admit to enroll ratios changing year over year?

Analysis of class and term enrollment, including class capacities and enrollment requests

Report	Reporting Questions
Student Enrollment by Top 10 Classes	<ul style="list-style-type: none"> • What are the top 10 classes in terms of student enrollment? • How many students are in each of these classes?
Enrollment Capacity vs. Requests by Top 10 Classes	<ul style="list-style-type: none"> • How many students requested to enroll in the 10 most popular classes? • How many of these students were enrolled in the class?
Student Enrollment by Top 5 Popular Programs	<ul style="list-style-type: none"> • What are the top 5 most popular programs? (for example: BS in Computer Science or BA in Criminal Justice) • How many students are enrolled in each of these programs?
Student Enrollment by Term	<ul style="list-style-type: none"> • How many students are enrolled in each term? • What trends are occurring in terms of student enrollment?
Enrollment History for past 5 Years	<ul style="list-style-type: none"> • How many students have been enrolled at the university over the last 5 years? • How many of these students were graduate students? • How many students have been enrolled in the College of Engineering & Applied Science over the last 5 years? • How many students have been enrolled in the Economics major over the last 5 years?
Class Enrollment vs. Capacity by All Careers	<ul style="list-style-type: none"> • How many students are enrolled in a class compared to how many students the class can hold?
All Academic Programs	<ul style="list-style-type: none"> • How many student are enrolled in each academic program? (for example: BS in Geology or BS in Molecular Biology)



Student Records - Enrollment

Analysis of class and term enrollment, including class capacities and enrollment requests

Report	Reporting Questions
Enrollment History for All Years	<ul style="list-style-type: none">• How many students are enrolled at the University? How has this number varied in recent years?• How many students are enrolled in undergraduate engineering? How has this number varied in the recent years?• How many students are enrolled in a plan to receive a BS degree in Mechanical Engineering? How has this number varied in recent years?
Student Enrollment by All Classes	<ul style="list-style-type: none">• How many students are enrolled in each class?

Analyses about class capacities, enrollment numbers, wait lists and student to instructor ratios

Report	Reporting Questions
Class Capacities and Actuals by Top 10 Academic Careers	<ul style="list-style-type: none"> • How many students are enrolled in the top 10 academic careers?
Class Waiting List	<ul style="list-style-type: none"> • How many students are on the waiting list for a class?
Student to Instructor High Ratio	<ul style="list-style-type: none"> • What classes have the highest student to instructor ratio?
Student to Instructor Low Ratio	<ul style="list-style-type: none"> • What classes have the lowest student to instructor ratio?

Analyzes units taken, units in progress and units passed

Report	Reporting Questions
Units Taken Analysis	<ul style="list-style-type: none"> • How many units have been taken for GPA? • How many units have been taken overall? • How many hours have been taken in the College of Arts & Sciences?
Units in Progress Analysis	<ul style="list-style-type: none"> • How many GPA units are currently in progress in the College of Business? • How many units are currently in progress in the College of Education?
Units Passed Analysis	<ul style="list-style-type: none"> • How many GPA units have been passed in the College of Health Science? • How many units have been passed in the College of Agriculture & Natural Resources?
Class Units in Progress	<ul style="list-style-type: none"> • What is the total number of units in progress for freshman?
Term GPA and Units	<ul style="list-style-type: none"> • How many units did a student take each term? • How many grade points did a student earn each term?
Comparison of Units	<ul style="list-style-type: none"> • What is the maximum number of units a student may enroll in for a term?

Analyses about degrees awarded and trends

Report	Reporting Questions
Degrees Awarded by Academic Attributes	<ul style="list-style-type: none"> • What percentage of the degrees awarded were in the College of Engineering & Applied Science? • What percentage of the degrees awarded were Biology degrees?
Degrees Awarded by Education Levels	<ul style="list-style-type: none"> • What percentage of the degrees awarded were undergraduate degrees?
Degrees Awarded by Personal Attributes	<ul style="list-style-type: none"> • What percentage of degree recipients were female? • What percentage of degree recipients were Hispanic? • What percentage of degree recipients were athletes?
Degrees Awarded with Honors	<ul style="list-style-type: none"> • How many degrees were awarded with honors for Elementary Education?
Degrees Awarded Totals	<ul style="list-style-type: none"> • How many degrees were awarded this year?

Analyses on student demographics. This includes gender, ethnicity, marital status, etc.

Report	Reporting Questions
Student Profile by Personal Attributes	<ul style="list-style-type: none"> • What percentage of the students are female?
Student Profile by Academic Attributes	<ul style="list-style-type: none"> • What percentage of the students are in-state residents? • What percentage of the students are in the College of Business? • What percentage of students are pursuing undergraduate degrees?
Student Profile by Personal Attributes Trends	<ul style="list-style-type: none"> • How does the ratio of male to female students vary from what it was last year?
Student Profile by Academic Attributes Trends	<ul style="list-style-type: none"> • How does the ratio of undergrad to grad students vary from what it was last year? • Is the percentage of students in the College of Health Sciences increasing or decreasing year over year?
Student Profile by Top 10 Academic Careers	<ul style="list-style-type: none"> • What percentage of students are in each of the top 10 academic careers? (for example, undergraduate, graduate, law, pharmacy)
Student Profile by Top 10 Citizenship Statuses	<ul style="list-style-type: none"> • What are the top 10 countries with the most students enrolled? • What percentage of the students come from each of these countries?
Current GPA by Term	<ul style="list-style-type: none"> • What is the current average GPA in the College of Agriculture & Natural Resources?

Analyses of instructor roles and workloads

Report	Reporting Questions
Instructors by Academic Attributes	<ul style="list-style-type: none"> • What percentage of instructors are tenured/tenure-track vs. graduate assistants?
Instructor Workload	<ul style="list-style-type: none"> • What is the instructor load for different types of instructors?
Instructor Workload Hours	<ul style="list-style-type: none"> • What are the workload credits for faculty in the College of Arts & Sciences?

Key Metrics for the University. This includes admissions, graduation rates, retention rates, etc.

Report	Reporting Questions
Admissions Funnel Trends	<ul style="list-style-type: none"> • How do the percentages of applicants to admits, and admits to enroll vary year over year?
Graduation Trends by Academic Group	<ul style="list-style-type: none"> • What is the four year graduation rate in the College of Business?
Top 10 Academic Programs	<ul style="list-style-type: none"> • What are the top 10 programs with the highest enrollment? (for example: BS in Psychology or JD)



Executive Overview - Recruitment

Insight into admissions cycle

Report	Reporting Questions
Applications by Top 10 Program Trends	<ul style="list-style-type: none">• How is the number of applicants to the most popular programs changing year over year? (for example: BS in Nursing or Master of Science in Education)

Student retention by demographics and college

Report	Reporting Questions
Student Retention by Ethnic Group and Gender	<ul style="list-style-type: none"> • What is the 4 year retention rate for males? • What is the 3 year retention rate for Hispanic students?
Student Retention by Academic Org and Program	<ul style="list-style-type: none"> • What is the 2 year retention rate for the College of Engineering & Applied Science?
Retention of Transfers	<ul style="list-style-type: none"> • What is the 2 year retention rate for students who were admitted as transfers?
Student Retention by Gender	<ul style="list-style-type: none"> • What is the 3 year retention rate for males?
Student Retention by All Programs	<ul style="list-style-type: none"> • What is the 4 year retention rate for those pursuing a bachelor's degree in Management?
Student Retentions by Top 10 Programs	<ul style="list-style-type: none"> • What is the 4 year retention rate for students in the top 10 most popular programs? (for example: BS in Psychology or BA in Elementary Education)

Analyses related to enrollment, student's academic standing and graduation

Report	Reporting Questions
Student Profile by Personal Attributes Trend	<ul style="list-style-type: none"> • How is the ratio of male to female students changing year over year? • What different ethnic groups make up the student population? How do these vary year over year?
Instructors by Academic Attributes	<ul style="list-style-type: none"> • What percentage of instructors are tenured/tenure-track vs. graduate assistants?
Enrollment History for the past 5 Years	<ul style="list-style-type: none"> • How many students have been enrolled each of the last 5 years? • How many students were pursuing each degree in each of the last 5 years? • How many students were in each college in each of the last 5 years?
Degree Awarded Trends	<ul style="list-style-type: none"> • What percentage of the degrees awarded were in the College of Health Sciences? How does that compare to last year? • What percentage of the degrees awarded were Secondary Education degrees? How does that compare to last year?
Degrees Awarded by Education Level Trends	<ul style="list-style-type: none"> • What percentage of the degrees awarded were undergraduate degrees? How does this compare to recent years?
Student Enrollment Details	<ul style="list-style-type: none"> • How many hours is a particular student taking in a given term?
Student Enrollment by All Programs	<ul style="list-style-type: none"> • How many students are enrolled in the undergraduate School of Environment & Natural Resources?

Analyses related to enrollment, student's academic standing and graduation

Report	Reporting Questions
Student Profile by All Citizenship Statuses	<ul style="list-style-type: none"> • How many students are U.S. citizens? • What are the top three countries in terms of student citizenship? • How many students are Canadian citizens?
Student Profile by All Academic Careers	<ul style="list-style-type: none"> • How many students are in the College of Law?
Student Nationality Trends	<ul style="list-style-type: none"> • How many of the students are permanent residents of the U.S.?
Student Profile by Personal Attributes Details	<ul style="list-style-type: none"> • What are the gender and ethnicity of a particular student?
Student Profile by Academic Attributes Details	<ul style="list-style-type: none"> • Is this particular student a freshman, sophomore, junior or senior? • What major is each student in?

Analysis of Student Financials including trends and aging

Report	Reporting Questions
Due Amounts by Account Type	<ul style="list-style-type: none"> • How much is due?
Year to Date Balance Trends	<ul style="list-style-type: none"> • What is the current balance year to date?
Outstanding Balance by Aging Category	<ul style="list-style-type: none"> • What is the balance of 30-45 days?
Due Amounts	<ul style="list-style-type: none"> • How much is owed by a particular student?
Balances by Career	<ul style="list-style-type: none"> • What is the current balance for undergrad students?

Financial Aid received and awarded

Report	Reporting Questions
Aid Distribution by Source	<ul style="list-style-type: none"> • What percentage of the student aid is federal?
Aid to Student Trend	<ul style="list-style-type: none"> • What percentage of student aid comes from the institution? How has this varied over the last few years?
Top 5 Aid Item Type Disbursements Compared to Previous Year	<ul style="list-style-type: none"> • What are the top 5 types of aid received? Is this different or the same as last year?
Top 10 Aid Contributors Trend	<ul style="list-style-type: none"> • What are the top 10 aid contributors? How does this vary year over year?
Aid Distribution by Term to Student	<ul style="list-style-type: none"> • What percentage of the aid is disbursed to a student in each term?
Aid Offered to Disbursement Comparison by Source, Type, and Career	<ul style="list-style-type: none"> • How much of the available financial aid was actually disbursed? • Was a higher percentage of federal or institutional aid actually disbursed? • Did undergraduate students or graduate students receive a higher percentage of the aid available to them?