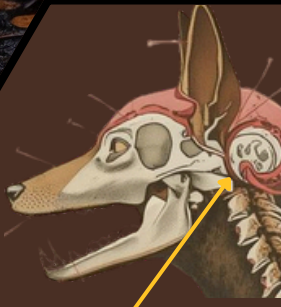
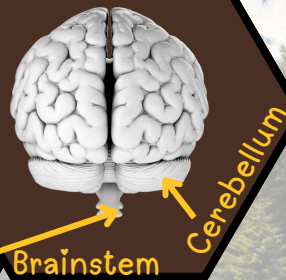
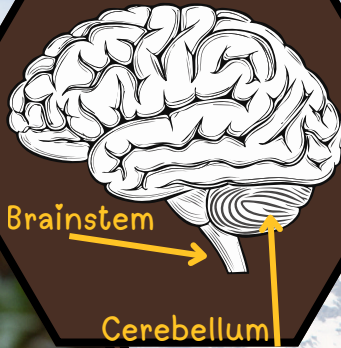


RABIES SAMPLE COLLECTION

Sample Guidelines

- Suitable Sample: Must have identifiable brainstem and cerebellum for DFA test
- Keep sample cold; ship with ice packs in a styrofoam cooler and box
- If head/carcass is frozen initially, ship it frozen, don't freeze and thaw
- Can ship entire head or just brain
 - If shipping brain, put in hard sided container
- Do not damage/smash/shoot head
- Provide all information on submission forms relevant to rabies testing:
 - Provide exact location of animal
 - If known, provide history/symptoms
 - Mark "surveillance" if appropriate



Shipping Supplies

- Double bag the sample. Ensure each sample is clearly labeled.
- Place bagged sample in rigid shipping box
- Place absorbent in box material to prevent leaks
- Add sufficient cold packs
- Provide paperwork on top of styrofoam box, just inside outer box
- Properly ship under UN3373 guidance



WYOMING STATE
VETERINARY LABORATORY



307-766-9934



wsvl-rabies@lists.uwyo.edu



[Accession Sheet](#)



[Extra Rabies Information](#)

www.uwyo.edu/wyovet/client-services/rabies-information.html

Wyoming State Vet Lab Website

➔ Shipping ➔ Forms & Sampling