



Rabies in Wyoming

BACKGROUND

Rabies is a generally fatal disease caused by a virus in the genus *Lyssaviridae*. It can infect any mammal, including humans, and is usually spread through bites or other skin-penetrating wounds. In Wyoming, bats and skunks are the most common species affected by rabies.

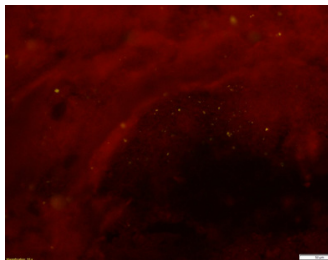
Keep domestic animals from interacting with wild animals as much as possible to prevent transmission of rabies. Vaccination of domestic animals is the best way to protect them from infection.

The Wyoming State Veterinary Laboratory tests a variety of animals for rabies, including dogs, cats, skunks, bats, and horses. While positive cases in domestic animals or rodent species are rare, they do occur.

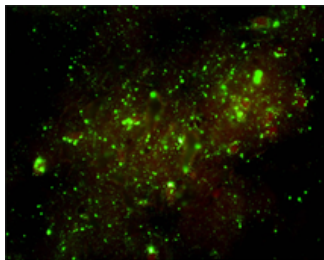
SYMPTOMS

- Hypersalivation
- Aggression
- Seizures and other neurologic signs
- Hydrophobia
- Wild animals
- Decreased fear of humans
- Active during non-usual times (e.g., raccoons out during the day)
- Usually appear 3-12 weeks after exposure to infected animal
- Death within one week of symptoms appearing

Negative rabies case (no fluorescence)



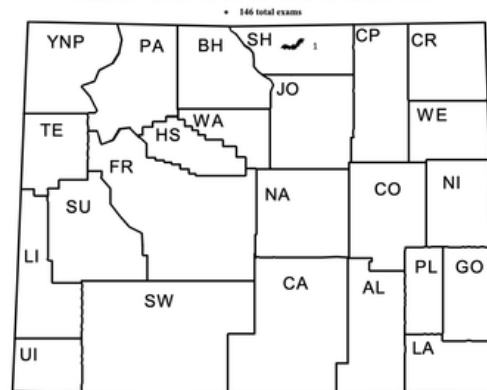
Positive rabies case (green fluorescence)



TESTING

- Required specimens:
 - Brain stem and cerebellum or hippocampus must be present and identifiable to be suitable for testing
- Unsuitable specimens can be tested and will be reported as:
 - If detected, reported as DETECTED
 - If not detected, rabies cannot be ruled out and sample will be reported as UNSUITABLE
- Send to WSVL as soon as possible after collection
- Keep samples cool but not frozen during storage and shipment
- Testing performed using a gold standard direct fluorescent antibody test protocol from CDC
- Testing performed and results reported within two business days of receipt
- Questions about human exposure should be directed to Dr. Emily Curren, the Wyoming State Public Health Veterinarian, 307-777-5825.

Rabies Positives 01/01/2026 to 05/31/2026



For more information, contact Dr. Isabella Ragan at (307) 766-9934
Data courtesy of the Wyoming State Veterinary Lab

- (307) 766 - 9925
- vetrec@uwyo.edu
- uwyo.edu/wyovet/



UNIVERSITY OF WYOMING

Wyoming State Veterinary Laboratory