



WYOMING STATE
VETERINARY LABORATORY

 (307) 766 - 9925  vetrec@uwyo.edu  uwyo.edu/wyovet
 [@WyomingStateVetLab](https://www.facebook.com/WyomingStateVetLab)  [@wystatevetlab](https://www.instagram.com/wystatevetlab)

March 2026 Newsletter

REMINDER:

WSVL will transition to summer hours beginning **May 18th** : M-F, 7:30am - 4:30pm

New Faces at the Lab!



Dr. Bledar Bisha
Interim Department Head



Lauren Steinberg
Laboratory Technician II
Necropsy, Trimming, and Receiving



Emma Steinebrey
Laboratory Technician III
Biocontainment and Facilities

Recent Events

- Annual AAVLD Meeting - October 30th - November 5th
- WVMA Winter Meeting - Attended December 5th - 6th
- Animal Damage Management Board (ADMB) Rabies Meeting - January 12th
- American Association of Veterinary Laboratory Diagnosticians (AAVLD) Audit Pool Training - February 4th
- 42nd Annual Fremont County Farm & Ranch Days - Attended February 11th - 12th
- Wind River Veterinary Medicine Workshop – Attended February 14th
- Multi-State, Multi-Agency Brucellosis Meeting in Montana - Attended November 12th - 13th
- WSVL tours for multiple UWYO courses took place this past fall and winter!
- Dr. Jonathan Fox retired as the Veterinary Sciences Department Head. Dr. Bledar Bisha, the Head of the Animal Science Department, is currently acting as Interim Veterinary Sciences Head.

Upcoming Events

- Board of Veterinary Medicine, New Veterinarian Orientation/Presentation - **Summer 2026!**
- US Army Military Preparedness Necropsy Training - **March 26th, 2026**
- UWYO Youth in Stem Conference - **May 19th, 2026**
- WVMA Summer Meeting in Saratoga, WY - **June 14th - 16th, 2026**
- WSVL is preparing for our AAVLD Accreditation Visit - **August 2026**
- WSVL will be transitioning to a new Quality Management System! - **Late Fall 2026**

Testing Updates

A “Paws-itive” Development: New Tularemia Testing Now Available

We are thrilled to announce the launch of our new microagglutination test (MAT) for **Tularemia**, making the WSVL the only veterinary diagnostic lab in the US that can determine titers for this pathogen. This milestone was made possible by **Dusty**, a spirited Tortoiseshell and skillful hunter from Missouri, who provided the essential positive control serum following her own encounter with *Francisella tularensis*. Dusty was initially diagnosed with Tularemia after the WSVL Bacteriology lab detected *F. tularensis* via Polymerase Chain Reaction (PCR). We extend our deepest gratitude to Dusty, her owner, and the dedicated team at **Hillside Animal Hospital** in St. Louis for their swift coordination in collecting and providing us with Dusty’s blood. We invite you to take advantage of this new diagnostic tool for your patients and join us in thanking Dusty for her invaluable contribution to veterinary diagnostics!



NEW Trichomoniasis Paperwork Requirements

The Wyoming Livestock Board has recently changed their Trichomoniasis submission form. Per the WLSB guidelines, the WSVL can only release results of official Trich testing if we have received the **correct and complete paperwork**. The current version of the submission form is available as either a PDF, or an Excel sheet, and can be found online at the WSVL and WLSB websites linked here →



****Please note: Submitters have until May 1st to adapt their submissions to the new guidelines. After May 1st, submitted samples will be processed, as long as they are in accordance with the guidelines, but results will be held until the correct paperwork is received.***



Important Update: Transition to Electronic Brucellosis Reporting

Starting **March 1, 2026**, we have updated how we distribute Brucellosis surveillance results. To streamline our reporting process and ensure the fastest delivery of results, paper copies of **Federal Form 4-33 will no longer be mailed by default.**

What You Need to Know

- **Electronic Delivery:** Reports will be sent directly to the email address on file for your clinic.
- **Effective Date:** This change applies to all submissions received on or after **March 1, 2026**.
- **Verify Your Contact Info:** Please ensure your preferred email address is up to date in our system to avoid any delays.

Prefer to Keep Paper?

We understand that some workflows require physical documentation. If you wish to continue receiving paper copies of your forms via USPS:

1. **Contact us** by email or phone.
2. Request to be added to our **Exception List**.
3. We will continue to mail your physical copies as usual.

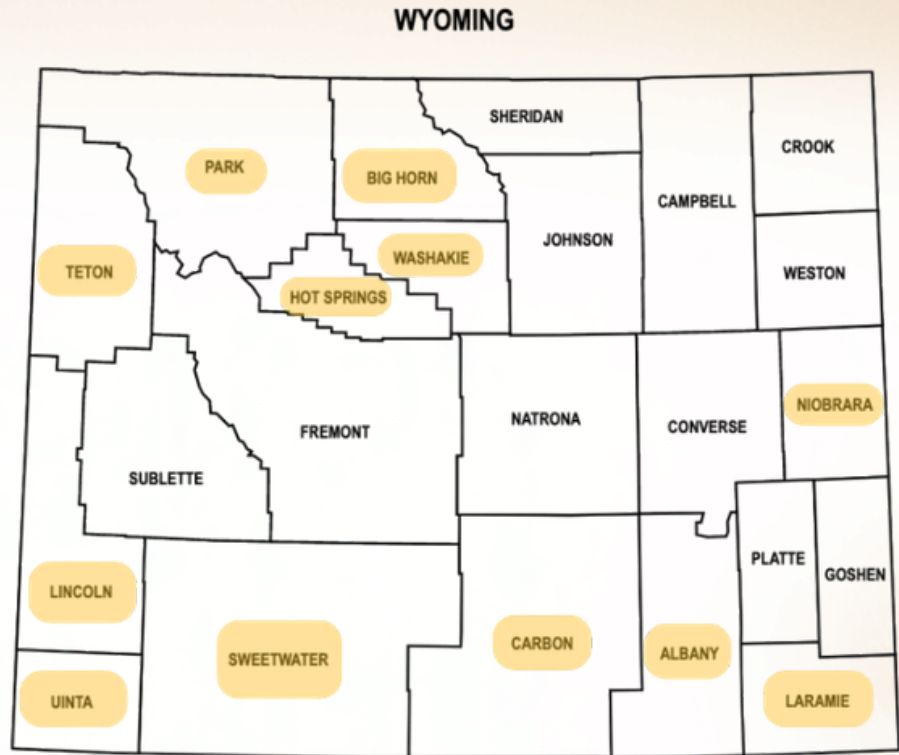
Thank you for your cooperation as we move toward more efficient reporting.

Johne's Disease Project

Drs. Srednik and Vanderstichel would like to thank participating veterinarians for their continued support of the *Understanding Johne's Disease in Wyoming Beef Cattle* project.

We are making great progress and currently have **participants from 11 counties, with two herds enrolled per county**. We are continuing enrollment and are actively seeking participants from the following counties:

- Albany
- Big Horn
- Carbon
- Hot Springs
- Laramie
- Lincoln
- Niobrara
- Park
- Sweetwater
- Teton
- Uinta
- Washakie



Participating veterinarians receive **free diagnostic testing (ELISA and PCR)**, convenient sample collection kits for herd visits, and herd-specific results, along with statewide findings to guide control strategies.

If you are interested in participating, please contact us at wsvl-johnes@uwyo.edu. We will follow up with herd-related information (e.g., location and herd size) to assist with the selection process.

For more information, contact:
Ms. Jaiden Lopez (Project Coordinator)
wsvl-johnes@uwyo.edu
307-766-9932 (Dr. Srednik)

Thank you for supporting cattle health and veterinary research in Wyoming!



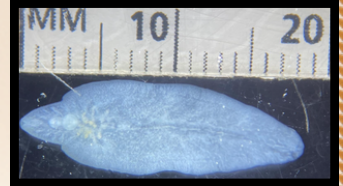
Disease Updates



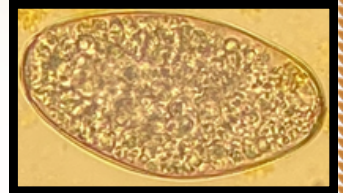
Shell of a snail host

Uptick in Bovine Fluke and Associated Fatal Clostridial Infections

Over the fall and winter, the WSVL has detected common liver flukes (*Fasciola hepatica*) in cattle at necropsy and fluke eggs in submitted fecal samples. These cases were from the Riverton area, but any location in the state with suitable habitat for the aquatic snail host could have common liver flukes present. Cattle and sheep can be infected with liver fluke, but it is more likely to be fatal in sheep. Infection with common liver fluke puts animals at risk for black disease, an infection with *Clostridium* bacteria that is typically fatal. For more details on *F. hepatica*, please visit the [Merck manual](#) or call the lab. If you are concerned about common liver fluke in your herd, please submit fecal samples to the WSVL and request a fluke exam.



Adult Liver Fluke (~18mm in length)



Liver Fluke Egg (~140µm in length)

Additionally, **ticks** are currently widespread across Wyoming, especially with the unusually warm weather, increasing the risk of disease exposure. Submitting collected ticks to the WSVL lab for identification can help determine potential health risks and also maintain surveillance of tick populations around the state. You can have ticks identified by requesting a "Specimen ID" on our accession form. To remove ticks from animals, see tips from the [American Kennel Club](#) and the [Tick Encounter site](#) and make sure you have a pair of pointy tweezers!

Please submit!

Equine Herpesvirus-1 (EHV-1) Outbreak

Beginning in November 2025, multiple states reported cases of Equine Herpesvirus-1 (EHV-1) in horses, including outbreaks associated with neurologic disease. During the initial outbreak, WSVL worked with UW College of Agriculture, Life Sciences and Natural Resources to provide timely information and resources to the equine community. While several states detected EHV-1-positive horses, WSVL did not identify any positive EHV-1 neurological cases in samples submitted to our laboratory. Continued vigilance and monitoring of horses for clinical signs remain important.



BVDV Testing

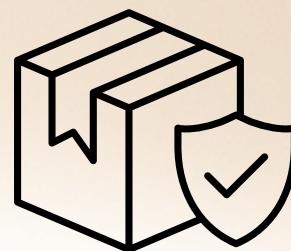
Bovine Viral Diarrhea Virus (BVDV) remains an important cause of reproductive loss, poor calf health, and reduced productivity in cattle herds. The greatest risk to herd health comes from persistently infected (PI) animals, which were infected before birth and shed large amounts of virus throughout their lives, serving as a constant source of infection for other cattle. Identifying and removing PI animals is the cornerstone of BVDV control programs. Ear notch testing is a simple, reliable method for screening cattle for PI status, because the virus is consistently present in skin tissue and can be detected using PCR or antigen ELISA. Collecting an ear notch sample during routine tagging allows producers and veterinarians to efficiently screen calves and adult cattle and help prevent the spread of BVDV within and between herds.



General Updates

Updated WSVL Inbound Shipping Program Links:

Links for the WSVL Inbound Shipping Programs, which include both UPS and FedEx couriers, will now be located **within the WSVL Client Portal**. You will be required to sign in using your username and password. The links will be located on the left side. For new users, please email vetrec@uwyo.edu or call [307-766-9925](tel:307-766-9925) to get set up with sign-in credentials.



Moving forward, clients will automatically receive an email copy of their packing slip with tracking information through the new links!

The old links will still be available on our website until **April 15th**; after that date you will be required to access them through the WSVL Client Portal.

Electronic Requisition Capabilities:

We have a convenient portal available to clients that can be accessed from our website. From the **Client Portal**, clients are able to:



- Access our Fee Schedule
- Access inbound shipping programs (both FedEx and UPS)
- Access test results
- Access billing statements / information
- Find announcements about WSVL.

*New in the coming weeks: Clients will be able to submit samples to WSVL using an electronic requisition form!

It is required to have both **Account Number** and **Account Password** in order to log into our client portal. For new users and/or clients that are unsure of their account information, please contact the business office at WSVL to set up the account. Passwords must be set by our staff, as this step in our setup is not available to do online. Clients are encouraged to call the lab at [307-766-9925](tel:307-766-9925) or email their inquiry/request to our laboratory email, vetrec@uwyo.edu.

The Wyoming State Veterinary Laboratory is committed to continuously improving the quality and efficiency of our diagnostic services. We recognize that the insights of our clients and stakeholders are essential to that effort. We are actively seeking feedback from veterinarians, producers, agencies, and partners to better understand your needs, expectations, and experiences when working with our laboratory. Your input will help us identify both areas of strength and opportunities for improvement. By working together and listening closely to those we serve, we aim to ensure that our laboratory remains a trusted, responsive, and valuable resource for animal health in Wyoming and beyond.

Also, we are exploring transitioning from mailing printed monthly statements to **emailing monthly statements**. Your feedback on how this would affect your clinic would be greatly appreciated!

Anonymous Client Feedback