

## Collection of CWD samples (brainstem and lymph nodes)

Mule deer head shown: white-tailed deer, elk, and moose similar.

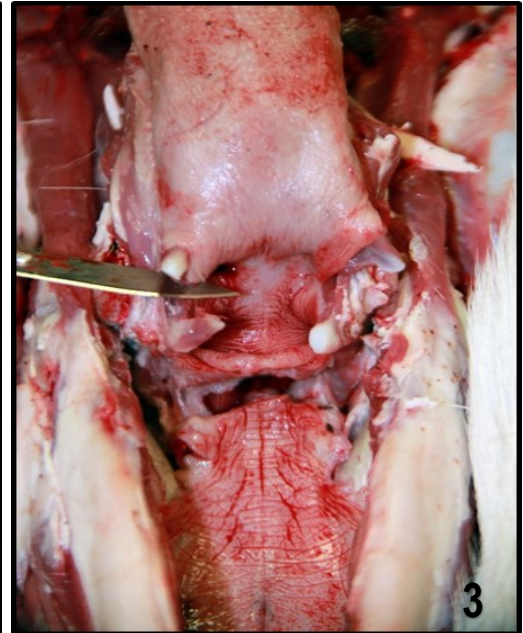
Instructions are presented as a guide – WSVL is not responsible for hunters submitting incorrect tissues and/or untestable samples.



**1.** Remove head from neck at first vertebra using a knife (may cape out head/neck if desired). Skin bottom of head starting at chin to expose jaw bones as illustrated.



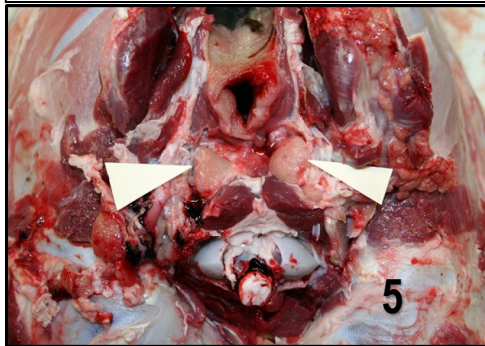
**2.** Remove the tongue and attached larynx using a knife. Start at the tip of the tongue, working backwards.



**3.** Cut through the soft cartilage to remove larynx as illustrated.

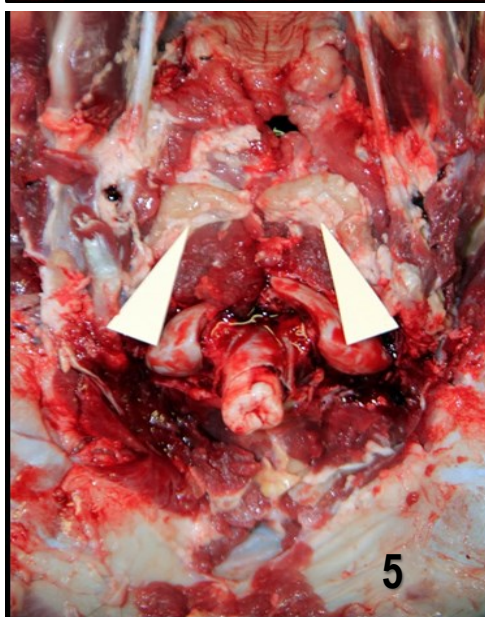


**4.** Remove entire tongue and larynx (with any attached trachea/esophagus). Set aside.



**5.** The retropharyngeal lymph nodes (2) are located deep in the space behind the pharynx above the opening to the brain and spinal cord (with head upside down) (**arrowheads**). Remove both nodes with a knife and trim away fat/excess tissue.

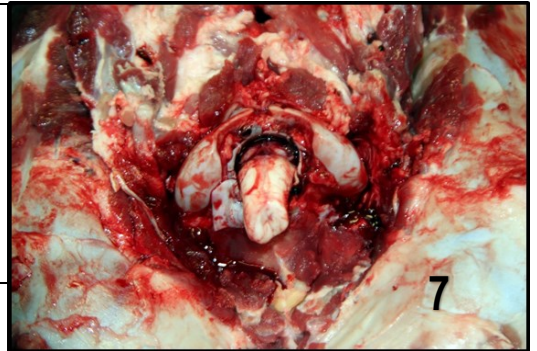
The nodes are round/oval, firm, and about the size of a peanut to an almond in a deer and larger in elk and moose.



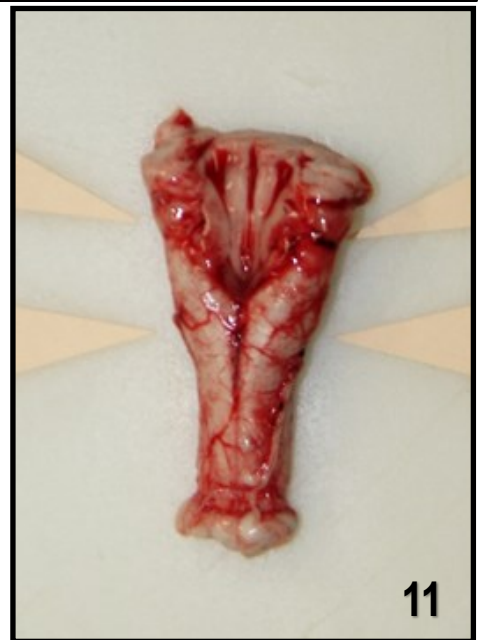
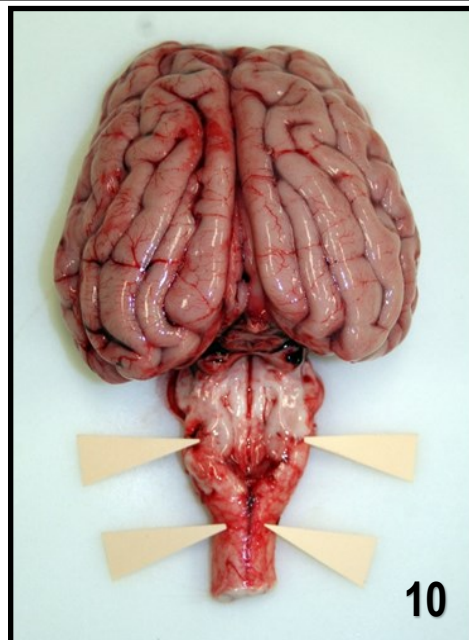
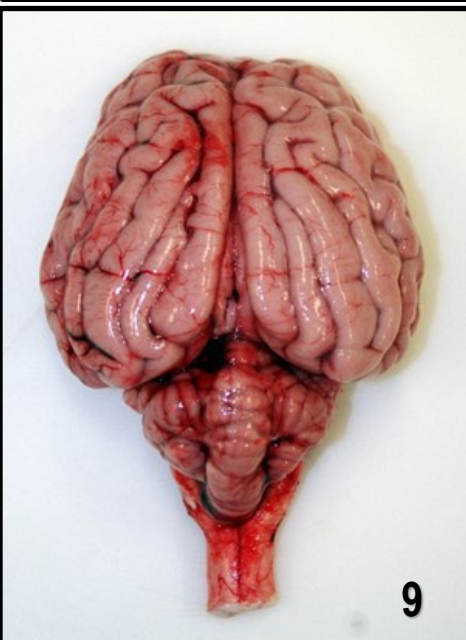
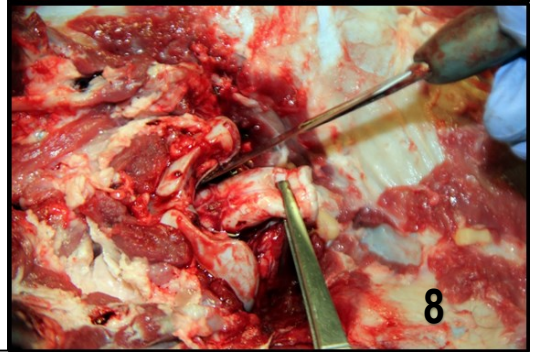




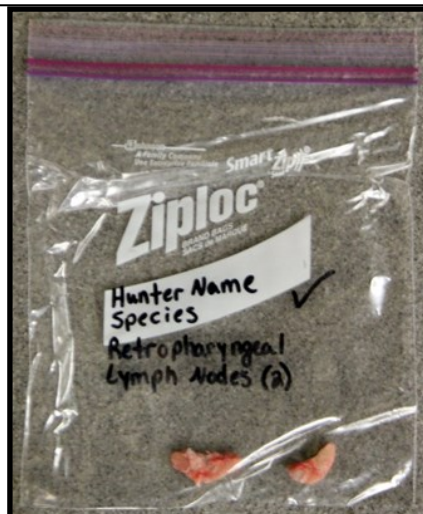
6. The end of the spinal cord leading to brainstem also is exposed by removing the head from the neck at the first vertebra using a knife (not a saw) (**arrowheads**).



7 and 8. Grasp the exposed spinal cord and gently pull back while inserting a sharp narrow-blade knife into the braincase to cut the brainstem as far forward as you can reach. The desired piece of brainstem is at least 1" inside the skull in a deer and a little further in an elk and moose.



9. Entire brain, removed from skull. 10. Cerebellum (walnut shaped/sized structure) removed to show brainstem. 10 and 11. The desired piece of brainstem necessary for CWD testing with characteristic "V" or "Y" shape (obex region of medulla) (**between arrowheads**). Cut out this piece with a sharp knife.



Package lymph nodes (2) and brainstem in a Ziploc bag or plastic container. Keep in sturdy outer container to prevent tissue crushing and keep samples cool (refrigerator or cooler with ice packs) before and during transport/shipping.

Clean your knife/instruments with soap and water and disinfect with a 50% bleach solution (contact time at least 30 minutes) after sample collection.

Questions? (307) 766-9920

