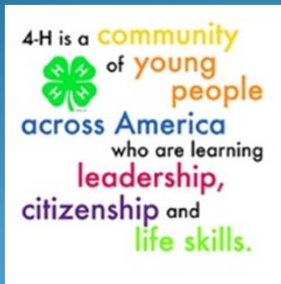
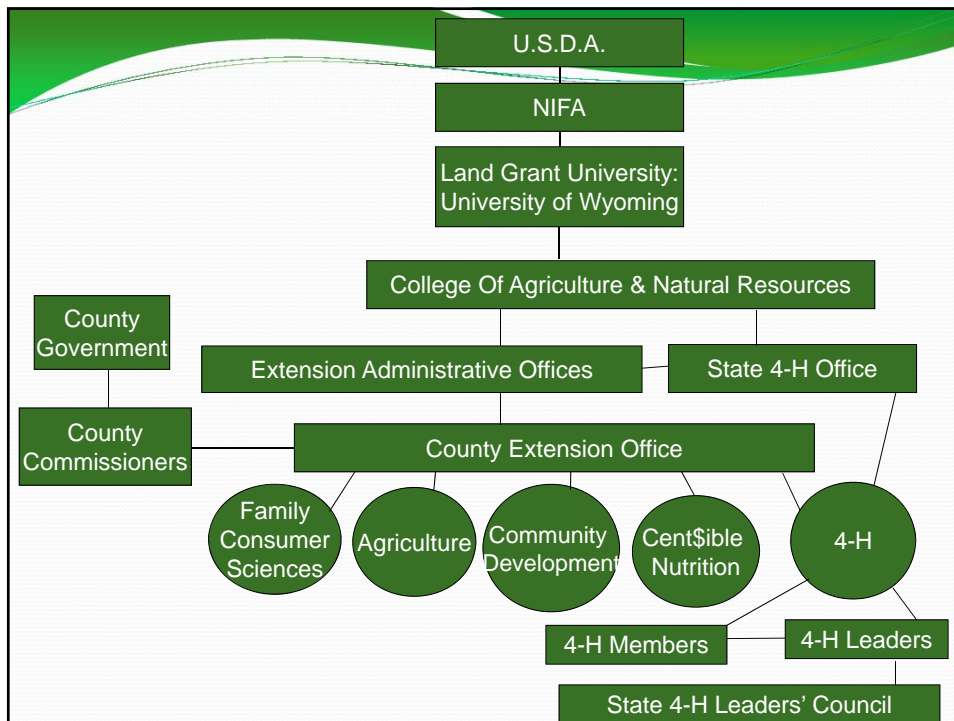


# University of Wyoming 4-H New Volunteer Leader Orientation



Organizational Structure, Funding, and Use of the 4-H Name and Emblem



## Affirmative Action

- Persons seeking admission, employment, or **access to programs** of the University of Wyoming shall be considered without regard to race, color, religion, sex, national origin, disability, age, political belief, veteran status, sexual orientation, and marital or familial status. Persons with disabilities who require alternative means for communication or program information (Braille, large print, audiotape, etc.) should contact their local UW Extension Office.

## How 4-H is Funded:



### University of Wyoming & State 4-H

- Provides percentage of salary and benefits for 4-H Staff.
- Provides support through 4-H Foundation College Scholarships, National Trip Scholarships



### County Government

- Provides partial salary funding for most 4-H Educator positions, office support including office space, administrative assistant support, and general office supplies.



### County 4-H Council & County Fundraisers

- Pays for supplies for 4-H Camp facility, food, & supplies, Cloverbud Activities, Educational Program Supplies, Food for events, Achievement Night Awards and Supplies, 4-H Promotion, 4-H equipment.



### 4-H Enrollment & Project Fees

- Pays for insurance for leaders and members.
- Pays for leader screening fees.
- Activity enrollment fees usually only pay a portion of the cost of the activity.

## Fundraising

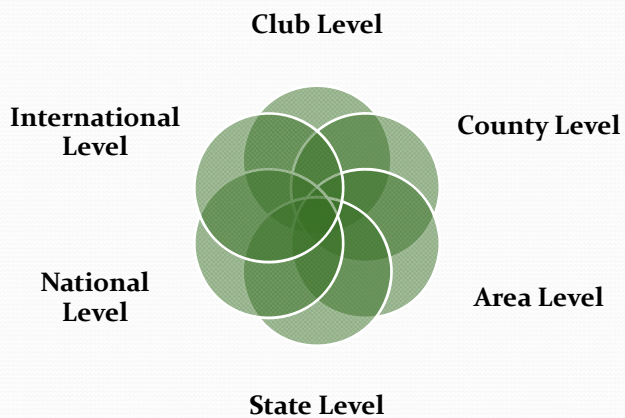
- All money raised in the name of 4-H can only be used for 4-H activities, programs, resources, etc. in a manner consistent with the mission of 4-H.
- All monies raised and inventory purchased with 4-H funds must be accounted for. (yearly audit through club chartering)
- **All fundraisers must be approved by the 4-H Educator and a fund raising request form must be on file at the Extension Office.**
- **Don't wait until the last minute!**

## Name and Emblem Regulations

- The use of the 4-H name and emblem is regulated by law as shown by the USC code on the bottom right leaf.
- Your leader status is your permission to use the 4-H name and emblem. This permission can be revoked by the UW Extension Office if misuse of the name or emblem occurs.
- Once you have permission to use the 4-H emblem and name you have responsibilities:
  - All monies raised in the name of 4-H can only be used for 4-H activities, programs and resources, etc.
  - All monies raised in the name of 4-H must be accounted for. (Yearly audit)
  - All property bought with 4-H funds must be inventoried with the Extension Office.



## Educational Opportunities in 4-H



Thanks for completing this orientation. Please remember...

- complete the **evaluation** on the State 4-H web site, and
- **set up an appointment** to meet with your County 4-H Educator.

