

Loose Aggregate

Numerical Rating	Verbal Rating	Description
9	Very Good/ Excellent	Only occasional loose material on the road surface; No berms on the traveled way; Only very small berms on the shoulders; Negligible risk of chipped windshields.
8	Good	Some loose material in berms less than 1" deep; Berms have only a very minor influence on vehicles' trajectory; Loose material spread over the entire roadway is generally only a few particles thick, and usually 3/4" thick or less; Minor risk of chipped windshields.
7		
6	Fair	Some loose material in berms less than 2" deep; Some influence on vehicles' trajectory, posing a minor safety hazard; Loose material spread over the entire roadway is generally less than 1 1/2" thick; Significant risk of chipped windshields.
5		
4	Poor	Berms between 2" and 4" thick on the shoulders and between the wheelpaths; Vehicle trajectory is significantly affected, posing a substantial safety hazard; Major risk of chipped windshields.
3		
2	Very Poor	Berms over 4" deep; Vehicle speeds are greatly reduced; Major safety issues if driver does not greatly reduce speeds; Risk of chipped windshields reduced only by substantially lowered speeds.
1	Failed	Sand dunes, for example; Road surface completely unconsolidated; May be difficult for some vehicles to pass.

Loose Aggregate



3 Poor



3 Poor

Loose Aggregate



4 Poor

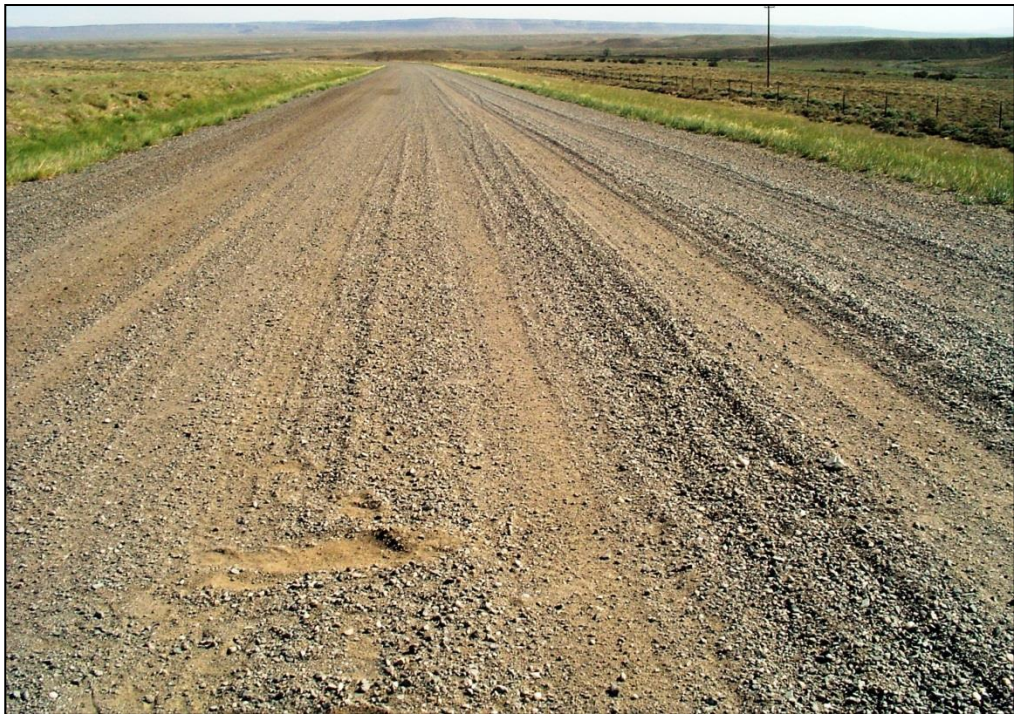


4 Poor

Loose Aggregate

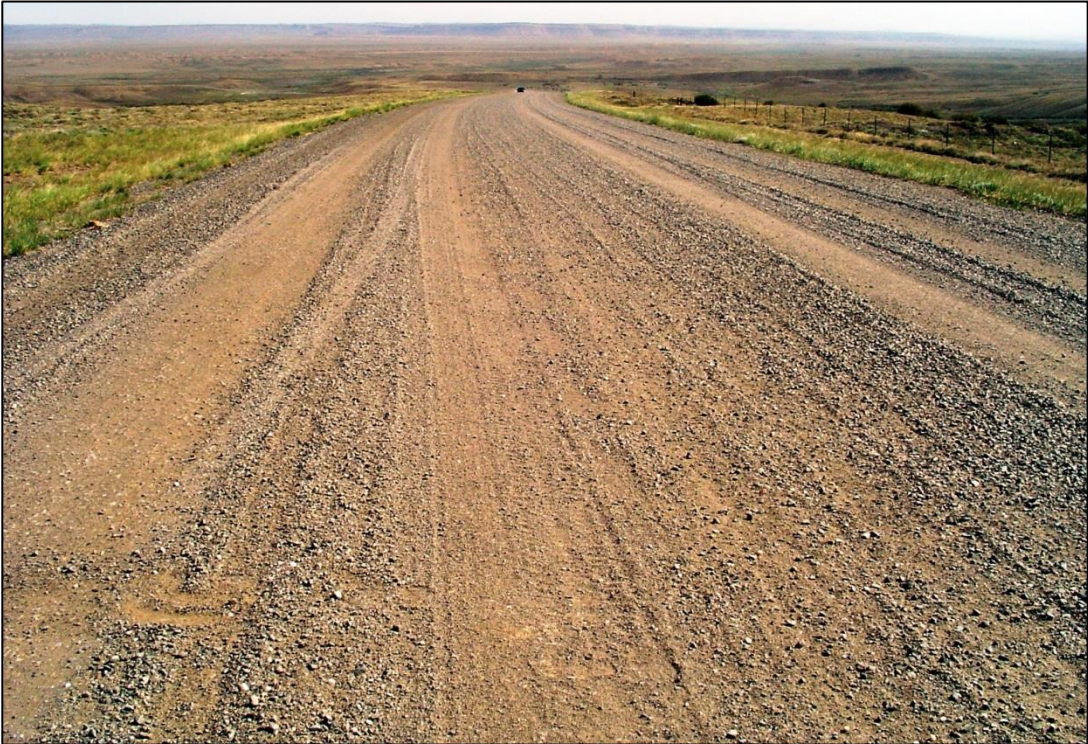


4 Poor



4 Poor

Loose Aggregate



5 Fair



5 Fair

Loose Aggregate



5 Fair



6 Fair

Loose Aggregate



6 Fair



6 Fair

Loose Aggregate



6 Fair



7 Good

Loose Aggregate



7 Good



7 Good

Loose Aggregate



8 Good



8 Good

Loose Aggregate



8 Good



9 Very Good

Loose Aggregate



9 Very Good



9 Very Good